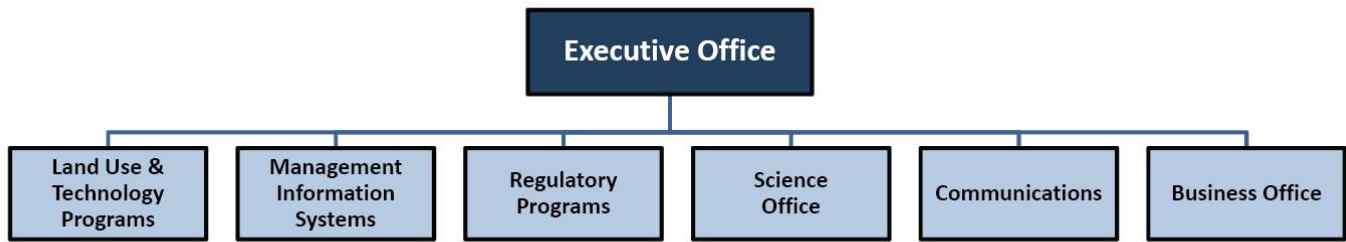




# NEW JERSEY PINELANDS COMMISSION

## ORGANIZATION CHART BY OFFICE

(Updated 5/23/2018)



### Executive Office

Wittenberg, Nancy	Executive Director
Concepcion, Zobeida	Human Resources Manager
Graham, Donna	Deputy Director
Holgersen, Dawn	Office Assistant
Noble, Jessica	Executive Assistant
Roth, Stacey	Chief, Legal and Legislative Affairs

### Regulatory Programs

Horner, Charles	Director of Regulatory Programs
Capella, Timothy	Environmental Specialist
Carter, Keith	Regulatory Programs Specialist
Carter, Ken	Sup. Environmental Specialist
Christopher, Kelly	Environmental Specialist
Demam, Ernest	Sup. Environmental Specialist
Ellis, Branwen	Environmental Specialist
Montgomerie, Jean	Environmental Specialist
Seeber, Fredrick	Environmental Specialist
Szura, Brian	Environmental Specialist
Ward, Rhonda	Environmental Specialist

### Land Use & Technology Programs

Liggett, Larry	Director of Land Use & Technology
Grogan, Susan R.	Chief Planner
Berg, Gina	Resource Planner
Jeney, Robyn	Resource Planner
Lanute, Brad	Resource Planner
McNichol, Tony	Cultural Resource Planner
Piner, Elizabeth	Principal Planning Assistant
Wengrowski, Edward	Environmental Tech. Coordinator

### Science Office

Bunnell, John	Chief Scientist
Laidig, Kim	Principal Research Scientist
Burritt, Patrick	Research Scientist
Sobel, Marilyn	Research Scientist

### Management Information Systems

Bossett, Evan	MIS Manager
DeLorenzo, Mark	GIS Specialist
Olson, Maureen M.	Principal MIS Technician
Pierce, Janet	Principal MIS Specialist
Strong, Deborah	GIS Specialist

### Communications

Leakan, Paul	Communications Officer
Mott, Joel	Principal Public Programs Specialist

### Business Services

Lynch, Jessica	Business Services Manager
Keys, John	Maintenance Technician
Luker, Ronnie	Maintenance Custodian
Melodick, Theresa	Principal Clerical Assistant
Spires, Patricia	Principal Business Assistant