

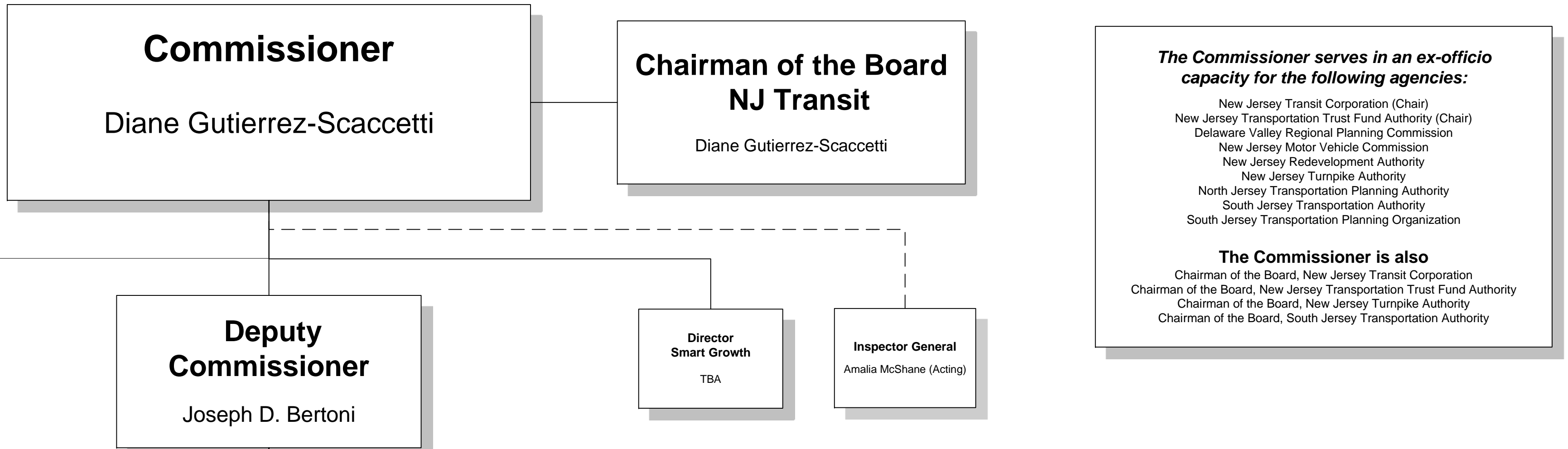
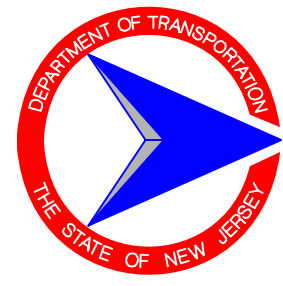
# New Jersey Department of Transportation Organization Chart



June 2018

**Mission Statement:** "Improving Lives by Improving Transportation."

View our latest organization chart online at:  
[www.njdot.nj.gov/about/](http://www.njdot.nj.gov/about/)

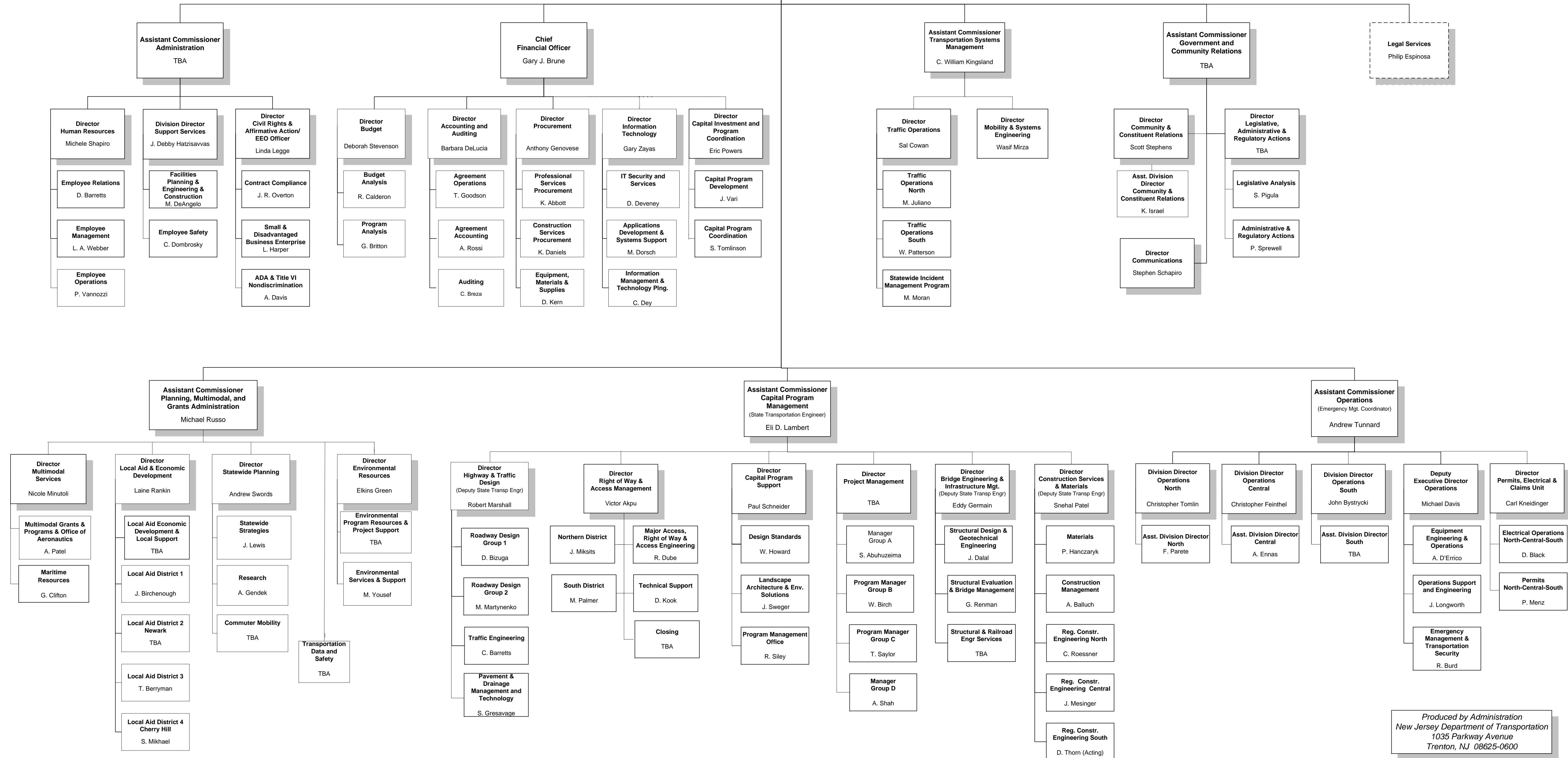


**The Commissioner serves in an ex-officio capacity for the following agencies:**

- New Jersey Transit Corporation (Chair)
- New Jersey Transportation Trust Fund Authority (Chair)
- Delaware Valley Regional Planning Commission
- New Jersey Motor Vehicle Commission
- New Jersey Redevelopment Authority
- New Jersey Turnpike Authority
- North Jersey Transportation Planning Authority
- South Jersey Transportation Authority
- South Jersey Transportation Planning Organization

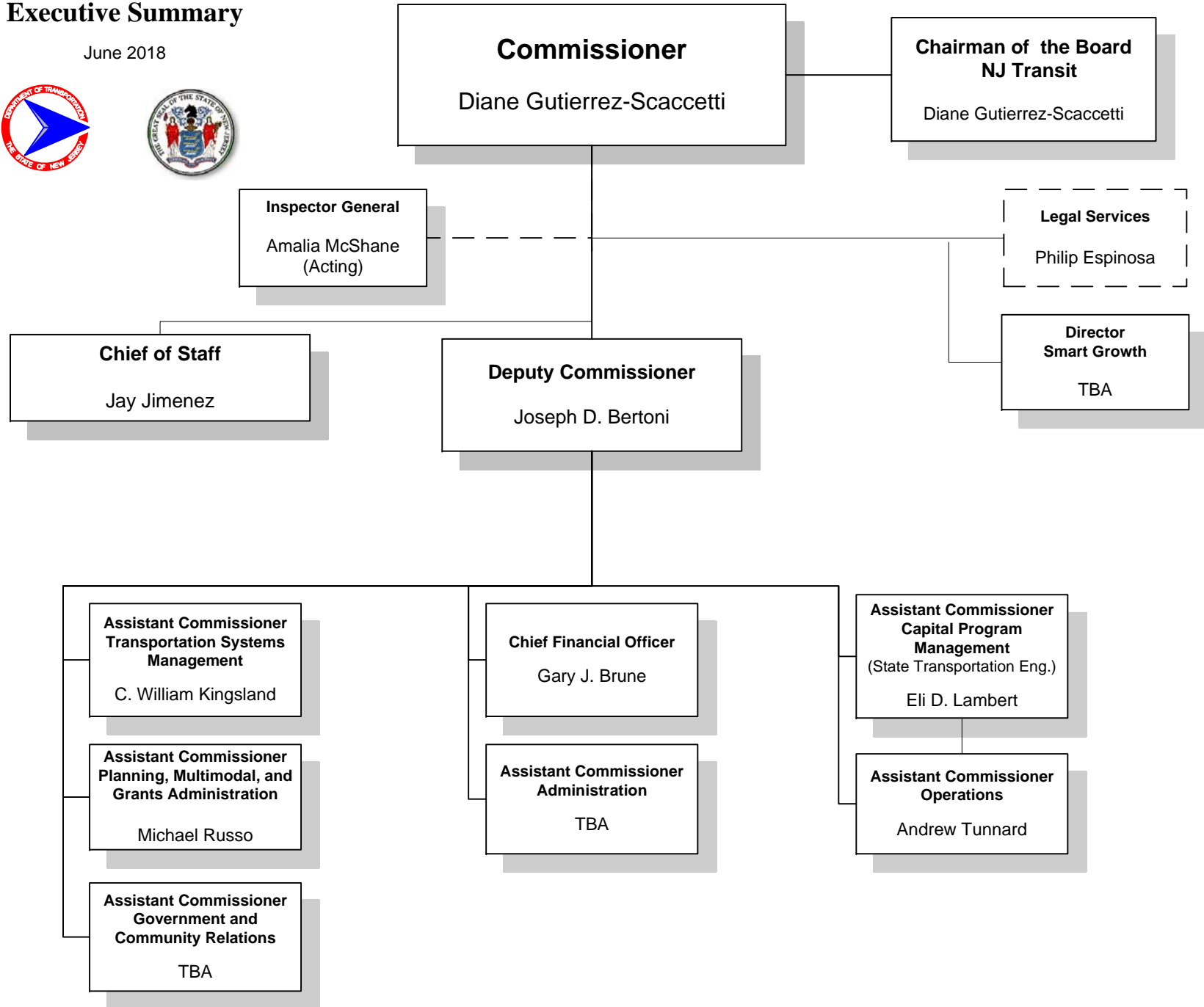
**The Commissioner is also**

- Chairman of the Board, New Jersey Transit Corporation
- Chairman of the Board, New Jersey Transportation Trust Fund Authority
- Chairman of the Board, New Jersey Turnpike Authority
- Chairman of the Board, South Jersey Transportation Authority



# New Jersey Department of Transportation Executive Summary

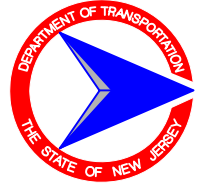
June 2018



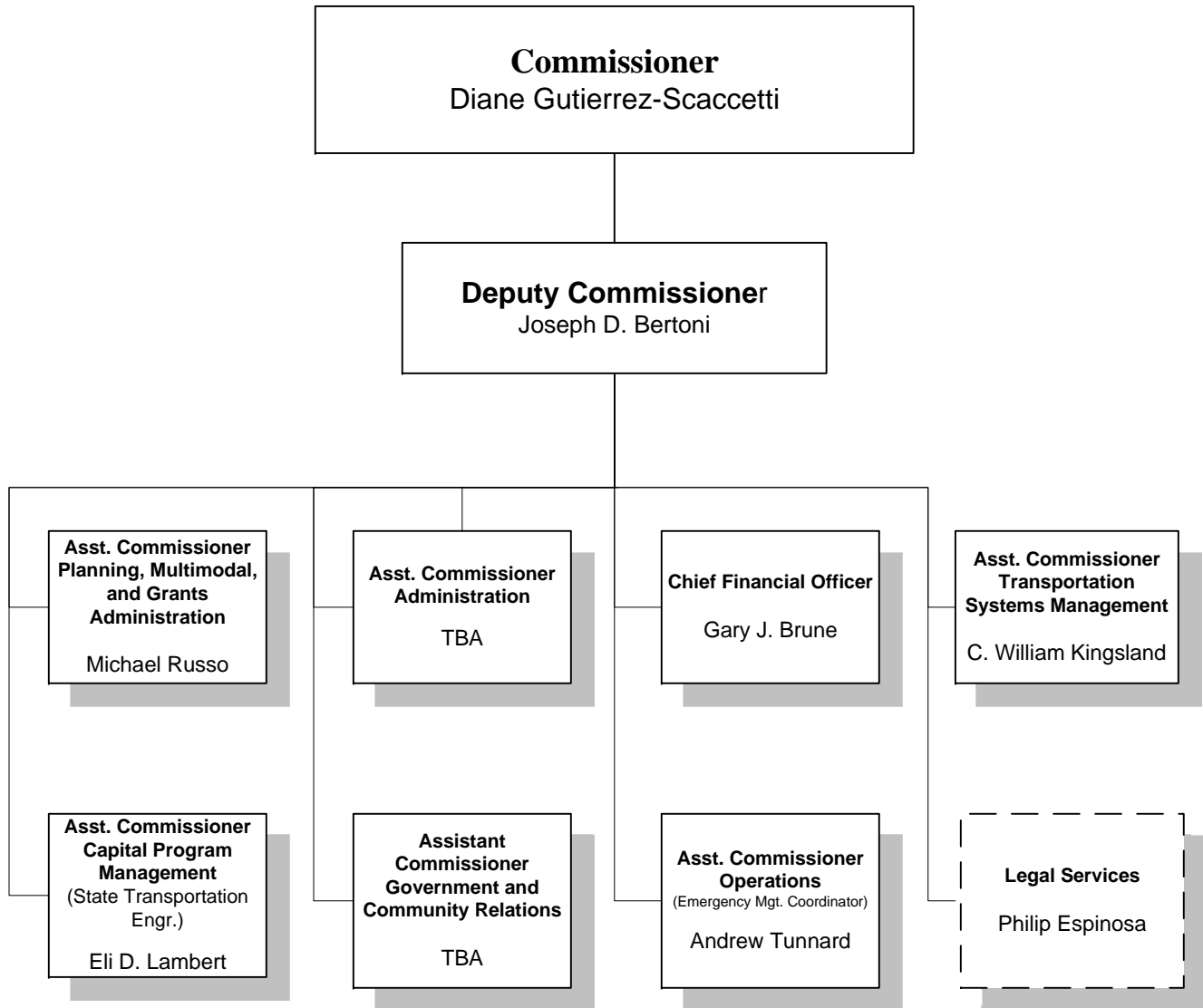


# New Jersey Department of Transportation Organization Chart

June 2018



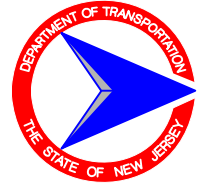
## *Deputy Commissioner*



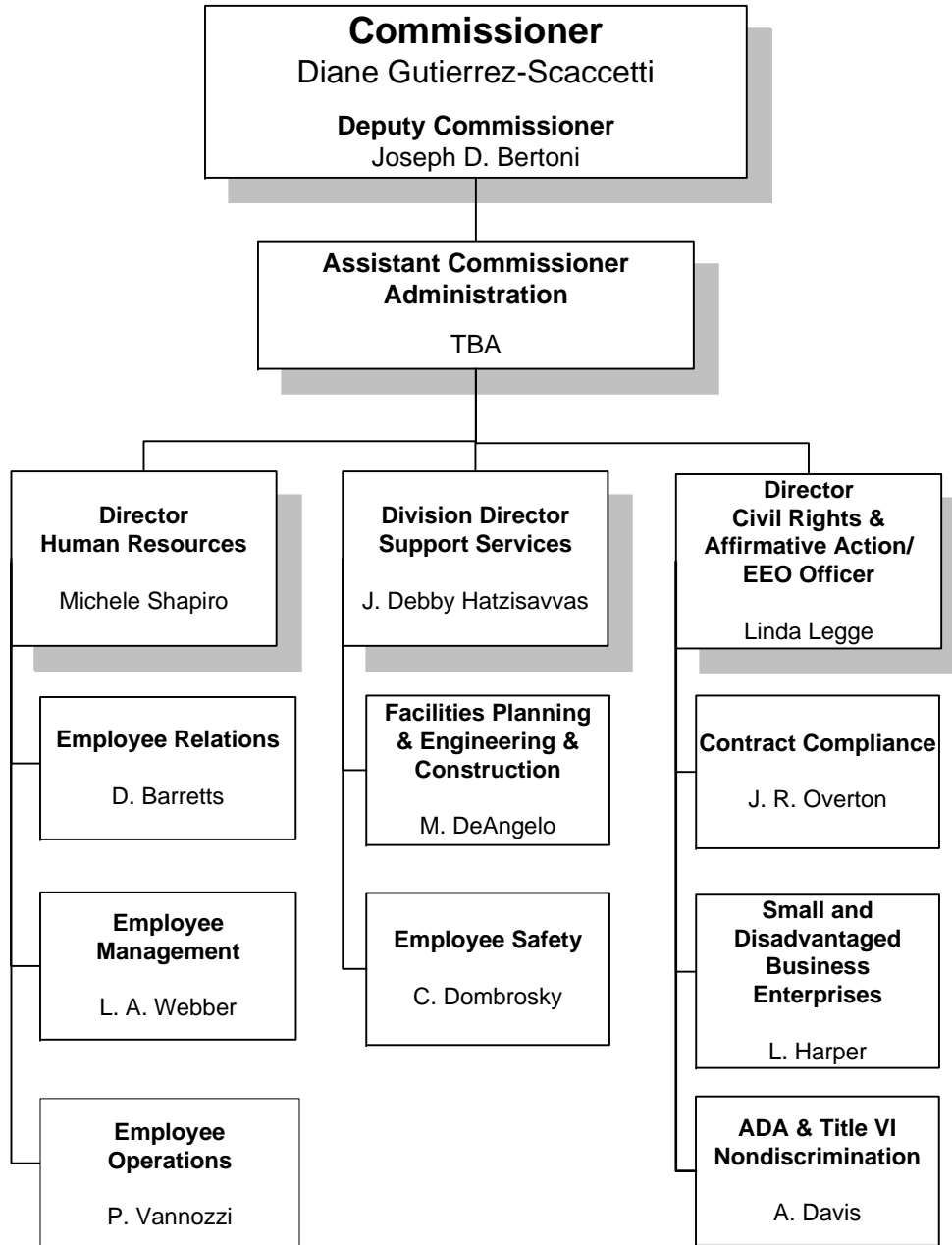


# New Jersey Department of Transportation Organization Chart

June 2018



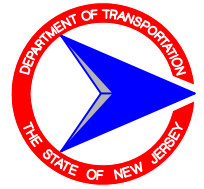
## **Administration**





# New Jersey Department of Transportation Organization Chart

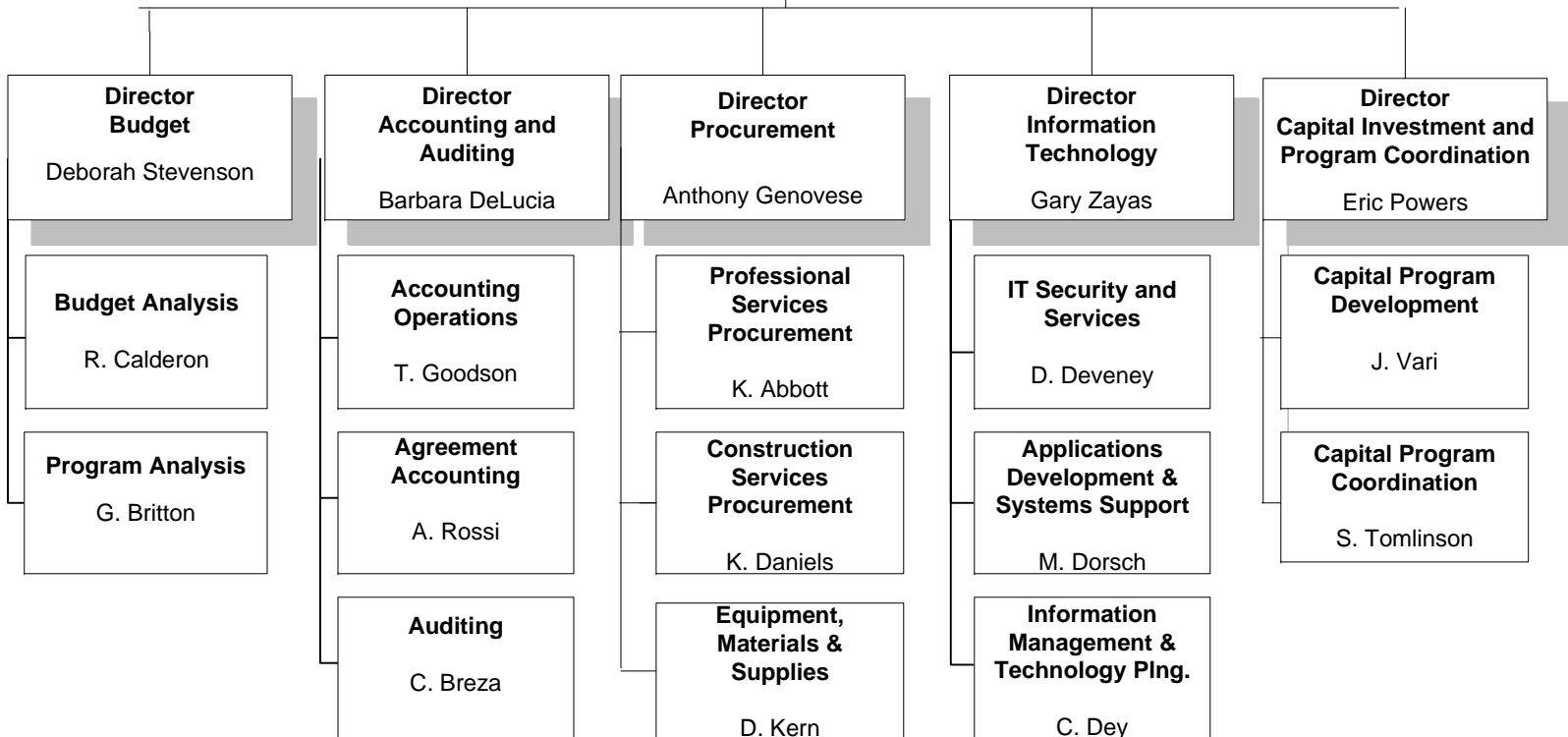
June 2018



## Chief Financial Officer

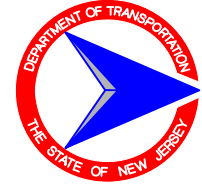
**Commissioner**  
Diane Gutierrez-Scaccetti  
**Deputy Commissioner**  
Joseph D. Bertoni

**Chief Financial Officer**  
Gary J. Brune



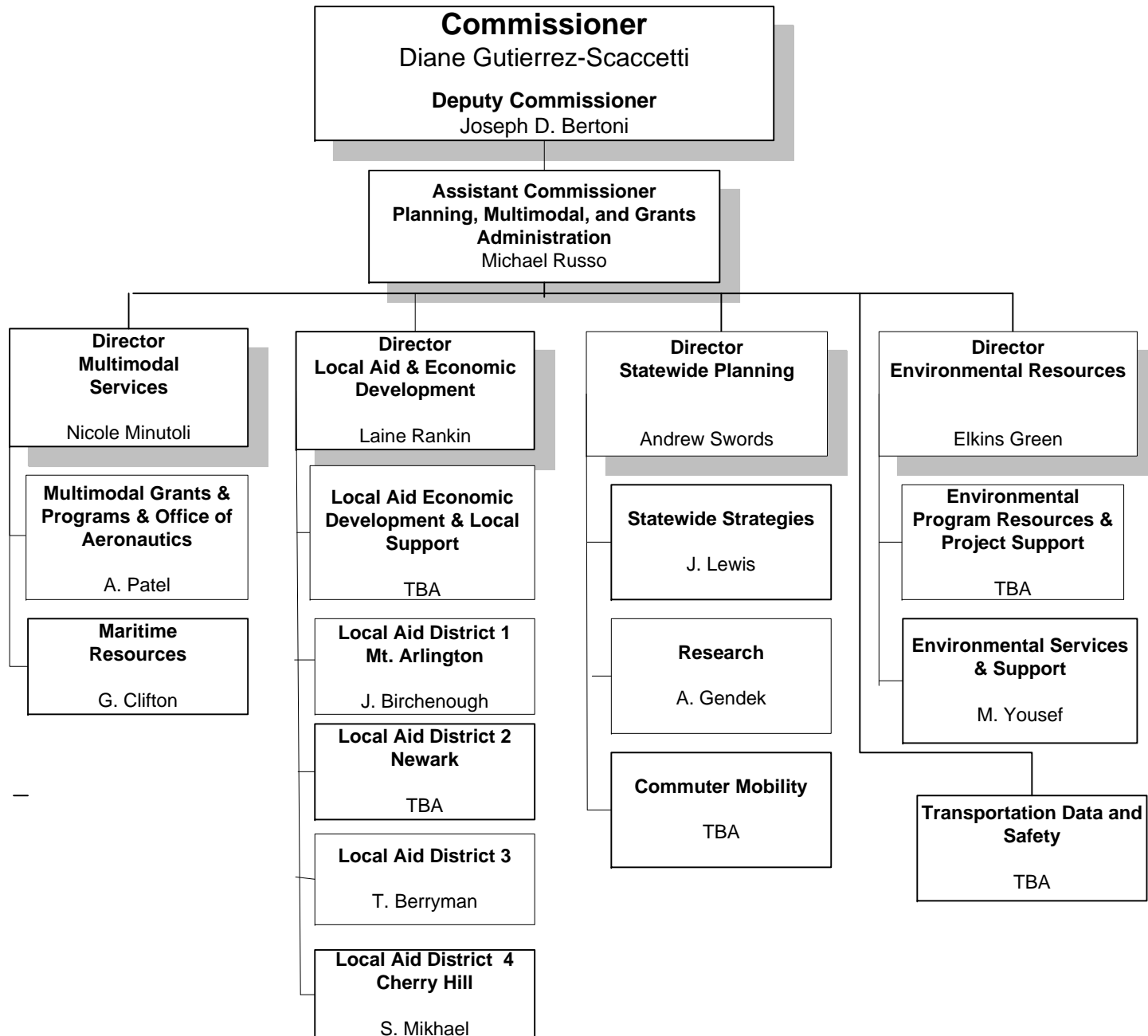


# New Jersey Department of Transportation Organization Chart



June 2018

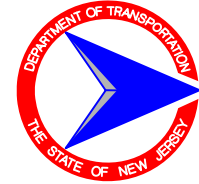
## Planning, Multimodal, and Grants Administration



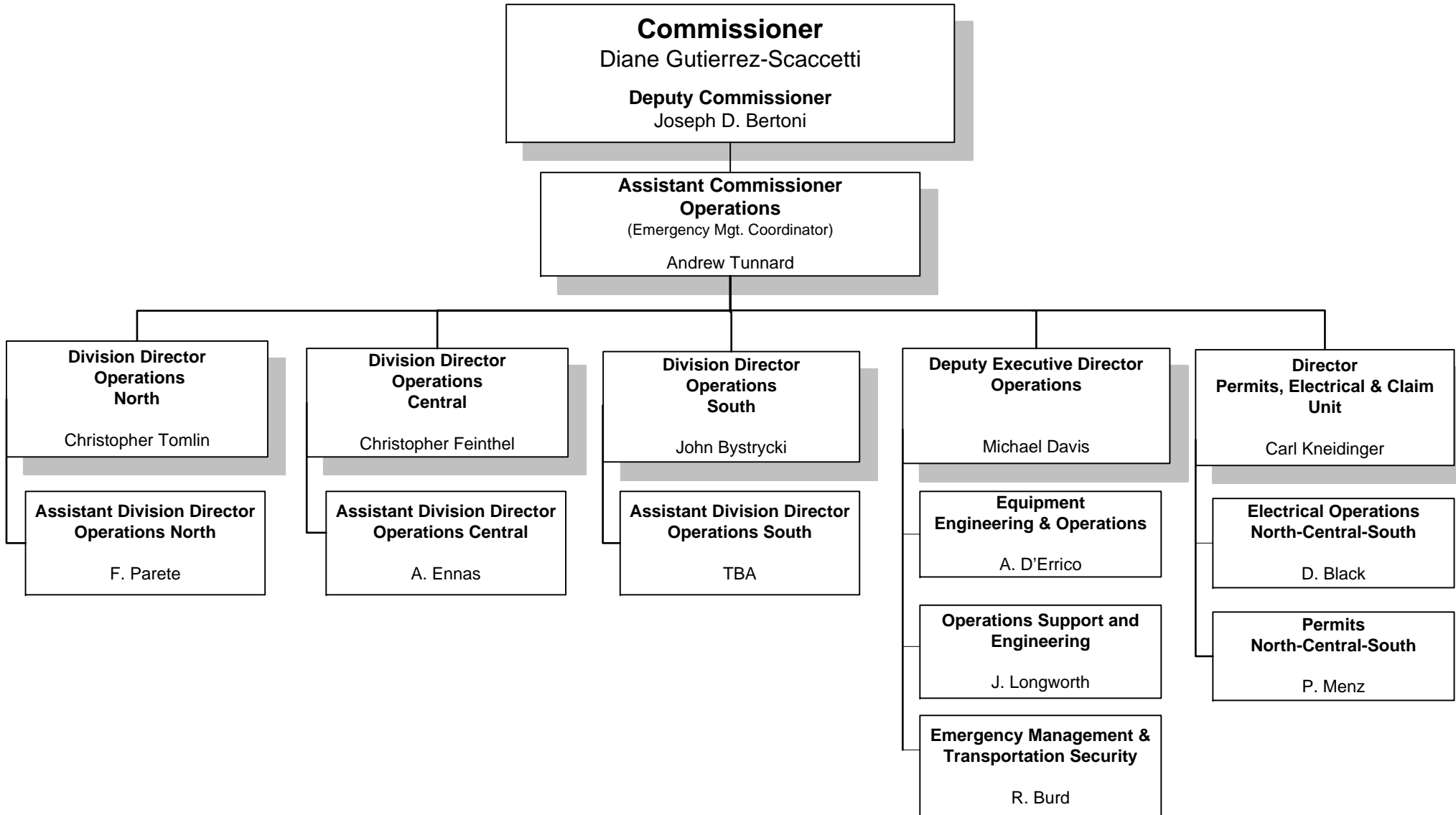


# New Jersey Department of Transportation Organization Chart

June 2018



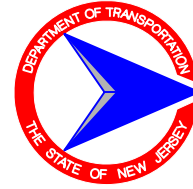
## Operations





# New Jersey Department of Transportation Organization Chart

June 2018

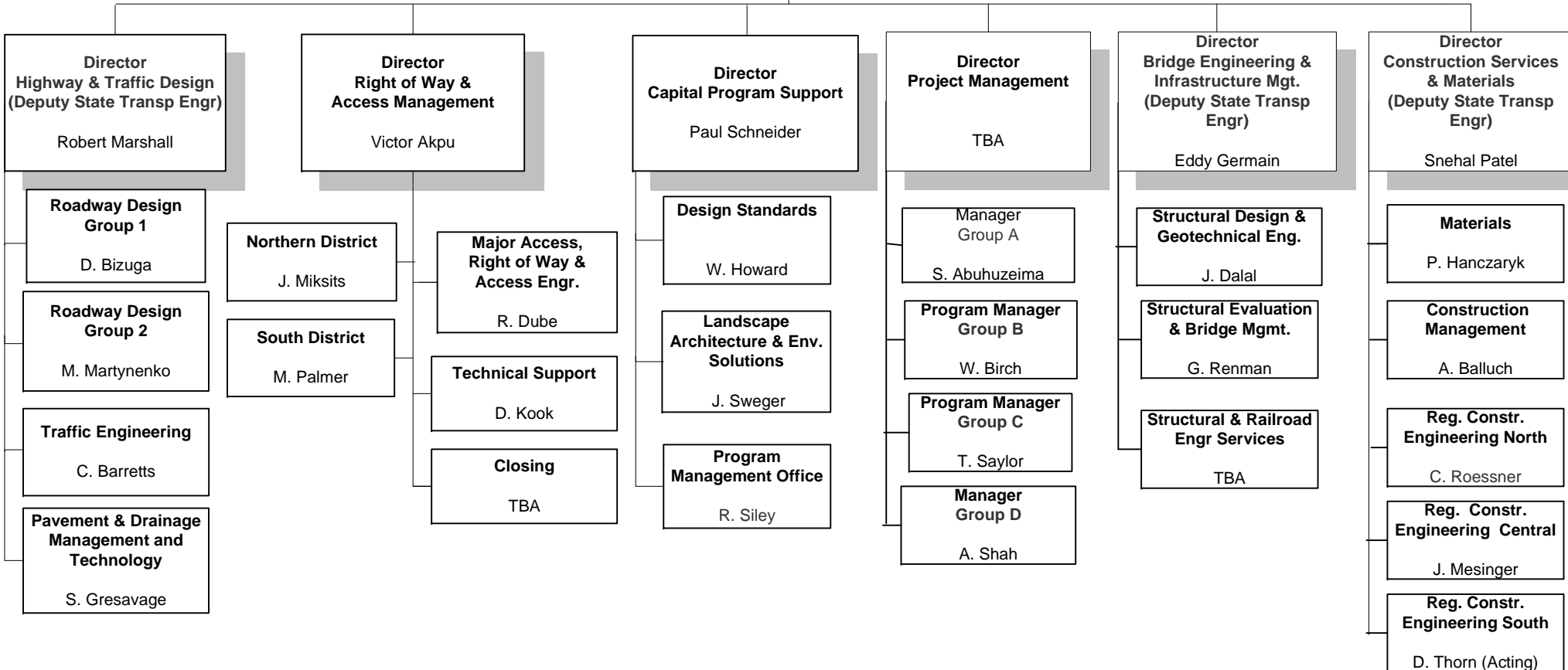


## Capital Program Management

**Commissioner**  
Diane Gutierrez-Scaccetti

**Deputy Commissioner**  
Joseph D. Bertoni

**Assistant Commissioner  
Capital Program Management  
(State Transportation Engineer)**  
Eli D. Lambert

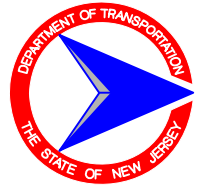




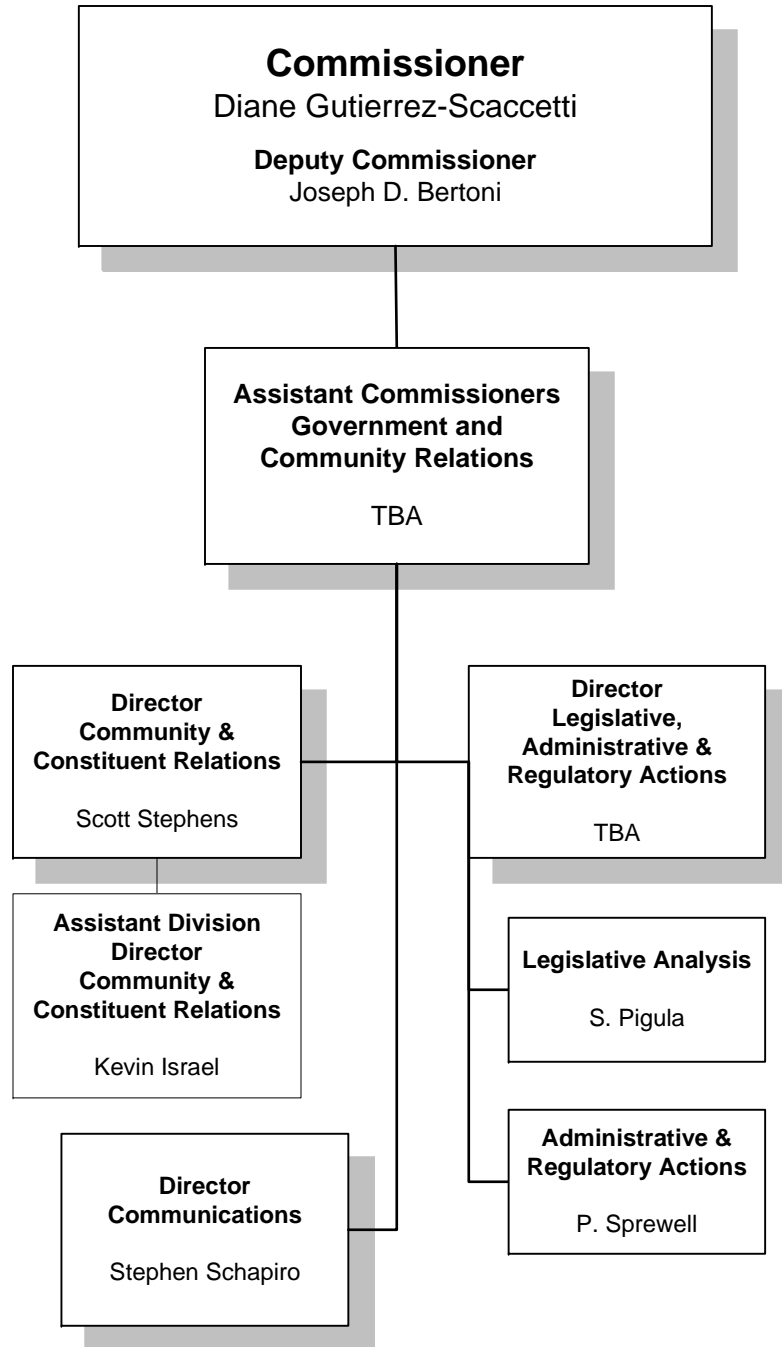


# New Jersey Department of Transportation Organization Chart

June 2018



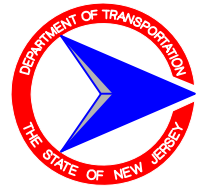
## *Government and Community Relations*





# New Jersey Department of Transportation Organization Chart

June 2018



## *Transportation Systems Management*

