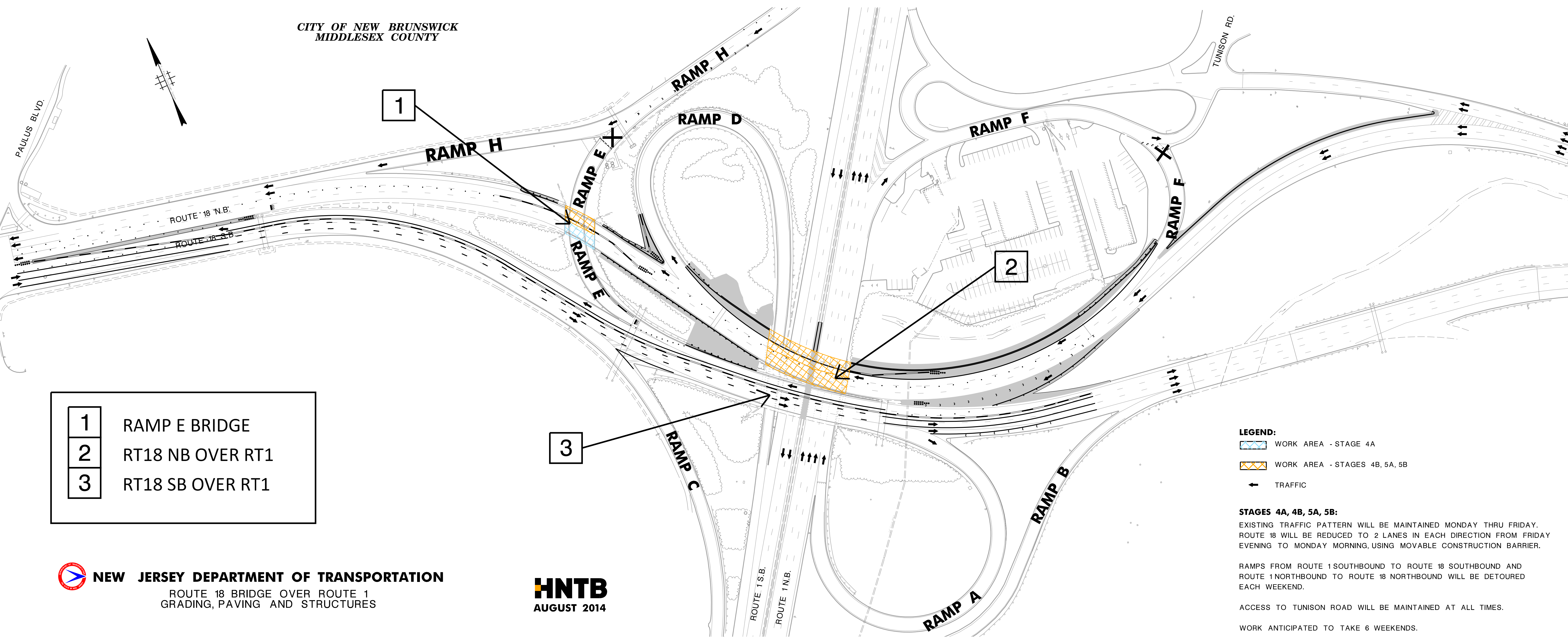
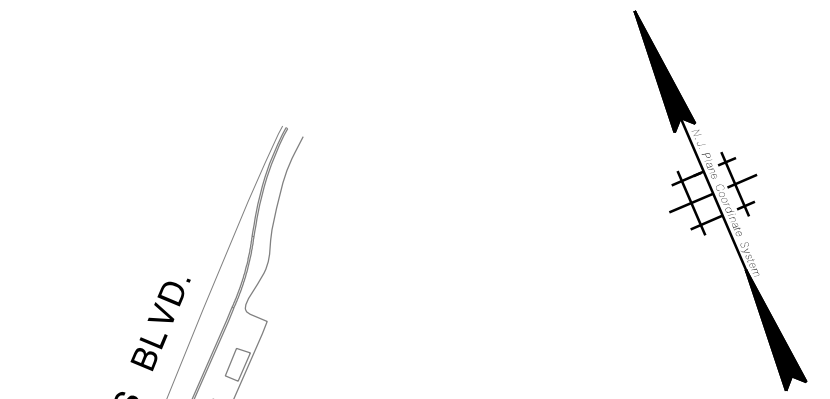


CITY OF NEW BRUNSWICK  
MIDDLESEX COUNTY



- |   |                  |
|---|------------------|
| 1 | RAMP E BRIDGE    |
| 2 | RT18 NB OVER RT1 |
| 3 | RT18 SB OVER RT1 |

- LEGEND:**
- WORK AREA - STAGE 4A
  - WORK AREA - STAGES 4B, 5A, 5B
  - TRAFFIC

**STAGES 4A, 4B, 5A, 5B:**  
EXISTING TRAFFIC PATTERN WILL BE MAINTAINED MONDAY THRU FRIDAY. ROUTE 18 WILL BE REDUCED TO 2 LANES IN EACH DIRECTION FROM FRIDAY EVENING TO MONDAY MORNING, USING MOVABLE CONSTRUCTION BARRIER.

RAMPS FROM ROUTE 1 SOUTHBOUND TO ROUTE 18 SOUTHBOUND AND ROUTE 1 NORTHBOUND TO ROUTE 18 NORTHBOUND WILL BE DETOURED EACH WEEKEND.

ACCESS TO TUNISON ROAD WILL BE MAINTAINED AT ALL TIMES.

WORK ANTICIPATED TO TAKE 6 WEEKENDS.