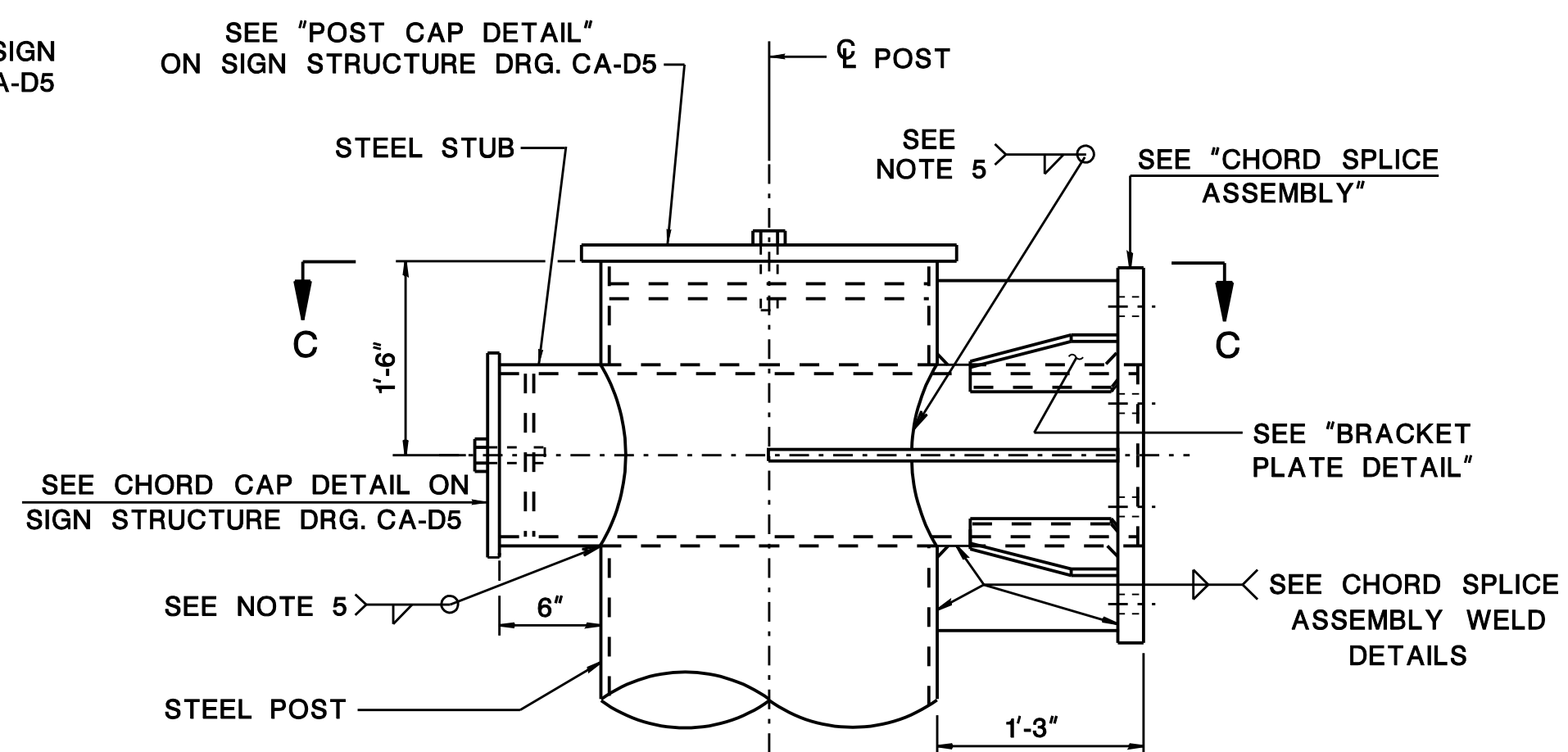
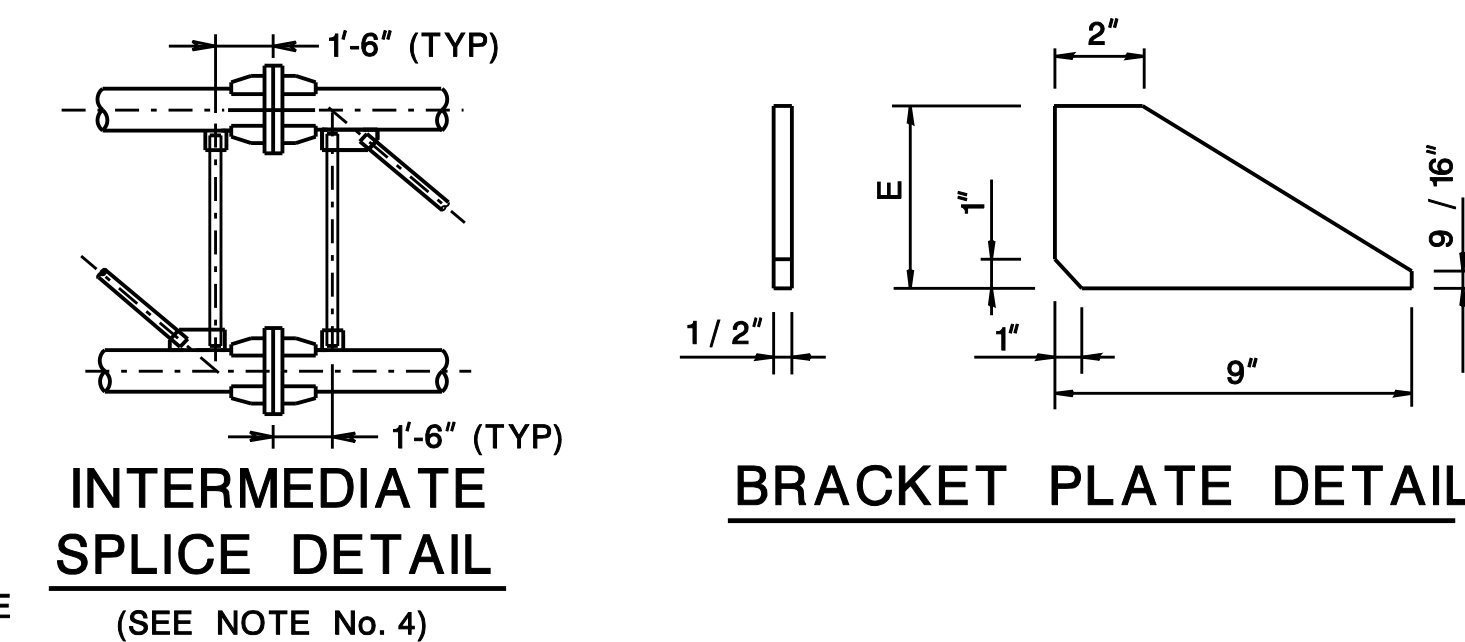


ELEVATION -TYPICAL CANTILEVER SIGN SUPPORT

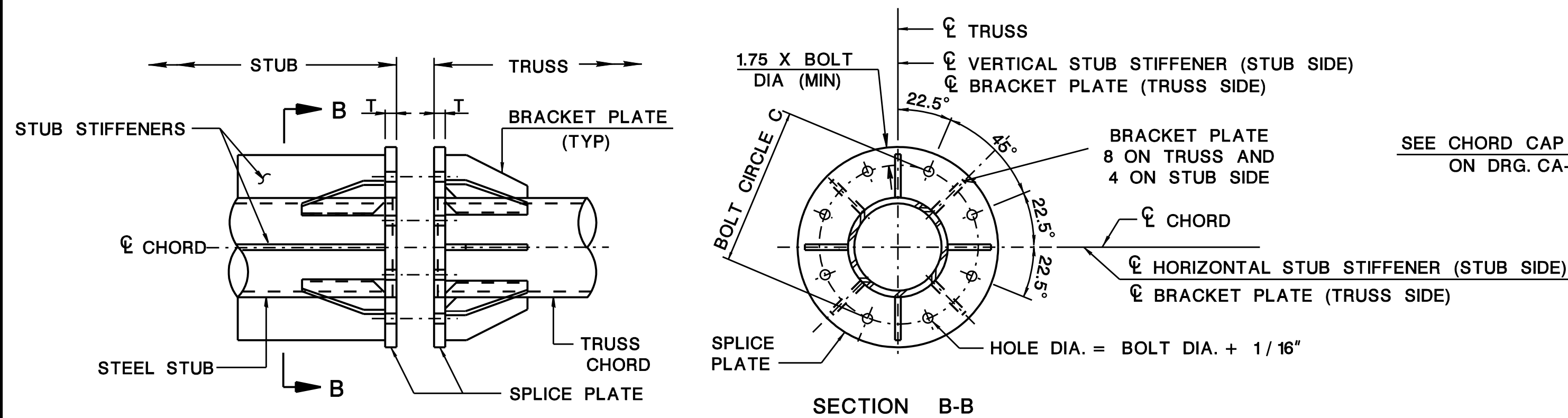


POST-STUB CONNECTION
(TWELVE-BOLT SPLICE SHOWN)

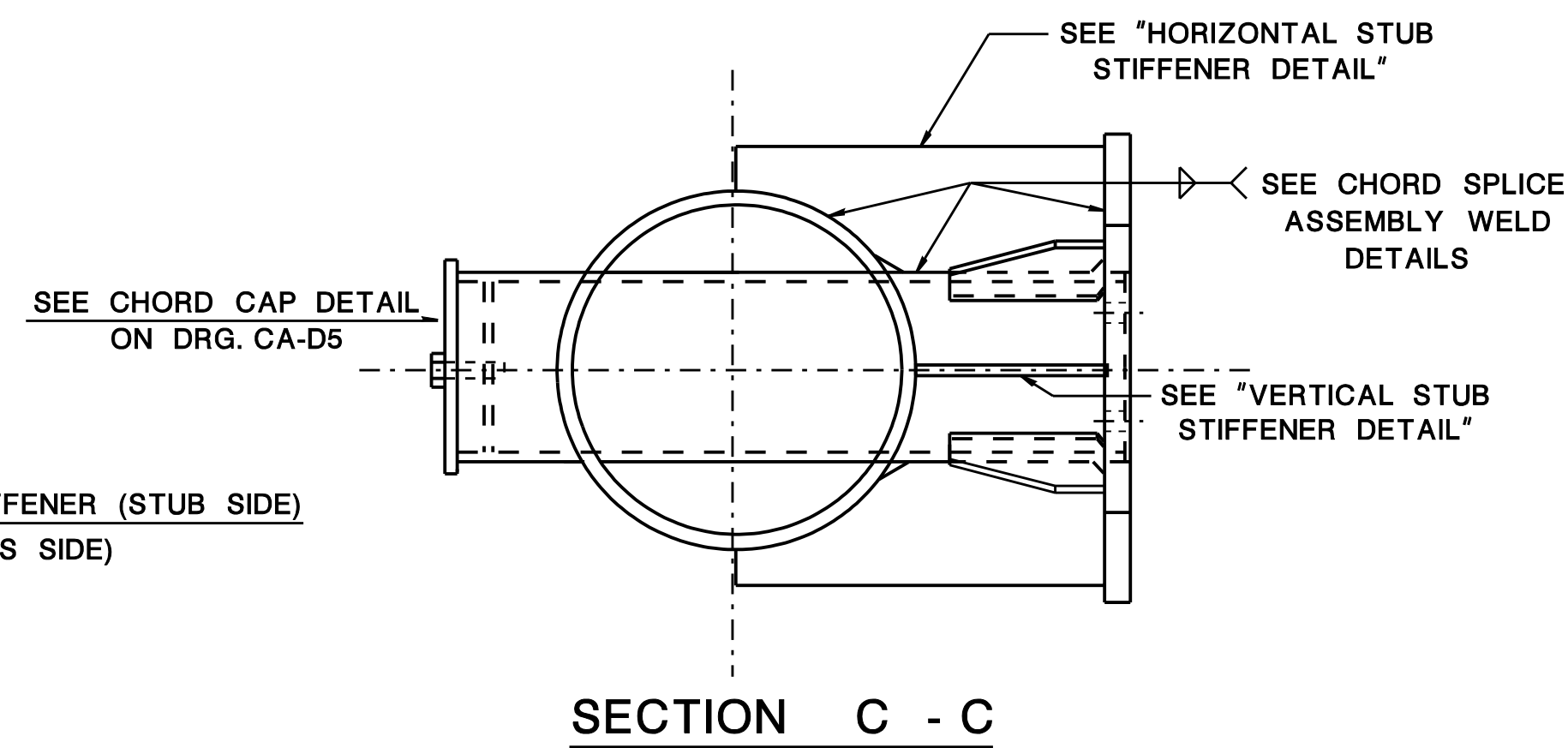


INTERMEDIATE SPLICE DETAIL
(SEE NOTE No. 4)

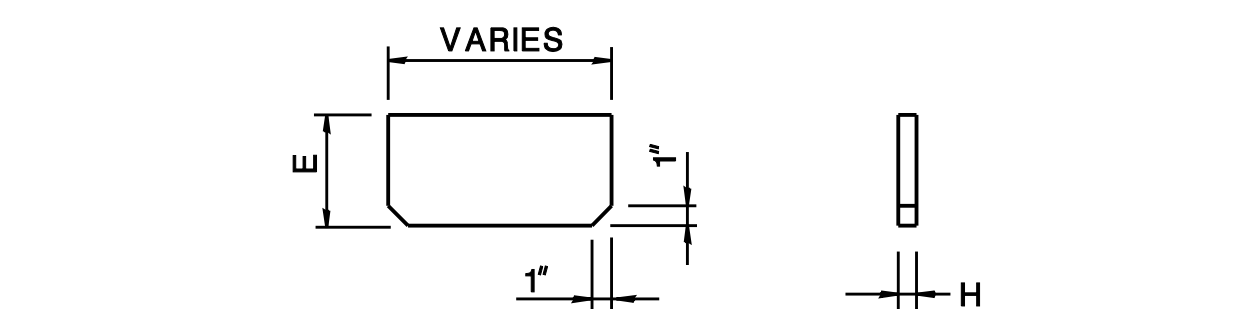
BRACKET PLATE DETAIL



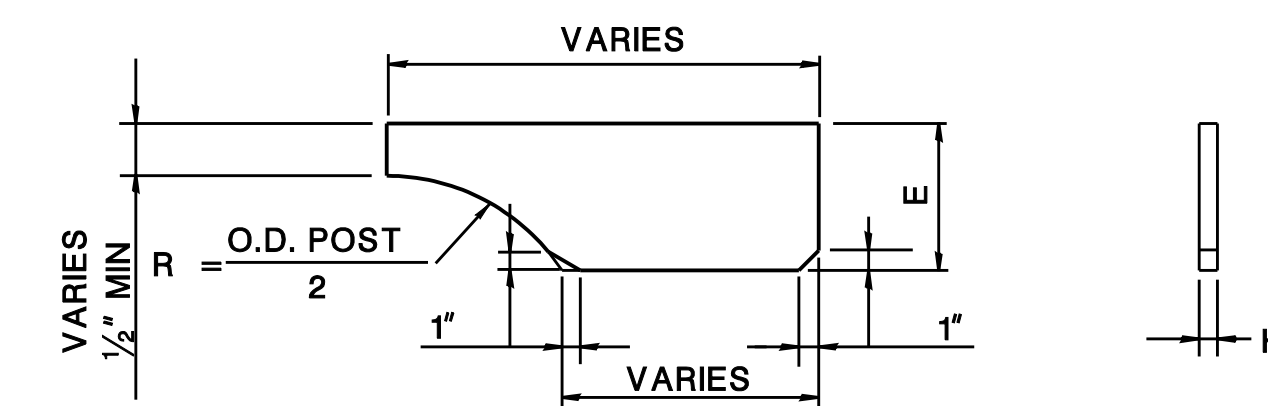
CHORD SPLICE ASSEMBLY - EIGHT-BOLT



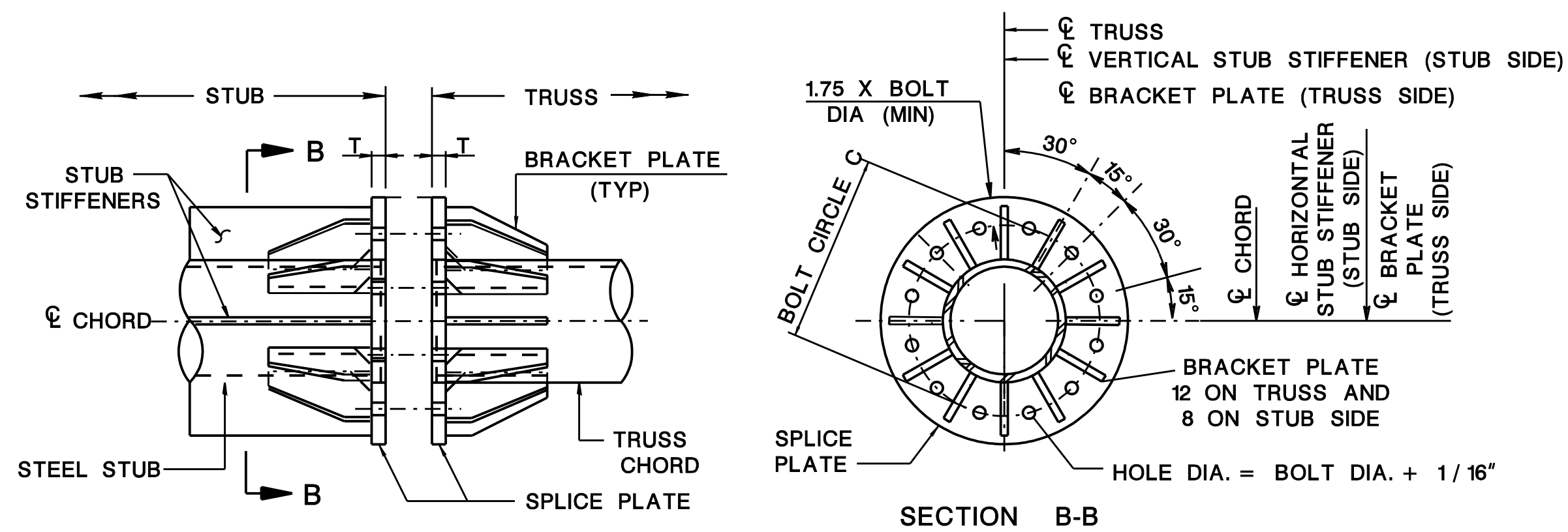
SECTION C - C



VERTICAL STUB STIFFENER DETAIL



HORIZONTAL STUB STIFFENER DETAIL

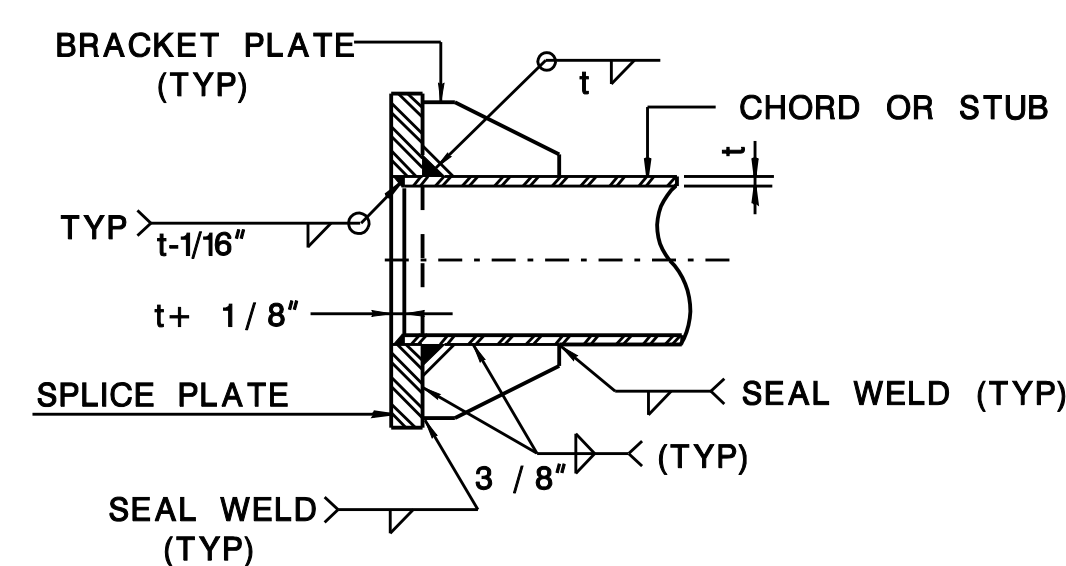


CHORD SPLICE ASSEMBLY - TWELVE-BOLT

TRUSS CHORD SPLICE ASSEMBLY							
CHORD O.D.xTHICK (IN)	SPLICE PLATES		STUB STIFFENER PLATES		SPLICE BOLTS		
	THICKNESS T (IN)	E (IN)	H (IN)	No. OF BOLTS	BOLT CIRCLE C (IN)	DIAMETER (IN)	BOLT TENSION (KIPS)
8.625x.322	1 1/2	4 3/4	5 / 8	8	16	1	51.0
8.625x.500	1 1/2	4 3/4	5 / 8	8	16	1	51.0
12.750x.375	1 1/2	6 1/2	5 / 8	12	23	1 1/8	56.0
12.750x.500	1 1/2	6 1/2	5 / 8	12	23	1 1/8	56.0
18.000x.375	2 1/4	6	5 / 8	12	27	1 1/2	103.0
18.0002x.500	2 1/4	6	3 / 4	12	27	1 1/2	103.0

NOTES:

- BOLT HOLES IN SPLICE PLATES SHALL BE DRILLED TO 1/16" LARGER THAN THE BOLT SIZE SPECIFIED, UNLESS OTHERWISE NOTED BY THE DESIGNER.
- ASTM A325 SPLICE BOLTS SHALL BE HEAVY HEXAGON TYPE AND SHALL BE FURNISHED WITH HEAVY HEXAGON NUTS AND WASHERS.
- THE THREADED PORTION OF THE SPLICE BOLTS SHALL BE EXCLUDED FROM THE SHEAR PLANE OF THE SPLICE.
- CHORD INTERMEDIATE SPLICING WILL NOT BE PERMITTED UNLESS AUTHORIZED BY THE RE. WHEN INTERMEDIATE SPLICING IS AUTHORIZED, THE SPLICE SHALL BE AS SHOWN ON THE INTERMEDIATE SPLICE DETAIL AND AS PER CHORD SPLICE ASSEMBLY TABLE ON THIS SHEET.
- IF FILLET WELD SIZE IS NOT SHOWN ON DETAILS, THE WELD SIZE SHALL BE THE SAME AS THE THICKNESS OF THE THINNER PART BEING JOINED.
- FOR THE OUTSIDE DIAMETER (O.D.) OF THE STEEL STUB PIPE SEE SCHEDULE OF STRUCTURES ON SIGN STRUCTURE DRG. CA-D2.
- THE PROVISIONS OF THE NJDOT STANDARD SPECIFICATIONS SHALL BE FOLLOWED IN FURNISHING THE REQUIRED SPLICE ASSEMBLY.
- REFER TO THE NJDOT STANDARD SPECIFICATIONS FOR THE SPLICE BOLT TIGHTENING PROCEDURES. WHEN CALIBRATED WRENCHES ARE USED FOR BOLT INSTALLATION, THEY SHALL BE SET TO PROVIDE A TENSION THAT IS SPECIFIED IN THE TABLE ABOVE.
- HORIZONTAL AND VERTICAL STUB STIFFENER PLATE DIMENSIONS MAY BE VARIED TO ACCOUNT FOR CAMBER (SEE CAMBER DETAIL ON SIGN STRUCTURE DRG. CA-D5).



CHORD SPLICE ASSEMBLY WELD DETAIL

SIGN STRUCTURE DRG. CA-D4

NEW JERSEY DEPARTMENT OF TRANSPORTATION
BUREAU OF STRUCTURAL ENGINEERING

**CANTILEVER SIGN SUPPORT STRUCTURES
TRUSS AND POST DETAILS - SHEET 1**

ROUTE: SECTION

SCALE : NONE
BRIDGE SHEET NO. OF