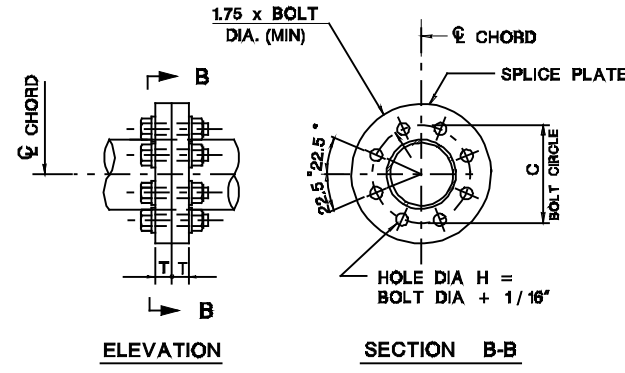
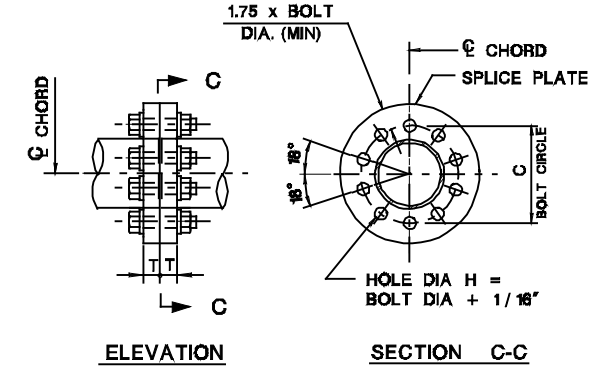


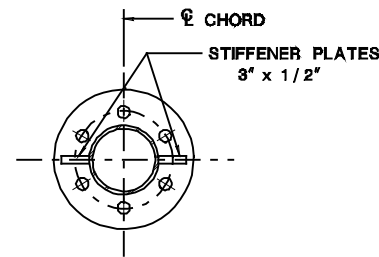
SIX-BOLT CHORD SPLICE DETAIL



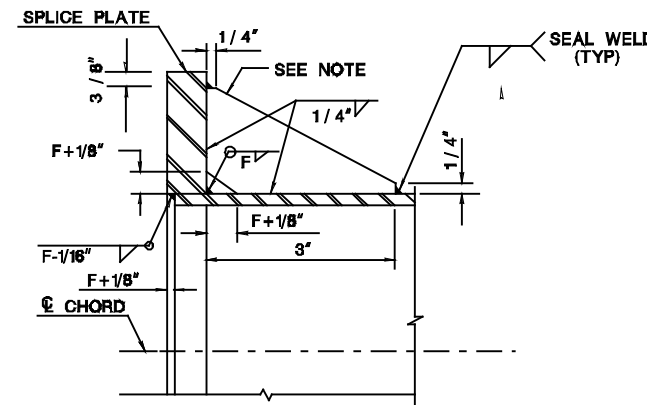
EIGHT-BOLT CHORD SPLICE DETAIL



TEN-BOLT CHORD SPLICE DETAIL



CHORD SPLICE WITH STIFFENERS  
(SIX-BOLT SPLICE SHOWN)



CHORD SPLICE WELD DETAIL

**NOTES:**

1. ASTM A325 SPLICE BOLTS SHALL BE HEAVY HEXAGON TYPE AND SHALL BE FURNISHED WITH HEAVY HEXAGON NUTS AND WASHERS.
2. THE THREADED PORTION OF THE SPLICE BOLTS SHALL BE EXCLUDED FROM THE SHEAR PLANE OF THE SPLICE.
3. THE PROVISIONS OF THE NJDOT STANDARD SPECIFICATIONS SHALL BE FOLLOWED IN FURNISHING THE REQUIRED CHORD SPLICE ASSEMBLY.
4. REFER TO THE NJDOT STANDARD SPECIFICATIONS FOR SPLICE BOLT TIGHTENING PROCEDURES. WHEN CALIBRATED WRENCHES ARE USED FOR BOLT INSTALLATION, THEY SHALL BE SET TO PROVIDE THE TENSION THAT IS SPECIFIED IN THE TABLE PROVIDED HEREIN.

**NOTES:**

1. CHORD SPLICE STIFFENER PLATES ARE TO BE USED FOR CHORD SPLICES LOCATED AT MIDSPAN (CENTERLINE) OF TRUSS ONLY (I.e. 2-SEGMENT, 4-SEGMENT AND 6-SEGMENT SPANS). (SEE CHORD SPLICE ASSEMBLY WELD DETAIL FOR MORE INFORMATION).
2. CHORD SPLICE STIFFENER PLATES ARE SHOWN HORIZONTAL. STIFFENER PLATES MAY BE REPOSITIONED, AS NECESSARY, TO PROVIDE SUFFICIENT CLEARANCE FOR BOLTING OF THE SPLICE, BUT THEY SHALL ALWAYS BE POSITIONED OPPOSITE TO EACH OTHER AS SHOWN.

TRUSS CHORD SPLICES						
CHORD O.D.xTHICK (IN)	SPLICE PLATES		SPLICE BOLTS			
	THICKNESS T	WELD SIZE F	No. OF BOLTS	BOLT CIRCLE C	DIAMETER	BOLT TENSION (KIPS)
3.500x.216	1/2"	1/4"	6	6 1/8"	3/4"	28
4.000x.226	1/2"	1/4"	6	8 3/8"	3/4"	28
4.500x.237	1/2"	1/4"	6	7 1/8"	3/4"	28
5.563x.258	1/2"	3/32"	6	9"	1"	51
6.625x.280	2"	3/32"	8	10 1/4"	1"	51
8.625x.322	2"	5/16"	8	1'-1"	1 1/4"	71
10.750x.365	2"	11/32"	8	1'-4"	1 1/2"	103
12.750x.375	2"	3/8"	10	1'-6"	1 1/2"	103
14.000x.375	2"	3/8"	10	1'-7 1/4"	1 1/2"	103

SIGN STRUCTURE DRG. OH-D6  
NEW JERSEY DEPARTMENT OF TRANSPORTATION  
BUREAU OF STRUCTURAL ENGINEERING

OVERHEAD SIGN SUPPORT STRUCTURES  
STEEL TRUSS DETAILS - SHEET 2  
ROUTE: SECTION

SCALE : NONE   
BRIDGE SHEET NO. OF