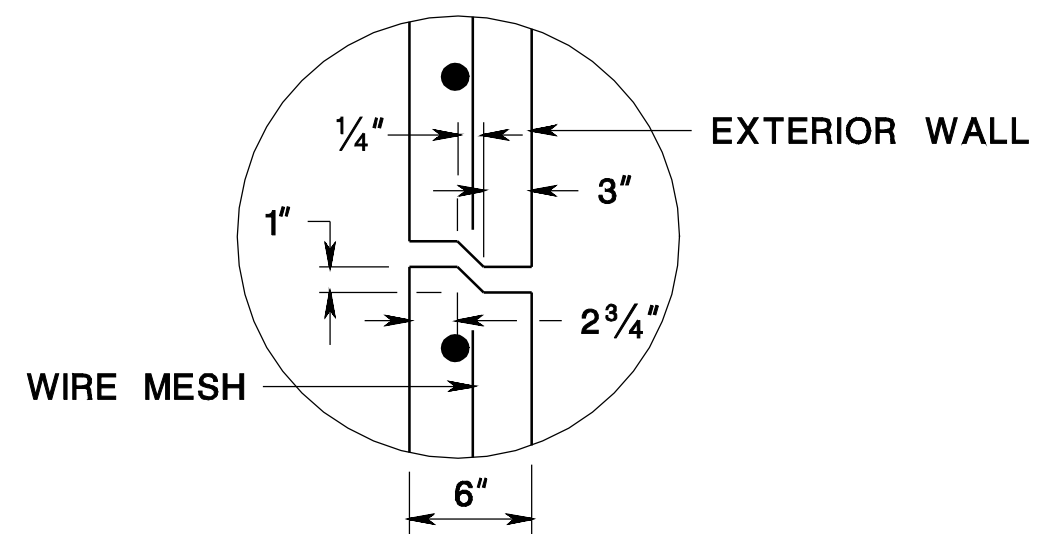


**CONNECTION OF PIPE AND INLET FOR PRECAST INLET**

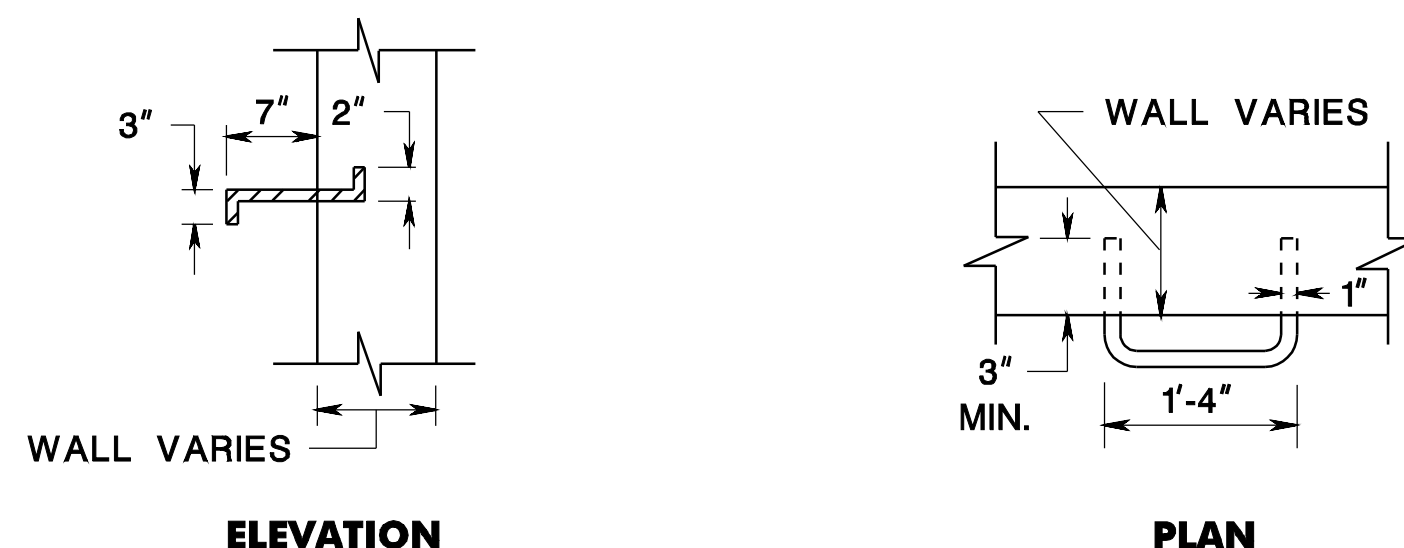
CD-602-1.1



**RISER JOINT DETAIL FOR PRECAST INLETS**

**NOTE:**  
JOINT TO BE GROUTED WITH MORTAR BY CONTRACTOR

CD-602-1.2



**LADDER RUNG DETAIL**

**NOTE:**  
LADDER RUNGS FACING TRAFFIC 12" C TO C

CD-602-1.3

**GENERAL NOTES**

- INLETS MAY BE CONSTRUCTED OF BRICK, CONCRETE, CONCRETE BLOCK OR PRECAST CONCRETE. WALLS SHALL BE 8 INCHES THICK IF BRICK AND 6 INCHES THICK IF CONCRETE, CONCRETE BLOCK OR PRECAST CONCRETE. INLET FOUNDATIONS AND INVERTS SHALL BE CLASS B CONCRETE.
- CORBELLING OF INLET WALLS WILL BE PERMITTED AT THE RATE OF 1/2 INCH PER 8 INCHES OF HEIGHT; MAXIMUM CORBEL 6 INCHES PER WALL.
- EXCEPT FOR INLETS TYPE A AND C, FOUNDATIONS AND INVERTS SHALL BE CONSTRUCTED IN TWO STAGES, AND THE BOTTOM OF THE FOOTINGS SHALL BE 8 INCHES BELOW THE OUTER WALL OF THE LOWEST PIPE IN THE INLET.
- WHEN THE DEPTH OF AN INLET THAT IS NOT PRECAST EXCEEDS 10 FEET AS MEASURED FROM TOP OF GRATE TO INVERT, WALLS BELOW A DEPTH OF 8 FEET SHALL BE 12 INCHES THICK AND THE DEPTH OF FOUNDATION INCREASED TO 12 INCHES. WHEN ROCK IS ENCOUNTERED, THE DEPTH OF THE FOUNDATION SHALL NOT BE INCREASED.
- INLET FOUNDATIONS WHICH ARE PRECAST SHALL BE PLACED ON A 6 INCH THICK BED OF COMPACTED COARSE AGGREGATE #57. THE COARSE AGGREGATE SHALL EXTEND 6 INCHES BEYOND THE HORIZONTAL LIMITS OF THE INLET FOUNDATION.
- CASTINGS FOR PRECAST INLETS SHALL BE ADJUSTED TO GRADE WITH COURSES OF BRICK, AS REQUIRED, 12 INCHES MAXIMUM.
- WHEN THE DEPTH OF A PRECAST INLET EXCEEDS 10 FEET AS MEASURED FROM TOP OF GRATE TO INVERT, THE FOUNDATION SHALL BE INCREASED TO 12 INCHES. WHEN ROCK IS ENCOUNTERED, THE DEPTH OF THE FOUNDATION SHALL NOT BE INCREASED.
- MINIMUM WALL REINFORCEMENT FOR PRECAST INLETS TYPES A, B, C, E, D-1, D-2 AND B MODIFIED:

DEPTH BELOW TOP OF GRATE	HORIZONTAL REINF.	VERTICAL REINF.	WALL THK.
0' TO 10'-0"	#13 @ 10" C.C.	#13 @ 18" C.C.	6"
10'-1" TO 15'-0"	#13 @ 8" C.C.	#13 @ 18" C.C.	6"
15'-1" TO 20'-0"	#13 @ 6" C.C.	#13 @ 18" C.C.	6"

REINFORCING SHOWN FOR PRECAST INLETS IS THE MINIMUM REQUIRED. ADDITIONAL REINFORCING FOR HANDLING IS THE RESPONSIBILITY OF THE CONTRACTOR.

ALTERNATE REINFORCEMENT

DEPTH BELOW TOP OF GRATE	REINFORCEMENT
0' TO 10'-0"	WWF 3 x 6 W6 WIRES SPACED AT 3" TO RUN HORIZONTAL IN ALL CASES.
10'-1" TO 15'-0"	WWF 3 x 6 W6 ADD #10 REINFORCEMENT STEEL @ 18" HORIZONTAL.
15'-1" TO 20'-0"	WWF 3 x 6 W6 ADD #10 REINFORCEMENT STEEL @ 9" HORIZONTAL OR ADD #13 REINFORCEMENT STEEL AT 15" HORIZONTAL.
- ALL INLETS AND MANHOLES SHALL BE CONSTRUCTED IN ACCORDANCE WITH THE CURRENT NJDOT STANDARD SPECIFICATIONS FOR ROAD AND BRIDGE CONSTRUCTION AND ITS AMENDMENTS.
- DIMENSIONS, WEIGHTS AND OTHER CRITERIA SHOWN ON THESE DETAILS ARE FOR CLASS 30B CAST IRON ONLY.

CD-602-1.6

REINFORCEMENT STEEL IS IN METRIC UNITS.

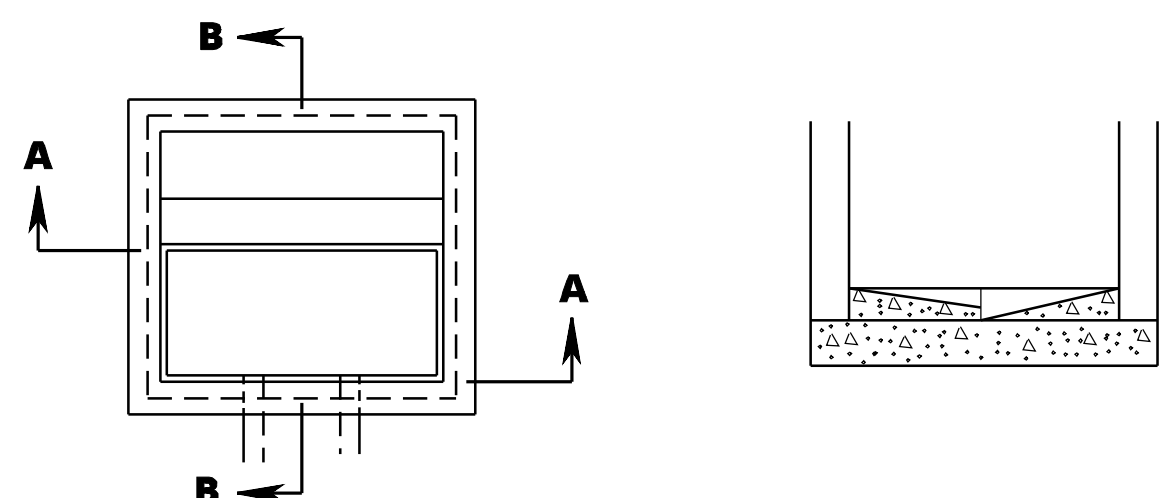
**INLET GENERAL DETAILS**

N.T.S.

CD-602-1

NEW JERSEY DEPARTMENT OF TRANSPORTATION

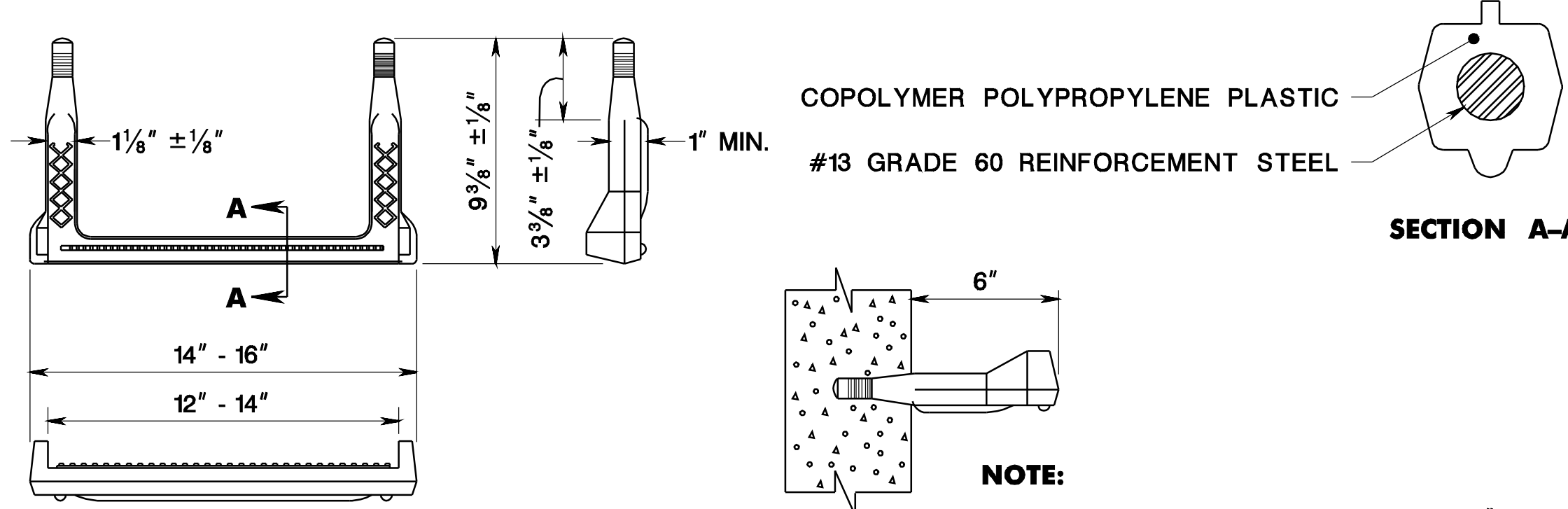
**CONSTRUCTION DETAILS**



**NOTE:**  
FOUNDATION AND INVERT TO BE CONSTRUCTED IN TWO STAGES. THE TOP SURFACE OF STAGE 1 TO BE LEFT ROUGH.

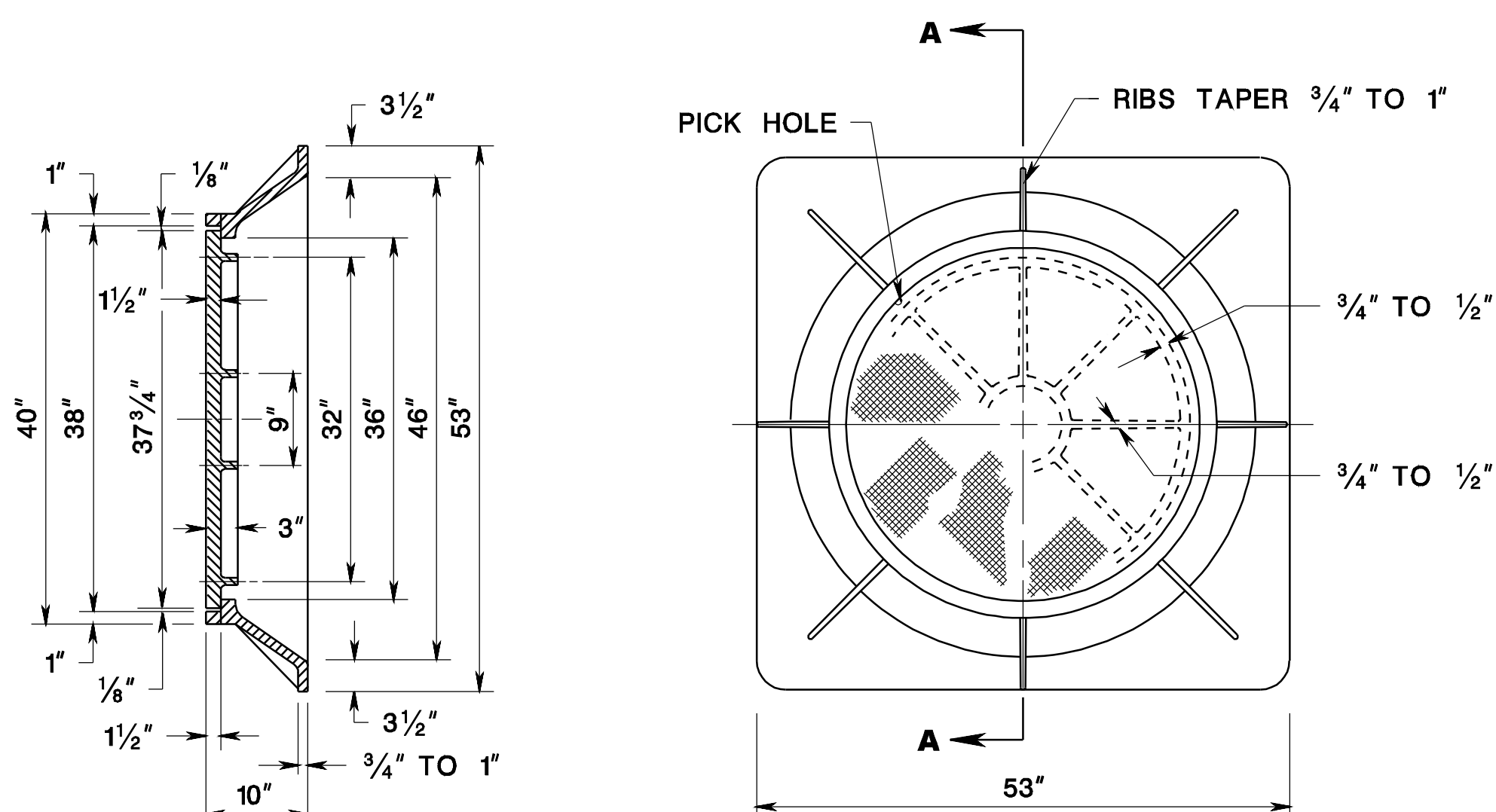
**DETAIL OF INVERT FOR INLET WITHOUT CONTINUOUS PIPE**

CD-602-1.4



**COPOLYMER POLYPROPYLENE PLASTIC LADDER RUNG**

CD-602-1.5

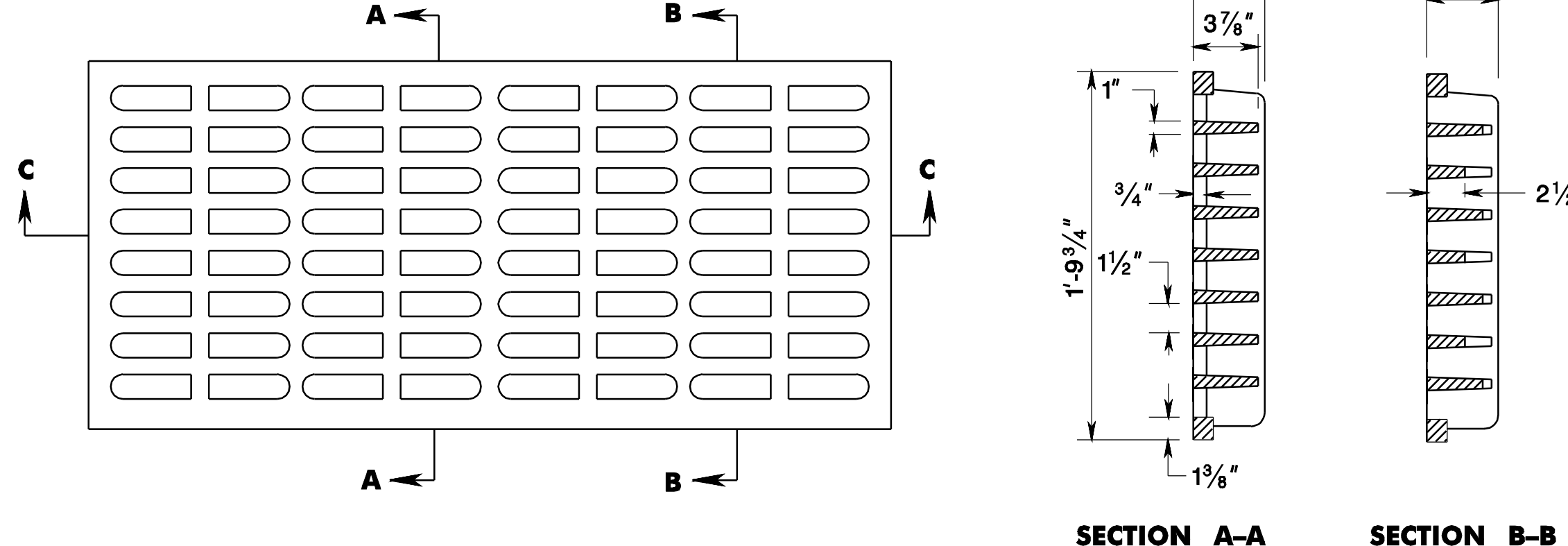


**NOTE:**  
SEE GENERAL NOTE 10, CD-602-1.6

MINIMUM WEIGHTS  
WEIGHT OF FRAME = 630#  
WEIGHT OF COVER = 400#

**NEW MANHOLE CASTING, SQUARE FRAME, CIRCULAR COVER**

CD-602-1.7



MIN. WEIGHT 325 LBS.

**SECTION A-A SECTION B-B**

**NOTE:**  
SEE GENERAL NOTE 10, CD-602-1.6

**BICYCLE SAFE GRATE (CAST IRON)**

CD-602-1.8

pen table= \\njdotp1rws\vsystem\NJDOTWS\Projects\NJDOTEng\Plot\TBLS\Roadway\basic.tbl  
scale=30.000000;1.000000  
date=17-DEC-2007 09:42  
ID=TPXBHAY  
BDC0703-ORIGINAL SHEET  
file=