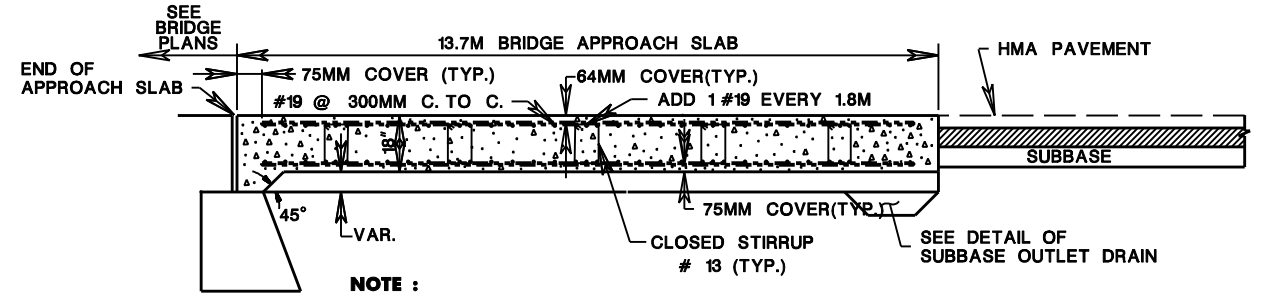
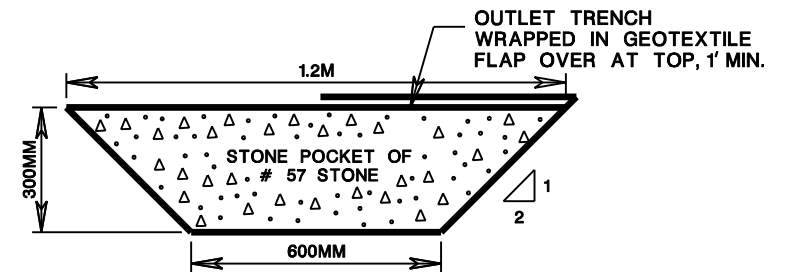


PLAN OF BRIDGE APPROACH SLABS



SECTION A-A OF BRIDGE APPROACH SLABS

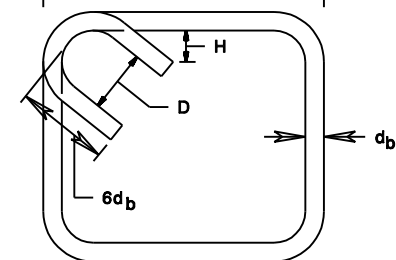


SUBBASE OUTLET DRAIN

NOTES:

- EXTRA BAR FOR EMBEDDED BEAM (EB) PATTERN TO BE SPACED NOT MORE THAN 1.8 METER ON CENTERS.
- INSTALL REBAR CHAIRS TO SEPARATE TOP AND BOTTOM MATS (AS SHOWN).
- WIDER/LONGER SLABS MAY BE CONSTRUCTED PROVIDED THE C TO C SPACING OF EB EXTRA REBAR IS NOT MORE THAN 1.8 METER.
- ALTERNATE DESIGN WITH STIRRUPS: CLOSED STIRRUPS SUBSTITUTED FOR REBAR CHAIRS. SPACING NOT MORE THAN 915 MM C TO C. STIRRUP MUST ENCLOSE TOP 3 AND BOTTOM 3 BARS.
- ALL REINFORCEMENT TO BE CORROSION PROTECTED.
- CONSTRUCT APPROACH SLABS WITH CLASS A CONCRETE. HPC MAY BE USED FOR THE APPROACH SLAB CONSTRUCTION. APPROPRIATE PAY ITEM AS SPECIFIED IN THE STANDARD SPECIFICATION SHOULD BE USED.
- THE APPROACH SLAB SHALL BE SAWCUT GROOVED FINISHED. THE METHODS USED SHALL BE ACCORDING TO THE REQUIREMENTS SPECIFIED IN THE NJDOT STANDARD SPECIFICATIONS FOR CONCRETE DECK SLABS.

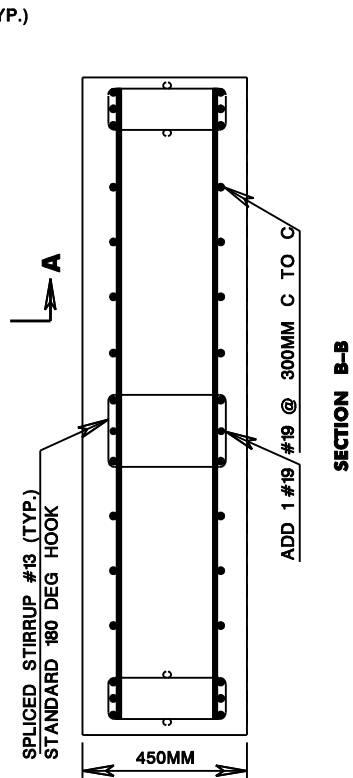
VARIES FOR SKEW BRIDGE AT THE END



CLOSED STIRRUP # 13 (TYP.)

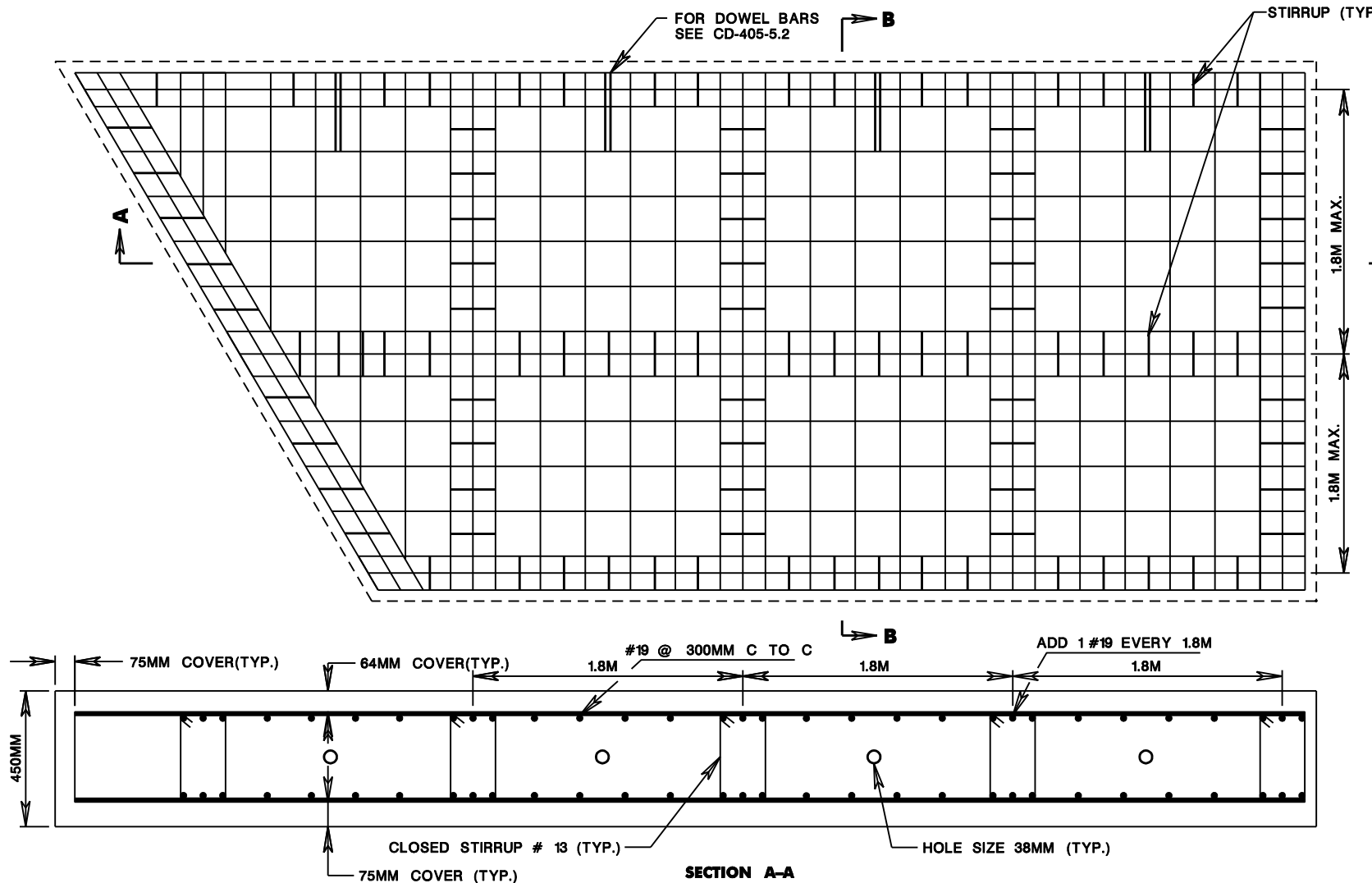
NOTES:

- REINFORCING BARS ARE IN METRIC UNITS.
HMA = HOT MIX ASPHALT
HPC = HIGH PERFORMANCE CONCRETE

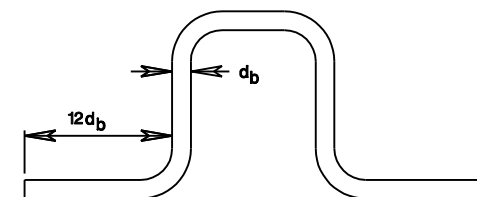


SECTION B-B

SPLICED STIRRUP #13 (TYP.) STANDARD 180 DEG HOOK



SECTION A-A



ALTERNATE # 13 STIRRUP SPLICED IN PAIRS

BCD-10

NEW JERSEY DEPARTMENT OF TRANSPORTATION

**BRIDGE APPROACH SLABS
ADJOINING
HMA PAVEMENT**

129A
129