

**2020 FFA Landscape Design Career Development
Event Supplemental Information**

1. Type of House:

The Baker home is a newly renovated two-story farmhouse situated on the corner lot of a quiet suburban street in Central New Jersey. The lot, which measures 100 feet deep and 120 feet wide, is adjacent to the property of a small elementary school to the east, and another residence to the north. The house has a large open front porch facing North West Street, and a screened three-season porch that can be accessed either through the living room or the master bedroom.

2. Lot:

The Baker's lot is relatively level, with the exception of a low area between the house and the driveway/garage that remains wet for several days following significant rain events. There are two large ash trees on the southeast corner of the property, and several river birches to the east of the garage. A low chainlink fence runs along the northern and eastern edges.

3. Family:

Sam and Abigail Baker have recently moved into the farmhouse with their six-year-old twin boys who will attend the elementary school next door. Sam is an ecologist, and Abigail is an entomologist. Both are avid birders, and neither are particularly fond of the chainlink fence.

4. Design:

The Bakers know that the ash trees will need to be cut down due to the emerald ash borer, and they want to take advantage of this "clean slate" to create a home landscape that features sustainable design and native plants. The design should take into consideration both form and function – seasonal interest, bird and insect habitat, water management, privacy for the three-season porch and back yard, etc.

In addition, the Bakers have spoken with the schoolboard, and would like to fund the installation of a school garden and outdoor classroom on the school grounds just to the east of the fence. The classroom area (approximately 20' x 20') should include seating and be able to accommodate up to 20 students. The garden area should include four raised beds (4' x 8') for vegetables and a compost bin/area (3' x 3'). For both areas, consider hardscape materials, connection, and sun/shade.

5. Scope of the work:

Budget: \$40,000.00 (plus or minus 10%) for materials only.

Plants should be selected which provide interest throughout the year, including annuals, perennials, evergreens, and deciduous plants. For more information on utilizing native plants, please visit <https://njaes.rutgers.edu/fs1140/>. A listing of nurseries and plant

suppliers that carry native plants can be found at <https://www.jerseyyards.org/jersey-friendly-plants/where-to-buy-native-plants/>.

Gardening plants and vegetables selected to provide food for most of the year.

6. **Project Requirements:**

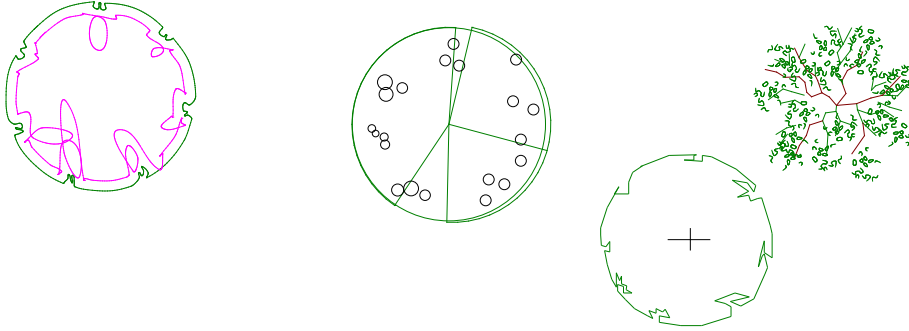
Finished projects may be hand rendered or developed using a CAD or other computer aided program but all projects must meet the following criteria:

- All drawings should be submitted on 18" by 24" paper. Plan view drawing of the finished project is required. Elevation drawings will not be judged. It is strongly suggested that, whenever possible, a **copy** of the original be submitted for judging purposes.
- The finished scale should be 1" equals 10'.
- Students are required to use standard, commonly recognized symbols for plants.
- Symbols used should be representative of common professional drawing practices. Plant symbols should be drawn representing plants in scale at reasonable mature sizes. It is recommended that a reference such as *The Manual of Woody Plants*, Michael Dirr be used in determining plant spread (width).
- Nursery wholesale price books may also contain helpful size information. For example, in the Manual of Woody Plants, *Cornus kousa* is shown at a spread equal to its height of 20 – 30 feet. A reasonable mature size to represent this tree would be 10 to 15 feet or approximately one-half to two-thirds the spread listed. A shrub which grows quickly would be more accurately represented at two-thirds of its mature spread, while a slow growing tree or shrub could be represented at one-half it's mature spread. It is recognized that site conditions will affect the size plants ultimately achieve.

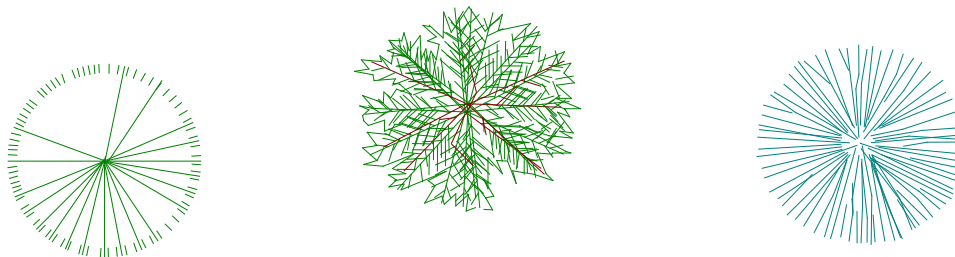
2020 LANDSCAPE DESIGN PROJECT SAMPLES

SAMPLE SYMBOLS ARE SUGGESTED STYLES AND ARE NOT SHOWN TO SCALE

DECIDUOUS



EVERGREEN



2020 LANDSCAPE DESIGN SUPPLEMENTAL INFORMATION

SAMPLE PLANT LIST - SAMPLE PLANT LIST - Plant list must be alphabetized by the first column. Student must locate plant list on the design itself (not as a separate sheet) and the title block should be located in the lower right corner of the drawing page.

KEY	BOTANICAL NAME	COMMON NAME	QUAN	SIZE	ROOTBALL
AR	<i>Acer rubrum</i>	Red Maple	5	2-2.5"	B & B
CF	<i>Cornus florida</i>	Flowering Dogwood	2	8 -10'	B & B

