

The New Jersey
**CONSTRUCTION
REPORTER**

NOVEMBER 2012 DATA

CHRIS CHRISTIE, Governor
STATE OF NEW JERSEY

RICHARD E. CONSTABLE III, Commissioner
DEPARTMENT OF COMMUNITY AFFAIRS

EDWARD M. SMITH, Director
DIVISION OF CODES AND STANDARDS

DISTRIBUTED BY THE

New Jersey Department of
COMMUNITY AFFAIRS
DIVISION OF CODES AND STANDARDS
101 South Broad Street,
PO Box 802
Trenton, NJ 08625-0802
www.nj.gov/dca/divisions/codes/reporter/



THE NEW JERSEY CONSTRUCTION REPORTER

TABLE OF CONTENTS

Contents	Description	Pages
INTRODUCTION		
Highlights	Analysis of data in this month's report	i-vi
Foreword	Background information	1
Exhibits A - C	Definition of terms used throughout the tables	2 - 4
RESIDENTIAL CONSTRUCTION		
Tables 1 - 6	Housing units authorized and certified, housing units demolished, monthly and year-to-date figures	5 - 14
OFFICE SPACE		
Tables 7 - 8	Square feet of office space authorized and certified, monthly and year-to-date figures	15 - 19
RETAIL SPACE		
Tables 9 - 10	Square feet of retail space authorized and certified, monthly and year-to-date figures	20 - 24
DOLLAR AMOUNTS		
Tables 11 - 13	Dollar amount of construction authorized by county and top municipalities, monthly and year to date; dollar amount of construction authorized by use group and permit type, New Jersey totals, monthly and year to date	25 - 30
MUNICIPAL SUMMARY DATA		
	Housing units authorized and certified, office and retail space authorized, and dollar amount of construction authorized by municipality, monthly totals	MSD-1 - MSD-12
ILLUSTRATIONS		
Map 1	Housing units authorized by municipality, year to date	9
Map 2	Office space authorized by municipality, year to date	18
Map 3	Retail space authorized by municipality, year to date	23
Map 4	Estimated cost of construction authorized by municipality, year to date	28

NOVEMBER 2012 CONSTRUCTION HIGHLIGHTS

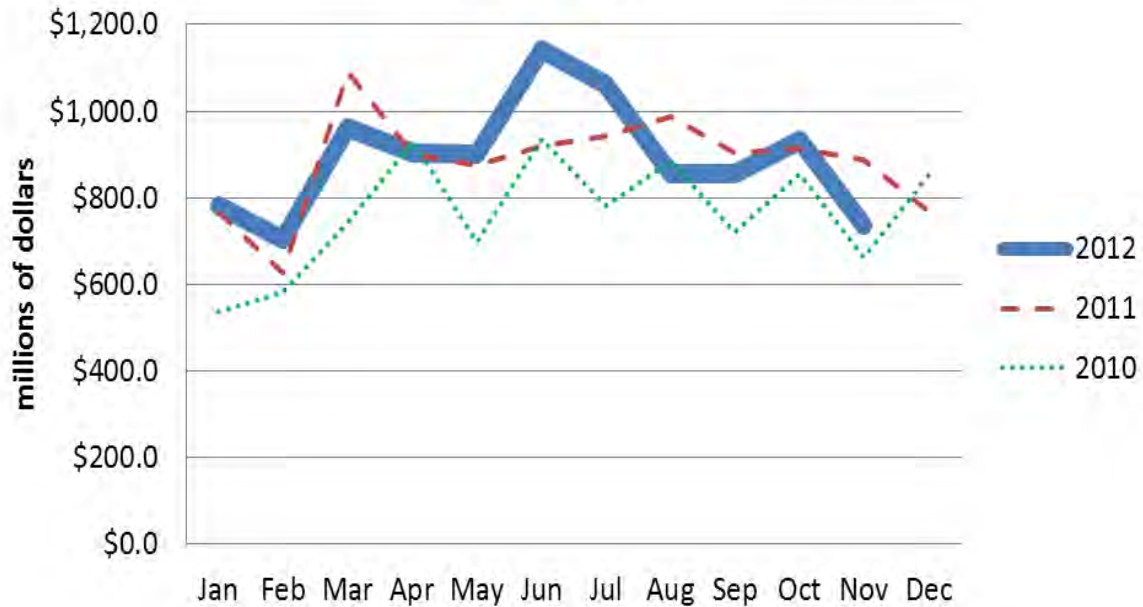
- Hurricane Sandy's effects on New Jersey's construction industry will appear over many months.
- One early impact was a sharp drop in activity the first month after the storm.



Figure 1. Roller coaster at Seaside Heights. Photo by Thomas Pitcherello.

- Construction offices for 559 of New Jersey's 566 municipalities issued nearly 32,000 building permits in November for work on new buildings and additions or alterations to existing ones.
- The estimated cost of this work was \$735.3 million. This was 21.1 percent less than the \$931.5 million last month--one of the sharpest declines in over three years.

Estimated Cost of Work Authorized by Permits, by Month

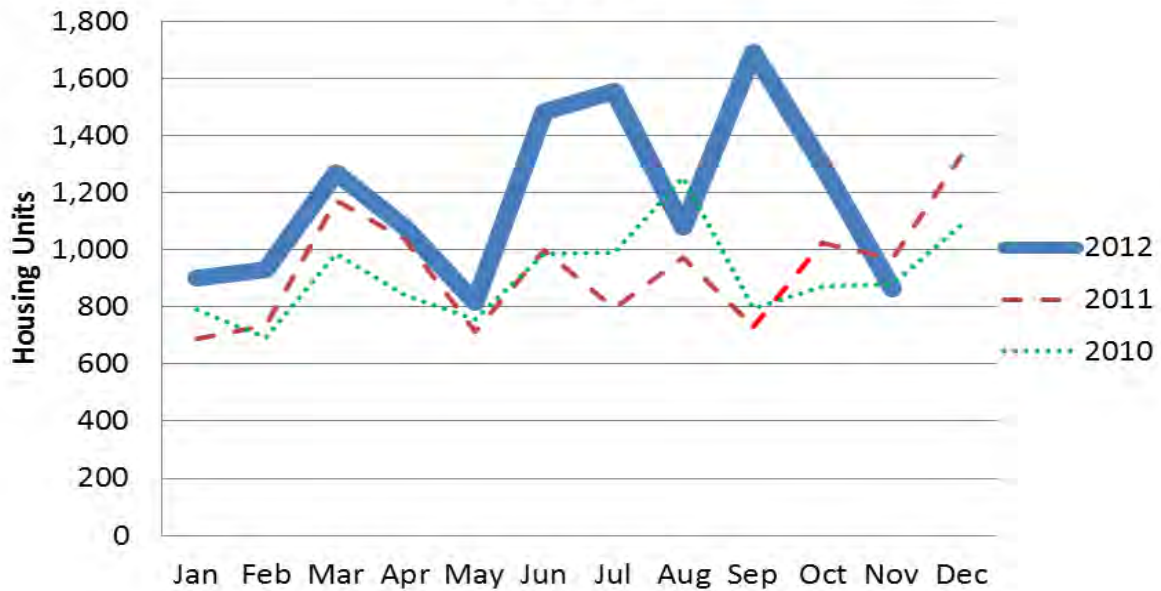


- The number of new homes also dropped sharply compared to last month. Construction officials issued building permits for 864 new dwellings in November. This was 33.4 percent less than the 1,298 reported last month. Only once in the last three years was there a sharper drop in monthly production.

Estimated Cost of Construction Authorized by Permits, New Jersey (\$in millions)

	(\$in millions)			(percentage change)		
	2012	2011	2010	2012	2011	2010
Jan	\$782.4	\$764.9	\$537.6			
Feb	703.3	628.3	582.9	Jan-Feb	-10.1%	8.4%
Mar	961.5	1,090.9	743.9	Feb-Mar	36.7%	27.6%
Apr	903.2	899.3	928.3	Mar-Apr	-6.1%	24.8%
May	899.4	875.5	697.6	Apr-May	-0.4%	-24.9%
Jun	1,142.1	920.6	937.0	May-Jun	27.0%	34.3%
Jul	1,061.7	940.9	780.0	Jun-Jul	-7.0%	-16.8%
Aug	856.4	987.3	883.7	Jul-Aug	-19.3%	13.3%
Sep	854.3	904.7	721.9	Aug-Sep	-0.2%	-18.3%
Oct	931.5	913.5	855.5	Sep-Oct	9.0%	18.5%
Nov	735.3	887.1	662.7	Oct-Nov	-21.1%	-22.5%
Dec		768.8	851.9	Nov-Dec		28.5%

Housing Units Authorized by Permits, by Month



Housing Units Authorized, New Jersey.

				(percentage change)			
	2012	2011	2010	2012	2011	2010	
Jan	901	690	792				
Feb	932	737	694	Jan-Feb	3.4%	6.8%	-12.4%
Mar	1,271	1,172	987	Feb-Mar	36.4%	59.0%	42.2%
Apr	1,079	1,038	842	Mar-Apr	-15.1%	-11.4%	-14.7%
May	817	713	757	Apr-May	-24.3%	-31.3%	-10.1%
Jun	1,484	999	986	May-Jun	81.6%	40.1%	30.3%
Jul	1,553	795	990	Jun-Jul	4.6%	-20.4%	0.4%
Aug	1,081	975	1,252	Jul-Aug	-30.4%	22.6%	26.5%
Sep	1,690	732	795	Aug-Sep	56.3%	-24.9%	-36.5%
Oct	1,298	1,022	872	Sep-Oct	-23.2%	39.6%	9.7%
Nov	864	968	879	Oct-Nov	-33.4%	-5.3%	0.8%
Dec		1,329	1,088	Nov-Dec		37.3%	23.8%

- Jersey City had the most work in November, \$31.8 million. More than half (\$16.1 million) was for a new, 113,000-square foot building for Hudson County Community College.
- The City of Camden's construction office issued building permits authorizing \$31.4 million of activity in November. Nearly all of this was for a mixed-use redevelopment project with office space, day care, and other community services.
- Nearly all the \$20.7 million of work in Glassboro (Gloucester County) was from new development for Rowan University.

Year to Date

- Despite the sharp downturn in November, major construction indicators for 2012 are at or significantly higher than last year.
- The dollar amount of work between January and November 2012 was \$10.2 billion. This is about the same as last year at this time.
- New home construction is considerably higher. 13,840 new houses were authorized through November. This already exceeds last year's level by almost 2,000 units and only includes 11 months of activity.

Major Construction Indicators, New Jersey November Year-to-Date Figures Compared to Annual Totals				
Period	Estimated Cost of Construction	Authorized Housing Units	Authorized Office Space (square feet)	Authorized Retail Space (square feet)
Year-to-Date Figures (January to November)				
Jan – Nov 2012	\$10,205,168,924	13,840	7,079,410	1,990,548
Jan – Nov 2011	10,106,753,797	10,474	4,675,559	1,520,205
Jan – Nov 2010	8,788,149,016	10,452	4,738,903	2,035,195
Jan – Nov 2009	8,768,876,384	9,685	3,673,085	2,186,908
Jan – Nov 2008	13,041,696,998	15,233	7,552,009	5,289,369
Jan – Nov 2007	13,906,929,474	24,001	8,069,087	4,531,899
Annual Figures				
2011	\$10,939,809,749	11,882	4,915,544	1,680,445
2010	9,768,642,343	11,885	5,496,579	2,192,231
2009	9,517,725,396	11,145	4,253,888	2,248,935
2008	13,944,534,578	16,338	7,962,998	5,557,101
2007	15,356,572,820	25,948	9,569,501	5,423,889
<i>Difference between January–November 2011 & January–November 2012</i>				
2011 – 2012 (year to date)	\$98,415,127	3,366	2,403,851	470,343
Percent Change	1.0%	32.1%	51.4%	30.9%
Source: N.J. Department of Community Affairs, 1/18/13				

- Just over 7 million square feet of new office space was authorized between January and November. This is more than 2 million square feet more than last year, a 51.4 percent increase. New retail space also increased, but at a more modest rate (30.9 percent).
- Jersey City had the most work between January and November, \$368.9 million. New housing accounted for much of this. Jersey City's construction office issued building permits for 607 new dwellings through November. Only Fort Lee in Bergen County had more, (788 units).
- Newark had \$272.4 million through November, ranking second among municipalities. Newark had 266 authorized dwellings through November. Only ten other localities had more. Some of the bigger projects underway in 2012

were from major expansions on the Newark campus of Rutgers University and the New Jersey Institute of Technology. One of the other bigger developments was for a new office building for Panasonic electronics.

- Hanover Township (Morris County) ranks third with \$146.4 million of construction between January and November 2012. More than \$100 million of this total was for alterations of the former Bell Laboratories office complex. The new facilities will serve as the eastern headquarters of Bayer Pharmaceuticals.
- A total of \$307.8 million was authorized for “State Buildings.” These building permits are issued to New Jersey State government agencies or special-purpose agencies. Much of this is improvements by public colleges and universities. Some of the bigger developments were on the main campus of Rutgers University, Kean University, and Rowan University.

THE NEW JERSEY CONSTRUCTION REPORTER contains statistics on construction activity in New Jersey. Information in the report comes from construction officials who administer the State Uniform Construction Code (UCC) (N.J.A.C. 5:23-1 et seq.) in New Jersey's 566 municipalities.

Each month, construction officials send to the New Jersey Department of Community Affairs (DCA) reports on the permits and certificates they issue. Permits authorize the start of construction and cover four types of activity: (1) New construction permits authorize the start of a new structure. (2) Permits for additions refer to work that will add space (volume and square feet) to an existing building. (3) Alterations also involve existing structures, but the work authorized will not add space. Typically, construction officials issue permits for alterations when the work is subject to one or more of the UCC's major subcodes (building, electrical, plumbing, fire protection). (4) Demolition permits authorize the removal of a building or some other structure. The *CONSTRUCTION REPORTER* identifies only those demolitions that will result in the loss of housing.

In addition to permits, the *CONSTRUCTION REPORTER* has information on the certificates issued by construction officials. While permits authorize the start of construction, certificates are issued for work completed and ready for occupancy. Each month, the *CONSTRUCTION REPORTER* will report on the number of housing units and the amount of office and retail space authorized for construction, along with the number of housing units and the amount of office and retail space completed.

Data Comparability

The *CONSTRUCTION REPORTER* contains information on authorized housing units that is tabulated two different ways. The DCA tabulates Tables 1 through 3 and Tables 8 through 13 based on the use of buildings, defined in "groups" by New Jersey's UCC. Exhibit B on page 3 summarizes these groups.

Tables 4, 5, and 6 show authorized housing units as defined and tabulated by the United States Census Bureau. The New Jersey Department of Labor and Workforce Development prepares these tables for publication in the *CONSTRUCTION REPORTER*. Exhibit C on page 4 describes the housing definitions used by the Census Bureau.

The DCA series and the Census Bureau series on authorized housing units differ two important ways. First, the DCA series includes housing units created as a result of permits issued to alter or make additions to existing structures. The Census Bureau counts only those housing units authorized from permits issued for new construction.

Second, the Census Bureau imputes data for localities that fail to submit monthly reports on time. An asterisk in the Census column of data appearing in the Municipal Summary Data table at the back of the *CONSTRUCTION REPORTER* indicates those towns with imputed data. The Census Bureau bases these imputations on historic trends. The DCA series shows information for only those towns that submitted monthly reports. If a municipality failed to submit a monthly report on time, "No report" appears in the appropriate columns in the Municipal Summary Data table.

Additional Terms

A number of other terms appear in the tables throughout the *CONSTRUCTION REPORTER*. Exhibit A on page 2 defines additional construction permit and certificate terms.

Exhibit A

Summary of Building Permit and Certificate Terms	
Addition	Permit type issued for construction work that adds space (volume and square feet) to an existing structure.
Alteration	Permit type involving one or more subcodes (building, electrical, fire protection, and plumbing). The work is authorized for an existing structure and does not add new space.
Certificate	A document issued by a construction official indicating completion of work for which a permit was issued.
Dollar Amount of Construction	Estimated cost of work, as reported by the permit applicant to the construction official.
Demolition	Permit type authorizing the demolition of an existing structure.
Housing Units Certified	A rental or for-sale unit completed and certified by the construction official for conforming to the standards in the New Jersey UCC.
Housing Units Authorized by Building Permits	A rental or for-sale dwelling unit authorized by a construction permit. See Exhibits B and C for explanations of the different definitions of housing structures. The Table 1 series and Tables 2 and 3 show housing units as classified by the residential use groups defined in Exhibit B. Tables 4, 5, and 6 identify authorized housing as defined by the U.S. Census Bureau. (See Exhibit C.)
Housing Unit Demolitions	Rental or for-sale housing to be demolished, as reported to the construction official by permit applicants.
New Construction	Permit type authorizing the start of a new structure.
Permit	A document issued by construction officials that authorizes the construction of a new structure or an addition, alteration, or demolition of an existing structure.
Square Feet	Estimated building area, as reported on permits for new construction and additions.
State Buildings	Buildings or structures constructed or owned by the State or any of its instrumentalities. Construction activity reported in this category includes State offices, colleges, hospitals, prisons, facilities operated by New Jersey Transit and the New Jersey Sports and Exposition Authority, and other State authorities.

Exhibit B

Building Groups	
Residential	Buildings where members of households live. Examples of residential groups include: one- and two-family houses (R-3 and R-5); apartments, dormitories, other multifamily houses (R-2); and mixed-use housing, where the house is a relatively smaller part of a building that has another use (e.g., an apartment over a store). Therapeutic residences (R-4) for 6 to 16 occupants are also included in this category. The Table 1 series and Tables 2 and 3 show authorized housing units by group definition.
----- The following groups refer to industrial, commercial, and other nonresidential structures. -----	
Assembly	Structures where people gather for civic, social, or religious purposes. Examples include: theaters and concert halls (group A-1); night clubs, dance halls, casino gaming areas, restaurants, taverns, and bars (A-2); churches, libraries, amusement arcades, community halls, gymnasiums, indoor swimming pools, art galleries, and museums (A-3); arenas, skating rinks, swimming pools, tennis courts (A-4); and grandstands, bleachers stadiums, and amusement park structures (A-5).
Business	Office buildings (group B) for business transactions of all kinds including banks, corporate offices, professional offices, government buildings, beauty shops, motor vehicle showrooms, and out-patient clinics.
Educational	Buildings for educational purposes through the 12th grade (group E).
High Hazard	Buildings used to manufacture, process, or store materials that constitute a high fire, explosion, or health hazard (group H).
Hotels, Motels, Guest Houses	Buildings for shelter and sleeping where the primary occupants use the facility on a temporary basis, staying less than 30 days (group R-1).
Industrial	Factory buildings where the occupants make, process, or assemble products that are not highly combustible, flammable, or explosive. Includes automotive, appliance, and furniture manufacturers; electric power plants; food processing plants; foundries; and water pumping, solid waste disposal, and incineration plants (group F).
Institutional	Buildings for people who suffer from physical limitations because of age or health; buildings for people detained for penal or correction purposes. Includes: supervised residential homes for six or more people (group I-1); medical and nursing-care facilities (I-2); jails, reformatories, and asylums (I-3); and day care for six or more occupants (I-4).
Mercantile	Buildings for display and sale purposes. Includes retail stores, automotive service stations, drug stores, shops, salesrooms, and markets (group M).
Storage	Buildings used to store goods that are not highly combustible or explosive. Includes warehouses, open parking garages, lumberyards, livestock shelters, and mausoleums (group S).
Signs, Fences, Miscellaneous	Accessory buildings and miscellaneous structures including fences over six feet in height, signs, private garages, sheds, agricultural buildings, carports, retaining walls, tanks, and swimming pools (group U).

Exhibit C

Residential Structures (U.S. Census Bureau Definitions)

Tables 4, 5, and 6 show authorized housing units based on the structure types defined below by the U.S. Census Bureau. The number of units shown in these tables refers to those authorized by building permits issued for new construction only.

Single-Family Houses

Include all detached one-family houses and all attached one-family houses separated by a wall that extends from ground to roof with no common heating system or inter-structural public utilities. Include prefabricated, sectionalized, panelized, and modular homes that are manufactured partially off site, but are transported and assembled at the construction site.

Two-Family Buildings

Include all buildings with two housing units that may be above one another or side by side. If built side by side, the structures (1) do not have a wall that extends from ground to roof; or (2) share a heating system; or (3) have inter-structural public utilities, such as water supply and sewage disposal.

Three- and Four-Family Buildings

Include all buildings with three or four housing units. If built side by side, the structures (1) do not have a wall that extends from ground to roof; or (2) share a heating system; or (3) have inter-structural public utilities, such as water supply and sewage disposal.

Five-or-More-Family Buildings

Include all buildings with five or more housing units. If built side by side, the structures (1) do not have a wall that extends from ground to roof; or (2) share a heating system; or (3) have inter-structural public utilities, such as water supply and sewage disposal.

Private Housing Units

Housing owned by a private company or individual during the period of construction. This includes all housing built by nonprofit organizations and "turnkey" housing; for example, housing that will be sold to a local public housing authority when completed.

Public Housing Units

Housing owned by a governmental body during the period of construction.

Table 1a HOUSE 1/18/13

Housing Units Authorized by Building Permits: New Jersey Counties, November 2012								
County	November				Year to Date			
	Total	1 & 2 Family	Multifamily	Mixed Use	Total	1 & 2 Family	Multifamily	Mixed Use
ATLANTIC	24	24	0	0	378	363	12	4
BERGEN	46	20	25	1	1,681	381	1,296	4
BURLINGTON	51	50	0	1	450	337	111	2
CAMDEN	7	7	0	0	528	125	403	0
CAPE MAY	71	56	15	0	457	428	27	2
CUMBERLAND	16	15	0	1	124	118	5	1
ESSEX	16	16	0	0	773	191	582	0
GLOUCESTER	35	35	0	0	436	436	0	0
HUDSON	204	18	184	2	2,577	85	2,490	2
HUNTERDON	12	5	7	0	83	50	32	1
MERCER	18	6	12	0	437	124	311	2
MIDDLESEX	51	51	0	0	968	617	347	4
MONMOUTH	46	46	0	0	928	600	321	7
MORRIS	45	44	1	0	570	369	195	6
OCEAN	80	66	13	1	1,405	1,084	320	1
PASSAIC	13	13	0	0	277	81	195	1
SALEM	0	0	0	0	49	49	0	0
SOMERSET	107	34	73	0	938	335	603	0
SUSSEX	1	0	0	1	80	60	18	2
UNION	16	15	1	0	651	240	411	0
WARREN	5	5	0	0	50	48	2	0
STATE BUILDINGS*	0	0	0	0	0	0	0	0
NEW JERSEY	864	526	331	7	13,840	6,121	7,681	39
NJ 2011 1/9/12	968	560	361	47	10,474	5,597	4,420	457

The definition of housing units in the Table 1 series and Table 2 do not match those in Tables 4, 5, and 6. See "Data Comparability" section on page 1, and Exhibits B and C on pages 3 and 4 for details.

*State buildings refer to structures owned or constructed by the State or any of its instrumentalities. See Exhibit A, Summary of Building Permit and Certificate Terms, on page 2.

Table 1b HSEMUN1 1/18/13

Housing Units Authorized by Building Permits: Top Municipalities, November 2012						
Rank	Municipality	County	Total	1 & 2 Family	Multifamily	Mixed Use
1	Harrison Town	Hudson	143	2	141	0
2	Raritan Borough	Somerset	73	0	73	0
3	West New York Town	Hudson	43	0	43	0
4	Sea Isle City	Cape May	30	15	15	0
5	Hillsborough Township	Somerset	21	21	0	0
6	Barneгат Township	Ocean	19	6	13	0
7	Cinnaminson Township	Burlington	18	18	0	0
8	Ocean City	Cape May	17	17	0	0
9	Shrewsbury Borough	Monmouth	17	17	0	0
10	Morris Plains Borough	Morris	16	16	0	0
11	Monroe Township	Middlesex	15	15	0	0
12	Burlington Township	Burlington	14	14	0	0
13	Vineland City	Cumberland	13	12	0	1
14	Lakewood Township	Ocean	13	13	0	0
15	Garfield City	Bergen	12	0	12	0
16	Montvale Borough	Bergen	12	0	12	0
17	Hopewell Township	Mercer	12	0	12	0
18	Avalon Borough	Cape May	11	11	0	0
19	Glassboro Borough	Gloucester	10	10	0	0
20	South Brunswick Township	Middlesex	10	10	0	0
	TOP MUNICIPALITIES		376	195	180	1
	NEW JERSEY		864	526	331	7
	TOP AS % OF STATE		43.5%	37.1%	54.4%	N/A

The definition of housing units in the Table 1 series and Table 2 do not match those in Tables 4, 5, and 6. See "Data Comparability" section on page 1, and Exhibits B and C on pages 3 and 4 for details.

Table 1c HSEMUN2 1/18/13

Housing Units Authorized by Building Permits: Top Municipalities, January through November 2012						
Rank	Municipality	County	Total	1 & 2 Family	Multifamily	Mixed Use
1	Fort Lee Borough	Bergen	788	20	768	0
2	Jersey City	Hudson	607	33	574	0
3	Franklin Township	Somerset	499	133	366	0
4	Harrison Town	Hudson	483	16	467	0
5	Cherry Hill Township	Camden	366	14	352	0
6	West New York Town	Hudson	364	2	362	0
7	Lakewood Township	Ocean	360	346	14	0
8	Weehawken Township	Hudson	356	1	355	0
9	Cliffside Park Borough	Bergen	307	7	300	0
10	Secaucus Town	Hudson	275	5	270	0
11	Newark City	Essex	266	25	241	0
12	Monroe Township	Middlesex	257	237	20	0
13	Howell Township	Monmouth	257	87	170	0
14	Hoboken City	Hudson	234	9	225	0
15	Raritan Borough	Somerset	231	2	229	0
16	Barnegat Township	Ocean	201	57	144	0
17	Piscataway Township	Middlesex	198	104	94	0
18	Rahway City	Union	173	2	171	0
19	Bayonne City	Hudson	160	12	148	0
20	Woodbridge Township	Middlesex	150	30	120	0
	TOP MUNICIPALITIES		6,532	1,142	5,390	0
	NEW JERSEY		13,840	6,121	7,681	39
	TOP AS % OF STATE		47.2%	18.7%	70.2%	0.0%

The definition of housing units in the Table 1 series and Table 2 do not match those in Tables 4, 5, and 6. See "Data Comparability" section on page 1, and Exhibits B and C on pages 3 and 4 for details.

Table 1d NEWHSE 1/18/13

Housing Units Authorized by New Construction Building Permits: New Jersey Counties, November 2012								
County	November				Year to Date			
	Total	1 & 2 Family	Multifamily	Mixed Use	Total	1 & 2 Family	Multifamily	Mixed Use
ATLANTIC	24	24	0	0	372	358	12	2
BERGEN	46	20	25	1	1,553	375	1,176	2
BURLINGTON	51	50	0	1	443	331	111	1
CAMDEN	7	7	0	0	522	119	403	0
CAPE MAY	68	53	15	0	442	414	27	1
CUMBERLAND	14	14	0	0	108	107	1	0
ESSEX	16	16	0	0	770	188	582	0
GLOUCESTER	35	35	0	0	435	435	0	0
HUDSON	204	18	184	2	2,554	83	2,469	2
HUNTERDON	12	5	7	0	82	49	32	1
MERCER	18	6	12	0	435	124	311	0
MIDDLESEX	51	51	0	0	961	614	347	0
MONMOUTH	46	46	0	0	858	594	257	7
MORRIS	43	42	1	0	567	366	195	6
OCEAN	79	65	13	1	1,385	1,064	320	1
PASSAIC	13	13	0	0	276	80	195	1
SALEM	0	0	0	0	48	48	0	0
SOMERSET	107	34	73	0	936	333	603	0
SUSSEX	1	0	0	1	79	59	18	2
UNION	15	14	1	0	638	232	406	0
WARREN	5	5	0	0	50	48	2	0
STATE BUILDINGS*	0	0	0	0	0	0	0	0
NEW JERSEY	855	518	331	6	13,514	6,021	7,467	26
NJ 2011 1/9/12	958	550	361	47	10,262	5,519	4,296	447

The definition of housing units in the Table 1 series and Table 2 do not match those in Tables 4, 5, and 6. See "Data Comparability" section on page 1, and Exhibits B and C on pages 3 and 4 for details.

*State buildings refer to structures owned or constructed by the State or any of its instrumentalities. See Exhibit A, Summary of Building Permit and Certificate Terms, on page 2.

Housing Units Authorized by Building Permits January-November 2012

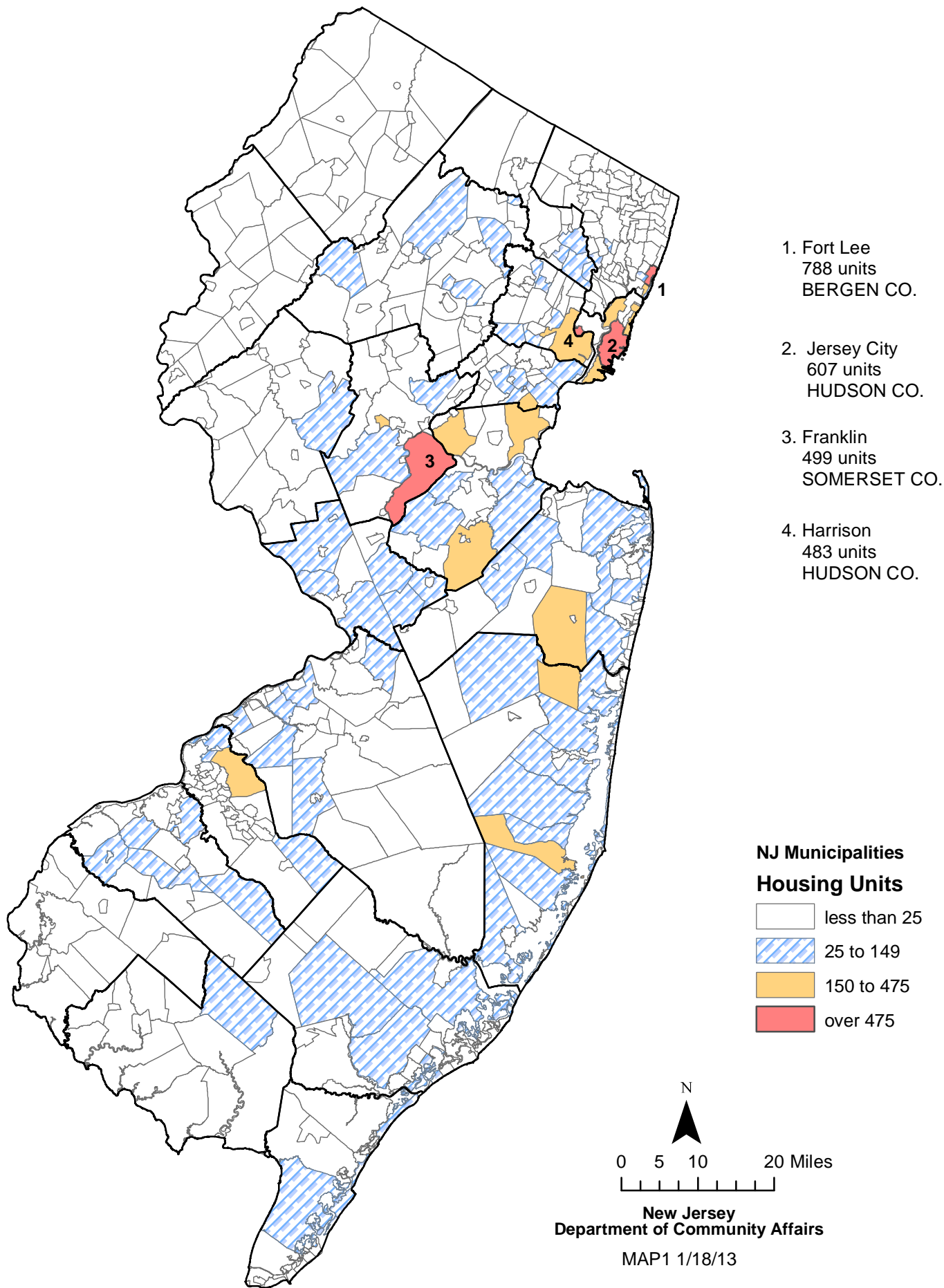


Table 2 CERTS 1/18/13

Housing Units Certified: New Jersey Counties, November 2012								
County	November				Year to Date			
	Total	1 & 2 Family	Multi-family	Mixed Use	Total	1 & 2 Family	Multi-family	Mixed Use
ATLANTIC	23	23	0	0	514	327	182	5
BERGEN	44	28	16	0	823	369	448	6
BURLINGTON	81	29	51	1	436	316	119	1
CAMDEN	38	14	24	0	509	162	347	0
CAPE MAY	25	25	0	0	450	423	26	1
CUMBERLAND	10	10	0	0	119	116	1	2
ESSEX	54	5	49	0	509	136	373	0
GLOUCESTER	39	39	0	0	494	465	25	4
HUDSON	77	2	75	0	1,018	52	966	0
HUNTERDON	3	3	0	0	94	55	39	0
MERCER	8	8	0	0	268	96	172	0
MIDDLESEX	117	67	50	0	1,006	575	430	1
MONMOUTH	55	27	28	0	698	514	182	2
MORRIS	29	24	5	0	370	243	127	0
OCEAN	146	67	78	1	1,361	1,003	354	4
PASSAIC	4	3	1	0	237	58	178	1
SALEM	4	4	0	0	53	51	0	2
SOMERSET	73	35	38	0	502	254	247	1
SUSSEX	8	8	0	0	71	71	0	0
UNION	22	13	9	0	503	197	305	1
WARREN	7	7	0	0	87	83	4	0
STATE BUILDINGS*	0	0	0	0	0	0	0	0
NEW JERSEY	867	441	424	2	10,122	5,566	4,525	31
NJ 2011 1/9/12	673	490	181	2	8,995	5,510	3,443	42

The definition of housing units in the Table 1 series and Table 2 do not match those in Tables 4, 5, and 6. See "Data Comparability" section on page 1, and Exhibits B and C on pages 3 and 4 for details.

*State buildings refer to structures owned or constructed by the State or any of its instrumentalities. See Exhibit A, Summary of Building Permit and Certificate Terms, on page 2.

Table 3 DEMOS 1/18/13

Housing Units Demolished: New Jersey Counties, November 2012								
County	November				Year to Date			
	Total	1 & 2 Family	Multifamily	Mixed Use	Total	1 & 2 Family	Multifamily	Mixed Use
ATLANTIC	12	12	0	0	160	157	0	3
BERGEN	18	17	1	0	273	255	9	9
BURLINGTON	6	6	0	0	83	80	1	2
CAMDEN	12	11	1	0	194	191	3	0
CAPE MAY	31	31	0	0	265	261	4	0
CUMBERLAND	10	10	0	0	43	43	0	0
ESSEX	29	26	3	0	114	99	14	1
GLOUCESTER	7	7	0	0	45	43	1	1
HUDSON	4	4	0	0	137	63	74	0
HUNTERDON	3	3	0	0	28	27	0	1
MERCER	12	6	6	0	150	74	76	0
MIDDLESEX	5	5	0	0	128	79	45	4
MONMOUTH	13	12	0	1	416	253	144	19
MORRIS	13	13	0	0	137	133	2	2
OCEAN	17	15	0	2	350	342	1	7
PASSAIC	3	3	0	0	109	72	30	7
SALEM	3	3	0	0	23	23	0	0
SOMERSET	2	2	0	0	53	53	0	0
SUSSEX	0	0	0	0	25	24	0	1
UNION	7	7	0	0	180	92	84	4
WARREN	1	1	0	0	16	15	0	1
STATE BUILDINGS*	0	0	0	0	0	0	0	0
NEW JERSEY	208	194	11	3	2,929	2,379	488	62
NJ 2011 1/9/12	295	263	29	3	2,753	2,351	339	63

*State buildings refer to structures owned or constructed by the State or any of its instrumentalities. See Exhibit A, Summary of Building Permit and Certificate Terms, on page 2.

Table 4

Residential Construction Authorized by Building Permits (Census Definitions) New Jersey, November 2012						
Type of Construction	October 2012	November 2012	Year to Date*			
			2011	2012	Change	
					Number	Percent
Total Private Units Authorized	1,576	1,160	12,973	16,249	3,276	25.3
Single Family	793	546	6,565	6,638	73	1.1
Two Family	42	46	452	512	60	13.3
Three or Four Family	34	18	178	358	180	101.1
Five or More Family	707	550	5,778	8,741	2,963	51.3
CENSUS1 7/20/01						

*Year-to-date totals include data received too late for monthly tabulation. The Census Bureau allocates revisions to prior months and therefore monthly year-to-date totals reflect these changes.

Authorized dwelling units in the Table 1 series and Table 2 do not match those in Tables 4, 5, and 6 due to definitional differences. See "Data Comparability" section on page 1, and Exhibits B and C on pages 3 and 4 for details.

Source: U.S. Census Bureau, Manufacturing and Construction Division
Prepared by: N.J. Department of Labor and Workforce Development, December, 2012

Table 5

Residential Construction Authorized by Building Permits (Census Definitions) New Jersey, 1991 to Present						
Year and Month	Number of Municipalities	Total	Single Family	Two Family	3 or 4 Family	5 or More Family
1991	567	14,856	12,869	402	101	1,484
1992	567	19,072	16,506	510	74	1,982
1993	567	25,188	21,340	758	129	2,961
1994	567	25,388	22,437	722	121	2,108
1995	567	21,521	18,341	670	158	2,352
1996	567	24,173	20,853	880	211	2,229
1997	566	28,018	23,472	916	324	3,306
1998	566	31,345	25,459	1,172	221	4,493
1999	566	31,976	25,129	1,468	290	5,089
2000	566	34,585	25,260	1,844	305	7,176
2001	566	28,267	21,503	1,827	779	4,158
2002	566	30,441	22,379	2,110	742	5,210
2003	566	32,984	22,163	2,870	912	7,039
2004	566	35,936	22,429	3,300	1,476	8,731
2005	566	38,588	22,264	3,212	1,437	11,675
2006	566	34,323	17,113	3,088	1,708	12,414
2007	566	25,389	13,066	1,692	1,311	9,320
2008	566	18,363	9,169	664	411	8,119
2009	566	12,421	7,211	400	206	4,604
2010	566	13,540	7,383	680	276	5,201
2011	566	13,079	6,509	438	178	5,954
2012						
January [‡]	566	918	413	38	3	464
February [‡]	566	1,171	468	32	75	596
March [‡]	566	1,266	589	42	15	620
April [‡]	566	1,573	688	62	26	797
May [‡]	566	1,190	650	34	12	494
June [‡]	566	1,992	659	40	12	1,281
July [‡]	566	1,908	634	98	27	1,149
August [‡]	566	1,390	640	36	118	596
September [‡]	566	2,105	558	42	18	1,487
October [‡]	566	1,576	793	42	34	707
November	566	1,160	546	46	18	550
<u>Year to Date*</u>						
November 2011	---	12,973	6,565	452	178	5,778
November 2012	---	16,249	6,638	512	358	8,741

[‡]Revised – Monthly data are revised to reflect changes in the year-to-date total.

*Year-to-date totals include data received too late for monthly tabulation. The Census Bureau allocates revisions to prior months and therefore monthly year-to-date totals reflect these changes.

Authorized dwelling units in the Table 1 series and Table 2 do not match those in Tables 4, 5, and 6 due to definitional differences.

See "Data Comparability" section on page 1, and Exhibits B and C on pages 3 and 4 for details.

Source: U.S. Census Bureau, Manufacturing and Construction Division

Prepared by: N.J. Department of Labor and Workforce Development, December, 2012

Table 6

Residential Construction Authorized by Building Permits (Census Definitions) New Jersey Counties, 2012						
County	November					Total Year to Date* 2012
	Total	Single Family	Two Family	3 or 4 Family	5 or More Family	
ATLANTIC	35	28	2	0	5	397
BERGEN	132	47	12	0	73	2,030
BURLINGTON	51	35	0	0	16	622
CAMDEN	34	15	0	0	19	840
CAPE MAY	67	30	14	4	19	431
CUMBERLAND	14	14	0	0	0	173
ESSEX	49	17	4	4	24	1,195
GLOUCESTER	28	28	0	0	0	488
HUDSON	230	4	8	4	214	2,589
HUNTERDON	18	13	0	0	5	171
MERCER	11	8	0	3	0	389
MIDDLESEX	72	57	0	0	15	1,155
MONMOUTH	71	42	0	0	29	983
MORRIS	41	36	0	0	5	813
OCEAN	70	63	2	0	5	1,048
PASSAIC	28	18	0	0	10	459
SALEM	1	1	0	0	0	53
SOMERSET	122	39	0	0	83	1,129
SUSSEX	16	11	0	0	5	206
UNION	52	22	4	3	23	890
WARREN	18	18	0	0	0	188
NEW JERSEY	1,160	546	46	18	550	16,249

CENSUS3 7/20/01

*Year-to-date totals include data received too late for monthly tabulation. See Table 5 for revised statewide data for prior months.

Authorized dwelling units in the Table 1 series and Table 2 do not match those in Tables 4, 5, and 6 due to definitional differences. See "Data Comparability" section on page 1, and Exhibits B and C on pages 3 and 4 for details.

Source: U.S. Census Bureau, Manufacturing and Construction Division
Prepared by: N.J. Department of Labor and Workforce Development, December, 2012

Table 7a OFFCSPC 1/18/13

Office Square Feet Authorized by Building Permits: New Jersey Counties, November 2012						
County	November			Year to Date		
	Total	New Construction	Additions	Total	New Construction	Additions
ATLANTIC	0	0	0	77,859	62,109	15,750
BERGEN	25,896	15,801	10,095	460,202	316,900	143,302
BURLINGTON	0	0	0	323,131	313,803	9,328
CAMDEN	0	0	0	166,801	126,706	40,095
CAPE MAY	30,407	30,407	0	75,947	72,373	3,574
CUMBERLAND	500	0	500	14,882	8,695	6,187
ESSEX	8,323	7,730	593	416,887	391,086	25,801
GLOUCESTER	33,308	0	33,308	80,957	35,813	45,144
HUDSON	3,501	3,501	0	333,452	333,452	0
HUNTERDON	0	0	0	49,668	26,549	23,119
MERCER	33,017	33,017	0	441,967	441,672	295
MIDDLESEX	14,541	13,218	1,323	2,328,877	2,132,903	195,974
MONMOUTH	54,252	52,196	2,056	221,044	149,653	71,391
MORRIS	49,173	11,222	37,951	598,039	279,828	318,211
OCEAN	20,000	20,000	0	384,151	322,419	61,732
PASSAIC	9,229	429	8,800	350,559	295,144	55,415
SALEM	0	0	0	5,980	5,260	720
SOMERSET	4,335	4,335	0	205,831	103,265	102,566
SUSSEX	7,100	7,100	0	26,057	25,481	576
UNION	31,064	28,860	2,204	357,292	77,637	279,655
WARREN	0	0	0	14,674	5,705	8,969
STATE BUILDINGS*	0	0	0	145,153	145,153	0
NEW JERSEY	324,646	227,816	96,830	7,079,410	5,671,606	1,407,804
NJ 2011 1/9/12	220,001	131,993	88,008	4,675,599	3,933,297	742,302

*State buildings refer to structures owned or constructed by the State or any of its instrumentalities. See Exhibit A, Summary of Building Permit and Certificate Terms, on page 2.

Table 7b OFFCMUN1 1/18/13

Office Square Feet Authorized by Building Permits: New Jersey Top Municipalities, November 2012					
Rank	Municipality	County	Total	New Construction	Additions
1	Woodbury City	Gloucester	31,208	0	31,208
2	Robbinsville Township	Mercer	30,364	30,364	0
3	Hazlet Township	Monmouth	29,284	29,284	0
4	Cranford Township	Union	28,860	28,860	0
5	Parsippany-Troy Hills Twp	Morris	28,232	0	28,232
6	Freehold Township	Monmouth	22,912	22,912	0
7	Toms River Township	Ocean	20,000	20,000	0
8	Sea Isle City	Cape May	17,671	17,671	0
9	Englewood Cliffs Borough	Bergen	14,250	14,250	0
10	Middle Township	Cape May	12,736	12,736	0
11	Rockaway Township	Morris	11,222	11,222	0
12	East Brunswick Township	Middlesex	11,160	11,160	0
13	Morris Township	Morris	9,719	0	9,719
14	Clifton City	Passaic	8,800	0	8,800
15	Bloomfield Township	Essex	7,290	7,290	0
16	Vernon Township	Sussex	7,100	7,100	0
17	Elmwood Park Borough	Bergen	5,323	0	5,323
18	Somerville Borough	Somerset	4,335	4,335	0
19	Guttenberg Town	Hudson	3,501	3,501	0
20	Lodi Borough	Bergen	3,032	0	3,032
TOP MUNICIPALITIES			306,999	220,685	86,314
NEW JERSEY			324,646	227,816	96,830
TOP AS % OF STATE			94.6%	96.9%	89.1%

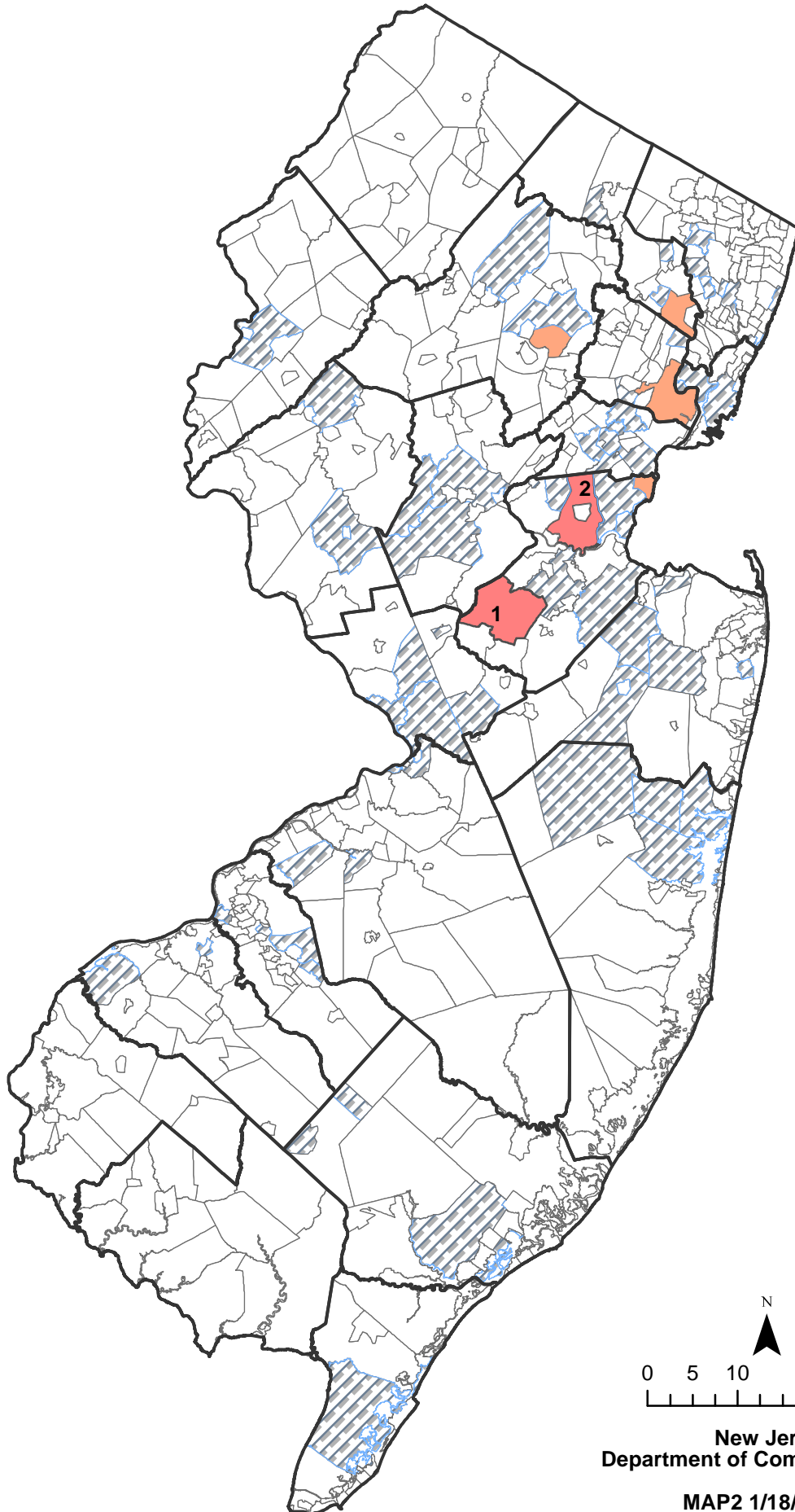
Table 7c OFFCMUN2 1/18/13

Office Square Feet Authorized by Building Permits: New Jersey Top Municipalities, January-November 2012					
Rank	Municipality	County	Total	New Construction	Additions
1	South Brunswick Township	Middlesex	963,329	864,486	98,843
2	Edison Township	Middlesex	815,497	815,497	0
3	Newark City	Essex	367,679	366,149	1,530
4	Clifton City	Passaic	283,084	233,028	50,056
5	Hanover Township	Morris	271,258	23,593	247,665
6	Carteret Borough	Middlesex	251,354	232,134	19,220
7	Parsippany-Troy Hills Twp	Morris	249,252	219,621	29,631
8	Moorestown Township	Burlington	199,200	199,200	0
9	Edgewater Borough	Bergen	196,116	194,946	1,170
10	Jersey City	Hudson	159,050	159,050	0
11	Lawrence Township	Mercer	154,979	154,979	0
12	Jackson Township	Ocean	149,446	149,446	0
13	Kenilworth Borough	Union	142,169	0	142,169
14	Branchburg Township	Somerset	137,687	38,919	98,768
15	Princeton Borough	Mercer	126,622	126,622	0
16	Linden City	Union	118,659	24,000	94,659
17	Kearny Town	Hudson	114,034	114,034	0
18	Hamilton Township	Mercer	103,360	103,360	0
19	Toms River Township	Ocean	102,385	91,889	10,496
20	Voorhees Township	Camden	88,736	87,864	872
TOP MUNICIPALITIES			4,993,896	4,198,817	795,079
NEW JERSEY			7,079,410	5,671,606	1,407,804
TOP AS % OF STATE			70.5%	74.0%	56.5%

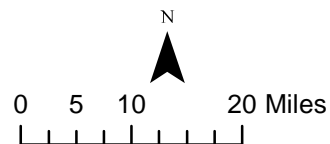
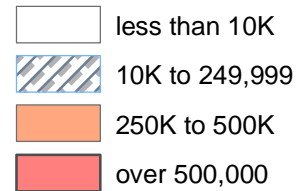
Office Square Feet Authorized by Building Permits January-November 2012

1. South Brunswick
963,329 sq. ft.
MIDDLESEX CO.

2. Edison
815,497 sq. ft.
MIDDLESEX, CO.



NJ Municipalities Office Square Feet



New Jersey
Department of Community Affairs

MAP2 1/18/13

Table 8 CERTOFF 1/18/13

Office Square Feet Certified: New Jersey Counties, November 2012						
County	November			Year to Date		
	Total	New Construction	Additions	Total	New Construction	Additions
ATLANTIC	0	0	0	55,992	52,777	3,215
BERGEN	3,294	2,044	1,250	272,214	167,680	104,534
BURLINGTON	0	0	0	142,824	123,832	18,992
CAMDEN	11,693	0	11,693	33,945	18,070	15,875
CAPE MAY	19,695	19,635	60	32,952	32,891	61
CUMBERLAND	2,592	2,592	0	39,784	33,785	5,999
ESSEX	8,388	0	8,388	88,561	27,448	61,113
GLOUCESTER	1,048	960	88	79,590	26,743	52,847
HUDSON	0	0	0	25,356	25,355	1
HUNTERDON	0	0	0	97,018	95,116	1,902
MERCER	3,800	3,800	0	52,786	38,504	14,282
MIDDLESEX	46,765	46,765	0	434,107	397,027	37,080
MONMOUTH	10,104	10,104	0	111,345	97,582	13,763
MORRIS	10,255	10,255	0	457,628	426,740	30,888
OCEAN	14,019	14,019	0	183,832	119,517	64,315
PASSAIC	0	0	0	517,554	437,683	79,871
SALEM	0	0	0	21,338	21,338	0
SOMERSET	7,221	7,221	0	85,057	61,558	23,499
SUSSEX	0	0	0	37,367	26,401	10,966
UNION	56,442	26,774	29,668	102,719	52,649	50,070
WARREN	1,513	1,513	0	7,927	1,513	6,414
STATE BUILDINGS*	0	0	0	214,629	214,629	0
NEW JERSEY	196,829	145,682	51,147	3,094,525	2,498,838	595,687
NJ 2011 1/9/12	105,930	60,019	45,911	1,569,188	1,415,183	154,005

*State buildings refer to structures owned or constructed by the State or any of its instrumentalities. See Exhibit A, Summary of Building Permit and Certificate Terms, on page 2.

Table 9a RETSPACE 1/18/13

Retail Square Feet Authorized by Building Permits: New Jersey Counties, November 2012						
County	November			Year to Date		
	Total	New Construction	Additions	Total	New Construction	Additions
ATLANTIC	5,025	5,025	0	33,225	7,225	26,000
BERGEN	1,784	1,784	0	62,284	55,289	6,995
BURLINGTON	17,514	17,514	0	103,877	31,663	72,214
CAMDEN	1,350	1,350	0	66,431	14,885	51,546
CAPE MAY	0	0	0	14,305	5,025	9,280
CUMBERLAND	2,032	0	2,032	118,767	110,582	8,185
ESSEX	0	0	0	3,030	2,244	786
GLOUCESTER	17,842	17,842	0	42,122	42,121	1
HUDSON	0	0	0	437,486	15,241	422,245
HUNTERDON	0	0	0	14,838	14,838	0
MERCER	0	0	0	2,898	2,898	0
MIDDLESEX	0	0	0	468,377	454,636	13,741
MONMOUTH	54,600	54,600	0	215,796	204,534	11,262
MORRIS	0	0	0	14,528	13,443	1,085
OCEAN	29,003	29,003	0	222,619	165,899	56,720
PASSAIC	0	0	0	36,043	31,129	4,914
SALEM	0	0	0	26,368	24,600	1,768
SOMERSET	2,100	2,100	0	2,100	2,100	0
SUSSEX	0	0	0	44,205	41,758	2,447
UNION	0	0	0	35,502	33,198	2,304
WARREN	2	2	0	25,747	25,747	0
STATE BUILDINGS*	0	0	0	0	0	0
NEW JERSEY	131,252	129,220	2,032	1,990,548	1,299,055	691,493
NJ 2011 1/9/12	110,798	99,865	10,933	1,520,205	1,389,271	130,934

*State buildings refer to structures owned or constructed by the State or any of its instrumentalities. See Exhibit A, Summary of Building Permit and Certificate Terms, on page 2.

Table 9b RETMUN1 1/18/13

Retail Square Feet Authorized by Building Permits: New Jersey Top Municipalities, November 2012					
Rank	Municipality	County	Total	New Construction	Additions
1	Marlboro Township	Monmouth	54,600	54,600	0
2	Stafford Township	Ocean	28,993	28,993	0
3	Woodbury City	Gloucester	17,842	17,842	0
4	Evesham Township	Burlington	17,514	17,514	0
5	Somers Point City	Atlantic	5,025	5,025	0
6	Franklin Township	Somerset	2,100	2,100	0
7	Vineland City	Cumberland	2,032	0	2,032
8	Fair Lawn Borough	Bergen	1,784	1,784	0
9	Gibbsboro Borough	Camden	1,350	1,350	0
10	Toms River Township	Ocean	10	10	0
11	Washington Township	Warren	1	1	0
12	Knowlton Township	Warren	1	1	0
13					
14					
15					
16					
17					
18					
19					
20					
	TOP MUNICIPALITIES		131,252	129,220	2,032
	NEW JERSEY		131,252	129,220	2,032
	TOP AS % OF STATE		100.0%	100.0%	100.0%

Table 9c RETMUN2 1/18/13

Retail Square Feet Authorized by Building Permits: New Jersey Top Municipalities, January-November 2012					
Rank	Municipality	County	Total	New Construction	Additions
1	Kearny Town	Hudson	427,828	5,583	422,245
2	North Brunswick Township	Middlesex	427,000	427,000	0
3	Vineland City	Cumberland	118,767	110,582	8,185
4	Brick Township	Ocean	103,551	76,831	26,720
5	Oceanport Borough	Monmouth	83,295	83,295	0
6	Burlington Township	Burlington	80,972	12,033	68,939
7	Marlboro Township	Monmouth	71,445	69,420	2,025
8	Stafford Township	Ocean	54,544	53,994	550
9	Berlin Township	Camden	50,109	0	50,109
10	Woodbridge Township	Middlesex	38,211	27,636	10,575
11	Howell Township	Monmouth	35,617	27,433	8,184
12	Lyndhurst Township	Bergen	28,890	28,890	0
13	Linden City	Union	27,615	27,615	0
14	Toms River Township	Ocean	26,411	11	26,400
15	Hamilton Township	Atlantic	26,000	0	26,000
16	Barnegat Township	Ocean	24,876	24,876	0
17	Deptford Township	Gloucester	24,276	24,276	0
18	Quinton Township	Salem	24,200	24,200	0
19	Washington Township	Warren	22,545	22,545	0
20	Woodbury City	Gloucester	17,842	17,842	0
TOP MUNICIPALITIES			1,713,994	1,064,062	649,932
NEW JERSEY			1,990,548	1,299,055	691,493
TOP AS % OF STATE			86.1%	81.9%	94.0%

Retail Square Feet Authorized by Building Permits January-November 2012

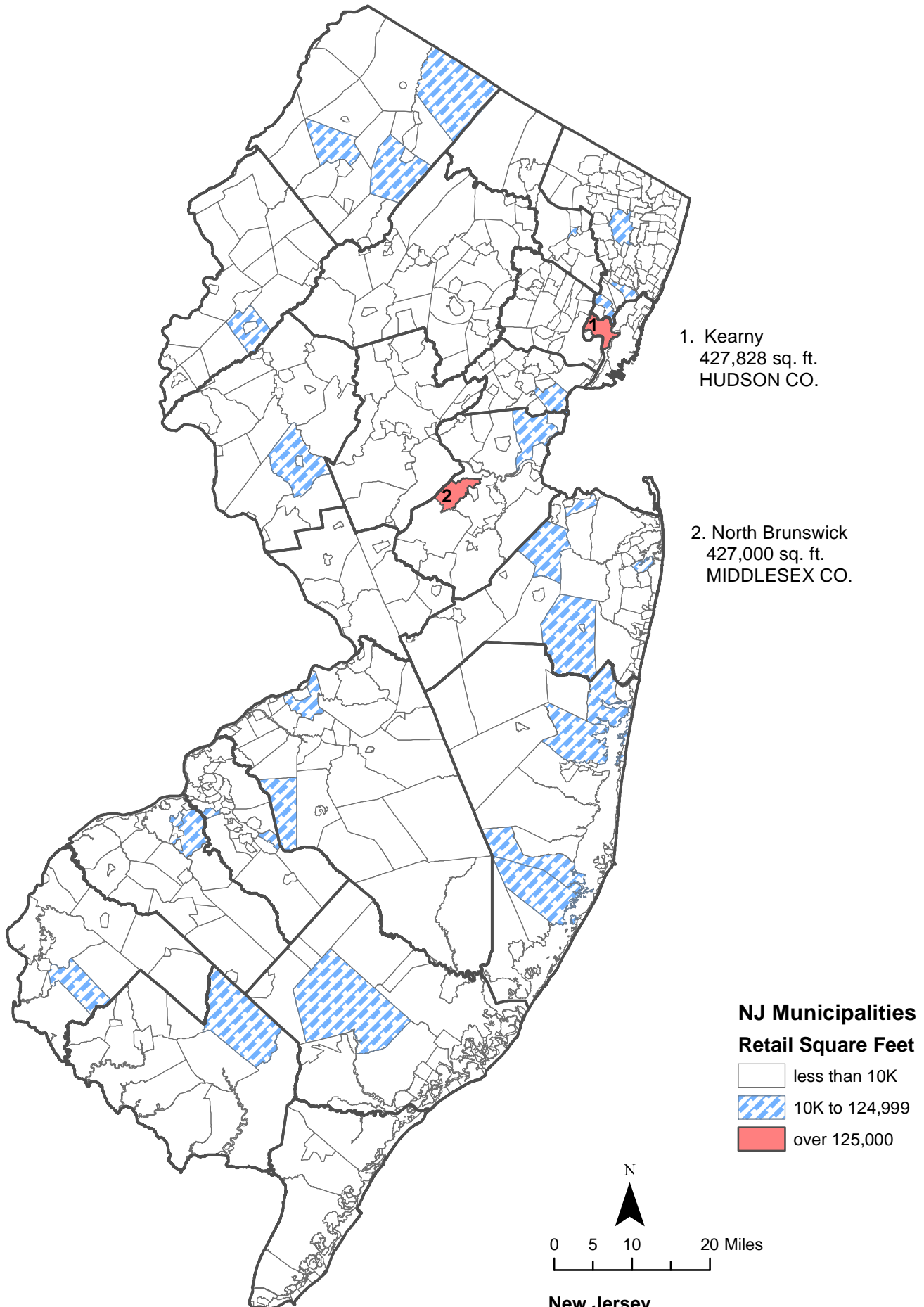


Table 10 CERTRET 1/18/13

Retail Square Feet Certified: New Jersey Counties, November 2012						
County	November			Year to Date		
	Total	New Construction	Additions	Total	New Construction	Additions
ATLANTIC	0	0	0	59,032	59,032	0
BERGEN	0	0	0	278,082	278,082	0
BURLINGTON	0	0	0	41,508	38,233	3,275
CAMDEN	0	0	0	23,935	23,935	0
CAPE MAY	0	0	0	2,604	1,884	720
CUMBERLAND	0	0	0	2,971	0	2,971
ESSEX	0	0	0	16,540	16,540	0
GLOUCESTER	0	0	0	229,186	224,434	4,752
HUDSON	0	0	0	0	0	0
HUNTERDON	0	0	0	26,838	26,838	0
MERCER	0	0	0	43,027	43,027	0
MIDDLESEX	0	0	0	35,552	35,552	0
MONMOUTH	0	0	0	44,968	34,352	10,616
MORRIS	6,169	6,169	0	34,220	25,442	8,778
OCEAN	25,868	25,868	0	106,799	96,692	10,107
PASSAIC	14,763	14,763	0	16,261	15,813	448
SALEM	400	400	0	2,168	400	1,768
SOMERSET	0	0	0	17,125	17,125	0
SUSSEX	0	0	0	14,208	8,384	5,824
UNION	0	0	0	11,330	3,086	8,244
WARREN	0	0	0	9,964	9,964	0
STATE BUILDINGS*	0	0	0	0	0	0
NEW JERSEY	47,200	47,200	0	1,016,318	958,815	57,503
NJ 2011 1/9/12	105,930	60,019	45,911	1,569,188	1,415,183	154,005

*State buildings refer to structures owned or constructed by the State or any of its instrumentalities. See Exhibit A, Summary of Building Permit and Certificate Terms, on page 2.

Table 11a WORK 1/18/13

Dollar Amount of Construction Authorized by Building Permits: New Jersey Counties, November 2012						
County	November			Year to Date		
	Total	Residential	Nonresidential	Total	Residential	Nonresidential
ATLANTIC	\$23,559,738	\$11,323,036	\$12,236,702	\$283,088,582	\$121,355,996	\$161,732,586
BERGEN	81,762,325	45,846,909	35,915,416	1,241,730,746	744,671,970	497,058,776
BURLINGTON	39,932,956	21,194,007	18,738,949	441,746,269	177,568,295	264,177,974
CAMDEN	50,609,222	10,610,336	39,998,886	367,412,642	147,250,309	220,162,333
CAPE MAY	29,897,522	26,403,774	3,493,748	232,138,855	186,979,438	45,159,417
CUMBERLAND	6,629,491	2,711,976	3,917,515	92,167,709	26,432,364	65,735,345
ESSEX	31,694,516	18,709,761	12,984,755	743,100,663	377,194,394	365,906,269
GLOUCESTER	50,096,974	10,172,675	39,924,299	308,870,824	109,172,275	199,698,549
HUDSON	72,359,130	23,991,954	48,367,176	859,260,591	552,631,868	306,628,723
HUNTERDON	12,099,340	6,495,310	5,604,030	127,955,771	66,863,038	61,092,733
MERCER	31,812,364	14,792,061	17,020,303	583,468,227	187,097,272	396,370,955
MIDDLESEX	48,785,965	22,519,234	26,266,731	892,404,826	308,947,201	583,457,625
MONMOUTH	51,393,005	29,346,878	22,046,127	713,800,048	455,611,547	258,188,501
MORRIS	51,729,686	31,272,965	20,456,721	745,913,367	307,940,781	437,972,586
OCEAN	29,613,401	23,811,182	5,802,219	655,481,613	409,110,169	246,371,444
PASSAIC	22,498,459	9,407,853	13,090,606	271,975,206	130,395,445	141,579,761
SALEM	1,975,533	918,658	1,056,875	40,864,731	13,778,105	27,086,626
SOMERSET	30,411,456	21,959,429	8,452,027	512,991,272	257,625,190	255,366,082
SUSSEX	7,831,751	3,746,546	4,085,205	103,533,240	56,318,141	47,215,099
UNION	38,410,290	18,576,004	19,834,286	610,054,997	246,446,582	363,608,415
WARREN	4,850,818	2,555,592	2,295,226	69,309,890	28,204,993	41,104,897
STATE BUILDINGS*	17,333,351	0	17,333,351	307,898,855	9,725,431	298,173,424
NEW JERSEY	\$735,287,293	\$356,366,140	\$378,921,153	\$10,205,168,924	\$4,921,320,804	\$5,283,848,120
NJ 2011 1/9/12	\$887,137,863	\$445,733,128	\$441,404,735	\$10,106,753,797	\$4,373,348,019	\$5,733,405,778

*State buildings refer to structures owned or constructed by the State or any of its instrumentalities. See Exhibit A, Summary of Building Permit and Certificate Terms, on page 2.

Table 11c WORK1 1/18/13

Dollar Amount Construction Authorized by Building Permits: Top Municipalities, November 2012					
Rank	Municipality	County	Total	Residential	Nonresidential
1	Jersey City	Hudson	\$31,837,352	\$6,663,643	\$25,173,709
2	Camden City	Camden	31,368,036	329,545	31,038,491
3	Glassboro Borough	Gloucester	20,735,448	1,351,875	19,383,573
4	Hoboken City	Hudson	19,949,890	2,688,448	17,261,442
5	West Deptford	Gloucester	12,922,323	201,738	12,720,585
6	Clifton City	Passaic	12,575,333	3,144,970	9,430,363
7	Elizabeth City	Union	10,770,071	958,589	9,811,482
8	Hamilton Township	Atlantic	9,860,716	689,388	9,171,328
9	South Brunswick	Middlesex	9,052,897	3,483,472	5,569,425
10	Burlington Township	Burlington	7,921,818	7,457,390	464,428
11	Sea Isle City	Cape May	7,802,256	6,625,056	1,177,200
12	Princeton Township	Mercer	7,616,176	2,513,621	5,102,555
13	Summit City	Union	7,508,435	4,273,430	3,235,005
14	Edison Township	Middlesex	7,212,684	3,353,372	3,859,312
15	Evesham Township	Burlington	7,069,598	321,525	6,748,073
16	Ocean City	Cape May	7,052,902	6,425,393	627,509
17	Woodbridge Township	Middlesex	6,248,936	2,771,309	3,477,627
18	Hopewell Township	Mercer	5,921,934	4,255,779	1,666,155
19	Moorestown Township	Burlington	5,802,244	770,304	5,031,940
20	Livingston Township	Essex	5,564,608	3,240,566	2,324,042
TOP MUNICIPALITIES			229,229,049	61,519,413	173,274,244
NEW JERSEY			\$735,287,293	\$356,366,140	\$378,921,153
TOP AS % OF STATE			31.2%	17.3%	45.7%

Table 11c WORK2 1/18/13

Dollar Amount Construction Authorized by Building Permits: Top Municipalities, January-November 2012					
Rank	Municipality	County	Total	Residential	Nonresidential
1	Jersey City	Hudson	\$368,923,265	\$237,376,884	\$131,546,381
2	Newark City	Essex	272,432,601	109,851,662	162,580,939
3	Hanover Township	Morris	146,416,139	19,323,252	127,092,887
4	Brick Township	Ocean	143,752,486	47,301,986	96,450,500
5	Edison Township	Middlesex	140,574,239	33,433,311	107,140,928
6	Franklin Township	Somerset	118,992,053	69,227,723	49,764,330
7	Elizabeth City	Union	117,672,984	13,982,036	103,690,948
8	Parsippany-Troy Hills	Morris	108,606,363	16,325,825	92,280,538
9	Woodbridge Township	Middlesex	103,430,887	31,605,490	71,825,397
10	Fort Lee Borough	Bergen	102,800,088	89,916,769	12,883,319
11	Cliffside Park Borough	Bergen	101,568,025	100,909,568	658,457
12	Hoboken City	Hudson	100,610,892	61,055,673	39,555,219
13	Lawrence Township	Mercer	98,867,902	10,009,578	88,858,324
14	Weehawken Township	Hudson	92,926,248	82,201,554	10,724,694
15	Cherry Hill Township	Camden	91,403,846	49,070,299	42,333,547
16	Plainsboro Township	Middlesex	90,861,033	6,920,562	83,940,471
17	Toms River Township	Ocean	89,312,600	40,623,063	48,689,537
18	Lakewood Township	Ocean	87,848,342	58,744,036	29,104,306
19	Atlantic City	Atlantic	87,499,850	6,235,897	81,263,953
20	Paramus Borough	Bergen	85,679,051	17,520,290	68,158,761
TOP MUNICIPALITIES			2,550,178,894	1,101,635,458	1,448,543,436
NEW JERSEY			\$10,205,168,924	\$4,921,320,804	\$5,283,848,120
TOP AS % OF STATE			25.0%	22.4%	27.4%

Estimated Dollar Amount of Construction Authorized by Building Permits, January-November 2012

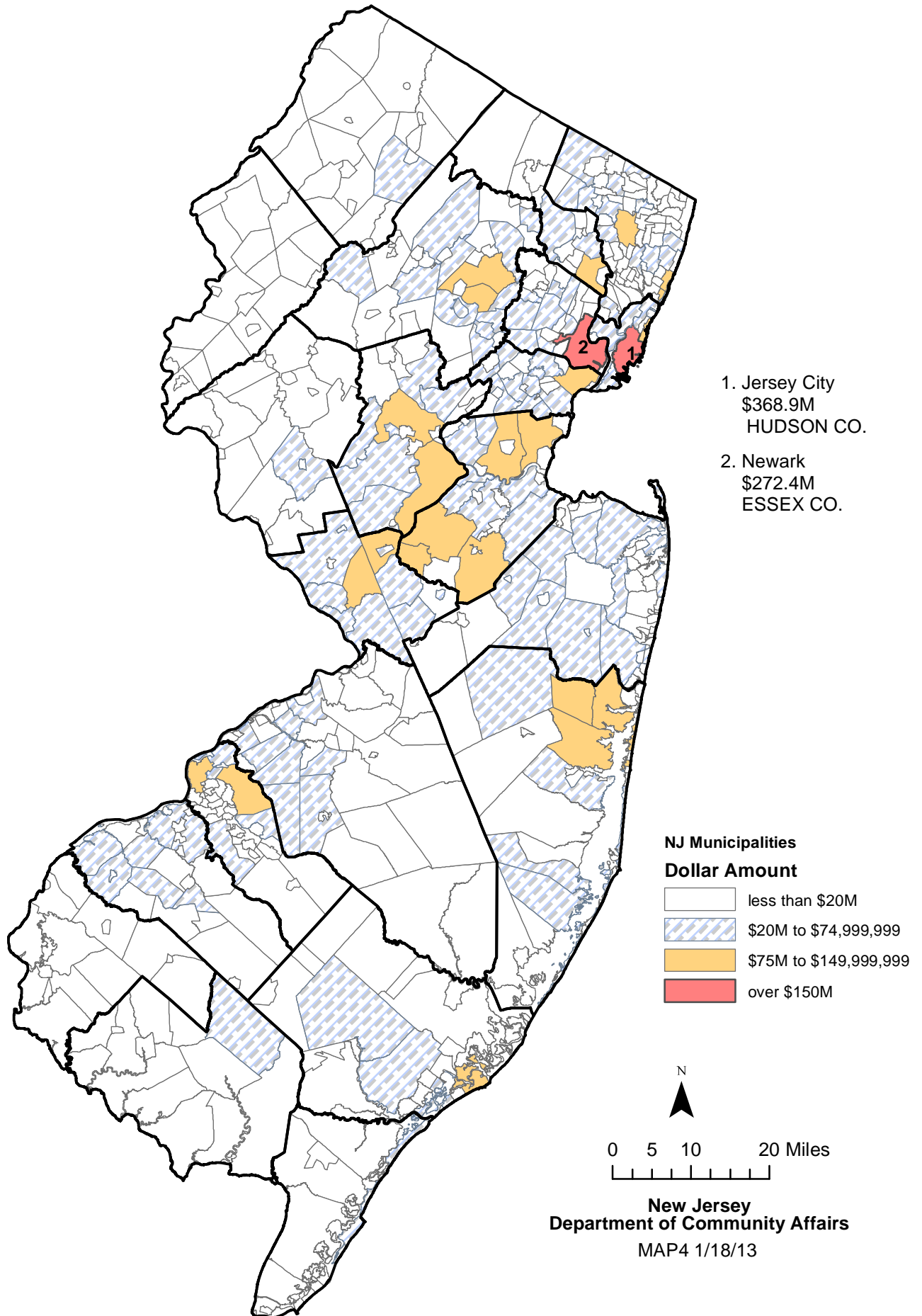


Table 12 USEGROUP 1/18/13

Dollar Amount of Construction Authorized by Building Permits by Use Group: New Jersey, November 2012						
Use Group	November			Year to Date		
	Permits	Construction Costs	Square Feet	Permits	Construction Costs	Square Feet
RESIDENTIAL	26,484	\$356,366,140	2,649,988	299,754	\$4,921,320,804	37,651,358
1 & 2 Family	25,024	304,636,929	2,197,721	279,835	3,631,747,580	24,843,230
Multifamily	1,460	51,729,211	452,267	19,919	1,289,573,224	12,808,128
NONRESIDENTIAL	5,104	\$378,921,153	1,549,828	70,944	5,283,848,120	23,051,369
Hotels, Motels, Guest Houses	62	5,046,556	94,931	851	85,957,788	283,946
Assembly	341	88,828,259	512,107	5,477	589,484,163	2,005,791
Business	1,826	130,805,664	324,646	25,730	2,233,790,930	7,079,410
Educational	156	28,128,765	152,687	2,647	501,457,207	736,903
Hazardous Use	5	339,190	0	64	4,135,522	1
Industrial	53	16,397,347	51,325	729	133,541,674	412,010
Institutional	60	6,075,835	0	881	270,816,717	1,271,633
Retail	341	22,025,777	131,252	4,870	430,466,501	1,990,548
Storage	178	30,787,822	141,322	1,956	338,994,964	4,273,726
Signs, Fences, Miscellaneous	2,082	50,485,938	141,558	27,739	695,202,654	4,997,401
NEW JERSEY	31,588	\$735,287,293	4,199,816	370,698	\$10,205,168,924	60,702,727
NJ 2011 1/9/12	34,112	\$887,137,863	4,588,334	359,112	\$10,106,753,797	47,156,885

Table 13 PARTIC 1/18/13

Dollar Amount of Construction Authorized by Building Permits: New Jersey, November 2012					
Month	Number of Municipalities Reporting	Total	New Construction	Additions	Alterations
JANUARY	566	\$801,889,615	\$280,010,757	\$55,891,076	\$465,987,782
FEBRUARY	565	715,313,774	237,881,629	69,923,604	407,508,541
MARCH	566	965,827,610	333,003,356	101,659,613	531,164,641
APRIL	566	942,537,104	261,807,385	130,873,212	549,856,507
MAY	564	925,334,109	223,854,042	112,326,468	589,153,599
JUNE	564	1,186,903,085	382,684,852	150,812,211	653,406,022
JULY	565	1,110,054,319	396,392,395	97,855,864	615,806,060
AUGUST	564	872,295,185	241,147,140	75,365,064	555,782,981
SEPTEMBER	562	986,250,984	415,767,245	65,276,013	505,207,726
OCTOBER	558	963,475,846	383,704,599	97,959,942	481,811,305
NOVEMBER	559	735,287,293	272,485,564	58,871,799	403,929,930
DECEMBER					
TOTAL		\$10,205,168,924	\$3,428,738,964	\$1,016,814,866	\$5,759,615,094
YEAR-TO-DATE TOTAL 2011 1/9/12		\$10,106,753,797	\$3,629,026,492	\$886,722,593	\$5,591,004,712

NOTE:

Users of the monthly *CONSTRUCTION REPORTER* may notice that year-to-date figures in a particular issue may not be obtained by merely summing the monthly totals that appear in previous issues. This is because the construction data compiled by the New Jersey Department of Community Affairs are continuously updated. Monthly construction reports submitted too late to make the January issue of the *CONSTRUCTION REPORTER*, for example, are included in the year-to-date totals that appear in the February issue.

MUNICIPAL SUMMARY DATA, November 2012

AREA NAME	AUTHORIZED HOUSING UNITS	AUTHORIZED HOUSING UNITS (CENSUS DEFINITIONS)	AUTHORIZED HOUSING UNITS CERTIFIED	OFFICE SPACE AUTHORIZED BY BUILDING PERMITS	RETAIL SPACE AUTHORIZED BY BUILDING PERMITS	RESIDENTIAL (\$ AMOUNT)	NONRESIDENTIAL (\$ AMOUNT)
	UNITS	UNITS	UNITS	PERMITS	PERMITS		
Atlantic County	24	35	23	0	5,025	\$11,323,036	\$12,236,702
Bergen County	46	132	44	25,896	1,784	45,846,909	35,915,416
Burlington County	51	51	81	0	17,514	21,194,007	18,738,949
Camden County	7	34	38	0	1,350	10,610,336	39,998,886
Cape May County	71	67	25	30,407	0	26,403,774	3,493,748
Cumberland County	16	14	10	500	2,032	2,711,976	3,917,515
Essex County	16	49	54	8,323	0	18,709,761	12,984,755
Gloucester County	35	28	39	33,308	17,842	10,172,675	39,924,299
Hudson County	204	230	77	3,501	0	23,991,954	48,367,176
Hunterdon County	12	18	3	0	0	6,495,310	5,604,030
Mercer County	18	11	8	33,017	0	14,792,061	17,020,303
Middlesex County	51	72	117	14,541	0	22,519,234	26,266,731
Monmouth County	46	71	55	54,252	54,600	29,346,878	22,046,127
Morris County	45	41	29	49,173	0	31,272,965	20,456,721
Ocean County	80	70	146	20,000	29,003	23,811,182	5,802,219
Passaic County	13	28	4	9,229	0	9,407,853	13,090,606
Salem County	0	1	4	0	0	918,658	1,056,875
Somerset County	107	122	73	4,335	2,100	21,959,429	8,452,027
Sussex County	1	16	8	7,100	0	3,746,546	4,085,205
Union County	16	52	22	31,064	0	18,576,004	19,834,286
Warren County	5	18	7	0	2	2,555,592	2,295,226
State Buildings	0		0	0	0	0	17,333,351
New Jersey	864	1,160	867	324,646	131,252	\$356,366,140	\$378,921,153
NEW JERSEY 2011	11,882	12,952	10,352	4,915,544	1,680,445	\$4,832,350,928	\$6,107,458,821
NEW JERSEY 2010	11,885	13,535	11,625	5,496,579	2,192,231	4,879,205,601	4,889,436,742
NEW JERSEY 2009	11,145	10,827	14,460	4,253,888	2,248,935	4,506,768,272	5,010,957,124
NEW JERSEY 2008	16,338	18,369	18,699	7,962,998	5,557,101	5,915,342,801	8,029,191,777
NEW JERSEY 2007	25,948	25,389	23,138	9,569,501	5,423,889	8,047,734,107	7,308,838,713
NEW JERSEY 2006	32,050	34,323	28,564	11,113,555	5,186,662	8,320,885,749	7,354,222,206
NEW JERSEY 2005	39,688	38,375	31,047	11,038,132	5,965,258	9,127,194,950	6,270,312,197
NEW JERSEY 2004	39,254	35,936	27,950	12,219,068	4,961,257	7,972,659,530	6,301,672,320
NEW JERSEY 2003	35,171	32,984	26,932	9,744,146	6,038,428	6,674,318,674	5,474,429,133
NEW JERSEY 2002	34,589	30,411	29,174	9,261,054	7,560,913	6,210,486,721	5,869,455,378
NEW JERSEY 2001	35,680	28,267	30,054	19,134,533	7,244,833	5,756,546,492	6,250,910,138
NEW JERSEY 2000	38,065	34,585	29,705	15,531,039	6,063,412	5,575,603,576	5,812,079,758
NEW JERSEY 1999	37,536	31,976	28,109	13,237,891	6,226,471	5,377,163,097	5,207,004,433
NEW JERSEY 1998	35,676	31,345	28,008	12,703,824	7,921,892	4,812,845,052	4,583,910,465
NEW JERSEY 1997	30,017	28,018	34,670	10,490,171	5,688,955	4,083,041,927	4,263,491,187
Atlantic County							
Absecon City	1	0 *	0	0	0	471,651	26,500
Atlantic City	0	2 *	0	0	0	707,892	827,242
Brigantine City	0	0	0	0	0	272,246	29,278
Buena Borough	No report	0 *	No report	No report	No report	No report	No report
Buena Vista Township	0	0	0	0	0	141,817	42,700
Corbin City	0	1 *	0	0	0	0	7,266
Egg Harbor City	0	1 *	0	0	0	24,459	7,775
Egg Harbor Township	9	6	13	0	0	1,424,293	262,016
Estell Manor City	0	0	0	0	0	29,950	0
Folsom Borough	0	0	0	0	0	23,809	0
Galloway Township	3	3	3	0	0	688,131	129,130
Hamilton Township	4	0	5	0	0	689,388	9,171,328
Hammonton Township	0	1 4	1	0	0	139,938	273,568
Linwood City	0	1 *	0	0	0	79,735	1

MUNICIPAL SUMMARY DATA, November 2012

AREA NAME	AUTHORIZED	AUTHORIZED		HOUSING UNITS CERTIFIED	OFFICE SPACE	RETAIL SPACE	RESI- DENTIAL (\$ AMOUNT)	NONRESI- DENTIAL (\$ AMOUNT)
	HOUSING UNITS	HOUSING UNITS (CENSUS DEFINITIONS)			AUTHORIZED BY BUILDING PERMITS	AUTHORIZED BY BUILDING PERMITS		
Longport City	3	4	4	0	0	0	2,586,550	0
Margate City	2	6	*	1	0	0	1,724,572	117,085
Mullica City	1	1	*	0	0	0	366,702	62,859
Northfield City	0	0	*	0	0	0	71,050	11,000
Pleasantville City	0	8	*	0	0	0	145,495	150,650
Port Republic City	0	0		0	0	0	22,682	0
Somers Point City	1	1		0	0	5,025	1,305,961	1,118,304
Ventnor City	0	0	*	0	0	0	335,410	0
Weymouth Township	0	0		0	0	0	71,305	0
Bergen County								
Allendale Borough	0	0		0	0	0	382,689	47,600
Alpine Borough	0	1	*	0	0	0	888,864	65,275
Bergenfield Borough	0	0		0	0	0	631,783	81,883
Bogota Borough	0	1	*	0	0	0	117,771	18,400
Carlstadt Borough	0	2	*	0	0	0	90,475	654,532
Cliffside Park Borough	0	4	*	0	0	0	12,400	0
Closter Borough	1	1		2	0	0	1,212,260	29,685
Cresskill Borough	2	0	*	1	0	0	1,559,296	8,245
Demarest Borough	0	1	*	2	0	0	348,070	253,950
Dumont Borough	0	0	*	0	0	0	613,068	98,500
Elmwood Park Borough	0	8	*	0	5,323	0	381,335	1,237,250
East Rutherford Borough	0	0	*	0	0	0	125,842	1,255,000
Edgewater Borough	0	0		0	0	0	728,102	534,338
Emerson Borough	0	6	*	1	0	0	296,511	135,500
Englewood City	0	6	*	1	0	0	430,393	1,042,466
Englewood Cliffs Borough	0	1	*	0	14,250	0	124,395	1,926,400
Fair Lawn Borough	0	1	*	0	0	1,784	1,121,566	1,689,966
Fairview Borough	0	7	*	0	0	0	107,550	449,381
Fort Lee Borough	0	0		4	0	0	1,944,194	981,178
Franklin Lakes Borough	0	1	*	1	0	0	1,206,215	263,075
Garfield City	12	12		16	0	0	1,427,929	134,142
Glen Rock Borough	1	3	*	0	0	0	1,180,088	161,715
Hackensack City	0	0		0	0	0	633,254	3,697,800
Harrington Park Borough	0	1	*	0	0	0	43,650	6,500
Hasbrouck Heights Borough	0	0	*	0	0	0	995,165	266,702
Haworth Borough	0	0		0	0	0	97,939	4,950
Hillsdale Borough	0	0		0	0	0	294,918	91,350
Ho-Ho-Kus Borough	1	1	*	1	0	0	385,192	1,230,500
Leonia Borough	0	0	*	0	0	0	331,038	334,870
Little Ferry Borough	1	24		0	0	0	2,956,772	158,210
Lodi Borough	0	0		0	3,032	0	174,665	1,062,266
Lyndhurst Township	0	15	*	0	0	0	426,061	669,102
Mahwah Township	2	2		1	0	0	2,080,941	1,114,691
Maywood Borough	0	0		1	64	0	310,172	2,330,510
Midland Park Borough	0	0		0	0	0	217,469	86,170
Montvale Borough	12	1		1	0	0	2,767,116	1,623,820
Moonachie Borough	0	0		0	0	0	316,381	183,096
New Milford Borough	0	1	*	1	0	0	288,987	4,400
North Arlington Borough	0	0		0	0	0	358,188	115,800
Northvale Borough	0	2	*	0	0	0	61,527	3,950
Norwood Borough	0	1	*	0	0	0	114,547	0
Oakland Borough	0	0	4	0	0	0	204,220	13,115
Old Tappan Borough	0	2	*	0	0	0	134,867	144,700
Oradell Borough	0	0	*	0	1,551	0	412,770	283,700
Palisades Park Borough	2	2		2	0	0	476,481	154,260

MUNICIPAL SUMMARY DATA, November 2012

AREA NAME	AUTHORIZED	AUTHORIZED	HOUSING	OFFICE SPACE	RETAIL SPACE	RESI-	NONRESI-
	HOUSING	HOUSING UNITS	UNITS	AUTHORIZED	AUTHORIZED	DENTIAL	DENTIAL
	UNITS	(CENSUS	CERTIFIED	BY BUILDING	BY BUILDING	(\$ AMOUNT)	(\$ AMOUNT)
		DEFINITIONS)		PERMITS	PERMITS		
Paramus Borough	0	0	2	0	0	1,406,868	4,015,004
Park Ridge Borough	1	1	0	0	0	498,247	252,093
Ramsey Borough	0	2 *	2	0	0	504,735	335,596
Ridgefield Borough	0	3 *	0	0	0	118,478	66,949
Ridgefield Park Village	0	0 *	0	0	0	355,884	24,700
Ridgewood Village	2	1	0	0	0	1,762,608	1,339,572
River Edge Borough	0	0 *	0	0	0	1,118,167	2,500
River Vale Township	0	0	0	0	0	239,116	165,570
Rochelle Park Township	0	0	0	0	0	184,304	460,560
Rockleigh Borough	0	0 *	0	0	0	0	198,901
Rutherford Borough	0	1 *	0	0	0	313,573	71,100
Saddle Brook Township	3	3	0	0	0	563,515	88,200
Saddle River Borough	1	1	1	0	0	1,810,698	249,233
South Hackensack Twp	0	0	0	0	0	26,500	676,350
Teaneck Township	0	0	0	0	0	1,362,300	673,624
Tenafly Borough	2	3	3	0	0	2,289,767	457,451
Teterboro Borough	0	0	0	0	0	0	156,818
Upper Saddle River Borough	0	0 *	0	0	0	490,651	92,381
Waldwick Borough	0	3 *	0	0	0	361,728	482,350
Wallington Borough	0	2 *	0	0	0	62,035	7,001
Washington Township	0	1 *	0	0	0	140,992	18,000
Westwood Borough	0	0	0	0	0	307,226	299,070
Woodcliff Lake Borough	2	2	0	0	0	1,141,092	65,500
Wood-Ridge Borough	0	1 *	0	0	0	255,541	42,500
Wyckoff Township	1	1 *	1	1,676	0	1,519,768	1,025,450
Burlington County							
Bass River Township	0	0 *	0	0	0	4,320	745
Beverly City	0	0 *	0	0	0	11,268	0
Bordentown City	0	0	0	0	0	13,185	0
Bordentown Township	1	1	2	0	0	465,098	468,885
Burlington City	0	0	1	0	0	50,839	625,400
Burlington Township	14	14	5	0	0	7,457,390	464,428
Chesterfield Township	1	1	0	0	0	506,411	11,150
Cinnaminson Township	18	20	33	0	0	3,412,640	108,955
Delanco Township	2	0 *	20	0	0	220,922	51,200
Delran Township	0	0 *	1	0	0	260,208	76,669
Eastampton Township	0	0	0	0	0	148,911	0
Edgewater Park Township	0	0 *	0	0	0	76,214	35,331
Evesham Township	1	1 *	2	0	17,514	321,525	6,748,073
Fieldsboro Borough	0	0	0	0	0	24,400	0
Florence Township	2	2	0	0	0	433,663	1,781,418
Hainesport Township	1	1	0	0	0	342,278	37,250
Lumberton Township	0	0	0	0	0	251,253	35,224
Mansfield Township	0	1 *	1	0	0	293,139	963,100
Maple Shade Borough	1	1	0	0	0	234,422	23,133
Medford Township	2	2	6	0	0	1,321,892	130,661
Medford Lakes Borough	0	0 *	0	0	0	135,019	24,500
Moorestown Township	2	2	1	0	0	770,304	5,031,940
Mount Holly Township	0	0	0	0	0	366,919	273,801
Mount Laurel Township	4	0	4	0	0	1,609,965	1,098,501
New Hanover Township	0	0	0	0	0	6,262	0
North Hanover Township	0	1 *	1	0	0	68,005	17,330
Palmyra Borough	0	1 *	0	0	0	235,418	6,400
Pemberton Borough	0	0	0	0	0	48,303	0
Pemberton Township	1	1	2	0	0	394,095	77,600

MUNICIPAL SUMMARY DATA, November 2012

AREA NAME	AUTHORIZED	AUTHORIZED	HOUSING	OFFICE SPACE	RETAIL SPACE	RESI-	NONRESI-
	HOUSING	HOUSING UNITS		BY BUILDING	BY BUILDING		
	UNITS	(CENSUS	UNITS	PERMITS	PERMITS	(\$ AMOUNT)	(\$ AMOUNT)
		DEFINITIONS)	CERTIFIED				
Riverside Township	0	0 *	1	0	0	40,759	500
Riverton Borough	0	1 *	0	0	0	57,724	0
Shamong Township	0	0 *	0	0	0	126,115	74,600
Southampton Township	0	1 *	0	0	0	304,043	26,300
Springfield Township	0	0	0	0	0	71,340	71,200
Tabernacle Township	0	0 *	0	0	0	165,308	130,353
Washington Township	0	0	0	0	0	71,490	9,484
Westampton Township	0	0 *	0	0	0	145,399	53,455
Willingboro Township	0	0	0	0	0	727,061	250,471
Woodland Township	1	0 *	1	0	0	500	28,250
Wrightstown Borough	0	0 *	0	0	0	0	2,642
Camden County							
Audubon Borough	0	0 *	0	0	0	194,438	33,875
Audubon Park Borough	0	0	0	0	0	32,600	2,115
Barrington Borough	0	0	1	0	0	137,657	100,285
Bellmawr Borough	0	0	0	0	0	93,559	35,500
Berlin Borough	2	2	0	0	0	321,109	226,467
Berlin Township	1	1	0	0	0	130,188	453,000
Brooklawn Borough	0	0	0	0	0	30,040	277,500
Camden City	0	1	0	0	0	329,545	31,038,491
Cherry Hill Township	2	2	31	0	0	2,318,703	2,215,101
Chesilhurst Borough	0	0 *	0	0	0	5,997	0
Clementon Borough	0	0 *	0	0	0	104,577	450
Collingswood Borough	0	0 *	0	0	0	423,573	19,050
Gibbsboro Borough	0	0 *	0	0	1,350	20,010	122,630
Gloucester City	0	0 *	0	0	0	66,499	401,358
Gloucester Township	0	0	0	0	0	1,561,018	2,253,621
Haddon Township	0	1 *	0	0	0	428,930	12,535
Haddonfield Borough	0	1 *	0	0	0	841,853	107,525
Haddon Heights Borough	0	6 *	1	0	0	357,096	54,751
Hi-nella Borough	0	0 *	0	0	0	6,630	789
Laurel Springs Borough	0	0 *	0	0	0	13,330	6,500
Lawnside Borough	0	0	0	0	0	20,648	7,280
Lindenwold Borough	0	5 *	0	0	0	62,479	24,500
Magnolia Borough	0	0 *	0	0	0	58,055	234,500
Merchantville Borough	0	1 *	0	0	0	75,004	0
Mount Ephraim Borough	0	0	0	0	0	118,296	0
Oaklyn Borough	0	0	0	0	0	73,860	7,000
Pennsauken Township	0	0 *	0	0	0	445,638	372,488
Pine Hill Borough	0	12 *	0	0	0	178,510	0
Pine Valley Borough	0	0 *	0	0	0	40,000	1,500
Runnemede Borough	0	0	0	0	0	107,862	12,657
Somerdale Borough	0	0	0	0	0	72,428	4,020
Stratford Borough	0	0	0	0	0	75,999	3,600
Tavistock Borough	0	0 0	0	0	0	0	0
Voorhees Township	0	0 *	0	0	0	825,395	1,879,693
Waterford Township	2	2	5	0	0	333,651	26,510
Winslow Township	0	0	0	0	0	692,121	63,595
Woodlynne Borough	0	0	0	0	0	13,038	0
Cape May County							
Avalon Borough	11	11	2	0	0	5,337,237	123,420
Cape May City	0	1 *	1	0	0	1,194,009	48,266
Cape May Point Borough	1	0	0	0	0	316,165	0
Dennis Township	0	1 *	0	0	0	178,498	41,900
Lower Township	2	0	1	0	0	626,069	137,913

MUNICIPAL SUMMARY DATA, November 2012

AREA NAME	AUTHORIZED HOUSING	AUTHORIZED HOUSING UNITS (CENSUS DEFINITIONS)	HOUSING UNITS CERTIFIED	OFFICE SPACE AUTHORIZED BY BUILDING PERMITS	RETAIL SPACE AUTHORIZED BY BUILDING PERMITS	RESI-DENTIAL (\$ AMOUNT)	NONRESI-DENTIAL (\$ AMOUNT)
	UNITS						
Middle Township	1	1 4	9	12,736	0	701,789	397,720
North Wildwood City	1	1	1	0	0	531,604	269,052
Ocean City	17	16	6	0	0	6,425,393	627,509
Sea Isle City	30	30	1	17,671	0	6,625,056	1,177,200
Stone Harbor Borough	5	4	1	0	0	2,665,323	294,701
Upper Township	2	1	3	0	0	825,526	37,881
West Cape May Borough	0	0	0	0	0	69,035	15,000
West Wildwood Borough	0	0	0	0	0	46,030	0
Wildwood City	0	0	0	0	0	319,782	14,801
Wildwood Crest Borough	1	1	0	0	0	448,060	105,385
Woodbine Borough	0	0	0	0	0	94,198	203,000
Cumberland County							
Bridgeton City	0	1 *	0	0	0	134,446	306,363
Commercial Township	0	1 *	0	0	0	24,200	27,800
Deerfield Township	1	0	1	0	0	240,951	31,551
Downe Township	0	0 *	1	0	0	56,152	0
Fairfield Township	No report	0	No report	No report	No report	No report	No report
Greenwich Township	0	1 *	0	0	0	2,750	7,200
Hopewell Township	0	0 *	0	0	0	68,188	459,411
Lawrence Township	0	0	0	0	0	49,500	0
Maurice River Township	1	1	0	0	0	132,016	54,000
Millville City	1	1	4	0	0	306,484	1,997,372
Shiloh Borough	0	0 *	0	0	0	0	17,834
Stow Creek Township	0	0	0	0	0	7,600	500
Upper Deerfield Township	0	1 *	0	0	0	148,135	75,800
Vineland City	13	8 *	4	500	2,032	1,541,554	939,684
Essex County							
Belleville Town	0	0	0	0	0	539,577	97,915
Bloomfield Township	0	0 *	0	7,290	0	931,374	821,000
Caldwell Township	1	0 *	0	0	0	322,800	0
Cedar Grove Township	0	2 *	0	0	0	240,835	106,699
East Orange City	0	0	0	0	0	917,740	183,125
Essex Fells Township	1	1	0	0	0	883,000	0
Fairfield Township	0	0	0	336	0	76,969	192,119
Glen Ridge Borough	0	0 *	0	0	0	274,176	0
Irvington Township	0	0	0	0	0	331,600	238,077
Livingston Township	2	2	1	0	0	3,240,566	2,324,042
Maplewood Township	0	5 *	0	697	0	1,306,301	517,650
Millburn Township	No report	3 *	No report	No report	No report	No report	No report
Montclair Township	0	0	0	0	0	1,527,780	362,739
Newark City	6	5 4	49	0	0	1,747,932	3,043,628
North Caldwell Borough	0	0	1	0	0	538,354	400
Nutley Township	1	1 *	1	0	0	779,172	240,488
City of Orange Township	0	24 *	0	0	0	261,668	140,900
Roseland Borough	0	1 *	0	0	0	292,091	1,844,967
South Orange Village	0	0	0	0	0	668,624	1,211,450
Verona Township	2	2	0	0	0	1,106,817	26,288
West Caldwell Township	3	3	0	0	0	1,313,711	337,894
West Orange Township	0	0	2	0	0	1,408,674	1,295,374
Gloucester County							
Clayton Borough	1	1	1	0	0	290,438	1,363,625
Deptford Township	1	0	3	0	0	602,510	404,650
East Greenwich Township	2	2	7	0	0	683,369	130,200
Elk Township	0	0	0	0	0	26,400	78,900
Franklin Township	3	1 *	1	0	0	859,582	11,300

MUNICIPAL SUMMARY DATA, November 2012

AREA NAME	AUTHORIZED	AUTHORIZED	HOUSING	OFFICE SPACE	RETAIL SPACE	RESI-	NONRESI-
	HOUSING	HOUSING UNITS	UNITS	AUTHORIZED	AUTHORIZED	DENTIAL	DENTIAL
	UNITS	(CENSUS	CERTIFIED	BY BUILDING	BY BUILDING	(\$ AMOUNT)	(\$ AMOUNT)
		DEFINITIONS)		PERMITS	PERMITS		
Glassboro Borough	10	2	5	0	0	1,351,875	19,383,573
Greenwich Township	1	1	0	0	0	185,853	232,500
Harrison Township	8	8	8	0	0	2,082,692	79,463
Logan Township	0	0 *	0	0	0	110,524	596,300
Mantua Township	0	0	0	0	0	628,229	82,738
Monroe Township	2	2	5	0	0	636,036	46,280
National Park Borough	0	0	0	0	0	65,406	0
Newfield Borough	0	0 *	0	0	0	8,950	0
Paulsboro Borough	0	0 *	0	0	0	68,000	301,500
Pitman Borough	0	1 *	0	0	0	172,495	68,950
South Harrison Township	0	0	0	0	0	29,711	19,000
Swedesborough Borough	0	3 *	0	0	0	0	3,950
Washington Township	0	0	0	0	0	1,036,707	314,475
Wenonah Borough	0	0	0	0	0	40,145	600
West Deptford Township	0	0	2	2,100	0	201,738	12,720,585
Westville Borough	0	0	0	0	0	30,324	8,300
Woodbury City	0	0	0	31,208	17,842	178,132	3,826,951
Woodbury Heights Borough	0	0	0	0	0	11,331	2,000
Woolwich Township	7	7	7	0	0	872,228	248,459
Hudson County							
Bayonne City	0	7 *	0	0	0	2,020,745	308,649
East Newark Borough	0	0	0	0	0	21,240	300
Guttenberg Town	2	0	0	3,501	0	246,098	449,800
Harrison Town	143	141	0	0	0	2,739,043	306,463
Hoboken City	5	5	30	0	0	2,688,448	17,261,442
Jersey City	8	8	0	0	0	6,663,643	25,173,709
Kearny Town	0	0 *	0	0	0	124,580	204,315
North Bergen Township	0	0	0	0	0	311,223	1,676,072
Secaucus Town	2	1	2	0	0	843,199	1,912,550
Union City	0	25	45	0	0	1,054,021	70,984
Weehawken Township	1	0 *	0	0	0	2,069,612	882,102
West New York Town	43	43	0	0	0	5,210,102	120,790
Hunterdon County							
Alexandria Township	0	0 *	0	0	0	104,127	175,000
Bethlehem Township	0	0	1	0	0	391,000	112,333
Bloomsbury Borough	0	0	0	0	0	1,000	62,125
Califon Borough	0	0	0	0	0	14,250	1,875
Clinton Town	0	0	0	0	0	48,637	18,847
Clinton Township	0	0 4	0	0	0	233,595	690,642
Delaware Township	0	1 *	0	0	0	20,000	12,500
East Amwell Township	0	0 *	0	0	0	94,900	82,540
Flemington Borough	0	6 *	0	0	0	41,200	46,000
Franklin Township	0	0	0	0	0	50,875	148,200
Frenchtown Borough	0	0	0	0	0	66,144	58,000
Glen Gardner Borough	0	0	0	0	0	13,800	1,867
Hampton Borough	0	0	0	0	0	22,748	1,895
High Bridge Borough	0	0 *	0	0	0	32,319	0
Holland Township	0	0	0	0	0	193,930	77,185
Kingwood Township	1	1	0	0	0	251,945	16,475
Lambertville City	0	0	0	0	0	113,500	7,995
Lebanon Borough	0	0	0	0	0	1,000	4,300
Lebanon Township	1	1	0	0	0	507,832	347,000
Milford Borough	0	0	0	0	0	5,000	1,184
Raritan Township	1	1	1	0	0	852,874	2,045,073
Readington Township	8	7	0	0	0	1,935,986	1,533,444

MUNICIPAL SUMMARY DATA, November 2012

AREA NAME	AUTHORIZED HOUSING UNITS	AUTHORIZED HOUSING UNITS (CENSUS DEFINITIONS)	AUTHORIZED HOUSING UNITS CERTIFIED	OFFICE SPACE AUTHORIZED BY BUILDING PERMITS	RETAIL SPACE AUTHORIZED BY BUILDING PERMITS	RESIDENTIAL (\$ AMOUNT)	NONRESIDENTIAL (\$ AMOUNT)
	UNITS						
Stockton Borough	No report	0 *	No report	No report	No report	No report	No report
Tewksbury Township	1	1	1	0	0	385,999	5,008
Union Township	0	0	0	0	0	1,011,045	88,092
West Amwell Township	0	0	0	0	0	101,604	66,450
Mercer County							
East Windsor Township	2	2	3	0	0	962,223	2,369,640
Ewing Township	0	0	0	0	0	489,704	1,510,160
Hamilton Township	2	6 *	2	0	0	2,228,348	732,659
Hightstown Borough	0	0	0	0	0	55,877	56,845
Hopewell Borough	0	0	0	0	0	23,650	43,250
Hopewell Township	12	0	0	0	0	4,255,779	1,666,155
Lawrence Township	0	0 *	0	0	0	851,594	1,044,628
Pennington Borough	0	0	0	0	0	124,837	27,000
Princeton Borough	0	0	0	0	0	543,658	194,065
Princeton Township	1	1	1	0	0	2,513,621	5,102,555
Trenton City	0	2 *	0	0	0	804,945	1,044,647
Robbinsville Township	1	0	1	30,364	0	503,648	1,891,395
West Windsor Township	0	0	1	2,653	0	1,434,177	1,337,304
Middlesex County							
Carteret Borough	0	8 *	0	0	0	244,078	234,315
Cranbury Township	0	0 4	0	0	0	524,250	883,355
Dunellen Borough	1	1	0	0	0	163,050	387,700
East Brunswick Township	0	0	2	11,160	0	843,953	497,625
Edison Township	3	3	3	2,058	0	3,353,372	3,859,312
Helmetta Borough	0	0	0	0	0	46,803	0
Highland Park Borough	0	7 *	0	0	0	0	516,934
Jamesburg Borough	0	0	0	0	0	54,987	2,000
Old Bridge Township	0	0	4	0	0	763,097	173,545
Metuchen Borough	0	0 4	1	0	0	265,364	136,575
Middlesex Borough	0	0 *	1	0	0	347,976	218,651
Milltown Borough	0	0 *	0	0	0	122,407	60,875
Monroe Township	15	15	33	0	0	3,410,734	1,338,333
New Brunswick City	0	10 *	0	0	0	119,731	992,187
North Brunswick Township	7	7	2	0	0	1,149,055	820,253
Perth Amboy City	0	0	0	0	0	283,443	812,860
Piscataway Township	4	4	13	0	0	1,580,979	1,578,154
Plainsboro Township	0	0	0	0	0	457,900	2,777,123
Sayreville Borough	5	5	29	0	0	2,040,594	54,400
South Amboy City	0	0 *	0	0	0	34,808	20,449
South Brunswick Township	10	10	6	1,323	0	3,483,472	5,569,425
South Plainfield Borough	0	1 *	1	0	0	88,485	1,729,642
South River Borough	0	0	1	0	0	171,789	65,829
Spotswood Borough	0	1 *	0	0	0	197,598	59,562
Woodbridge Township	6	0	21	0	0	2,771,309	3,477,627
Monmouth County							
Allenhurst Borough	0	0	0	0	0	107,718	38,400
Allentown Borough	0	0	0	0	0	54,045	8,800
Asbury Park City	0	0 *	0	0	0	571,672	598,363
Atlantic Highlands Borough	0	1 *	0	0	0	22,787	224,713
Avon-by-the-Sea Borough	0	1 *	1	0	0	290,269	18,300
Belmar Borough	0	0	0	0	0	517,881	237,171
Bradley Beach Borough	1	1	0	0	0	1,155,580	1
Brielle Borough	1	1	0	0	0	1,056,849	1,765,500
Colts Neck Township	0	0	0	0	0	656,362	70,001
Deal Borough	1	1	0	682	0	1,092,014	25,300

MUNICIPAL SUMMARY DATA, November 2012

AREA NAME	AUTHORIZED	AUTHORIZED	HOUSING	OFFICE SPACE	RETAIL SPACE	RESI-	NONRESI-
	HOUSING	HOUSING UNITS	UNITS	AUTHORIZED	AUTHORIZED	DENTIAL	DENTIAL
	UNITS	(CENSUS	CERTIFIED	BY BUILDING	BY BUILDING	(\$ AMOUNT)	(\$ AMOUNT)
		DEFINITIONS)		PERMITS	PERMITS		
Eatontown Borough	0	0	0	0	0	511,117	2,887,052
Englishtown Borough	1	1	1	0	0	228,435	0
Fair Haven Borough	1	1	0	0	0	641,320	25,000
Farmingdale Borough	No report	0	0	No report	No report	No report	No report
Freehold Borough	0	5 *	1	0	0	180,746	141,596
Freehold Township	0	0	0	22,912	0	1,330,873	3,569,737
Highlands Borough	0	0 *	0	0	0	121,692	42,400
Holmdel Township	0	1 *	0	0	0	297,650	275,600
Howell Township	0	0	7	0	0	148,690	2,000
Interlaken Borough	0	0 *	0	0	0	22,790	0
Keansburg Borough	0	0 *	0	0	0	58,274	276,934
Keyport Borough	0	1 *	0	0	0	62,421	54,600
Little Silver Borough	0	2 *	1	0	0	249,585	50,125
Loch Arbour Village	0	0 *	0	0	0	6,000	7,000
Long Branch City	1	1	0	0	0	2,008,644	50,100
Manalapan Township	4	15 *	15	870	0	1,731,964	516,766
Manasquan Borough	0	0	0	0	0	527,625	24,200
Marlboro Township	3	3	20	0	54,600	1,078,561	3,065,537
Matawan Borough	0	0 *	0	0	0	107,875	35,257
Aberdeen Township	0	0	2	504	0	411,235	114,996
Middletown Township	2	2	1	0	0	1,301,622	1,293,456
Millstone Township	1	1	0	0	0	563,761	193,950
Monmouth Beach Borough	1	1 *	0	0	0	406,877	0
Neptune Township	0	10	0	0	0	795,042	180,139
Neptune City Borough	0	0	0	0	0	244,001	102,087
Tinton Falls Borough	No report	2 *	No report	No report	No report	No report	No report
Ocean Township	0	0	0	0	0	514,196	146,611
Oceanport Borough	0	0	0	0	0	123,400	2,000
Hazlet Township	0	0	0	29,284	0	226,281	3,757,231
Red Bank Borough	0	1 *	0	0	0	145,068	189,669
Roosevelt Borough	0	0 *	0	0	0	6,497	0
Rumson Borough	2	2	3	0	0	1,861,312	86,000
Sea Bright Borough	0	0 *	0	0	0	0	0
Sea Girt Borough	1	1	1	0	0	1,523,025	44,301
Shrewsbury Borough	17	4 *	2	0	0	1,576,767	885,275
Shrewsbury Township	0	0 *	0	0	0	0	0
Lake Como Borough	2	0 *	0	0	0	372,931	299,000
Spring Lake Borough	1	1	0	0	0	952,527	62,000
Spring Lake Heights Boro	1	1	0	0	0	567,459	0
Union Beach Borough	0	0	0	0	0	490,351	0
Upper Freehold Township	2	2	0	0	0	562,223	148,916
Wall Township	3	3	0	0	0	1,711,650	377,943
West Long Branch Borough	0	5 *	0	0	0	151,214	152,100
Morris County							
Boonton Town	0	1 *	0	0	0	95,336	1,345,977
Boonton Township	1	1 *	0	0	0	491,068	0
Butler Borough	0	0	2	0	0	119,160	9,000
Chatham Borough	0	1 *	0	0	0	436,801	67,178
Chatham Township	4	4	4	0	0	3,450,110	82,590
Chester Borough	1	6 *	0	0	0	67,955	48,400
Chester Township	0	0	0	0	0	492,998	467,900
Denville Township	0	1 *	0	0	0	714,995	354,413
Dover Town	0	1 *	0	0	0	117,690	11,650
East Hanover Township	1	1 *	0	0	0	285,220	1,404,650
Florham Park Borough	1	4 *	0	0	0	1,129,304	2,164,441

MUNICIPAL SUMMARY DATA, November 2012

AREA NAME	AUTHORIZED	AUTHORIZED	HOUSING	OFFICE SPACE	RETAIL SPACE	RESI-	NONRESI-
	HOUSING	HOUSING UNITS		AUTHORIZED	AUTHORIZED		
	UNITS	(CENSUS	UNITS	BY BUILDING	BY BUILDING	(\$ AMOUNT)	(\$ AMOUNT)
		DEFINITIONS)	CERTIFIED	PERMITS	PERMITS		
Hanover Township	6	1 *	1	0	0	1,523,060	2,423,052
Harding Township	1	1	1	0	0	1,778,638	86,632
Jefferson Township	0	0 *	2	0	0	445,774	120,500
Kinnelon Borough	1	1	1	0	0	861,933	454,690
Lincoln Park Borough	0	0	0	0	0	127,666	0
Madison Borough	0	2 *	1	0	0	594,396	394,450
Mendham Borough	0	0 *	0	0	0	220,652	202,400
Mendham Township	0	0	0	0	0	576,082	88,333
Mine Hill Township	0	0 *	0	0	0	810,555	0
Montville Township	1	1	4	0	0	1,275,118	1,156,455
Morris Township	1	2 *	1	9,719	0	1,858,287	1,885,487
Morris Plains Borough	16	1 *	0	0	0	2,808,373	12,000
Morristown Town	0	0	0	0	0	610,207	2,017,134
Mountain Lakes Borough	0	1 *	2	0	0	360,577	5,000
Mount Arlington Borough	1	1 *	0	0	0	383,348	52,620
Mount Olive Township	2	2	4	0	0	514,448	166,408
Netcong Borough	0	0 *	0	0	0	11,087	3,615
Parsippany-Troy Hills Twp	2	0 *	1	28,232	0	1,359,761	3,086,137
Long Hill Township	0	0	0	0	0	375,625	101,105
Pequannock Township	0	1 *	0	0	0	460,866	929,987
Randolph Township	3	3	1	0	0	1,120,689	59,215
Riverdale Borough	0	0	3	0	0	97,524	150,895
Rockaway Borough	0	0	0	0	0	189,821	242,050
Rockaway Township	0	1 *	0	11,222	0	3,397,536	445,504
Roxbury Township	3	3	0	0	0	1,364,140	324,006
Victory Gardens Borough	0	0	0	0	0	12,065	0
Washington Township	0	0	1	0	0	661,357	88,300
Wharton Borough	0	0 *	0	0	0	72,743	4,547
Ocean County							
Barnegat Light Borough	1	1	0	0	0	422,900	0
Bay Head Borough	0	0	0	0	0	0	0
Beach Haven Borough	0	0	1	0	0	31,575	56,125
Beachwood Borough	0	0	2	0	0	88,013	0
Berkeley Township	4	5 *	2	0	0	1,492,698	14,100
Brick Township	1	1	0	0	0	1,277,498	213,620
Toms River Township	4	12 *	2	20,000	10	1,988,268	2,805,592
Eagleswood Township	0	1 *	0	0	0	23,934	0
Harvey Cedars Borough	1	1	0	0	0	558,892	0
Island Heights Borough	1	1	0	0	0	372,095	24,700
Jackson Township	1	8 *	9	0	0	1,202,459	674,072
Lacey Township	8	6	5	0	0	1,664,917	124,509
Lakehurst Borough	0	0	0	0	0	25,050	25,000
Lakewood Township	13	10	82	0	0	3,494,269	588,559
Lavallette Borough	0	2 *	0	0	0	0	0
Little Egg Harbor Township	2	2	9	0	0	2,426,707	121,550
Long Beach Township	5	4	0	0	0	1,158,570	4,000
Manchester Township	5	0	3	0	0	1,168,201	2,705
Mantoloking Borough	0	1 *	0	0	0	0	0
Ocean Township	9	8	6	0	0	1,781,742	1,500
Ocean Gate Borough	0	0	0	0	0	123,689	0
Pine Beach Borough	0	0	0	0	0	48,850	0
Plumsted Township	0	2 *	0	0	0	60,126	173,040
Point Pleasant Borough	5	2 *	2	0	0	1,360,662	59,675
Point Pleasant Beach Boro	0	0	0	0	0	379,855	23,200
Seaside Heights Borough	0	0	0	0	0	31,144	0

MUNICIPAL SUMMARY DATA, November 2012

AREA NAME	AUTHORIZED	AUTHORIZED	HOUSING	OFFICE SPACE	RETAIL SPACE	RESI-	NONRESI-
	HOUSING	HOUSING UNITS	UNITS	AUTHORIZED	AUTHORIZED	DENTIAL	DENTIAL
	UNITS	(CENSUS	CERTIFIED	BY BUILDING	BY BUILDING	(\$ AMOUNT)	(\$ AMOUNT)
		DEFINITIONS)		PERMITS	PERMITS		
Seaside Park Borough	0	1 *	0	0	0	0	0
Ship Bottom Borough	0	0	0	0	0	66,949	5,000
South Toms River Borough	0	0	0	0	0	37,271	4,000
Stafford Township	1	1	3	0	28,993	929,860	711,741
Surf City Borough	0	0	0	0	0	135,590	0
Tuckerton Borough	0	0 *	0	0	0	0	93,485
Barneget Township	19	1	20	0	0	1,459,398	76,046
Passaic County							
Bloomington Borough	0	0	0	0	0	66,819	125
Clifton City	3	4 *	0	8,800	0	3,144,970	9,430,363
Haledon Borough	0	0	0	0	0	32,115	5,950
Hawthorne Borough	0	5 *	0	0	0	437,971	308,401
Little Falls Township	0	0	0	0	0	254,190	219,165
North Haledon Borough	0	0	0	0	0	99,652	12,400
Passaic City	0	6 *	0	0	0	321,303	527,580
Paterson City	No report	1 *	No report	No report	No report	No report	No report
Pompton Lakes Borough	0	0 *	0	0	0	197,313	7,095
Prospect Park Borough	0	0 *	0	0	0	23,040	0
Ringwood Borough	0	1 *	0	0	0	265,630	39,920
Totowa Borough	1	1 *	0	0	0	464,423	453,150
Wanaque Borough	0	0	1	0	0	73,145	42,100
Wayne Township	1	1	1	429	0	1,984,031	1,760,247
West Milford Township	0	1 *	1	0	0	582,306	164,770
Woodland Park Borough	8	8	1	0	0	1,460,945	119,340
Salem County							
Alloway Township	0	0	0	0	0	25,000	4,950
Elmer Borough	0	0	0	0	0	5,600	17,200
Elsinboro Township	0	0	0	0	0	13,198	0
Lower Alloways Creek Twp	0	0	1	0	0	58,033	134,000
Mannington Township	0	0	0	0	0	33,340	37,000
Oldmans Township	0	0	0	0	0	20,359	0
Penns Grove Borough	0	0	0	0	0	25,218	13,250
Pennsville Township	0	0	0	0	0	118,681	189,727
Pilesgrove Township	0	0	1	0	0	94,271	1,000
Pittsgrove Township	0	0 4	0	0	0	57,978	219,270
Quinton Township	0	0	0	0	0	27,475	300
Salem City	0	0 *	0	0	0	28,930	5,350
Carneys Point Township	0	1 *	2	0	0	287,855	353,515
Upper Pittsgrove Township	0	0	0	0	0	11,750	74,313
Woodstown Borough	0	0	0	0	0	110,970	7,000
Somerset County							
Bedminster Township	0	0	0	0	0	382,109	82,950
Bernards Township	3	3	3	0	0	3,690,605	1,420,843
Bernardsville Borough	0	0	0	0	0	577,758	155,895
Bound Brook Borough	0	7 *	0	0	0	124,772	181,853
Branchburg Township	0	0	0	0	0	466,378	360,113
Bridgewater Township	0	0	1	0	0	1,746,602	785,110
Far Hills Borough	0	0 *	0	0	0	29,509	9,000
Franklin Township	5	5	66	0	2,100	1,915,368	1,748,201
Green Brook Township	0	0 4	0	0	0	89,555	10,950
Hillsborough Township	21	21	0	0	0	4,161,817	355,250
Manville Borough	0	0	0	0	0	275,843	0
Millstone Borough	0	0 4	0	0	0	0	15,800
Montgomery Township	4	4	3	0	0	1,075,109	1,661,812
North Plainfield Borough	0	0 *	0	0	0	270,755	48,660

MUNICIPAL SUMMARY DATA, November 2012

AREA NAME	AUTHORIZED	AUTHORIZED	HOUSING UNITS CERTIFIED	OFFICE SPACE	RETAIL SPACE	RESI-DENTIAL (\$ AMOUNT)	NONRESI-DENTIAL (\$ AMOUNT)
	HOUSING UNITS	HOUSING UNITS (CENSUS DEFINITIONS)		AUTHORIZED BY BUILDING PERMITS	AUTHORIZED BY BUILDING PERMITS		
Peapack-Gladstone Borough	0	1 *	0	0	0	143,297	78,250
Raritan Borough	73	73	0	0	0	4,829,945	297,584
Rocky Hill Borough	0	0	0	0	0	22,400	5,000
Somerville Borough	0	0 *	0	4,335	0	168,229	725,460
South Bound Brook Boro	0	7 *	0	0	0	41,246	21,076
Warren Township	1	1	0	0	0	1,525,118	392,420
Watchung Borough	0	0 4	0	0	0	423,014	95,800
Sussex County							
Andover Borough	0	0	0	0	0	3,382	30,600
Andover Township	0	0	0	0	0	70,506	113,750
Branchville Borough	0	0	0	0	0	22,800	260,000
Byram Township	0	0 *	0	0	0	129,417	19,919
Frankford Township	0	1 *	0	0	0	684,070	7,450
Franklin Borough	0	0	0	0	0	76,635	191,725
Fredon Township	0	0	0	0	0	66,724	33,625
Green Township	0	1 *	2	0	0	1,600	129,145
Hamburg Borough	0	0	0	0	0	37,530	2,900
Hampton Township	0	0 *	0	0	0	83,615	52,800
Hardyston Township	0	0	2	0	0	264,840	758,975
Hopatcong Borough	0	1 *	2	0	0	240,358	363,900
Lafayette Township	0	0 *	0	0	0	33,700	1,500
Montague Township	0	2 *	0	0	0	25,396	18,200
Newton Town	0	0	0	0	0	111,952	202,000
Ogdensburg Borough	0	0	0	0	0	40,600	32,913
Sandyston Township	1	0	0	0	0	43,375	548,500
Sparta Township	0	2 *	1	0	0	924,360	346,910
Stanhope Borough	0	0 *	0	0	0	31,500	0
Stillwater Township	0	1 *	0	0	0	85,734	2,100
Sussex Borough	0	0	0	0	0	29,735	800
Vernon Township	0	1 *	0	7,100	0	577,743	771,100
Walpack Township	0	0 *	0	0	0	0	0
Wantage Township	0	7 *	1	0	0	160,974	196,393
Union County							
Berkeley Heights Township	2	2 *	0	0	0	1,998,798	962,054
Clark Township	0	1 *	1	0	0	652,455	1,732,540
Cranford Township	0	6 *	0	28,860	0	1,054,762	348,190
Elizabeth City	3	9 *	11	0	0	958,589	9,811,482
Fanwood Borough	0	0 *	0	0	0	225,871	10,142
Garwood Borough	0	2 *	0	0	0	116,808	67,700
Hillside Township	0	0 *	0	0	0	220,123	75,030
Kenilworth Borough	1	0	5	0	0	146,568	278,008
Linden City	1	1	2	0	0	667,052	856,676
Mountainside Borough	0	1 *	2	0	0	514,230	55,464
New Providence Borough	0	2 *	0	0	0	708,968	152,894
Plainfield City	0	0 *	0	0	0	1,850	0
Rahway City	0	0	0	0	0	684,255	403,679
Roselle Borough	0	0	0	0	0	252,766	92,550
Roselle Park Borough	0	1 *	1	0	0	342,213	45,095
Scotch Plains Township	0	5 *	0	0	0	140,008	0
Springfield Township	0	14 *	0	0	0	765,405	464,300
Summit City	2	2	0	2,204	0	4,273,430	3,235,005
Union Township	4	3	0	0	0	1,832,402	774,230
Westfield Town	3	3	0	0	0	3,016,751	469,247
Winfield Township	0	0	0	0	0	2,700	0
Warren County							

MUNICIPAL SUMMARY DATA, November 2012

AREA NAME	AUTHORIZED	AUTHORIZED		OFFICE SPACE	RETAIL SPACE		
	HOUSING	HOUSING UNITS	HOUSING	AUTHORIZED	AUTHORIZED	RESI-	NONRESI-
	UNITS	(CENSUS	UNITS	BY BUILDING	BY BUILDING	DENTIAL	DENTIAL
		DEFINITIONS)	CERTIFIED	PERMITS	PERMITS	(\$ AMOUNT)	(\$ AMOUNT)
Allamuchy Township	0	3 *	5	0	0	0	6,180
Alpha Borough	0	0	0	0	0	34,300	14,800
Belvidere Town	0	0 *	0	0	0	43,700	0
Blairstown Township	1	1	0	0	0	223,570	49,533
Franklin Township	0	1 *	0	0	0	70,212	0
Frelinghuysen Township	0	0	0	0	0	0	10,500
Greenwich Township	0	0	0	0	0	146,000	94,398
Hackettstown Town	0	2 *	0	0	0	2,800	303,741
Hardwick Township	0	0	0	0	0	24,023	0
Harmony Township	0	0	0	0	0	16,130	36,270
Hope Township	0	0	1	0	0	26,800	16,750
Independence Township	0	1 *	0	0	0	253,924	307,979
Knowlton Township	0	0	0	0	1	43,246	50,473
Liberty Township	1	1	0	0	0	203,620	7,000
Lopatcong Township	0	5 *	0	0	0	500,685	1,200
Mansfield Township	0	0	0	0	0	140,964	33,165
Oxford Township	0	0	0	0	0	13,725	35,850
Pahaquary Township	See Hardwick Twp.						
Phillipsburg Town	0	1 *	1	0	0	156,252	550,187
Pohatcong Township	0	0 *	0	0	0	49,100	47,600
Washington Borough	3	3	0	0	0	430,792	166,450
Washington Township	0	0	0	0	1	119,429	38,100
White Township	0	0	0	0	0	56,320	525,050
State Buildings	0		0	0	0	0	17,333,351

The New Jersey
CONSTRUCTION REPORTER

NOVEMBER 2012 DATA

DISTRIBUTED BY THE

New Jersey Department of
COMMUNITY AFFAIRS
DIVISION OF CODES AND STANDARDS
101 South Broad Street,
PO Box 802
Trenton, NJ 08625-0802
(609) 292-7898
www.nj.gov/dca/divisions/codes/reporter/



DEPARTMENT OF
Community
AFFAIRS

In cooperation with the
STATE DATA CENTER of the
NEW JERSEY DEPARTMENT OF LABOR AND
WORKFORCE DEVELOPMENT

Production and Distribution Staff

RICHARD BYRNE
CYNTHIA CORDERO
LYNN FERRARA
AMY FENWICK FRANK
JOHN LAGO
CHARLES PIERSON, JR.
ANTHONY SCHIAVINO
SUSAN WOIDILL

2012