

**Transitional Aid Application for Calendar Year 2013**  
**Division of Local Government Services**  
**Department of Community Affairs**

**General Instructions:** This application must be submitted in its entirety by March 15, 2013 for funding consideration under this program. Information contained in the application is subject to independent verification by DLGS. Refer to Local Finance Notice 2013-05 when preparing this application for specific instructions and definitions, and review the Submission Checklist on Page 7.

<b>Name of Municipality:</b>	Borough of Penns Grove	<b>County:</b>	Salem
<b>Contact Person:</b>	Stephen F. Labb	<b>Title:</b>	Chief Financial Officer
<b>Phone:</b>	(856) 299-0098 Ext 107	<b>Fax:</b>	(856) 299-0975
<b>E-mail:</b>	slabb@pennsgrove-nj.org		

**I. Aid History**

List amount of Transitional received for the last three years, if any:

CY 2012	CY 2011	CY 2010
\$ 563,607.00	\$ 750,000.00	\$ 1,000,000.00

**II. Aid Request for Application Year:** (All municipalities currently operating under a Transitional Aid MOU are advised that a decrease from prior year funding is likely.)

<b>Amount of aid requested for the Application Year:</b>	<b>\$ \$ 876,000.00</b>
----------------------------------------------------------	-------------------------

*If not seeking a decrease, a letter from the Mayor is required. See Local Finance Notice #*


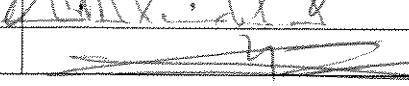
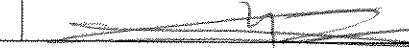
**III. Submission Requirements**

The following items must be submitted with, or prior to, submission of this application. Indicate date of submission of each.

Item	Date Submitted to DLGS
2012 Annual Financial Statement	2/14/2013
2011 Annual Audit	1/06/2012
2011 Corrective Action Plan	1/07/2013
Application Year Introduced Budget	3/14/2013
Budget Documentation Submitted to Governing Body	2/26/2013

**IV. Application Certification**

The undersigned herewith certify that they have reviewed this application and, to the best of their ability, find its contents to be true and that it accurately portrays the circumstances regarding the municipality's fiscal practices and need for financial assistance. By submitting the application, the municipality acknowledges that the law provides that the decision of the Director regarding aid awards is final and not subject to appeal.

Official	Signature	Date
Mayor/Chief Executive Officer		3/14/13
Governing Body Presiding Officer		3/14/13
Chief Financial Officer		3/14/13

**V-A. Explanation of Need for Transitional Aid**

Explain the circumstances that require the need for Transitional Aid in narrative form. Include factors that result in a constrained ability to raise sufficient revenues to meet budgetary requirements, and if such revenues were raised, how it would substantially jeopardize the fiscal integrity of the municipality. If this application is being submitted due solely to expenditure and revenue impacts of Superstorm Sandy, please skip this section.

The following factors, which exist in the Borough of Penns Grove justify the need of awarding Transitional Aid in 2013, these are continuing conditions as mentioned in prior applications which are updated. Mayor and Council are still hopeful that a developer will see the potential of the River Walk Project Council continues to take steps in reducing costs without major impact to services.

1. The effect of high percentage of properties that are non-ratables on the size of a Municipality that is less than one square mile.
2. The effect of subsidized public housing on the Borough's tax base.

**FACTOR 1:**

It is difficult to offset revenue decreases or budget increases in the Borough of Penns Grove. The Borough of Penns Grove is less than one square mile in total area. Based on the Demographics and Social Economic Characteristics of the 2010 Census, Per capita income of the past 12 months is \$ 16,132.00; Medium household income is \$ 25,867.00; Persons below Poverty are 1,441, which is 28% of the population. Current Unemployment rate is 11.90%, estimated Job Growth is -6.26%, Home Appreciation is -2.87% as the data suggest, the Borough of Penns Grove qualifies as distressed. The only viable land for development is the Riverfront. Mayor and Council are hoping to attract the "right developer", for the Riverfront. Even though there have been many setbacks with prior Developers the goal is to move forward. There is an ongoing effort for the Municipality to be self sufficient, but currently we need the State's support in order to achieve this goal. **The Municipality will not be able to sustain a 30 cent increase in Local Purpose Tax, if additional aid is not received.**

The Borough also suffers from a high percentage of properties, which are non-ratables. It is estimated that 34% of the total value of land and improvement (property), within the Borough of Penns Grove are non-taxable. Here again is a list of those properties:

## a. Government Institutions:

1. The Penns Grove – Carneys Point School District Office.
2. The Penns Grove – Carneys Point Middle School.
3. The Penns Grove – Carneys Point Carleton School.
4. The Salem County Social Services main office.
5. The Borough Hall.
6. The Ambulance and Fire Department buildings.
7. The Public Works Department building.

## b. Non-profit Organizations and Clubs:

1. The Washington Club.
2. The Citizens' League.
3. Two separate Elk Lodge facilities.
4. The American Legion.
5. The Puerto Rican Action Committee.
6. Howard Avenue Mental Health Facility Halfway House.

The Penns Grove – Carneys Point Historical Society Headquarters. This is the most recent non-profit organization, which acquired a former ratable and transferred it into a non-ratable. The property was formally a commercial bank, which unfortunately closed. Although the Borough of Penns Grove supports the efforts of the Historical Society, it is hard to accept the fact that the acquisition of this building, by a tax exempt organization is in a key commercial section of our town. The loss of such a well maintained structure eliminates the Borough's opportunity to secure a commercial ratable.

\*Formed in 2003.

## c. Churches:

The Borough of Penns Grove presently has eleven (10) active churches within it's' boundaries as well as a large community center, all of which are exempt from taxes. The Borough surely does not object to having these religious institutions within it's' boundaries, but includes them to give a clear picture of just how severe the non-ratable situation is for the Borough.

In summary, when considering the size of the Borough of Penns Grove, and review the number of non-ratable properties that exist, there is a tremendous burden placed on the tax payers. Not only does the Borough have these exempt facilities within it's' boundaries, but in many cases, provides additional services and support without any financial contribution.

**FACTOR 2:**

Penns Grove continues to host an excessive number of subsidized housing units. Penns Grove, although being less than one square mile, has within its' boundaries, five subsidized low-income housing facilities. These facilities are Penn Village Apartments, Silver Run Apartments, Mallard Park Apartments, the Penn Towers Senior Citizens Complex and Penns Grove Gardens. These facilities have a total of 448 units. The owners of these facilities are all receiving funding from the federal government, none of which are passed on to the Borough of Penns Grove. These facilities place a financial strain on the Borough's limited resources.

**Example 1:** The Penns Grove Housing Authority, which includes the Silver Run Apartments and the Penn Towers Senior Citizens facility, are assessed at **\$9,803,300.00**. The Authority made a payment in Lieu of Tax in the amount of **\$ 9,586.00** in 2012. Both facilities have a combined total of 190 units, which represents a breakdown of **\$ 50.45** per unit.

**Example 2:** Penn Village Apartments, which has an assessed value of \$7,297,000.00, provides a payment in lieu of taxes to the Borough in the amount of \$42,500.00 per year. This payment does not in any way reflect the amount of attention that this facility receives by way of police calls, municipal court and other services.

**Example 3:** Mallard Park Apartments is a subsidized housing facility, with assessed value of \$1,165,800.00. The revenue received does not offset the cost associated with this property.

Subsidized Housing grossly underpays its' fair share of property taxes. In 2012, a Penns Grove homeowner with an average assessment of **\$111,239.00** paid **\$1,616.57** in local property taxes. Compare this with one of the subsidized housing complexes in the Borough of Penns Grove. The Penns Grove Housing Authority, a **\$ 9,586.00** payment to the Municipality, despite the fact that they have over 190 apartment units in the Borough of Penns Grove. As has been stated previously, the complexes place a much greater demand on the services provided by the Borough, particularly the Police Department. The average per unit payment for an apartment unit in one of the subsidized housing complexes is shown below:

- Penns Grove Housing Authority – Payment in Lieu, \$ 50.45 per unit.
- The Penn Village Apartments –Payment in Lieu, \$354.17 per unit.
- Mallard Park –\$ 1,306.42 in taxes per unit.

The Social Economic factors, which result from this, place a burden on the budget. We have a police budget for 2013 in the amount of \$1,557,309.00. In addition to the cost Health Insurance in the amount of \$ 812,527.57, this includes \$ 396,913.34 in payment for retiree's and officers retired on disability. The grand total for the Police Department is \$2,369,836.27. This amount represents over 39% of the entire budget for the Borough of Penns Grove.

This is a constant situation and is why we must mention it in every Aid Application until the RiverWalk Project or shared police services are completed, which will help off-set subsidized housing.

**V-B. Alternate Eligibility**

If this application is being submitted due solely to expenditure and revenue impacts of Superstorm Sandy, please skip this section.


**Demonstration of Revenue Loss/Substantial Cost Increase**

Complete Part 2 if eligibility was not met in Part 1. Show: (1) specific, extraordinary revenue losses, but not as the aggregate of many revenue line items; and (2) specific, extraordinary increases in appropriations, but not as the aggregate of many appropriation line items. Describe the item on the cell below each entry. If applicable, indicate in the description of the extraordinary increase in expenditure if the increase was the result of a policy decision made by the municipality (i.e. a back-loaded debt service schedule, deferred payment, costs associated with additional hires, etc.)

Revenue or Appropriation	2012 Value	2013 Value	Amount of Loss/Increase
<b>Description:</b> Decrease in Surplus	\$ 313,000.00	\$ 135,000.00	\$ 178,000.00
<b>Description:</b> Inter Funds Receivable	\$ 164,000.00		
<b>Description:</b> Anticipated Decrease in Transitional Aid	\$ 600,000.00	\$ 450,000.00	\$ 150,000.00
<b>Description:</b>			
<b>Description:</b>			
<b>Description:</b>			
<b>Description:</b>			

**V-C. Actions to Reduce Future Need for Aid**

Detail the steps the municipality is taking to reduce the need for aid in the future. Include details about long-term cost cutting and enhanced revenue plans, impact of new development, potential for grants to offset costs, and estimated short and long-term annual savings. Use additional pages if necessary. (Items included in a Transition Plan submitted by a current recipient need not be repeated here.) If this application is being submitted due solely to expenditure and revenue impacts of Superstorm Sandy, please skip this section.

**In working with the Municipal Benefits Broker for 2013, the Municipality is able to anticipate a \$ 41,575.20 reduction in Health Benefits costs from March 1, 2013 to February 29, 2014. This is the second consecutive year that the Municipality realized a reduction in health benefits. The Police Committee will negotiate with the unions for additional savings in Health Benefits, which can be accomplished through a sidebar agreement. The Borough's Horizon Plan is as cost effective as the State Plan.**

**Mayor and Council are disappointed with the stalled negotiations with Carneys Point concerning police services in 2012. To renew the discussions, Mayor John Washington forwarded a letter, to the new Mayor of Carneys Point Township requesting continued talks concerning shared services for the Police Department. (\*see copy of attached correspondence). Hopefully, this will open a meaningful dialogue that will benefit both communities.**

**On March 8, 2013, Borough Officials met with County Officials and State Representative to discuss County Wide Dispatching Services. Though it was an initial meeting, ground work was set for additional meetings. The goal of County Wide Dispatching is to provide more efficient services while providing a saving to the taxpayers.**

**As stated in prior applications, Borough officials are still trying to facilitate economic revitalization through the Riverwalk project. There has been a constant emphasis for riverfront development that has been hampered by prior developers and the economy. Officials are aware that the Municipalities' goal of becoming self sufficient hinges on the only major area that can generate ratable, jobs and an infusion of economic growth. This is the corner stone to the restoration of Penns Grove.**

**V-D. Discussion of Health Benefits**

If this application is being submitted due solely to expenditure and revenue impacts of Superstorm Sandy, please skip this section.

1. Identify the company that is the broker of record for health insurance and how long have they served as broker of record?

Conner Strong & Buckelew Companies, Inc. are the broker of record for health insurance. The company has served as broker of record for over 20 years.

2. How much in commissions or fees does the broker of record receive from: (a) the municipality \$ N/A; and (b) the insurance company providing health benefits 3.69% for Medical and 3.46% for RX.

3. As an attachment, have the broker list the provided coverage, and the categories and number of employees in each program. Create a side by side comparison with the State Health Benefits Plan and outline costs. **(see attached)**

4. Provide a clear and concise explanation as to why the State Health Benefits Plan is not being used and discuss the relative costs of insurance used and the State Health Benefits Plan. (It is advisable for you to share this question with your broker of record and have them fill it out.)

Comparing the State cost to the proposed Horizon cost and factoring in Medicare costs as the State requires Parts A & B of Medicare, the Borough of Penns Grove is saving an estimated \$ **21,256.00** by not converting over to the State Plan.

Second, from a provider disruption basis, only 66% of current providers being used by Borough employees participate with the State plan. Our experience is 85% participation deemed acceptable to avoid arbitration issues.

Third, the Borough of Penns Grove has Traditional and PPO plans that are greater in benefit as compared to the State plan, therefore, "equal to or better than" provisions of collective bargaining would be a contractual issue.

## VI. Historical Fiscal Statistics

Item	2011	2012	Introduced Application Year
<b>1. Property Tax/Budget Information</b>			
Municipal tax rate	\$ 1.418	\$ 1.453	\$ 1.753
Municipal Purposes tax levy	\$ 2,537,772.98	\$ 2,604,210.46	\$ 3,110,671.11
Municipal Open Space tax levy	\$ .00	\$ .00	\$ .00
Total general appropriations	\$ 6,300,021.43	\$ 6,016,608.51	\$ 6,037,968.86

<b>2. Cash Status Information</b>			
% Of current taxes collected	90.91%	90.07%	%
% Used in computation of reserve	90.80%	90.86%	.90%
Reserve for uncollected taxes	\$ 579,147.98	\$ 587,995.44	\$ 698,467.11
Total year end cash surplus	\$ 315,202.14	\$ 139,449.85	
Total non-cash surplus	\$ 844.92	\$ .00	
Year end deferred charges	\$ 84,000.00	\$ 42,000.00	

<b>3. Assessment Data</b>			
Assessed value (as of 7/1)	\$ 178,905,801	\$ 179,199,850	\$ 177,457,600
Average Residential Assessment	\$ 111,241	\$ 111,239	\$ 110,900
Number of tax appeals granted	9	4	
Amount budgeted for tax appeals	\$ 0	\$ 0	\$ 0
Refunding bonds for tax appeals	\$ 0	\$ 0	\$ 0

<b>4. Full time Staffing Levels</b>			
Uniformed Police - Staff Number	28	14 FT Police, 4 FT Dispt, 2PT Dispt.1 PT Clerk,, 2 Crossing Guard.	14 FT Police, 4 FT Dispt, 2PT Dispt.1 PT Clerk,, 2 Crossing Guard.
Total S&W Expenditures	\$ 1,483,037.40	\$ 1,457,420.45	\$ 1,479,309.00
Uniformed Fire - Staff Number	N/A	N/A	N/A
Total S&W Expenditures	\$ N/A	\$ N/A	\$ N/A
All Other Employees - Staff Number	43	25	25
Total S&W Expenditures	\$ 541,853.59	\$ 386,797.15	\$ 417,494.00

### 5. Impact of Proposed Tax Levy

			Amount
Current Year Taxable Value			177,457,600
Introduced Tax Levy			\$ 3,110,671.11
Proposed Municipal Tax Rate	1.753	Average Res. Value ( #4 above)	110,900.00
Current Year Taxes on Average Residential Value (#4 above)			1,943.98
Prior Year Taxes on Average Residential Value			1,616.53
Proposed Increase in average residential taxes			327.45



**VII. Application Year Budget Information**

A. Year of latest revaluation/reassessment

2009
------

B. Proposed Budget – Appropriation Cap Information

Item	Yes	No
1. Was an appropriation cap index rate ordinance adopted last year? If YES: % that was used	X	
3.50%		
2. Amount of appropriation cap bank available going into this year		
\$363,571.38		
3. Is the Application Year budget at (appropriation) cap? If NO, amount of remaining balance		X
\$602,999.03		
4. Does the Application Year anticipate use of a waiver to exceed the appropriation cap? If YES, amount:		X
\$		

C. List the five largest item appropriation increases:

Appropriation	Prior Year Actual	Application Year Proposed	\$ Amount of Increase
Reserve for Uncollected Taxes	\$ 587,995.44	\$ 698,467.11	\$ 110,471.67
Municipal Clerk Other Expenses	\$ 24,650.00	\$ 44,650.00	\$ 20,000.00
Inter Local Service Agreement Public Works	\$512,682.00	\$ 528,274.00	\$ 15,592.00
Other Insurance Plans	\$ 417,090.00	\$431,000.00	\$ 13,910.00
Inter Local Service Agreement Revenue Administration (Tax Collection)	\$ 46,735.00	\$ 49,144.00	\$ 2,409.00

D. List all new property tax funded full-time positions planned in the Application Year:

Department/Agency	Position	Number	Dollar Amount
	N/A		

E. Display projected tax levies, local revenues (not grants), anticipated (gradually reduced) Transitional Aid, total salary and wages, and total other expenses projected for the three post-application years:

	Tax Levy	Local Revenues	Transitional Aid	Total S&W	Total OE
<b>First year</b>					
<b>Second year</b>					
<b>Third year</b>					

**\* As stated in prior applications, significant reduction in Aid cannot be realized until Police Services Consolidation or RiverFront Development.**

**VIII. Financial Practices**

A. Expenditure controls and practices:

Question	Yes	No
1. Is an encumbrance system used for the current fund?	X	
2. Is an encumbrance system used for other funds?	X	
3. Is a general ledger maintained for the current fund?	X	
4. Is a general ledger maintained for other funds?		X
5. Are financial activities largely automated?	X	
6. Does the municipality operate the general public assistance program?		X
7. Are expenditures controlled centrally (Yes) or de-centrally by dept. (No)?	X	
8. At any point during the year are expenditures routinely frozen?	X	
9. Has the municipality adopted a cash management plan?	X	
10. Have all negative findings in the prior year's audit report been corrected?		X
If No, list those uncorrected as an appendix.		X

B. Risk Management: Indicate ("x") how each type of risk is insured.

Coverage	JIF/HIF	Self	Commercial
General liability	X		
Vehicle/Fleet liability	X		
Workers Compensation	X		
Property Coverage	X		
Public Official Liability	X		
Employment Practices Liability	X		
Environmental	X		
Health	SHBP		X

C. 1) Salary and Employee Contract Information (when more than one bargaining unit for each category, use average):

Question	Police	Fire	Other Contract	Non-Contract
Year of last salary increase	2013	N/A	Dispatchers 2012	2009 Non-Cont. 2011 Statutory
Average percentage increase	2%	N/A %	2%	2%
Last contract settlement date	2011		2010	
Contract expiration date	2013	N/A	2012	

2) Explain if any of the following actions have been taken or are under consideration for the Application Year:

Action	Police	Fire	Other Contract	Non-Contract
Furloughs (describe below)				
Significant amounts for one time savings from the Police Department would have to be negotiated.				
Wage Freezes (describe below)				
Wage Freezes are in effect, only contracted employees are receiving raises until the Contract Expires				
Layoffs (describe below)				

<b>Application Year: CY 2013</b>	<b>Municipality: Borough of Penns Grove</b>	<b>County: Salem</b>
----------------------------------	---------------------------------------------	----------------------

D. Tax Enforcement Practices:

Question	Yes	No
1. Does the municipality use the accelerated tax sale program?		X
2. When was the last foreclosure action taken or tax assignment sale held: Date:	2/20/08. On 2/07/13 letters were sent to the property owners of tax sale certificates with intent to foreclose, as of date two were redeemed.	
3. On what dates were tax delinquency notices sent out in 2012: Date:	2/15,6/8,8/17,12/7	
4. Date of last tax sale: Date:	4/19/12	

E. Specialized Service Delivery:

If the answer to either question is "Yes," provide (as an appendix) a cost justification of maintaining the service without changes.

Service	Yes	No
Sworn police or firefighters are used to handle emergency service call-taking and dispatch (in lieu of civilians)		X
The municipality provides rear-yard solid waste collection through the budget		X

F. Other Financial Practices

1. Amount of interest on investment earned in:

2011	\$ 2,532.06	2012:	\$ 2,263.11	Anticipated Application Year:	\$ 2,000.00
------	-------------	-------	-------------	-------------------------------	-------------

2. List the instruments in which idle funds are invested:

Various Operating and Trust Checking Accounts	
3. What was the average return on investments during CY 2012?	.27 %
4. When was the last time fee schedules were reviewed and updated?	Construction Code Fees effective increase for fees and permits 9/02/2012
5. The name and firm of the municipality's auditor?	Bowman and Company
6. When was the last time the municipality changed auditors?	2006

G. Status of Collective Negotiation (Labor) Agreements: List each labor agreement by employee group, contract expiration date, and the status of negotiations of expired contracts.

Employee Group	Expiration Date	Status of Negotiations of Expired Agreement
Penns Grove Police Association	2013	
Penns Grove Police Dispatchers	2012	Offering 0% increase and some modifications of health insurance for additional savings.
Penns Grove Police Chief	2010	Working under a contract that was not signed.

**IX-A. List actions that limited Salary and Wage costs: i.e., layoffs, furloughs, freezes, contract concessions, etc.  
(See item C-3 in Local Finance Notice for details)**

S&W Line Item	Prior Year Actual	Application Year Proposed	Explanation of Change
			Currently negotiating with the Dispatchers for 0% increase and health insurance modifications.

**IX-B. List actions that limited or reduced Other Expense costs: i.e., reductions, changes, or elimination of services, procurement efficiencies or restraint. Include changes in spending policies that reduce non-essential spending.**

Line Item	Prior Year Actual	Application Year Proposed	Explanation of Change
Group Health Insurance	\$958,409.00	\$880,401.00	Reduction in Premiums

**IX-C. Evaluate existing local revenues, as to whether or not the rates or collections can be increased or imposed, and if so, how changes will be implemented; i.e., recreation fees, utility fees, land use fees, construction, housing, and fire code.**

Local Revenues and services provided though the General/Current Fund	Check if services is provided	Are fees charged to cover the costs of the program?	If fees do not cover costs, what is the amount of subsidy?	If there is a subsidy, explain why fees cannot be increased to reduce or eliminate subsidy.
Recreation programs	<input checked="" type="checkbox"/>	No		Due to Social Economical Conditions, Council believes that in providing program helps curb mischief.
Sewer Fees	<input type="checkbox"/>			
Water Fees	<input type="checkbox"/>			
Swimming Pool	<input type="checkbox"/>			
Uniform Construction Code	<input checked="" type="checkbox"/>	Implementation date was 9/2/2012		Construction Code fees for various permits and applications were increased to the maximum sum.
Uniform Fire Code	<input type="checkbox"/>			
Land Use Fees	<input checked="" type="checkbox"/>	No		Fees were last updated in 2008 to help defray cost.
Parking Fees	<input type="checkbox"/>			
Beach Fees	<input type="checkbox"/>			
Insert other local fees below:	<input checked="" type="checkbox"/>			
Land Lord License Fee (Other Construction Code Functions		Yes		

**X. Service Delivery**

List all services that the municipality contracts to another organization: i.e., shared services with another government agency, including formal and informal shared services, memberships in cooperative purchasing program, private (commercial), or non-profit organization.

Service	Name of Contracted Entity	Estimated Amount of Contract	Year Last Negotiated (as applicable)
<b>Inter Local Service Agreement-Revenue Administration</b>	<b>Carneys Point Township</b>		<b>2011</b>
<b>Inter Local Service Agreement-Public Work Functions: Includes Trash Collecting, Disposal , Storm Water Management, Recycling and Public Work Functions</b>	<b>Carneys Point Township</b>		<b>2012</b>
<b>Senior Transportation</b>	<b>Salem County</b>		<b>2013</b>

**Section XI – Impact of Limited or No Aid Award**

Describe in complete detail the impact if aid is not granted for the current fiscal year; **this priority setting requires that the municipality will maintain a minimum level of essential services.** List the appropriate category of impact if the aid is not received. Rank each item from both lists as to the order in which elimination will take place. If across the board cuts will be made, indicate under service. **For rank order purposes, consider the two sections as one list. The cuts outlined here are one that the municipality is committing to make if they do not receive aid.**

Rank Order	Department	# of Layoffs	Effective Date	2012 Full Time Staffing	2013 Full Time Staffing	\$ Amount to be Saved
1	Police Department, even though the Department is under staffed, the number of cuts will depend on the Aid Award, the Police Budget accounts for 39% of the Municipal Budget.					
2	General Government., in prior years budgets General Government personnel have been cut thorough layoff. Other positions have been reduced to part-time. The Governing Body will look into additional cuts depending on the Aid Award					

If services will be reduced, describe the service, impact and cost savings associated with it.

Rank Order	Service	Cost Savings	Impact on Services
1	Police Services		Possibility half of the under staff department terminated, will have a disastrous effect on Police Services
2	General Government		Depending on what additional positions will be cut affects the services provided by the already minimum staffing.



## **Section XII – SPECIAL SECTION FOR APPLICANTS FILING DUE TO IMPACTS OF SUPERSTORM SANDY**

**Attach a copy of any application filed with FEMA to receive assistance pursuant to the Community Disaster Loan Program. Explain why the funding sought through that program is insufficient to address budget needs.**

**Explain the loss of tax ratables due to Sandy and the impact of this tax ratable loss on remaining properties. Attach related disclosure statements issued in conjunction with notes/debt, Assessor documentation of reassessments filed pursuant to guidelines issued by the Division of Taxation, and any other documents that explain taxable ratable losses. Do not include other losses of ratables such as tax appeals unrelated to Sandy.**

**Explain the loss of other revenues (beach fees, parking revenues, court fines etc.) attributable to the impacts of Sandy.**

**Explain in detail, all claims and applications your municipality has filed with FEMA, insurance companies and third parties. Provide a good faith estimate of how much in funding you expect to receive. Detail any cost share that your municipality believes it will have to be responsible for paying, including an assessment as to whether those costs are being financed. Please provide any relevant supporting documents.**

**XII. Agreement to Improve Financial Position of Municipality**

If aid is granted, the municipality will be required to submit to certain reporting conditions and oversight as authorized by law and a Memorandum of Understanding will need to be signed. Please mark each box below indicating that the applicant understands, and agrees to comply with these broad reporting and oversight provisions.

	Yes	No
1. Allow the Director of Local Government Services to assign management, financial, and operational specialists to assess your municipal operations.	X	
2. Implement actions directed by the Director to address the findings of Division staff.	X	
3. Enter into a Memorandum of Understanding and comply with all its provisions, without exception.	X	

**XIII. Certification of Past Compliance for Municipalities Currently Operating Under a Transitional Aid MOU:**

The undersigned certify that the municipality is in substantial compliance with the conditions and requirements of the 2012 MOU and is moving in good faith to correct those area of noncompliance that have been identified, including, but not limited to, the following: establishment of a pay to play ordinance; termination of longevity pay for officers and employees not contractually entitled to longevity pay; termination of health benefits for part time officers and employees; receipt of signed approval forms as required prior to hiring personnel and contracting with professional service vendors.

Mayor: John A. Washington Date: 3/14/13

Chief Financial Officer: [Signature] Date: 3/14/13

Chief Administrative Officer: \_\_\_\_\_ Date: \_\_\_\_\_

**XIV. CAMPS Certification (County and Municipal Personnel System - Civil Service municipalities only)**

For Civil Service municipalities, the undersigned, being knowledgeable thereof, hereby certify that the municipality has placed the names of all current civil service employees in NJ "CAMPS".

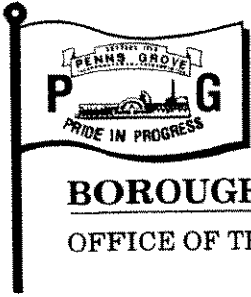
Human Resources or Personnel Director: \_\_\_\_\_ Date: \_\_\_\_\_

Chief Financial Officer: \_\_\_\_\_ Date: \_\_\_\_\_

**XV. CERTIFICATION OF APPLICATION FOR TRANSITIONAL AID**

The undersigned acknowledges the foregoing requirements with which the municipality must comply in order to receive aid as outlined above. In addition, included with this application is a copy (printed or electronic) of the budget documentation that supports the budget calculation that was provided to the governing body.

Mayor: *John A. Washington* Date: 3/14/13  
Chief Financial Officer: *[Signature]* Date: 3/14/13  
Chief Administrative Officer: \_\_\_\_\_ Date: \_\_\_\_\_



## BOROUGH OF PENNS GROVE

OFFICE OF THE MAYOR

West Main & State Street  
P.O. Box 527  
Penns Grove, NJ 08069

February 13, 2013

Mayor Richard Gatanis  
Carneys Point Township  
303 Harding Highway  
Carneys Point, NJ 08069

RE: Shared Service for Policing

Dear Mayor Gatanis:

As we all begin the budgetary process for 2013, we recognize the importance of reducing costs and alleviating the burden on the taxpayer. Shared services between municipalities and other governmental entities have the potential to provide a great opportunity for financial savings for all parties involved. As the Mayor of Penns Grove, and on behalf of the Borough Council, I respectfully request Carneys Point and Penns Grove reconvene discussions regarding the shared service of police services. If you and the Township Committee would also like to continue discussions on this topic, please respond at your earliest convenience so that a meeting may be scheduled.

If you have any questions regarding this matter, please do not hesitate to contact me.

Respectfully,

John A. Washington, Mayor  
Borough of Penns Grove

Cc: June Profit, Carneys Point Township Clerk  
Sharon Williams, Penns Grove Borough Clerk

## APPENDIX - VIII. FINANCIAL PRACTICES

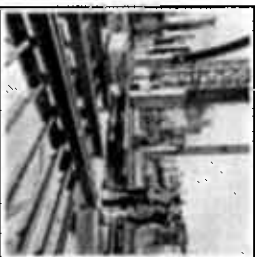
The following are uncorrected prior year's audit findings:

1. **Finding No. 2010-01:** The Borough did not obtain actuarial valuation of its Other Post Employment Benefits (OPEB) required for footnote disclosure. For CY 2010, the Borough provided its employees and retirees, health insurance coverage through Horizon Blue Cross and Blue Shield of New Jersey.
2. **Finding No. 2010-004:** A general fixed asset accounting system was not properly Maintained for the year 2010.

*An Employee Benefits Renewal Analysis*  
*presented to the*

**Borough of Penns Grove**

Presented by:  
**Scott Davenport**  
**RHU, REBC, GBA, CEBS**

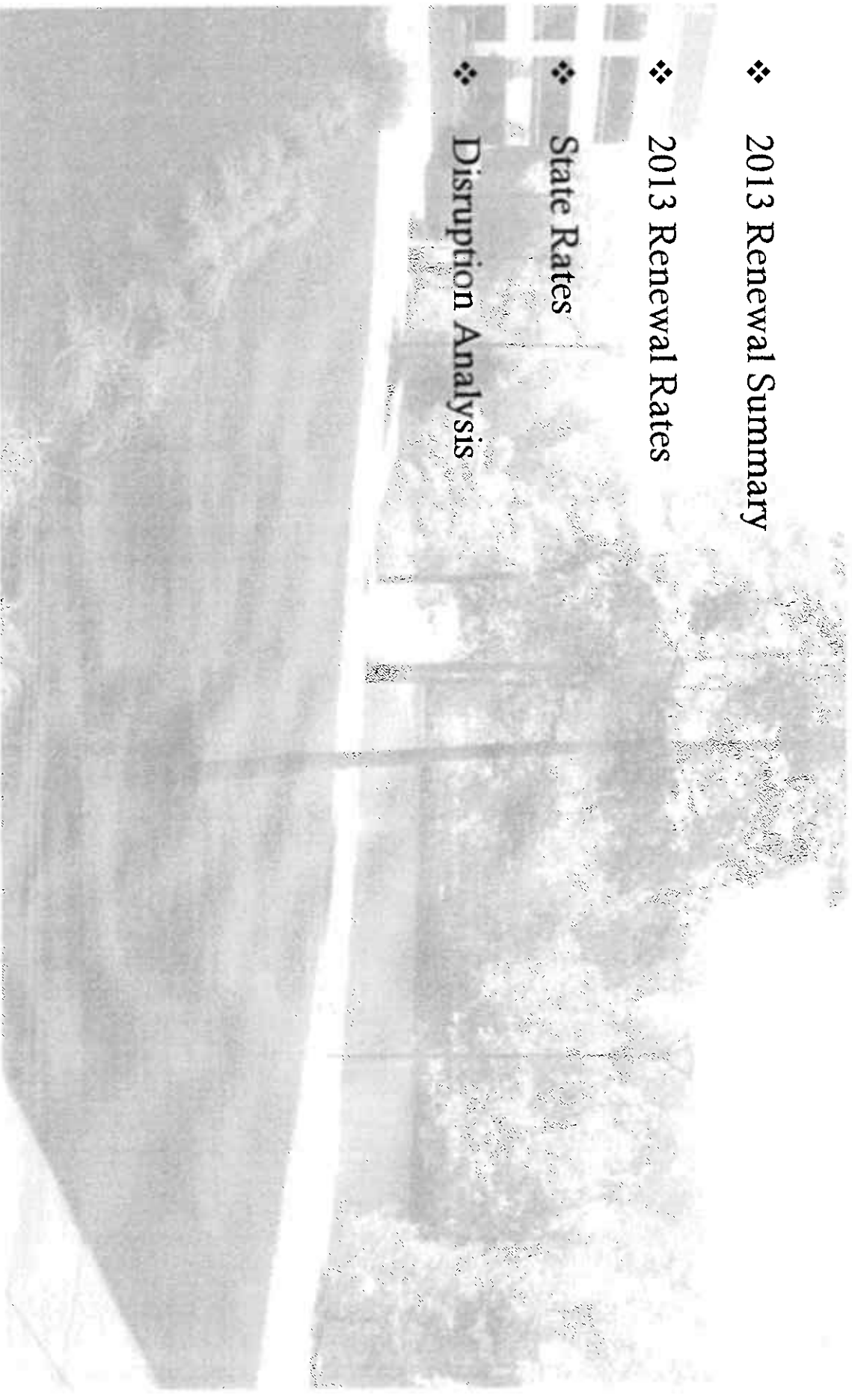


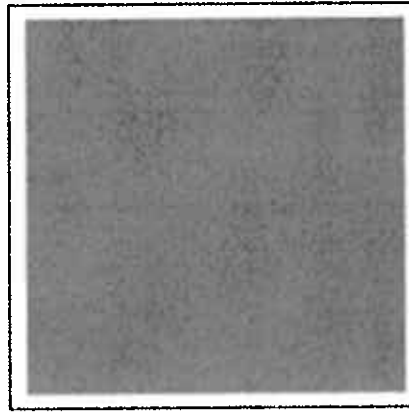
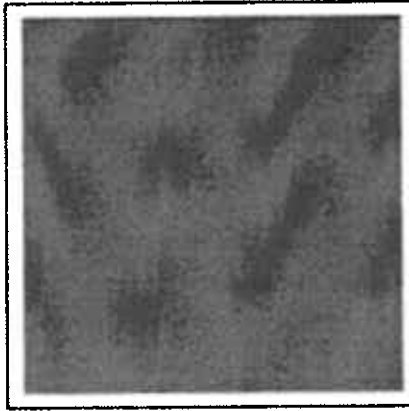
January 24, 2013

**CONFIDENTIAL**

# Schedule of Exhibits

- ❖ 2013 Renewal Summary
- ❖ 2013 Renewal Rates
- ❖ State Rates
- ❖ Disruption Analysis



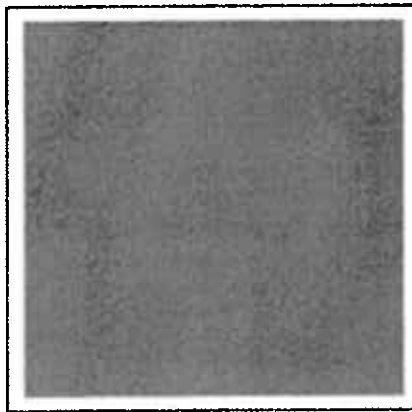


**2013 Renewal Summary**  
*Borough of Penns Grove*



# 2013 Renewal Summary

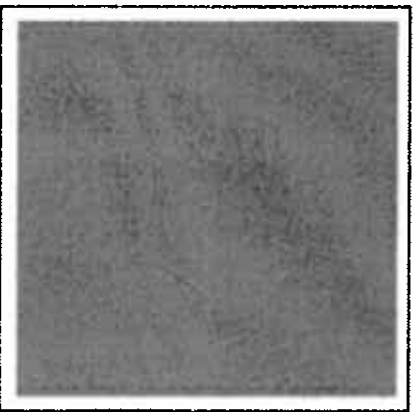
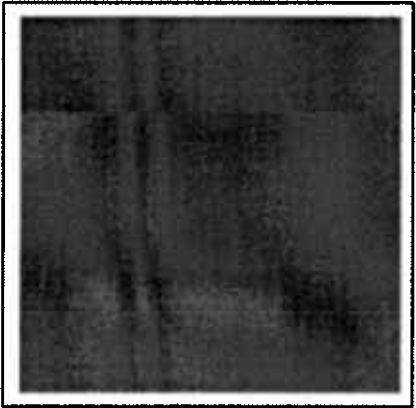
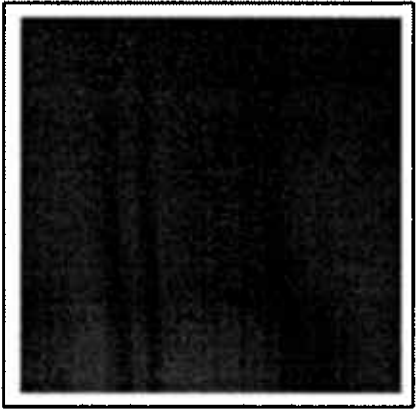
<b>Horizon Renewal 3/01/2013 – 2/28/2014</b> <ul style="list-style-type: none"> <li>• 5% reduction to Current</li> </ul>		\$789,921.24
<b>State Plan 3/01/2013 – 2/28/2014</b> <ul style="list-style-type: none"> <li>• Horizon rates used for State (Aetna rates higher)</li> <li>• Rates increased 9.1% for January, February 2014</li> </ul>		\$811,177.80
<b>Disruption Analysis (State)</b> <ul style="list-style-type: none"> <li>• 85% considered acceptable</li> </ul>		66% Match
<b>Current Options</b>		
Convert Rx to Current Police Rx		\$11,082.96 Savings
Convert Medical to Current Police Medical		\$15,526.20 Savings
Convert Rx from \$7/\$20-\$7/\$20 to \$7/\$30-\$7/\$30		\$20,000.00 Savings



**2013 Renewal Rates**  
*Borough of Penns Grove*

# 2013 Renewal Rates

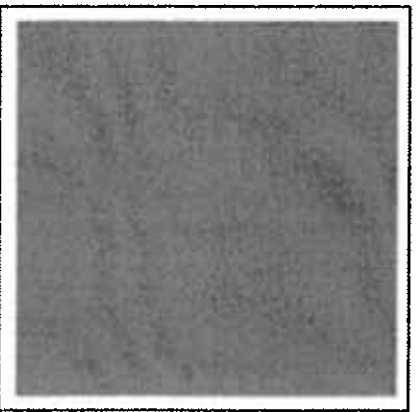
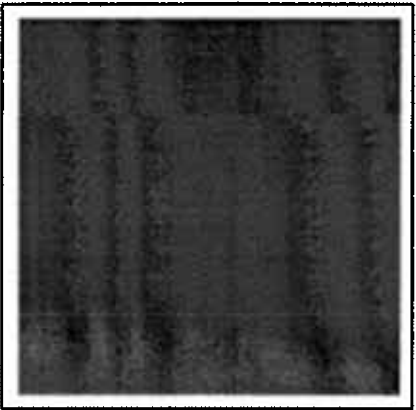
	Horizon 05		Horizon 01		Horizon 04		Horizon 03	
	Current	Renewal	Current	Renewal	Current	Renewal	Current	Renewal
<b>Monthly Rates:</b>								
Single	\$885.08	\$840.83	\$924.95	\$878.71	\$715.82	\$680.03	\$1,005.72	\$955.44
Parent/Child	\$1,363.43	\$1,295.25	\$1,421.62	\$1,350.53	\$1,232.66	\$1,171.03	\$1,556.11	\$1,478.31
Husband/Wife	\$1,918.84	\$1,822.89	\$2,005.81	\$1,905.52	\$1,462.20	\$1,389.09	\$2,177.13	\$2,068.27
Family	\$2,323.59	\$2,207.41	\$2,425.27	\$2,304.01	\$1,964.61	\$1,866.38	\$2,632.62	\$2,500.99
Single - Medicare Eligible	\$597.50	\$567.63	\$0.00	\$0.00	\$0.00	\$0.00	\$0.00	\$0.00
Husband/Wife - Medicare Eligible	\$0.00	\$0.00	\$0.00	\$0.00	\$0.00	\$0.00	\$1,406.29	\$1,335.97
Family - Medicare Eligible	\$0.00	\$0.00	\$0.00	\$0.00	\$0.00	\$0.00	\$1,930.24	\$1,833.73
<b>No. in Class:</b>								
Single	4	4	1	1	3	3	1	1
Parent/Child	1	1	2	2	0	0	1	1
Husband/Wife	4	4	0	0	0	0	1	1
Family	14	14	2	2	0	0	0	0
Single - Medicare Eligible	1	1	0	0	0	0	0	0
Husband/Wife - Medicare Eligible	0	0	0	0	0	0	3	3
Family - Medicare Eligible	0	0	0	0	0	0	2	2
<b>Monthly Premiums:</b>								
Single	\$3,540.32	\$3,363.32	\$924.95	\$878.71	\$2,147.46	\$2,040.09	\$1,005.72	\$955.44
Parent/Child	\$1,363.43	\$1,295.25	\$2,843.24	\$2,701.06	\$0.00	\$0.00	\$1,556.11	\$1,478.31
Husband/Wife	\$7,675.36	\$7,291.56	\$0.00	\$0.00	\$0.00	\$0.00	\$2,177.13	\$2,068.27
Family	\$32,530.26	\$30,903.74	\$4,850.54	\$4,608.02	\$0.00	\$0.00	\$0.00	\$0.00
Single - Medicare Eligible	\$597.50	\$567.63	\$0.00	\$0.00	\$0.00	\$0.00	\$0.00	\$0.00
Husband/Wife - Medicare Eligible	\$0.00	\$0.00	\$0.00	\$0.00	\$0.00	\$0.00	\$4,218.87	\$4,007.91
Family - Medicare Eligible	\$0.00	\$0.00	\$0.00	\$0.00	\$0.00	\$0.00	\$3,860.48	\$3,667.46
<b>Total Monthly Premium</b>	\$46,798.87	\$43,431.50	\$6,818.73	\$6,187.79	\$2,147.46	\$2,040.09	\$12,818.31	\$12,177.39
<b>Total Annual Premium</b>	\$548,482.44	\$521,098.00	\$103,424.76	\$98,253.48	\$25,769.52	\$24,481.08	\$153,819.72	\$146,128.68
<b>Total CURRENT Annual Premium</b>	\$831,496.44							
<b>Total RENEWAL Annual Premium</b>	\$789,921.34							
<b>\$ Decrease</b>	-\$41,575.20							



**State Plan Rates**  
*Borough of Penns Grove*

# State Plan Rates

	Active		Retirees	
	3/1/2013 - 12/31/2013	1/01/2014 - 2/28/2014	3/1/2013 - 12/31/2013	1/01/2014 - 2/28/2014
<b>Rates:</b>				
Single	\$856.73	\$934.69	\$479.41	\$523.04
P/C	\$1,285.10	\$1,402.04	\$1,092.29	\$1,191.69
H/W	\$1,713.46	\$1,669.38	\$759.06	\$828.13
Family	\$2,141.84	\$2,336.75	\$1,529.23	\$1,668.39
<b>Enrollment</b>				
Single	5	5	\$958.83	\$1,046.08
P/C	2	2	\$1,556.45	\$1,698.09
H/W	3	3	\$2,381.27	\$2,597.97
Family	12	12	\$1,243.25	\$1,356.39
<b>Monthly Premium:</b>				
Single	\$4,283.65	\$4,673.45	\$2,708.95	\$2,955.46
P/C	\$2,570.20	\$2,804.08	4	4
H/W	\$5,140.38	\$5,608.14	1	1
Family	\$25,702.08	\$28,041.00	0	0
			2	2
			2	2
			2	2
			1	1
			2	2
			0	0
			2	2
			4	4
			\$1,917.64	\$2,092.16
			\$1,092.29	\$1,191.69
			\$0.00	\$0.00
			\$3,058.46	\$3,336.78
			\$1,917.66	\$2,092.16
			\$1,556.45	\$1,698.09
			\$4,762.54	\$5,195.94
			\$0.00	\$0.00
			\$3,751.08	\$4,092.42
			\$10,835.80	\$11,821.84
Annual Premium Active:				\$459,216.44
Annual Premium Retirees:				\$351,961.36
<b>TOTAL ANNUAL STATE PREMIUM (Active &amp; Retirees):</b>				<b>\$811,177.80</b>



# **Horizon Disruption Analysis**

*Borough of Penns Grove*

SUMMARY

SUBMITTED	MATCHED	UNMATCHED	PERCENT IN
296	194	102	66

HORIZON DIRECT ACCESS	CURRENT PAR TN	STATUS	INSTPROG	PROVIDER	ADDRESS	CITY	STATE	CLAWMNTS	SERVICES	CHARGES
NO	PAR	043698681	P	PELUSO, SUSAN	SITE 301 WHITE CLAY CREEK	NEWARK	DE	1	2	\$455.00
YES	PAR	043840759	P	BOSTON ASSOCIATES REHABILITATION LLC	291 Harding Hwy	Cameys Point	NJ	1	6	\$2,302.00
YES	PAR	050441203	P	HESS ANKLE AND FOOT CENTER LLC	300 Lexington Rd	Swedesboro	NJ	1	1	\$150.00
YES	PAR	054620328	P	BOOTH RADIOLOGY ASSOCIATES PA	PO Box 8500	Philadelphia	PA	1	3	\$214.00
YES	PAR	058404145	P	BOOTH RADIOLOGY ASSOCIATES PA	PO Box 8500	Philadelphia	PA	1	1	\$210.00
YES	PAR	058464598	P	PAIN SPECIALISTS PA	1907 New Rd	Northfield	NJ	1	1	\$250.00
YES	PAR	061128081	P	DIANON SYSTEMS INC	PO Box 8005	Burlington	NC	1	3	\$410.00
YES	PAR	070623801	P	JESSIE CLAIRVILL, OO, LLC	330 Woodstown Road	Salem	NJ	1	3	\$235.00
YES	PAR	071428633	P	CARDIOVASCULAR ASSOCIATES OF THE DELAWA	120 White Horse Pike	Haddon Heights	NJ	1	2	\$361.00
YES	PAR	072504673	P	ROTHMAN INSTITUTE OF NEW JERSEY PA	PO Box 754075	Philadelphia	PA	1	1	\$150.00
YES	PAR	072506100	P	COOPER ANESTHESIA ASSOCIATES PA	PO Box 1730	Cherry Hill	NJ	1	2	\$5,280.00
YES	PAR	074601092	P	WOODBURY MEDICAL OFFICE	50 Cooper St	Woodbury	NJ	1	7	\$575.00
YES	PAR	082380046	P	ARTHRITIS AND RHEUMATOLOGY ASSOCIATES	PO Box 2697	Vineand	NJ	1	2	\$3,760.00
YES	PAR	084422277	P	WOODBURY PEDIATRICS LLC	307 Glassboro Rd	Woodbury Heights	NJ	1	3	\$275.00
YES	PAR	084569472	P	CENTER FOR ADVANCED UROLOGY LLC	PO Box 413	Bridgeon	NJ	1	4	\$1,560.00
YES	PAR	089425895	P	PINNACLE MID ATLANTIC ANESTHESIA ASSOCIA	PO Box 650782	Dallas	TX	1	4	\$1,995.00
YES	PAR	089603092	P	FENWICK EMERGENCY PHYSICIANS	PO Box 37812	Philadelphia	PA	1	2	\$1,696.00
YES	PAR	099465005	P	REGIONAL DIAGNOSTIC IMAGING PA	2527 Cranberry Highway	Warrenham	MA	1	1	\$73.00
YES	PAR	096389882	P	COOPER PERINATOLOGY ASSOCIATES	PO Box 6016	Bellmawr	NJ	1	1	\$339.00
YES	PAR	096701180	P	ADVANCED ORTHOPAEDIC CENTERS PA	414 Tatum Street	Woodbury	NJ	1	12	\$1,290.00
YES	PAR	100600902	P	SATISH K MITTAL MD	112 Running Deer Th	Pittsgrove	NJ	1	1	\$485.00
YES	PAR	101560432	P	FENWICK EMERGENCY PHYSICIANS	PO Box 37812	Philadelphia	PA	1	3	\$2,149.00
YES	PAR	102600221	P	ADVANCED ORTHOPAEDIC CENTERS PA	414 Tatum Street	Woodbury	NJ	1	4	\$660.00
YES	PAR	106789267	P	FIRST STEP PEDIATRICS	PO Box 189	Deerfield Street	PA	1	4	\$700.00
YES	PAR	107806721	P	INGRID P WARMUTH MD PA	PO Box 785006	Philadelphia	PA	2	7	\$2,999.00
NO	PAR	108949947	P	APOGEE MEDICAL GROUP	PO Box 708640	Sandy	UT	1	2	\$557.72
YES	PAR	109803551	P	ADVANCED ENDOCRINOLOGY LLC	310 Woodstown Road	Salem	NJ	1	2	\$240.00
YES	PAR	112926666	P	SALEM MEDICAL PROFESSIONALS PC	PO Box 8735	Bellfast	ME	1	3	\$1,126.00
YES	PAR	114540187	P	SALEM INTERNAL MEDICINE PC	316 Menon Avenue	Cameys Point	NJ	2	5	\$510.00
YES	PAR	119346753	P	CHILDRENS HEALTHCARE ASSOCIATES OF NEW J	PO Box 85045892	Philadelphia	PA	1	2	\$105.00
YES	PAR	120466390	P	CARDIOVASCULAR ASSOCIATES OF THE DELAWA	120 White Horse Pike	Haddon Heights	NJ	1	1	\$220.00
YES	PAR	120489702	P	ADVOCARE LLC	PO Box 3001	Voorhees	NJ	1	4	\$243.00
YES	PAR	124584000	P	SALEM MEDICAL PROFESSIONALS PC	PO Box 8735	Bellfast	ME	1	1	\$269.00
YES	PAR	12564756	P	PENNSVILLE RADIOLOGY INC	248 S Broadway	Pennsville	NJ	1	19	\$7,746.00
YES	PAR	127443011	P	CARDIOVASCULAR ASSOCIATES OF THE DELAWA	120 White Horse Pike	Haddon Heights	NJ	1	1	\$550.00
YES	PAR	129467124	P	SALEM MEDICAL PROFESSIONALS PC	PO Box 8735	Bellfast	ME	1	3	\$347.00
YES	PAR	133757370	P	FJA SENIOR CITIZENS MEDICAL CLINIC	1102 Atlantic Ave	Atlantic City	NJ	1	6	\$400.00
NO	NON-PAR	134213664	P	LABORATORY CORP OF AMERICA	PO Box 2240	Burlington	NC	1	26	\$23,245.61
NO	NON-PAR	135442887	P	SINGILEX INC	1650 HARBOR BAY PKWY #200	ALAMEDA	CA	1	6	\$1,573.00
YES	PAR	135742238	P	EDWARD W CIPOLLADO PA	330 Woodstown Rd	Salem	NJ	1	1	\$907.9
YES	PAR	136044361	P	FIRST STEP PEDIATRICS	PO Box 189	Deerfield Street	NJ	1	2	\$170.00
YES	PAR	136585940	P	UMDNJ SOM PATHOLOGY	PO Box 635	Bellmawr	NJ	1	2	\$115.00
YES	PAR	138446040	P	PREMIER WOMENS HEALTH OF SOUTH JERSEY	PO Box 2403	Bellmawr	NJ	1	2	\$195.00
YES	PAR	138505536	P	SALEM MEDICAL PROFESSIONALS PC	PO Box 650782	Voorhees	NJ	1	4	\$1,243.00
YES	PAR	139423597	P	DAVID J GEHRING MD	PO Box 8735	Dallas	TX	1	2	\$2,099.50
YES	PAR	139762747	P	ALLERGY ASTHMA CARE CENTER	223 S Evvingreen Avenue	Bellfast	ME	1	39	\$5,118.00
YES	PAR	140688534	P	COOPER PERINATOLOGY ASSOCIATES	901 Route 168 Suite 504	Woodbury	NJ	1	2	\$809.96
YES	PAR	141490422	P	COOPER PATHOLOGY GROUP	PO Box 6016	Turnersville	NJ	1	6	\$950.00
NO	PAR	141563542	P	DAVID D CAROZZINO DPM PC	PO Box 6016	Bellmawr	NJ	1	1	\$422.00
YES	PAR	142447412	P	PREMIER WOMENS HEALTH OF SOUTH JERSEY	158 Delaware Street	Bellmawr	NJ	1	1	\$150.00
YES	PAR	142702147	P	CROSS KEYS PHYSICAL THERAPY CENTER	PO Box 2403	Woodbury	NJ	1	2	\$166.00
YES	PAR	143625557	P	SOUTH JERSEY ANESTHESIA AND PAIN PHYSICI	151 Fries Mill Road	Voorhees	NJ	1	1	\$231.00
NO	NON-PAR	144482868	P	MAUREN I UNDERWOOD LCSW	PO Box 766	Woodbury	NJ	1	2	\$250.00
YES	PAR	144563759	P	REGIONAL DIAGNOSTIC IMAGING PA	2005 Kings Hwy	Swedesboro	NJ	1	4	\$564.00
YES	PAR	144825848	P	BOSTON ASSOCIATES REHABILITATION LLC	2527 Cranberry Highway	Warrenham	MA	1	1	\$400.00
YES	PAR	145629188	P	DELAWARE VALLEY UROLOGY LLC	291 Harding Hwy	Cameys Point	NJ	1	1	\$6,257.00
YES	PAR	146133927	P	APOGEE MEDICAL GROUP	2003 Lincoln Drive W	Merrion	NJ	3	105	\$1,000.00
YES	PAR	146645854	P	COOPER GYN ONCOLOGY ASSOCIATES	PO Box 708640	Sandy	UT	1	1	\$73.41
YES	PAR	147440400	P	BRIAN K GOTSCHL DPM	636 A Kings Highway	Bellmawr	NJ	1	1	\$3,297.00
YES	PAR	148406899	P	RADIOLOGY ASSOCIATES OF NEW JERSEY PC	PO Box 347274	Woodbury	NJ	1	2	\$162.00
NO	PAR	148462419	P	EMERGENCY CARE SERVICES OF NJ PA	PO Box 636086	Pittsburgh	PA	1	5	\$1,541.00
						Cincinnati	OH	2	2	\$1,161.00



PERSON DIRECT ACCESS	CURRENT PAR TN	STATUS	PROVIDER	ADDRESS	CITY	STATE	ZIP	CLAIMS	SERVICE	CHANGES
YES	PAR	P	ELMUR RADIOLOGY AND SKIN CARE ASSOCIATES PC	200 Kings Hwy S	Cherry Hill	NJ	08034			2
NO	PAR	P	S.H.S. EMERGENCY PHYSICIANS SERVICES PA	PO Box 7975	Lancaster	PA	17604			2
NO	PAR	P	FENWICK EMERGENCY PHYSICIANS	PO Box 37812	Philadelphia	PA	19101			2
YES	PAR	P	FENWICK EMERGENCY PHYSICIANS	PO Box 37812	Philadelphia	PA	19101			2
YES	PAR	P	REGIONAL OTOLARYNGOLOGY HEAD AND NECK AS	PO Box 48158	Newark	PA	19101			3
YES	PAR	P	SERETISCARE FAMILY PRACTICE	499 Beckett Road	Logan Township	NJ	07101			3
YES	PAR	P	DIMMARINO KROOP PRIETO GI ASSOCIATES	26 E Red Bank Avenue	Woodbury	NJ	08095			9
YES	PAR	P	WOMEN FIRST LLC	PO Box 15875	Wilmington	DE	08096			2
YES	PAR	P	MAZZUCCA EYE AND LASER CENTERS PA	48 North Broadway	Wilmington	NJ	08070			1
YES	PAR	P	SOUTH JERSEY ANESTHESIA AND PAIN PHYSICI	PO Box 766	Woodbury	NJ	08096			2
YES	PAR	P	EYE PHYSICIANS PC	1140 White Horse Rd	Woodbury	NJ	08043			1
YES	PAR	P	CARE ASSOCIATES OF SALEM COUNTY PC	341 Shell Rd	Penns Grove	NJ	08069			2
YES	PAR	P	SOUTH JERSEY ANESTHESIA AND PAIN PHYSICI	PO Box 766	Woodbury	NJ	08096			2
YES	PAR	P	REGIONAL DIAGNOSTIC IMAGING PA	2527 Cranberry Highway	Wareham	MA	02571			2
YES	PAR	P	UMH FAMILY HEALTH CENTERS	1120 N Delsea Drive	Glassboro	NJ	08028			1
YES	PAR	P	THOMAS G LEE DC	297 Westwood Dr	Woodbury	NJ	08096			1
YES	PAR	P	ELMER FAMILY PRACTICE PC	PO Box 577	Elmer	NJ	08318			1
YES	PAR	P	ADVOCARE LLC	PO Box 3001	Voorhees	NJ	08043			3
YES	PAR	P	PENNSVILLE SPORTS MEDICINE	PO Box 35	Pennsville	NJ	08070			1
YES	PAR	P	WESTWOOD WOMENS HEALTH CENTER	600 Jessup Rd	Paulsboro	NJ	08066			1
YES	PAR	P	EMERGENCY CARE SERVICES OF NJ PA	PO Box 636096	Cincinnati	OH	45263			3
YES	PAR	P	ADVOCARE LLC	PO Box 3001	Voorhees	NJ	08043			1
YES	PAR	P	MAZZUCCA EYE AND LASER CENTERS PA	48 North Broadway	Pennsville	NJ	08070			2
YES	PAR	P	ABRAHAM CHIROPRACTIC AND WELLNESS CENTER	545 Route 73 North	West Berlin	NJ	08091			4
YES	PAR	P	CARE ASSOCIATES OF SALEM COUNTY PC	125 East Avenue	Woodstown	NJ	08098			1
YES	PAR	P	UMDNJ SOM DEPARTMENT OF PSYCHIATRY	PO Box 635	Bellmawr	NJ	08099			7
YES	PAR	P	KENNEDY PHYSICIAN ASSOCIATES	PO Box 13704	Philadelphia	PA	19101			2
YES	PAR	P	ADVANCED ORTHOPAEDIC CENTERS PA	414 Talum Street	Woodbury	NJ	08096			1
YES	PAR	P	PENN. JERSEY PULMONARY ASSOCIATES	52 W Red Bank Ave	Woodbury	NJ	08096			1
YES	PAR	P	CHILDRENS HEALTH CARE ASSOCIATES INC	PO Box 8500-9137	Philadelphia	PA	19178			1
YES	PAR	P	AFFILIATED PODIATRIST OF SOUTH JERSEY LT	238 West Chestnut Avenue	Vineland	NJ	08360			1
YES	PAR	P	FENWICK EMERGENCY PHYSICIANS	PO Box 37812	Philadelphia	PA	19101			3
YES	PAR	P	SOUTH JERSEY RADIOLOGY ASSOCIATES PA	PO Box 1710	Voorhees	NJ	08043			2
YES	PAR	P	DELAWARE VALLEY UROLOGY LLC	2003 Lincoln Drive W	Marlton	NJ	08053			1
YES	PAR	P	ADVOCARE LLC	PO Box 3001	Voorhees	NJ	08043			1
YES	PAR	P	WESTWOOD WOMENS HEALTH CENTER	600 Jessup Rd	Paulsboro	NJ	08066			1
YES	PAR	P	BOOTH RADIOLOGY ASSOCIATES PA	PO Box 8500	Philadelphia	PA	19178			1
YES	PAR	P	WOODBURY SURGICAL ASSOCIATES	127 N Broad St	Woodbury	NJ	08096			1
YES	PAR	P	CMC DEPARTMENT OF MEDICINE GROUP PA	PO Box 6018	Bellmawr	NJ	08099			2
YES	PAR	P	BTD RADIOLOGY AT SALEM PA	PO Box 11028	Lancaster	PA	17605			2
YES	PAR	P	THE NEMOURS FOUNDATION	PO Box 347274	Pittsburgh	PA	32247			1
YES	PAR	P	RADIOLOGY ASSOCIATES OF NEW JERSEY PC	PO Box 8735	Columbus	ME	04915			2
YES	PAR	P	SALEM MEDICAL PROFESSIONALS PC	Department L 3282	Columbus	OH	43260			17
YES	PAR	P	HEARTLAND REHABILITATION SERVICE OF NEW	341 Shell Rd	Penns Grove	NJ	08069			14
YES	PAR	P	CARE ASSOCIATES OF SALEM COUNTY PC	2003 Lincoln Drive W	Marlton	NJ	08063			3
YES	PAR	P	DELAWARE VALLEY UROLOGY LLC	PO Box 2749	Vineland	NJ	08360			1
YES	PAR	P	PREMIER ORTHOPAEDIC ASSOCIATES	PO Box 6017	Bellmawr	NJ	08099			6
YES	PAR	P	COOPER PATHOLOGY GROUP	PO Box 662	Lehighton	PA	18235			1
YES	PAR	P	TWH INC	PO Box 662	Lehighton	PA	18235			11
YES	PAR	P	SANDRA E VAUSE MD PC	545 Beckett Rd	Logan Township	NJ	08085			1
YES	PAR	P	DIAGNOSTIC PATHOLOGY CONSULTANTS PA	PO Box 60100	Lancaster	SC	29406			4
YES	PAR	P	BTD RADIOLOGY AT SALEM PA	PO Box 11028	Lancaster	PA	17605			5
YES	PAR	P	SOUTH JERSEY CHEST DISEASE PA	107 Vine St	Hammorton	NJ	08037			4
YES	PAR	P	SOUTH JERSEY ANESTHESIA AND PAIN PHYSICI	PO Box 766	Woodbury	NJ	08096			2
YES	PAR	P	COOPER PRIMARY CARE PENNSVILLE PA	Lockbox 6019	Bellmawr	NJ	08099			1
YES	PAR	P	LEIGH HOPKINS MD	340 Route 45	Salem	NJ	08079			2
YES	PAR	P	JEFFERSON UNIVERSITY PHYSICIANS	PO Box 828955	Philadelphia	PA	19182			6
YES	PAR	P	BTD RADIOLOGY AT SALEM PA	PO Box 11028	Lancaster	PA	17605			4
NO	PAR	P	RIDIAZ MD LLC	4 Bypass Rd	Salem	NJ	08079			3
YES	PAR	P	BTD RADIOLOGY AT SALEM PA	PO Box 11028	Lancaster	NJ	08079			7
YES	PAR	P	EMERGENCY CARE SERVICES OF NJ PA	PO Box 636086	Cincinnati	OH	45263			6
YES	PAR	P	CARE ASSOCIATES OF SALEM COUNTY PC	PO Box 636086	Woodstown	NJ	08098			1

PORTAL ACCESS	DIRECT ACCESS	CURRENT PAR	STATUS	PROVIDER	ADDRESS	CITY	STATE	CD	CAMENTS	SERVICES	CHARGES
YES	PAR	202689151	P	POINT PLAZA FAMILY PRACTICE PA	565 Egg Harbor Rd	Sewell	NJ	08080	1	3	\$235.00
YES	PAR	202787249	P	DR HILLI FAMILY PRACTICE AND WELLNESS CT	20 Hunters Creek Cir	Mullica Hill	NJ	08062	1	1	\$156.00
YES	PAR	202847306	P	CRAIG H ROSEN MD PA	603 N Broad St	Woodbury	NJ	08096	1	1	\$125.00
YES	PAR	202896034	P	CAPE URGENT CARE LLC	8 Bernyn Drive	Ocean View	NJ	08230	1	3	\$250.00
YES	PAR	203880054	P	SALEM MEDICAL PROFESSIONALS PC	PO Box 8735	Belfast	ME	04915	6	10	\$4,249.00
NO	PAR	203894053	P	ALL ABOUT WOMEN OF SEBETISCARE FAMILY PRACTICE	4735 OGLETTOWN-STANTON RD	NEWARK	DE	19713	1	1	\$200.00
YES	PAR	203997380	P	SEBETISCARE FAMILY PRACTICE	499 Beckett Road	Logan Township	PA	08085	2	10	\$1,070.00
NO	NON-PAR	204103485	P	ALFIERI CARDIOLOGY PA	PO Box 347408	Pittsburgh	PA	15251	2	17	\$478.00
NO	PAR	204431686	P	DAVYSPRING CENTER FOR BTD RADIOLOGY AT SALEM PA	PO Box 11028	Lancaster	DE	17605	1	2	\$1,198.00
YES	PAR	204546275	P	ADVANCED ORTHOPAEDIC CENTERS PA	414 Talum Street	Woodbury	PA	08096	6	12	\$1,230.00
NO	PAR	204600961	P	MINUTECLINIC DIAGNOSTIC OF NEW JERSEY LL	PO Box 8442	Belfast	ME	04915	3	4	\$59.98
NO	PAR	204868967	P	DR HILLI FAMILY PRACTICE AND WELLNESS CT	20 Hunters Creek Cir	Mullica Hill	NJ	08062	1	1	\$85.00
YES	PAR	205425808	P	DENIS A TAVANI MD FENWICK EMERGENCY PHYSICIANS	309 Rie 45	Salem	NJ	08079	1	10	\$370.00
YES	PAR	205481378	P	FENWICK EMERGENCY PHYSICIANS	PO Box 37812	Philadelphia	PA	19101	1	3	\$750.00
NO	NON-PAR	205494939	P	LANTIER, ANGELA D REGIONAL DIAGNOSTIC IMAGING PA	4071 Tates Creek Cir Dr	Lexington	KY	40517	1	3	\$516.00
YES	PAR	209327050	P	COOPER MEDICAL CENTER SOUTH JERSEY HOSPITAL SYSTEM - ELMER	2527 Cranberry Highway	Warehlem	MA	02571	1	4	\$46.00
YES	PAR	210634462	I	VIRTUA WEST JERSEY HEALTH SYSTEM	PO Box 6037	Bethmar	NJ	08099	2	1	\$35,944.00
YES	PAR	210634484	I	NEW POINT BEHAVIORAL HEALTH CARE	PO Box 6050	Bethmar	NJ	08099	4	13	\$33,122.72
YES	PAR	210634532	I	AMERICAN LEGION AMBULANCE ASSOC	PO Box 8500-8032	Philadelphia	PA	19178	1	2	\$3,524.00
YES	PAR	210700968	P	MICHAEL S ROGERS MD PA	404 Talum St	Woodbury	NJ	08096	1	1	\$120.00
NO	NON-PAR	211545453	P	TREASURER STATE OF NEW JERSEY	PO Box 187 32 Maple Court	Woodstown	NJ	08098	1	2	\$665.00
YES	PAR	2116000928	P	WAMIG S SULTAN MD BOOTH RADIOLOGY ASSOCIATES PA	831 Kings Hwy	Woodbury	NJ	08096	1	4	\$166.00
YES	PAR	211733774	P	WOMEN FIRST LLC	PO Box 35219	Newark	NJ	07193	2	2	\$68.50
YES	PAR	217606372	P	KENNEDY MEMORIAL HOSPITAL	310 Woodstown Road	Salem	NJ	08079	1	5	\$1,167.70
YES	PAR	221321446	P	MATERINITY AND WOMENS HEALTH LLC	PO Box 8500	Philadelphia	PA	19178	3	1	\$24.00
YES	PAR	221524591	P	ADVANCED ORTHOPAEDIC CENTERS PA	PO Box 15875	Wilington	DE	19850	1	1	\$150.00
YES	PAR	221773439	I	UNDERWOOD MEMORIAL HOSPITAL	187 East Avenue	Woodstown	NJ	08098	1	1	\$200.00
YES	PAR	221820210	I	MANHATTAN PHYSICIANS LABORATORIES INC	PO Box 48023	Newark	NJ	07107	2	10	\$12,385.00
YES	PAR	221931562	P	AMANTEN DECASTRO MD PA	509 North Broad Street	Woodbury	NJ	08096	7	51	\$69,245.21
YES	PAR	222023455	P	RAYMOND A RIVELL DPM PA	414 Talum Street	Woodbury	NJ	08096	2	8	\$3,205.00
YES	PAR	222132561	P	EDWARD W CIPOLLA DO PA	25 Riverside Drive	Pipe Brook	NJ	07058	7	7	\$8,769.00
YES	PAR	222135604	P	AMANTEN DECASTRO MD PA	9002 Lincoln Drive W	Manton	NJ	08053	3	4	\$205.00
YES	PAR	222379086	P	NAAGINDAS M VORA MD	4 Bypass Rd	Salem	NJ	08079	3	3	\$2,925.00
YES	PAR	222405059	P	BIO REFERENCE LABORATORIES INC	PO Box 311	Penns Grove	NJ	08069	2	2	\$1,000.00
YES	PAR	222417450	P	PEDRO Q DAVRIT MD	PO Box 247	Penns Grove	NJ	08070	1	1	\$1,000.00
YES	PAR	222421612	P	STAT MEDICAL TRANSPORTINC	481 Edward H Ross Drive	Elmwood Park	NJ	07407	1	1	\$245.00
YES	NON-PAR	222443981	P	GROVE PODIATRY ASSOCIATION	PO Box 45	Salem	NJ	08079	4	5	\$5,960.00
NO	PAR	222536255	P	JOHN E PATRICELLI MD	330 Woodstown Rd	Philadelphia	PA	19103	1	1	\$621.45
YES	PAR	222581125	P	JOHN A GAGLIARDI DC	PO Box 13702	Garners Point	NJ	08069	3	22	\$1,990.00
YES	PAR	222660229	P	DANIEL E SHUELER MD	291 Harding Hwy	Salem	NJ	08079	2	4	\$2,069.00
NO	PAR	222782324	P	OXYMED HOMECARE EQUIPMENT CORPO	1 Pointers Auburn Road	Garners Point	NJ	08069	7	144	\$4,630.00
NO	PAR	222798324	P	HELEN L SLOANE MD	295 Shaff Rd	Penns Point	NJ	08069	2	0	\$723.00
NO	PAR	222798324	P	SOUTHGATE HEALTH CARE CENTER (SNF )	449 South Pennsville Auburn Road	Penns Point	NJ	08070	1	1	\$112.00
NO	PAR	223061617	P	CROSS KEYS PHYSICAL THERAPY CENTER	48 N Broadway Suite D	Penns Point	PA	08081	1	10	\$1,000.99
YES	PAR	223096649	P	ATLANTIC CARE CLINICAL LABS	600 Berlin Crosskeys Rd	Sacklerville	NJ	08012	1	5	\$4,200.00
YES	PAR	223266214	P	HELEN L SLOANE MD	151 Fries Mill Road	Turnersville	NJ	08012	1	4	\$443.00
YES	PAR	223266219	P	HELEN L SLOANE MD	PO Box 785616	Philadelphia	PA	19178	1	4	\$9.00
YES	PAR	223311298	P	HELEN L SLOANE MD	PO Box 8018	Bethmar	NJ	08099	3	4	\$1,197.00
NO	NON-PAR	223333969	P	EKG INTERPRETERS SALEM COUNTY	1601 North 2nd Street	Milwaukee	NJ	08332	2	5	\$600.00
YES	PAR	223340716	P	CENTRA NEW JERSEY PC	PO Box 11268	Lancaster	PA	17605	3	3	\$120.00
YES	PAR	223425678	P	LOURENS MEDICAL ASSOCIATES PA	5000 Sagenore Dr	Menton	PA	08053	3	7	\$1,130.00
YES	PAR	223485583	P	MAZZUCA EYE AND LASER CENTERS PA	PO Box 9367	Belfast	ME	04915	1	2	\$112.00
YES	PAR	223486722	P	COOPER PRIMARY CARE PENNSVILLE PA	48 North Broadway	Salem	NJ	08079	4	33	\$1,875.00
YES	PAR	223510467	P	MEDICAL DIAGNOSTIC LAB	Lockbox 6019	Bethmar	NJ	08099	1	1	\$770.00
YES	PAR	223512371	I	OAK AND MAIN SURGICENTER	2439 Kuser Road	Penns Point	NJ	08690	1	1	\$103.00
YES	PAR	223537011	P	CARE ASSOCIATES OF SALEM COUNTY PC	907 North Main Road	Vineland	NJ	08360	1	22	\$4,600.00
YES	PAR	223546999	P	EMERGENCY PHYSICIANS ASSOCIATES SOUTH JE	PO Box 3001	Voorhees	NJ	08043	1	5	\$2,000.00
YES	PAR	223586506	P	EMERGENCY PHYSICIANS ASSOCIATES SOUTH JE	341 Shell Rd	Penns Grove	NJ	08069	4	6	\$786.00
					Page 83 Box 635999	Clinchmail	OH	45263	1	1	\$713.00

PORTAL DIRECT ACCESS	CURRENT PAR TN	STATUS	NOTES/PROV	PROVIDER	ADDRESS	CITY	STATE	ZIP	CLAIMANTS	SERVICE	CHARGE
YES	PAR	223700659	P	ROTHMAN INSTITU	1109 NEW BRISTOL PA	Philadelphia	PA	19175	2		\$2,206.00
YES	NON-PAR	223729445	P	FOX REHABILITATION SERVICES INC	PO Box 794079	Philadelphia	PA	19175	2		\$385.00
YES	PAR	223791470	P	CONTINUING CARE	130 Gaither Drive	Mount Laurel	NJ	08054	1		\$341.08
NO	PAR	223837341	P	PENNSVILLE COUSSELING ASSOCIATES LLC	6 Hummings Avenue	Pennsville	NJ	08070	1		\$1,120.00
YES	PAR	223838322	P	MEMORIAL HOSPITAL OF SALEM COUNTYS	PO Box 503899	Saint Louis	MO	63150	1		\$288,364.66
YES	PAR	223850477	P	SALEM COUNTY CHIROPRACTIC CENTER	133C N Broadway	Pennsville	NJ	08070	20		\$1,210.00
YES	PAR	227784862	P	DILISI FAMILY MEDICINE LLC	110 N Woodbury Rd	Pitman	NJ	08071	3		\$75.00
YES	PAR	230517130	P	DELAWARE COUNTY MEMORIAL HOSP	PO BOX 8500-7585	PHILADELPHIA	PA	19178	1		-\$17,533.00
YES	PAR	231114954	P	BOOTH RADIOLOGY ASSOCIATES PA	PO Box 8500	Philadelphia	PA	19178	4		\$385.00
YES	PAR	232195702	P	AMERICAN MEDICAL RESPONSE	PO Box 409880	Atlanta	GA	30384	2		\$1,798.35
YES	PAR	232692637	P	HEALTH ACCESS NETWORK	PO Box 6500-6355	Moorestown	PA	19178	1		\$115.00
YES	PAR	232736153	P	NOVA CARE OUTPATIENT REHAB	C O Pritch Lockbox 824022	Philadelphia	PA	19178	1		\$1,217.00
NO	NON-PAR	232778799	P	HAVERFORD WELLNESS CENTER	345 MAIN STREET	HARLEYSVILLE	PA	19178	1		\$2,981.45
NO	PAR	232826045	P	JEANES HOSPITAL	7600 CENTRAL AVE	Philadelphia	PA	19111	1		\$2,981.45
YES	PAR	232829095	P	THOMAS JEFFERSON UNIVERSITY HOSPITAL	601 Walnut Street	Philadelphia	PA	19106	1		\$1,554.00
YES	PAR	232893988	P	INSTITUTE FOR DERMATOPATHOLOGY PC	14941 Collections Center Dr	Chicago	IL	60693	2		\$405.00
NO	NON-PAR	232919472	P	UNIVERSITY OF PITTSBURGH PHYSICIANS	PO Box 371980	Pittsburgh	PA	15250	2		\$279.00
YES	PAR	233041028	P	ADVOCARE LLC	PO Box 3001	Voorhees	NJ	08043	4		\$1,991.00
NO	NON-PAR	233080772	P	SYNERGY ORTHOPEDIC LLC	2901 Jolly Rd	Plymouth Meeting	PA	19462	1		\$155.76
YES	PAR	235375885	P	UMDNJ SOM PATHOLOGY	PO Box 635	Beltsville	NJ	08099	1		\$270.00
NO	NON-PAR	235981659	P	SCHNEIDER TERRILL	5424 STRICKLAND AVE	LAKELAND	FL	33812	1		\$2,250.00
NO	PAR	260001705	P	OUTPATIENT ANESTHESIA	D71 OMEGA DRIVE	NEWARK	DE	19808	3		\$3,304.00
YES	PAR	261157885	P	GLUCESTER COUNTY SURGICAL CENTER	163 Bridgton Pike	Mullica Hill	NJ	08062	1		\$16,327.80
YES	PAR	262343540	P	PINNAACLE MID ATLANTIC ANESTHESIA ASSOCIA	PO Box 650782	Dallas	TX	75265	1		\$664.30
NO	PAR	262587156	P	FREEL'S NICOLE G	216 FOUNTAIN CT #160	LEXINGTON	KY	40509	1		\$0.00
YES	PAR	263740119	P	HEALTH DIAGNOSTIC LABORATORY IN	SUITE 103	RICHMOND	VA	45059	2		\$4,586.40
NO	PAR	270764186	P	WOMEN FIRST LLC	PO Box 15875	Wilmington	DE	19850	2		\$440.00
YES	PAR	271348772	P	VIRTUA MEDICAL GROUP PA	PO Box 6028	Beltsville	NJ	08099	3		\$215.70
YES	PAR	273339534	P	FENWICK EMERGENCY PHYSICIANS	PO Box 37812	Philadelphia	PA	19101	2		\$2,374.00
YES	PAR	307866543	P	THE NEMOURS FOUNDATION	PO Box 404112	Atlanta	GA	30394	3		\$396.00
NO	PAR	320098824	P	GBL PATH INC	110 Washington Avenue	North Haven	CT	06473	2		\$78.00
YES	PAR	350668999	P	BOOTH RADIOLOGY ASSOCIATES PA	PO Box 8500	Philadelphia	PA	19178	1		\$68.00
NO	PAR	381891883	P	DOCTORS FOR EMERGENCY SERV	P O BOX 3048	WILMINGTON	DE	19804	5		\$1,522.00
YES	PAR	382084239	P	QUEST DIAGNOSTICS	PO BOX 824293	PHILADELPHIA	PA	33612	1		\$4,969.57
NO	NON-PAR	413103555	P	EMPI INC	599 Cardigan Rd	Saint Paul	MN	55126	12		-\$608.20
YES	PAR	412943365	P	REGIONAL DIAGNOSTIC IMAGING PA	2527 Cranberry Highway	Wareham	MA	02571	1		\$24.00
YES	PAR	418821161	P	BTD RADIOLOGY AT SALEM PA	PO Box 11028	Lancaster	PA	17605	1		\$125.00
YES	PAR	447462169	P	COOPER PRIMARY CARE PENNSVILLE PA	Lockbox 6019	Beltsville	NJ	08099	2		\$0.00
NO	PAR	450467418	P	PRAIRIE HEALTHCARE SERVICES	PO Box 121107	Dallas	TX	75312	1		\$135.00
NO	PAR	510064326	P	ST FRANCIS HOSP-WILMINGTON	PO Box 7777 W510308	Philadelphia	PA	19175	4		\$9,984.27
NO	NON-PAR	510065004	P	VA MEDICAL CENTER DE HOSP	CASHIER DEPT OF VA	WILMINGTON	DE	19805	1		\$7,380.28
NO	PAR	510067938	P	BEEBE MEDICAL CENTER-DE	424 SAVANNAH RD	LEWES	DE	19182	1		\$1,161.70
NO	PAR	510103684	P	CHRISTIANA CARE HLTH SVC	PO BOX 30170	WILMINGTON	DE	19805	1		\$11,238.95
NO	PAR	510108925	P	DELAWARE CLINICAL & LAB	PO BOX 12210	WILMINGTON	DE	19850	10		\$38.85
NO	PAR	510109905	P	X-RAY ASSOCIATES PA	5936 LIMESTONE RD #301	WILMINGTON	DE	19850	1		\$248.00
NO	PAR	510270514	P	PANZER DERMATOLOGY ASSOC	537 STANTON CHRISTIANA RD	WILMINGTON	DE	19713	4		\$242.00
NO	PAR	510272853	P	FAMILY & EAR NOSE & THROAT	SUITE 210	WILMINGTON	DE	19713	2		\$470.00
NO	PAR	510277818	P	LIMESTONE AMBULATORY	PO BOX 5030	WILMINGTON	DE	19808	2		\$2,760.00
NO	PAR	510297303	P	FIRST STATE ORTHOPAEDICS	4745 OGETTOWN-STANTON RD	NEWARK	DE	19713	3		\$12,844.32
NO	PAR	510298419	P	ANESTHESIA SERVICES PA	PO BOX 827909	PHILADELPHIA	PA	19182	3		\$1,215.00
NO	PAR	510303373	P	PAPASTAVROS ASSOCIATES	PO BOX 6015	NEWARK	DE	19714	1		\$242.00
NO	PAR	510327125	P	BRANDYWINE UROLOGY CONSULT	ATT BILLING DEPARTMENT	WILMINGTON	DE	19803	2		\$180.00
NO	PAR	510366909	P	DELAWARE ORTHOP. AEDICS SPE	1096 OLD CHURCHMANS RD	NEWARK	DE	19808	1		\$433.00
NO	PAR	510381623	P	BRANDYWINE EYE CENTER PA	2500 GLEBB RD STE 234	WILMINGTON	DE	19810	3		\$120.00
NO	PAR	510375578	P	SUSSEX EMERGENCY ASSOCS	PO BOX 3012	WILMINGTON	DE	19804	1		\$379.00
NO	PAR	510385047	P	KALMAN, VICTOR	1602 NEWPORT GAP PIKE	PHILADELPHIA	PA	19175	1		\$4,660.00
NO	PAR	510396749	P	BRANDYWINE MEDICAL ASSOCS	PO BOX 512519	WILMINGTON	DE	19175	1		\$345.00
NO	PAR	510402966	P	FIRST STATE SURGERY CENTER	1000 TWIN C LANE #200	NEWARK	DE	19173	1		\$3,800.00
NO	PAR	510407860	P	DIAGNOSTIC IMAGING ASSOC	1601 MILLTOWN RD SUITE 13	WILMINGTON	DE	19175	2		\$566.00
NO	PAR	520936535	P	EMERGENCY SERVICE ASSOC PA	PO BOX 513001	PHILADELPHIA	PA	19808	3		\$353.00
YES	PAR	521312786	P	SHAUKAT M QURESHI MD	250 South Broadway	Pennsville	NJ	08070	1		\$880.00
NO	PAR	521656507	P	ATLANTIC GENERAL HOSPITAL	PO BOX 510642	PHILADELPHIA	PA	19175	2		\$1,257.02

PORTION DIRECT ACCESS	CURRENT PAR TN	STATUS	INSTTYPE	PROVIDER	ADDRESS	CITY	STATE	ZIP	CLAIMANTS	SERVICES	CHARGES
NO	PAR	521855441	P	DOCTOR'S PATHOLOGY SVCS	PO BOX 892	CONROE RD/VILLE	PA	19331	1	1	\$171.00
NO	PAR	522046143	P	MACKEY FAMILY PRACTICE	258 FOX HUNT DRIVE	BEAR	DE	19701	1	3	\$320.00
NO	PAR	522079699	P	MID ATLANTIC GI CONSULTANT	STE 203 APEX MED CENTER	NEWARK	DE	19713	1	1	\$1,100.00
NO	PAR	522111102	P	DELMARVA RADIOLOGY PA	918 EASTERN SHORE DR	SALISBURY	MD	19713	1	2	\$384.00
YES	PAR	522165554	P	DJ ORTHOPEDICS, LLC	PO Box 515471	Los Angeles	CA	90051	3	7	\$1,776.20
YES	PAR	522195192	P	SOUTH JERSEY ANESTHESIA AND PAIN PHYSICI	PO Box 766	Woodbury	NJ	08096	2	2	\$3,591.00
NO	PAR	522212112	P	LIFEWATCH SERVICES INC	1161 PAYSHERE CIRCLE	CHICAGO	IL	08096	2	2	\$1,350.00
YES	NON-PAR	548297510	P	PINNACLE MID ATLANTIC ANESTHESIA ASSOCIA	PO Box 650782	Dallas	TX	75265	1	1	\$759.00
NO	NON-PAR	550499788	P	ADORA L.H. MATTHEWS MD	PO Box 100523	Florence	SC	29501	1	7	\$759.00
NO	PAR	556391688	P	XRAY ASSOCIATES PA	5936 Limestone Road	Hockessin	DE	19707	1	1	\$124.00
YES	PAR	562906612	P	SANDRA E VAUSE MD PC	545 Beckett Rd	Logan Township	NJ	08085	1	1	\$170.00
NO	PAR	570319903	P	ONE CARE OB GYN	390 N Broadway	Pennsville	NJ	08070	1	1	\$105.00
NO	NON-PAR	570427724	I	LOWER FLORENCE COUNTY HOSPITAL	201 Cashua St	Darlington	SC	29532	1	26	\$1,608.00
NO	NON-PAR	570523690	P	STOKES REGIONAL EYE CENTER	602 E Cheves Street	Florence	SC	29501	1	5	\$257.00
NO	NON-PAR	570727857	P	CAROLINA HEALTH CARE	PO Box 1905	Florence	SC	29503	1	4	\$322.00
NO	NON-PAR	570823239	P	R JOSEPH HEALY MD PA	PO Box 3408	Florence	SC	29502	1	12	\$2,090.00
NO	NON-PAR	570966351	P	PEE DEE RADIOLOGY GROUP	PO Box 1690	Florence	SC	29502	1	4	\$32.00
NO	NON-PAR	571000349	P	ADVANCED RADIOLOGY CONSULTANTS	PO Box 6857	Florence	SC	29502	1	8	\$1,300.00
NO	NON-PAR	571022325	I	LOWER FLORENCE CITY HOSPITAL	PO Box 1029	Lake City	SC	29560	1	1	\$8,596.00
NO	NON-PAR	571049603	P	CAROLINA RADIOLOGY ASSOCIATES	PO Box 51030	Myrtle Beach	SC	29579	1	4	\$807.00
NO	NON-PAR	572600351	P	FLORENCE COUNTY EMS	180 North Hwy Street	Florence	SC	29501	1	4	\$355.60
YES	PAR	5778209541	P	GARDEN STATE INFECTIOUS DISEASE ASSOCIAT	709 Haddonfield Berlin Rd	Voorhees	NJ	08043	1	23	\$1,830.00
YES	PAR	577867060	P	ADVOCARE LLC	PO Box 3001	Voorhees	NJ	08099	1	2	\$254.00
YES	PAR	586485160	P	COOPER PRIMARY CARE PENNSVILLE PA	Lockbox 6019	Bethlmar	NJ	08099	1	2	\$134.00
YES	PAR	590634433	P	A1 DUPONT HOSPITAL FOR CHILDREN	PO Box 404112	Atlanta	GA	30384	7	25	\$11,810.00
NO	PAR	590704934	P	WATSON CLINIC LLP	PO BOX 95004	LAKELAND	FL	33805	1	44	\$3,806.00
NO	PAR	591262719	P	RADIOLOGY & IMAGING SPECIALISTS	60 W GORE ST	TAMPA	FL	33805	2	5	\$404.00
NO	PAR	591292958	P	CARDIOLOGY ASSOCIATE OF ORLANDO	PO BOX 20027	ORLANDO	FL	32806	1	3	\$785.00
NO	PAR	592398397	P	CARDIOLOGY CENTER OF TAMPA	13701 BRUCE B DOWNS BLVD	TAMPA	FL	33613	1	2	\$1,905.00
NO	PAR	593097649	P	MICRO PATH LABORATORIES	1125 BARTOW RD STE 101	LAKELAND	FL	33801	1	7	\$60.00
NO	PAR	593231594	P	NORTH LAKELAND PAIN AND TRAUMA	5516 HIGHWAY 98 NORTH	LAKELAND	FL	33586	1	2	\$5,928.00
NO	PAR	593468262	P	DOROTHY J RAY MD PA	1920 LAKELAND HILLS BLVD	LAKELAND	FL	33805	1	5	\$120.00
NO	PAR	610444707	I	CENTRAL BAPTIST HOSPITAL	PO BOX 32940	LOUISVILLE	KY	40232	1	0	\$562.00
NO	PAR	610940967	P	RICE NELSON T	PO BOX 70335	LOUISVILLE	KY	40503	1	0	\$0.00
NO	PAR	610945743	P	SPICER, PAUL J	PO BOX 1686	LEXINGTON	KY	40588	1	1	\$220.00
NO	PAR	611063470	P	PATHOLOGY AND CYTOLOGY LABS INC	290 BIG RUN RD	LEXINGTON	KY	40503	1	1	\$55.00
NO	PAR	611230481	P	PARROTT II, OLSON	1760 NICHOLASVILLE RD #10	LEXINGTON	KY	40503	1	2	\$260.00
NO	PAR	611230481	I	UK HEALTHCARE HOSPITALS	Look Box 951326	Cleveland	OH	44193	1	1	\$3,205.20
NO	PAR	621433252	P	AIT LABORATORIES	2265 EXECUTIVE DR #A	INDIANAPOLIS	IN	46241	1	5	\$3,205.20
NO	NON-PAR	621587267	I	OHG OF SOUTH CAROLINA INC	PO Box 277631	Atlanta	GA	30384	1	18	\$6,383.74
NO	PAR	621637129	P	CARIS DIAGNOSTICS INC	PO BOX 844117	DALLAS	TX	75261	1	1	\$420.00
NO	NON-PAR	621671678	P	CAROLINAS MEDICAL ALLIANCE INC	947 South Ithy Street	Florence	SC	29501	1	4	\$1,043.00
NO	NON-PAR	680643173	P	MAUREEN I UNDERWOOD LCSW	2005 Kings Hwy	Swedenboro	NJ	08085	1	9	\$590.00
NO	PAR	742963965	P	METROPLEX PATHOLOGY ASSOCIATES	P O BOX 840294	DALLAS	TX	75201	1	1	\$590.00
NO	PAR	751093698	P	PROPATH SERVICES LLP	PO BOX 678175	DALLAS	TX	75201	1	3	\$750.00
NO	NON-PAR	752938376	P	FIRST CHOICE AMBULANCE INC	PO Box 897	Lake City	SC	29560	1	4	\$484.00
NO	PAR	900610252	P	CROOK, SCOTT S	2061 LEXINGTON RD	NICHOLASVILLE	KY	40356	1	1	\$1,970.00
NO	NON-PAR	943210501	P	RAYTEL IMAGING NETWORK	PO Box 415435	Boston	MA	02241	1	1	\$1,350.00