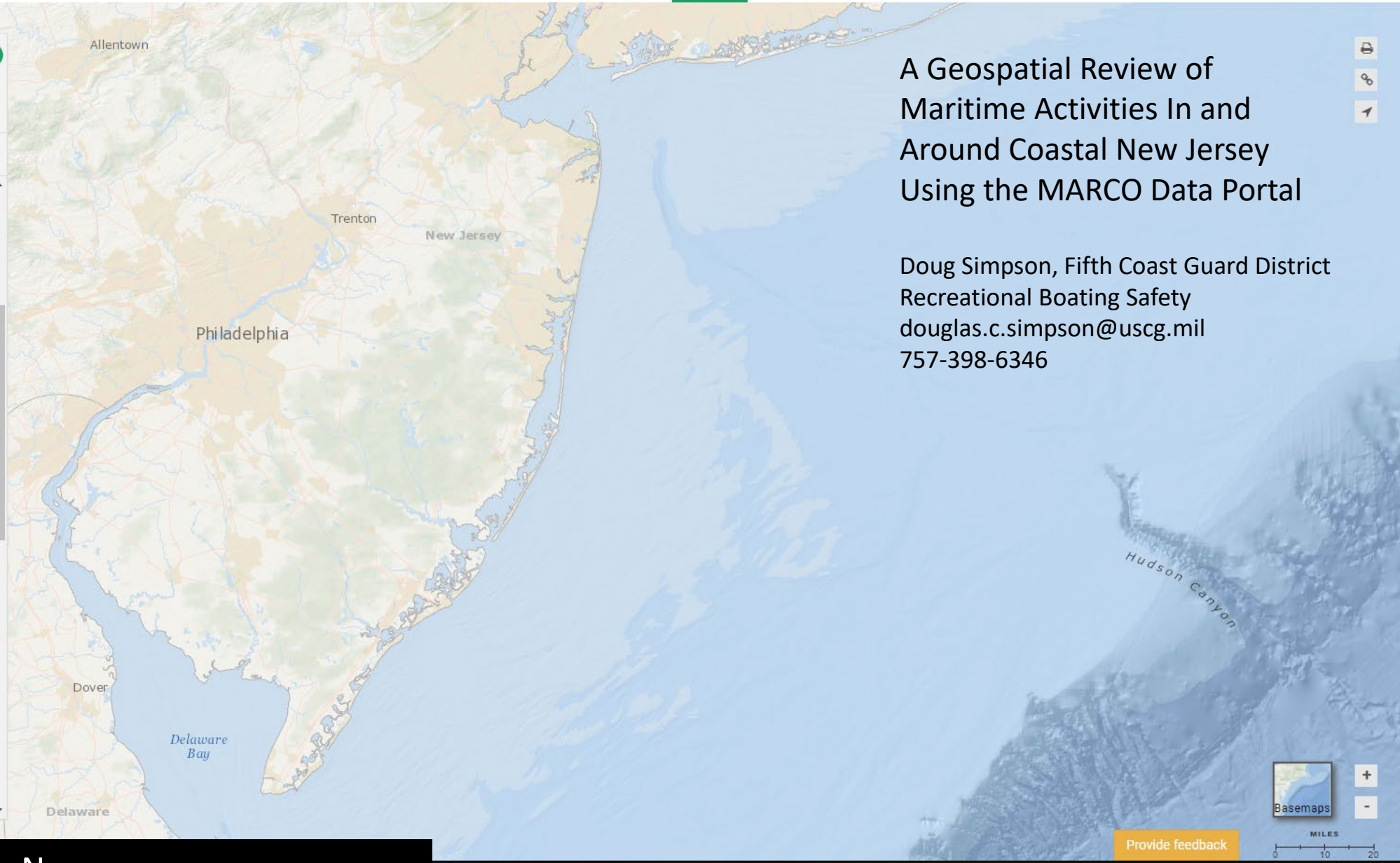


Search data

Active MyPlanner **Data** Legend

- Marine Life
- Marine Life Library (Species Specific)
- Maritime**
 - AIDS TO NAVIGATION
 - AIS VESSEL DENSITY (2011)
 - AIS VESSEL DENSITY (2012)
 - AIS VESSEL DENSITY (2013)
 - AIS VESSEL TRANSIT COUNTS (2013)
 - AIS VESSEL TRANSIT COUNTS (2015)
 - AIS VESSEL TRANSIT COUNTS (2016)
 - AIS VESSEL TRANSIT COUNTS (2017)
 - ANCHORAGE AREAS
 - FEDERAL OCS SAND AND GRAVEL BORROW (LEASE AREAS)
 - MAINTAINED CHANNELS
 - N. ATLANTIC RIGHT WHALE SMAS
 - NASCA SUBMARINE CABLES
 - OCEAN DISPOSAL SITES
 - OFFSHORE DISCHARGE FLOW
 - PILOT BOARDING AREAS

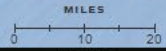
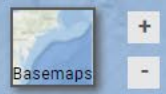


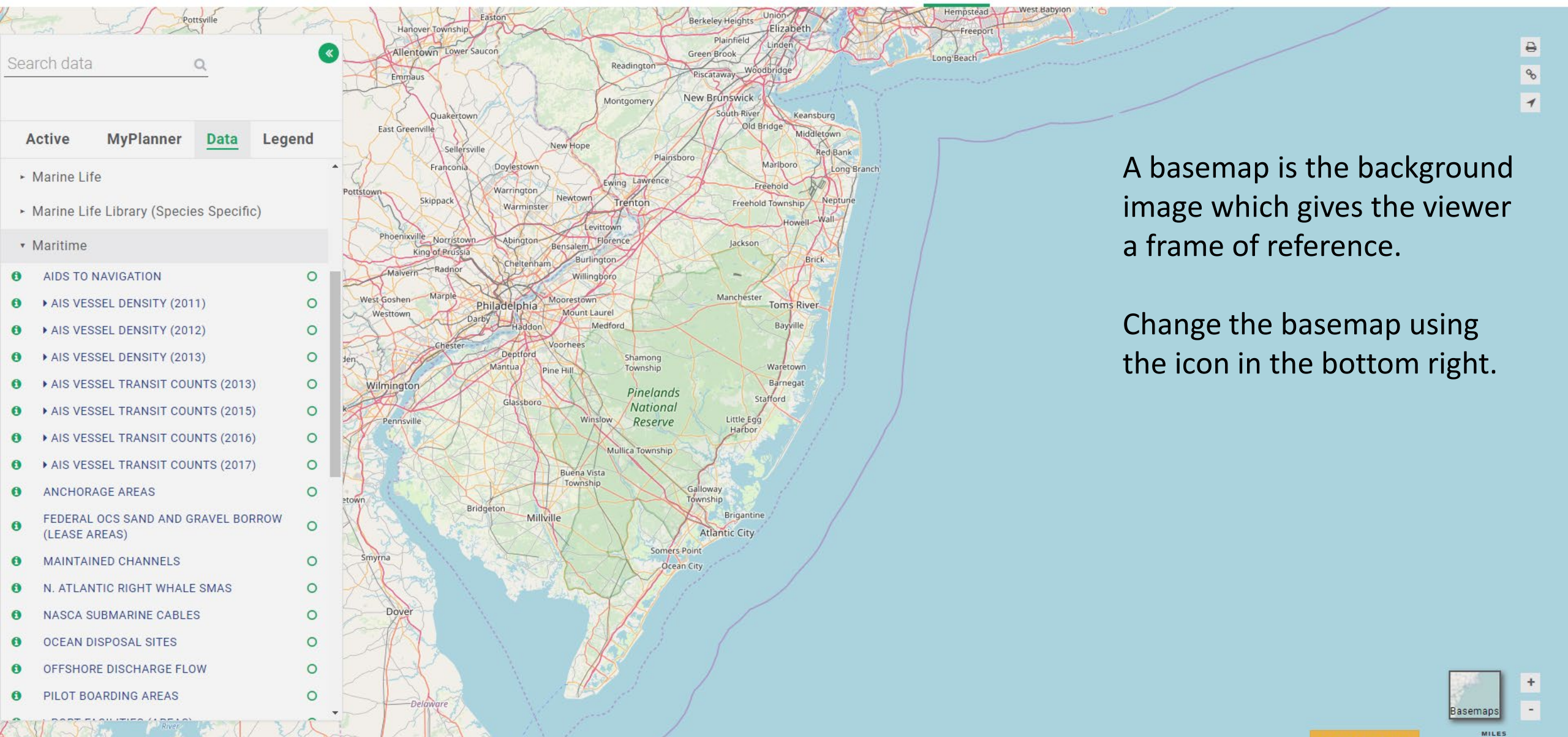
A Geospatial Review of Maritime Activities In and Around Coastal New Jersey Using the MARCO Data Portal

Doug Simpson, Fifth Coast Guard District
 Recreational Boating Safety
 douglas.c.simpson@uscg.mil
 757-398-6346

Basemap: Oceans Data: None

Provide feedback





A basemap is the background image which gives the viewer a frame of reference.

Change the basemap using the icon in the bottom right.

Basemap: Open Street Map Data: None

Provide feedback

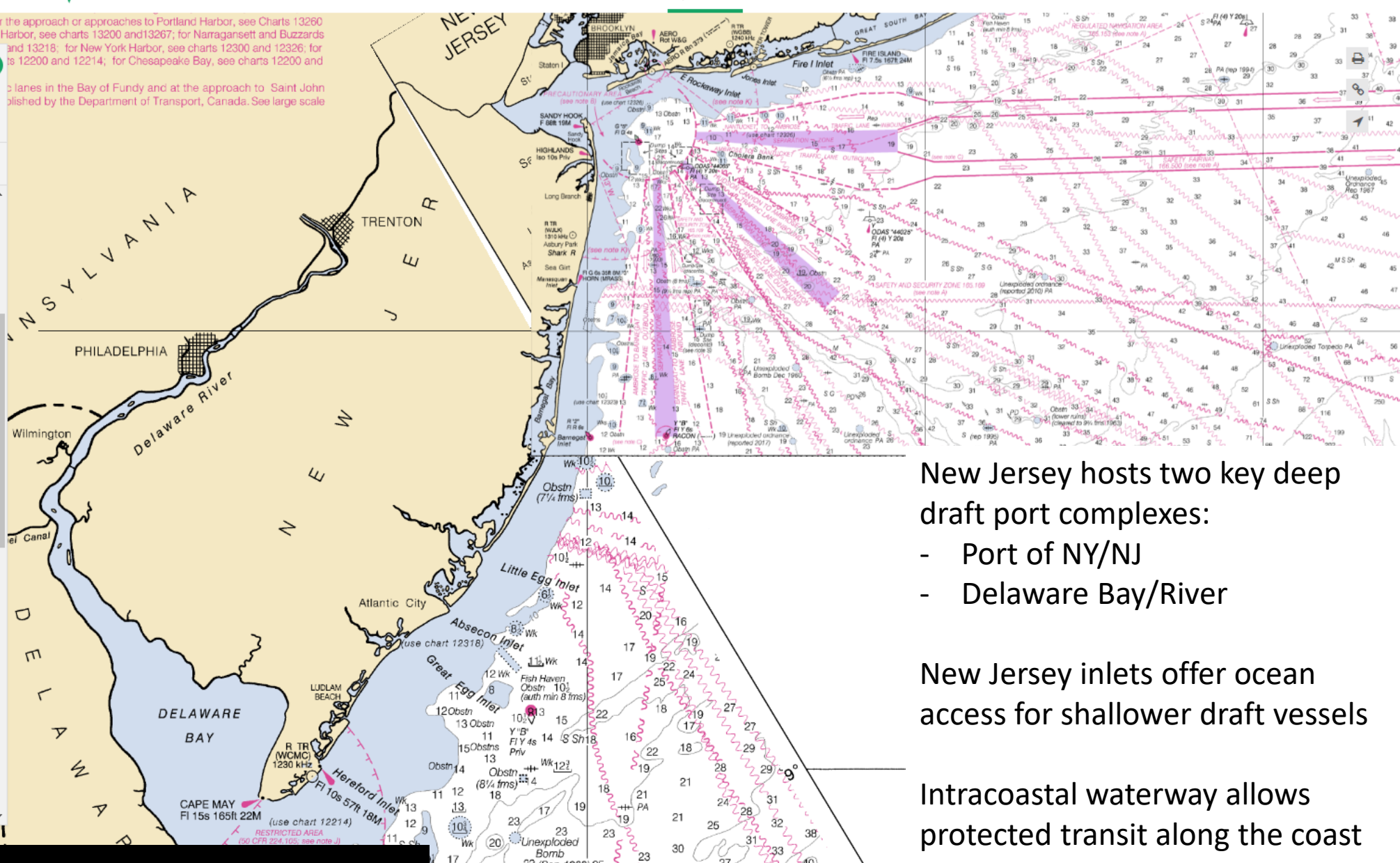
MILES 0 10 20

Basemaps + -

Search data

Active MyPlanner **Data** Legend

- Marine Life
- Marine Life Library (Species Specific)
- Maritime
 - AIDS TO NAVIGATION
 - AIS VESSEL DENSITY (2011)
 - AIS VESSEL DENSITY (2012)
 - AIS VESSEL DENSITY (2013)
 - AIS VESSEL TRANSIT COUNTS (2013)
 - AIS VESSEL TRANSIT COUNTS (2015)
 - AIS VESSEL TRANSIT COUNTS (2016)
 - AIS VESSEL TRANSIT COUNTS (2017)
 - ANCHORAGE AREAS
 - FEDERAL OCS SAND AND GRAVEL BORROW (LEASE AREAS)
 - MAINTAINED CHANNELS
 - N. ATLANTIC RIGHT WHALE SMAS
 - NASCA SUBMARINE CABLES
 - OCEAN DISPOSAL SITES
 - OFFSHORE DISCHARGE FLOW
 - PILOT BOARDING AREAS



New Jersey hosts two key deep draft port complexes:

- Port of NY/NJ
- Delaware Bay/River

New Jersey inlets offer ocean access for shallower draft vessels

Intracoastal waterway allows protected transit along the coast

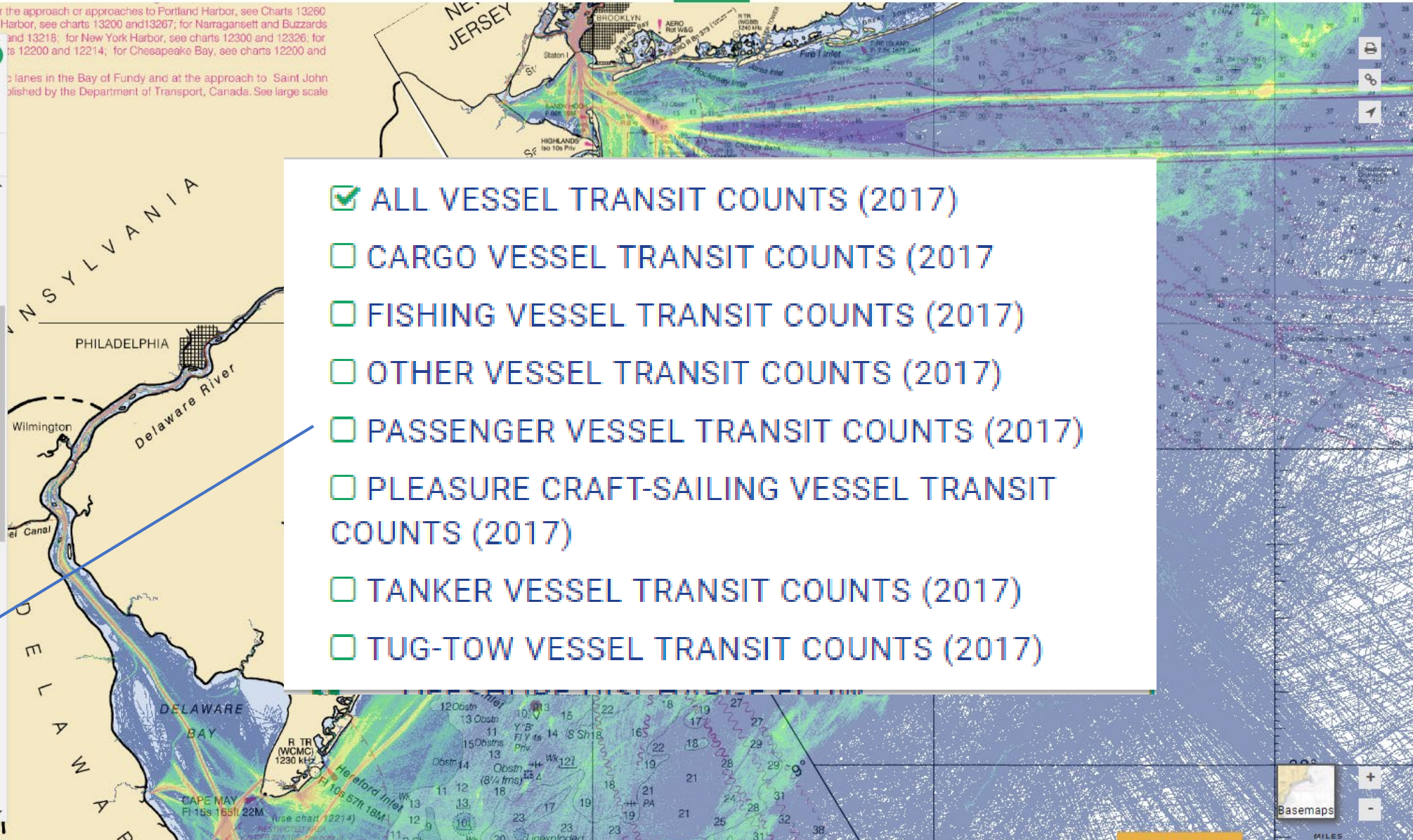
Search data

Active • 1 MyPlanner **Data** Legend

- Marine Life
- Marine Life Library (Species Specific)
- Maritime
 - AIDS TO NAVIGATION
 - AIS VESSEL DENSITY (2011)
 - AIS VESSEL DENSITY (2012)
 - AIS VESSEL DENSITY (2013)
 - AIS VESSEL TRANSIT COUNTS (2013)
 - AIS VESSEL TRANSIT COUNTS (2015)
 - AIS VESSEL TRANSIT COUNTS (2016)
 - AIS VESSEL TRANSIT COUNTS (2017)
 - ALL VESSEL TRANSIT COUNTS (2017)
 - CARGO VESSEL TRANSIT COUNTS (2017)
 - FISHING VESSEL TRANSIT COUNTS (2017)
 - OTHER VESSEL TRANSIT COUNTS (2017)
 - PASSENGER VESSEL TRANSIT COUNTS (2017)
 - PLEASURE CRAFT-SAILING VESSEL TRANSIT COUNTS (2017)
 - TANKER VESSEL TRANSIT COUNTS (2017)
 - TUG-TOW VESSEL TRANSIT COUNTS (2017)
 - OFFSHORE DISCHARGE FLOW
 - PILOT BOARDING AREAS

Chesapeake Bays. For the approach or approaches to Portland Harbor, see Charts 13260 and 13286; for Boston Harbor, see charts 13200 and 13267; for Narragansett and Buzzards and 13218; for New York Harbor, see charts 12300 and 12326; for ... for 12200 and 12214; for Chesapeake Bay, see charts 12200 and

lanes in the Bay of Fundy and at the approach to Saint John published by the Department of Transport, Canada. See large scale

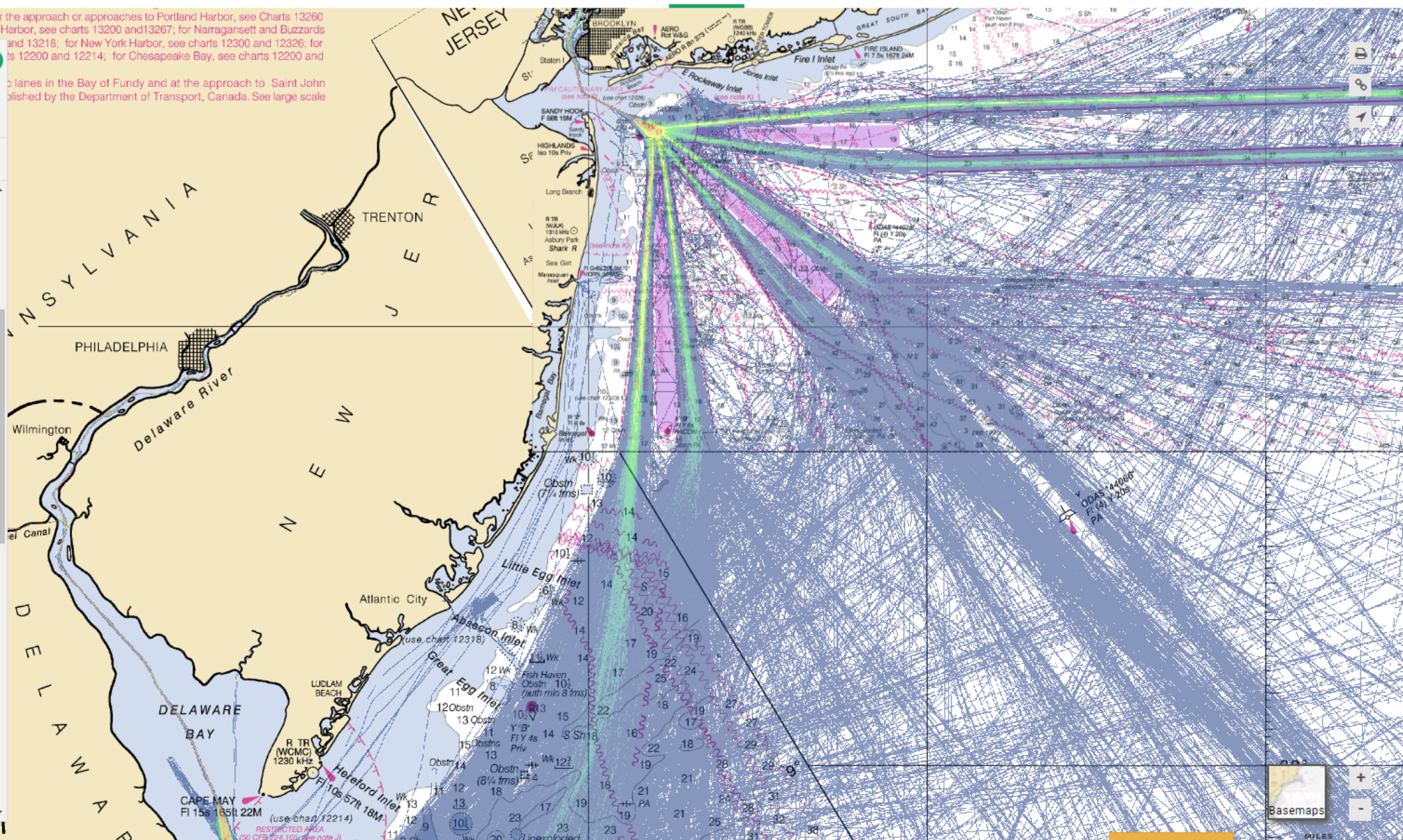


- ALL VESSEL TRANSIT COUNTS (2017)
- CARGO VESSEL TRANSIT COUNTS (2017)
- FISHING VESSEL TRANSIT COUNTS (2017)
- OTHER VESSEL TRANSIT COUNTS (2017)
- PASSENGER VESSEL TRANSIT COUNTS (2017)
- PLEASURE CRAFT-SAILING VESSEL TRANSIT COUNTS (2017)
- TANKER VESSEL TRANSIT COUNTS (2017)
- TUG-TOW VESSEL TRANSIT COUNTS (2017)

Search data

Active • 1 MyPlanner **Data** Legend

- Marine Life
- Marine Life Library (Species Specific)
- Maritime
 - AIDS TO NAVIGATION
 - AIS VESSEL DENSITY (2011)
 - AIS VESSEL DENSITY (2012)
 - AIS VESSEL DENSITY (2013)
 - AIS VESSEL TRANSIT COUNTS (2013)
 - AIS VESSEL TRANSIT COUNTS (2015)
 - AIS VESSEL TRANSIT COUNTS (2016)
 - AIS VESSEL TRANSIT COUNTS (2017)
 - ALL VESSEL TRANSIT COUNTS (2017)
 - CARGO VESSEL TRANSIT COUNTS (2017)
 - FISHING VESSEL TRANSIT COUNTS (2017)
 - OTHER VESSEL TRANSIT COUNTS (2017)
 - PASSENGER VESSEL TRANSIT COUNTS (2017)
 - PLEASURE CRAFT-SAILING VESSEL TRANSIT COUNTS (2017)
 - TANKER VESSEL TRANSIT COUNTS (2017)
 - TUG-TOW VESSEL TRANSIT COUNTS (2017)
 - OFFSHORE DISCHARGE FLOW
 - PILOT BOARDING AREAS



Basemap: Nautical Charts Data: Cargo Vessel Transit Counts (2017)

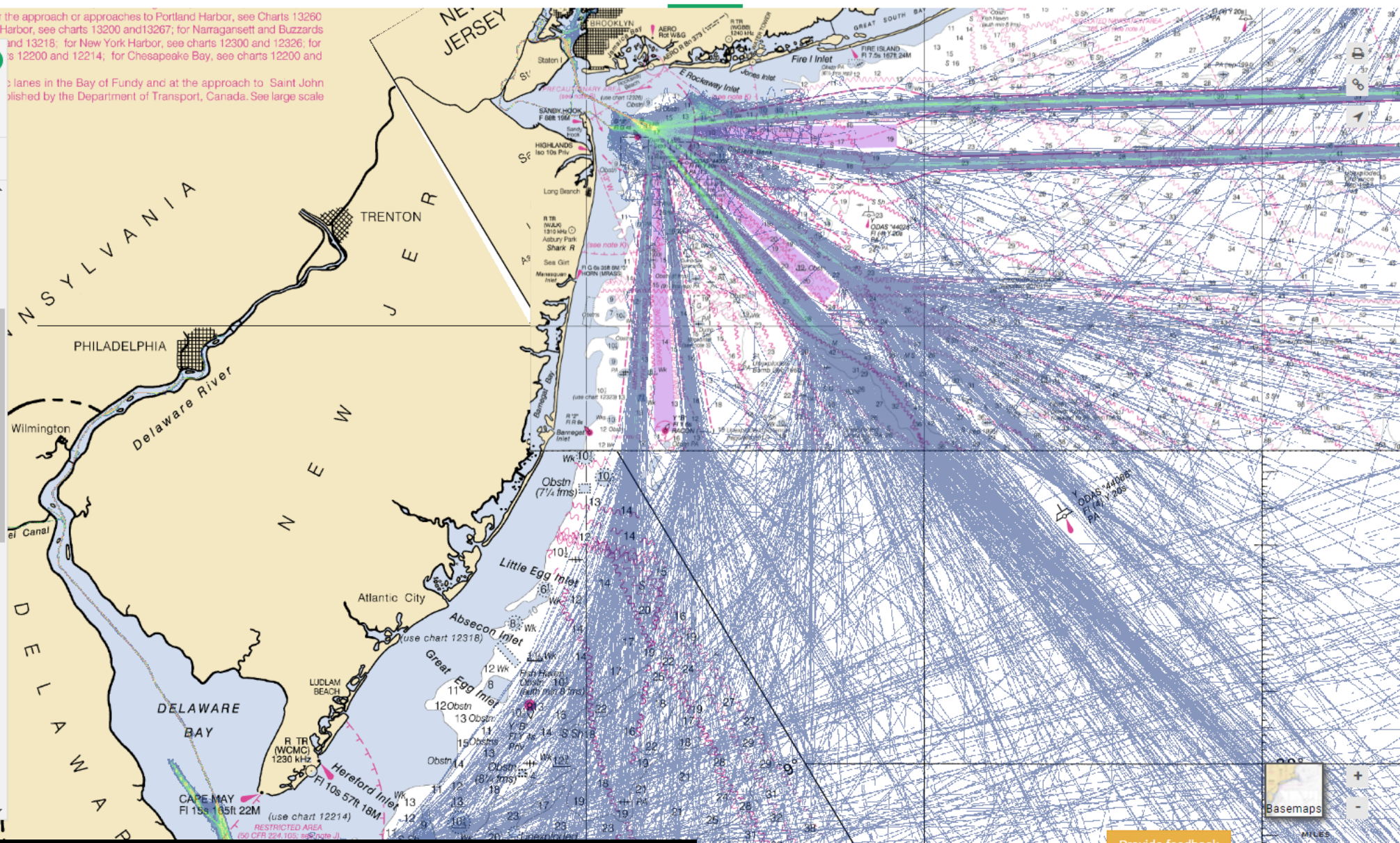
Search data

Active • 1 MyPlanner **Data** Legend

- Marine Life
- Marine Life Library (Species Specific)
- Maritime
 - AIDS TO NAVIGATION
 - AIS VESSEL DENSITY (2011)
 - AIS VESSEL DENSITY (2012)
 - AIS VESSEL DENSITY (2013)
 - AIS VESSEL TRANSIT COUNTS (2013)
 - AIS VESSEL TRANSIT COUNTS (2015)
 - AIS VESSEL TRANSIT COUNTS (2016)
 - AIS VESSEL TRANSIT COUNTS (2017)
 - ALL VESSEL TRANSIT COUNTS (2017)
 - CARGO VESSEL TRANSIT COUNTS (2017)
 - FISHING VESSEL TRANSIT COUNTS (2017)
 - OTHER VESSEL TRANSIT COUNTS (2017)
 - PASSENGER VESSEL TRANSIT COUNTS (2017)
 - PLEASURE CRAFT-SAILING VESSEL TRANSIT COUNTS (2017)
 - TANKER VESSEL TRANSIT COUNTS (2017)
 - TUG-TOW VESSEL TRANSIT COUNTS (2017)
 - OFFSHORE DISCHARGE FLOW
 - PILOT BOARDING AREAS

Chesapeake Bays. For the approach or approaches to Portland Harbor, see Charts 13260 and 13286, for Boston Harbor, see charts 13200 and 13267, for Narragansett and Buzzards and 13218; for New York Harbor, see charts 12300 and 12326, for charts 12200 and 12214; for Chesapeake Bay, see charts 12200 and

lanes in the Bay of Fundy and at the approach to Saint John published by the Department of Transport, Canada. See large scale



Basemap: Nautical Charts Data: Tanker Vessel Transit Counts (2017)

Provide feedback

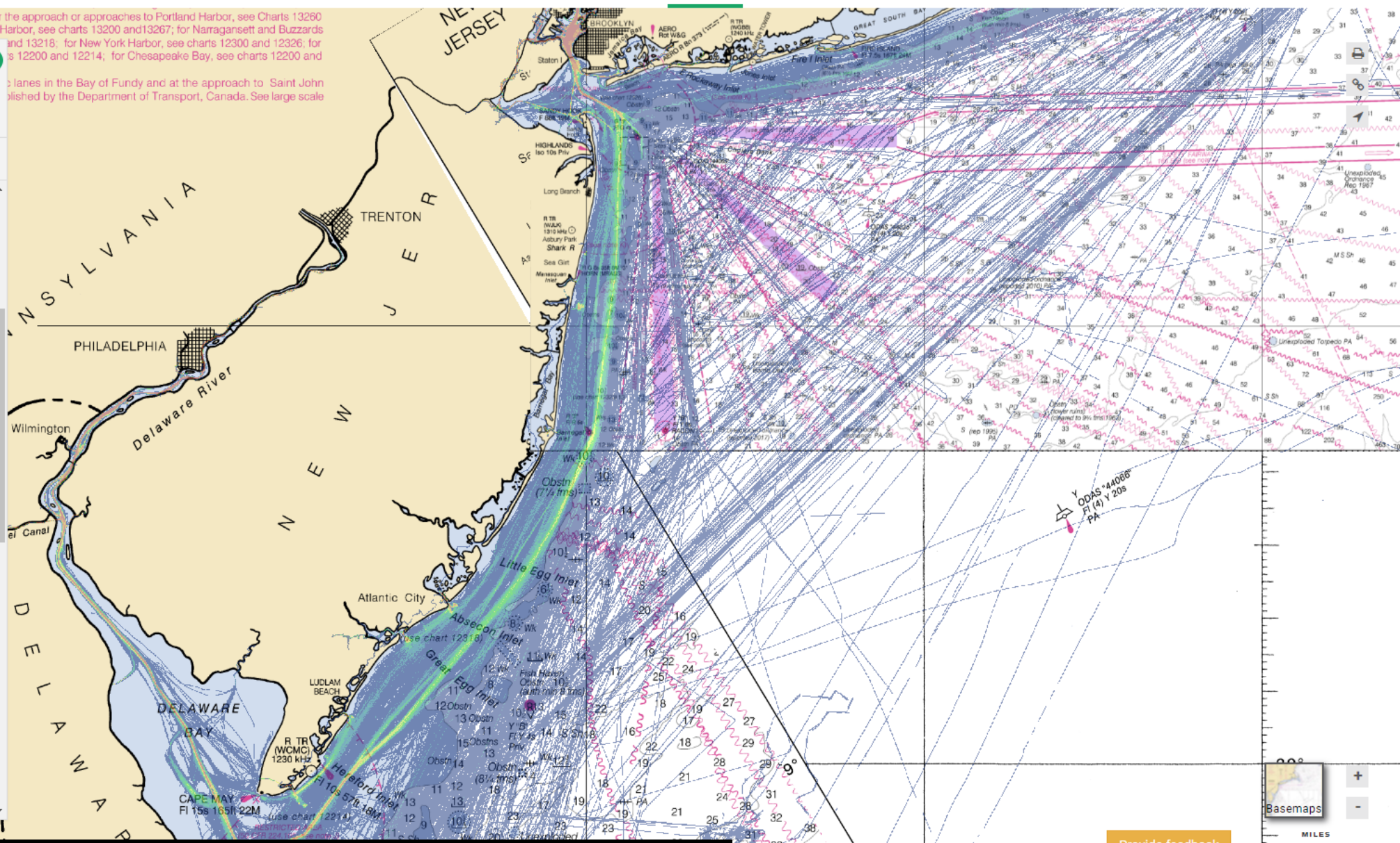
Search data

Active • 1 MyPlanner **Data** Legend

- Marine Life
- Marine Life Library (Species Specific)
- Maritime
 - AIDS TO NAVIGATION
 - AIS VESSEL DENSITY (2011)
 - AIS VESSEL DENSITY (2012)
 - AIS VESSEL DENSITY (2013)
 - AIS VESSEL TRANSIT COUNTS (2013)
 - AIS VESSEL TRANSIT COUNTS (2015)
 - AIS VESSEL TRANSIT COUNTS (2016)
 - AIS VESSEL TRANSIT COUNTS (2017)
 - ALL VESSEL TRANSIT COUNTS (2017)
 - CARGO VESSEL TRANSIT COUNTS (2017)
 - FISHING VESSEL TRANSIT COUNTS (2017)
 - OTHER VESSEL TRANSIT COUNTS (2017)
 - PASSENGER VESSEL TRANSIT COUNTS (2017)
 - PLEASURE CRAFT-SAILING VESSEL TRANSIT COUNTS (2017)
 - TANKER VESSEL TRANSIT COUNTS (2017)
 - TUG-TOW VESSEL TRANSIT COUNTS (2017)
 - OFFSHORE DISCHARGE FLOW
 - PILOT BOARDING AREAS

Chesapeake Bays. For the approach or approaches to Portland Harbor, see Charts 13260 and 13286; for Boston Harbor, see charts 13200 and 13267; for Narragansett and Buzzards and 13218; for New York Harbor, see charts 12300 and 12326; for ... 12200 and 12214; for Chesapeake Bay, see charts 12200 and ...

lanes in the Bay of Fundy and at the approach to Saint John ... lished by the Department of Transport, Canada. See large scale



Basemap: Nautical Charts Data: Tug-Tow Vessel Transit Counts (2017)

Provide feedback

Basemaps

MILES 0 10 20

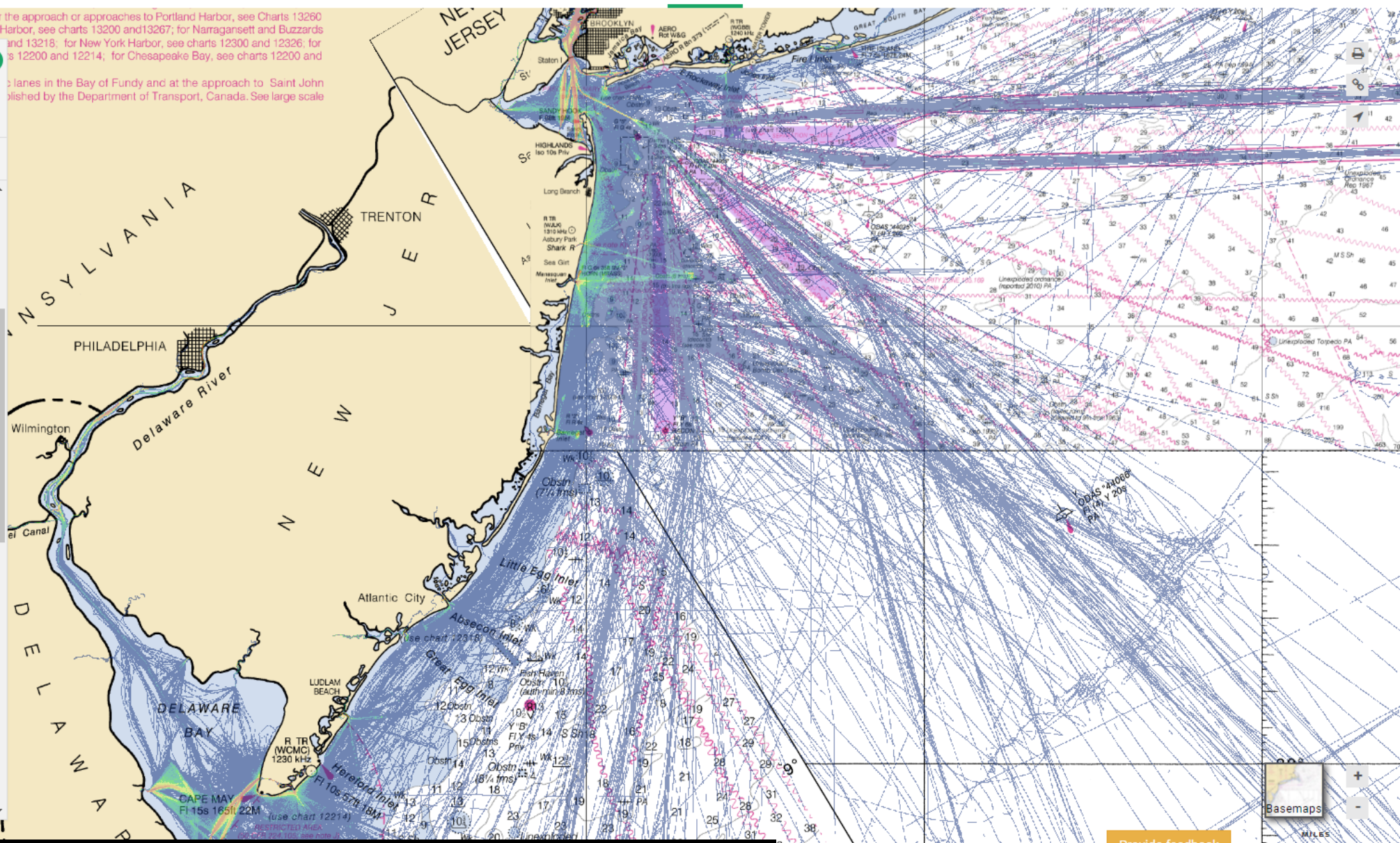
Search data

Active • 1 MyPlanner **Data** Legend

- Marine Life
- Marine Life Library (Species Specific)
- Maritime
 - AIDS TO NAVIGATION
 - AIS VESSEL DENSITY (2011)
 - AIS VESSEL DENSITY (2012)
 - AIS VESSEL DENSITY (2013)
 - AIS VESSEL TRANSIT COUNTS (2013)
 - AIS VESSEL TRANSIT COUNTS (2015)
 - AIS VESSEL TRANSIT COUNTS (2016)
 - AIS VESSEL TRANSIT COUNTS (2017)
 - ALL VESSEL TRANSIT COUNTS (2017)
 - CARGO VESSEL TRANSIT COUNTS (2017)
 - FISHING VESSEL TRANSIT COUNTS (2017)
 - OTHER VESSEL TRANSIT COUNTS (2017)
 - PASSENGER VESSEL TRANSIT COUNTS (2017)
 - PLEASURE CRAFT-SAILING VESSEL TRANSIT COUNTS (2017)
 - TANKER VESSEL TRANSIT COUNTS (2017)
 - TUG-TOW VESSEL TRANSIT COUNTS (2017)
 - OFFSHORE DISCHARGE FLOW
 - PILOT BOARDING AREAS

Chesapeake Bays. For the approach or approaches to Portland Harbor, see Charts 13260 and 13286; for Boston Harbor, see charts 13200 and 13267; for Narragansett and Buzzards and 13218; for New York Harbor, see charts 12300 and 12326; for ... 12200 and 12214; for Chesapeake Bay, see charts 12200 and ...

lanes in the Bay of Fundy and at the approach to Saint John ... lished by the Department of Transport, Canada. See large scale



Basemap: Nautical Charts Data: Passenger Vessel Transit Counts (2017)

Provide feedback

Basemaps

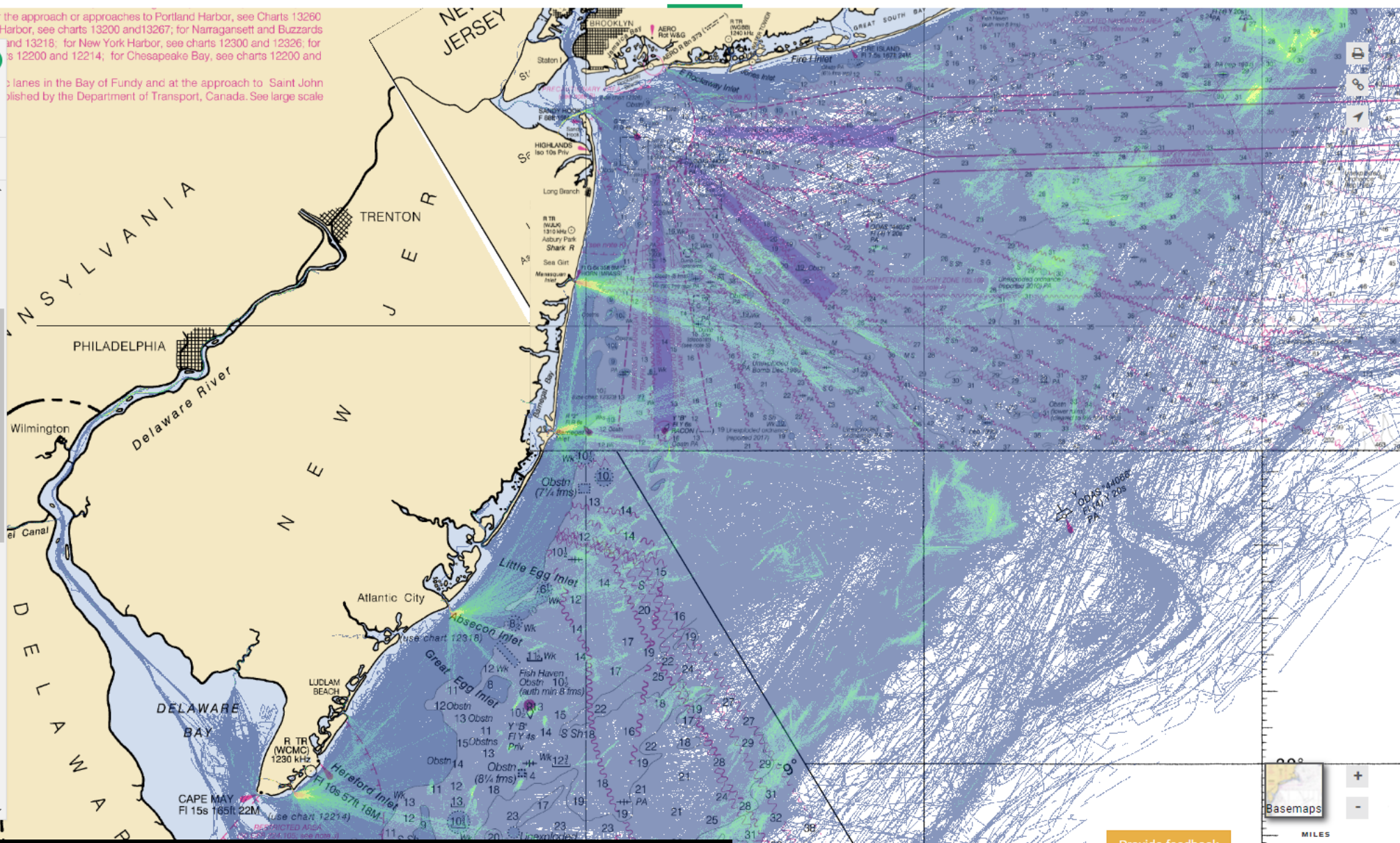
MILES

9:59 PM 10/8/2018

Search data

Active • 1 MyPlanner **Data** Legend

- Marine Life
- Marine Life Library (Species Specific)
- Maritime
 - AIDS TO NAVIGATION
 - AIS VESSEL DENSITY (2011)
 - AIS VESSEL DENSITY (2012)
 - AIS VESSEL DENSITY (2013)
 - AIS VESSEL TRANSIT COUNTS (2013)
 - AIS VESSEL TRANSIT COUNTS (2015)
 - AIS VESSEL TRANSIT COUNTS (2016)
 - AIS VESSEL TRANSIT COUNTS (2017)
 - ALL VESSEL TRANSIT COUNTS (2017)
 - CARGO VESSEL TRANSIT COUNTS (2017)
 - FISHING VESSEL TRANSIT COUNTS (2017)
 - OTHER VESSEL TRANSIT COUNTS (2017)
 - PASSENGER VESSEL TRANSIT COUNTS (2017)
 - PLEASURE CRAFT-SAILING VESSEL TRANSIT COUNTS (2017)
 - TANKER VESSEL TRANSIT COUNTS (2017)
 - TUG-TOW VESSEL TRANSIT COUNTS (2017)
 - OFFSHORE DISCHARGE FLOW
 - PILOT BOARDING AREAS



Basemap: Nautical Charts Data: Fishing Vessel Transit Counts (2017)

Provide feedback

Basemaps

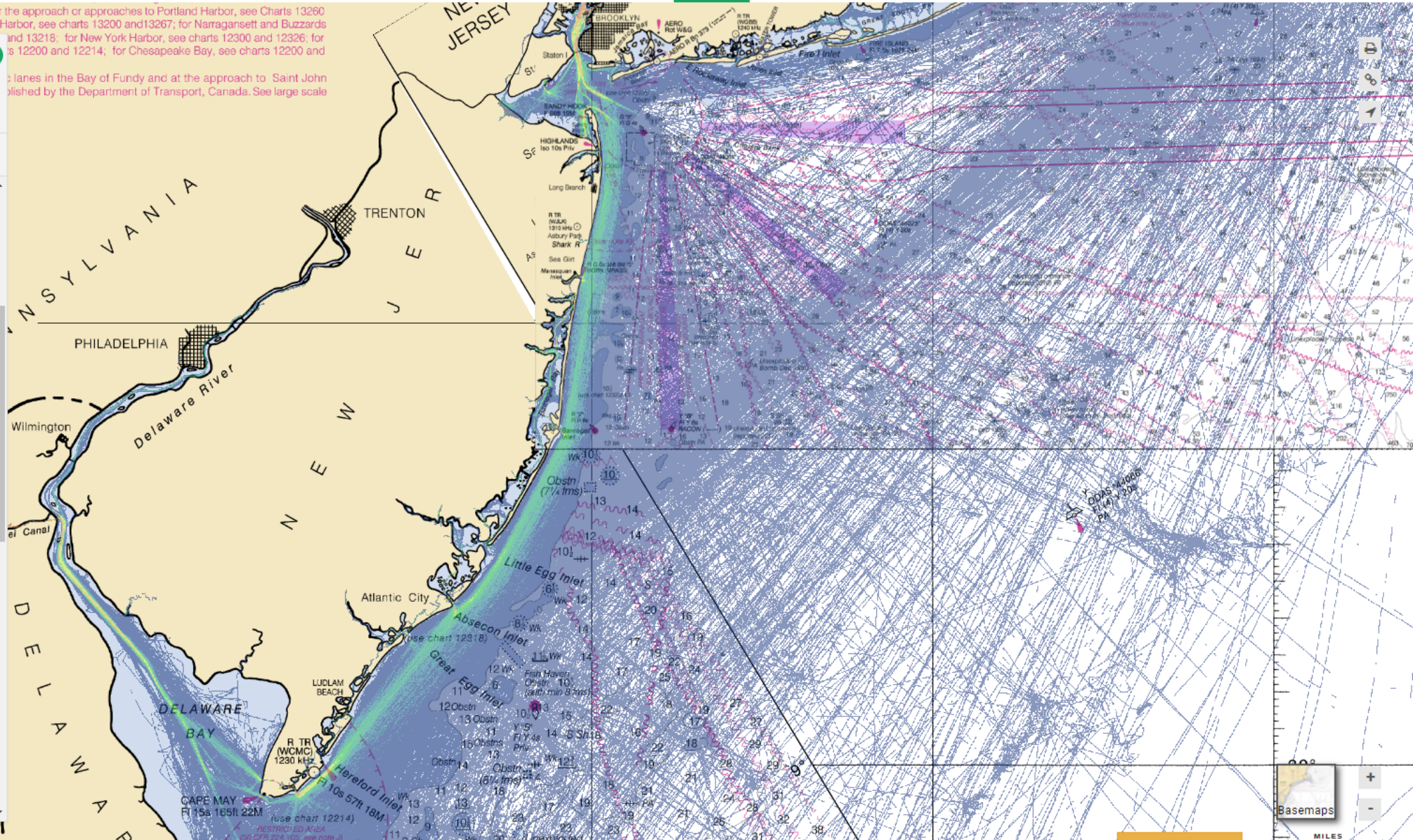
MILES 0 10 20

Search data

Active • 1 MyPlanner **Data** Legend

- Marine Life
- Marine Life Library (Species Specific)
- Maritime
 - AIDS TO NAVIGATION
 - AIS VESSEL DENSITY (2011)
 - AIS VESSEL DENSITY (2012)
 - AIS VESSEL DENSITY (2013)
 - AIS VESSEL TRANSIT COUNTS (2013)
 - AIS VESSEL TRANSIT COUNTS (2015)
 - AIS VESSEL TRANSIT COUNTS (2016)
 - AIS VESSEL TRANSIT COUNTS (2017)
 - ANCHORAGE AREAS
 - FEDERAL OCS SAND AND GRAVEL BORROW (LEASE AREAS)
 - MAINTAINED CHANNELS
 - N. ATLANTIC RIGHT WHALE SMAS
 - NASCA SUBMARINE CABLES
 - OCEAN DISPOSAL SITES
 - OFFSHORE DISCHARGE FLOW
 - PILOT BOARDING AREAS

Chesapeake Bays. For the approach or approaches to Portland Harbor, see Charts 13260 and 13286, for Boston Harbor, see charts 13200 and 13267, for Narragansett and Buzzards and 13218; for New York Harbor, see charts 12300 and 12326; for ... s 12200 and 12214; for Chesapeake Bay, see charts 12200 and



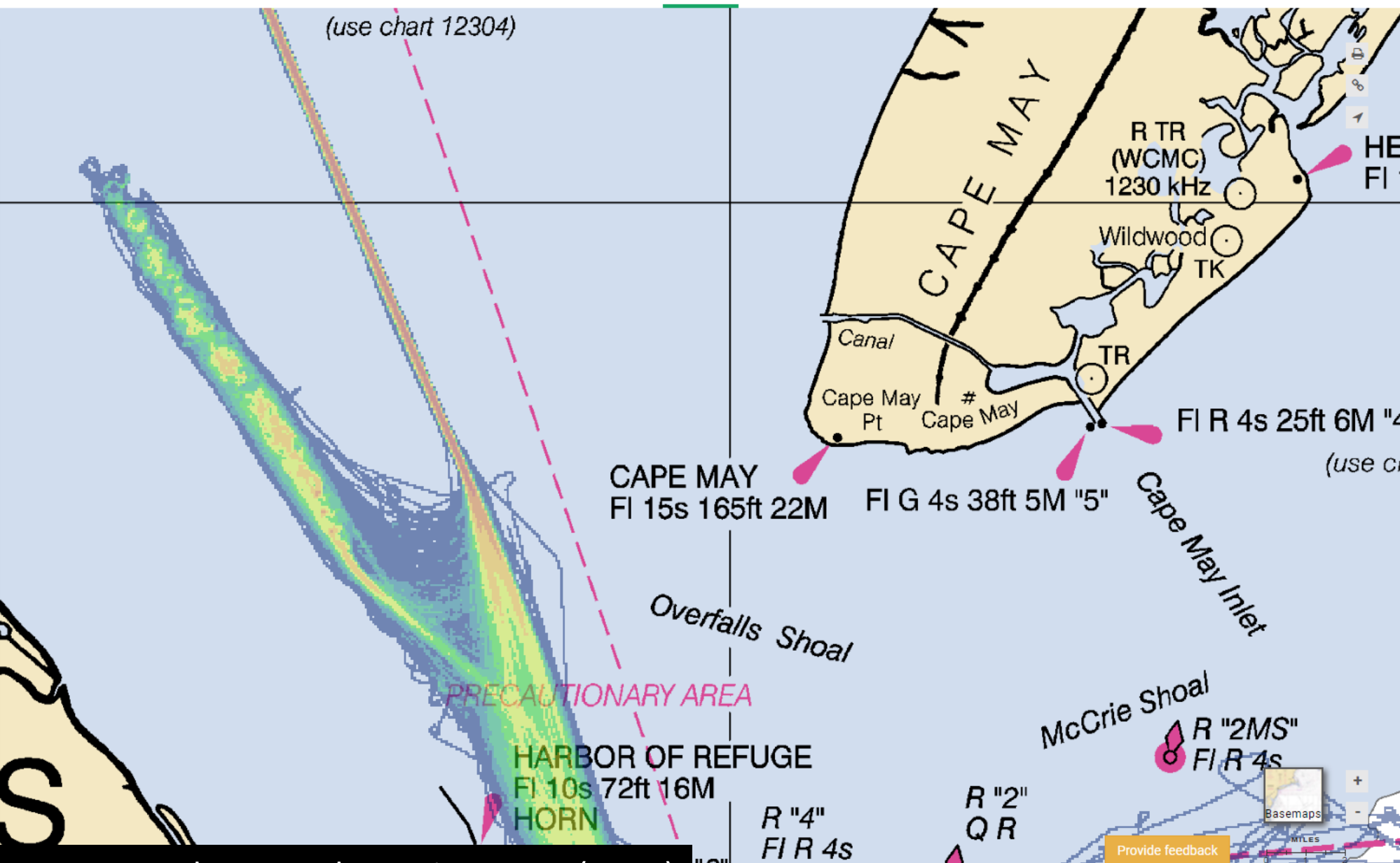
Basemap: Nautical Charts Data: Pleasure Craft - Sailing Vessel Transit Counts (2017)

Provide feedback

Search data

Active • 1 MyPlanner **Data** Legend

- ▶ AIS VESSEL DENSITY (2013)
- ▶ AIS VESSEL TRANSIT COUNTS (2013)
- ▶ AIS VESSEL TRANSIT COUNTS (2015)
- ▶ AIS VESSEL TRANSIT COUNTS (2016)
- ▶ AIS VESSEL TRANSIT COUNTS (2017)
- ANCHORAGE AREAS
- FEDERAL OCS SAND AND GRAVEL BORROW (LEASE AREAS)
- MAINTAINED CHANNELS
- N. ATLANTIC RIGHT WHALE SMAS
- NASCA SUBMARINE CABLES
- OCEAN DISPOSAL SITES
- OFFSHORE DISCHARGE FLOW
- PILOT BOARDING AREAS
- ▶ PORT FACILITIES (AREAS)
- ▶ PORT FACILITIES (POINTS)
- ROUTING MEASURES
- SHIPWRECK DENSITY
- Oceanography
- Recreation

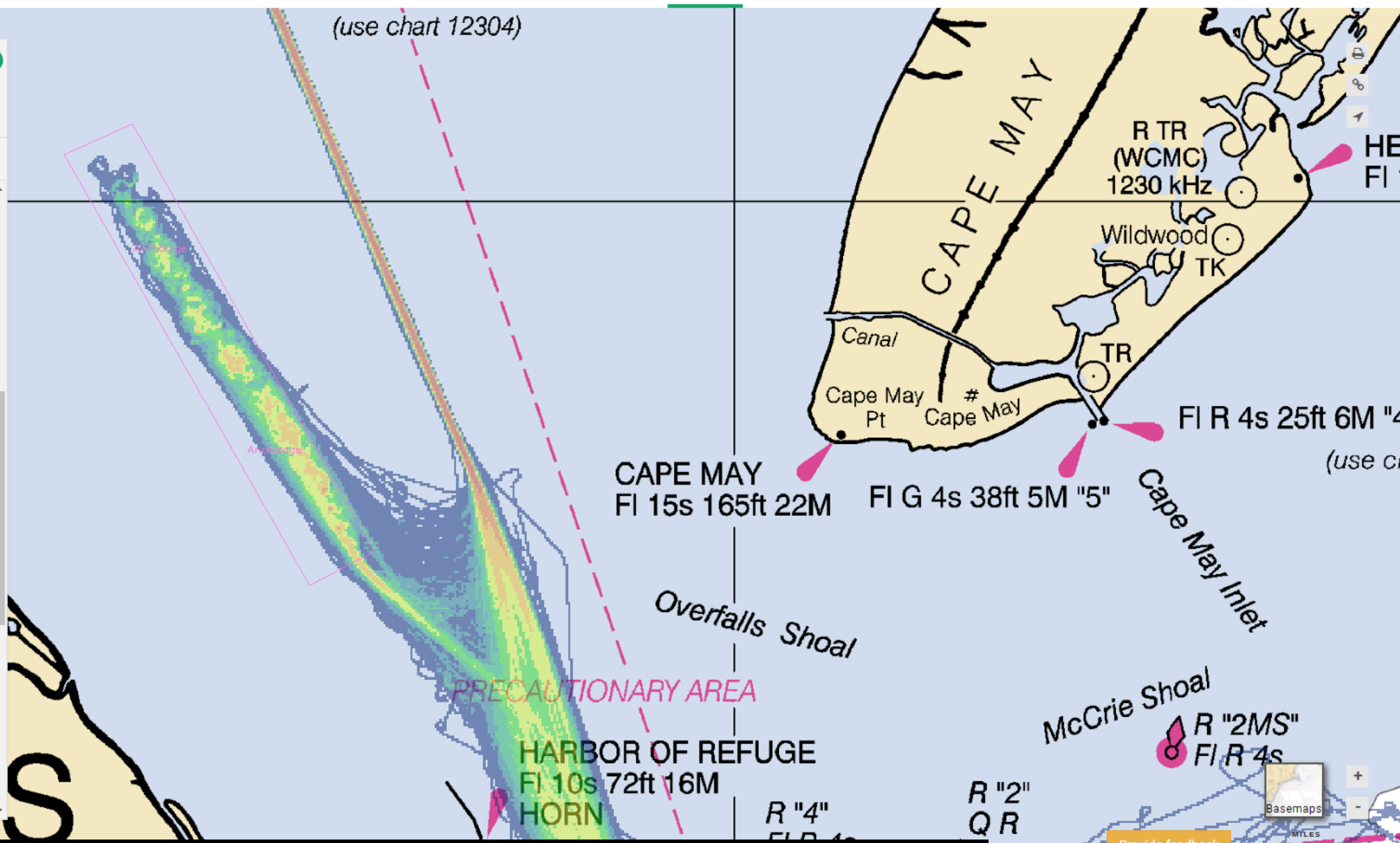


Search data

Active • 2 MyPlanner Data Legend

- ▶ AIS VESSEL DENSITY (2015)
- ▶ AIS VESSEL TRANSIT COUNTS (2013)
- ▶ AIS VESSEL TRANSIT COUNTS (2015)
- ▶ AIS VESSEL TRANSIT COUNTS (2016)
- ▶ AIS VESSEL TRANSIT COUNTS (2017)
- ANCHORAGE AREAS
- FEDERAL OCS SAND AND GRAVEL BORROW (LEASE AREAS)
- MAINTAINED CHANNELS
- N. ATLANTIC RIGHT WHALE SMAS
- NASCA SUBMARINE CABLES
- OCEAN DISPOSAL SITES
- OFFSHORE DISCHARGE FLOW
- PILOT BOARDING AREAS
- ▶ PORT FACILITIES (AREAS)
- ▶ PORT FACILITIES (POINTS)
- ROUTING MEASURES
- SHIPWRECK DENSITY

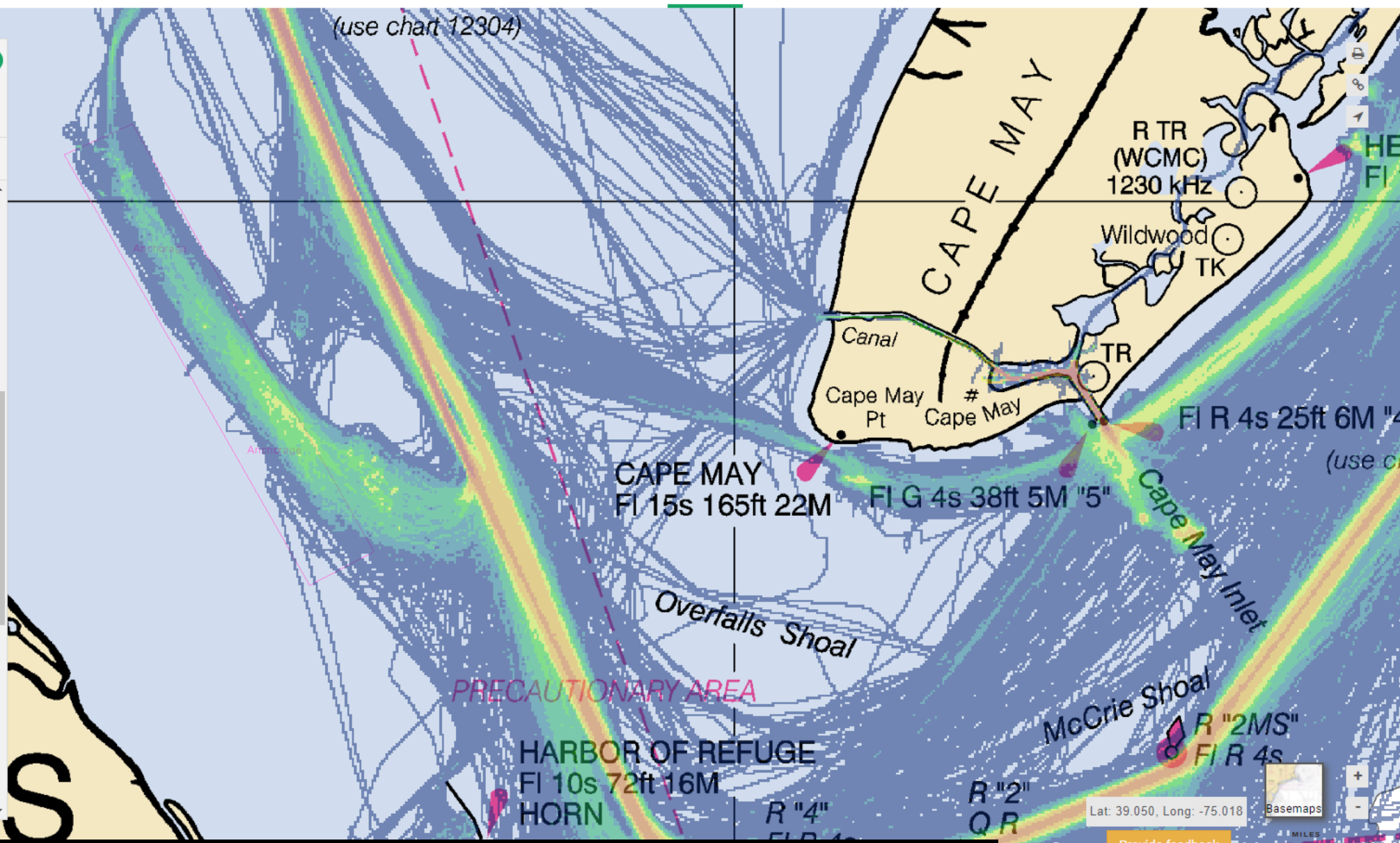
Oceanography
Recreation
Renewable Energy



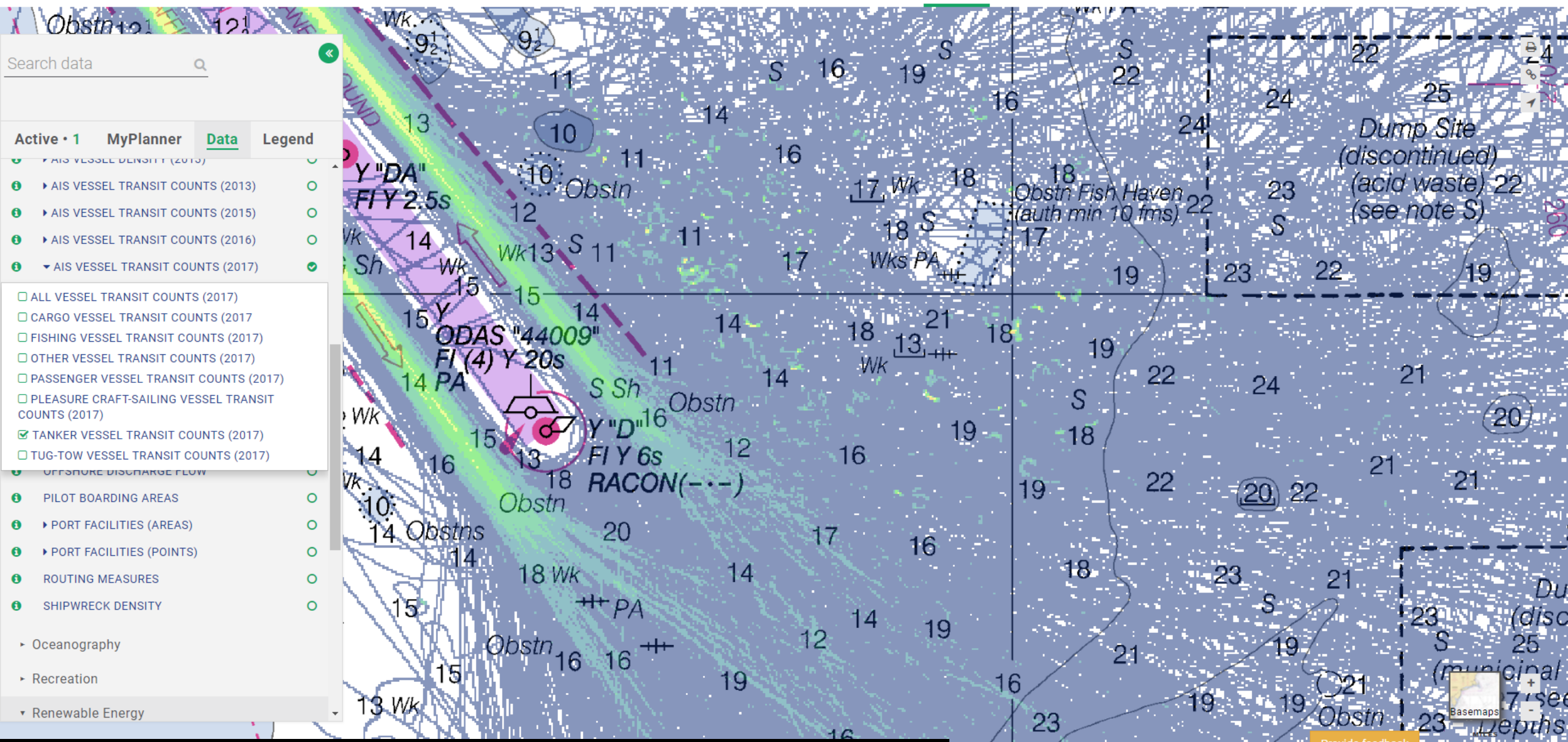
Search data

Active • 2 MyPlanner Data Legend

- ▶ AIS VESSEL DENSITY (2015)
- ▶ AIS VESSEL TRANSIT COUNTS (2013)
- ▶ AIS VESSEL TRANSIT COUNTS (2015)
- ▶ AIS VESSEL TRANSIT COUNTS (2016)
- ▶ AIS VESSEL TRANSIT COUNTS (2017)
- ALL VESSEL TRANSIT COUNTS (2017)
- CARGO VESSEL TRANSIT COUNTS (2017)
- FISHING VESSEL TRANSIT COUNTS (2017)
- OTHER VESSEL TRANSIT COUNTS (2017)
- PASSENGER VESSEL TRANSIT COUNTS (2017)
- PLEASURE CRAFT-SAILING VESSEL TRANSIT COUNTS (2017)
- TANKER VESSEL TRANSIT COUNTS (2017)
- ✓ TUG-TOW VESSEL TRANSIT COUNTS (2017)
- OFFSHORE DISCHARGE FLOW
- PILOT BOARDING AREAS
- ▶ PORT FACILITIES (AREAS)
- ▶ PORT FACILITIES (POINTS)
- ROUTING MEASURES
- SHIPWRECK DENSITY
- Oceanography
- Recreation
- Renewable Energy



Basemap: Nautical Charts Data: Tug-Tow Vessel Transit Counts (2017), Anchorage Areas



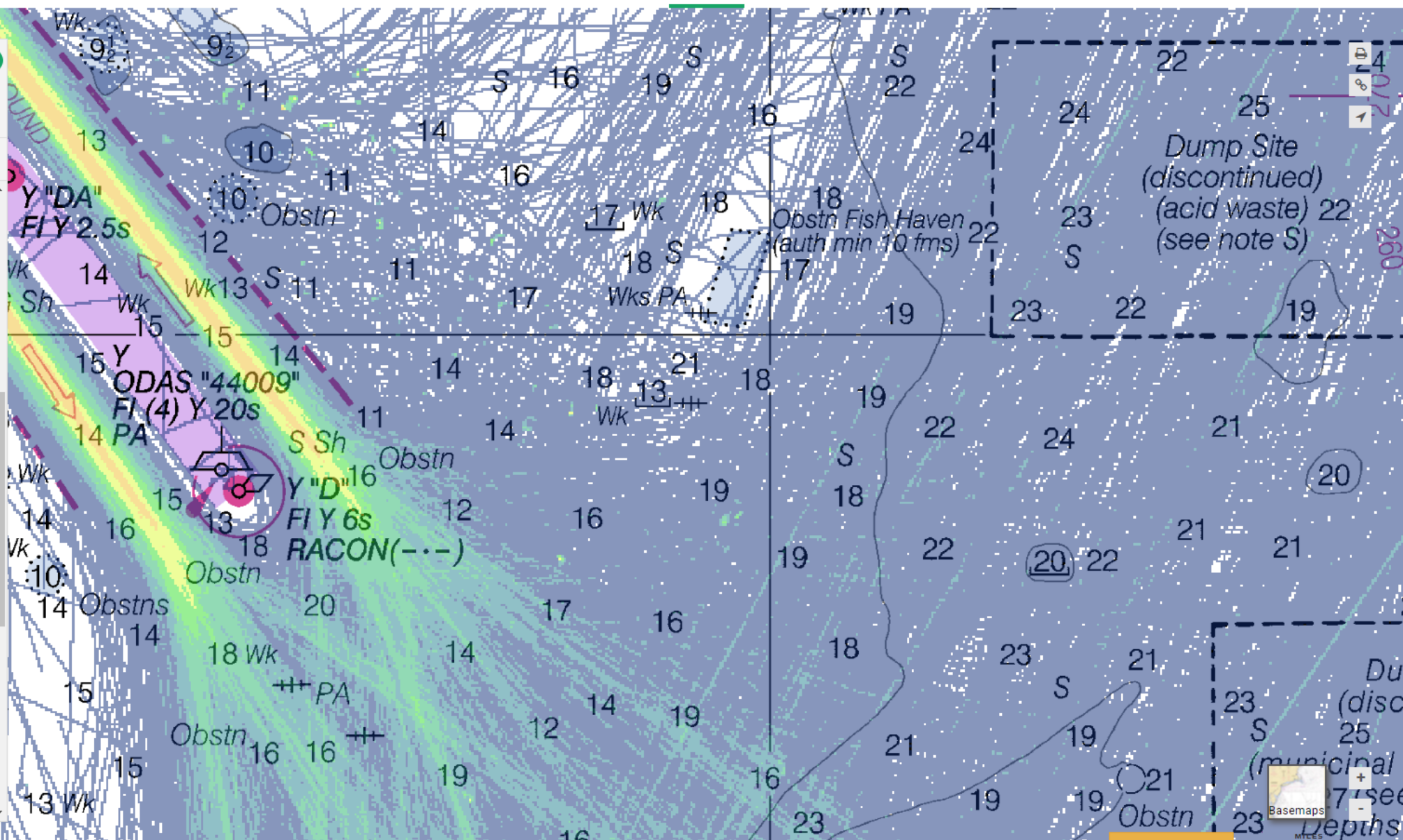
Basemap: Nautical Charts Data: Tanker Vessel Transit Counts (2017)

Provide feedback

Search data

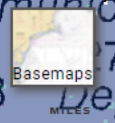
Active • 1 MyPlanner Data Legend

- ▶ AIS VESSEL DENSITY (2015)
- ▶ AIS VESSEL TRANSIT COUNTS (2013)
- ▶ AIS VESSEL TRANSIT COUNTS (2015)
- ▶ AIS VESSEL TRANSIT COUNTS (2016)
- ▶ AIS VESSEL TRANSIT COUNTS (2017)
- ALL VESSEL TRANSIT COUNTS (2017)
- CARGO VESSEL TRANSIT COUNTS (2017)
- FISHING VESSEL TRANSIT COUNTS (2017)
- OTHER VESSEL TRANSIT COUNTS (2017)
- PASSENGER VESSEL TRANSIT COUNTS (2017)
- PLEASURE CRAFT-SAILING VESSEL TRANSIT COUNTS (2017)
- TANKER VESSEL TRANSIT COUNTS (2017)
- TUG-TOW VESSEL TRANSIT COUNTS (2017)
- OFFSHORE DISCHARGE FLOW
- PILOT BOARDING AREAS
- ▶ PORT FACILITIES (AREAS)
- ▶ PORT FACILITIES (POINTS)
- ROUTING MEASURES
- SHIPWRECK DENSITY
- Oceanography
- Recreation
- Renewable Energy



Basemap: Nautical Charts Data: Cargo Vessel Transit Counts (2017)

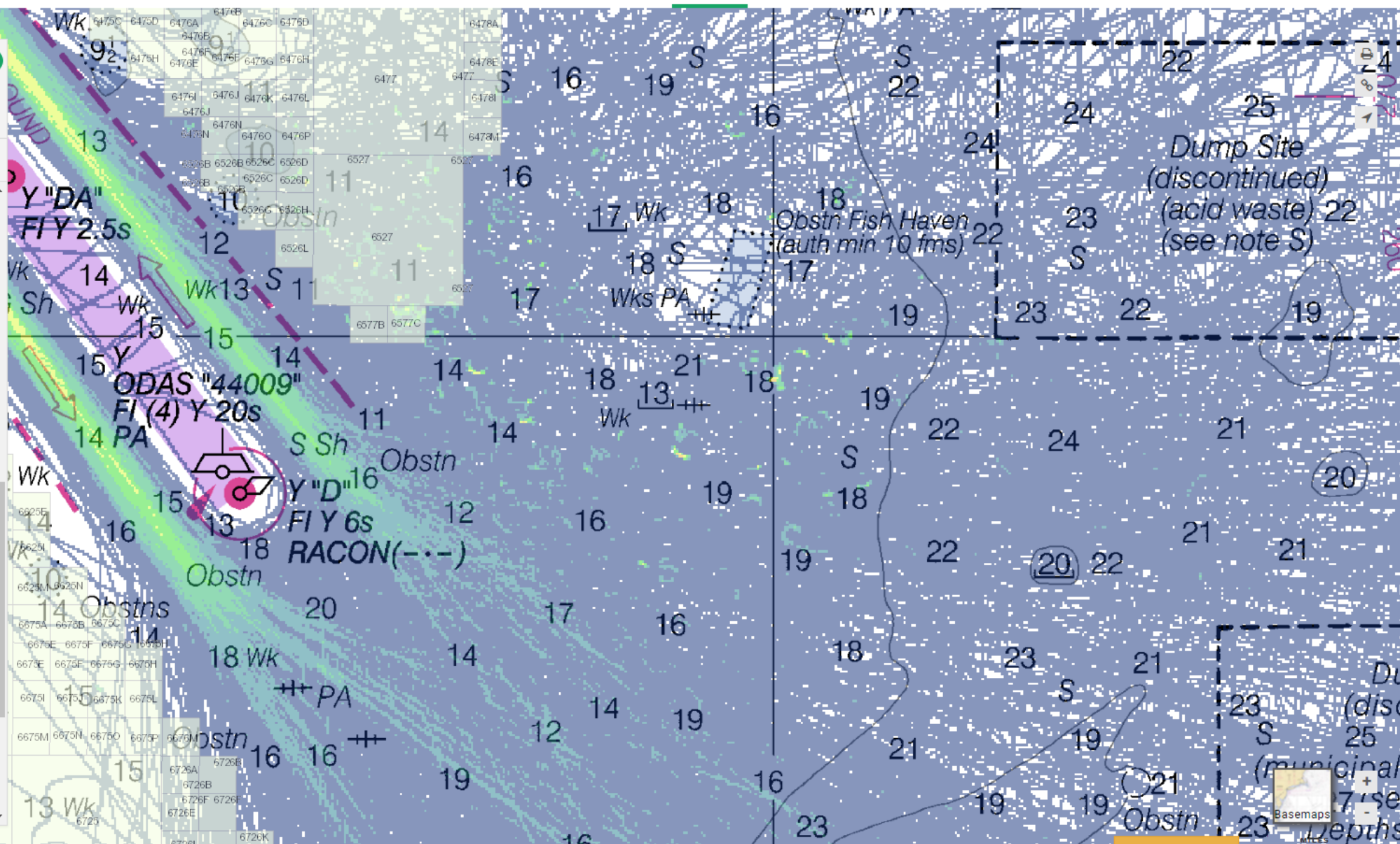
Provide feedback



Search data

Active • 2 MyPlanner Data Legend

- N. ATLANTIC RIGHT WHALE SMAS
- NASCA SUBMARINE CABLES
- OCEAN DISPOSAL SITES
- OFFSHORE DISCHARGE FLOW
- PILOT BOARDING AREAS
- PORT FACILITIES (AREAS)
- PORT FACILITIES (POINTS)
- ROUTING MEASURES
- SHIPWRECK DENSITY
- Oceanography
- Recreation
- Renewable Energy
 - BOEM ACTIVE RENEWABLE ENERGY LEASE AREAS
 - BOEM WIND PLANNING AREAS
 - COASTAL ENERGY FACILITIES
 - DEPARTMENT OF DEFENSE OFFSHORE WIND MISSION COMPATIBILITY ASSESSMENTS
 - NY BIGHT CALL AREAS
 - NYS IDENTIFIED WIND ENERGY AREA OF CONSIDERATION

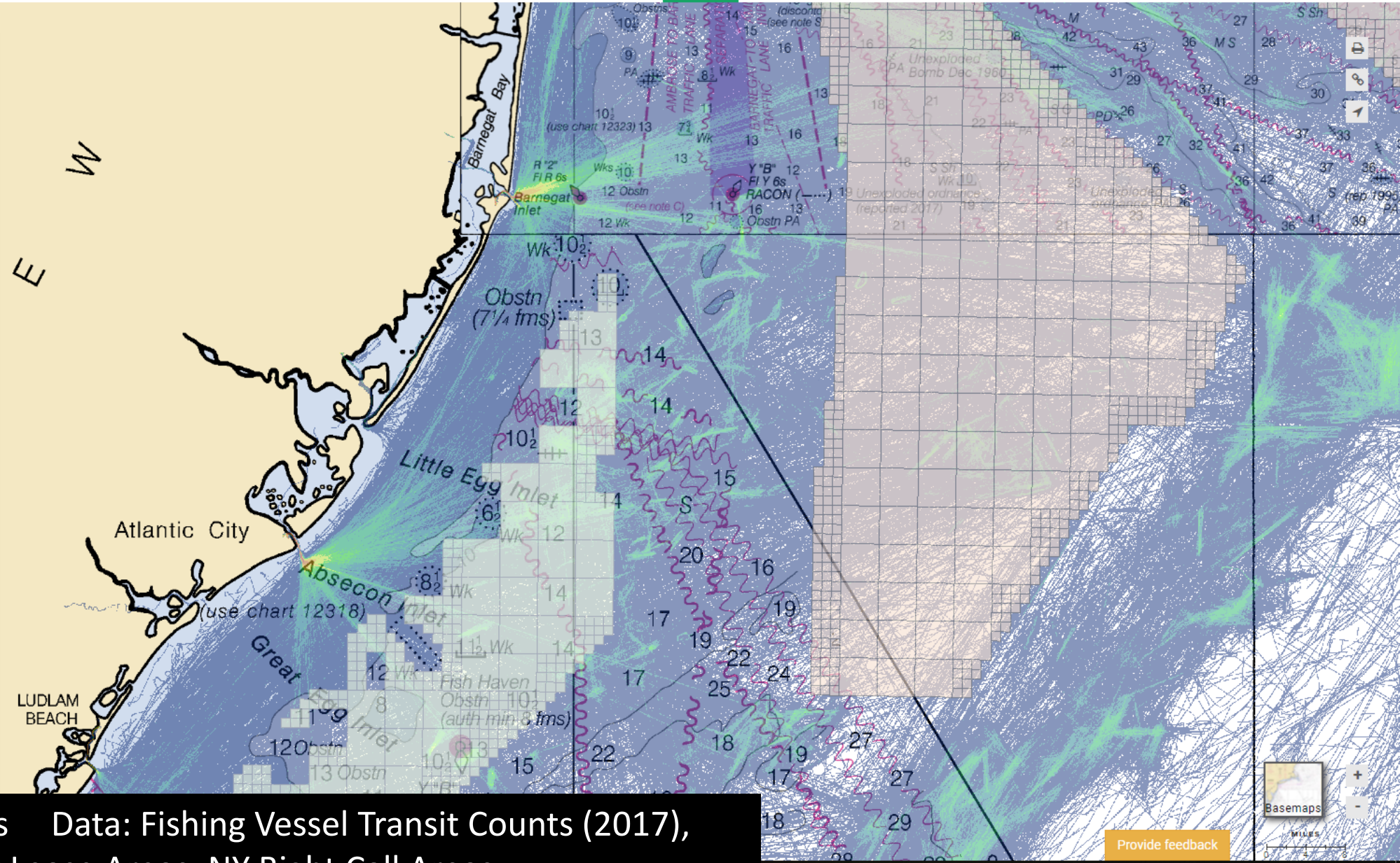


Basemap: Nautical Charts Data: Tanker Vessel Transit Counts (2017), Active Renewable Energy Lease Areas

Search data

Active • 3 MyPlanner Data Legend

- SHIPWRECK DENSITY
- Oceanography
- Recreation
- Renewable Energy
 - BOEM ACTIVE RENEWABLE ENERGY LEASE AREAS
 - BOEM WIND PLANNING AREAS
 - COASTAL ENERGY FACILITIES
 - DEPARTMENT OF DEFENSE OFFSHORE WIND MISSION COMPATIBILITY ASSESSMENTS
 - NY BIGHT CALL AREAS
 - NYS IDENTIFIED WIND ENERGY AREA OF CONSIDERATION
 - OFFSHORE WIND ENERGY TECHNOLOGY ZONES
 - VIRGINIA RESEARCH LEASE AREAS
 - WIND SPEED
- Security
- Socioeconomic



Basemap: Nautical Charts Data: Fishing Vessel Transit Counts (2017), Active Renewable Energy Lease Areas, NY Bight Call Areas

Provide feedback

