



New Jersey Office of Weights and Measures



NJDEP Seminar

October 12, 2023

NJOWM Overview

Laws/Regs/Handbooks

Required Docs

Types of Inspections

Types of Devices

“Equity in the marketplace”



Presented by
Jason R. Flint, Acting Supervisor of Enforcement



New Jersey Office of Weights and Measures



NJOWM Overview

State
Superintendent

Enforcement

Technical Services

Metrology/Licensing/Registration





New Jersey Office of Weights and Measures



NJOWM Overview

Enforcement





New Jersey Office of Weights and Measures



NJOWM Overview

Technical Services





New Jersey Office of Weights and Measures



NJOWM Overview

Metrology

- Maintains State Standards
- Tests industry standards
- Test law enforcement devices

Registration

- Maintains database of all devices
- Sends renewal applications annually

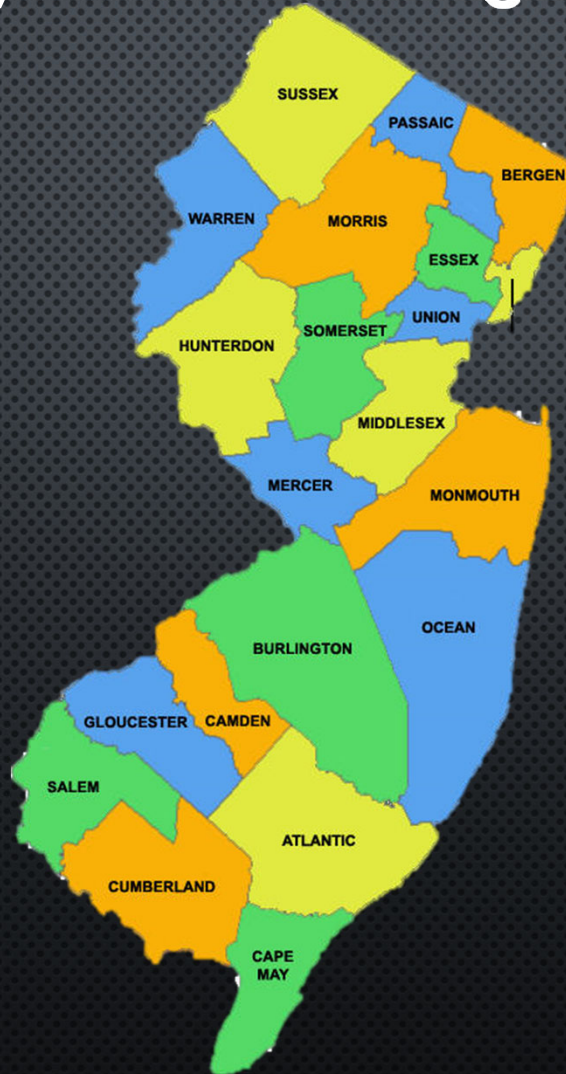
Licensing

- Dealers/sellers of devices
- Repair persons
- Dealers/sellers of lumber



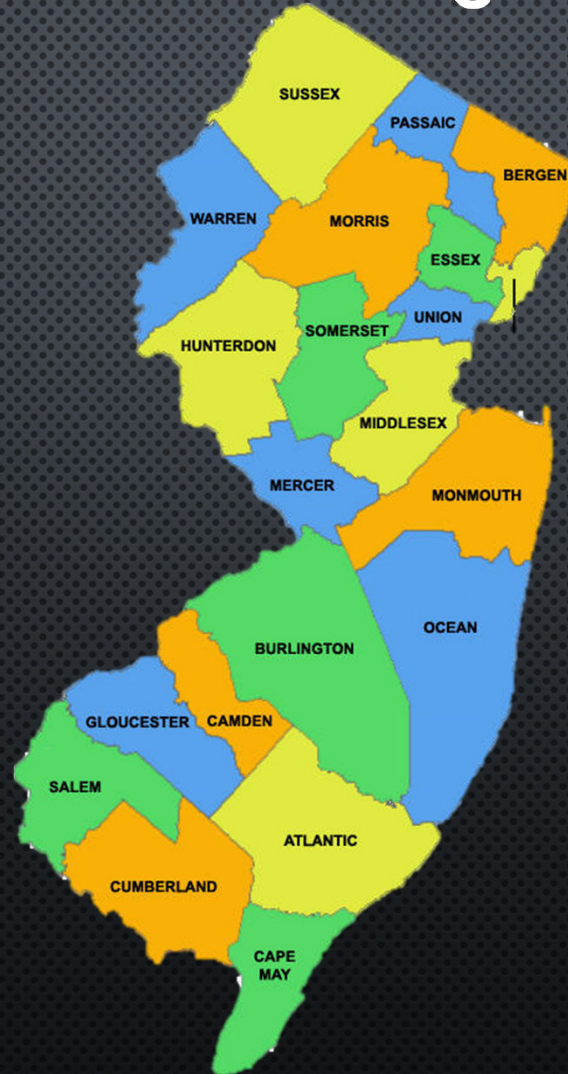
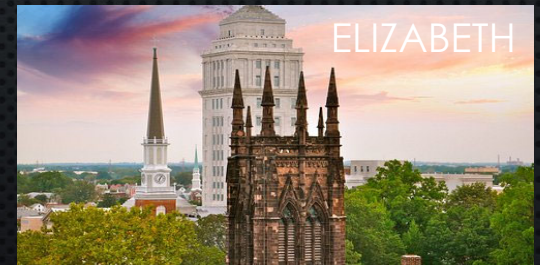


New Jersey Office of Weights and Measures





New Jersey Office of Weights and Measures





New Jersey Office of Weights and Measures



Laws/Regs/Handbooks



New Jersey Statutes Annotated Title 51

and
for
ices

7th
on
s

44
2023



New Jersey Office of Weights and Measures



Laws/Regs/Handbooks

- TITLE 1. ADMINISTRATIVE LAW
- TITLE 2. AGRICULTURE
- TITLE 3. BANKING
- TITLE 3A. CHILDREN AND FAMILIES
- TITLE 4A. CIVIL SERVICE
- TITLE 5. COMMUNITY AFFAIRS
- TITLE 5A. MILITARY AND VETERANS' AFFAIRS
- TITLE 6. EDUCATION
- TITLE 6A. EDUCATION
- TITLE 7. ENVIRONMENTAL PROTECTION
- TITLE 8. HEALTH
- TITLE 9. HIGHER EDUCATION
- TITLE 9A. HIGHER EDUCATION
- TITLE 10. HUMAN SERVICES
- TITLE 10A. CORRECTIONS
- TITLE 11. INSURANCE
- TITLE 12. LABOR AND WORKFORCE DEVELOPMENT
- TITLE 12A. COMMERCE
- TITLE 13. LAW AND PUBLIC SAFETY
- TITLE 14. PUBLIC UTILITIES
- TITLE 14A. ENERGY
- TITLE 15. STATE

New Jersey Administrative Code

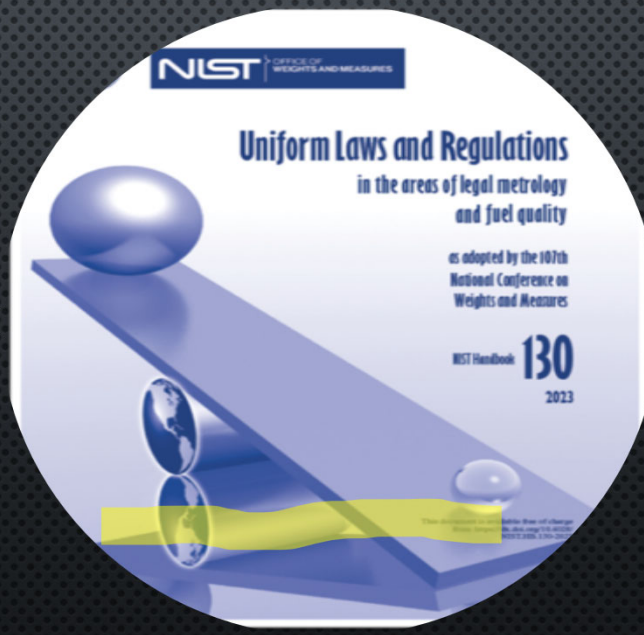
- N.J.A.C. 13:47B – General Weights and Measures
- N.J.A.C. 13:47C – Methods of Sales
- N.J.A.C. 13:47F – Registration Devices
- N.J.A.C. 13:47K – Packaging/Labeling/Net Content
- N.J.A.C. 13:47H – Engine Fuels and Lubricants



New Jersey Office of Weights and Measures



Laws/Regs/Handbooks





New Jersey Office of Weights and Measures



Required Documentation

STATE OF NEW JERSEY
OFFICE OF WEIGHTS & MEASURES
PO BOX 490
AVENEL, NEW JERSEY 07001-0490
(732) 815-7826 FAX (732) 382-5298

REGISTRATION CERTIFICATE

VALID FOR YEAR
2013

REGISTRATION #: 19-041073-13
EFFECTIVE DATE: 02/01/13
EXPIRATION DATE: 01/31/14

DEVICE LOCATION:
(NAV/19) EXXON
@ NORTHEAST AUTO-VEND
RT 22 EAST & COLUMBIA AVE.
NORTH PLAINFIELD NJ 07060
07060

This is to certify that the listed weighing and measuring devices are registered for one year with the Office of the State Superintendent of Weights & Measures pursuant to the provisions of Section 6 through 13 of Chapter 60, 1994 Public Laws of New Jersey.

NORTHEAST AUTO-VEND
ATTN: TONY DUBOSKI
P.O. BOX 333
CHINCHILLA PA 18410

ID	TYPE OF DEVICE	QUANTITY
18	TIMING DEV	1

Robert J. Camporelli
ACTING STATE SUPERINTENDENT

NON-TRANSFERABLE. KEEP THIS CERTIFICATE CONSPICUOUSLY POSTED AT ALL TIMES
SEE ABOVE FOR MORE INFORMATION.

ISSUED: 01/09/13 RUN DATE: 01/15/13



New Jersey Office of Weights and Measures



Required Documentation

REPORT OF SERVICE STATION TEST AND INSPECTION

SOMERSET COUNTY DEPARTMENT OF WEIGHTS & MEASURES
P.O. Box 3000, Somerville, New Jersey 08876-1262
Phone (908) 231-7125



Test No.: 13-02
Date: 3/3/13

THIS IS TO CERTIFY, that in accordance with the law, I have tested the measure herein enumerated said to be property of:

Name of Owner: JOSEPH SILVERTOE
Address: 26 MECKLETON ROAD
ALPHA, NJ 06667

Trading as: JOE'S GAS N' GUZZLE (SHELL)
NJ Dealer #: NOT FOUND Expires:
Registration #: 01-067593-12

Pump No.	Product	Dispenser Make	Model Number	Serial Number	Test Results				Price Comp \$	Price per Gal. / liter	Gal. / liter used for test	Tolerance	
					1	2	3	4				Main	Accept
1	REGULAR	GILBERTCO	NNT	EP674973	+4	+2	+3		\$2.49	3.499	15.00	X	
2	SILVER	↓	↓	↓	-3	-3	-3		\$3.99	3.599	15.00	X	
3	V-POWER	↓	↓	↓	+2	+2	+2		\$5.49	3.699	15.00	X	
4	REGULAR	↓	↓	↓	-6	-5	-5		\$2.49	3.499	15.00		X
5	SILVER	↓	↓	↓	-2	+2	∅		\$3.99	3.599	15.00		X
6	V-POWER	↓	↓	↓	∅	+2	+1		\$5.49	3.699	15.00		X
7													
8													
9													
10													

Pump No.	Air Elim.	Inter Lock	Check Value	Octane Posting	Posted & Sale Price in agreement		Final Disposition				Seals Applied	REMARKS
					Yes	No	Sealed	Sealed Subj	Not Sealed	Cond.		
1				87	X		X				YES	
2				87			X				YES	
3				93			X				YES	
4				87					X		NO	
5				87			X				YES	MECHANIC SEAL V-RSC
6				93			X				YES	
7												
8												
9												
10												

The product(s) used for testing as indicated on this inspection certificate was returned to the storage tank(s) from which it was taken as directed by the person in charge.

Joseph Silvertoe
Signature of Dealer or Representative

[Signature] #96
Signature of Weights & Measures Official



New Jersey Office of Weights and Measures



Required Documentation



State of New Jersey
Department of Law & Public Safety
Office of Weights & Measures
David Freed Acting Superintendent
1261 Routes 1 & 9 South Avenel, NJ 07001
Phone: (732) 815-4840 Fax: (732) 382-5298

Device Grid Test Mailing Summary

Insp Date: 2/12/2019 **Business ID:** 091133
Business: GAS PLUS
1729 ASBURY AVENUE
ASBURY PARK, NJ 07712

Inspection: NB000185
Store ID: 3
Phone: (908) 892-6732
Inspector: NN-C26 David Brabazon
Reason: 01. Routine

Class	Actv	Slid	NS	Cnd	SS
10 Fuel Pump Hose (LMD)	2	2			
Gas Station	1	1			

Make	Model	Subtype	Serial #		Location	Failed Attribs	Test	Error	Results	Prod Used	Notes
WAYNE	V580P1	Fuel	54343A-01	87	PUMP 01		Normal Flow Slow Flow	1 2	Sealed	10.000	Returned Products to Storage as Directed
WAYNE	V580P1	Fuel	54343A-02	87	PUMP 02		Normal Flow Slow Flow	2 2	Sealed	10.000	Returned Products to Storage as Directed
N/A	N/A	Un-Branded	091133						Sealed	0.000	

Device Product Used: 20. Insp Product Used: . Tot Product Used: 20.
Grade Prod Used
87 20.00

D. Brabazon
Inspector

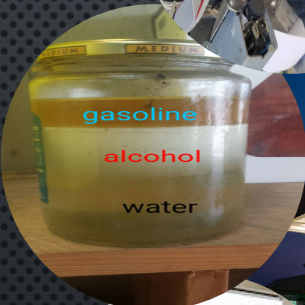
M
Acknowledged Receipt: BALJEET, REP.



New Jersey Office of Weights and Measures



Types of Inspections

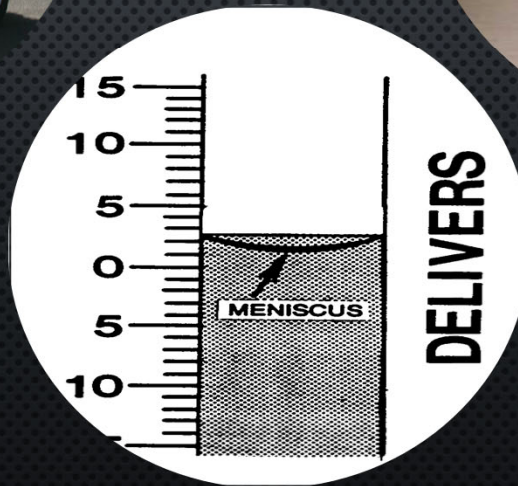




New Jersey Office of Weights and Measures



Types of Inspections

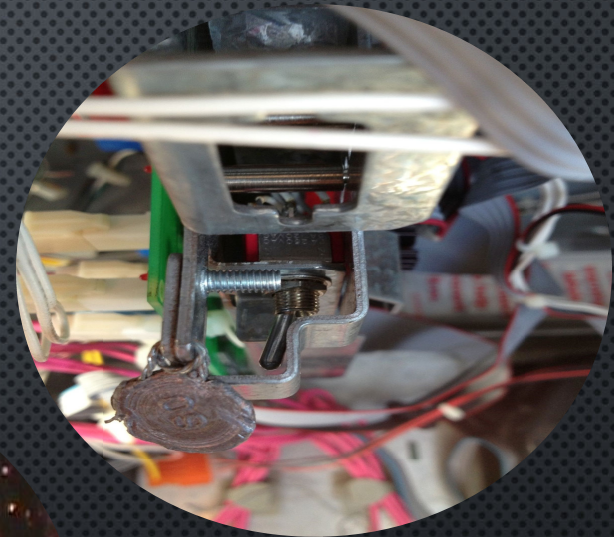




New Jersey Office of Weights and Measures



Types of Inspections





New Jersey Office of Weights and Measures



Types of Inspections





New Jersey Office of Weights and Measures



Types of Inspections

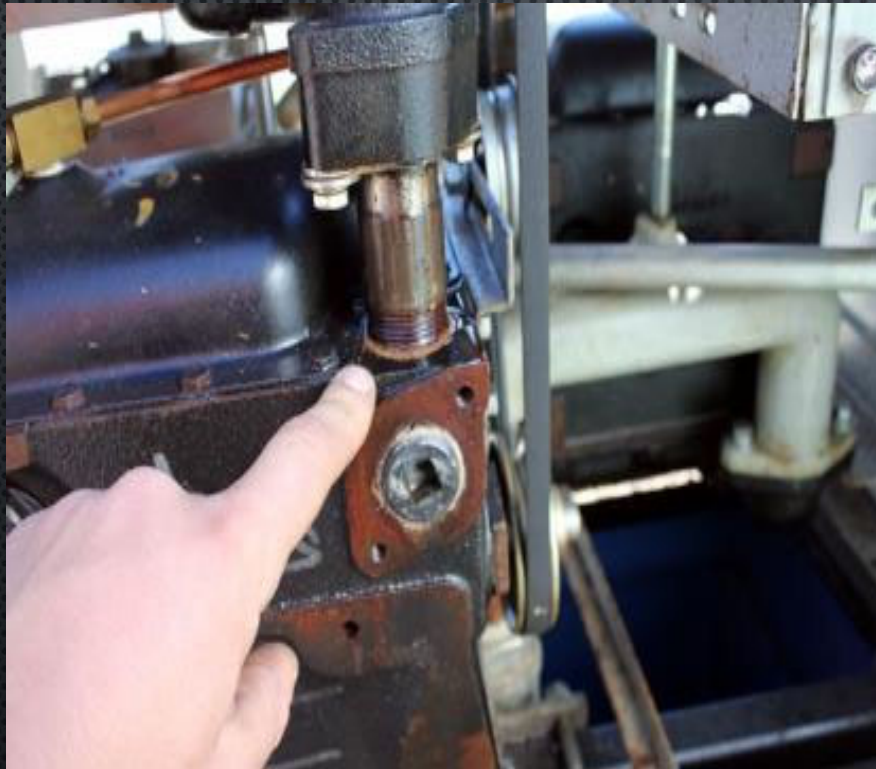




New Jersey Office of Weights and Measures



Types of Inspections





New Jersey Office of Weights and Measures



Types of Inspections

Gasoline

Diesel





New Jersey Office of Weights and Measures



Types of Inspections





New Jersey Office of Weights and Measures



Types of Inspections

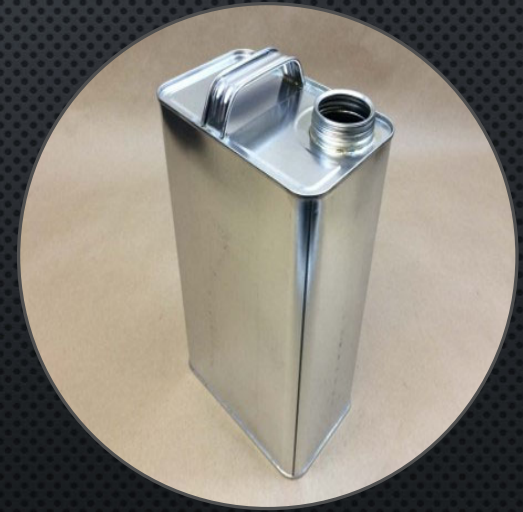




New Jersey Office of Weights and Measures



Types of Inspections

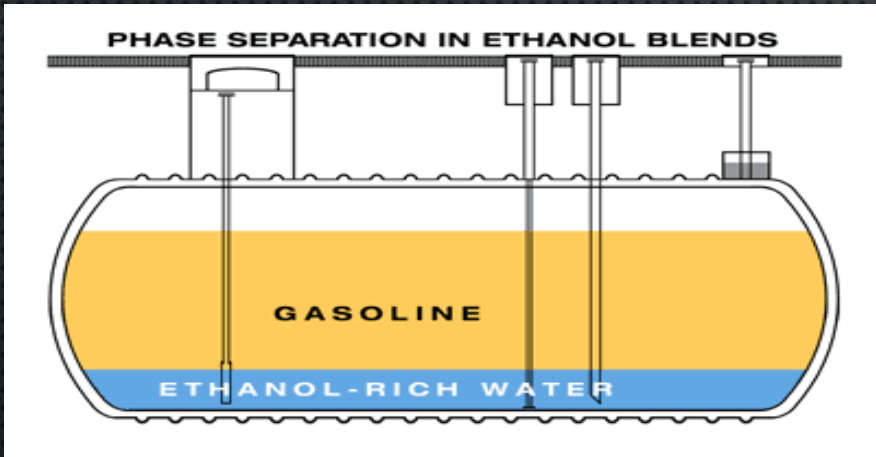




New Jersey Office of Weights and Measures



Types of Inspections





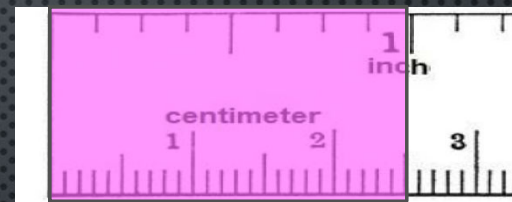
New Jersey Office of Weights and Measures



Types of Inspections



- Gasoline blended with ethanol
- Biodiesel
- Aviation turbine fuel (JET fuel)
- Aviation gasoline (AVGAS)



- Gasoline
- Diesel
- Kerosene
- All other fuels



New Jersey Office of Weights and Measures



Types of Inspections

Regardless of the design of the retail motor fuel dispenser (RMFD), any nozzle that dispenses the indicated product shall be secured to the RMFD using a lead and wire seal to ensure the product is not sold.





New Jersey Office of Weights and Measures



Types of Inspections





New Jersey Office of Weights and Measures



Types of Inspections



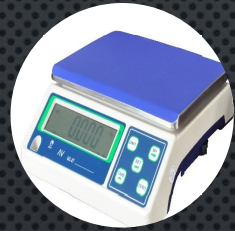
- Cost per vend
 - \$1.25 / 5 minutes
- Responsible party information
 - Name
 - Address
 - Phone number



New Jersey Office of Weights and Measures



Types of Inspections





New Jersey Office of Weights and Measures



Types of Inspections





New Jersey Office of Weights and Measures



Types of Inspections





New Jersey Office of Weights and Measures



Types of Inspections

- Product Identity
- Quantity

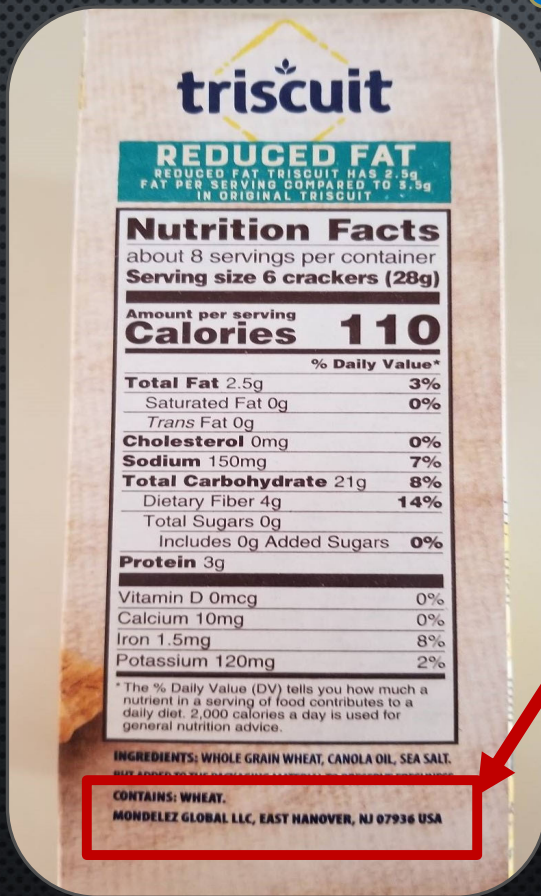




New Jersey Office of Weights and Measures



Types of Inspections



- Responsibility



New Jersey Office of Weights and Measures



Types of Inspections





New Jersey Office of Weights and Measures



Types of Inspections





New Jersey Office of Weights and Measures

