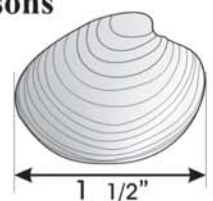


ATTENTION ANGLERS

2008 NJ Recreational Minimum Size, Possession Limits & Seasons

Fish are measured from tip of snout to tip of tail (*except Black Sea Bass*).
Cleaning or filleting of fish with a minimum size limit while at sea is prohibited.



Hard Clam
recreational limit - 150 clams
No harvest on Sunday
License required



Weakfish
6 fish at 13 inches



Striped Bass or Hybrid Striped Bass
2 fish at 28" or greater



Summer Flounder (Fluke)
8 Fish at 18 inches
Open Season: May 24 - Sept. 7



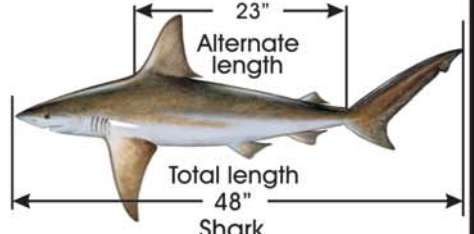
Winter Flounder
10 fish at 12 inches
Open Season: March 23 - May 21



Tautog 14 inches
Open seasons:
4 fish Jan. 1 - Apr. 30
1 fish July 16 - Nov. 15
6 fish Nov. 16 - Dec. 31

PROHIBITED SPECIES
It is illegal to take, possess or land any of the following species:

**BIGEYE SAND TIGER SHARK
SHORTNOSE STURGEON
ATLANTIC STURGEON
SAND TIGER SHARK
BASKING SHARK
WHALE SHARK
WHITE SHARK**



Shark
2 fish per vessel

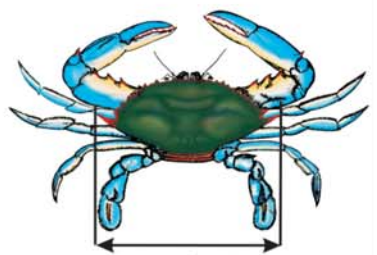


Black Sea Bass
25 FISH @ 12 INCHES
Open season: Jan 1- Dec. 31



Bluefish
15 fish no minimum size
Open season: Jan 1 - Dec 31

OTHER SPECIES	POSSESSION LIMIT	TOTAL LENGTH
AMERICAN EEL	50	6"
BLACK DRUM	3	16"
COBIA	2	37"
COD	NO LIMIT	21"
HADDOCK	NO LIMIT	21"
KING MACKEREL	3	23"
POLLOCK	NO LIMIT	19"
RED DRUM	1	18"- 27"
SCUP (PORGY)	50	9" (Jan.1-Feb.28 July 1-Dec.31)
SHAD	6	NO LIMIT
SPANISH MACKEREL	10	14"
LOBSTER	6	3 3/8" - 5 1/4" (Carapace length)



Blue Crab
peeler or shedder - 3 inches
soft - 3 1/2 inches
hard - 4 1/2 inches
recreational limit - one bushel
Crab pot/Trot line Seasons:
Delaware Bay & tributaries
April 6 - Dec. 4
All other waters
March 15 - Nov. 30



New Jersey Department of Environmental Protection
Division of Fish and Wildlife
www.njfishandwildlife.com

