

This is not the full law. Consult the Division of Fish and Wildlife for further details. All persons are reminded that the statutes, code and regulations are the legal authorities.

**Red text** in regulations indicates a change for this year.

**Purple text** denotes proposed regulation changes anticipated to be in effect later in 2009.

The Department of Environmental Protection's Division of Fish and Wildlife informs anglers that rules for the recreational harvest of **summer flounder (fluke)** have changed. The summer flounder recreational season is now **May 23–Sept. 4**. The recreational minimum size remains 18 inches and the possession limit is now **six** fish. Also, the **black sea bass** minimum size limit is now **12.5 inches**. However, the recreational size limit may change again in 2009.

At the time of publication, recreational measures for black drum and coastal sharks had not been adopted but are expected to become effective during 2009. For the latest information on black drum, sharks and black sea bass visit our Web site at [NJFishandWildlife.com](http://NJFishandWildlife.com) or call the 24-hour marine fish "listen-only" line at (609) 292-2083.

These changes were implemented for New Jersey to remain in compliance with the Atlantic States Marine Fisheries Commission's management plans for summer flounder, black sea bass and coastal sharks. The new rules are aimed at providing adequate protection to these fish stocks while allowing New Jersey's saltwater recreational anglers to participate to the fullest extent possible in these various fisheries.

New Jersey recreational marine regulations apply to all fish species when they are possessed in state waters or landed in New Jersey regardless of where they are caught.

### Resource Information

Anyone who takes fisheries resources may be required to provide information on the species, number, weight or other information pertinent to management of resources.

### Methods of Recreational Fishing

No person shall take, catch, kill or attempt to take, catch or kill any fish within the marine waters of the state by any means except in the manner commonly known as angling with hand line or rod and line unless specifically provided for by statute or regulation.

### Wanton Waste Prohibited

Fish of any species which are purposely killed shall become part of the angler's daily possession limit and shall not be returned to the water from which they were taken. This does not apply to fish which are released alive and subsequently die, but does apply even to species without size/possession limits.

### Spear Fishing

Spear fishing may be conducted by means of a spear, harpoon or other missile while completely submerged in the marine waters of the state for any species, except lobster.

Persons who fish with a spear for species with size limits are reminded that it is their responsibility to ensure the fish meets the minimum size limits before being killed or injured.

### Prohibited Species

It is illegal to take, possess, land, purchase, or sell any of the following species:

- Atlantic sturgeon
- basking shark
- big eye sand tiger shark
- sand tiger shark
- shortnose sturgeon
- whale shark
- white shark
- See *Sharks* (page 12) for a list of prohibited shark species proposed for later in 2009

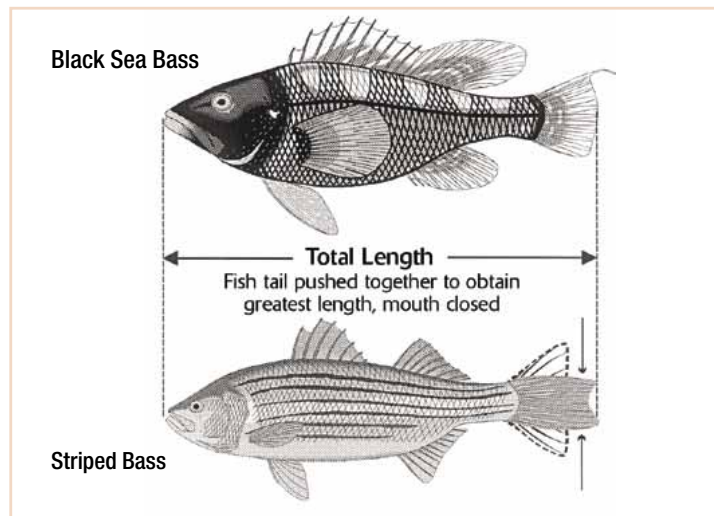
### Sea Turtles & Marine Mammals

It is illegal to intentionally molest, kill or possess sea turtles or marine mammals, or to possess any part thereof.

### Finfish

#### Filleting

The filleting at sea of all fish with a size limit is prohibited. No parts of any fish caught on a previous fishing trip shall be in possession. Party boats may fillet fish



at sea if they obtain a Special Fillet Permit. Applications may be obtained from Fish and Wildlife's Bureau of Marine Fisheries. See *Summer Flounder*, page 12.

### Black Sea Bass

The minimum size limit for black sea bass is **12.5 inches** measured along the midline from the snout to the end of the central portion of the tail, not to include the tail filaments. (See illustration above.) The possession limit is 25 fish with an open season of Jan. 1 through Dec. 31.

### Bluefish

The possession limit for bluefish is 15 fish.

### Black Drum

The minimum size limit for black drum is 16 inches in total length and the daily possession limit is three fish. There is no closed season for black drum.

Proposed changes for black drum include a minimum size limit of 32 inches (total length) with a daily possession limit of two fish. The "no closed season" for black drum would continue. Go to Fish and Wildlife's Web site for the latest information or call the 24-hour "listen only" marine fish information line at (609) 292-2038.

### Red Drum

The red drum possession and size limits are one fish no less than 18 inches and not greater than 27 inches.

### Striped Bass (includes Hybrid Striped Bass)

The possession limit for striped bass/hybrid striped bass is two fish with a minimum size limit of 28 inches for each fish. Anglers participating in the Striped Bass Bonus Program (see next page) may possess an additional striped bass at least 28 inches in length.

It is illegal to take, catch or kill any striped bass from or in any marine waters of this state, by means of a net of any description, or by any methods other than angling with a hook and line or by spear fishing.

It is illegal to possess any striped bass which is less than the legal minimum size of 28 inches. A person shall not fillet, or remove the head or tail, or parts thereof, of any striped bass at sea.

Harvest and possession of striped bass from federal waters (outside three miles) is prohibited.

Sale of striped bass in New Jersey is prohibited. >

### Striped Bass Closed Seasons

No person may take, attempt to take, or have in possession any striped bass from the following closed waters:

**Jan. 1–Feb. 28:** All waters closed except the Atlantic Ocean from zero to three miles offshore. All inlets and bays are delineated from ocean waters by a Colregs Demarcation line.

**April 1–May 31:** Delaware River and Bay and their tributaries closed from the upstream side of the Calhoun St. bridge downstream to and including the Salem River and its tributaries.

**Note:** Non-offset circle hooks are required to reduce striped bass bycatch mortality while fishing with natural bait during the striped bass springtime spawning area closure within the Delaware River and its tributaries. This restriction does not apply to hook sizes smaller than size 2.

### Striped Bass Bonus Program

The Striped Bass Bonus Program will continue this year, where anglers possessing a bonus permit may keep a third striper at 28 inches or greater.

The current allocation from the Atlantic States Marine Fisheries Commission is 321,750 pounds to be distributed between individual anglers and party/charter boats. Should New Jersey exceed this quota, any overage would be subtracted from the following year's quota.

**Application Process:** Striped Bass Bonus Program permits are only available online. Go to [WildlifeLicense.com/nj/](http://WildlifeLicense.com/nj/), complete the application and immediately print one Bonus Permit (application fee, \$2). The permit is non-transferable and valid for the current calendar year. Only one permit can be used per day. Harvest reporting also must be online.

The party/charter boat segment of the program remains the same, with the applications available only by contacting Fish and Wildlife at (609) 748-2020. The party/charter boat bonus program is not online.

**Striped Bass Bonus Permit Harvest Reporting:** All information on the Bonus Permit must be completed immediately after harvest and prior to transportation. After reporting harvest information at [WildlifeLicense.com/nj/](http://WildlifeLicense.com/nj/), anglers are then eligible to receive another bonus permit for the \$2 application fee.

**Note:** Harvest information must be reported online.

**Striped Bass Fishing Log:** All participants receive a log with their Bonus Permit and are encouraged to report all striped bass fishing activity for the calendar year. Anglers now have the option to enter their striped bass fishing log online instead of mailing their paper fishing log. Go to [NJFishandWildlife.com/bonusbas\\_log.htm](http://NJFishandWildlife.com/bonusbas_log.htm).

### Sharks

The minimum size limit for any species of shark, except dogfish (see note below) is 48 inches total length.

Under the proposed regulations changes, the fins may not be removed from a shark, except after fishing has ceased and such shark has been landed. A shark may be eviscerated and the head and tail removed prior to landing, provided that the alternate length as measured from the origin of the first dorsal fin to the pre-

caudal pit (located just forward of the origin of the upper lobe of the tail fin) is not less than 23 inches in length. The possession limit is two sharks per vessel.

**Proposed Atlantic Coastal Shark Changes:** In response to the October 2008 adoption of the Atlantic States Marine Fisheries Commission's (ASMFC) *Interstate Fishery Management Plan for Atlantic Coastal Sharks*, New Jersey must implement new recreational and commercial management measures for Atlantic coastal sharks regarding prohibited species, size, season and possession limits plus commercial quotas. The ASMFC compliance requirements to be implemented in 2009 were developed to complement existing federal shark regulations (see 2009 *Federal Recreational Regulations table*, page 18). However, the following additional proposed measures are required:

- In state waters, there is no minimum size limit for small coastal sharks\* in the recreational fishery, but federal regulations include a 54-inch minimum size limit for blacknose and finetooth small coastal sharks.
- All sharks within the large coastal group\* will have a closed season within state waters from May 15 through July 15 to protect spawning female sharks during the pupping season.

\* See page 18 footnote for species list defining small coastal, large coastal and pelagic sharks.

All sharks harvested by recreational fishermen must have heads, tails and fins attached naturally to the carcass until landed. Anglers may still gut and bleed the carcass as long as the tail is not removed. Filleting sharks at sea is prohibited.

Recreational anglers should access the following National Oceanic and Atmospheric Administration Web site, [http://www.nmfs.noaa.gov/sfa/hms/sharks/2008/Rec\\_shark\\_ID\\_placard\\_09\\_04\\_2008.pdf](http://www.nmfs.noaa.gov/sfa/hms/sharks/2008/Rec_shark_ID_placard_09_04_2008.pdf) to view the publication *Sharks that can be legally retained by recreational anglers in the Atlantic Ocean, Caribbean Sea and Gulf of Mexico*, an excellent pictorial guide to identifying sharks that are legal to harvest.

**Proposed prohibited Species to be adopted in 2009:** Additional shark species proposed to be prohibited for possession upon regulation adoption later in 2009—Atlantic angel, bigeye sixgill, bigeye thresher, bignose, Caribbean reef, Caribbean sharpnose, dusky, Galapagos, longfin mako, narrowtooth, night, sandbar, sevengill, silky, sixgill and smalltail sharks.

**Note:** To differentiate sharks from dogfish—the smooth dogfish has flat, tiny teeth; the spiny dogfish has strong, dorsal spines, shorter than, and in front of, the dorsal fins. Neither are present in sharks.

### Summer Flounder (Fluke)

The possession and minimum size limit for summer flounder is six fish at 18 inches with an open season from **May 23–Sept. 4**.

Anglers may fillet one legal-sized summer flounder from their daily possession limit catch for use as bait. This carcass, commonly known as the rack, shall be kept intact so it can be measured for compliance with the minimum size limit. No parts of any summer flounder caught on a previous fishing trip shall be in possession; only fish just caught on this outing.

### Tautog (Blackfish)

The minimum size limit for Tautog is 14 inches. There is a four fish possession limit from Jan. 1–April 30, a zero fish possession limit from May 1–July 15 (the season is closed), a one fish possession limit from July 16 through Nov. 15 and a six fish possession limit from Nov. 16–Dec. 31.

### Weakfish (Gray & Spotted Seatrout)

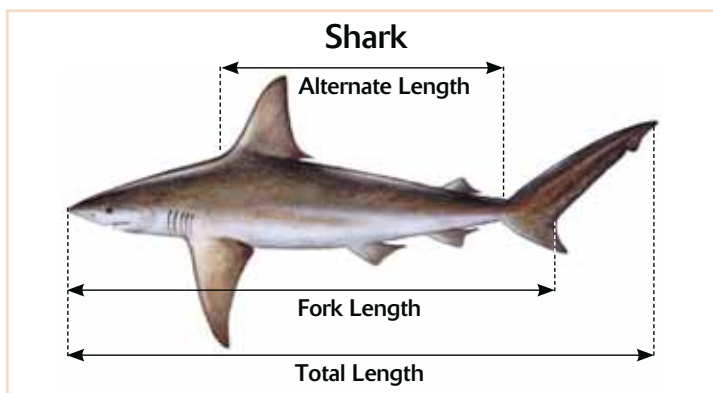
The current possession and minimum size limit for weakfish is six fish at least 13 inches in length.

### Winter Flounder

The minimum possession and size limit for winter flounder is 10 fish at 12 inches. For winter flounder the open season is March 23–May 21.

### Additional Marine Fishing Regulations

See pages 15–18 for the regulation charts and fish ID pages.



### Federal Registry and State Marine Licensing Requirements

The National Oceanic and Atmospheric Administration (NOAA) announced the adoption of the final rule to implement the national saltwater angler registry program. Anglers need not be registered until **Jan. 1, 2010**. For the latest information, visit [CountMyFish.noaa.gov](http://CountMyFish.noaa.gov). See also the *Director's Message*, page 2.

### Delaware Fishing License Requirement

A Delaware fishing license is now required for anglers aged 16 and over fishing the Delaware River and Delaware Bay between the upstream tip of Artificial Island and the Delaware-Pennsylvania state line. In that section of the river, the Delaware state boundary extends to the New Jersey shoreline. When fishing from shore in New Jersey along that section of the river, a Delaware fishing license is not required. Delaware fishing license information can be found at <http://www.fw.delaware.gov/Fisheries/Pages/NewFishingLicense.aspx>

### New York License Requirement

**Note:** The governor of New York has proposed a saltwater fishing license for all recreational anglers fishing in New York state marine waters for the 2009 season. Check for updates on the status of this proposal.

### Bait Fish

No license is required for the taking of baitfish for personal use with the following gear:

1. Dip nets 24 inches diameter or less for the taking of herring for live bait.
2. Bait seines 50 feet long or less.
3. Cast nets 20 feet in diameter or less.
4. Lift or umbrella nets four feet square or less.
5. Not more than five killipots.
6. Not more than two miniature fykes or pots for the taking of eels for bait.

Fish taken in this manner may not be sold or used for barter unless a commercial bait net license is in possession.

No person shall take more than 35 alewife or blueback herring in aggregate per day by hook and line or with the above listed gear.

No person shall take or attempt to take fish by any means from the Deal Lake flume, Lake Takanasse spillway or Wreck Pond spillway on any Monday, Wednesday or Friday during the months of April and May.



**Take a friend fishing!**  
*The memories will last a lifetime.*

**FREE Freshwater Fishing Days**  
— June 6 and 7, 2009 —

On these two days, residents and non-residents may fish New Jersey's public fresh waters without a license or trout stamp. All other regulations, including size and daily catch limits, remain in effect.

### POLICE STATIONS

### State Police Marine Law Enforcement Stations

Bivalve .....	(856) 785-1330
North Wildwood .....	(609) 522-0393
Atlantic City .....	(609) 441-3586
Burlington .....	(609) 387-1221
Ocean .....	(609) 296-5807
Point Pleasant .....	(732) 899-5050
Monmouth Station .....	(732) 842-5171
Lake Hopatcong .....	(973) 663-3400
Newark Bay .....	(973) 578-8173

### MOTOR BOAT REGISTRATION

### Motor Boat Title and Boating Operator Requirements

#### Registration

Most boats must be registered to operate on New Jersey waterways. All titled boats must be registered also. Any boat (including jet skis and non-titled watercraft), mechanically propelled (motorized), regardless of length, must be registered. Boats greater than 12 feet in length, regardless of propulsion means, must be titled and registered at an MVC office.

Boats and marine equipment which **need not** be registered:

- Those not based in New Jersey or operating here less than 180 consecutive days
- Ship's lifeboats
- Non-motorized vessels used exclusively on small lakes and ponds on private property
- Racing vessels with New Jersey State Marine Police permit
- Non-motorized inflatable device, surfboard, racing shell, dinghy, canoe or kayak
- Non-motorized vessel less than 12 feet in length

#### Title

For use on New Jersey waterways, all boats more than 12 feet in length must be titled, with the exception of ship's lifeboat, canoe, kayak, inflatable, surfboard, rowing scull, racing shell, tender/dinghy used for direct transportation between a vessel and shore for no other purposes.

For more information, visit the MVC Web site at [nj.gov](http://nj.gov) and click on the Motor Vehicle Commission link, or stop by an MVC office or call (609) 292-6500.

### OPERATOR REQUIREMENTS

### Motor Boat and Jet Ski Operator License

A motorboat/jet ski operator license is required to operate these on fresh, non-tidal waters such as lakes, creeks and rivers for those 16 years or older. All persons who wish to operate a power vessel must possess a Boating Safety Certificate by June 1, 2009. Visit the Motor Vehicle Commission Web site for more information.

#### New Jersey Motor Vehicle Commission

Boat Operators License  
(888) 486-3339 toll free in NJ or (609) 292-6500 from out-of-state  
[www.nj.gov/mvc/about/site\\_index.htm](http://www.nj.gov/mvc/about/site_index.htm)

#### Boating safety courses

(800) 336-2628

#### BoatUS Foundation

[www.BoatUS.com/courseline](http://www.BoatUS.com/courseline)

For New Jersey State Police, boating laws clarification, call (609) 882-2000, or visit their Marine Services Bureau online at: [www.nj.gov/lps/njsp/maritime/index.html](http://www.nj.gov/lps/njsp/maritime/index.html)



### Crustaceans

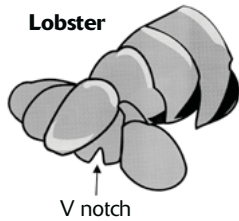
#### American Lobster

The legal possession size of whole lobsters, measured from the rear of the eye socket along a line parallel to the center line of the body shell to the rear of the body shell, shall be not less than 3<sup>3</sup>/<sub>8</sub> inches nor greater than 5<sup>1</sup>/<sub>4</sub> inches. Lobster parts may not be possessed at sea or landed.

The possession limit is six lobsters per person. No person shall possess any lobster with eggs attached or from which eggs have been removed or any female lobster with a v-notched tail, as illustrated above.

The use of spears, gigs, gaffs or other penetrating devices as a method of capture for lobsters is prohibited. A recreational lobster pot permit and fish pot license is required to use pots or traps to capture lobsters. For details call (609) 748-2020.

Lobsters taken recreationally may not be sold or offered for sale.



#### Crabs

1. Crabs may be taken recreationally with hand lines, manually operated collapsible traps or scoop nets without a license. A non-commercial crab pot license is required for the use of not more than two non-collapsible Chesapeake-style crab pots (see illustration on page 19) or two trot lines to harvest crabs. See page 19 for the non-commercial crab pot license information.

2. It is illegal to harvest or possess more than one bushel of crabs per day per person or offer for sale any crabs without having in your possession a valid commercial crabbing license.

3. Minimum size for crabs that may be harvested (measured from point to point of shell) are as follows:

- Peeler or shedder crab: 3 inches
- Soft crab: 3<sup>1</sup>/<sub>2</sub> inches
- Hard crab: 4<sup>1</sup>/<sub>2</sub> inches (possession)

4. All female crabs with eggs attached and all undersized crabs shall be returned to the water immediately.

5. Recreational trot lines shall not exceed 150 feet in length with a maximum of 25 baits.

6. All pots and trot lines shall be marked with the identification number of the owner.

7. All crab pots must be tended at least once every 72 hours.

8. No floating line may be used on any crab pot or crab pot buoy.

9. No crab pot shall be placed in any area that would obstruct or impede navigation or in any creek less than 50 feet wide.

10. Only the owner, his agent or a law enforcement officer may raise or remove contents of a legally set fishing device.

11. Crabs taken with a bait seine may be retained for personal use only if the fisherman possesses a bait net license, and may not be bartered or sold unless the fisherman possesses a commercial crab license.

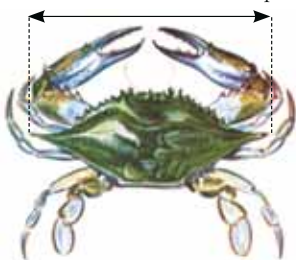
12. No crabs may be harvested from the Newark Bay Complex. For more information, see Health Advisory on page 22.

13. Crab Pot/Trot Line seasons:

Delaware Bay and tributaries: April 6–Dec. 4

All other waters: March 15–Nov. 30

The following waters are closed to the use of crab pots and trot lines:  
Cumberland Co.: Cohansey River and creeks named Back, Cedar, Nantuxent, Fortesque, Oranoken and Dividing; Cape May Co.: West and Bidwell Creeks and the Cape May Canal; Atlantic Co.: Hammock Cove (Dry Bay);



Measure crabs point to point.

Ocean Co.: on east shore of Barnegat Bay, that area of Sedge Islands Wildlife Management Area enclosed by a line drawn from the northern bank of Fishing Creek on Island Beach State Park to the northern tip of the Sedge Islands (Hensler Island), then south from point to point along the western side of the Sedge Islands WMA and terminating on the most southwestern point of Island Beach State Park.

14. Fish and Wildlife will issue a non-commercial crab dredge license for the harvest of not more than one bushel of crabs per day during the crab dredge season. Crabs so taken may not be sold or offered for barter. There is a fee of \$15 for this non-commercial crab dredge license. See page 19 for details on purchasing a non-commercial crab dredge license.

**Notice:** All non-collapsible Chesapeake-style crab pots (see illustration on page 19) must be constructed to include a biodegradable panel designed to create an opening to allow crabs and other organisms to escape if the pot is lost or abandoned. All non-collapsible Chesapeake-style crab pots set in any manmade lagoon or any water body less than 150 feet wide must also include a turtle excluder device inside all pot entrance funnels.

### Horseshoe Crabs

The harvest of horseshoe crabs is prohibited. Possession of horseshoe crabs is also prohibited except for those individuals holding a scientific collecting permit for research and education and those fishermen that can provide suitable documentation that the horseshoe crabs in their possession were harvested outside the State of New Jersey.

### Mollusks

1. All persons must be licensed to harvest any shellfish. See page 19. Shellfish means any species of benthic mollusks (except conch) including hard and soft clams, oysters, surf clams, bay scallops and mussels.

2. It is illegal to harvest shellfish from condemned waters, even for bait purposes. It is also illegal to harvest shellfish including surf clams from beaches adjacent to water classified as condemned. Shellfish water classification charts are available from license agents, any state shellfish office or Marine Police (page 13) station. See page 19 for shellfish license information. Charts are updated annually.

3. Shellfish harvesting is prohibited before sunrise, after sunset and on Sunday, except in the seasonally-approved areas of the Navesink and Shrewsbury rivers.

4. Harvesting shellfish on public grounds is restricted to the use of hand implements.

5. It is illegal to harvest shellfish from leased grounds. These grounds are delineated by stakes or buoys set by the lease holder. Charts of the leases may be examined at Fish and Wildlife's Nacote Creek or Delaware Bay shellfish offices during regular business hours. Invasion onto leased grounds is punishable by penalties up to \$3,000 and loss of all equipment.

### Recreational Shellfish License

1. No holder of any recreational shellfish license may take more than a total of 150 shellfish (in aggregate) per day. See page 19.

2. A non-resident recreational shellfish license is valid only during the months of June, July, August and September.

3. Anyone engaged in any shellfish harvesting activity with someone holding a commercial shellfish license must also possess their own commercial shellfish license.

4. It is illegal to dredge shellfish. Hand implements are the only legal harvest methods.

5. The minimum size of hard clams that may be harvested is 1<sup>1</sup>/<sub>2</sub> inches in length. Clams less than 1<sup>1</sup>/<sub>2</sub> inches in length must immediately be returned to the



bottom from which they were taken. Specific seasons, regulations and size limits exist for oyster beds in Great Bay, Delaware Bay, plus the Mullica, Great Egg Harbor and Tuckahoe rivers. Check with the nearest shellfish office (Nacote Creek or Delaware Bay) for these detailed regulations.

- It is illegal to harvest shellfish on Sunday except in the seasonal waters of the Navesink and Shrewsbury rivers between Nov. 1 and April 30.
- Shells taken in the process of harvesting oysters must be culled from the live oysters and returned immediately to the area from where they were taken.



### Commercial Shellfish License

- Shellfish may be sold only to certified dealers. All persons selling shellfish commercially must tag each container listing date of harvest, name and address of the harvester and the waters from which the shellfish were harvested.
- It is illegal to dredge shellfish on public grounds. All harvesting on public grounds is restricted to the use of hand implements.
- Shells taken in the process of harvesting oysters must be culled from the live oysters and immediately returned to the area from where they were taken.
- The minimum size of hard clams that may be harvested is 1½ inches in length. Clams less than 1½ inches must immediately be returned to the bottom from which they were taken. Specific seasons, regulations and size limits exist for oyster beds in Great Bay, Delaware Bay, plus the Mullica, Great Egg Harbor, and Tuckahoe rivers. Check with the nearest shellfish office (Nacote Creek or Delaware Bay) for these detailed regulations.
- It is illegal to harvest shellfish on Sunday except in the seasonal waters of the Navesink and Shrewsbury rivers between Nov. 1 and April 30 when it is legal.



## 2009 New Jersey Recreational Fishing Seasons, Minimum Size & Possession Limits (Regulations in red are new this year.)

Species	Open Season	Minimum Length	Harvest & Possession Limit (per person unless noted)
American Eel	No Closed Season	6"	50
Black Drum <sup>a</sup>	No Closed Season	16"	3
Black Sea Bass <sup>a</sup>	Jan. 1–Dec. 31	12.5"*	25
Bluefish	No Closed Season	None	15
Cobia	No Closed Season	37"	2
Cod	No Closed Season	21"	No Limit
Haddock	No Closed Season	21"	No Limit
King Mackerel	No Closed Season	23"	3
Pollock	No Closed Season	19"	No Limit
Red Drum	No Closed Season	18"	1 not greater than 27"
River Herring	No Closed Season	None	35
Scup (Porgy)	Jan. 1–Feb. 28 July 1–Dec. 31	9"	50
Shad	No Closed Season	None	6
Shark <sup>a,b</sup> except prohibited species <sup>c</sup>	No Closed Season	48"	2 per vessel
Smooth Dogfish <sup>a</sup>	No Closed Season	None	No Limit
Spanish Mackerel	No Closed Season	14"	10
<b>Striped Bass or Hybrid Striped Bass</b>			
Delaware River & tributaries** (Calhoun St. bridge to Salem River & tributaries)	March 1–March 31 and June 1–Dec. 31	28"	2
Delaware River & tributaries** (upstream of Calhoun St. bridge)	March 1–Dec. 31		
Atlantic Ocean <sup>d</sup> (0–3 miles from shore)	No Closed Season		
Rivers, bay and estuaries	March 1–Dec. 31		
3–200 miles (federal waters)	Prohibited	–	0
Summer Flounder	May 23–Sept. 4	18"	6
Tautog	Jan. 1–April 30	14"	4
	May 1–July 15	–	0
	July 16–Nov. 15	14"	1
	Nov. 16–Dec. 31	14"	6
Weakfish	No Closed Season	13"	6
Winter Flounder	March 23–May 21	12"	10

**Note:** No species of fish with a minimum size limit listed above may be filleted or cleaned at sea (except striped bass if fillet is at least 28" long). Party boats licensed to carry 15 or more passengers may apply for a permit to fillet the above species, except striped bass, at sea. See *Summer Flounder*, page 12.

<b>Blue Crab</b>			
peeler or shedder	No Closed Season <sup>e</sup>	3"	1 bushel
soft	No Closed Season <sup>e</sup>	3½"	
hard	No Closed Season <sup>e</sup>	4½"	
Lobster (carapace length)	No Closed Season	3¾"	6
Hard Clam (license required)	No Closed Season	1½"	150 clams

a Regulation changes possible during 2009.

b Not including dogfish; see description on page 12 under *Sharks*.

c See page 11 for a list of *Prohibited Species*.

d Atlantic Ocean greater than three miles from shore: harvest and possession prohibited.

e Unless using non-collapsible, Chesapeake-style crab pots. See sections on crab pots, pages 14 and 19.

\* Excluding tail filaments. (See illustration, page 11.)

\*\* See *Closed Seasons* (page 12) for specifics of springtime non-offset circle hook requirements.

**Scott's Bait & Tackle Super Store**  
All Your Fresh & Saltwater Needs!

**2 Striper Surf Tournaments**  
**April 1st & Sept. 1st**  
5 Winning Places • \$10.00 Entry Fee  
Bonus: \$50.00 • Largest Bass Each Month

1 doz. free clams  
Visit store for details  
**732-988-6450**

57 Main St, Bradley Beach  
**www.ScottsBaitAndTackle.com**  
**Use this ad for 10% off your next purchase!**

### 2009 Federal Recreational Regulations for Minimum Size, Possession Limits and Seasons

See *New Jersey Division of Fish and Wildlife Recreational Fishing Seasons Minimum Size and Possession Limits* (page 15) for species not included in these federal regulations. For federal regulation questions, please contact the National Marine Fisheries Service at (978) 281-9260, or go to [www.nmfs.noaa.gov](http://www.nmfs.noaa.gov).

Species	Season	Minimum Size	Possession Limit (number per angler per day unless otherwise specified)	Notes
<b>Striped Bass</b>				Possession prohibited in federal waters (3–200 nm). See pages 11 and 15 for NJ waters.
<b>Dolphin (Mahi mahi)</b>	Year round	None	10, not to exceed 60 per vessel, which ever is less — except on a charter or headboat, then 10 per paying passenger.	For current regulations refer to <a href="http://www.nmfs.noaa.gov/sfa/hms/">www.nmfs.noaa.gov/sfa/hms/</a> or call (978) 281-9260.
<b>Marlin, White</b>	Year round	66" lower jaw fork length	None	Billfish require Highly Migratory Species (HMS) permit when fishing in federal waters (3–200 nm). For permits refer to <a href="http://www.hmspermits.gov">www.hmspermits.gov</a> or call (888) 872-8862.
<b>Marlin, Blue</b>	Year round	99" lower jaw fork length	None	During any sanctioned billfish tournaments offering prize money, non-offset circle hooks are required for lures with natural bait or natural/artificial bait combos. Refer to <a href="http://www.nmfs.noaa.gov/sfa/hms/">www.nmfs.noaa.gov/sfa/hms/</a> or call (978) 281-9260.
<b>Sailfish</b>	Year round	63" lower jaw fork length	None	
<b>Spearfish, Longbill</b>	None	None	Prohibited	All non-tournament billfish landings must be reported to NMFS within 24 hours, either online at <a href="http://www.hmspermits.gov">www.hmspermits.gov</a> or by calling (800) 894-5528. For current regulations refer to <a href="http://www.nmfs.noaa.gov/sfa/hms/">www.nmfs.noaa.gov/sfa/hms/</a> or call (727) 824-5399.
<b>Golden Tilefish</b>	Year round	None	None	For current regulations, refer to <a href="http://www.nmfs.noaa.gov/sfa/hms/">www.nmfs.noaa.gov/sfa/hms/</a> or call (978) 281-9260.
<b>Swordfish</b>	Year round	47" lower jaw fork length	<b>For anglers:</b> 1 per person, no more than 4 per vessel per trip. <b>For charter vessels:</b> 1 per paying passenger, no more than 6 per vessel per trip. <b>For headboat vessels:</b> 1 per paying passenger, no more than 15 per vessel per trip.	Swordfish, Tuna and Sharks require an HMS permit when fishing in Federal Waters (3–200 nm). For permits, refer to <a href="http://www.hmspermits.gov">www.hmspermits.gov</a> or call (888) 872-8862.
<b>Tuna, Albacore (Longfin)</b>	Year round	None	None	
<b>Tuna, Bigeye</b>	Year round	27" curved fork length	None	All non-tournament swordfish landings must be reported to NMFS within 24 hours either online at <a href="http://www.hmspermits.gov">www.hmspermits.gov</a> or by calling (800) 894-5528.
<b>Tuna, Bluefin</b>	Jan 1–Dec 31, 2009 or until season is closed	27 to <47" curved fork length	1 per vessel per trip per day, but can vary through season	All recreational bluefin tuna landings must be reported to NMFS within 24 hours either online at <a href="http://www.hmspermits.gov">www.hmspermits.gov</a> or by calling (888) 872-8862. For current regulations refer to <a href="http://www.nmfs.noaa.gov/sfa/hms/">www.nmfs.noaa.gov/sfa/hms/</a> or call (301) 713-2347 for swordfish/sharks or (978) 281-9260 for tunas.
		47 to <73" curved fork length	1 per vessel per trip per day, but can vary through season	
		≥73 curved fork length	1 per vessel per year	
<b>Tuna, Skipjack</b>	Year round	None	None	
<b>Tuna, Yellowfin</b>	Year round	27" curved fork length	3 per person per trip	
<b>Shark, Large Coastal*</b>	Year round	>54", 4.5 ft, or 1.37m fork length	<b>One</b> Shark (of any species, except prohibited species) per vessel per trip; plus <b>one</b> Atlantic sharpnose shark per person per trip (no minimum size); plus <b>one</b> bonnethead shark per person per trip (no minimum size).	See below for list of shark groups which MAY be kept or MUST be released. Swordfish, tuna and sharks require an HMS permit when fishing in federal waters (3–200 nm). For permits, refer to <a href="http://www.hmspermits.gov">www.hmspermits.gov</a> or call (888) 872-8862. Recreational fishermen (those that do not have a limited access commercial shark permit) can not sell, barter or trade any Atlantic shark or shark pieces.
<b>Shark, Small Coastal*</b>				
<b>Shark, Pelagic*</b>				

**\*Shark Species That May Be Kept:** Large Coastal Shark—blacktip, bull, lemon, nurse, tiger, spinner, scalloped hammerhead, smooth hammerhead, great hammerhead; Small Coastal Shark—Atlantic sharpnose, bonnethead, blacknose, finetooth; Pelagic Shark—Shortfin mako, blue, porbeagle, oceanic whitetip and common thresher. **Shark Species That MUST Be Released:** Atlantic angel, basking, bigeye sand tiger, bigeye sixgill, bigeye thresher, bignose, Caribbean reef, Caribbean sharpnose, dusky, Galapagos, longfin mako, narrowtooth, night, sandbar, sand tiger, sevengill, silky, sixgill, smalltail, whale and white.

Regulations concerning highly migratory species (HMS) such as tuna, swordfish, shark and billfish, are subject to change. Refer to [www.nmfs.noaa.gov/sfa/hms/](http://www.nmfs.noaa.gov/sfa/hms/) for a list of complete federal regulations for highly migratory species. For questions/clarification of the federal highly migratory species regulations, contact the National Marine Fisheries Service at (301) 713-2347 or go to [www.nmfs.noaa.gov](http://www.nmfs.noaa.gov).



### SHELLFISH LICENSE INFORMATION

A clamming license is now called a shellfish license and is required for harvesting of all species of benthic mollusks (with the exception of conchs, addressed in the commercial marine fisheries regulations), including, but not limited to, hard and soft clams, surf clams, oysters, bay scallops and mussels. Other specific commercial shellfish licenses exist such as surf clam dredge, Delaware Bay oyster dredge boat, and Delaware Bay licenses to harvest in Areas 1, 2 and 3.

Prior to harvesting any shellfish, be certain to consult the Shellfish Growing Water Classification Charts published by DEP's Bureau of Marine Water Monitoring, available at any shellfish license agent, state shellfish offices, marine police station, online at <http://www.nj.gov/dep/bmw/waterclass.htm> or call the Bureau of Marine Water Monitoring at (609) 748-2000. This summer, shellfish licenses will be available for purchase online at [WildlifeLicense.com/NJ/](http://WildlifeLicense.com/NJ/).

### Shellfish License Fees

A statutory update changed the name, fee and scope of several shellfish licenses.

- **Resident recreational shellfish:** \$10  
Harvest limit of 150 shellfish (in aggregate) per day. Sale of catch prohibited.
- **Non-resident recreational shellfish:** \$20  
Harvest limit of 150 shellfish (in aggregate) per day. Sale of catch prohibited. License valid only during the months of June, July, August and September.
- **Juvenile recreational shellfish:** \$2  
For persons under 14 years of age. Subject to same restrictions as resident or nonresident adult recreational license holders.
- **Resident commercial shellfish:** \$50  
Unlimited harvest. Shellfish may be sold only to certified dealers.
- **Non-resident Commercial Shellfish:** \$250  
Unlimited harvest. Shellfish may be sold to certified dealers only.
- **Senior citizen recreational shellfish license:** FREE (\$2 application fee)  
NJ residents age 62 years or older. Harvest limit, 150 shellfish (in aggregate) per day. Sale of shellfish prohibited.
- **Disabled veterans:** Fish and Wildlife-certified disabled veterans are eligible for free shellfish license at any shellfish license agent location. For more information on how to become certified, call (908) 637-4125.

### Crab licenses are now available at all agent locations:

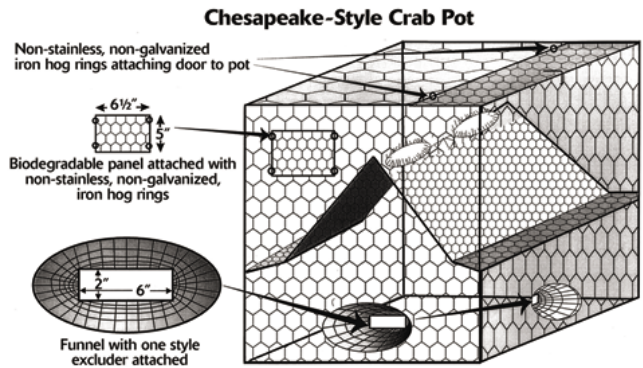
Recreational Crab Pot/Trot Line Licenses and Non-Commercial Crab Dredge Licenses are now available for purchase online at: [WildlifeLicense.com/nj/](http://WildlifeLicense.com/nj/) or at any Fish and Wildlife-certified license agent including those license agents listed at right. For a current list of Fish and Wildlife-certified license agents, look in future hunting issues of the New Jersey Fish & Wildlife Digest or go to [NJFishandWildlife.com/agentlst.htm](http://NJFishandWildlife.com/agentlst.htm).


- **Recreational crab pot/trot line license:** \$2  
Harvest limit of one bushel per day. Refer to the shellfish regulations on page 14 for all recreational crabbing regulations.
- **Non-commercial crab dredge license:** \$15  
Harvest limit of one bushel per day during the crab dredge season. Refer to the crab regulations on page 14 for all recreational crabbing regulations.

### TERRAPIN EXCLUDERS AND BIODEGRADABLE PANELS ARE REQUIRED ON CHESAPEAKE-STYLE CRAB POTS

Users of non-collapsible, Chesapeake-style crab pots should be aware that all pots set in any body of water less than 150-feet wide at mean low tide or in any manmade lagoon MUST include diamondback terrapin excluder devices. In addition, all non-collapsible, Chesapeake-style crab pots set in any body of water MUST include biodegradable panels.

These crab pot modifications will help reduce the unintentional drowning of terrapins and allow for escapement of these and other species in the event that pots are lost or abandoned. Terrapin excluder devices must be no larger than 2-inch high by 6-inch wide and securely fastened inside each funnel entrance. Biodegradable panels must measure at least 6½-inch wide by 5-inch high and be



located in the upper section of the crab pot. The panel must be constructed of, or fastened to the pot with wood lath, cotton, hemp, sisal or jute twine not greater than 3/16" diameter, or non-stainless steel, uncoated ferrous metal not greater than 3/32" diameter. The door or a side of the pot may serve as the biodegradable panel ONLY if it is fastened to the pot with any of the material specified above. Crabbers should be aware that ALL non-collapsible, Chesapeake-style crab pots MUST be licensed and marked with the gear identification number of the owner. For crab pot license information and regulations, see the regulations on page 14 and license agents below. 

### SHELLFISH AND NON-COMMERCIAL CRAB POT LICENSE AGENTS (For over-the-counter sales only.)

#### ATLANTIC COUNTY

Egg Harbor True Value, 208 N. Philadelphia Ave., Egg Harbor City .. (609) 965-0815  
Fish Finder Marina, 3645 Atlantic-Brigantine Blvd., Brigantine ..... (609) 457-5384  
Main Street Hardware, 6016 Main St., Mays Landing ..... (609) 625-4941  
NJ Div. Fish and Wildlife, 360 Rt. 9 N (milepost 51) ..... (609) 748-2021  
Zeus Sporting Goods, 6679 Black Horse Pike, Egg Harbor Twp..... (609) 646-1668

#### CAMDEN COUNTY

Towne News, 81 So. Whitehorse Pike, Berlin ..... (856) 768-9132

#### CAPE MAY COUNTY

Avalon Hodge Podge, 2389 Ocean Dr., Avalon ..... (609) 967-3274  
Beaver Dam Boat Rentals, 514 Old Beaver Dam Rd., Newport ..... (856) 447-3633  
Belleplain Supply, 346 Handmill Rd., Bellplain ..... (609) 861-2345  
Budd's Bait & Tackle, 109 Fullingmill Rd., Villas ..... (609) 886-6935  
Capt. Tate's Tackle Box, 450 No. Route 47, Cape May CH ..... (609) 861-4001  
City of Ocean City, 861 Asbury Ave., Ocean City ..... (609) 525-9328  
Just Sports, 21 W. Mechanic St., Cape May CH ..... (609) 465-6171  
Upper Township, 2100 Tuckahoe Rd., Tuckahoe ..... (609) 628-2805  
Wal\*Mart, 3159 Rt. 9S, Rio Grande ..... (609) 465-7760

#### CUMBERLAND COUNTY

Big Daddy's Sport Haven, 595 Sherman Ave., Millville ..... (856) 453-9009  
Delaware Bay Office, 1672 E. Buckshutem Rd., Millville ..... (856) 785-0730  
Shire Products, 389 S. Lincoln Ave., Vineland ..... (856) 692-3646

#### GLOUCESTER COUNTY

Sportsman's Outpost, 2517 Fries Mill Rd., Williamstown ..... (856) 881-3244

#### MERCER COUNTY

Brunswick Sports, 1177 Brunswick Ave., Trenton ..... (609) 392-4444

#### MIDDLESEX COUNTY

Auto Parts of Woodbridge, 108 Main St., Woodbridge..... (732) 634-6264  
Sayreville Sportsman Shop, 52 Washington Ave., Sayreville..... (732) 238-2060

#### MONMOUTH COUNTY

Brielle Tackle, 800 Ashley Ave., Brielle ..... (732) 528-5720  
L & H Woods and Water, 2045 Rt. 35, Wall ..... (732) 282-1812  
T & A Tackle and Bait, 369 Rt. 36, Port Monmouth ..... (732) 787-3853

#### OCEAN COUNTY

American Sportsman, 857 Mill Creek Rd., Manahawkin ..... (609) 597-4104  
Bob Kislis's, 1214 Rt. 37 East, Toms River ..... (732) 929-9300  
Chumbucket, 381 Rt. 9, West Creek ..... (609) 294-2500  
Downes Bait & Tackle, 287 Brennan Concourse, Bayville ..... (732) 269-0137  
Fish Bonz Bait & Tackle, 103 Lacey Rd., Forked River ..... (609) 971-2928  
Grizz's Forked River B & T, 232 N. Main St., Forked River ..... (609) 693-9298  
Lacey Marine, 308 Rt. 9, So., Forked River ..... (609) 693-0151  
L & H Woods and Water, 403 Rt. 9, Waretown ..... (609) 242-1812  
Pell's Fish & Sport Shop, 335 Mantoloking Rd., Bricktown ..... (732) 477-2121  
Surf City Bait & Tackle, 317 Long Beach Blvd., Surf City ..... (609) 494-2333  
Tip's Hardware, 218 Main St., West Creek ..... (609) 296-3192

#### SOMERSET COUNTY

Efinger Sporting Goods, 513 W. Union Ave., Bound Brook ..... (732) 356-0604