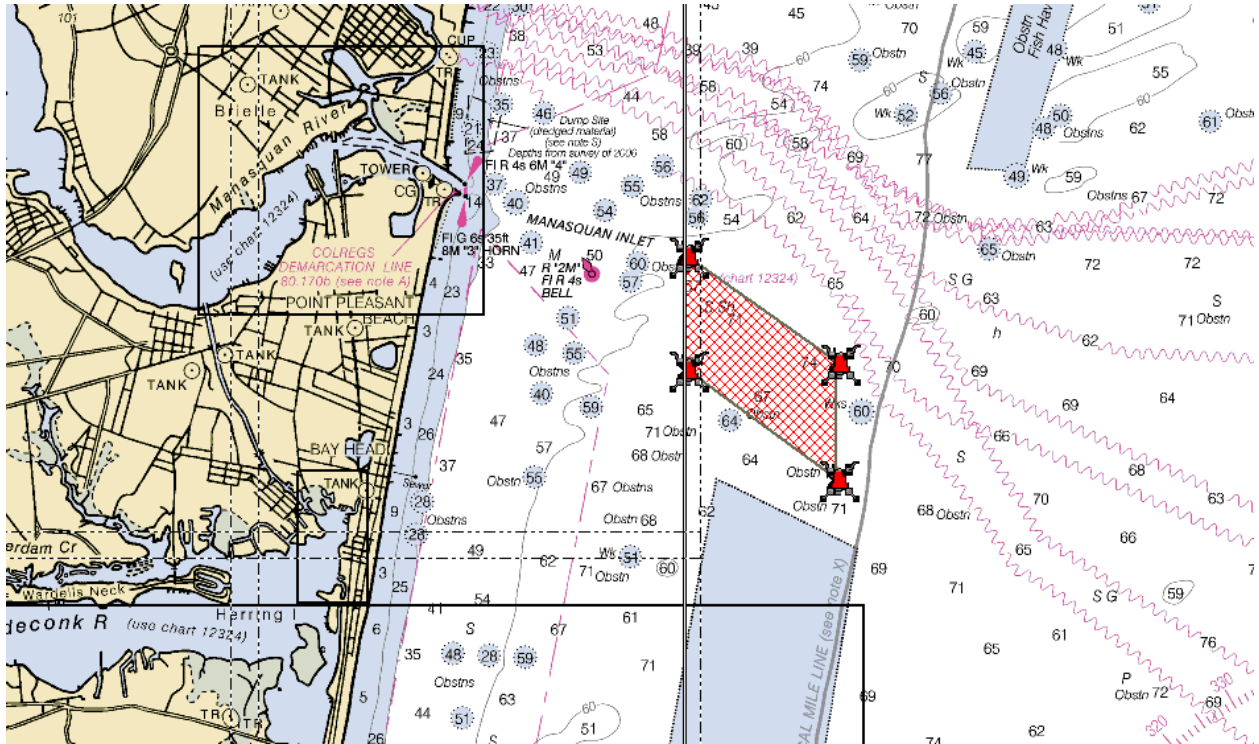


## Manasquan Inlet Reef



Latitude

Longitude

NW Corner	40 05.653'	074 00.000'
NE Corner	40 04.945'	073 58.728'
SW Corner	40 04.891'	074 00.000'
SE Corner	40 04.175'	073 58.728'

Distance Offshore = 1.7 n.m

Reef Area = 0.95 sq. mi.

Depth Range = 67-74 ft.