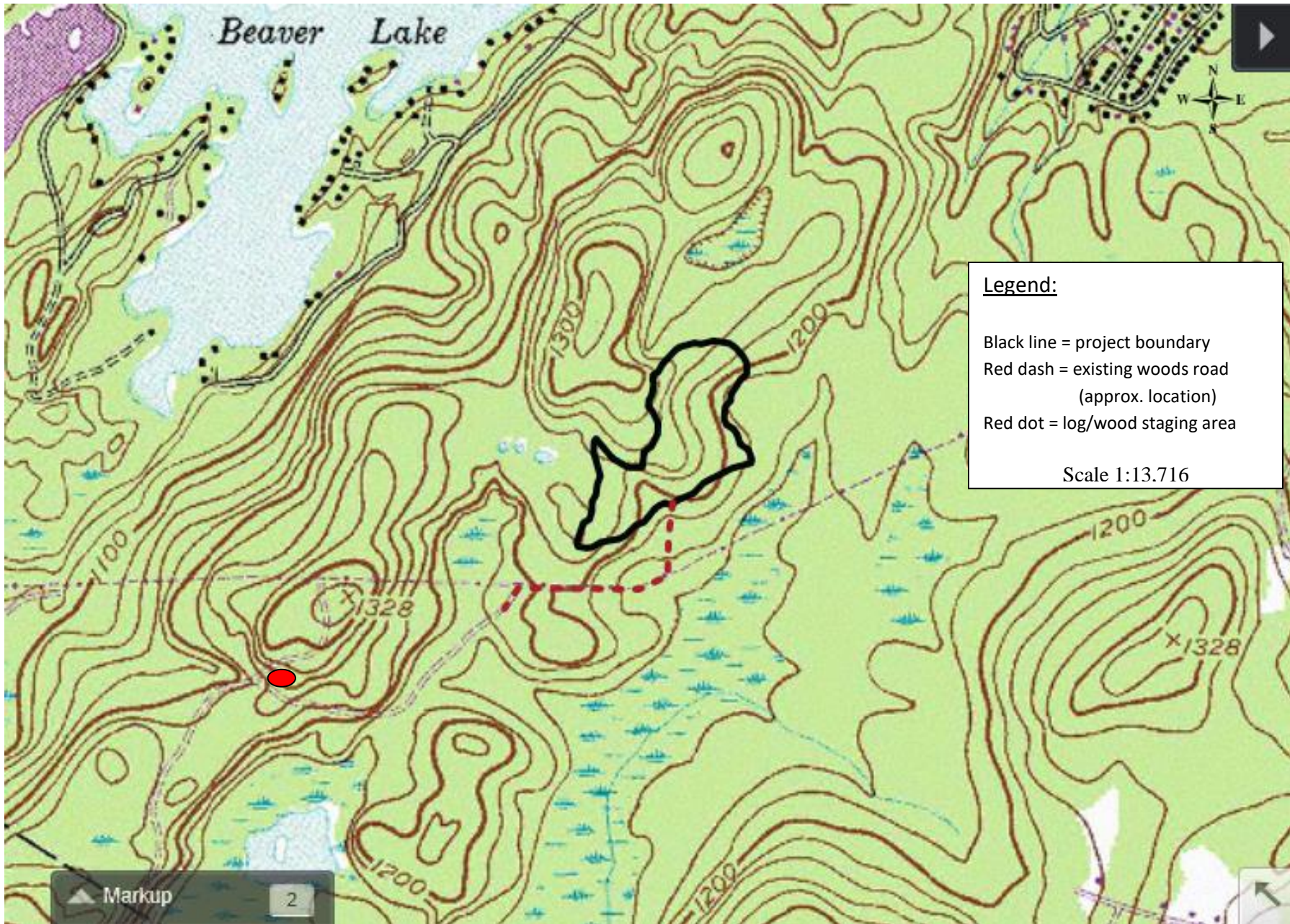
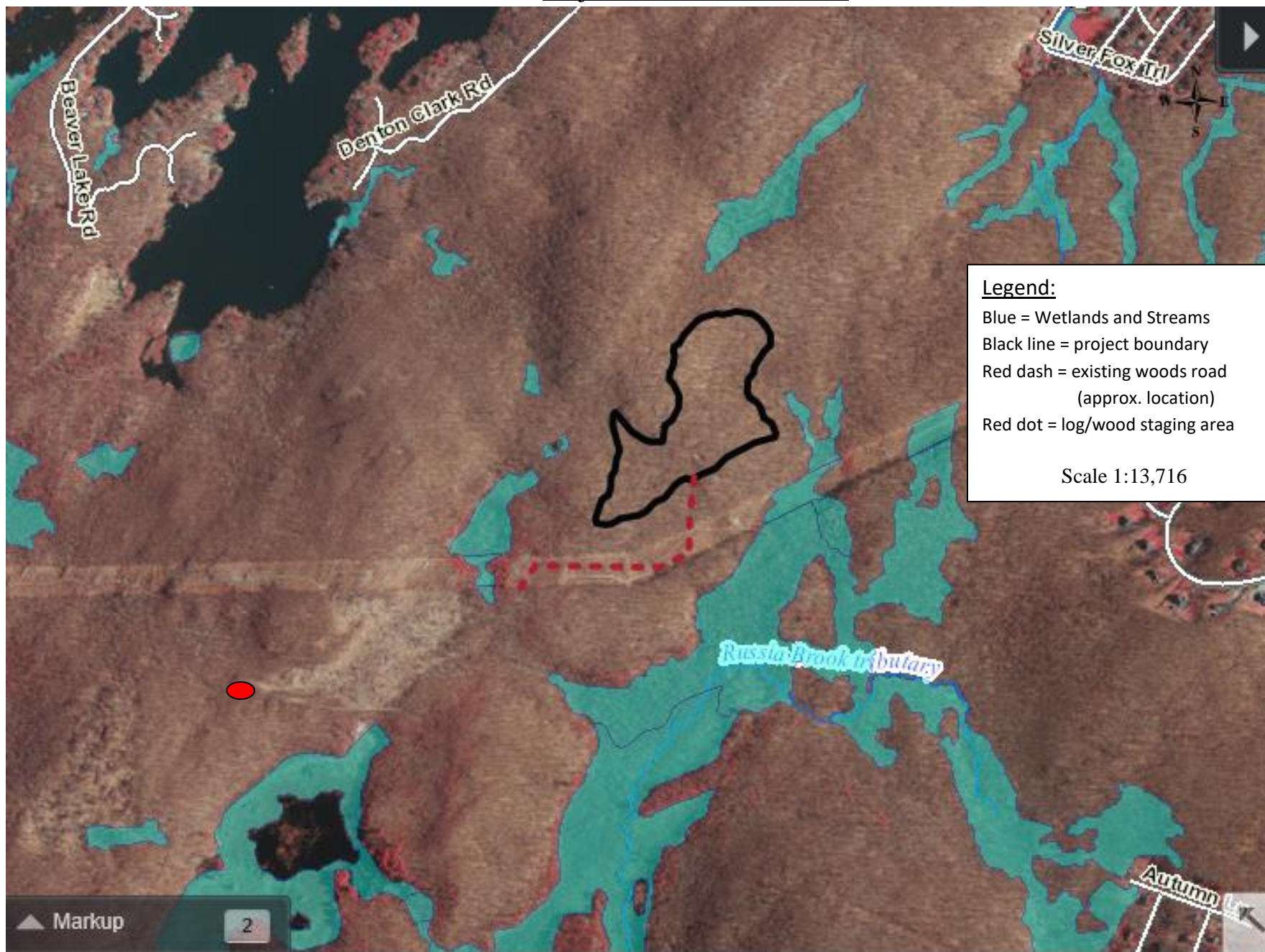


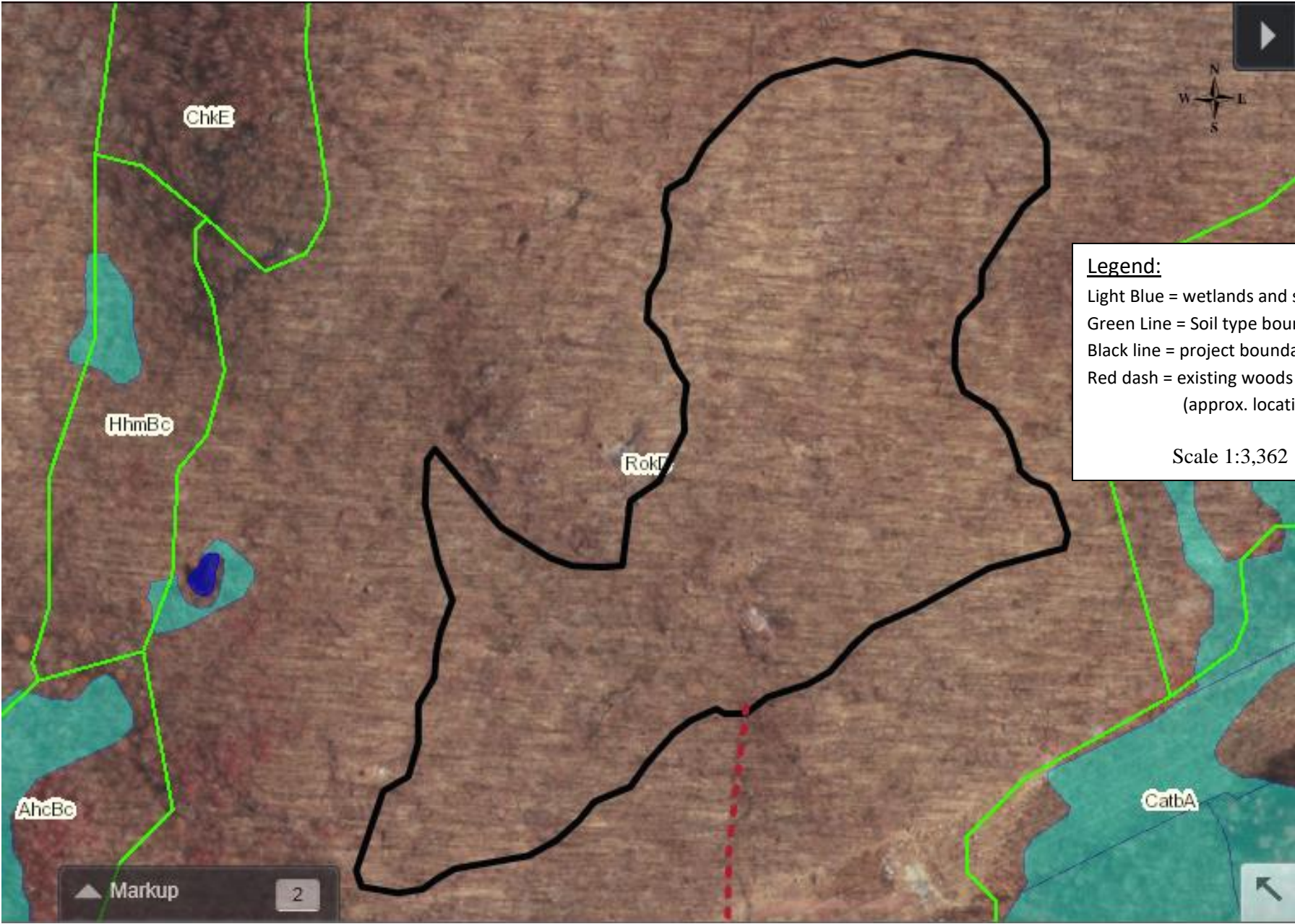
## Project Location and Topography



Project Location on 2015 IR



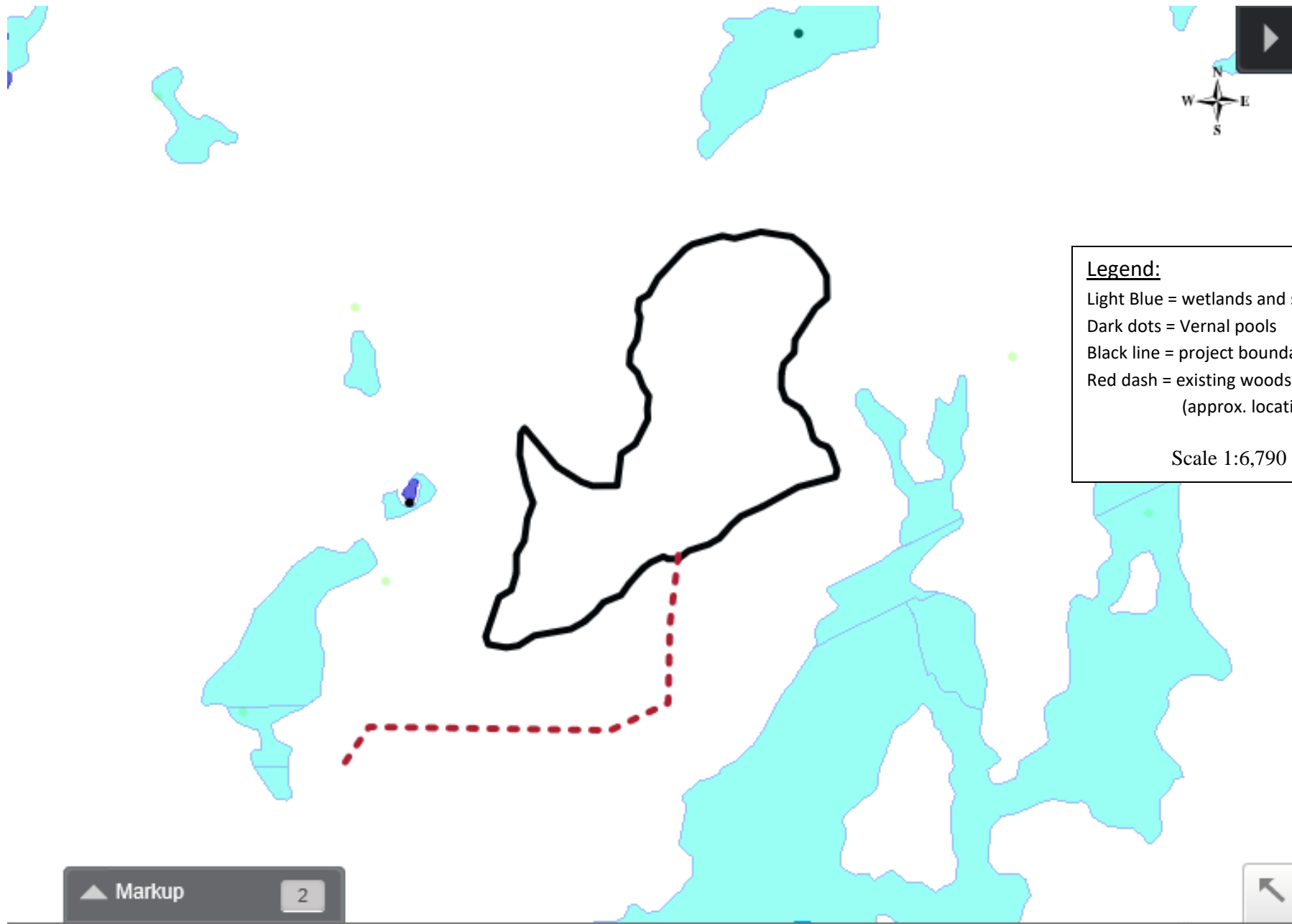
Project Area on 2015 IR with Soils



**Legend:**  
Light Blue = wetlands and streams  
Green Line = Soil type boundary  
Black line = project boundary  
Red dash = existing woods road  
(approx. location)

Scale 1:3,362

Project Area – Wetlands, Streams and Vernal Pools



**Legend:**  
Light Blue = wetlands and streams  
Dark dots = Vernal pools  
Black line = project boundary  
Red dash = existing woods road  
(approx. location)  
  
Scale 1:6,790

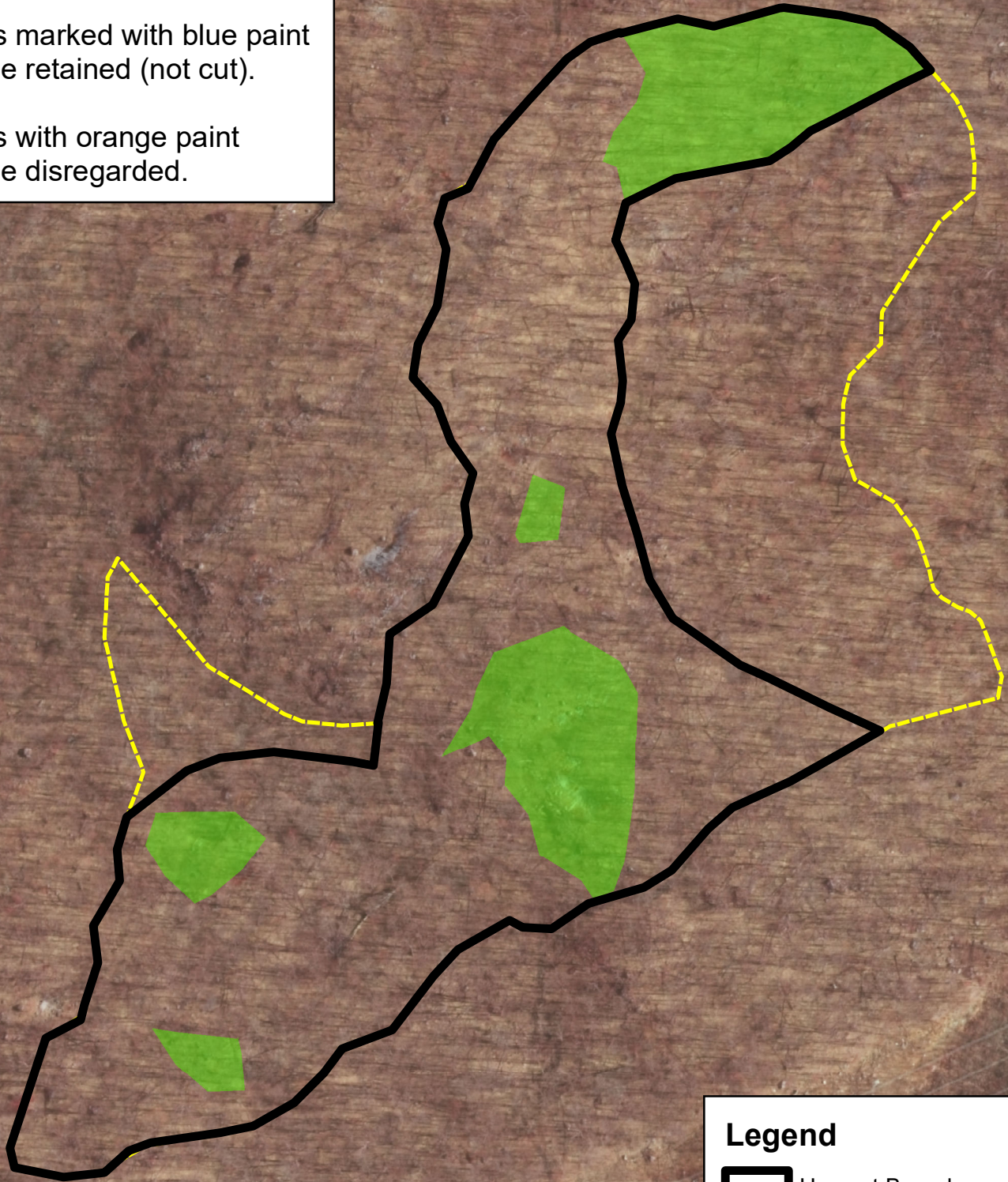
# 2019 Harvest Area Revision - Stand 18, Sparta Mt WMA

New harvest boundary is marked with blue dots.




All trees marked with blue paint are to be retained (not cut).

All trees with orange paint are to be disregarded.

N



## Legend

-  Harvest Boundary
-  Harvest Exclusion Blocks
-  Original Harvest Boundary

Map created by R. Hasko 2019

0 125 250 500 Feet

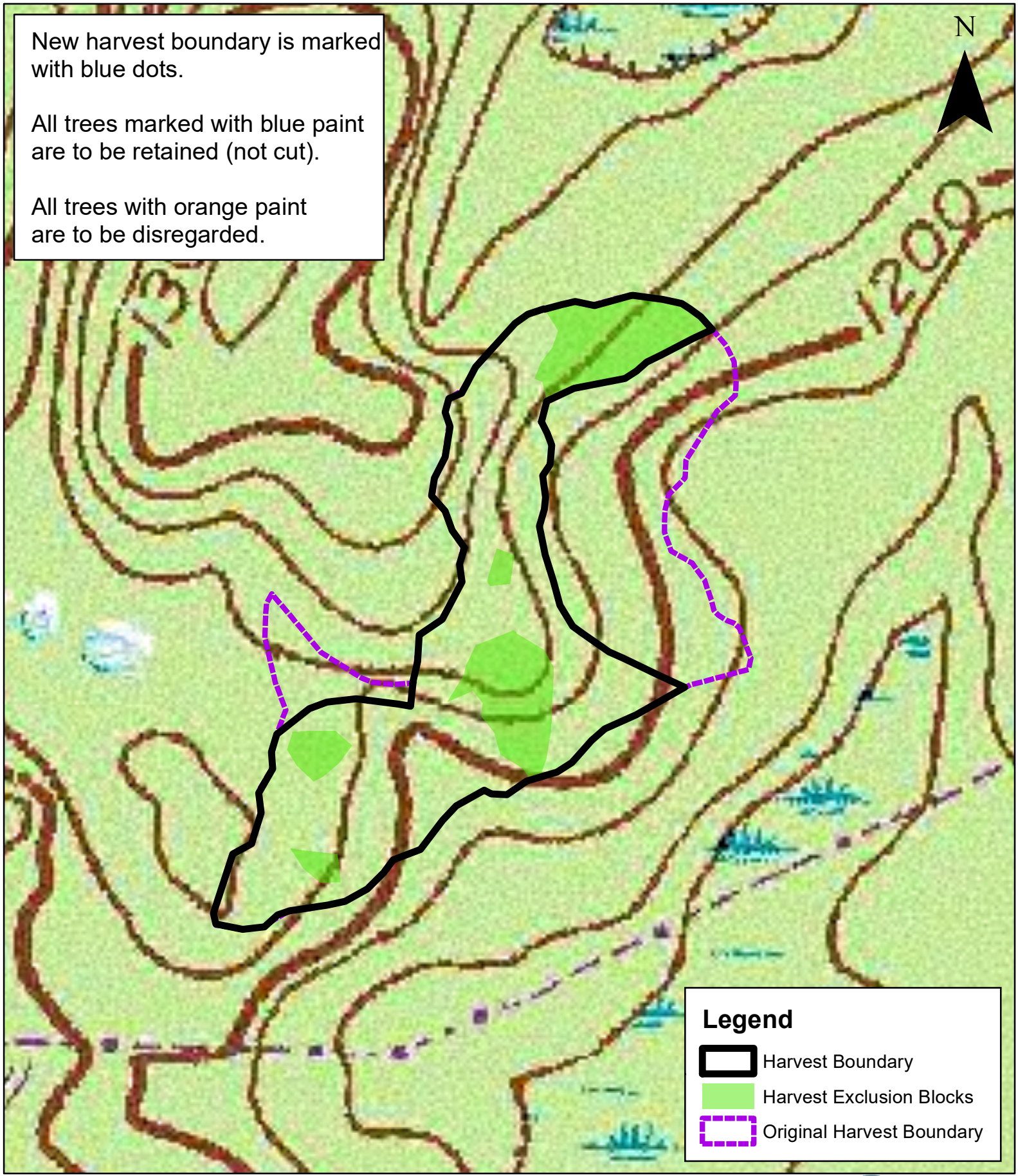
# 2019 Harvest Area Revision - Stand 18, Sparta Mt WMA

New harvest boundary is marked with blue dots.




All trees marked with blue paint are to be retained (not cut).

All trees with orange paint are to be disregarded.

N



## Legend

-  Harvest Boundary
-  Harvest Exclusion Blocks
-  Original Harvest Boundary

Map created by R. Hasko 2019

0 190 380 760 Feet

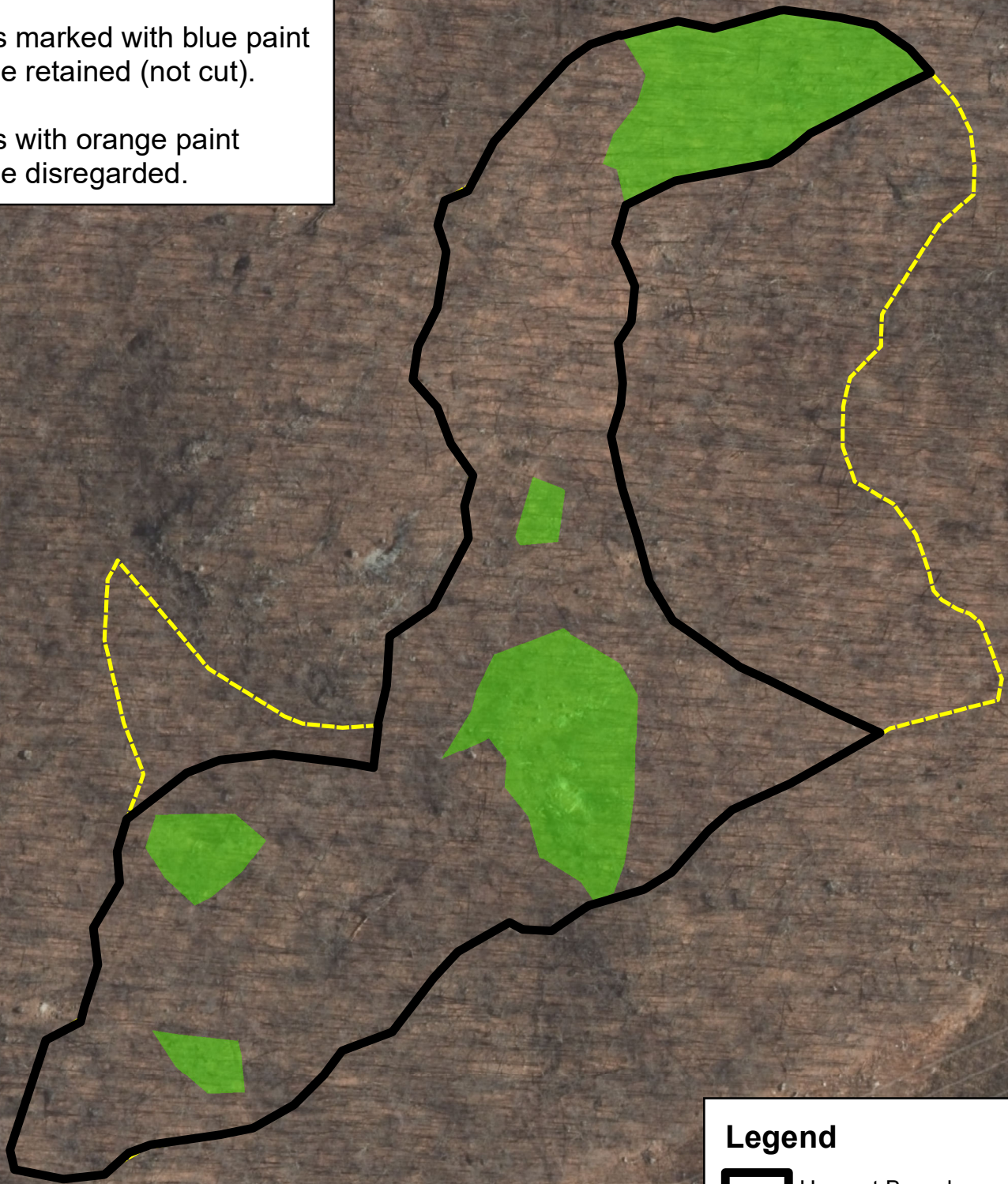
# 2019 Harvest Area Revision - Stand 18, Sparta Mt WMA

New harvest boundary is marked with blue dots.




All trees marked with blue paint are to be retained (not cut).

All trees with orange paint are to be disregarded.

N



## Legend

-  Harvest Boundary
-  Harvest Exclusion Blocks
-  Original Harvest Boundary

Map created by R. Hasko 2019

0 125 250 500 Feet