

47.20 20

GEOLOGICAL MAP OF NEW JERSEY

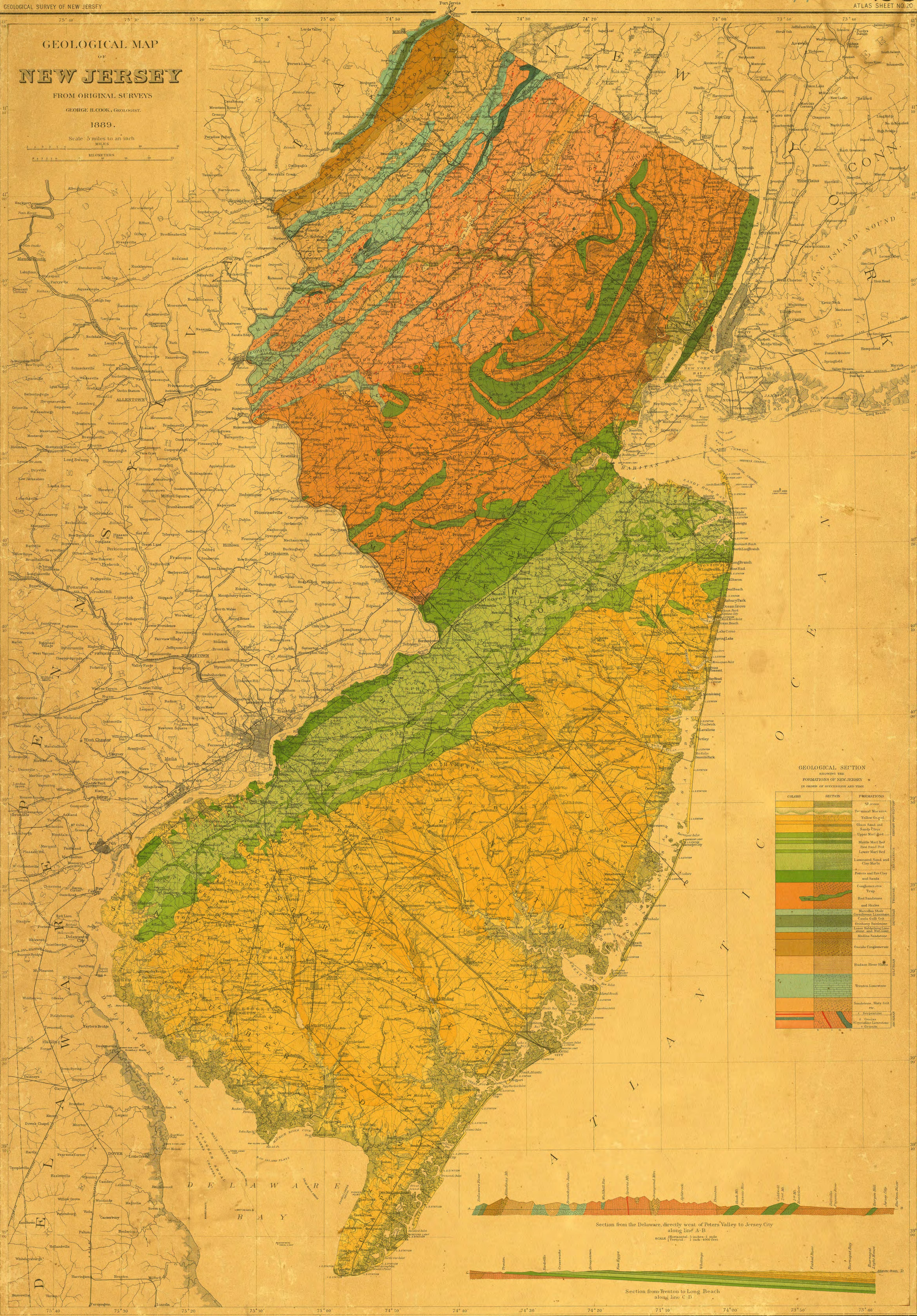
FROM ORIGINAL SURVEYS

GEORGE H. COOK, GEOLOGIST.

1889.

Scale 5 miles to an inch

Scale 5 miles to an inch
KILOMETERS



GEOLOGICAL SECTION
SHOWING THE
FORMATION OF NEW JERSEY
IN ORDER OF DEPOSIT AND AGE

COLORS	SECTION	FORMATIONS
		Albion
		Terminal Moraine
		Yellow Gravel
		Glacial Sand and Gravel
		Upper Marl Grit
		Middle Marl Grit
		Red Sand and Gravel
		Lower Marl Grit
		Laminated Sand and Clay Marls
		Porter and Hartley
		Tram
		Red Sandstone and Shales
		Marcellus Shale
		Clinton Limestone
		Clinton Grit
		Oriskany Sandstone
		Lower Trenton (see same and Trenton)
		Middle Trenton
		Clinton Conglomerate
		Hudson River Shale
		Trenton Limestone
		Sandstone, Shale, etc.
		St. Lawrence
		St. Lawrence Limestone
		St. Lawrence

Section from the Delaware, directly west of Peters Valley to Jersey City
along line A-B

SCALE: Horizontal, 5 inches = 1 mile
Vertical, 1 inch = 400 feet

Section from Trenton to Long Beach
along line C-D