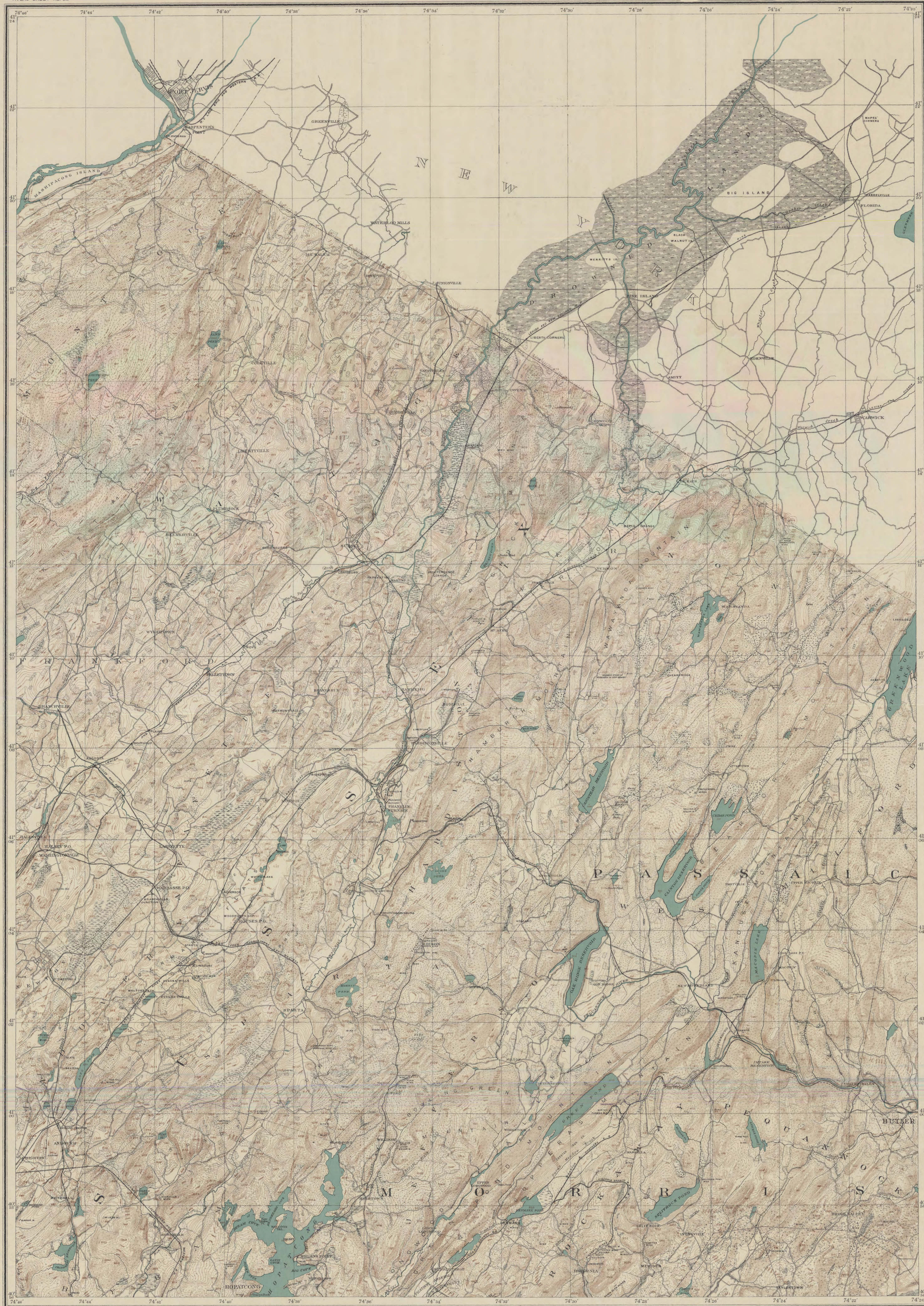


HENRY B. KÜMMEL, State Geologist C. C. VERMEULE, Topographer

ORIGINAL SURVEY, 1880 AND, 1883
PRINCIPAL FEATURES REVISED, 1909.
EDITION OF 1910

ATLAS SHEET No. 22



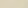
NOTE. The curved lines are level lines drawn on the earth's surface. All points through which any given line passes are at the same level and their height above mean sea level is shown by the figures on the line. The rise or fall from any line to the next is as the figures will show 20 feet. Figures not on any line show the actual elevation of the surface at a point indicated by a small cross.

Scale: 1 Mile to an Inch.

A horizontal scale bar with three units of measurement. The top scale is in miles, with markings at 1, 2, and 3. The middle scale is in yards, with markings at 1000, 2000, and 3000. The bottom scale is in meters, with markings at 1000, 2000, and 3000. The bar is divided into segments corresponding to these units.

♂ MAGNETIC IRON-ORE MINES
 ● HEMATITE & ZINC MINES
 X QUARRIES
 △ Geologic Stations
 RAILROAD STATIONS

 WOODED SWAMP


 FRESH MARSH
 COUNTY BOUNDARIES
 TOWNSHIP BOUNDARIES
 BOROUGH BOUNDARIES

Post Offices are in Roman Capitals, thus: **HIBERNIA**.
 Localities, not Post Offices are in Gothic, thus: **MERIDEN**