

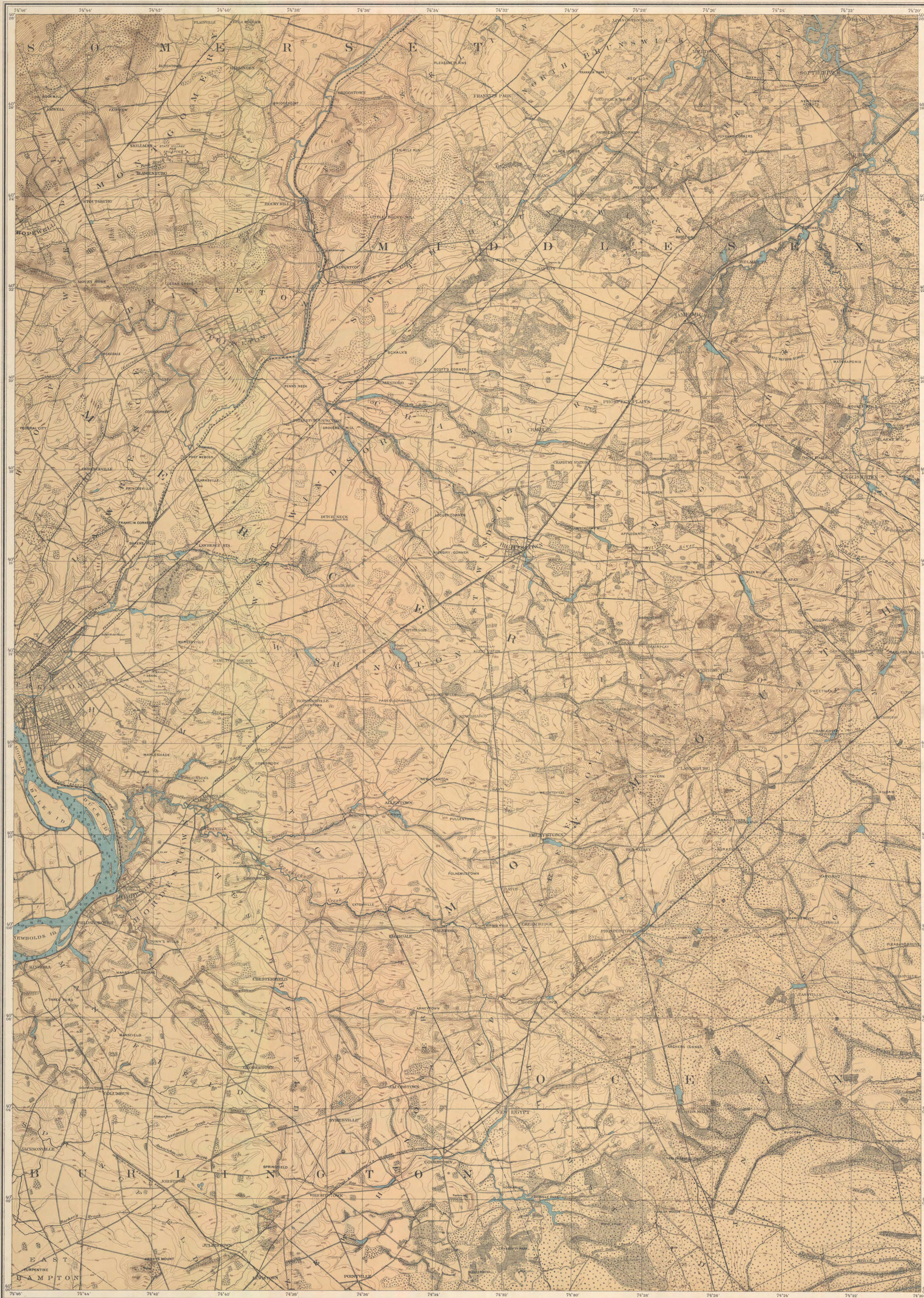
GEOLOGICAL SURVEY OF NEW JERSEY

HENRY B. KÜMMEL, State Geologist

C. C. VERMEULE, Topographer

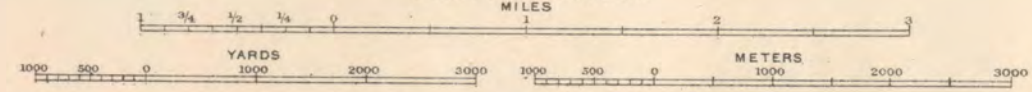
ORIGINAL SURVEY 1885
PRINCIPAL FEATURES REVISED 1904

ATLAS SHEET No. 28



NOTE: The curved lines are level lines drawn on the earth's surface. All points through which any given line passes are at the same level and their height above mean sea level is shown by the figures on the line. The rise or fall from any line to the next is as the figures will show 10 or 20 feet. Figures not on any line show the actual elevation of the surface at a point indicated by a small cross. Figures on blue ground indicate the depth of water at mean low tide.

Scale: 1 mile to an inch.



QUARRIES
RAILROAD STATIONS
TIDE MARKS
FRESH MARSH
COUNTY BOUNDARIES
TOWNSHIP BOUNDARIES