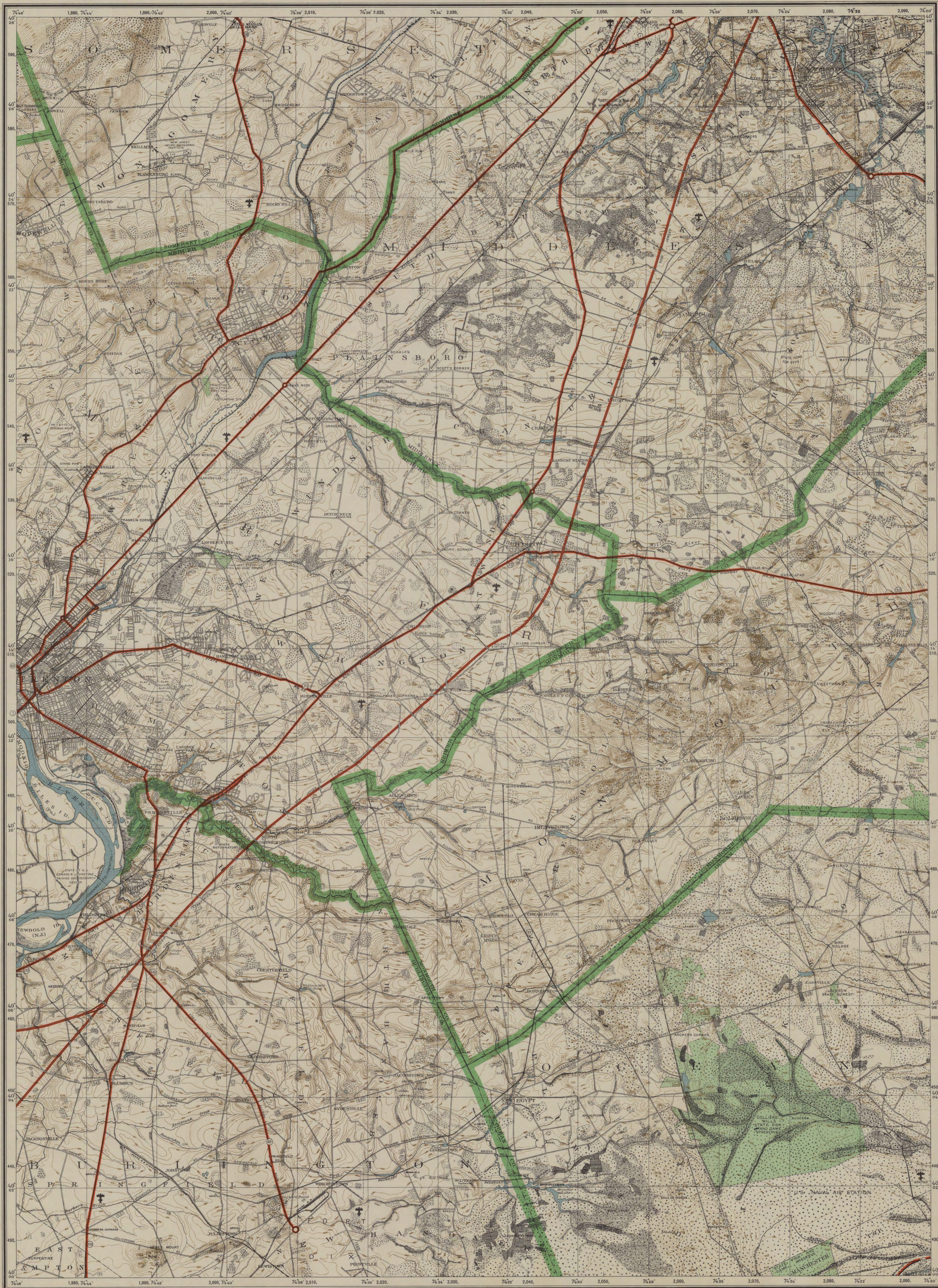
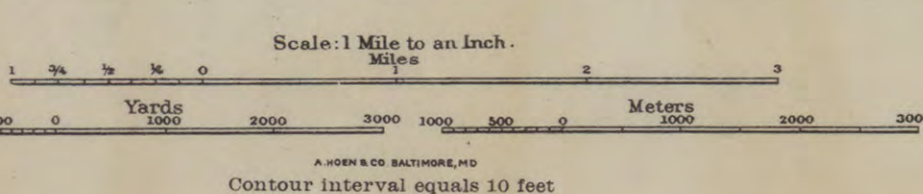
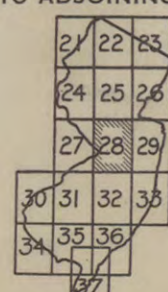


DIVISION OF PLANNING AND DEVELOPMENT
KENNETH H. CREVELING, Director
MEREDITH E. JOHNSON, State Geologist



NOTE—The curved lines are level lines drawn on the earth's surface. All points through which any given line passes are at the same level and their height above mean sea level is shown by the figures on the line. The line or lines from any line to the next line are the figures will show 10 feet. Figures not on any line show the actual elevation of the surface at a point indicated by a small cross. Figures on the blue ground indicate the depth of water at mean low tide, as revised for 1916. U. S. Coast Charts should be used for water depths. The numbers shown at the corners are for the U. S. Coast Chart Grid System. (The last three digits are omitted viz: 1,740, equals 1,000,000 feet.)

KEY TO ADJOINING SHEETS



LEGEND

- RAILROAD STATIONS
- COUNTY BOUNDARIES
- TOWNSHIP AND BOROUGH BOUNDARIES
- STATE HIGHWAYS
- OTHER PUBLIC ROADS AND STREETS
- PRIVATE OR PRIMITIVE ROADS
- LICENSED AIRPORTS
- ACTIVE MINES
- INACTIVE MINES
- QUARRIES

- CEMETERY
- Grading Station
- WOODED SWAMP
- CRANBERRY BOG
- TIDE MARSH
- FRESH MARSH
- PARKS
- CANAL
- DAMS

ORIGINAL SURVEY MADE UNDER DIRECTION OF C. C. VERMEULE
TOPOGRAPHER IN 1880-3, 1957 REVISION BY STAFF OF THE BUREAU
OF GEOLOGY AND TOPOGRAPHY