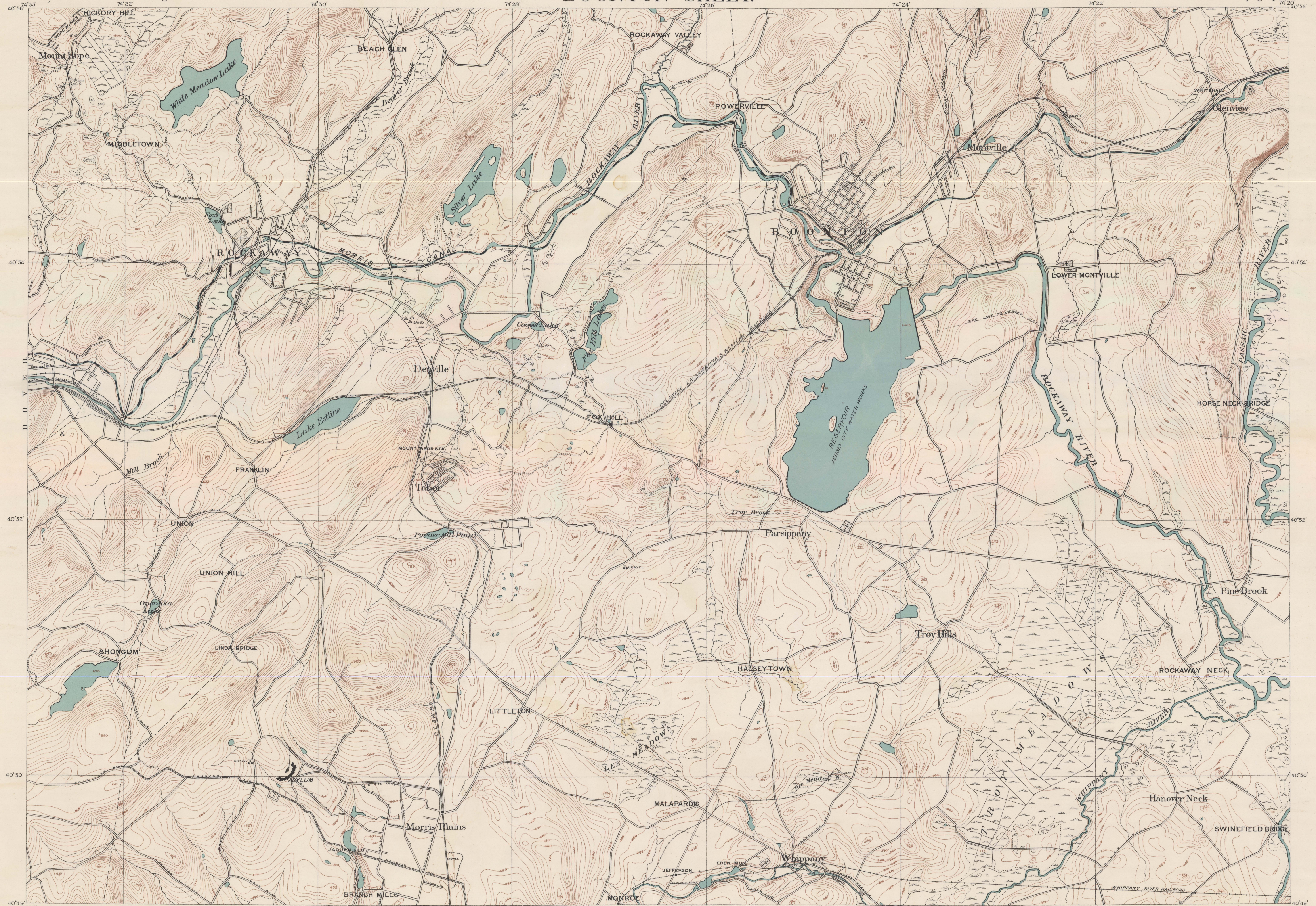


GEOLOGICAL SURVEY OF NEW JERSEY.
BOONTON SHEET.

Henry B. Kimmel, State Geologist.

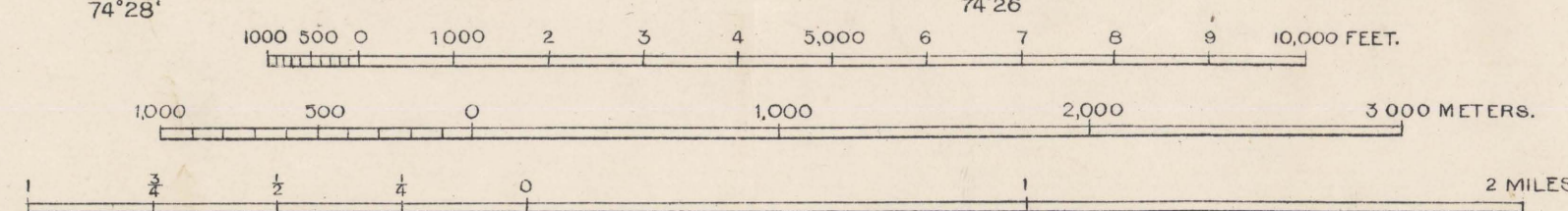
C.C. Vermeule, Topographer.



DOVERSTANHOPE	BOONTON	PATERSON
CHESTER	MORRISTOWN	NEWARK

Key to adjoining sheets.

Single track Railroads
Railroads with two or more tracks.
Quarries.
Pits.



Contour lines and figures show elevation
in feet above mean sea level.
Contour Interval in level country 10 feet;
in hilly country 20 feet.

Surveyed in 1887.
Resurveyed in 1904.
(Reprint) Edition of 1904.