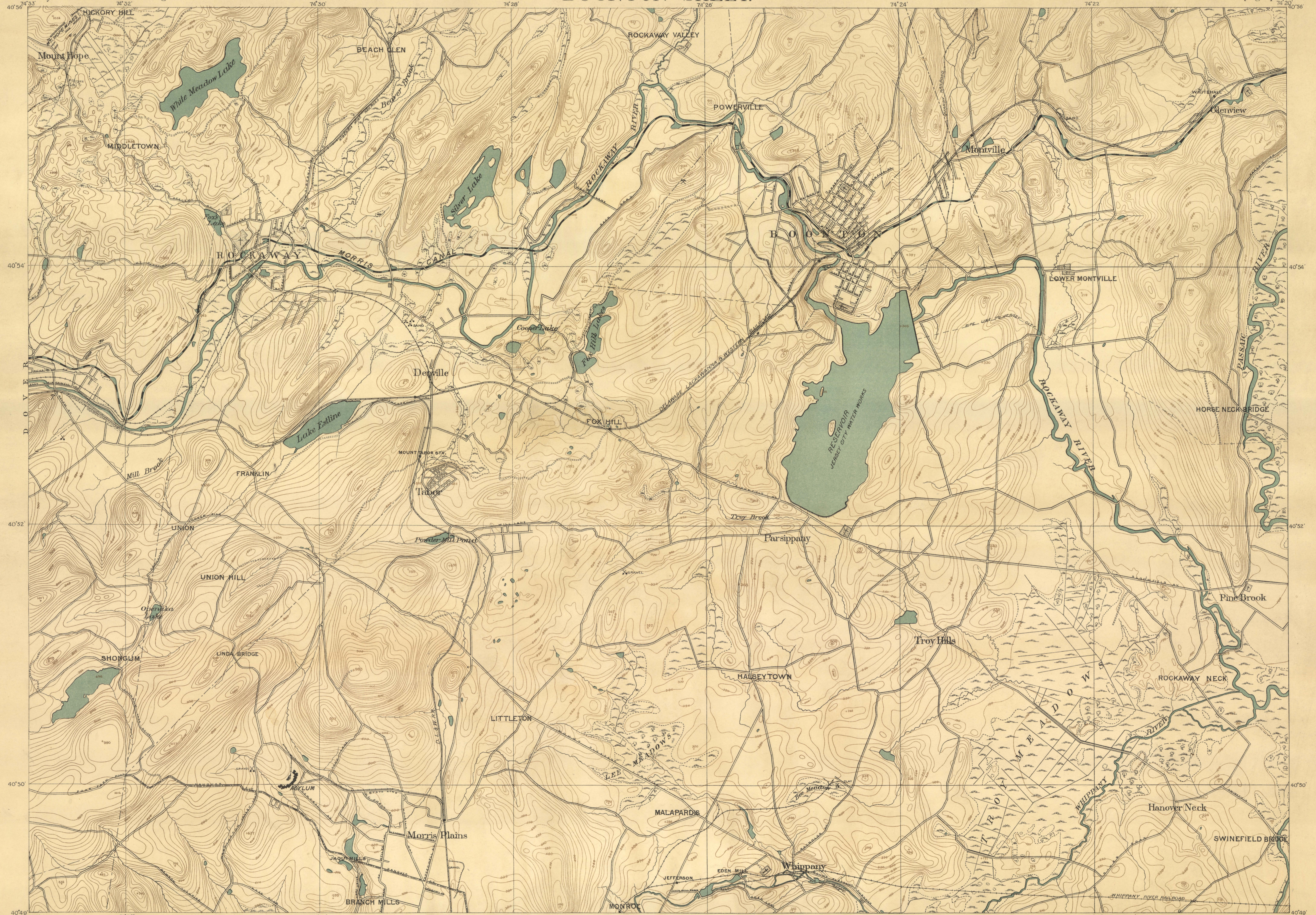


GEOLOGICAL SURVEY OF NEW JERSEY. BOONTON SHEET.

Henry B. Kimmel, State Geologist.

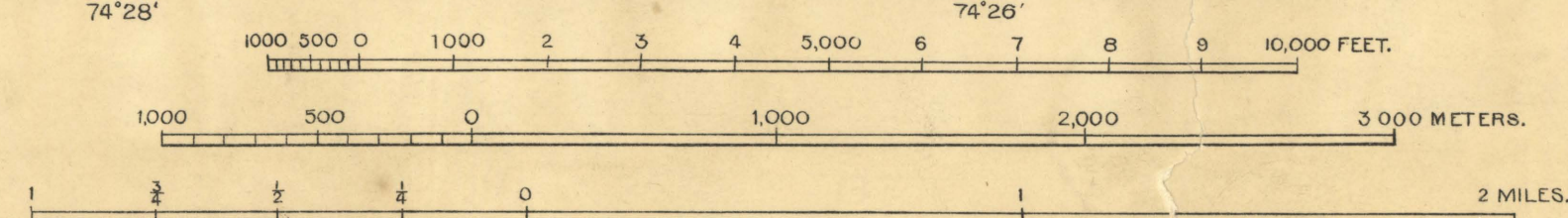
C.C. Vermeule, Topographer.



DOVER STANHOPE	BOONTON	PATERSON
CHESTER	MORRISTOWN	NEWARK

Key to adjoining sheets.

- Single track Railroads
- Railroads with two or more tracks.
- Quarries.
- Pits.



Contour lines and figures show elevation
in feet above the sea level.
Contour interval in level country 10 feet;
in hilly country 20 feet.

Surveyed in 1887.
Resurveyed in 1904.
Edition of 1905