



State of New Jersey  
Department of Environmental Protection  
Geological Survey

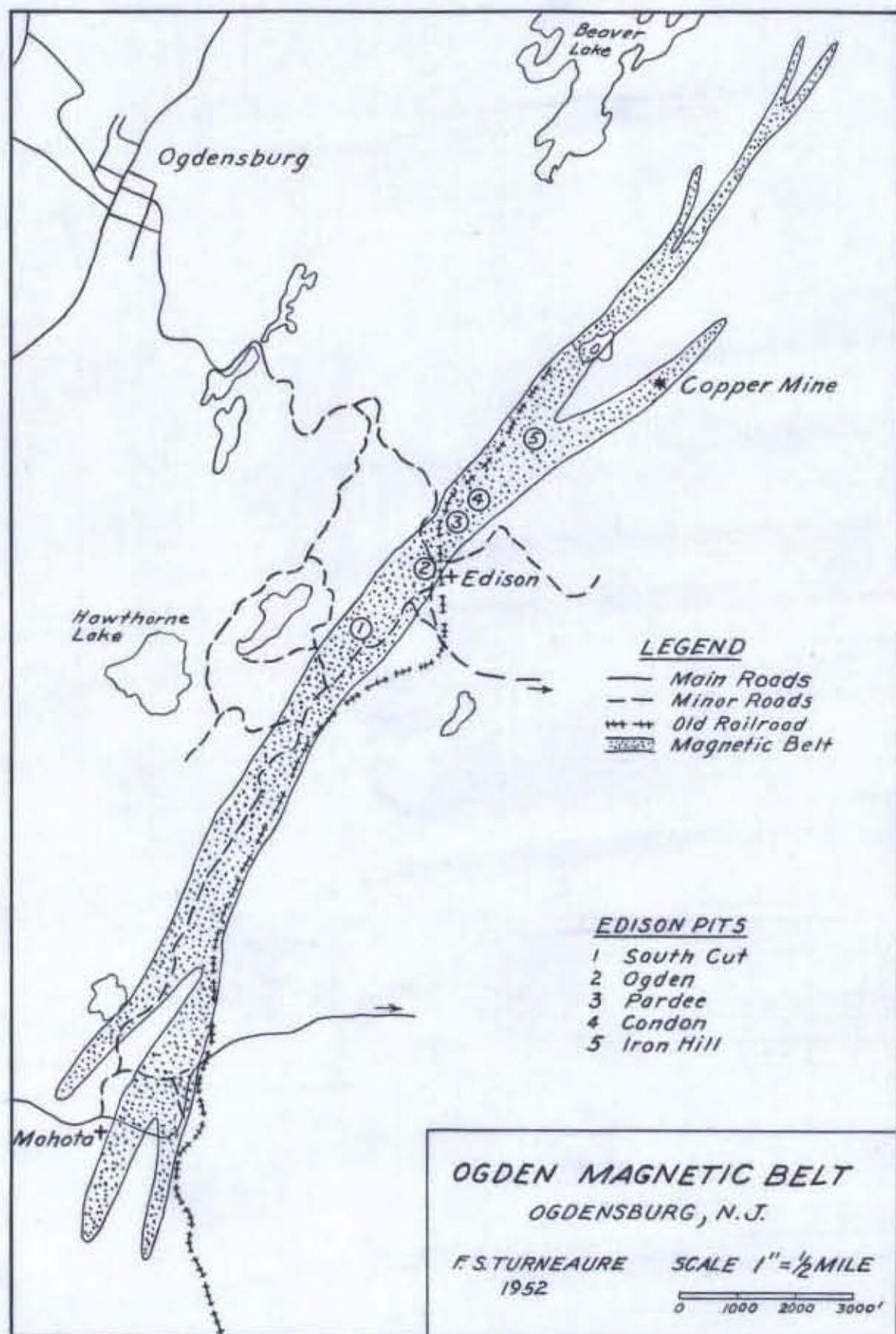


**Information Disclaimer**

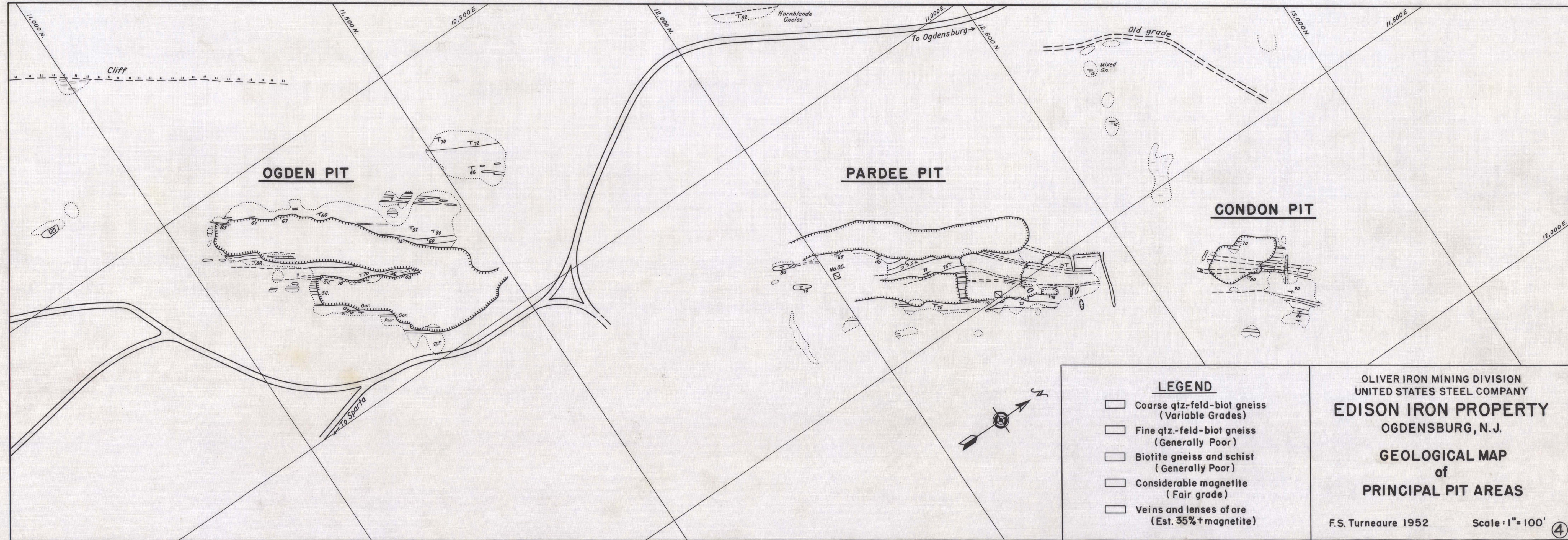
**The State of New Jersey makes great effort to provide secure, accurate and complete information. However, portions of the information contained here may be incorrect or not current.**

**The State of New Jersey, its officers, employees or agents shall not be liable for damages or losses of any kind arising out of or in connection with the use or performance of information, including but not limited to, damages or losses caused by reliance upon the accuracy or timeliness of any such information, or damages incurred from the viewing, distributing, or copying of those materials.**

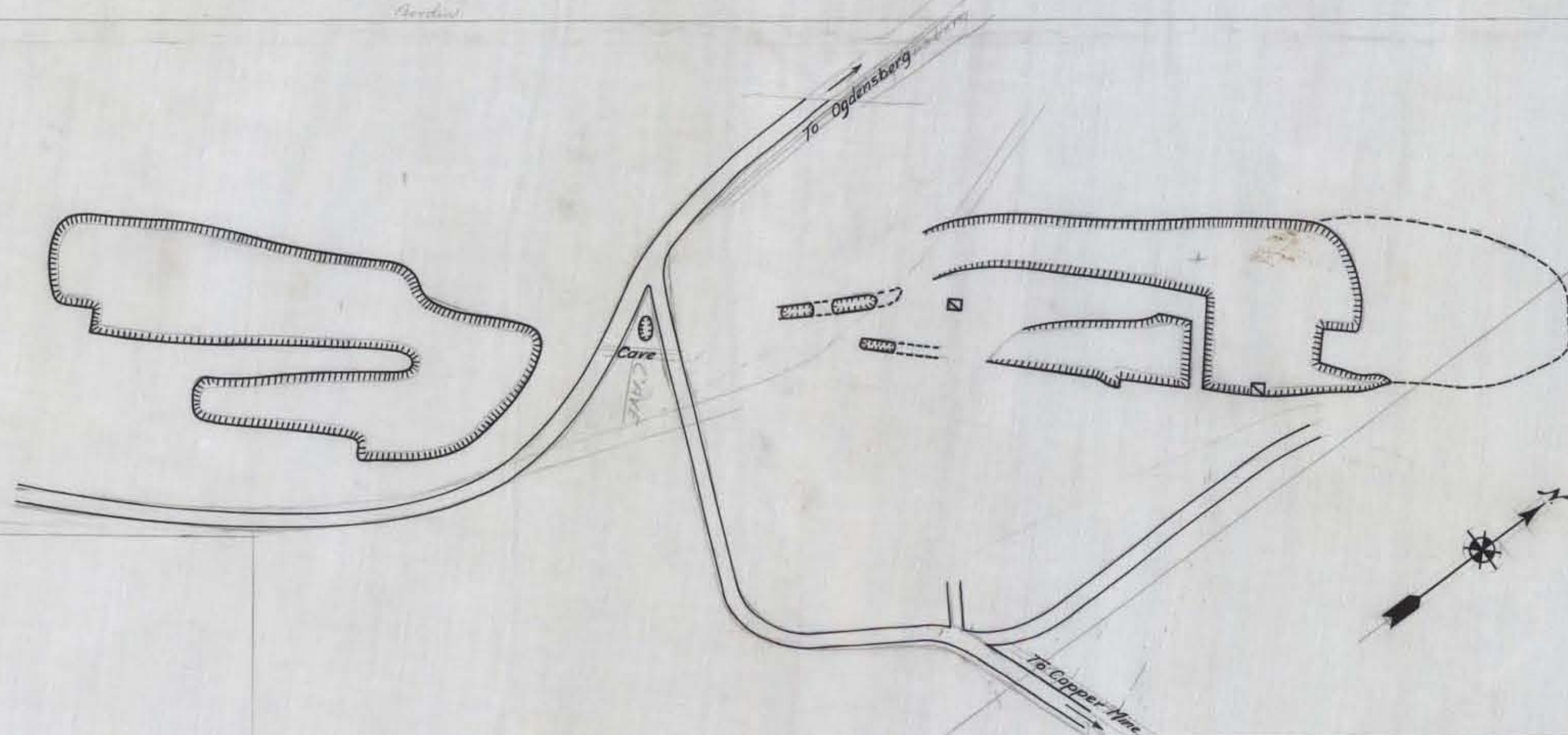
**The materials and information provided here are provided "as is." No warranty of any kind, implied, expressed, or statutory, including but not limited to the warranties of non-infringement of third party rights, title, merchantability, fitness for a particular purpose, and freedom from computer virus, is given with respect to the contents of this document.**









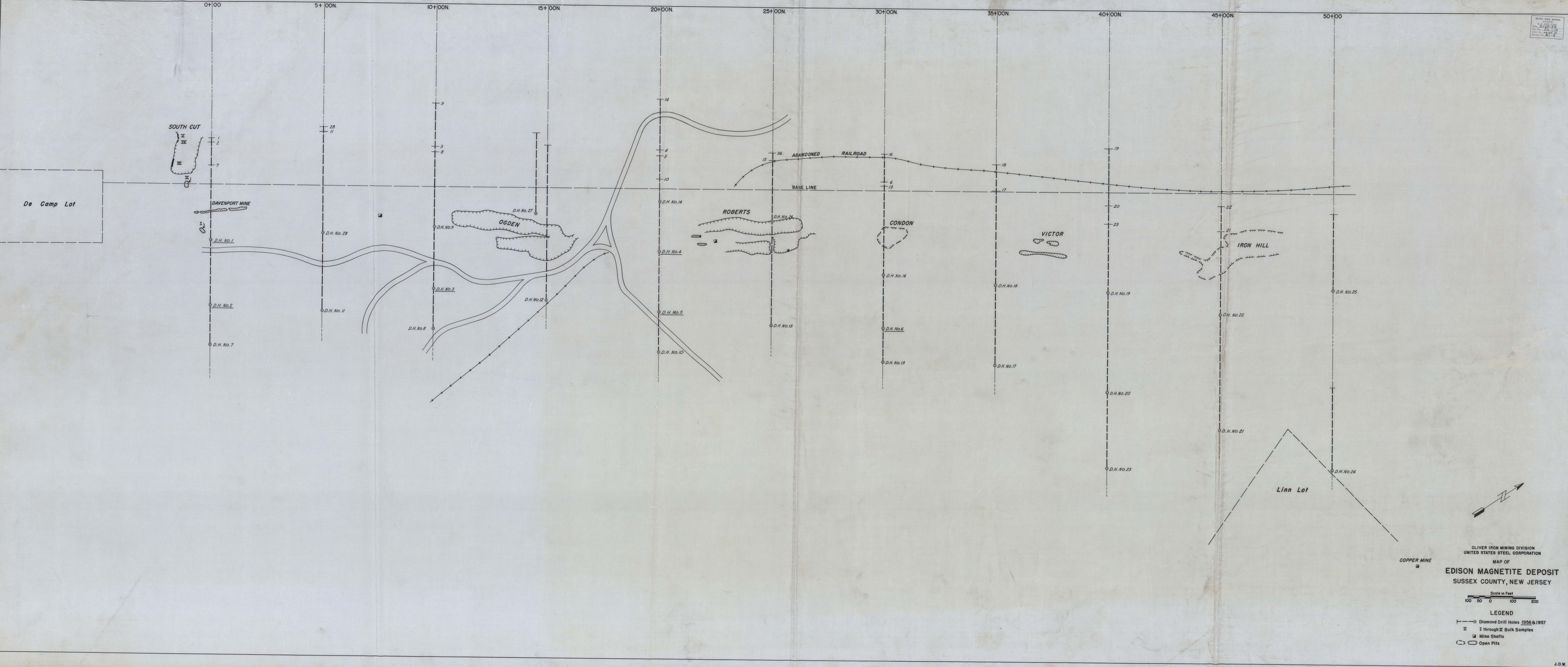


MAP OF  
MAIN EDISON OPEN CUTS  
EDISON, N.J.

Scale of ft. 1:100  
Nov - 1935



OLIVER IRON MINING DIVISION  
UNITED STATES STEEL CORPORATION  
Date: 2/22/23  
File No.: 12-73  
Case No.: 14-1-2  
Drawing No.: A1-9



OLIVER IRON MINING DIVISION  
UNITED STATES STEEL CORPORATION  
MAP OF  
**EDISON MAGNETITE DEPOSIT**  
SUSSEX COUNTY, NEW JERSEY

Scale in Feet  
100 50 0 100 200

**LEGEND**  
—●— Diamond Drill Holes 1956 & 1957  
II I through IV Bulk Samples  
■ Mine Shafts  
○ Open Pits





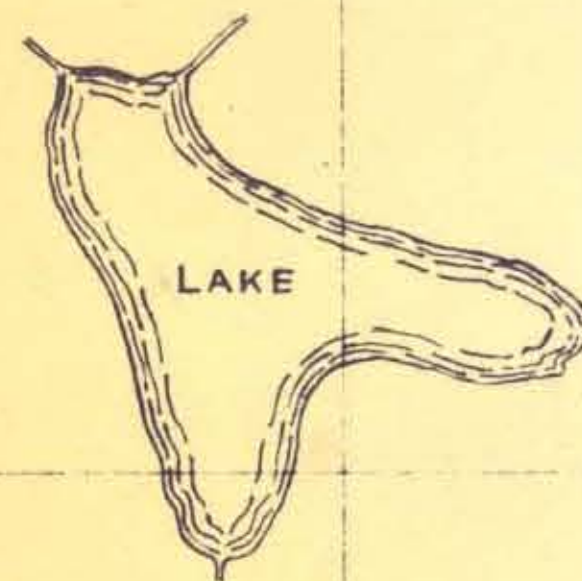


MAGNETIC NORTH BASED ON START OF 1921 SURVEY BETWEEN CORNERS #15 TO #14 WITH A BEARING OF S. 52° 50' W. OF THE THOMAS A. EDISON DEED OF 1914, AND NOW DESIGNATED AS THE 53RD COURSE WITH A BEARING OF S. 52° 51' W. PRESENT COURSES SHOW VARIATIONS DUE TO DIFFERENCES IN FIELD SURVEY, AND IRREGULAR MAGNETIC ATTRACTIONS.

SUSSEX

SPARTA  
JEFFERSON

MORRIS



LAKE

N. 12°-18'-10"E. 225.90'

N. 48°-18'-10"E. 427.20'

N. 71°-54'-10"E. 270.50'

N. 83°-07'-40"E. 522.60'

S. 270.65'

E. 1430.48'

N. 60°-20'-20"E. 328.19'

N. 70°-57'-20"E. 607.35'

N. 52°-43'-50"E. 344.22'

N. 30°-51'-50"E. 498.50'

N. 726.30'

E. 3299.19'

S. 70°-48'-10"E. 508.00'

S. 559.26'

E. 3299.19'

S. 76°-07'-10"E. 382.12'

S. 72°-26'-20"E. 126.15'

S. 54°-24'-20"E. 129.20'

S. 74°-24'-20"E. 176.00'

N. 71°-05'-20"E. 170.35'

S. 72°-53'-10"E. 305.80'

S. 18°-26'-10"E. 217.36'

N. 47°-34'E. 645.26'

N. 241.56'

E. 5023.63'

N. 47°-34'E. 645.26'

N. 241.56'

E. 5023.63'

N. 47°-34'E. 645.26'

N. 241.56'

E. 5023.63'

N. 47°-34'E. 645.26'

N. 241.56'

E. 5023.63'

S. 52°-24'E. 313.04'

S. 42°-05'W. 105.00'

S. 28°-18'E. 1135.00'

S. 25°-50'W. 1524.41'

N. 36°-10'E. 1135.00'

S. 1303.08'

W. 3085.20'

S. 28°-18'E. 1135.00'

S. 25°-50'W. 1524.41'

N. 36°-10'E. 1135.00'

S. 1303.08'

W. 3085.20'

S. 28°-18'E. 1135.00'

S. 25°-50'W. 1524.41'

N. 36°-10'E. 1135.00'

S. 1303.08'

W. 3085.20'

S. 28°-18'E. 1135.00'

S. 25°-50'W. 1524.41'

N. 36°-10'E. 1135.00'

S. 1303.08'

W. 3085.20'

S. 28°-18'E. 1135.00'

S. 25°-50'W. 1524.41'

N. 36°-10'E. 1135.00'

S. 1303.08'

W. 3085.20'

S. 28°-18'E. 1135.00'

S. 25°-50'W. 1524.41'

N. 36°-10'E. 1135.00'

S. 1303.08'

W. 3085.20'

S. 28°-18'E. 1135.00'

S. 25°-50'W. 1524.41'

N. 36°-10'E. 1135.00'

S. 1303.08'

W. 3085.20'

S. 28°-18'E. 1135.00'

S. 25°-50'W. 1524.41'

N. 36°-10'E. 1135.00'

S. 1303.08'

W. 3085.20'

S. 28°-18'E. 1135.00'

S. 25°-50'W. 1524.41'

N. 36°-10'E. 1135.00'

S. 1303.08'

W. 3085.20'

S. 28°-18'E. 1135.00'

S. 25°-50'W. 1524.41'

N. 36°-10'E. 1135.00'

S. 1303.08'

W. 3085.20'

S. 28°-18'E. 1135.00'

S. 25°-50'W. 1524.41'

N. 36°-10'E. 1135.00'

S. 1303.08'

W. 3085.20'

S. 28°-18'E. 1135.00'

S. 25°-50'W. 1524.41'

N. 36°-10'E. 1135.00'

S. 1303.08'

W. 3085.20'

S. 52°-24'E. 313.04'

S. 42°-05'W. 105.00'

S. 28°-18'E. 1135.00'

S. 25°-50'W. 1524.41'

N. 36°-10'E. 1135.00'

S. 1303.08'

W. 3085.20'

S. 28°-18'E. 1135.00'

S. 25°-50'W. 1524.41'

N. 36°-10'E. 1135.00'

S. 1303.08'

W. 3085.20'

S. 28°-18'E. 1135.00'

S. 25°-50'W. 1524.41'

N. 36°-10'E. 1135.00'

S. 1303.08'

W. 3085.20'

S. 28°-18'E. 1135.00'

S. 25°-50'W. 1524.41'

N. 36°-10'E. 1135.00'

S. 1303.08'

W. 3085.20'

S. 28°-18'E. 1135.00'

S. 25°-50'W. 1524.41'

N. 36°-10'E. 1135.00'

S. 1303.08'

W. 3085.20'

S. 28°-18'E. 1135.00'

S. 25°-50'W. 1524.41'

N. 36°-10'E. 1135.00'

S. 1303.08'

W. 3085.20'

S. 28°-18'E. 1135.00'

S. 25°-50'W. 1524.41'

N. 36°-10'E. 1135.00'

S. 1303.08'

W. 3085.20'

S. 28°-18'E. 1135.00'

S. 25°-50'W. 1524.41'

N. 36°-10'E. 1135.00'

S. 1303.08'

W. 3085.20'

S. 28°-18'E. 1135.00'

S. 25°-50'W. 1524.41'

N. 36°-10'E. 1135.00'

S. 1303.08'

W. 3085.20'

S. 28°-18'E. 1135.00'

S. 25°-50'W. 1524.41'

N. 36°-10'E. 1135.00'

S. 1303.08'

W. 3085.20'

S. 28°-18'E. 1135.00'

S. 25°-50'W. 1524.41'

N. 36°-10'E. 1135.00'

S. 1303.08'

W. 3085.20'

S. 28°-18'E. 1135.00'

S. 25°-50'W. 1524.41'

N. 36°-10'E. 1135.00'

S. 1303.08'

W. 3085.20'

S. 52°-24'E. 313.04'

S. 42°-05'W. 105.00'

S. 28°-18'E. 1135.00'

S. 25°-50'W. 1524.41'

N. 36°-10'E. 1135.00'

S. 1303.08'

W. 3085.20'

S. 28°-18'E. 1135.00'

S. 25°-50'W. 1524.41'

N. 36°-10'E. 1135.00'

S. 1303.08'

W. 3085.20'

S. 28°-18'E. 1135.00'

S. 25°-50'W. 1524.41'

N. 36°-10'E. 1135.00'

S. 1303.08'

W. 3085.20'

S. 28°-18'E. 1135.00'

S. 25°-50'W. 1524.41'

N. 36°-10'E. 1135.00'

S. 1303.08'

W. 3085.20'

S. 28°-18'E. 1135.00'

S. 25°-50'W. 1524.41'

N. 36°-10'E. 1135.00'

S. 1303.08'

W. 3085.20'

S. 28°-18'E. 1135.00'

S. 25°-50'W. 1524.41'

N. 36°-10'E. 1135.00'

S. 1303.08'

W. 3085.20'

S. 28°-18'E. 1135.00'

S. 25°-50'W. 1524.41'

N. 36°-10'E. 1135.00'

S. 1303.08'

W. 3085.20'

S. 28°-18'E. 1135.00'

S. 25°-50'W. 1524.41'

N. 36°-10'E. 1135.00'

S. 1303.08'

W. 3085.20'

S. 28°-18'E. 1135.00'

S. 25°-50'W. 1524.41'

N. 36°-10'E. 1135.00'

S. 1303.08'

W. 3085.20'

S. 28°-18'E. 1135.00'

S. 25°-50'W. 1524.41'

N. 36°-10'E. 1135.00'

S. 1303.08'

W. 3085.20'

S. 28°-18'E. 1135.00'

S. 25°-50'W. 1524.41'

N. 36°-10'E. 1135.00'

S. 1303.08'

W. 3085.20'

S. 28°-18'E. 1135.00'

S. 25°-50'W. 1524.41'

N. 36°-10'E. 1135.00'

S. 1303.08'

W. 3085.20'

S. 52°-24'E. 313.04'

S. 42°-05'W. 105.00'

S. 28°-18'E. 1135.00'

S. 25°-50'W. 1524.41'

N. 36°-10'E. 1135.00'

S. 1303.08'

W. 3085.20'

S. 28°-18'E. 1135.00'

S. 25°-50'W. 1524.41'

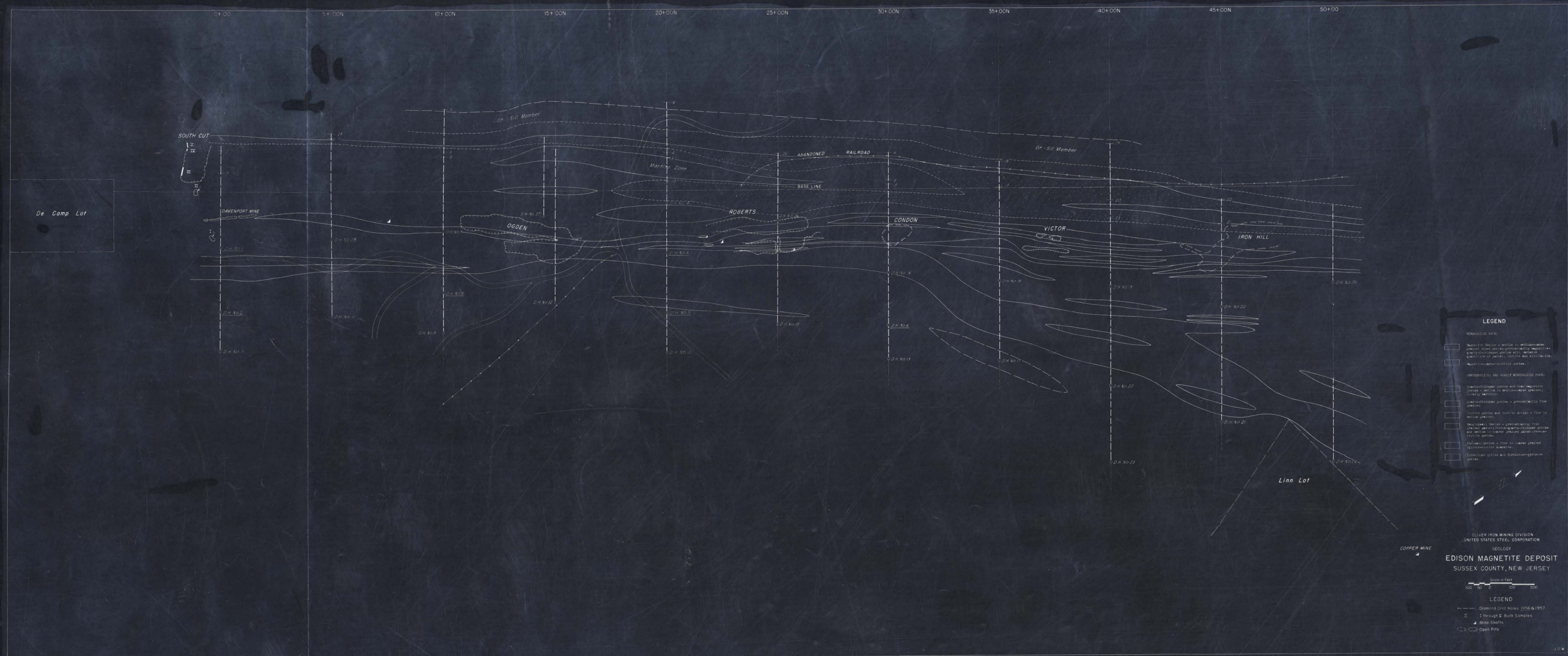
N. 36°-10'E. 1135.00'

S. 1303.08'

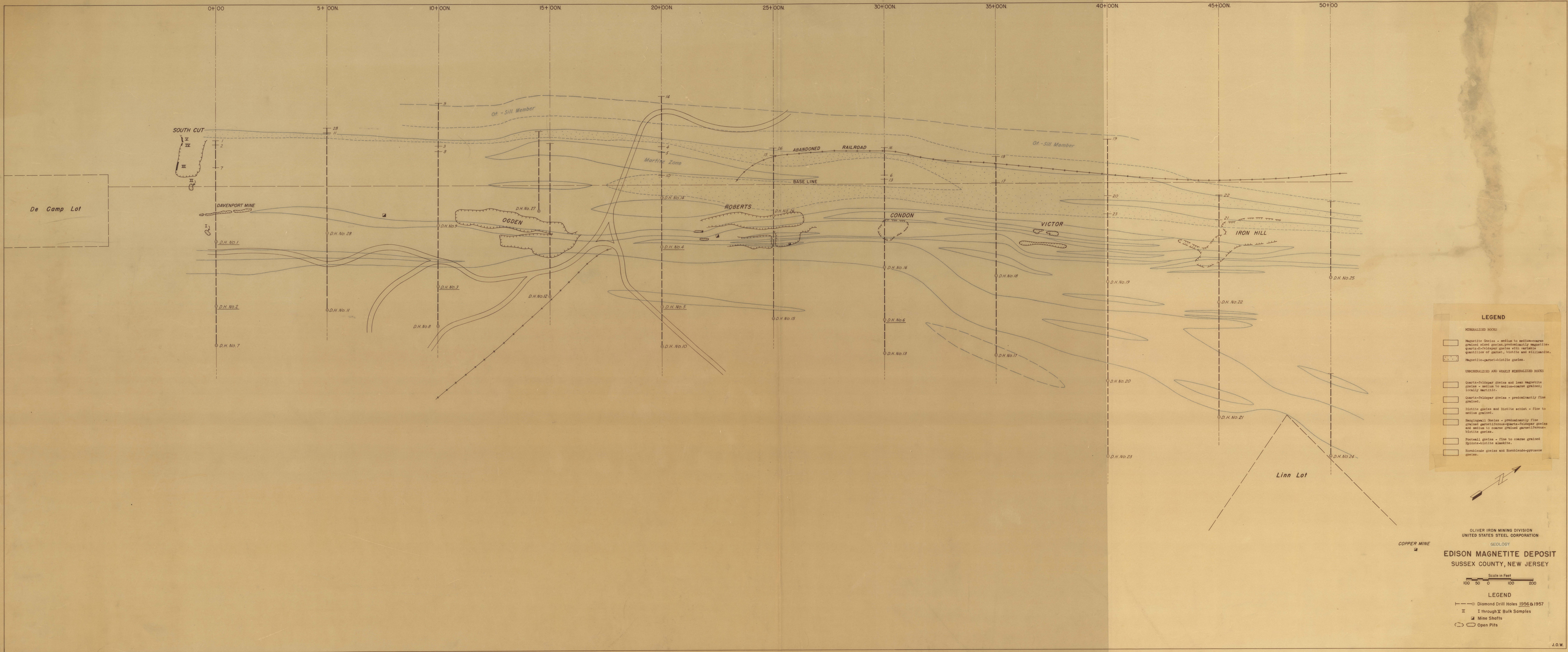




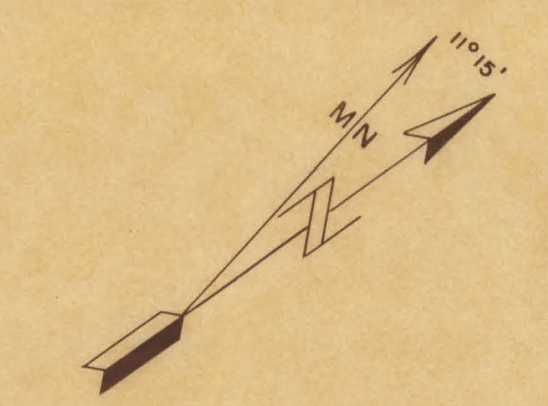
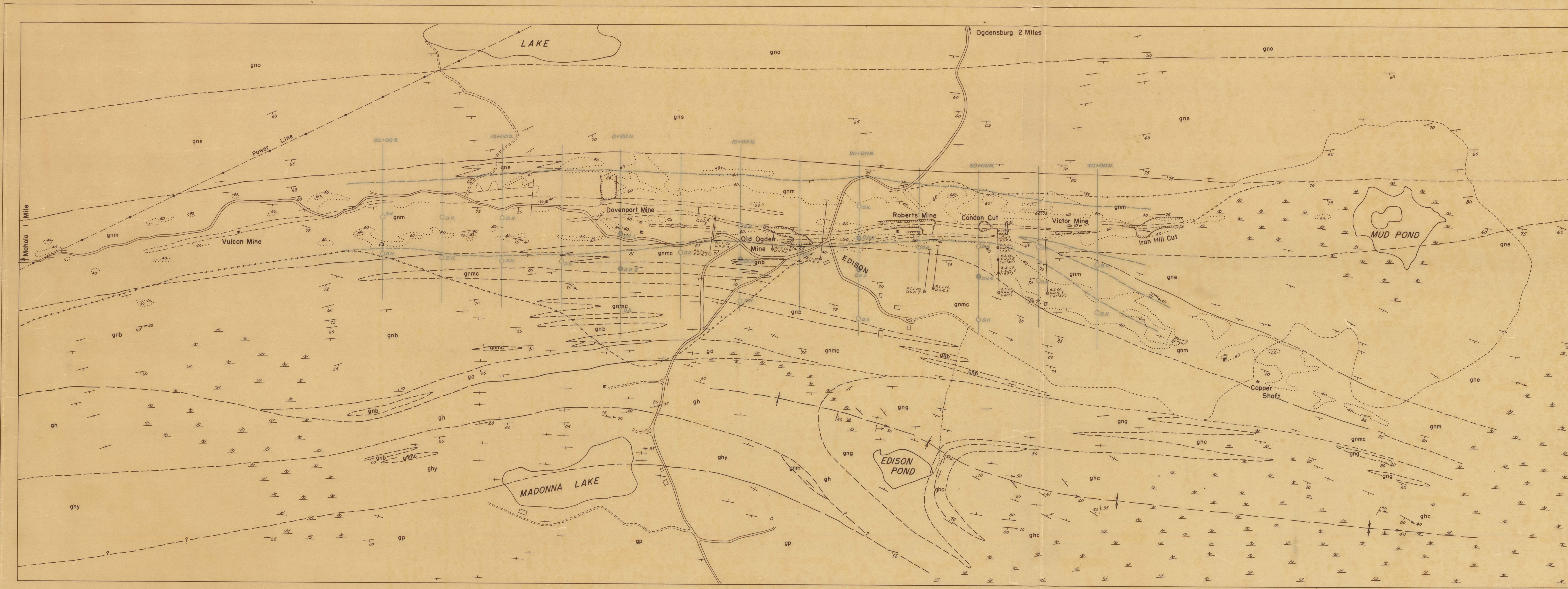












OLIVER IRON MINING DIVISION  
UNITED STATES STEEL CORPORATION  
MAP OF  
**GEOLOGIC AREA OF THE EDISON MAGNETITE DEPOSITS**  
SUSSEX COUNTY, NEW JERSEY

SCALE OF FEET  
300 150 0 300 600 900

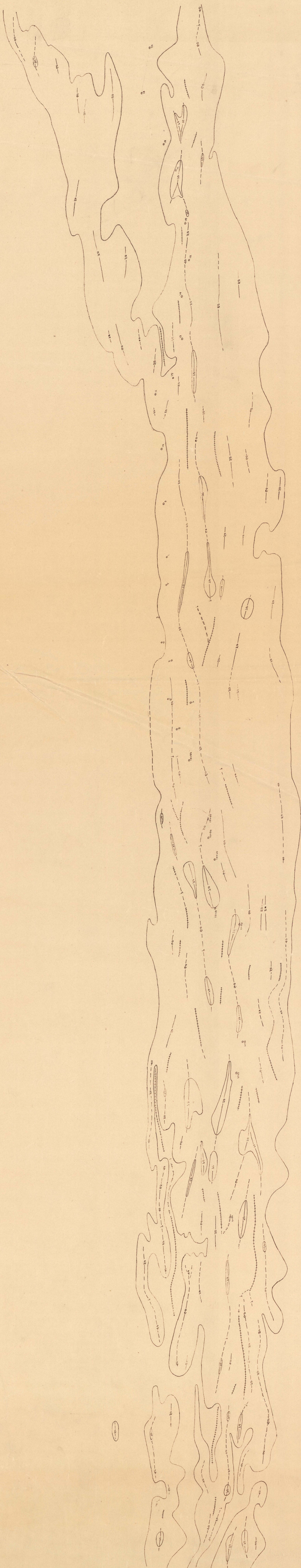
**GEOLOGY**

- PRE CAMBRIAN
- IGNEOUS ROCKS
  - ghy Hypersthene Granite
  - gp Pyroxene Granite
  - ga Biotite Alaskite
  - gh Hornblende Granite
  - ghc Contaminated Hornblende Granite
  - gns Pyroxene Syenite Gneiss
- METASEDIMENTARY, METASOMATIC & MIXED GNEISSES
  - gne Epidote-Scapolite-Quartz Gneiss and related Facies
  - gnc Mixed Gneisses with Magnetite Concentrations
  - gnmc Quartz-Microcline Gneiss
  - gnb Garnetiferous Biotite-Quartz-Feldspar Gneiss
  - gng Garnet-Biotite-Quartz Feldspar Gneiss & related Facies
- GNEISSES OF UNCERTAIN ORIGIN
  - gno Quartz Oligoclase Gneiss

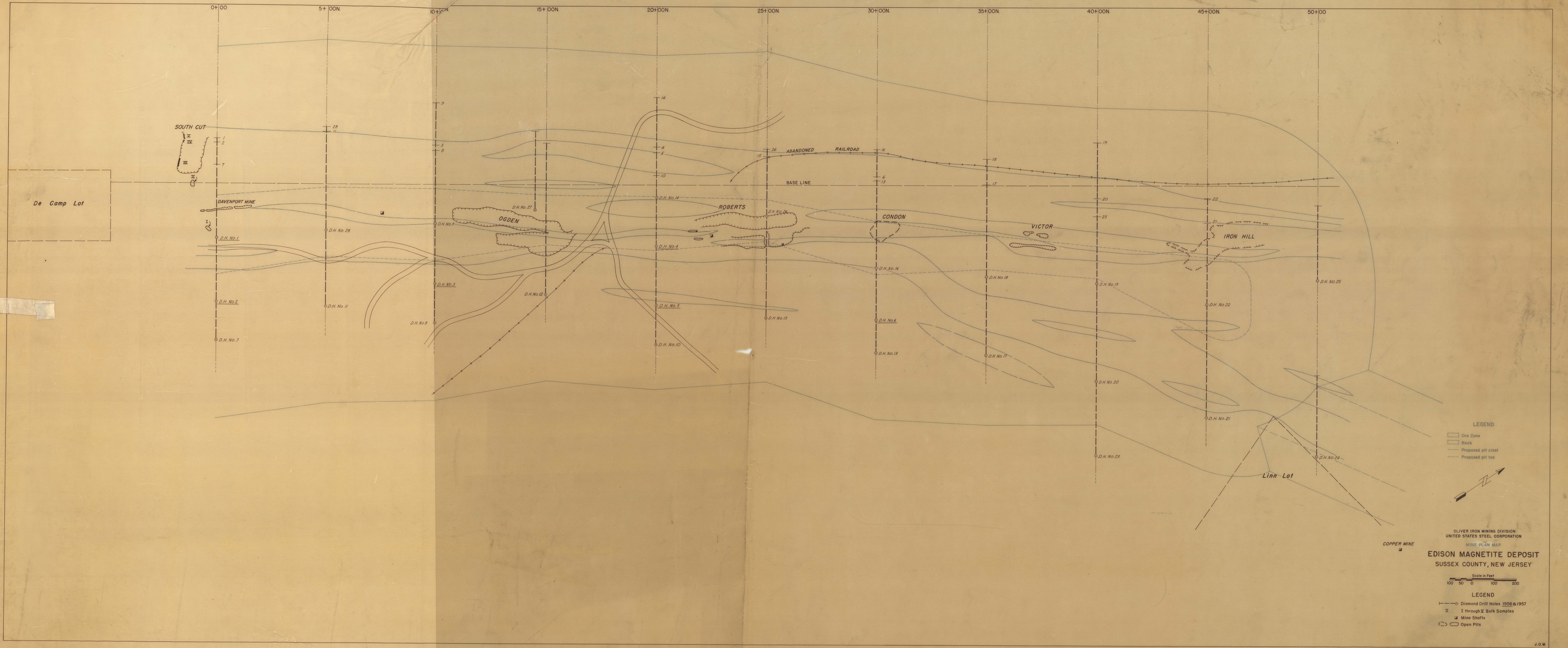
**MAP SYMBOLS**

- Contact dashed where approximately located
- Probable fault
- Syncline, showing plunge of axis
- Strike and dip of foliation
- Strike of vertical foliation
- Bearing & plunge of lineation
- Strike & Dip of foliation & plunge of lineation
- Magnetite deposits, solid line indicated ore
- Dashed line inferred ore
- Magnetic contour dip needle survey
- Mine shaft
- Open cut or prospect pit
- Diamond drill hole
- Trail
- Roads
- B.S. CO. Bethlehem Steel Co. 1920
- P.C.I. CO. Pittsburgh Coke & Iron Co. 1943
- O.I.M. Oliver Iron Mining Division Drill Holes 1956
- P.D.M. Proposed diamond drilling 1957
- Mineralized Belt









LEGEND

- Ore Zone
- Rock
- Proposed pit crest
- Proposed pit toe

Scale in Feet

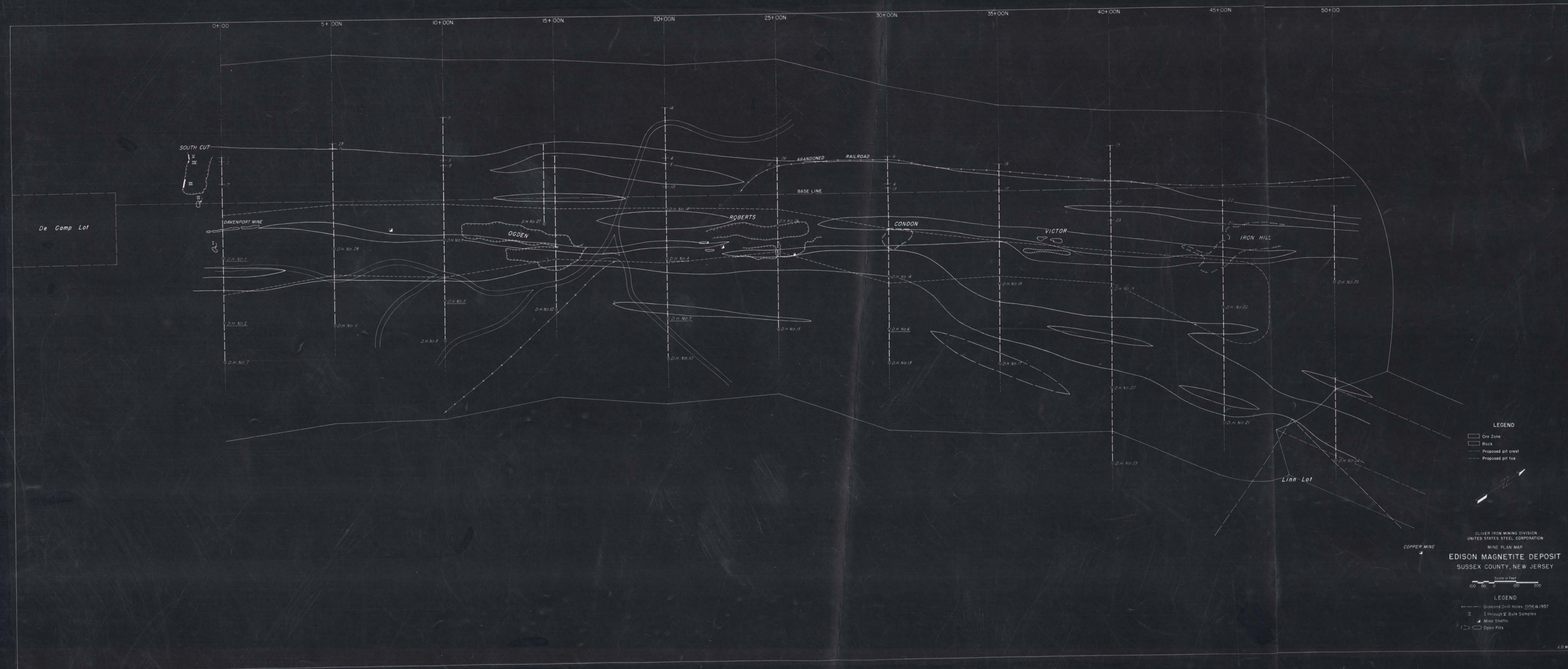
100 50 0 100 200

LEGEND

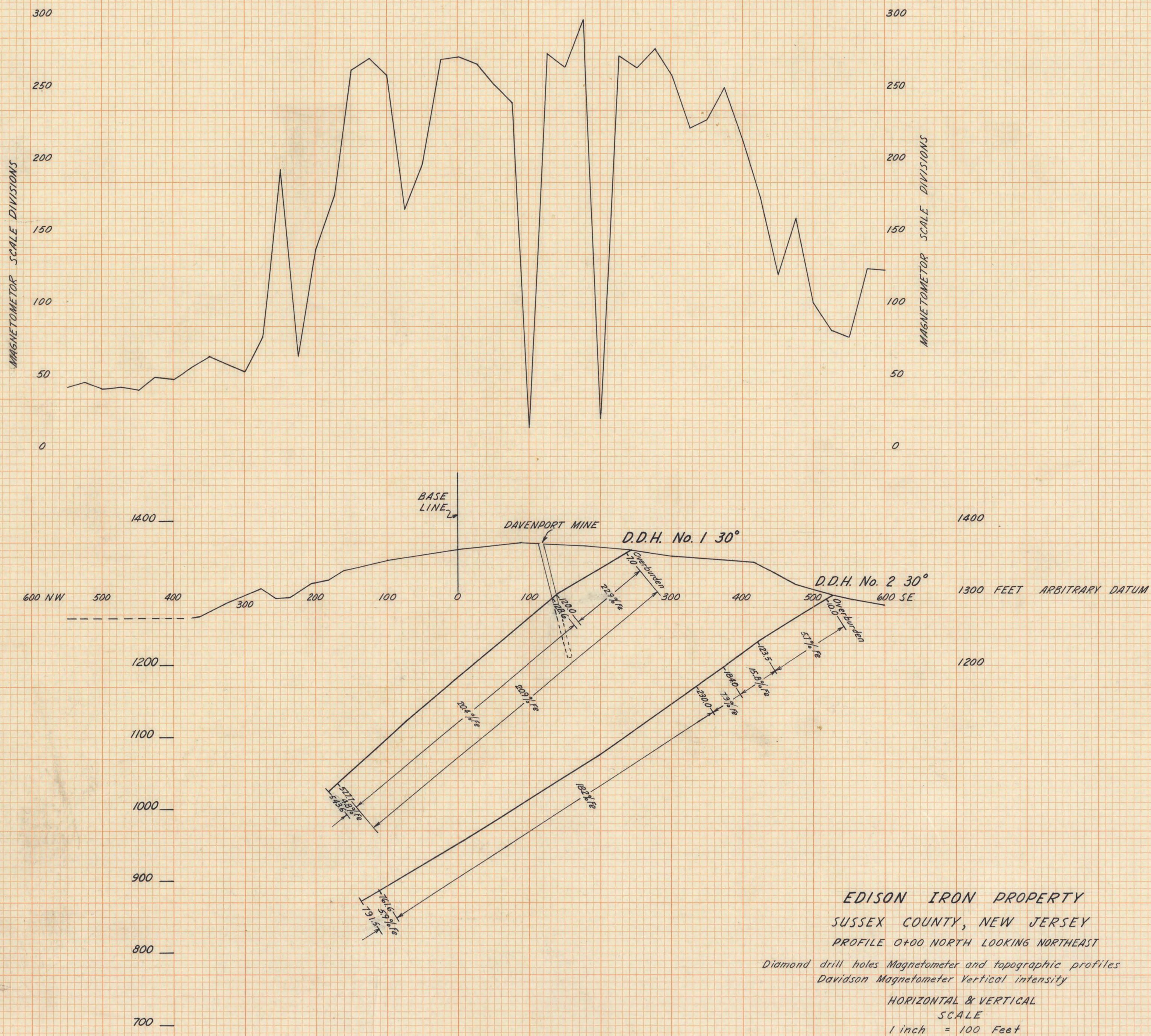
- Diamond Drill Holes 1956 & 1957
- I through 12 Bulk Samples
- Mine Shafts
- Open Pits

OLIVER IRON MINING DIVISION  
UNITED STATES STEEL CORPORATION  
MINE PLAN MAP  
EDISON MAGNETITE DEPOSIT  
SUSSEX COUNTY, NEW JERSEY

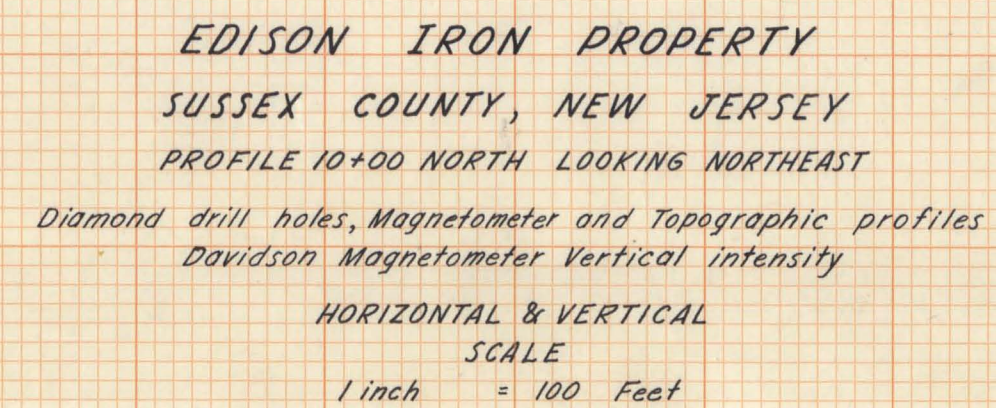




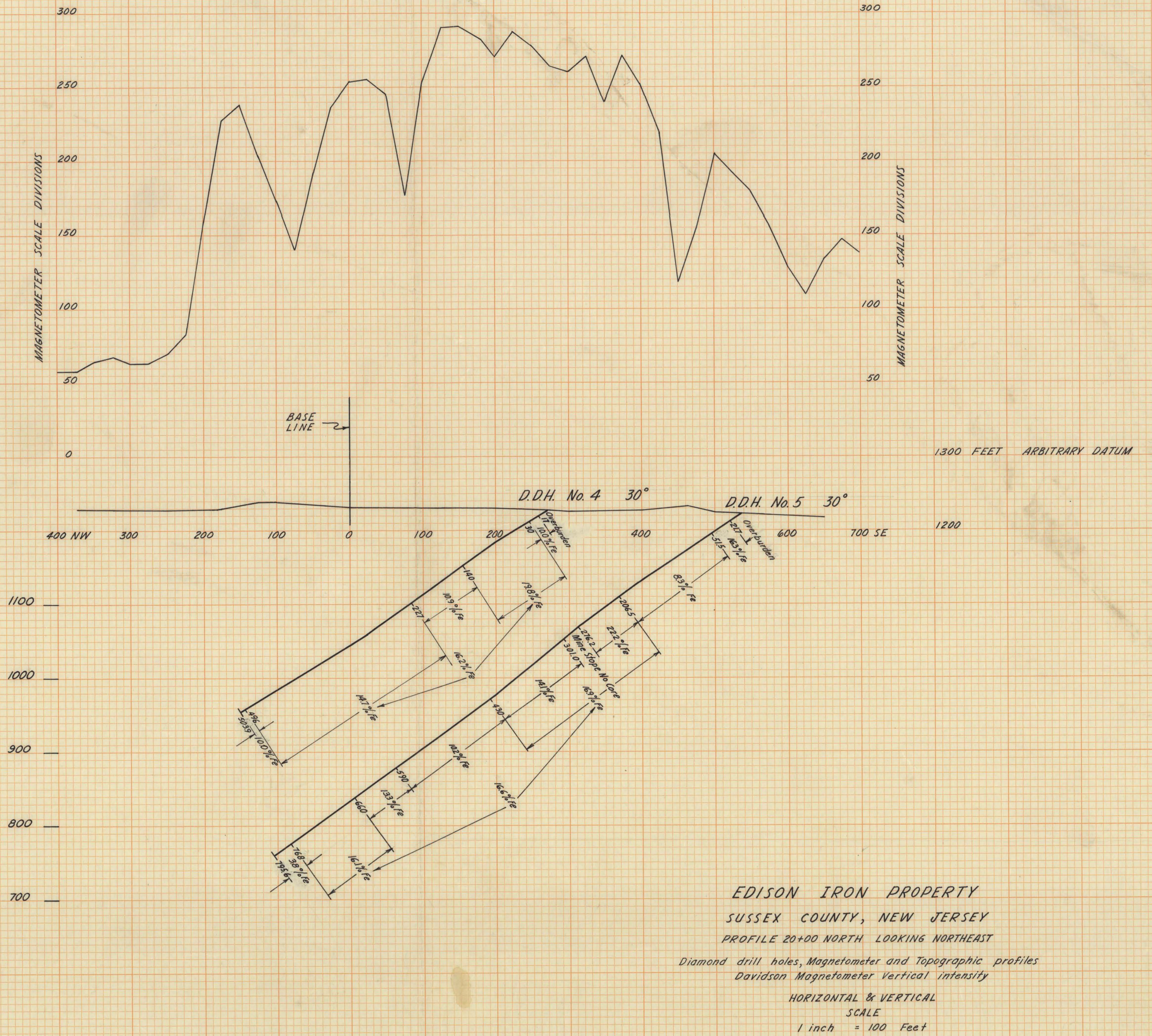




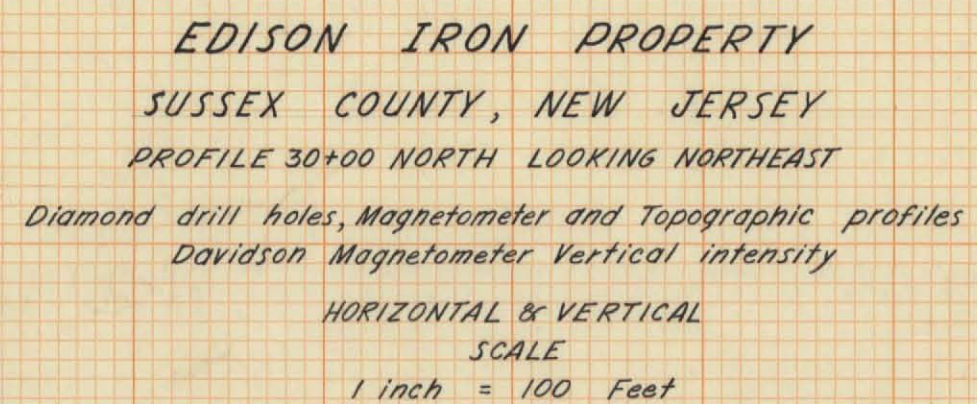












OLIVER IRON MINING  
DIVISION  
U. S. STEEL CORP.  
Date..... 2/20/59  
File No..... 52-78-4  
Case No..... Unit 5  
Drawer No..... A1-4



