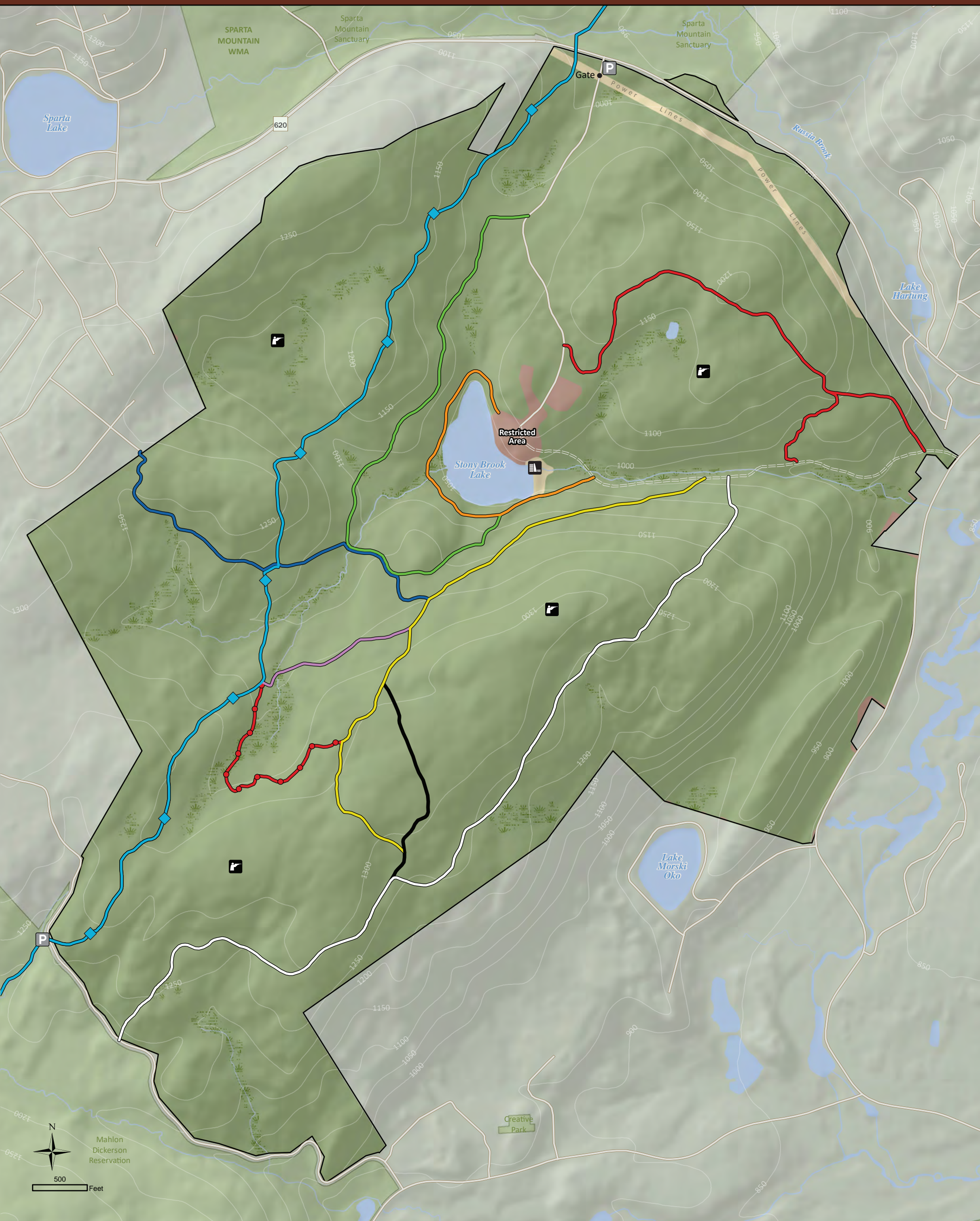


MT PAUL at Kittatinny Valley SP



- | | | | |
|---------------------|------------------------|---------------------------|--------------------|
| Open Field or Grass | Blue Trail (.75 mi) | Red Trail (.5 mi) | Dam |
| Forest | Charcoal Trail (.4 mi) | Split Rock Trail (1.2 mi) | Hunting |
| Developed Area | Green Trail (1.3 mi) | Purple Trail (.3 mi) | Parking (Pull Off) |
| Water | Highlands Trail (2 mi) | White Trail (1.7 mi) | |
| Wetland | Lake Trail (.65 mi) | Yellow Trail (1.1 mi) | |