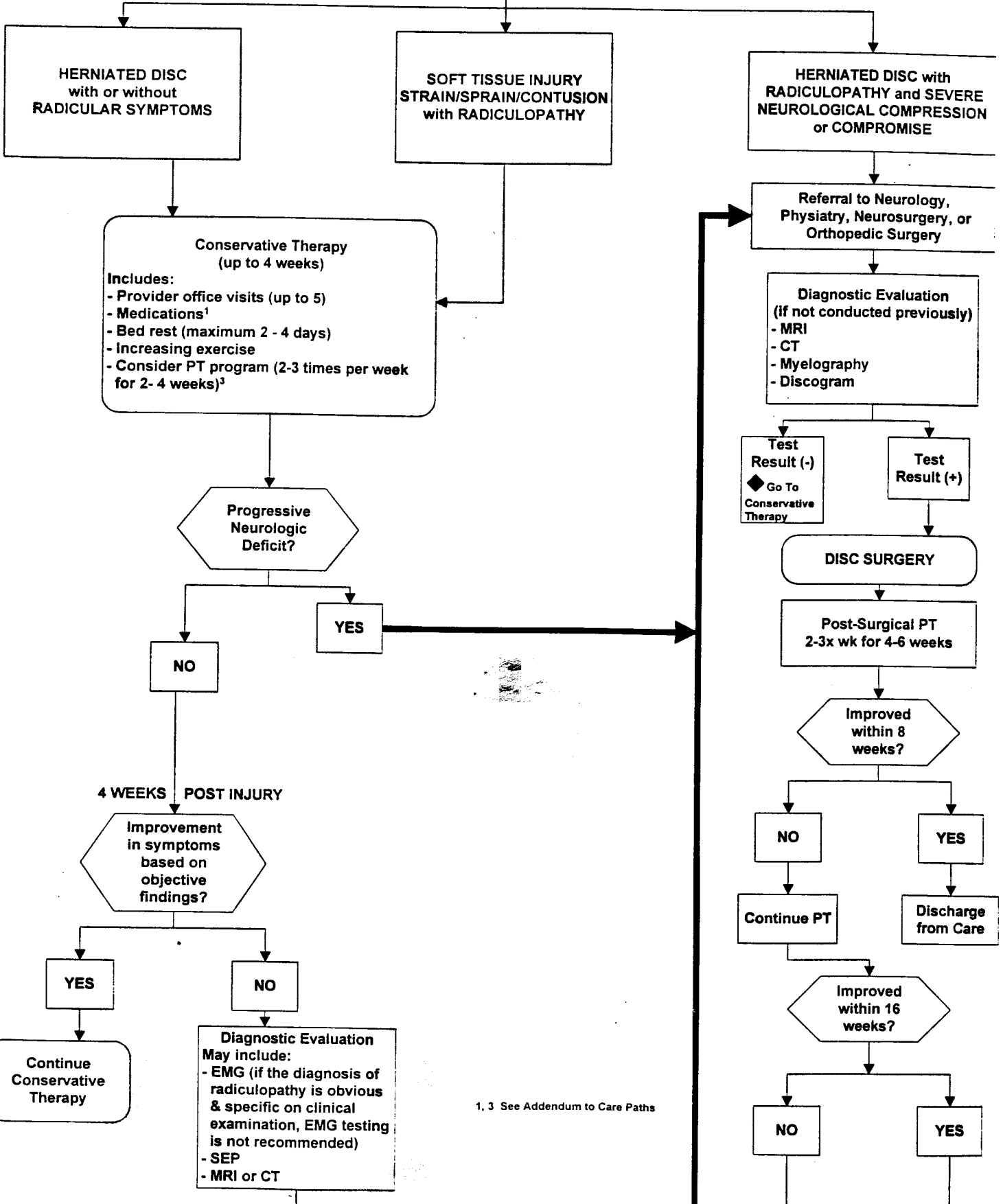
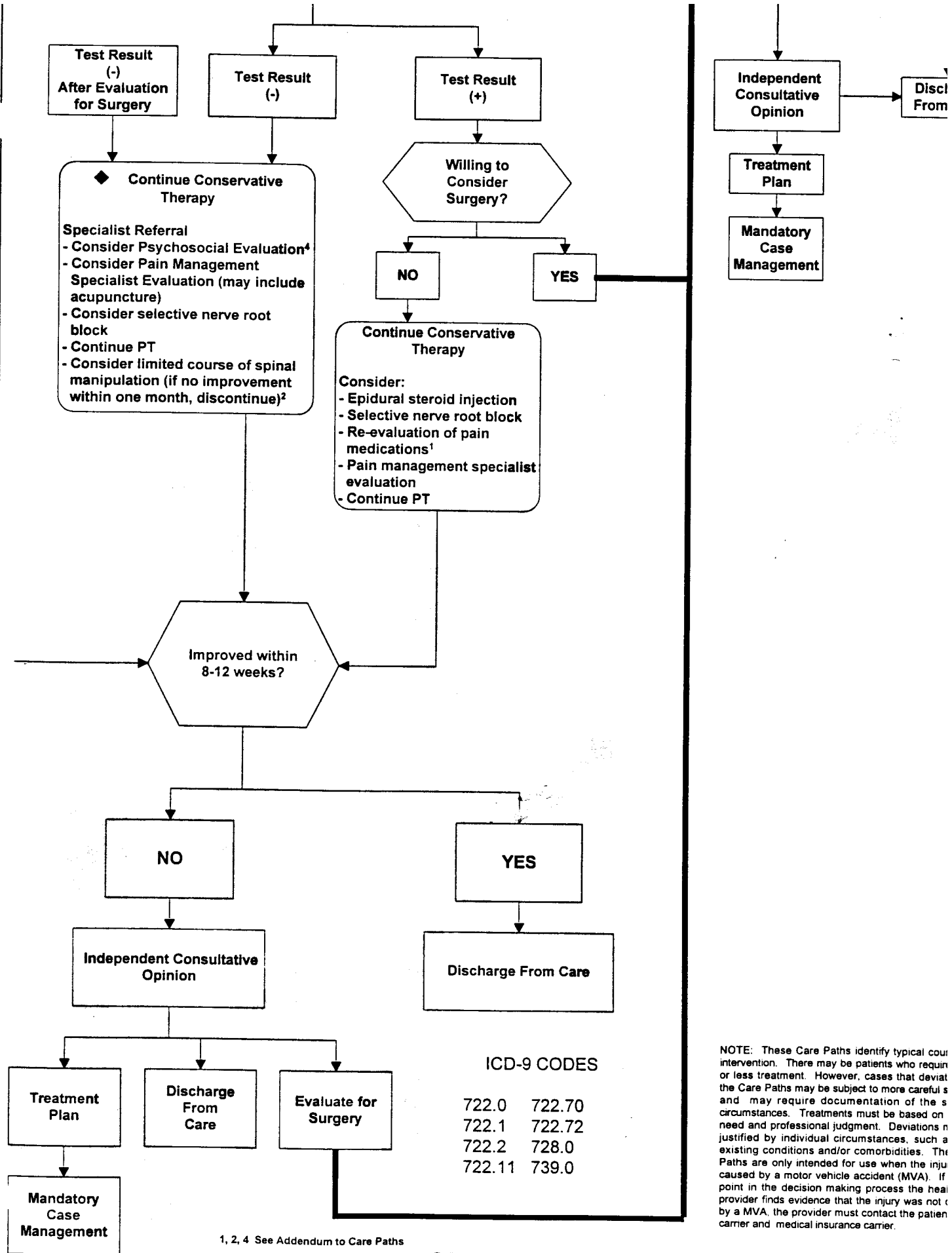


# CARE PATH 4

## THORACIC SPINE (UPPER BACK INJURY) HERNIATED DISC/RADICULOPATHY



1, 3 See Addendum to Care Paths



**ICD-9 CODES**

- 722.0    722.70
- 722.1    722.72
- 722.2    728.0
- 722.11   739.0

NOTE: These Care Paths identify typical court intervention. There may be patients who require more or less treatment. However, cases that deviate from the Care Paths may be subject to more careful review and may require documentation of the specific circumstances. Treatments must be based on patient need and professional judgment. Deviations are justified by individual circumstances, such as pre-existing conditions and/or comorbidities. The Care Paths are only intended for use when the injury is caused by a motor vehicle accident (MVA). If at any point in the decision making process the health care provider finds evidence that the injury was not caused by a MVA, the provider must contact the patient and the medical insurance carrier.

1, 2, 4 See Addendum to Care Paths

**CARE PATH 4**