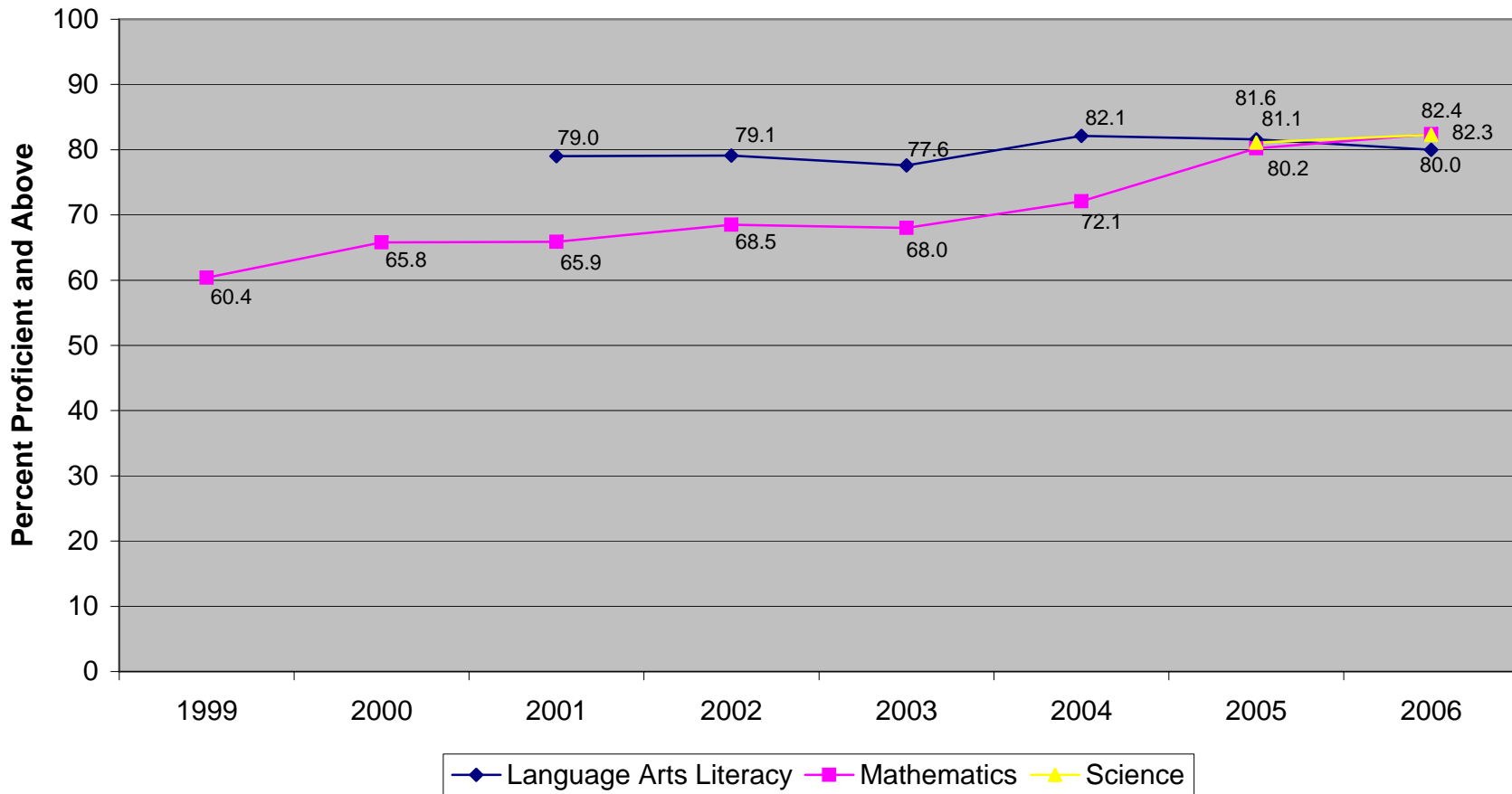
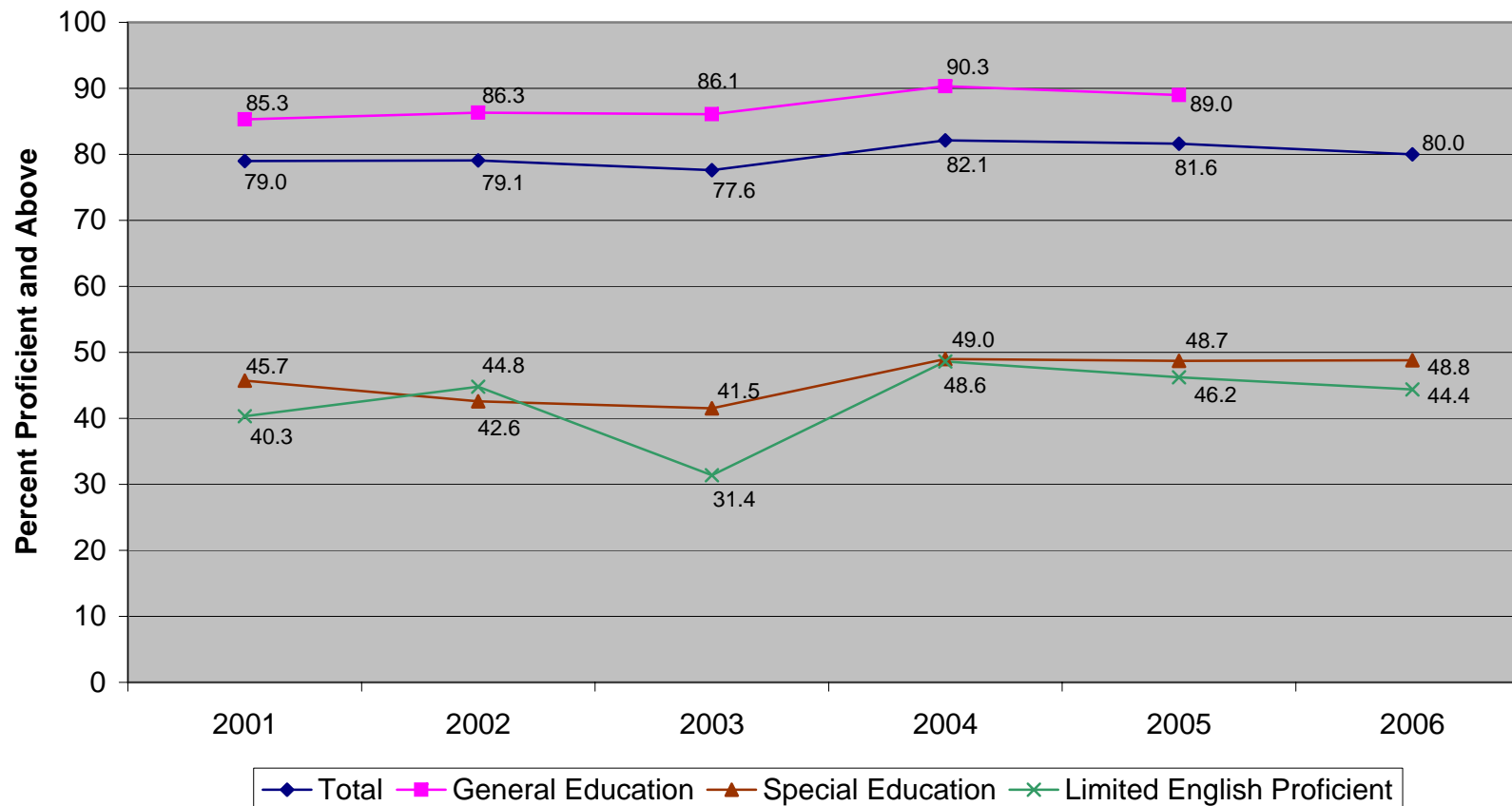


**New Jersey Assessment of Fourth Grade Students  
Percent Proficient and Above by Content Areas (1999-2006)<sup>1</sup>**



<sup>1</sup>Elementary School Proficiency Assessment (ESPA), 1999-2002; New Jersey Assessment of Skills and Knowledge (NJ ASK4), 2003-2006. For Language Arts Literacy, 2001 was the standard setting year for the ESPA and NJ ASK4. For Mathematics, 1999 was the standard setting year for the ESPA and NJ ASK4.

**New Jersey Assessment of Fourth Grade Students  
Language Arts Literacy Percent Proficient and Above by Subgroups (2001-2006)<sup>1,2,3</sup>**



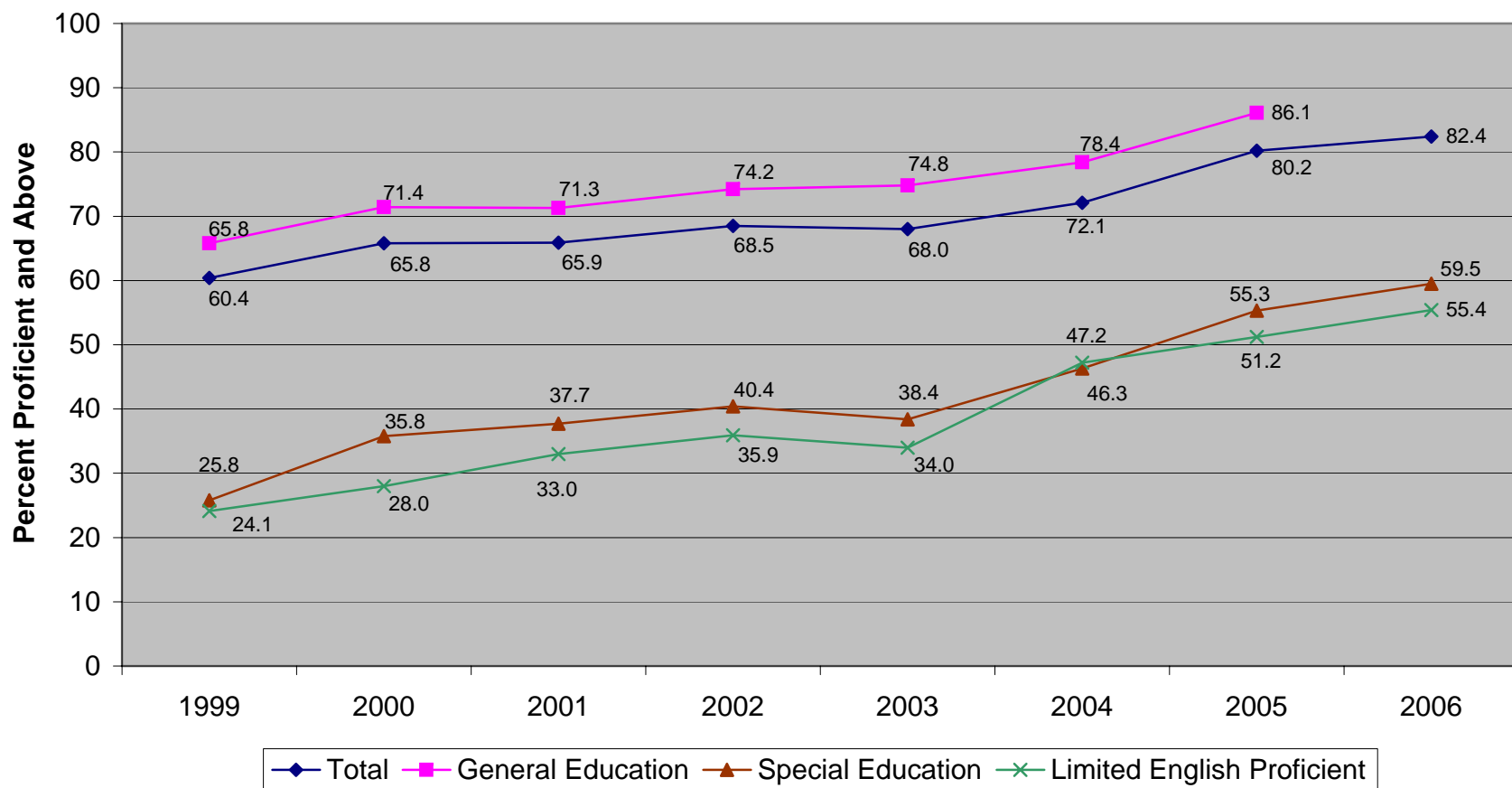
<sup>1</sup>Elementary School Proficiency Assessment (ESPA), 2001-2002; New Jersey Assessment of Skills and Knowledge (NJ ASK4), 2003-2006. For Language Arts Literacy, 2001 was the standard setting year for the ESPA and NJ ASK4.

<sup>2</sup>For 2006, General Education is not reported in the state summary.

<sup>3</sup>For 2006, LEP is reported in three categories: LEP (current + former), LEP current and LEP former.



### New Jersey Assessment of Fourth Grade Students Mathematics Percent Proficient and Above by Subgroups (1999-2006)<sup>1,2,3</sup>



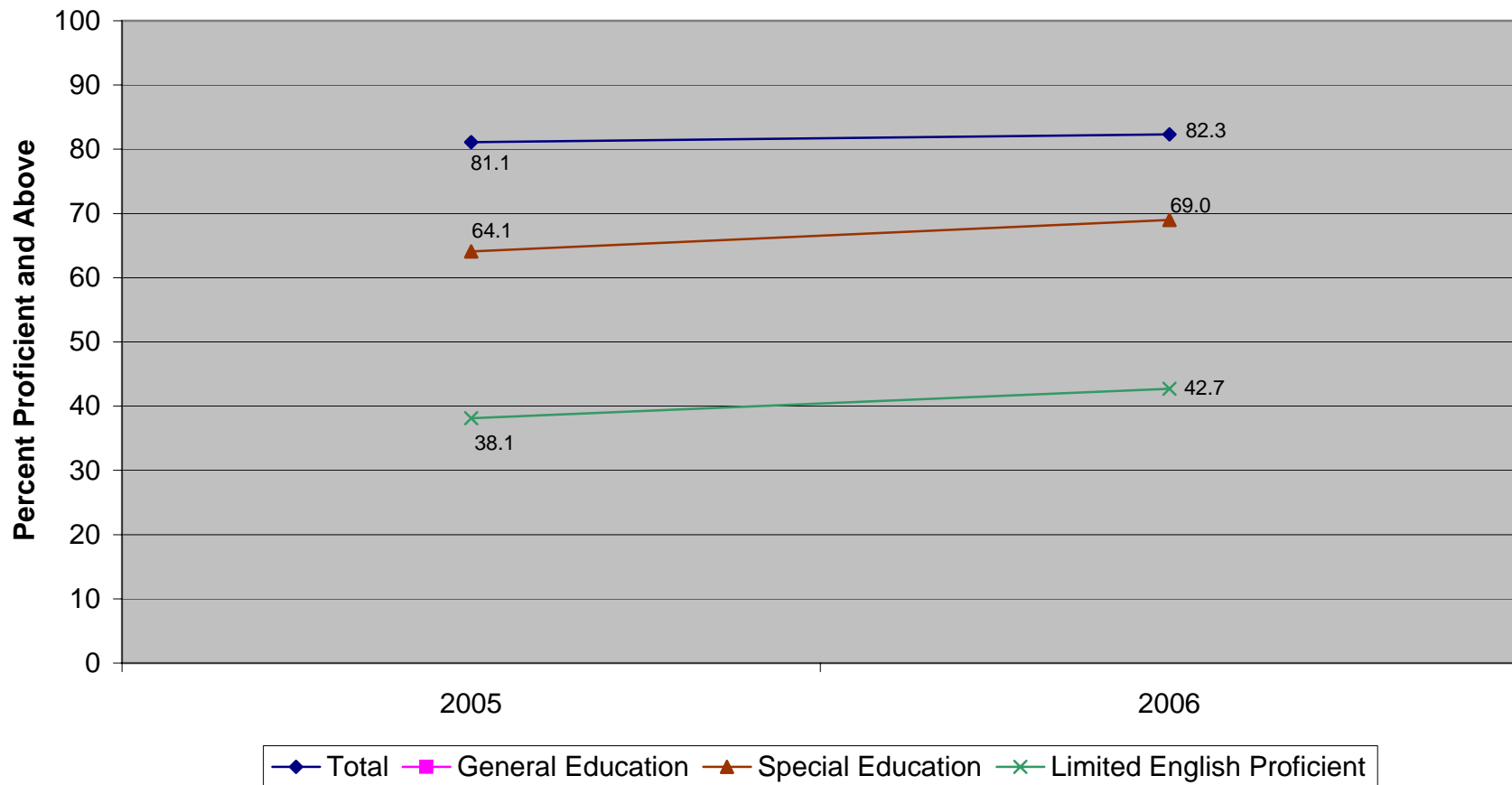
<sup>1</sup>Elementary School Proficiency Assessment (ESPA), 1999-2002; New Jersey Assessment of Skills and Knowledge (NJ ASK4), 2003-2006. For Mathematics, 1999 was the standard setting year for the ESPA and NJ ASK4.

<sup>2</sup>For 2006, General Education is not reported in the state summary.

<sup>3</sup>For 2006, LEP is reported in three categories: LEP (current + former), LEP current and LEP former.



**New Jersey Assessment of Fourth Grade Students  
Science Percent Proficient and Above by Subgroups (2005-2006)<sup>1,2,3</sup>**



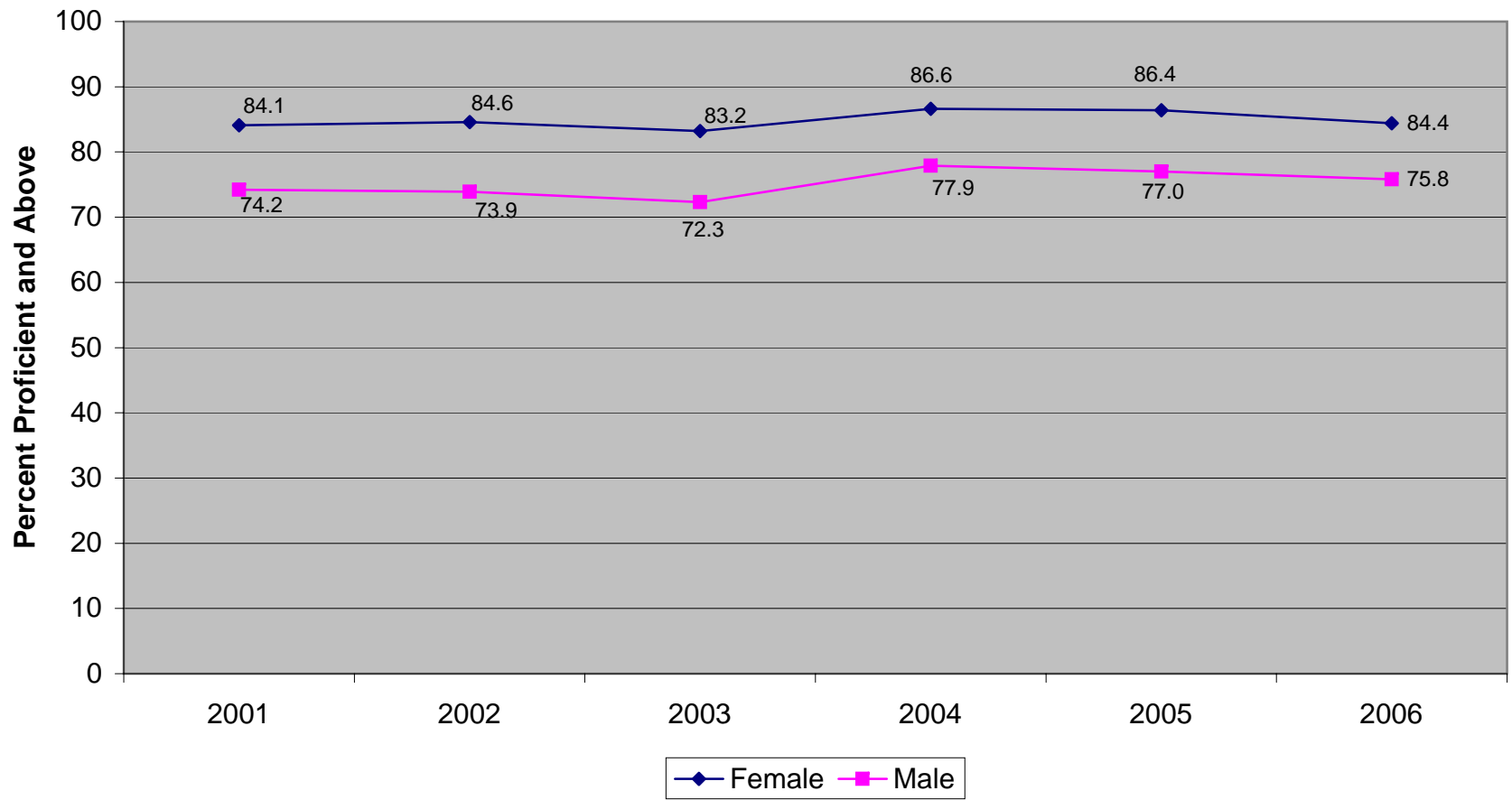
<sup>1</sup>New Jersey Assessment of Skills and Knowledge (NJ ASK4), 2005-2006. For Science, 2005 was the standard setting year for the NJ ASK4.

<sup>2</sup>For 2006, General Education is not reported in the state summary.

<sup>3</sup>For 2006, LEP is reported in three categories: LEP (current + former), LEP current and LEP former.



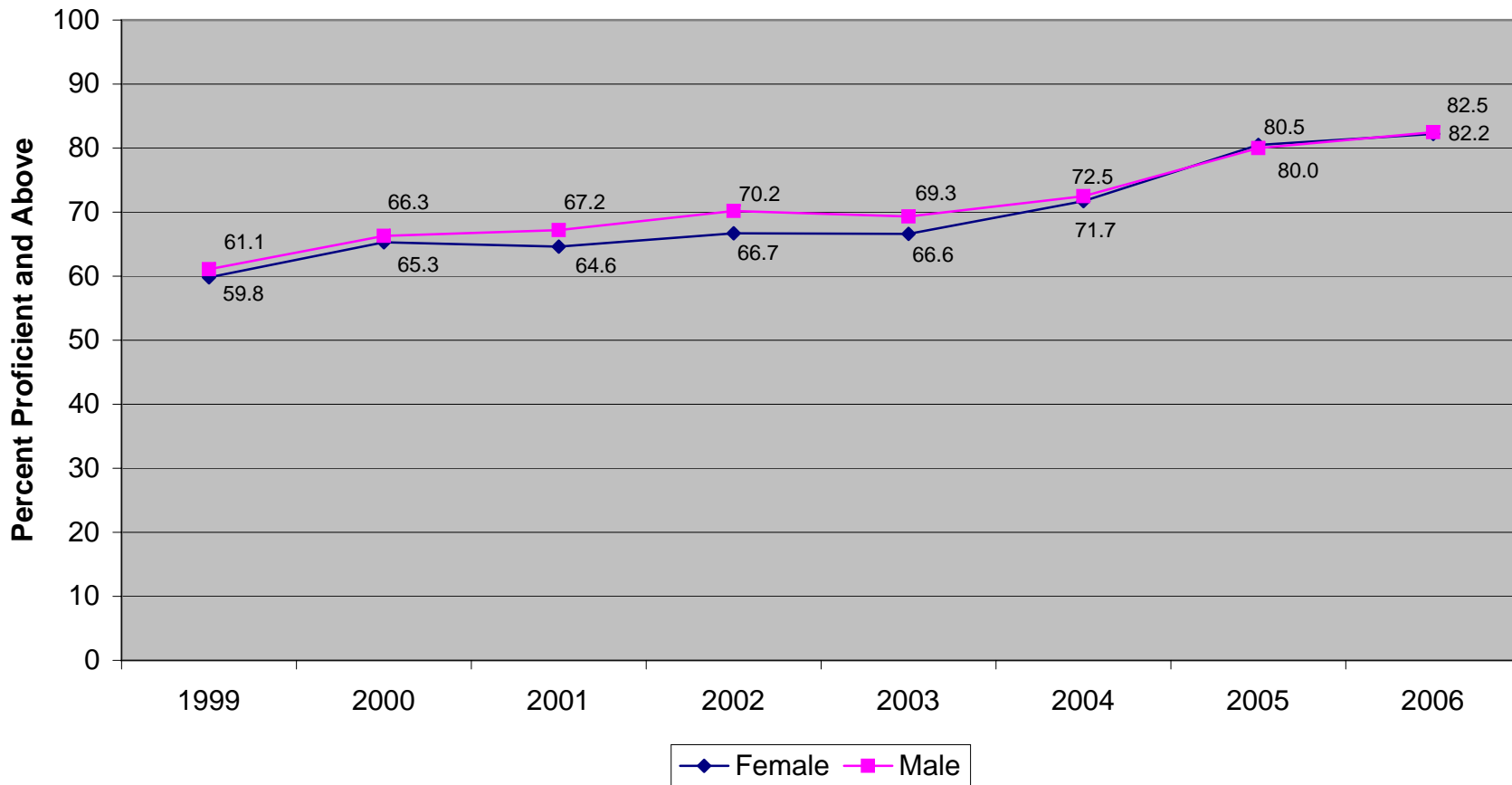
**New Jersey Assessment of Fourth Grade Students  
Language Arts Literacy Percent Proficient and Above by Gender (2001-2006)<sup>1</sup>**



<sup>1</sup>Elementary School Proficiency Assessment (ESPA), 2001-2002; New Jersey Assessment of Skills and Knowledge (NJ ASK4), 2003-2006. For Language Arts Literacy, 2001 was the standard setting year for the ESPA and NJ ASK4.

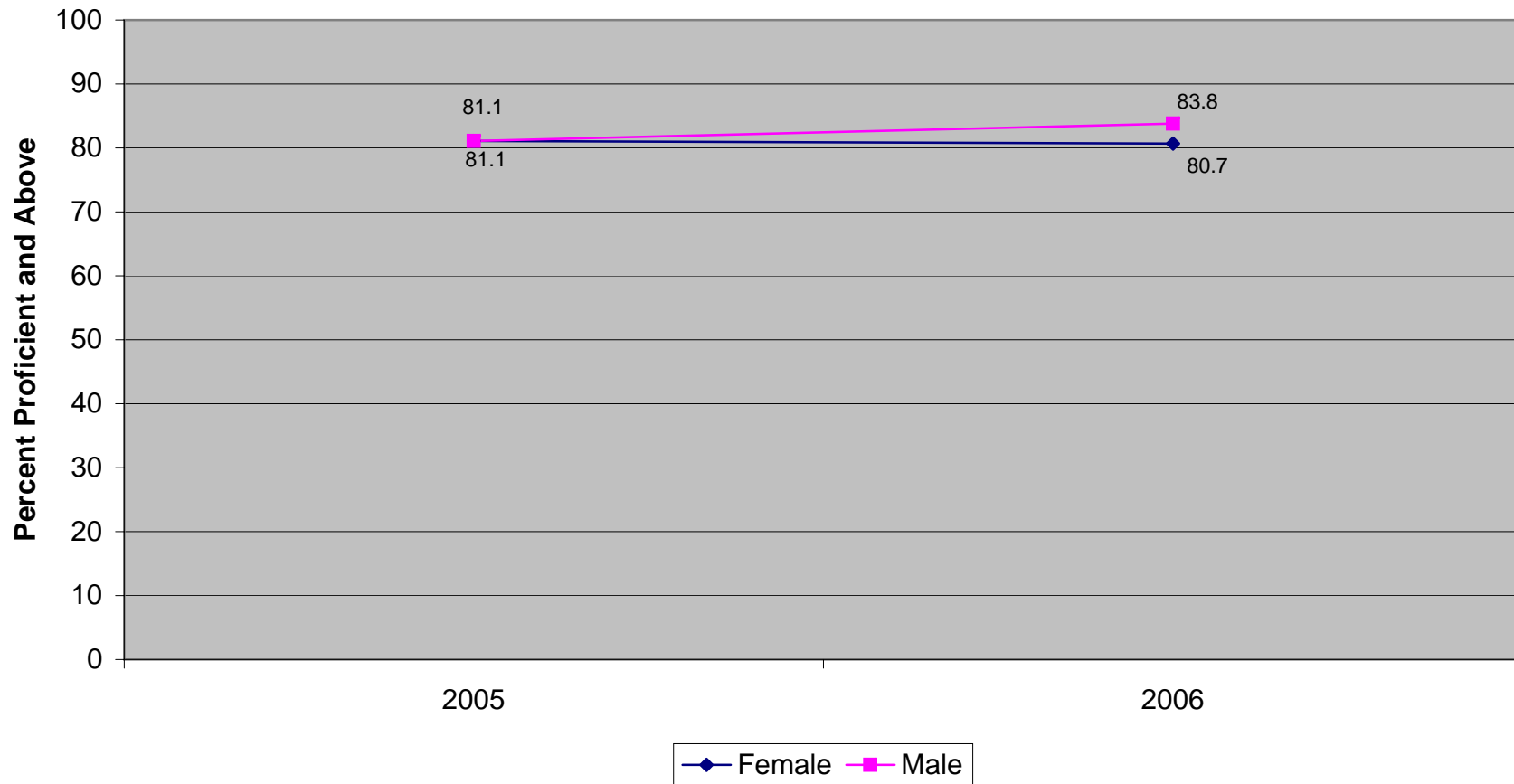


### New Jersey Assessment of Fourth Grade Students Mathematics Percent Proficient and Above by Gender (1999-2006)<sup>1</sup>



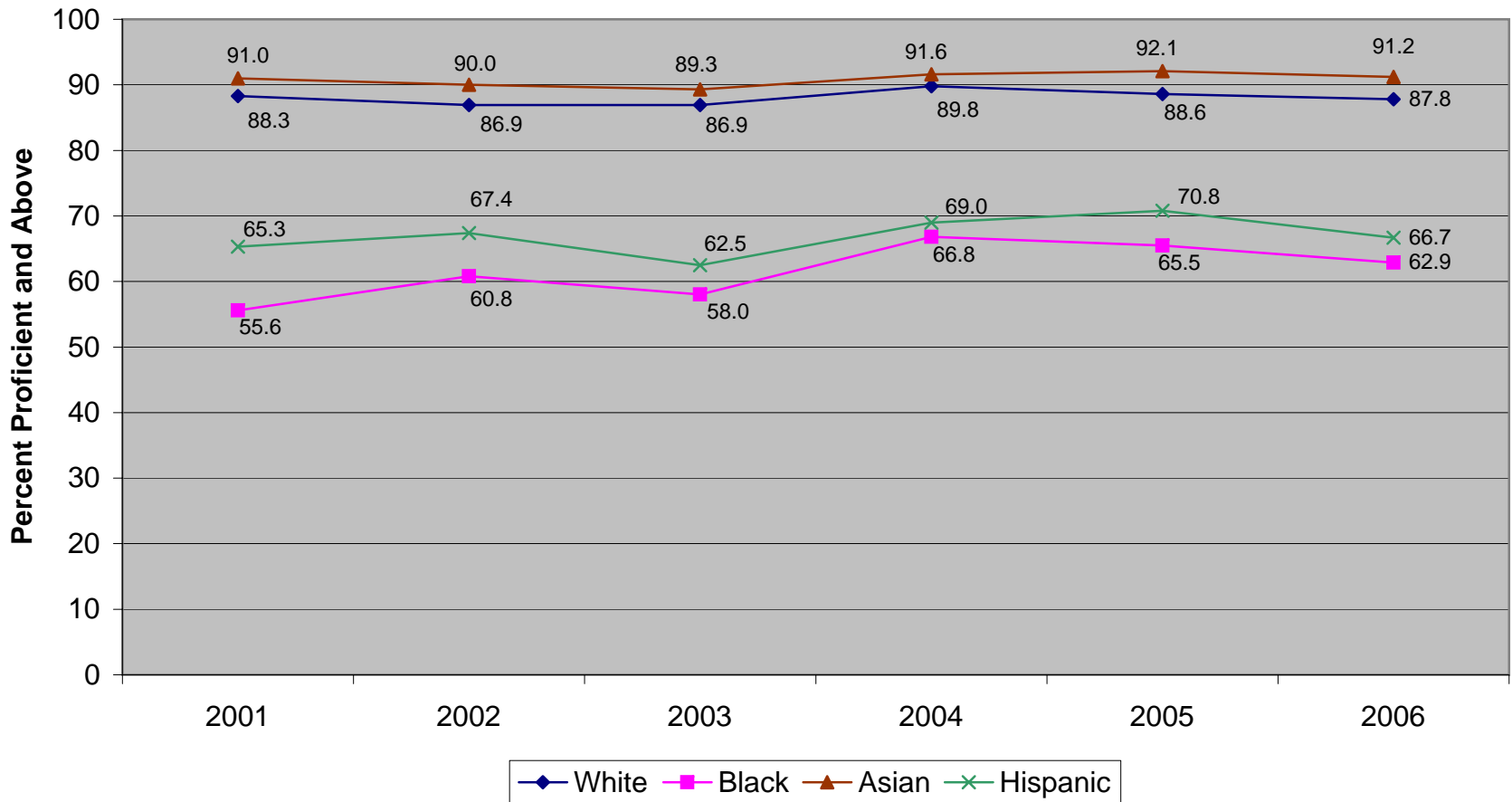
<sup>1</sup>Elementary School Proficiency Assessment (ESPA), 1999-2002; New Jersey Assessment of Skills and Knowledge (NJ ASK4), 2003-2006. For Mathematics, 1999 was the standard setting year for the ESPA and NJ ASK4.

**New Jersey Assessment of Fourth Grade Students  
Science Percent Proficient and Above by Gender (2005-2006)<sup>1</sup>**



<sup>1</sup>New Jersey Assessment of Skills and Knowledge (NJ ASK4), 2005-2006. For Science, 2005 was the standard setting year for the NJ ASK4.

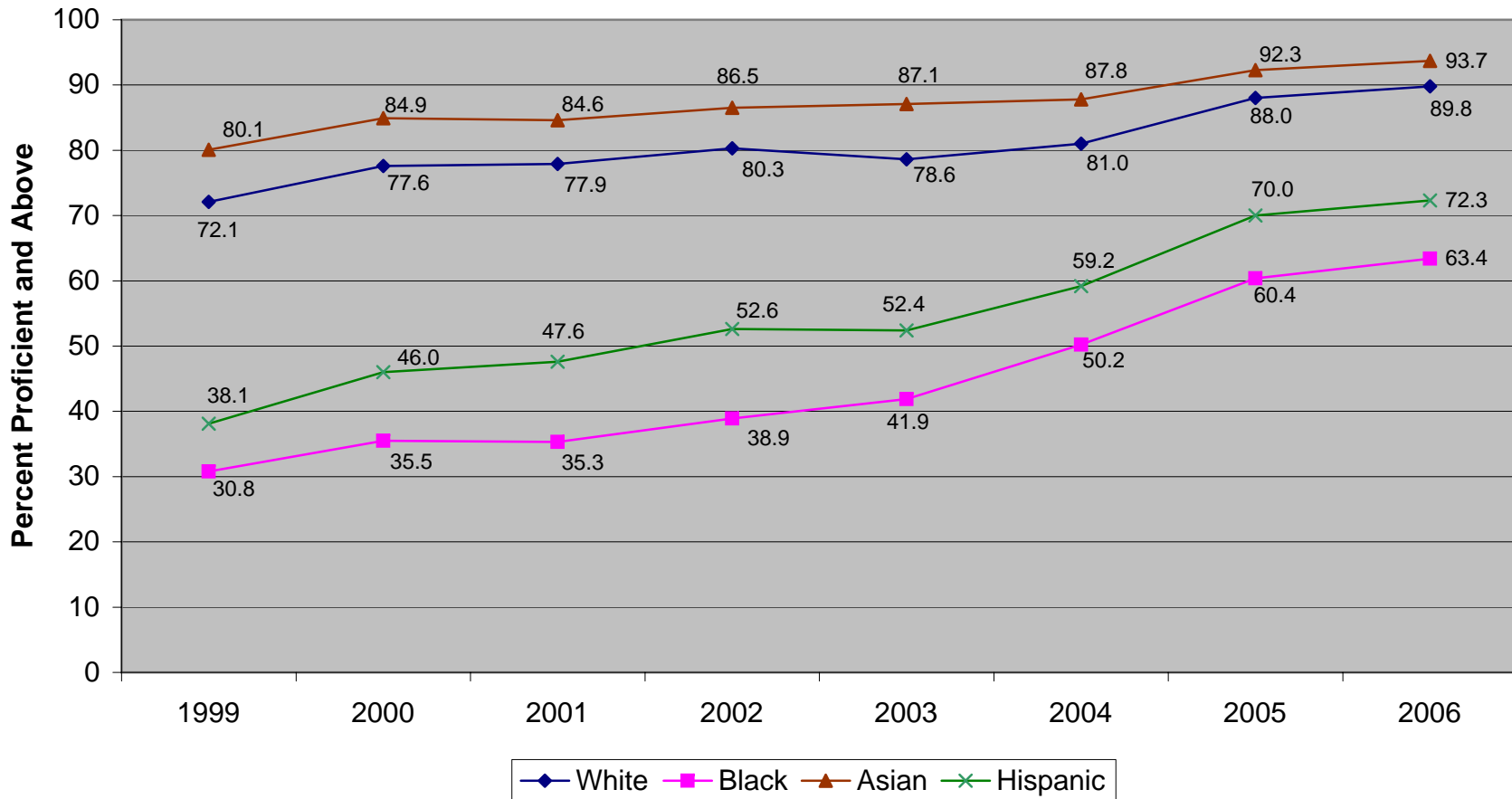
**New Jersey Assessment of Fourth Grade Students  
Language Arts Literacy Percent Proficient and Above by Ethnicity (2001-2006)<sup>1,2</sup>**



<sup>1</sup>Elementary School Proficiency Assessment (ESPA), 2001-2002; New Jersey Assessment of Skills and Knowledge (NJ ASK4), 2003-2006. For Language Arts Literacy, 2001 was the standard setting year for the ESPA and NJ ASK4.

<sup>2</sup>In 2005 and 2006, ethnic groups do not include students who identified themselves as multiple ethnicities.

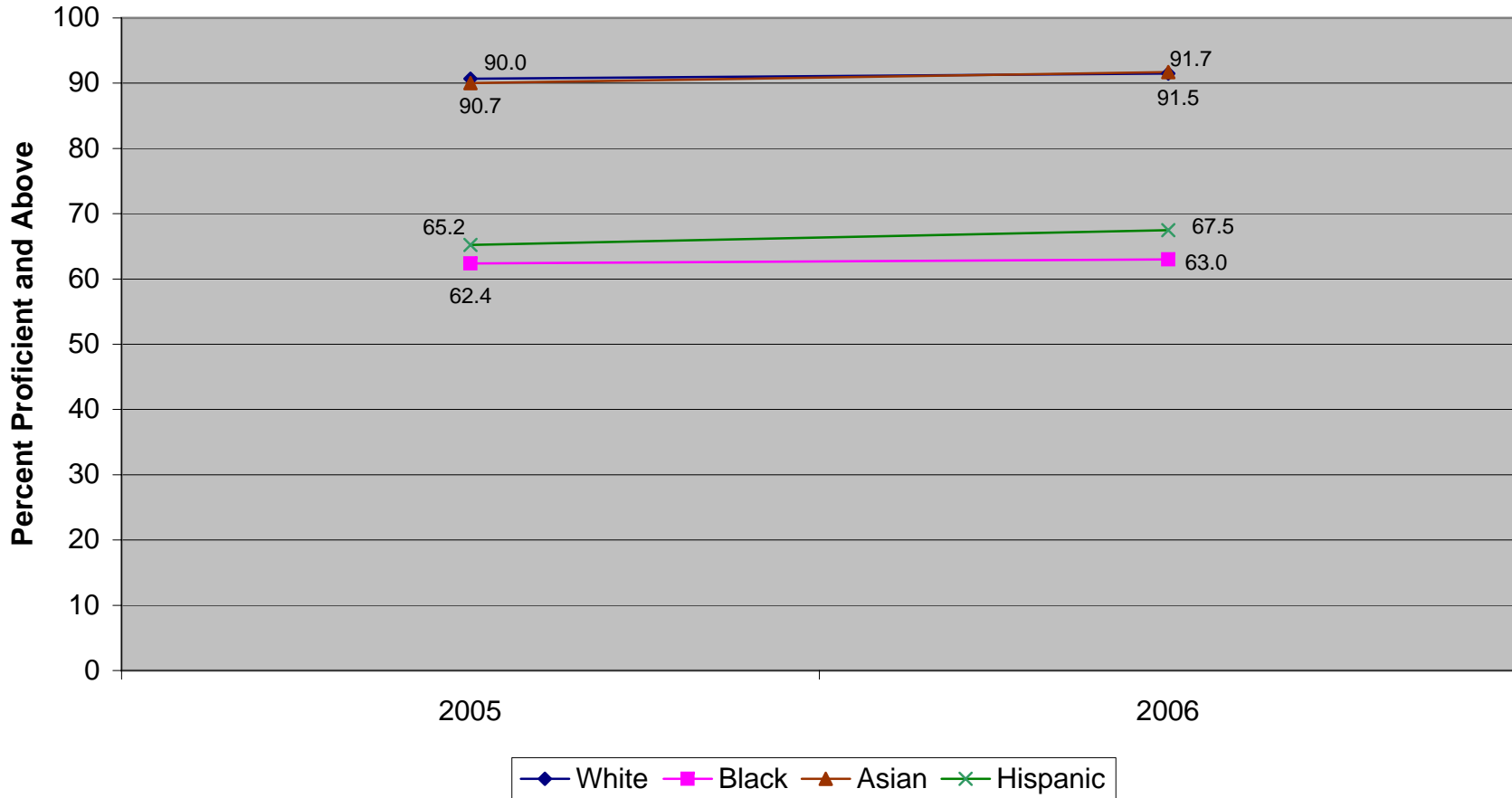
### New Jersey Assessment of Fourth Grade Students Mathematics Percent Proficient and Above by Ethnicity (1999-2006)<sup>1,2</sup>



<sup>1</sup>Elementary School Proficiency Assessment (ESPA), 1999-2002; New Jersey Assessment of Skills and Knowledge (NJ ASK4), 2003-2006. For Mathematics, 1999 was the standard setting year for the ESPA and NJ ASK4.

<sup>2</sup>In 2005 and 2006, ethnic groups do not include students who identified themselves as multiple ethnicities.

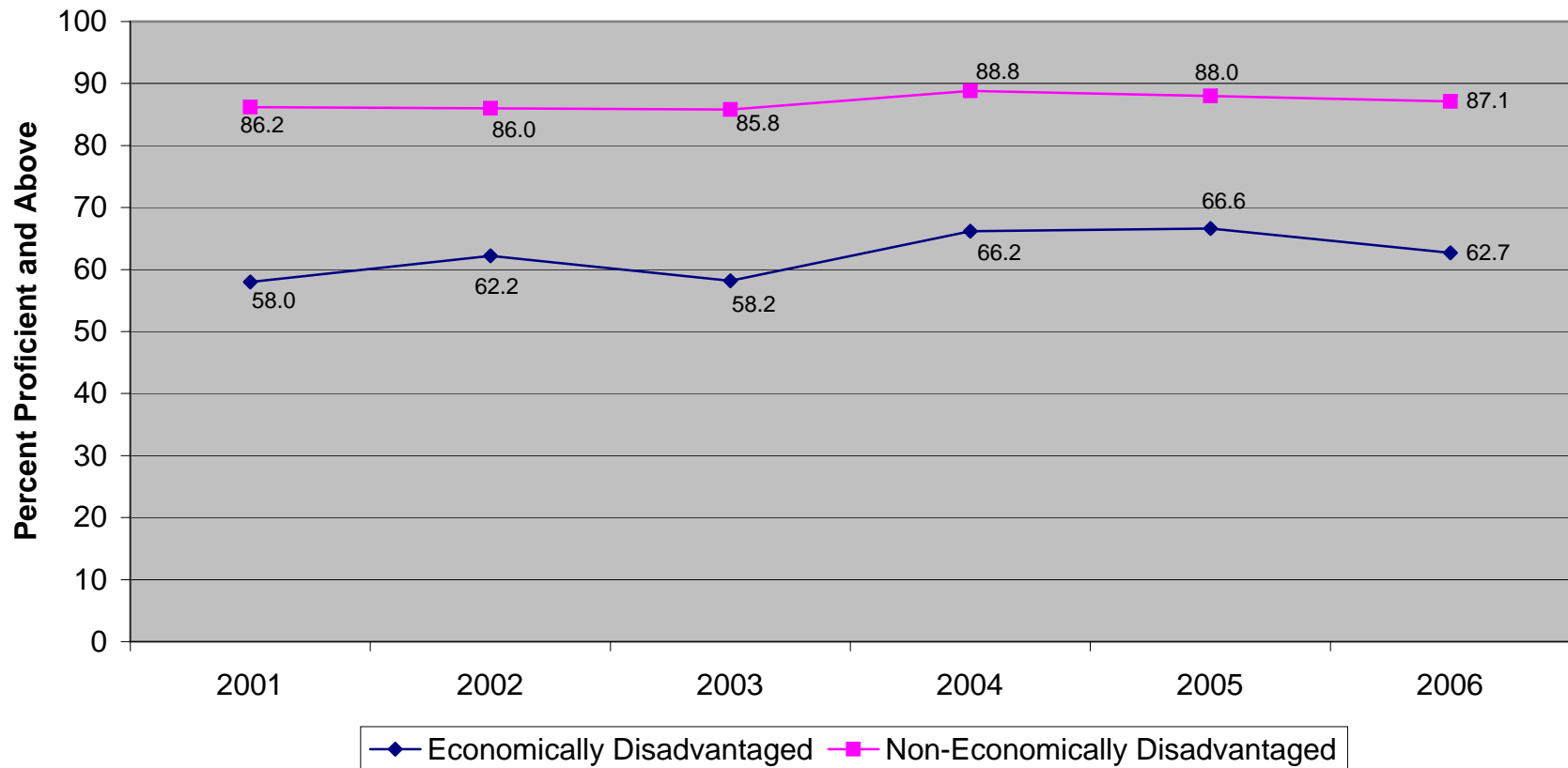
**New Jersey Assessment of Fourth Grade Students  
Science Percent Proficient and Above by Ethnicity (2005-2006)<sup>1,2</sup>**



<sup>1</sup>New Jersey Assessment of Skills and Knowledge (NJ ASK4), 2005-2006. For Science, 2005 was the standard setting year for the NJ ASK4.

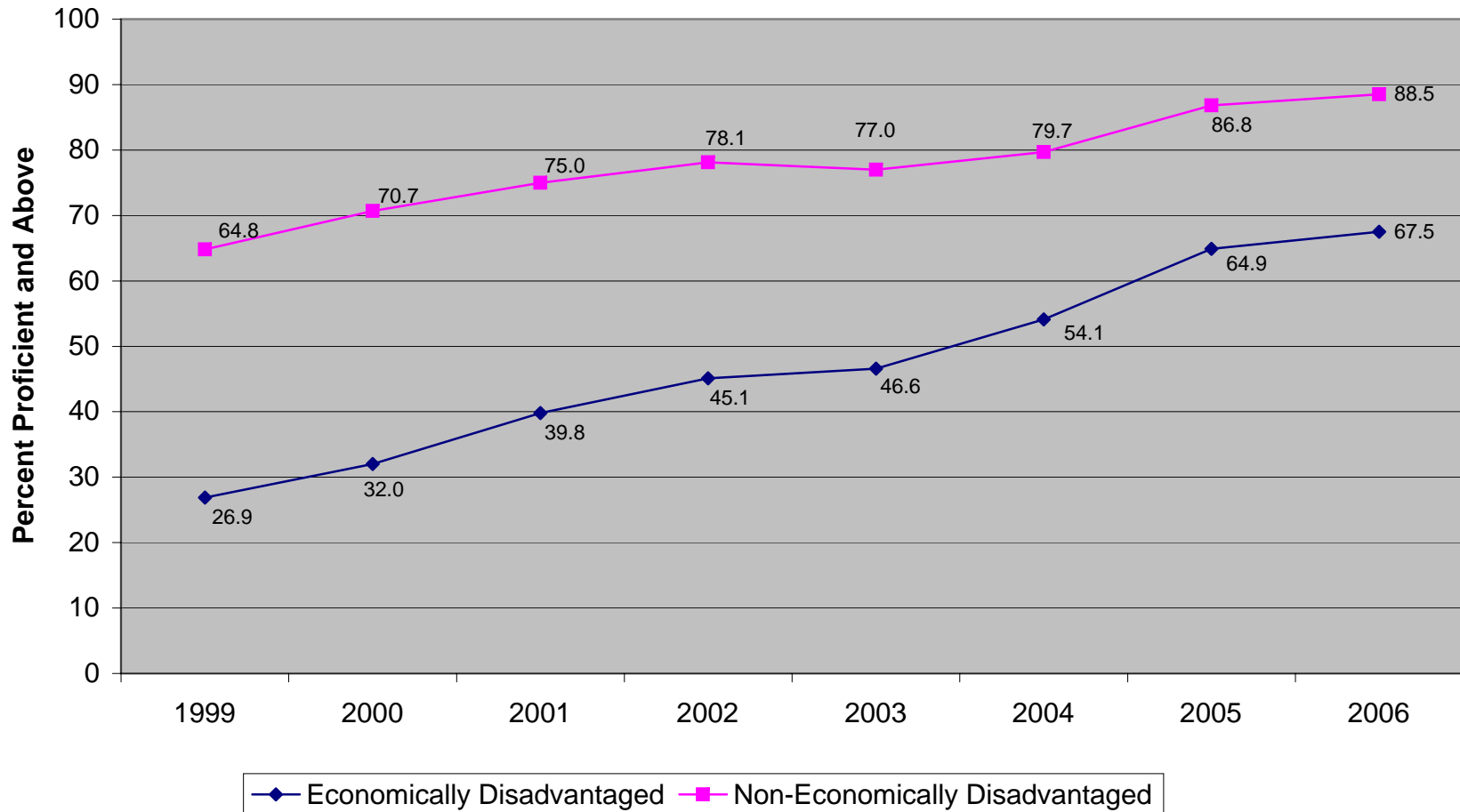
<sup>2</sup>In 2005 and 2006, ethnic groups do not include students who identified themselves as multiple ethnicities.

**New Jersey Assessment of Fourth Grade Students  
Language Arts Literacy Percent Proficient and Above by Economic Status  
(2001-2006)<sup>1</sup>**



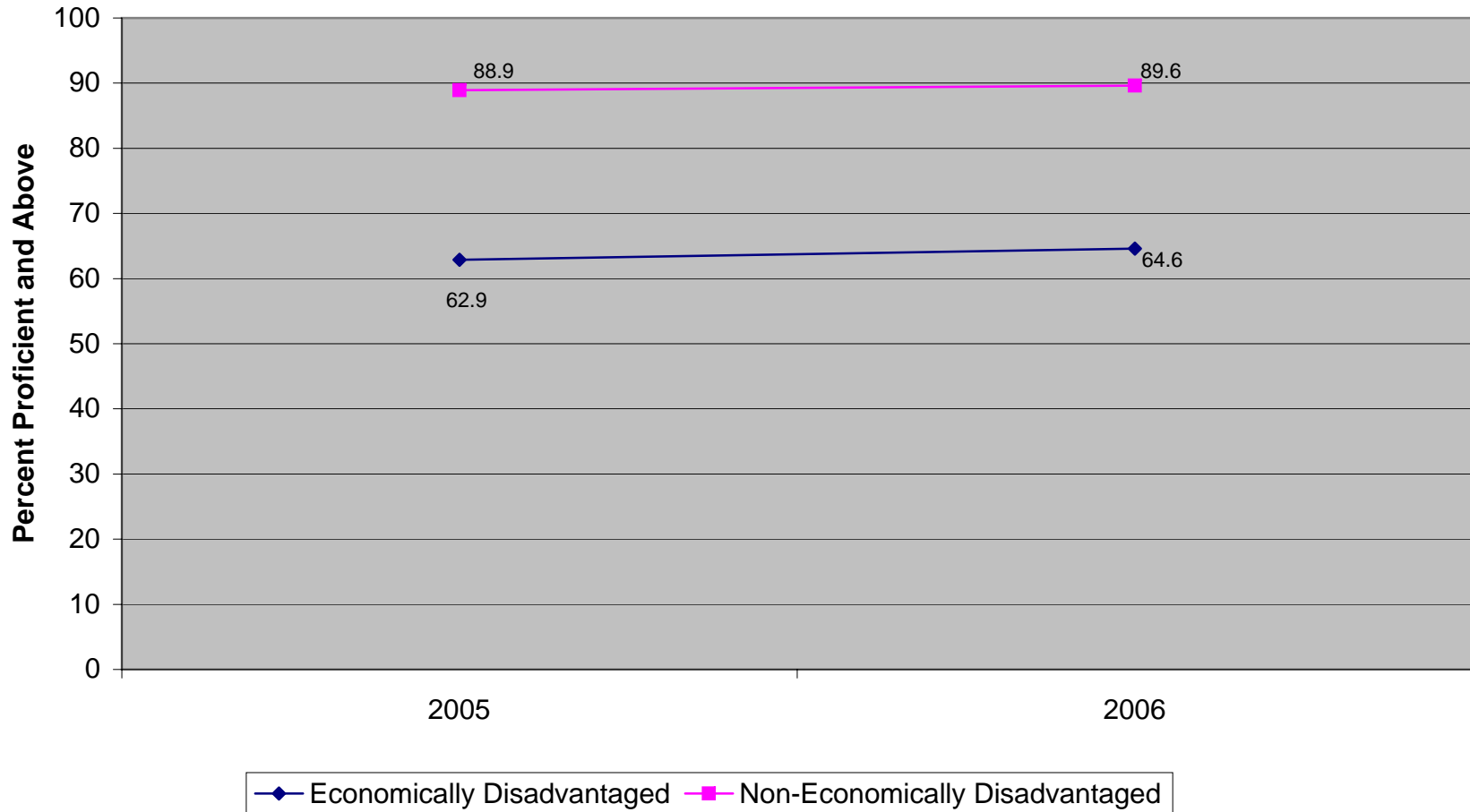
<sup>1</sup>Elementary School Proficiency Assessment (ESPA), 2001-2002; New Jersey Assessment of Skills and Knowledge (NJ ASK4), 2003-2006. For Language Arts Literacy, 2001 was the standard setting year for the ESPA and NJ ASK4.

### New Jersey Assessment of Fourth Grade Students Mathematics Percent Proficient and Above by Economic Status (1999-2006)<sup>1</sup>



<sup>1</sup>Elementary School Proficiency Assessment (ESPA), 1999-2002; New Jersey Assessment of Skills and Knowledge (NJ ASK4), 2003-2006. For Mathematics, 1999 was the standard setting year for the ESPA and NJ ASK4.

**New Jersey Assessment of Fourth Grade Students  
Science Percent Proficient and Above by Economic Status (2005-2006)<sup>1</sup>**



<sup>1</sup>New Jersey Assessment of Skills and Knowledge (NJ ASK4), 2005-2006. For Science, 2005 was the standard setting year for the NJ ASK4.