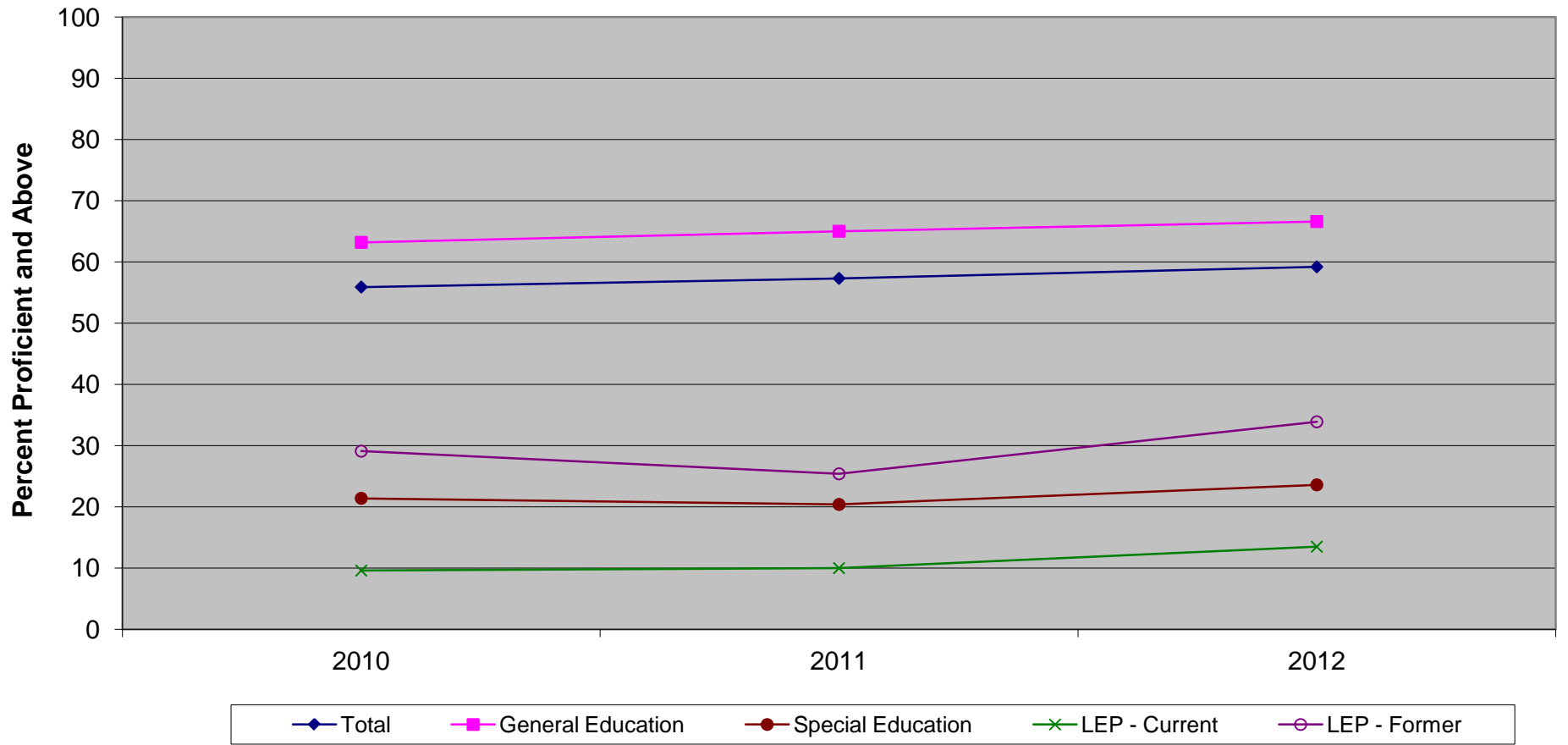


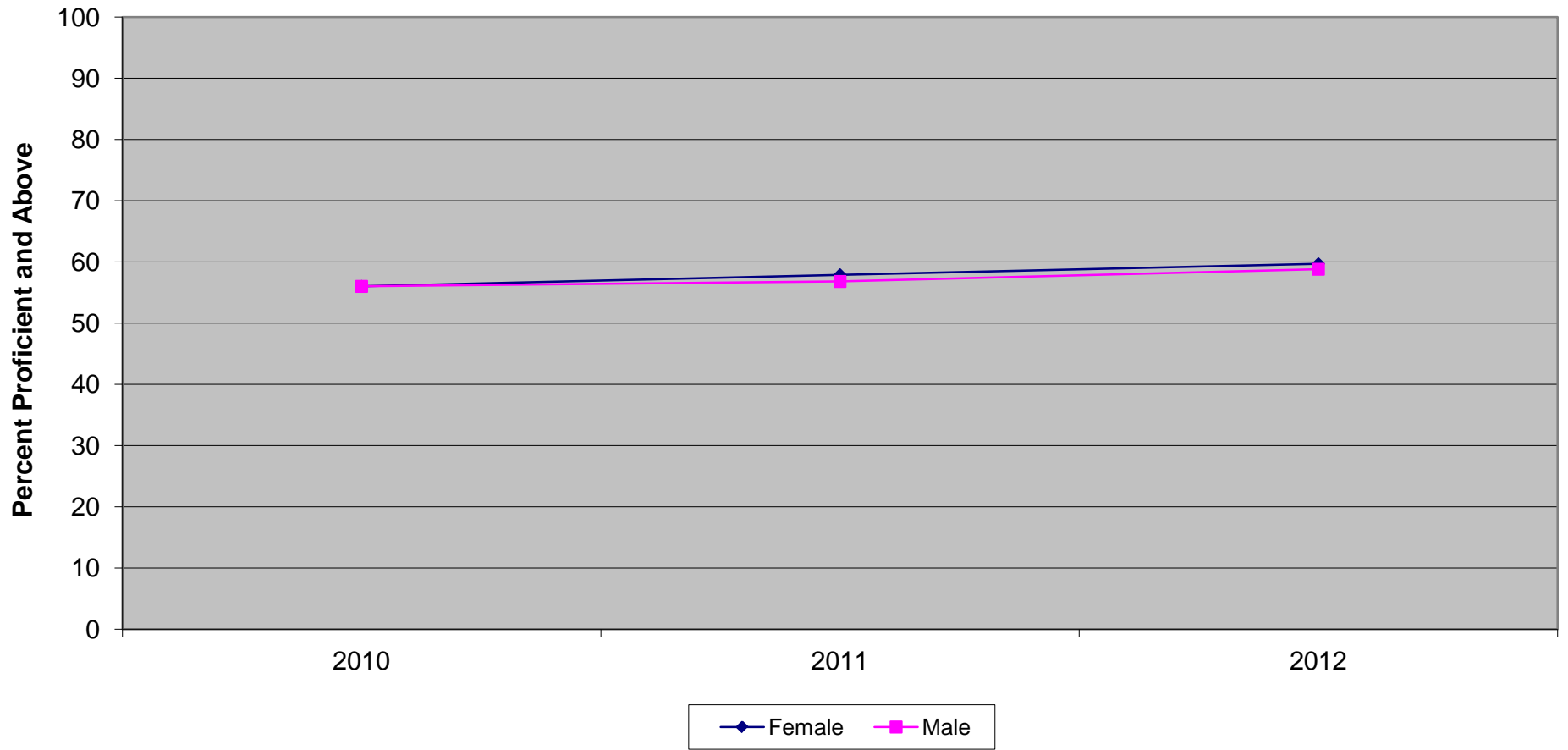
New Jersey Biology Competency Test Proficient and Above by Instructional Group (2010 - 2012)



**New Jersey Biology Competency Test
Proficient and Above by Instructional Group (2010 - 2012)**

	2010	2011	2012
Total	55.9	57.3	59.2
General Education	63.2	65.0	66.6
Special Education	21.4	20.4	23.6
LEP - Current	9.6	10.0	13.5
LEP - Former	29.1	25.4	33.9

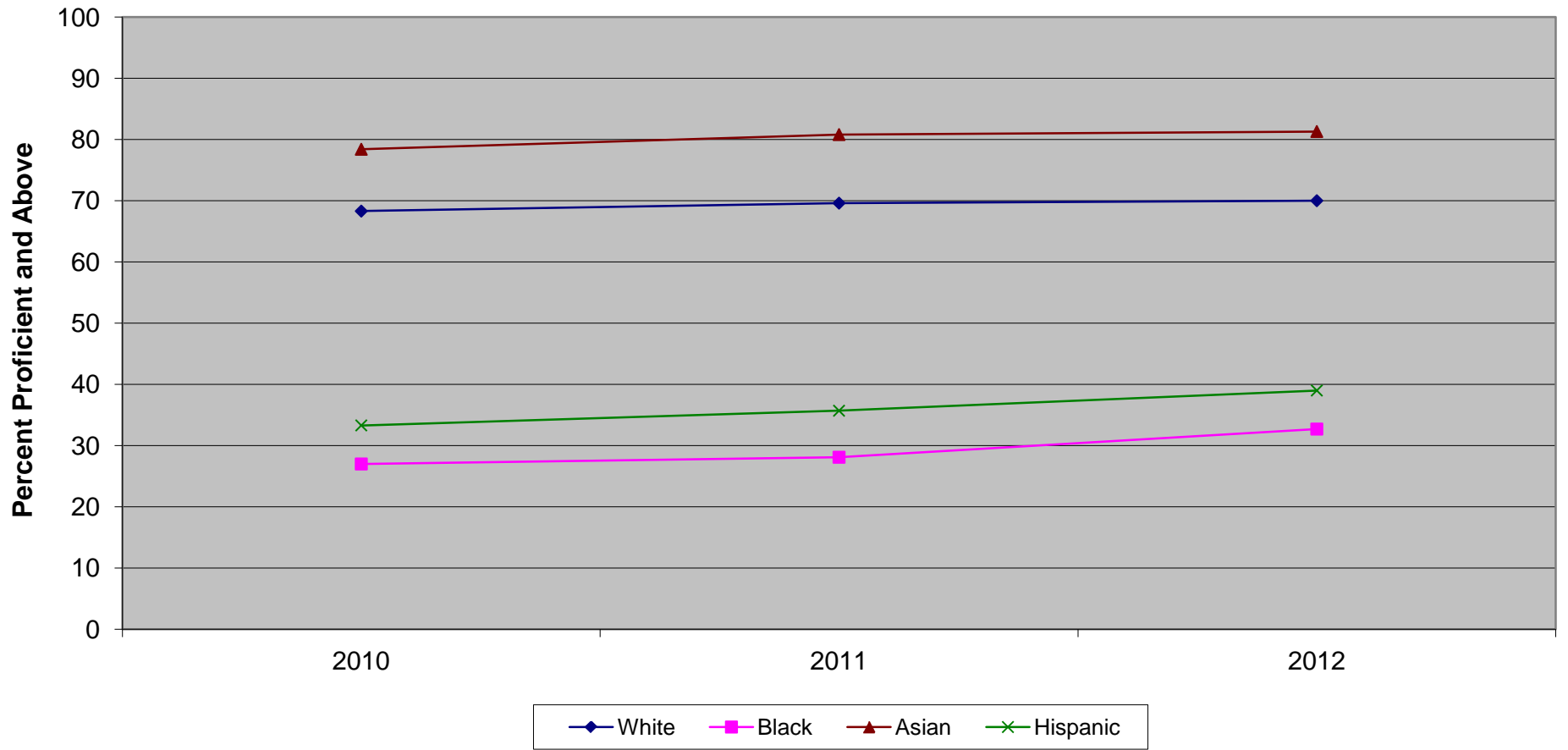
**New Jersey Biology Competency Test
Proficient and Above by Gender (2010 - 2012)**



**New Jersey Biology Competency Test
Proficient and Above by Gender (2010 - 2012)**

	2010	2011	2012
Female	56.0	57.9	59.7
Male	56.0	56.8	58.8

New Jersey Biology Competency Test Proficient and Above by Ethnicity (2010 - 2012)

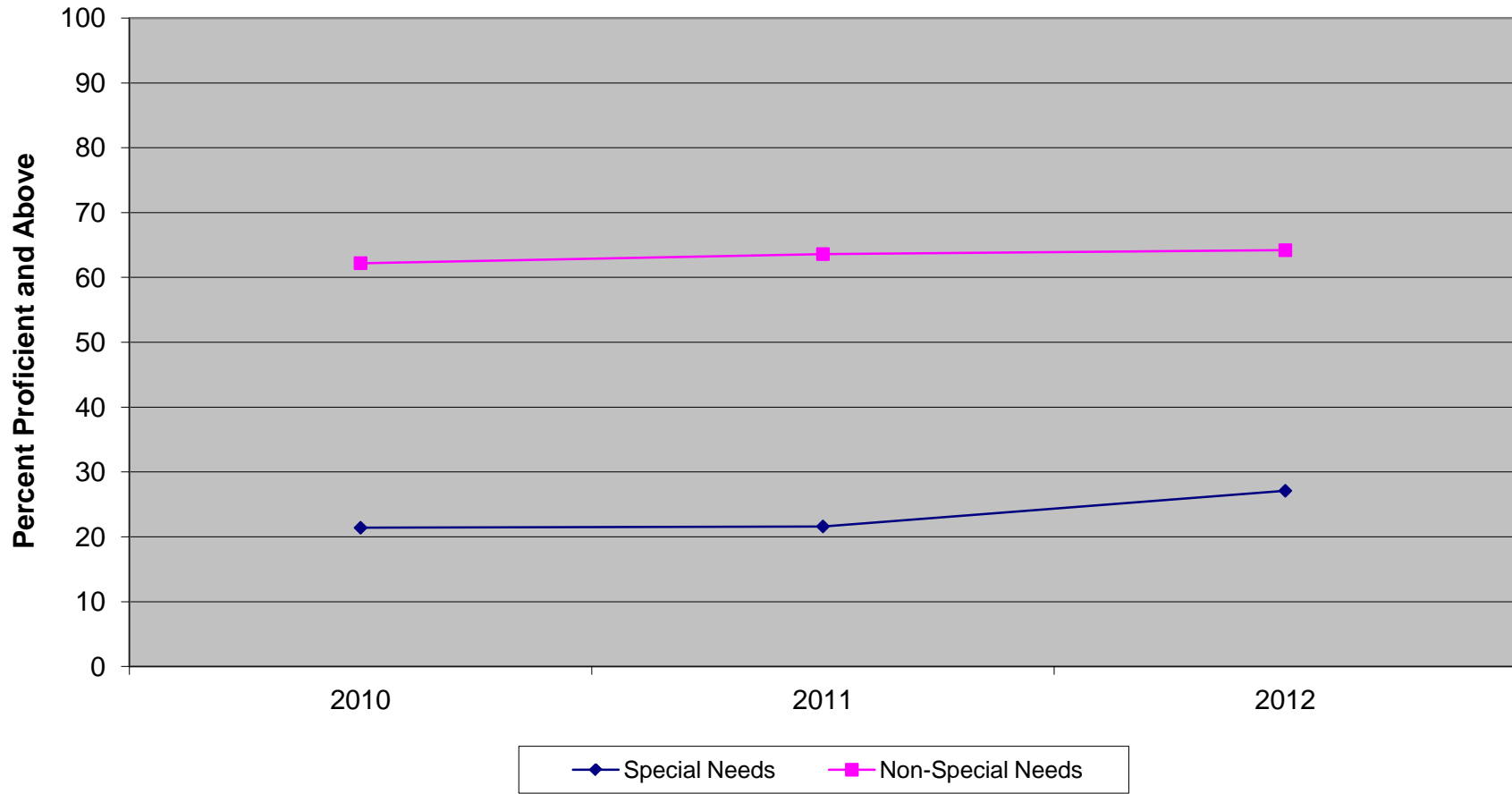


Ethnic codes Pacific Islander, American Indian/Alaskan Native and Other are not shown due to the small number of students in these categories.

**New Jersey Biology Competency Test
Proficient and Above by Ethnicity (2010 - 2012)**

	2010	2011	2012
White	68.3	69.6	70.0
Black	27.0	28.1	32.7
Asian	78.4	80.8	81.3
Hispanic	33.3	35.7	39.0

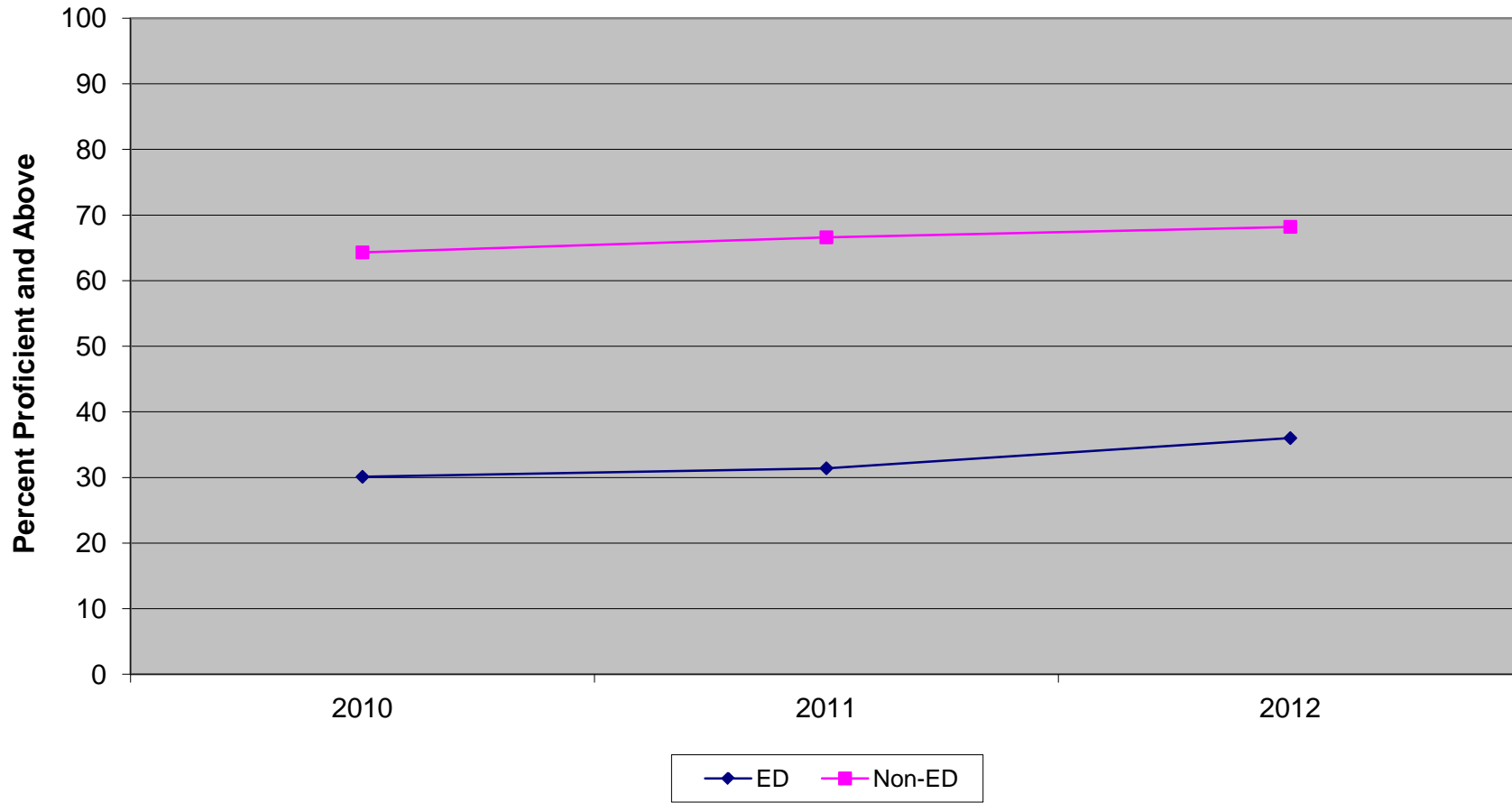
New Jersey Biology Competency Test Special Needs vs Non-Special Needs (2010 - 2012)



**New Jersey Biology Competency Test
Special Needs vs Non-Special Needs (2010 - 2012)**

	2010	2011	2012
Special Needs	21.4	21.6	27.1
Non-Special Needs	62.2	63.6	64.2

**New Jersey Biology Competency Test
Economically Disadvantaged vs Non-Economically Disadvantaged (2010 - 2012)**



**New Jersey Biology Competency Test
Economically Disadvantaged vs Non-Economically Disadvantaged (2010 - 2012)**

	2010	2011	2012
ED	30.1	31.4	36.0
Non-ED	64.3	66.6	68.2