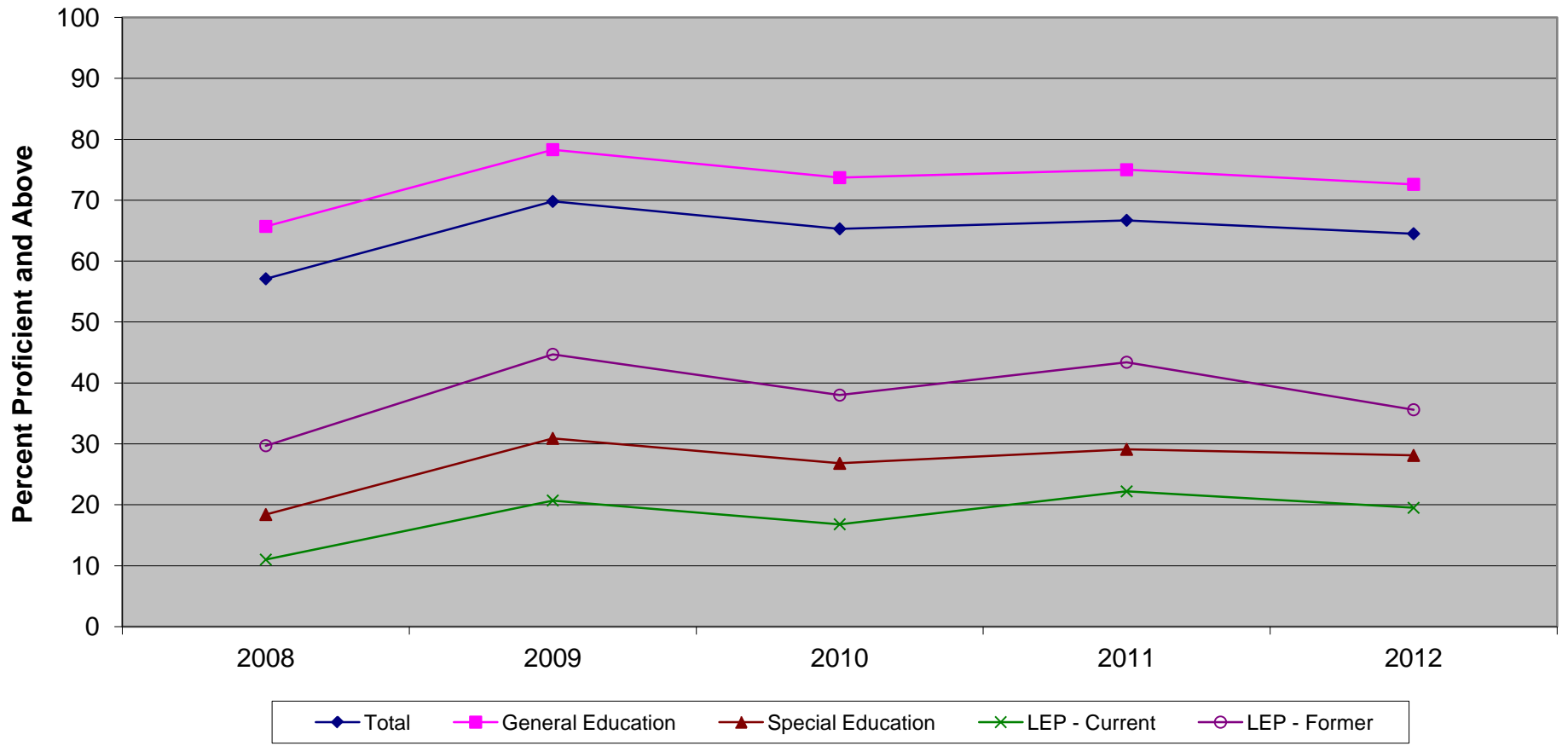


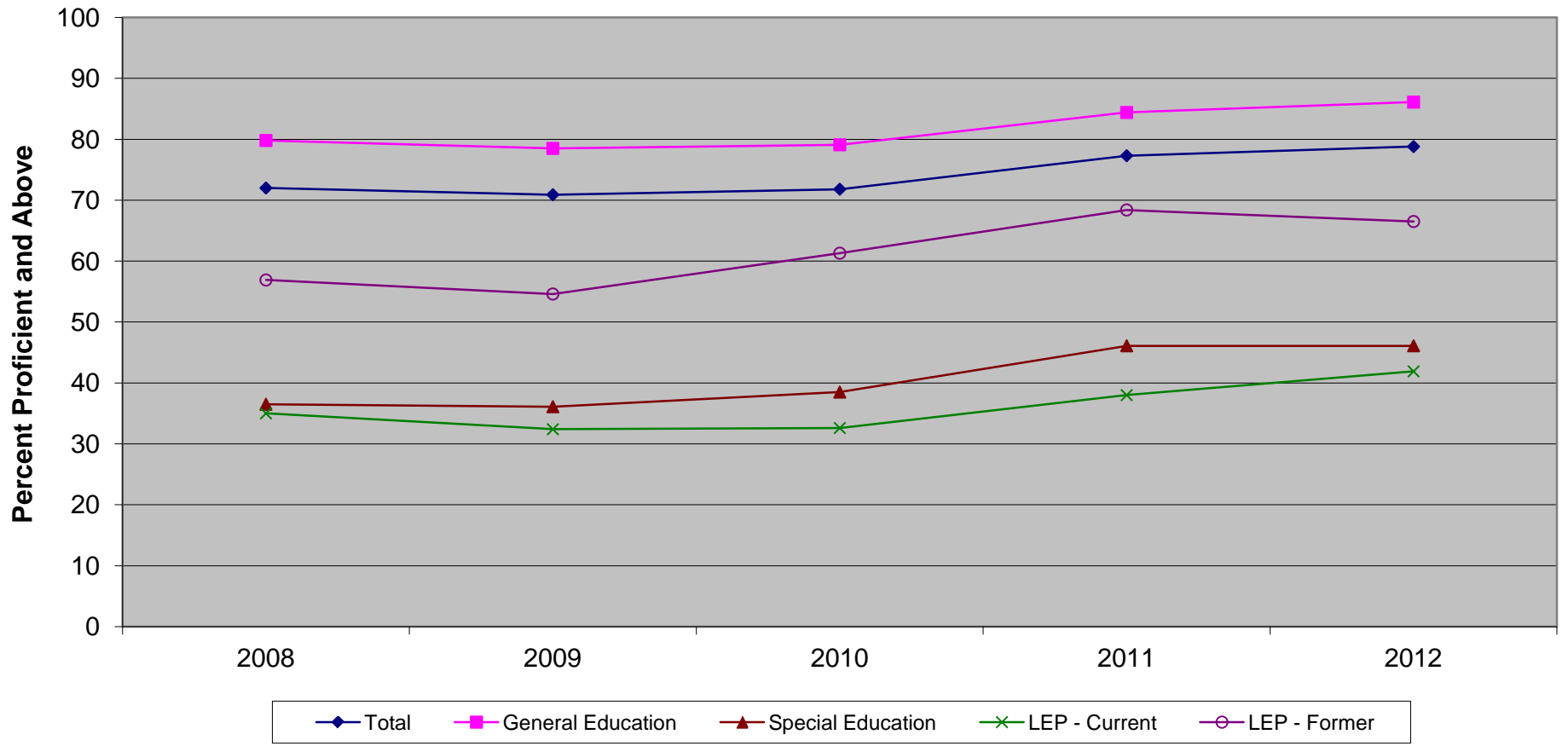
New Jersey Assessment of Skills and Knowledge  
Grade 6 Language Arts Literacy Proficient and Above  
by Instructional Group (2008 - 2012)



**New Jersey Assessment of Skills and Knowledge  
Grade 6 Language Arts Literacy Proficient and Above  
by Instructional Group (2008 - 2012)**

	<b>2008</b>	<b>2009</b>	<b>2010</b>	<b>2011</b>	<b>2012</b>
Total	57.1	69.8	65.3	66.7	64.5
General Education	65.7	78.3	73.7	75.0	72.6
Special Education	18.4	30.9	26.8	29.1	28.1
LEP - Current	11.0	20.7	16.8	22.2	19.5
LEP - Former	29.7	44.7	38.0	43.4	35.6

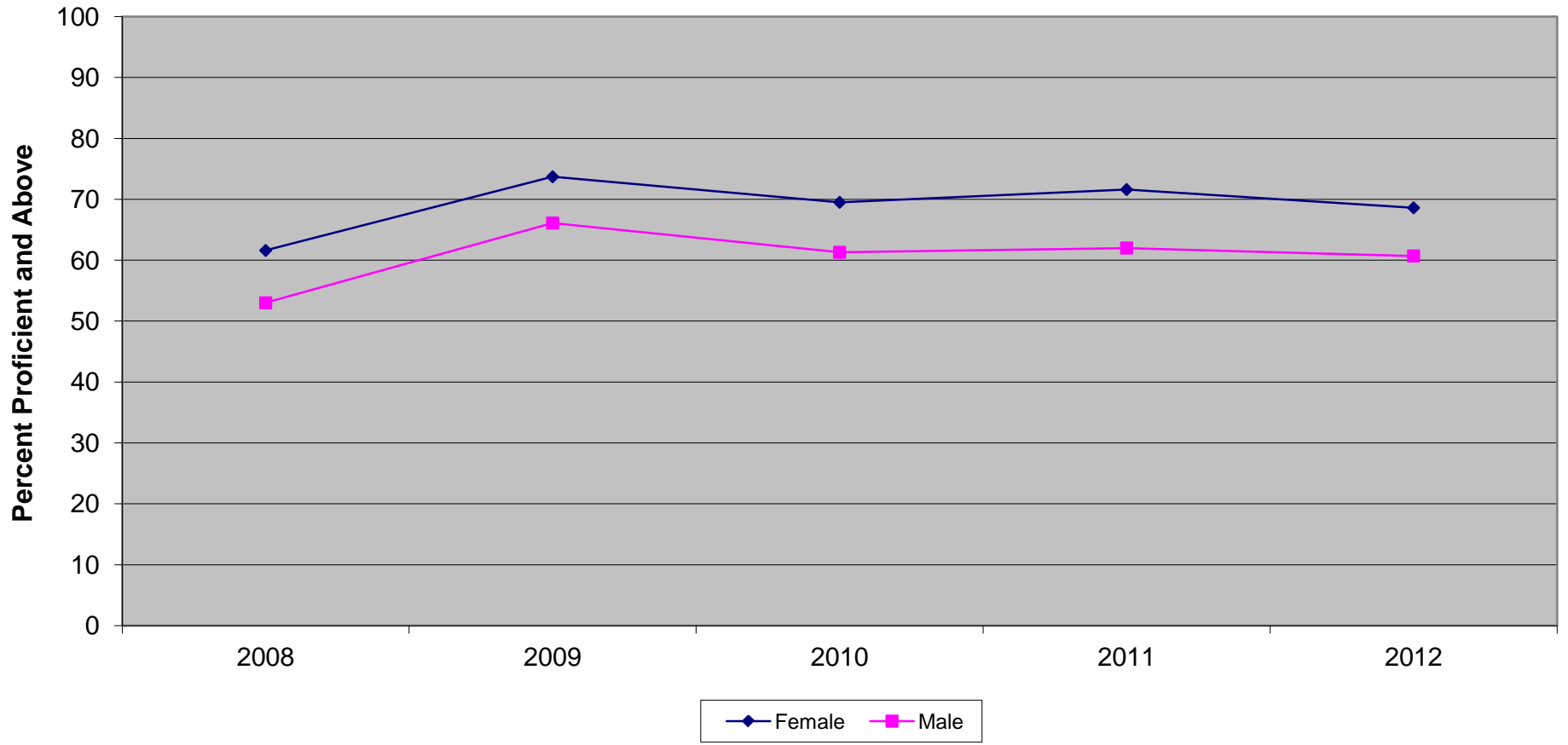
New Jersey Assessment of Skills and Knowledge  
Grade 6 Mathematics Proficient and Above  
by Instructional Group (2008 - 2012)



**New Jersey Assessment of Skills and Knowledge  
Grade 6 Mathematics Proficient and Above  
by Instructional Group (2008 - 2012)**

	<b>2008</b>	<b>2009</b>	<b>2010</b>	<b>2011</b>	<b>2012</b>
Total	72.0	70.9	71.8	77.3	78.8
General Education	79.8	78.5	79.1	84.4	86.1
Special Education	36.5	36.1	38.5	46.1	46.1
LEP - Current	35.0	32.4	32.6	38.0	41.9
LEP - Former	56.9	54.6	61.3	68.4	66.5

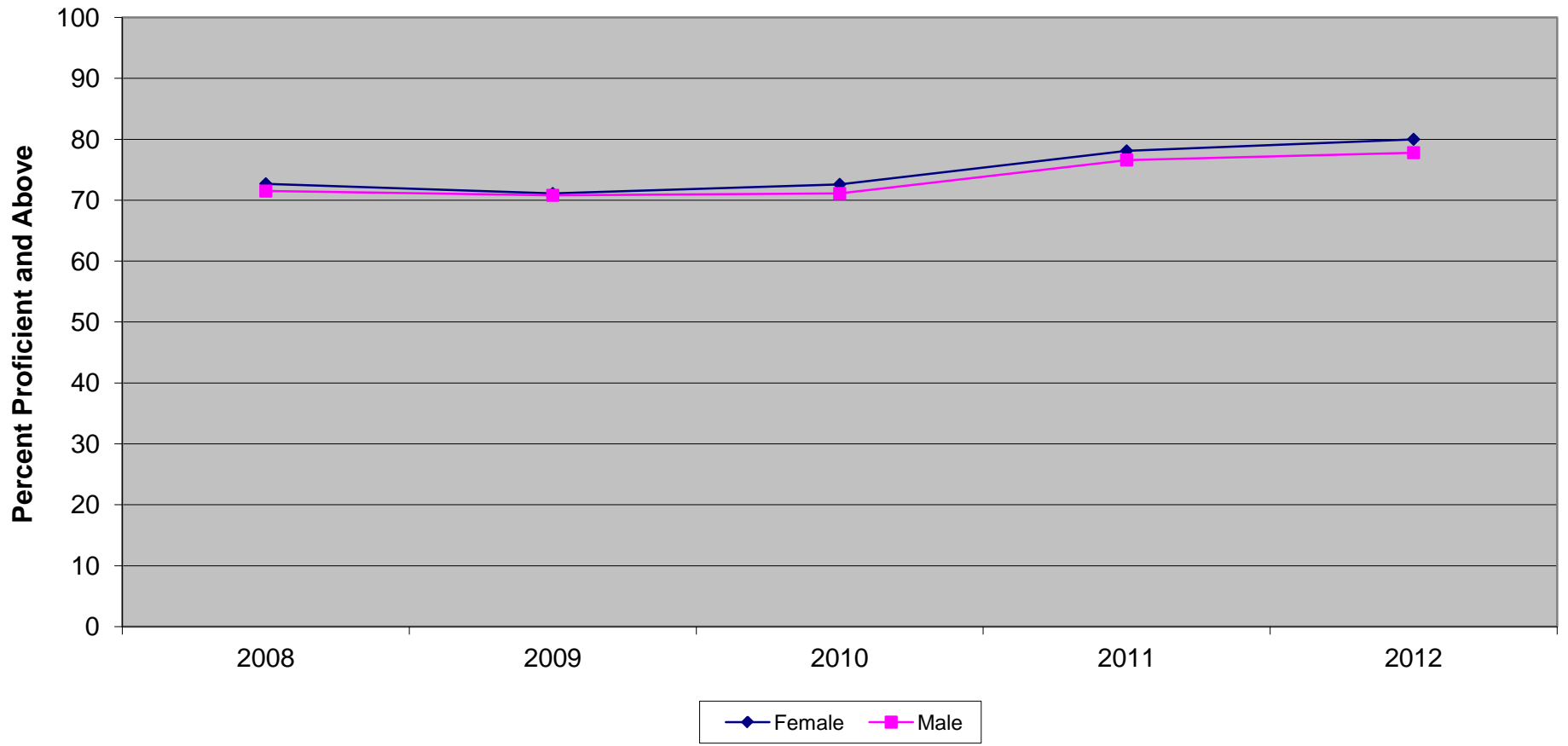
New Jersey Assessment of Skills and Knowledge  
Grade 6 Language Arts Literacy Proficient and Above  
by Gender (2008 - 2012)



**New Jersey Assessment of Skills and Knowledge  
Grade 6 Language Arts Literacy Proficient and Above  
by Gender (2008 - 2012)**

	<b>2008</b>	<b>2009</b>	<b>2010</b>	<b>2011</b>	<b>2012</b>
Female	61.6	73.7	69.5	71.6	68.6
Male	53.0	66.1	61.3	62.0	60.7

New Jersey Assessment of Skills and Knowledge  
Grade 6 Mathematics Proficient and Above  
by Gender (2008 - 2012)

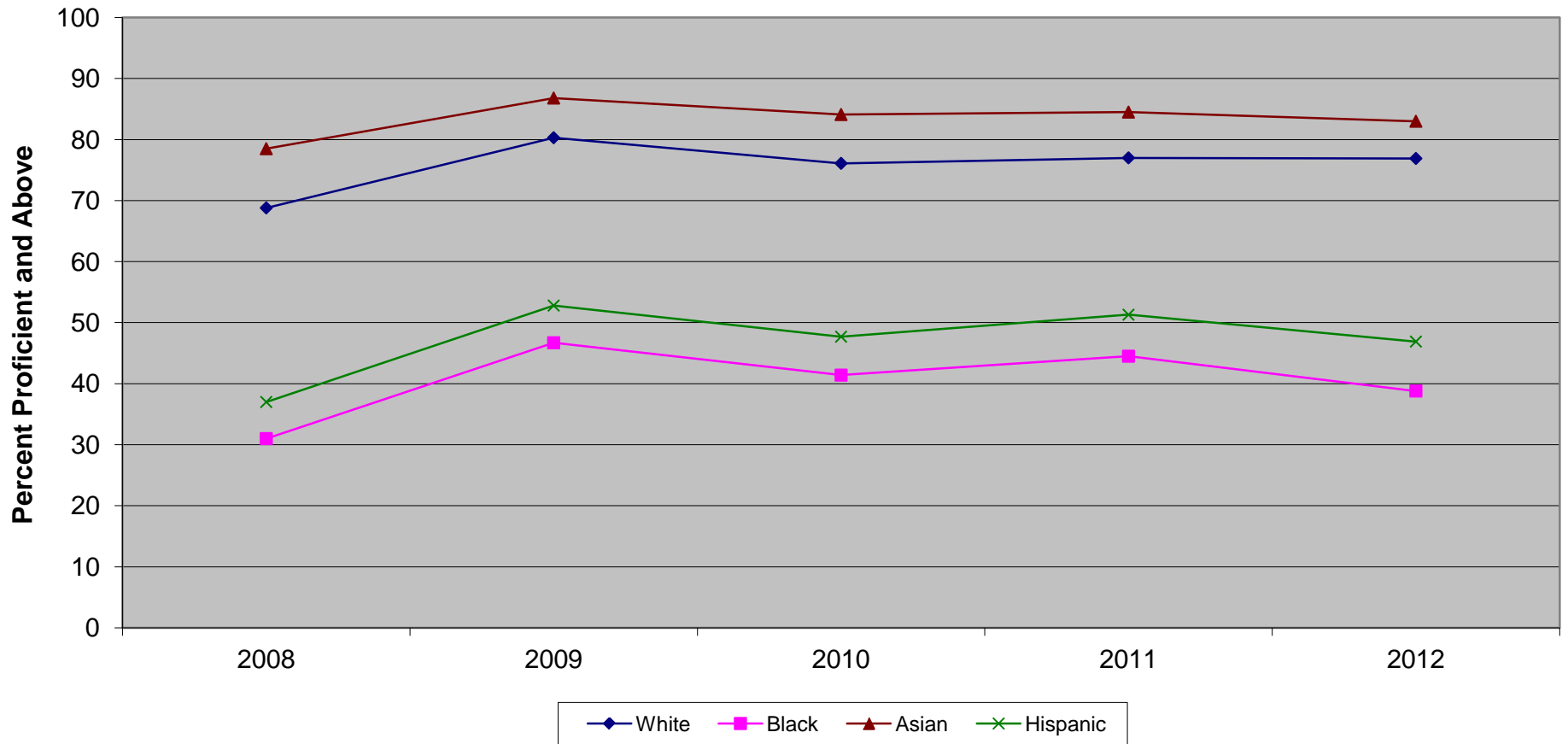


**New Jersey Assessment of Skills and Knowledge  
Grade 6 Mathematics Proficient and Above  
by Gender (2008 - 2012)**

	<b>2008</b>	<b>2009</b>	<b>2010</b>	<b>2011</b>	<b>2012</b>
Female	72.7	71.1	72.6	78.1	80.0
Male	71.5	70.8	71.1	76.6	77.8



New Jersey Assessment of Skills and Knowledge  
Grade 6 Language Arts Literacy Proficient and Above  
by Ethnicity (2008 - 2012)

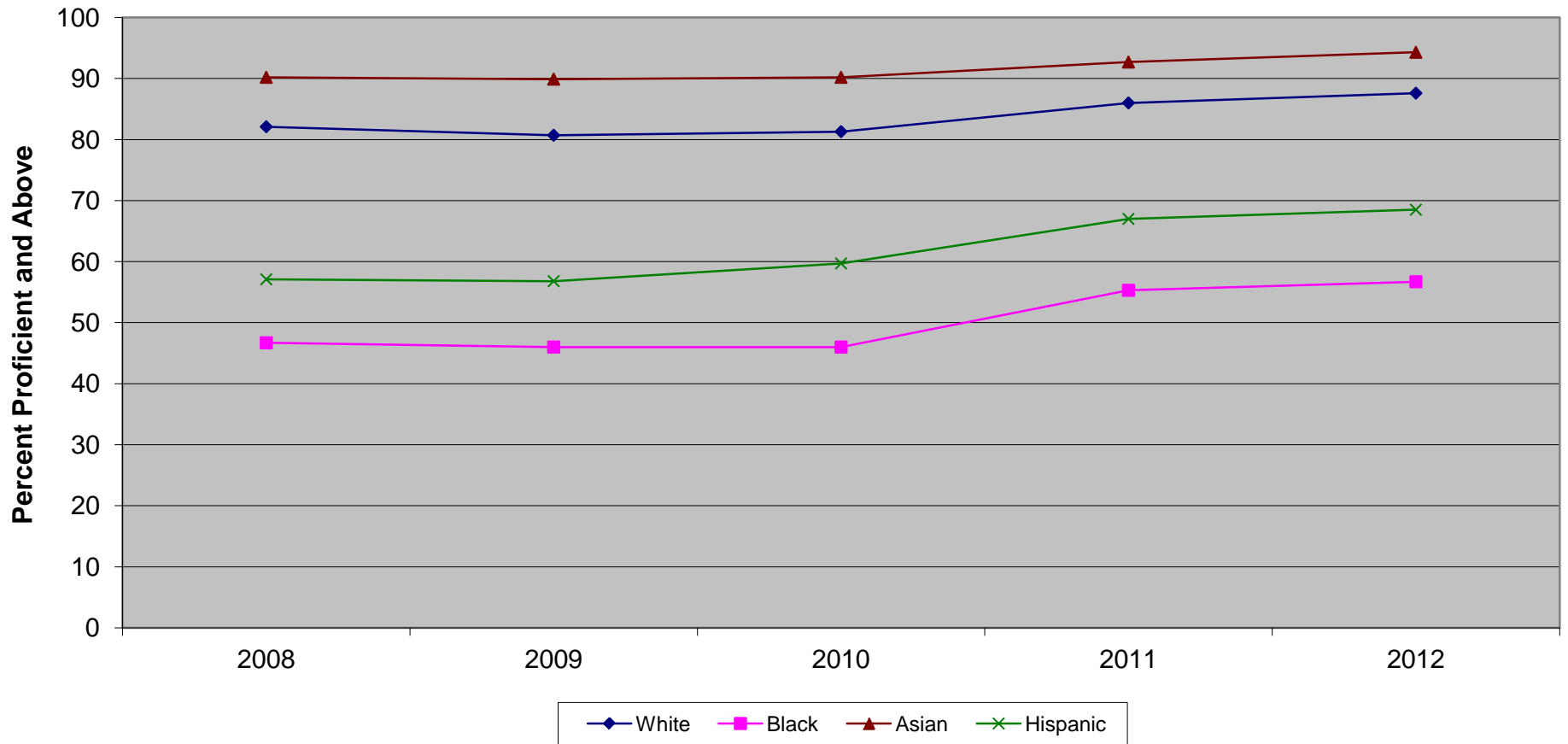


Ethnic codes Pacific Islander, American Indian/Alaskan Native and Other are not shown due to the small number of students in these categories.

**New Jersey Assessment of Skills and Knowledge  
Grade 6 Language Arts Literacy Proficient and Above  
by Ethnicity (2008 - 2012)**

	<b>2008</b>	<b>2009</b>	<b>2010</b>	<b>2011</b>	<b>2012</b>
White	68.8	80.3	76.1	77.0	76.9
Black	31.0	46.7	41.4	44.5	38.8
Asian	78.5	86.8	84.1	84.5	83.0
Hispanic	37.0	52.8	47.7	51.3	75.9

New Jersey Assessment of Skills and Knowledge  
Grade 6 Mathematics Proficient and Above  
by Ethnicity (2008 - 2012)

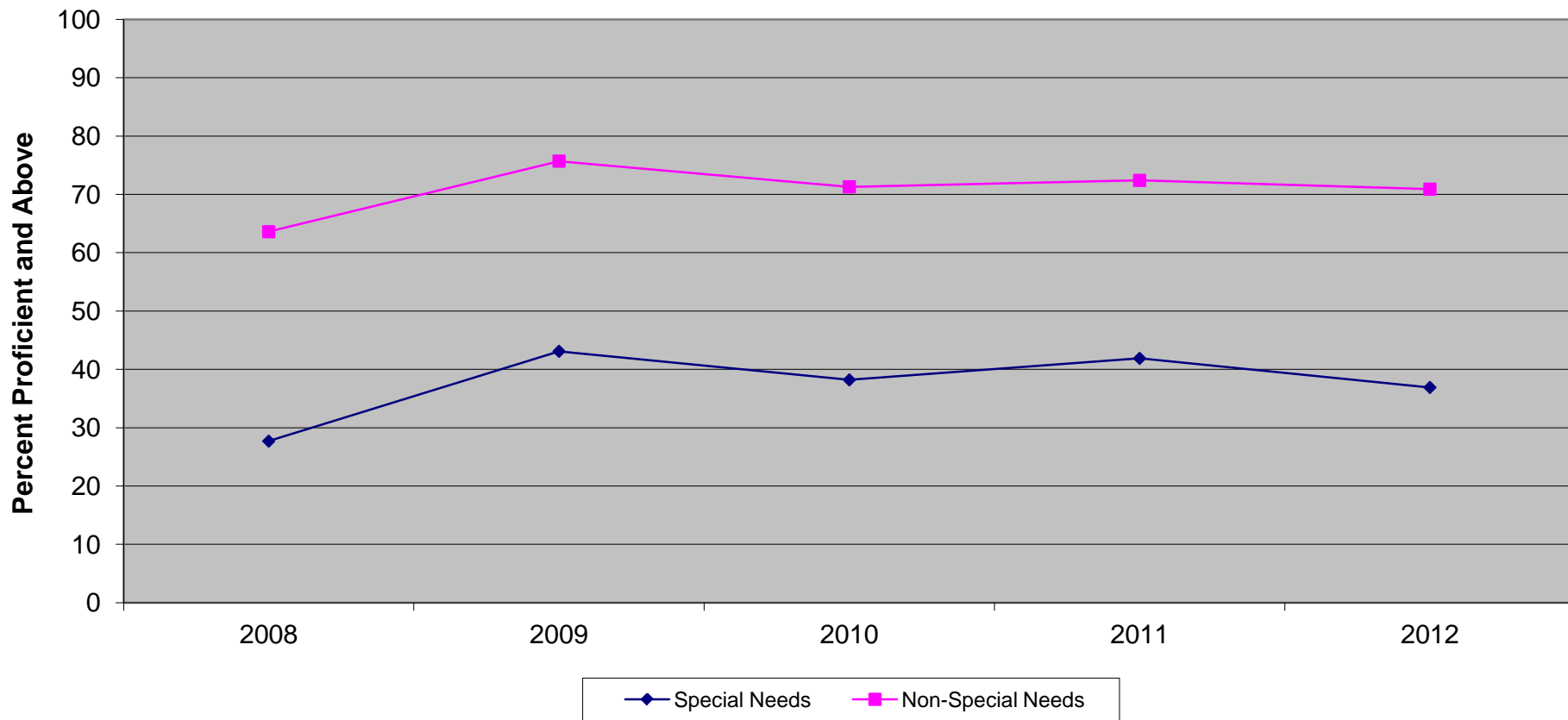


Ethnic codes Pacific Islander, American Indian/Alaskan Native and Other are not shown due to the small number of students in these categories.

**New Jersey Assessment of Skills and Knowledge  
Grade 6 Mathematics Proficient and Above  
by Ethnicity (2008 - 2012)**

	<b>2008</b>	<b>2009</b>	<b>2010</b>	<b>2011</b>	<b>2012</b>
White	82.1	80.7	81.3	86.0	87.6
Black	46.7	46.0	46.0	55.3	56.7
Asian	90.2	89.9	90.2	92.7	94.3
Hispanic	57.1	56.8	59.7	67.0	68.5

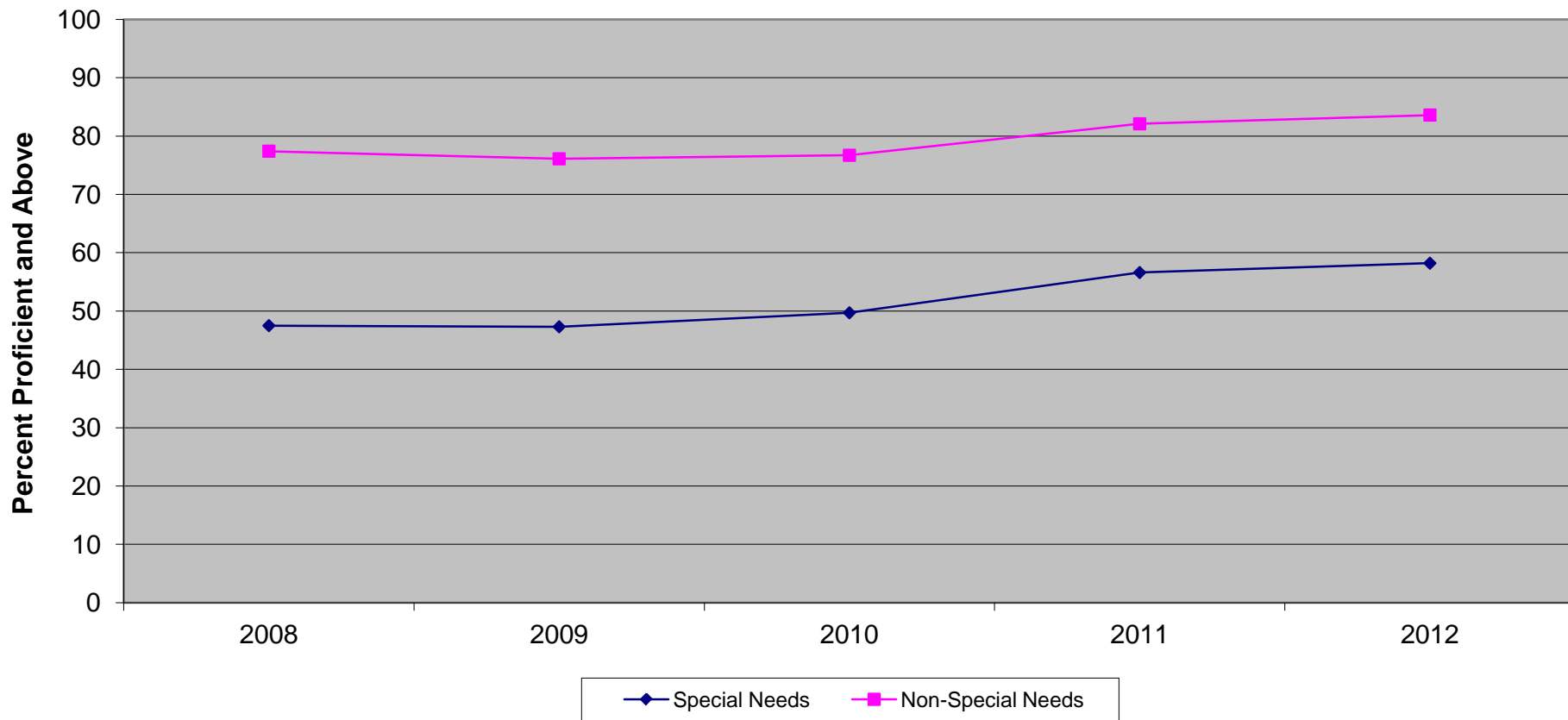
**New Jersey Assessment of Skills and Knowledge  
Grade 6 Language Arts Literacy Proficient and Above  
Special Needs vs Non-Special Needs (2008 - 2012)**



**New Jersey Assessment of Skills and Knowledge  
Grade 6 Language Arts Literacy Proficient and Above  
Special Needs vs Non-Special Needs (2008 - 2012)**

	<b>2008</b>	<b>2009</b>	<b>2010</b>	<b>2011</b>	<b>2012</b>
Special Needs	27.7	43.1	38.2	41.9	36.9
Non-Special Needs	63.6	75.7	71.3	72.4	70.9

New Jersey Assessment of Skills and Knowledge  
Grade 6 Mathematics Proficient and Above  
Special Needs vs Non-Special Needs (2008 - 2012)

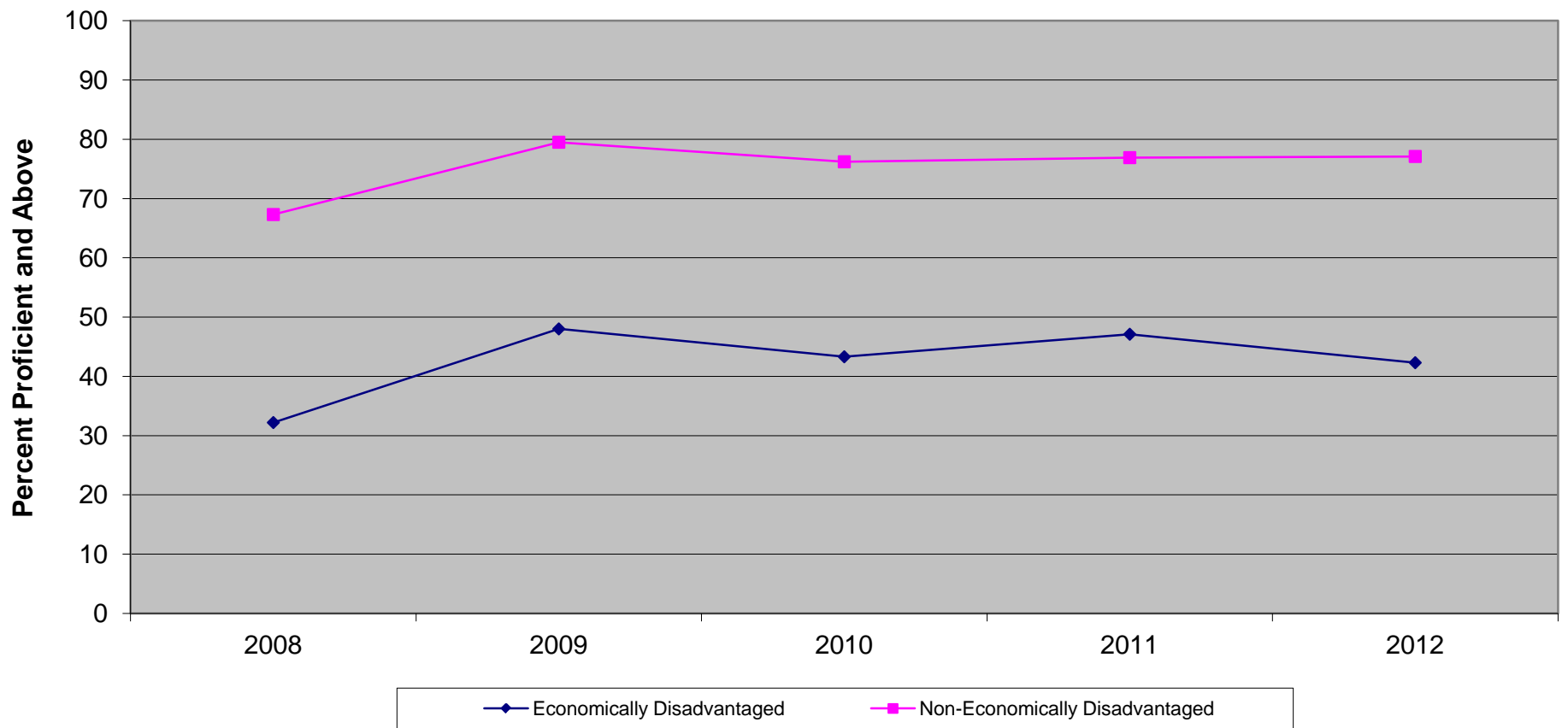


**New Jersey Assessment of Skills and Knowledge  
Grade 6 Mathematics Proficient and Above  
Special Needs vs Non-Special Needs (2008 - 2012)**

	<b>2008</b>	<b>2009</b>	<b>2010</b>	<b>2011</b>	<b>2012</b>
Special Needs	47.5	47.3	49.7	56.6	58.2
Non-Special Needs	77.4	76.1	76.7	82.1	83.6



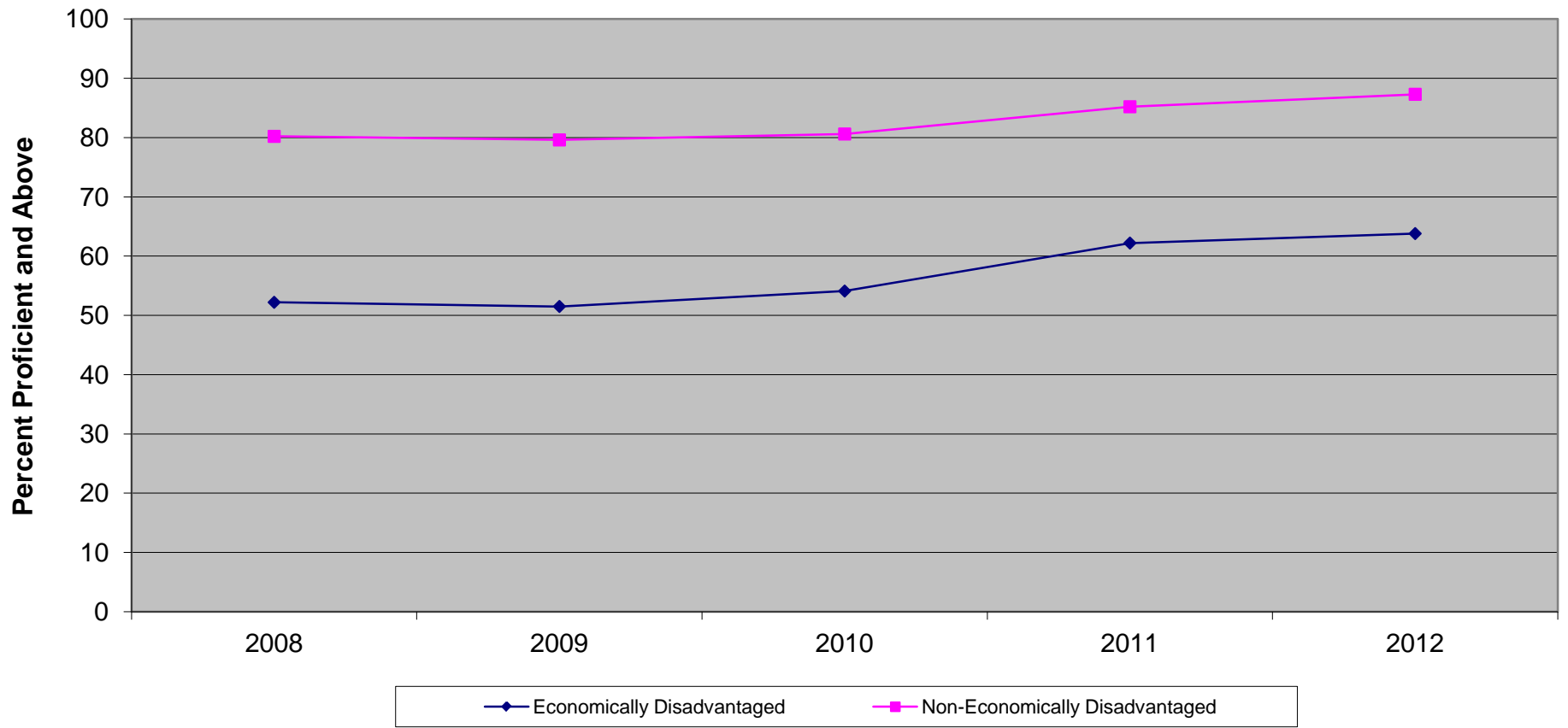
New Jersey Assessment of Skills and Knowledge  
Grade 6 Language Arts Literacy Proficient and Above  
Economically Disadvantaged vs Non-Economically Disadvantaged (2008 - 2012)



**New Jersey Assessment of Skills and Knowledge  
Grade 6 Language Arts Literacy Proficient and Above  
Economically Disadvantaged vs Non-Economically Disadvantaged (2008 - 2012)**

	<b>2008</b>	<b>2009</b>	<b>2010</b>	<b>2011</b>	<b>2012</b>
Economically Disadvantaged	32.2	48.0	43.3	47.1	42.3
Non-Economically Disadvantaged	67.3	79.5	76.2	76.9	77.1

New Jersey Assessment of Skills and Knowledge  
Grade 6 Mathematics Proficient and Above  
Economically Disadvantaged vs Non-Economically Disadvantaged (2008 - 2012)



**New Jersey Assessment of Skills and Knowledge  
Grade 6 Mathematics Proficient and Above  
Economically Disadvantaged vs Non-Economically Disadvantaged (2008 - 2012)**

	<b>2008</b>	<b>2009</b>	<b>2010</b>	<b>2011</b>	<b>2012</b>
Economically Disadvantaged	52.2	51.5	54.1	62.2	63.8
Non-Economically Disadvantaged	80.2	79.6	80.6	85.2	87.3