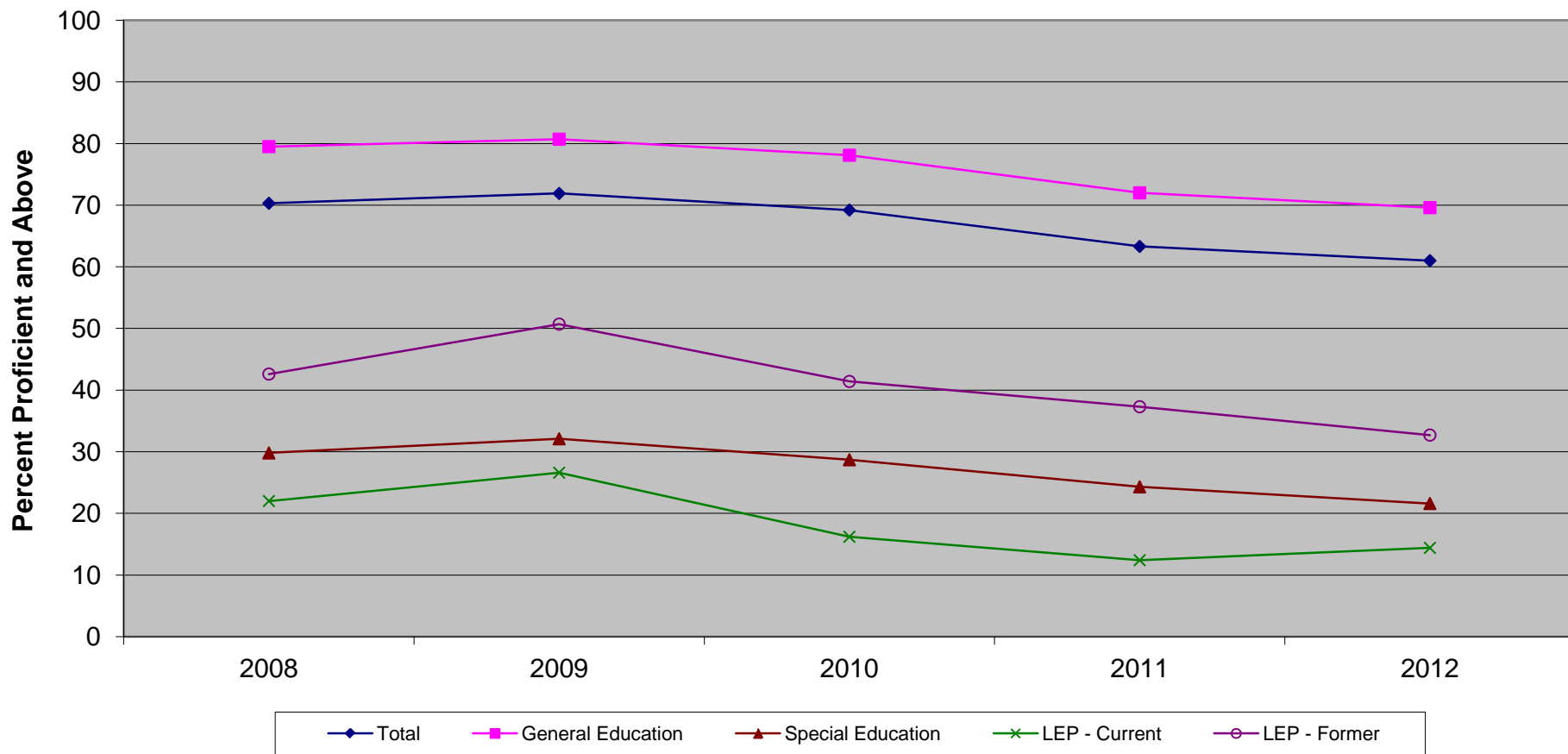


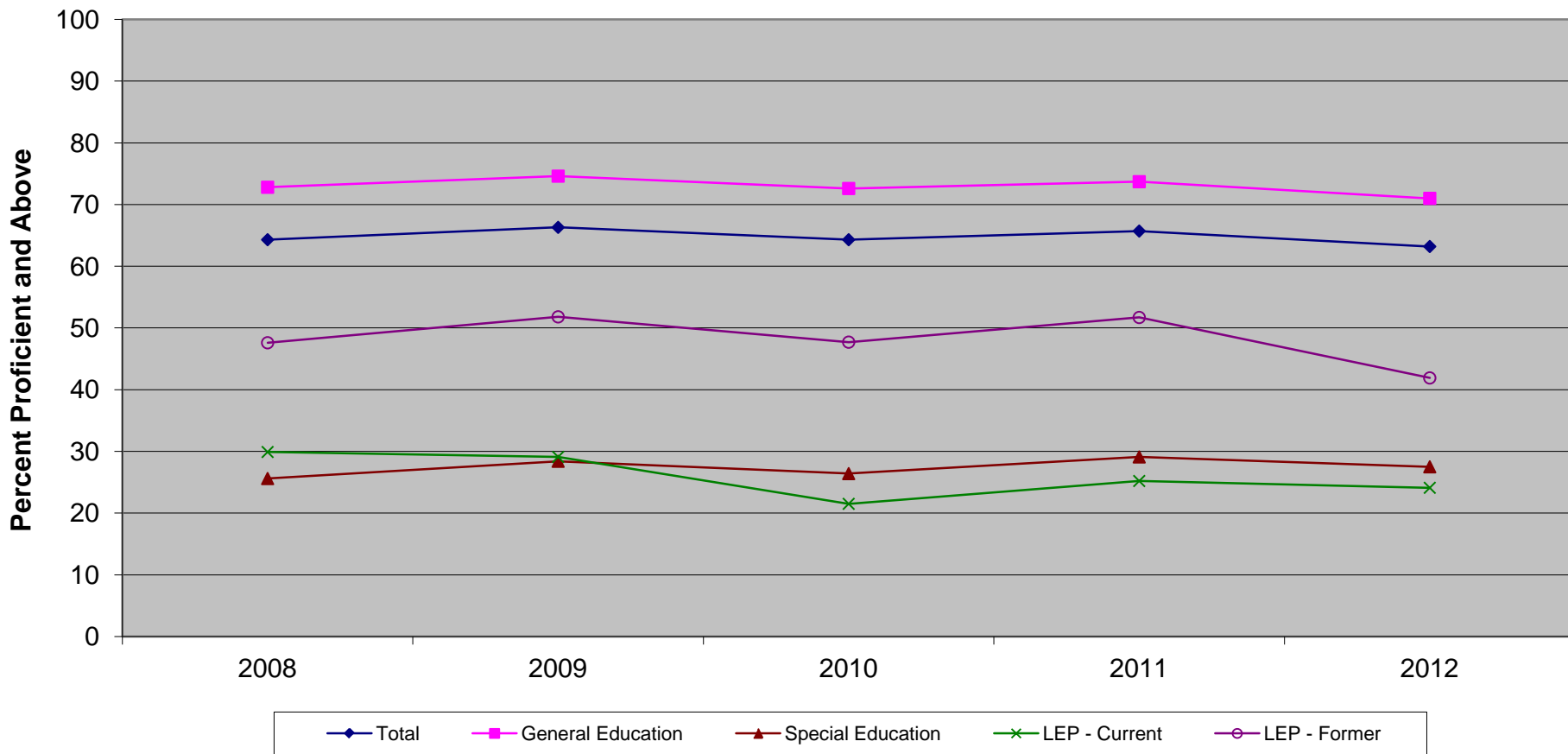
New Jersey Assessment of Skills and Knowledge
Grade 7 Language Arts Literacy Proficient and Above
by Instructional Group (2008 - 2012)



**New Jersey Assessment of Skills and Knowledge
Grade 7 Language Arts Literacy Proficient and Above
by Instructional Group (2008 - 2012)**

	2008	2009	2010	2011	2012
Total	70.3	71.9	69.2	63.3	61.0
General Education	79.5	80.7	78.1	72.0	69.6
Special Education	29.8	32.1	28.7	24.3	21.6
LEP - Current	22.0	26.6	16.2	12.4	14.4
LEP - Former	42.6	50.7	41.4	37.3	32.7

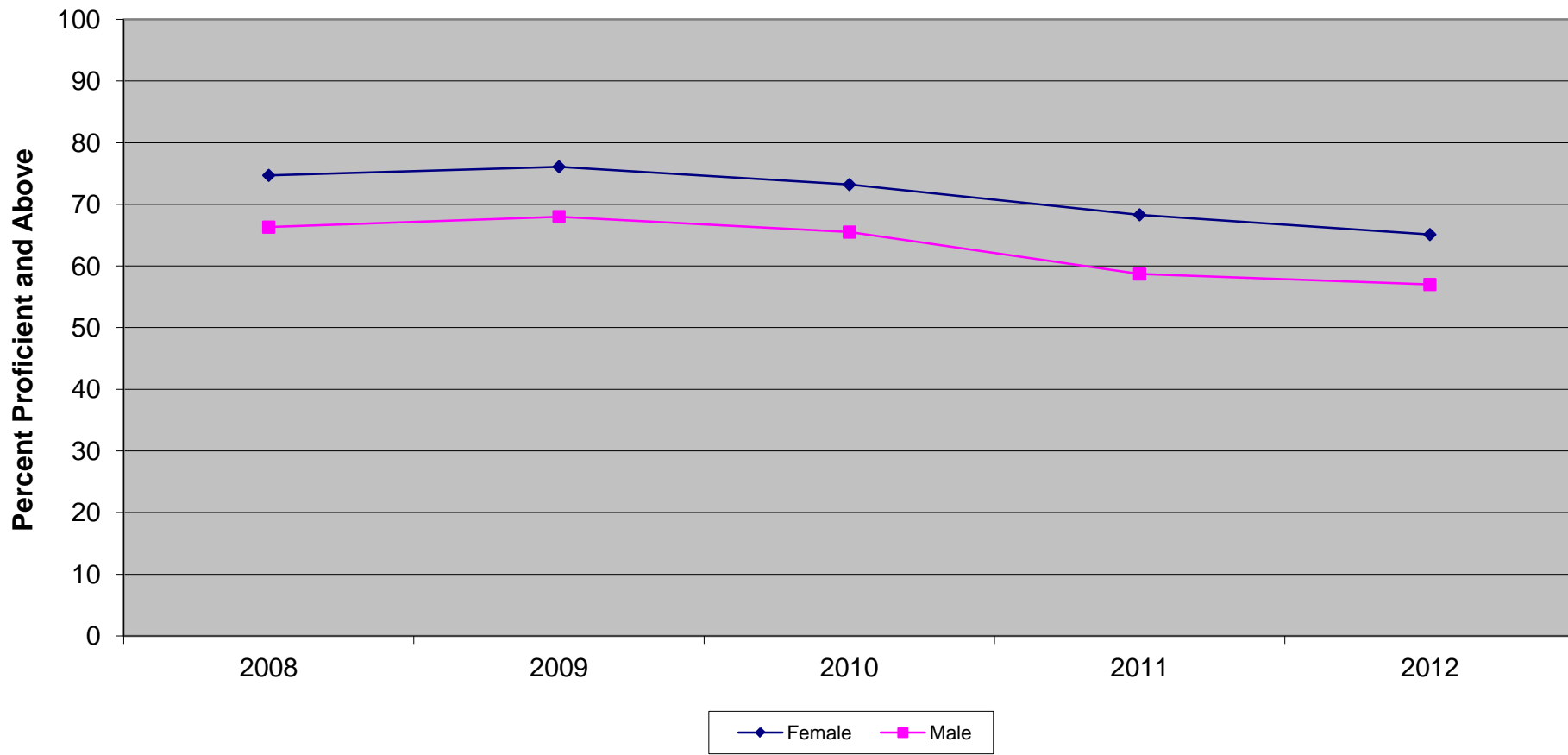
New Jersey Assessment of Skills and Knowledge
Grade 7 Mathematics Proficient and Above
by Instructional Group (2008 - 2012)



**New Jersey Assessment of Skills and Knowledge
Grade 7 Mathematics Proficient and Above
by Instructional Group (2008 - 2012)**

	2008	2009	2010	2011	2012
Total	64.3	66.3	64.3	65.7	63.2
General Education	72.8	74.6	72.6	73.7	71.0
Special Education	25.6	28.4	26.4	29.1	27.5
LEP - Current	29.9	29.1	21.5	25.2	24.1
LEP - Former	47.6	51.8	47.7	51.7	41.9

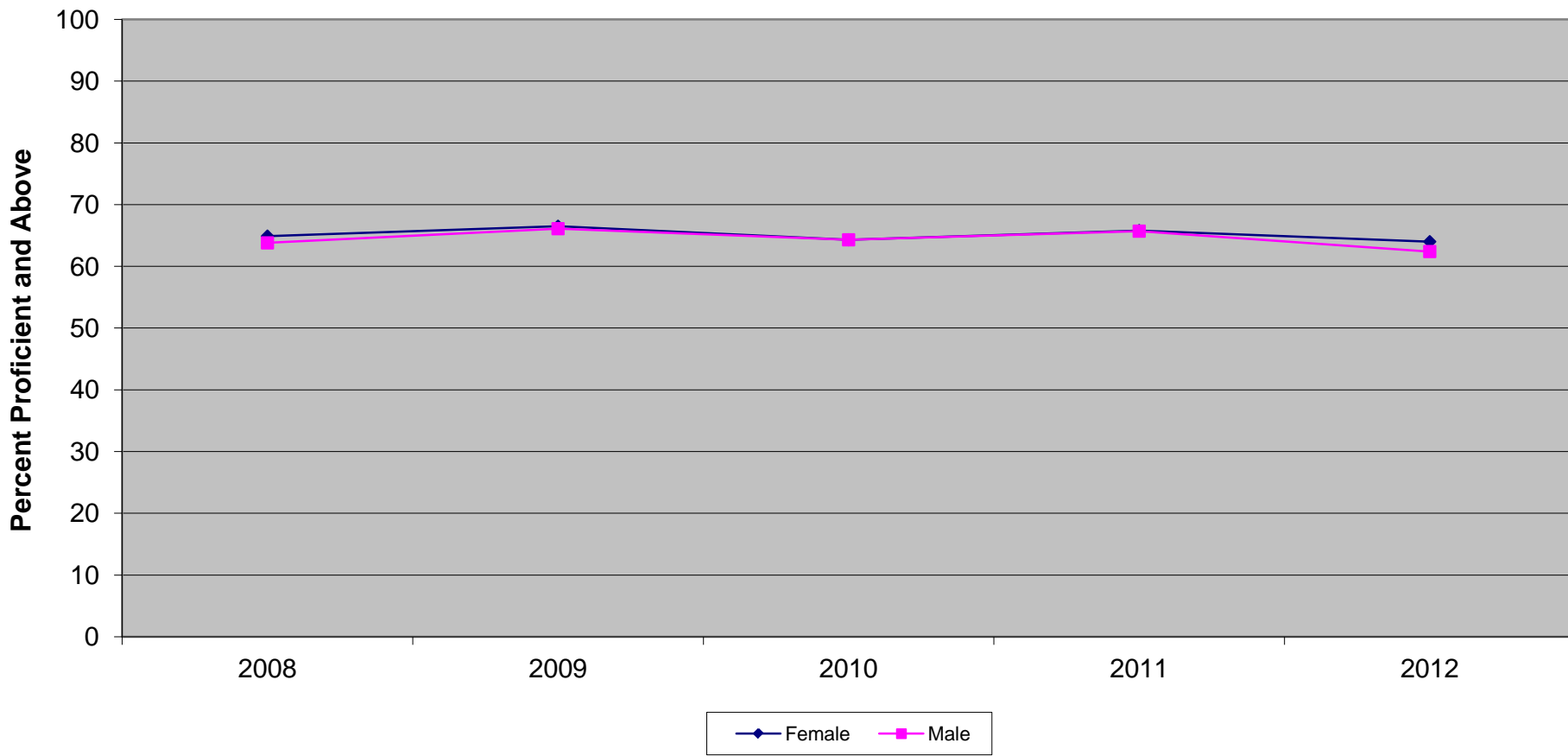
New Jersey Assessment of Skills and Knowledge
Grade 7 Language Arts Literacy Proficient and Above
by Gender (2008 - 2012)



**New Jersey Assessment of Skills and Knowledge
Grade 7 Language Arts Literacy Proficient and Above
by Gender (2008 - 2012)**

	2008	2009	2010	2011	2012
Female	74.7	76.1	73.2	68.3	65.1
Male	66.3	68.0	65.5	58.7	57.0

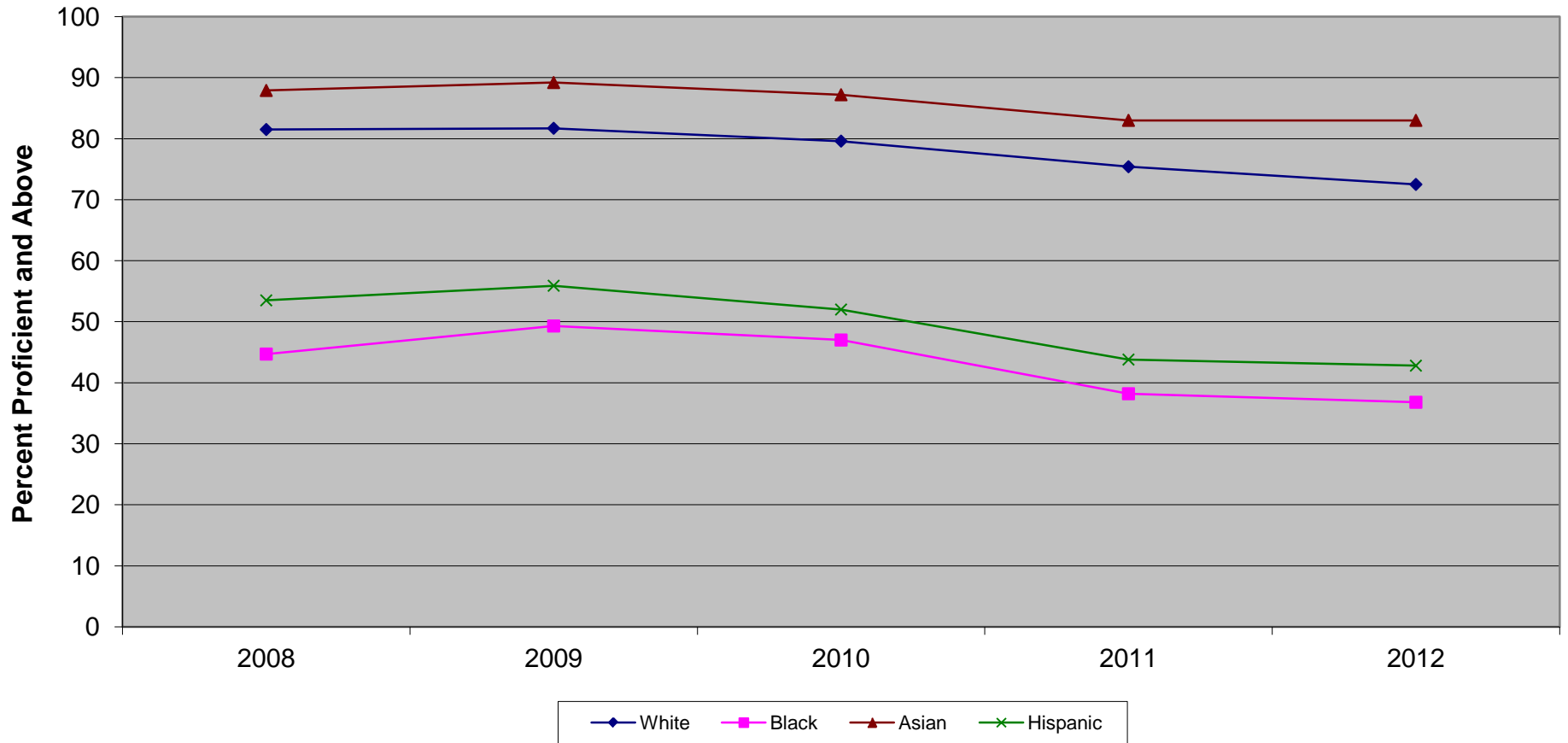
New Jersey Assessment of Skills and Knowledge
Grade 7 Mathematics Proficient and Above
by Gender (2008 - 2012)



**New Jersey Assessment of Skills and Knowledge
Grade 7 Mathematics Proficient and Above
by Gender (2008 - 2012)**

	2008	2009	2010	2011	2012
Female	64.9	66.5	64.3	65.8	64.0
Male	63.8	66.1	64.3	65.7	62.4

New Jersey Assessment of Skills and Knowledge
Grade 7 Language Arts Literacy Proficient and Above
by Ethnicity (2008 - 2012)

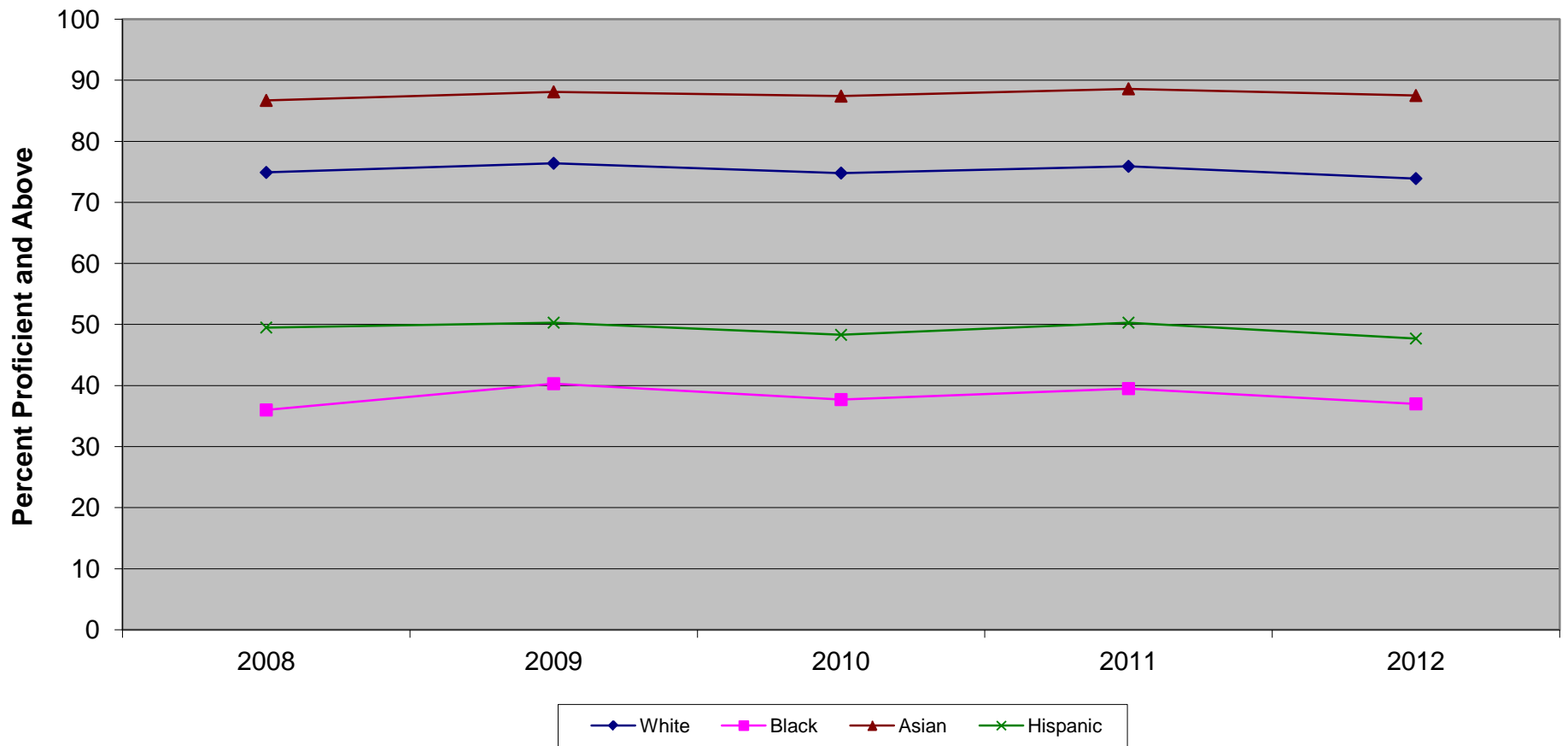


Ethnic codes Pacific Islander, American Indian/Alaskan Native and Other are not shown due to the small number of students in these categories.

**New Jersey Assessment of Skills and Knowledge
Grade 7 Language Arts Literacy Proficient and Above
by Ethnicity (2008 - 2012)**

	2008	2009	2010	2011	2012
White	81.5	81.7	79.6	75.4	72.5
Black	44.7	49.3	47.0	38.2	36.8
Asian	87.9	89.2	87.2	83.0	83.0
Hispanic	53.5	55.9	52.0	43.8	42.8

New Jersey Assessment of Skills and Knowledge
Grade 7 Mathematics Proficient and Above
by Ethnicity (2008 - 2012)

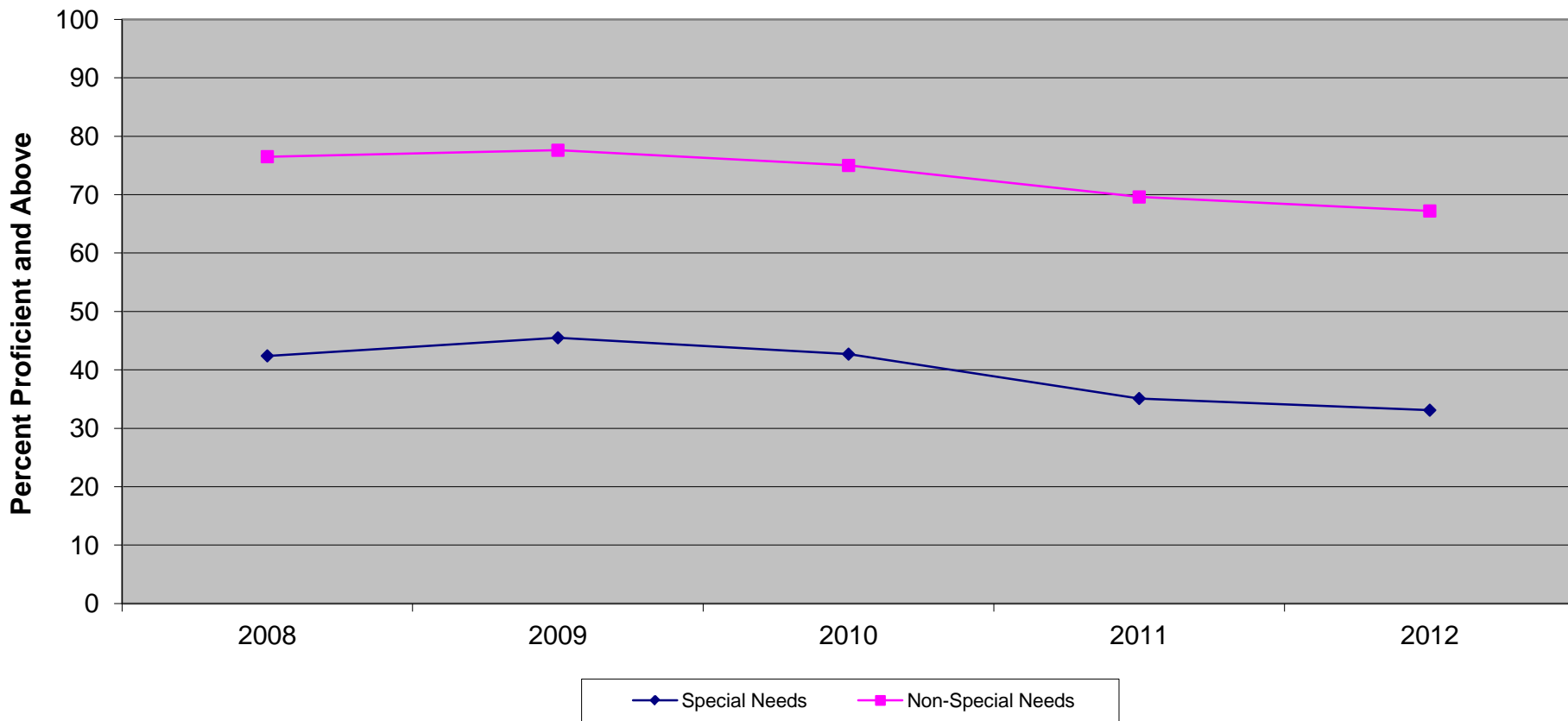


Ethnic codes Pacific Islander, American Indian/Alaskan Native and Other are not shown due to the small number of students in these categories.

**New Jersey Assessment of Skills and Knowledge
Grade 7 Mathematics Proficient and Above
by Ethnicity (2008 - 2012)**

	2008	2009	2010	2011	2012
White	74.9	76.4	74.8	75.9	73.9
Black	36.0	40.3	37.7	39.5	37.0
Asian	86.7	88.1	87.4	88.6	87.5
Hispanic	49.5	50.3	48.3	50.3	47.7

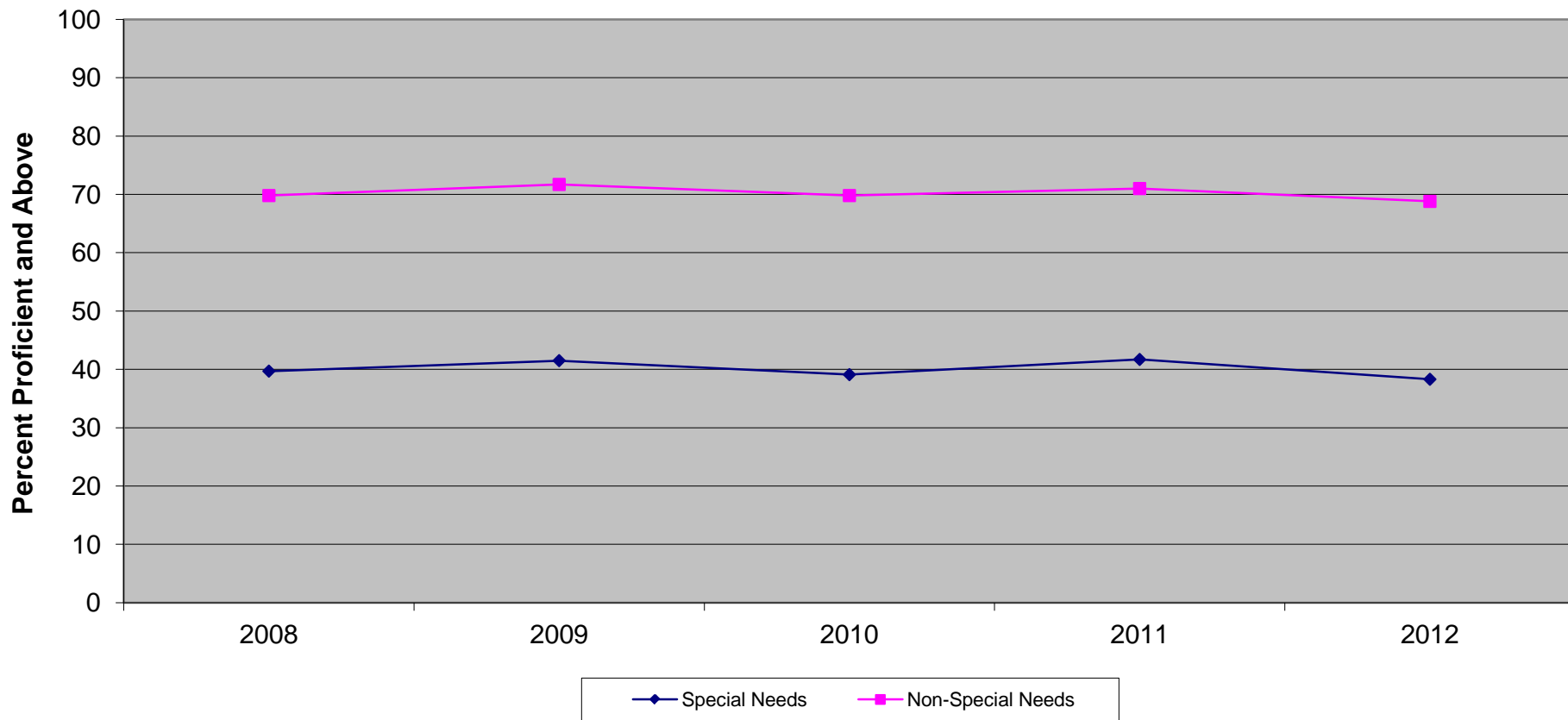
New Jersey Assessment of Skills and Knowledge
Grade 7 Language Arts Literacy Proficient and Above
Special Needs vs Non-Special Needs (2008 - 2012)



**New Jersey Assessment of Skills and Knowledge
Grade 7 Language Arts Literacy Proficient and Above
Special Needs vs Non-Special Needs (2008 - 2012)**

	2008	2009	2010	2011	2012
Special Needs	42.4	45.5	42.7	35.1	33.1
Non-Special Needs	76.5	77.6	75.0	69.6	67.2

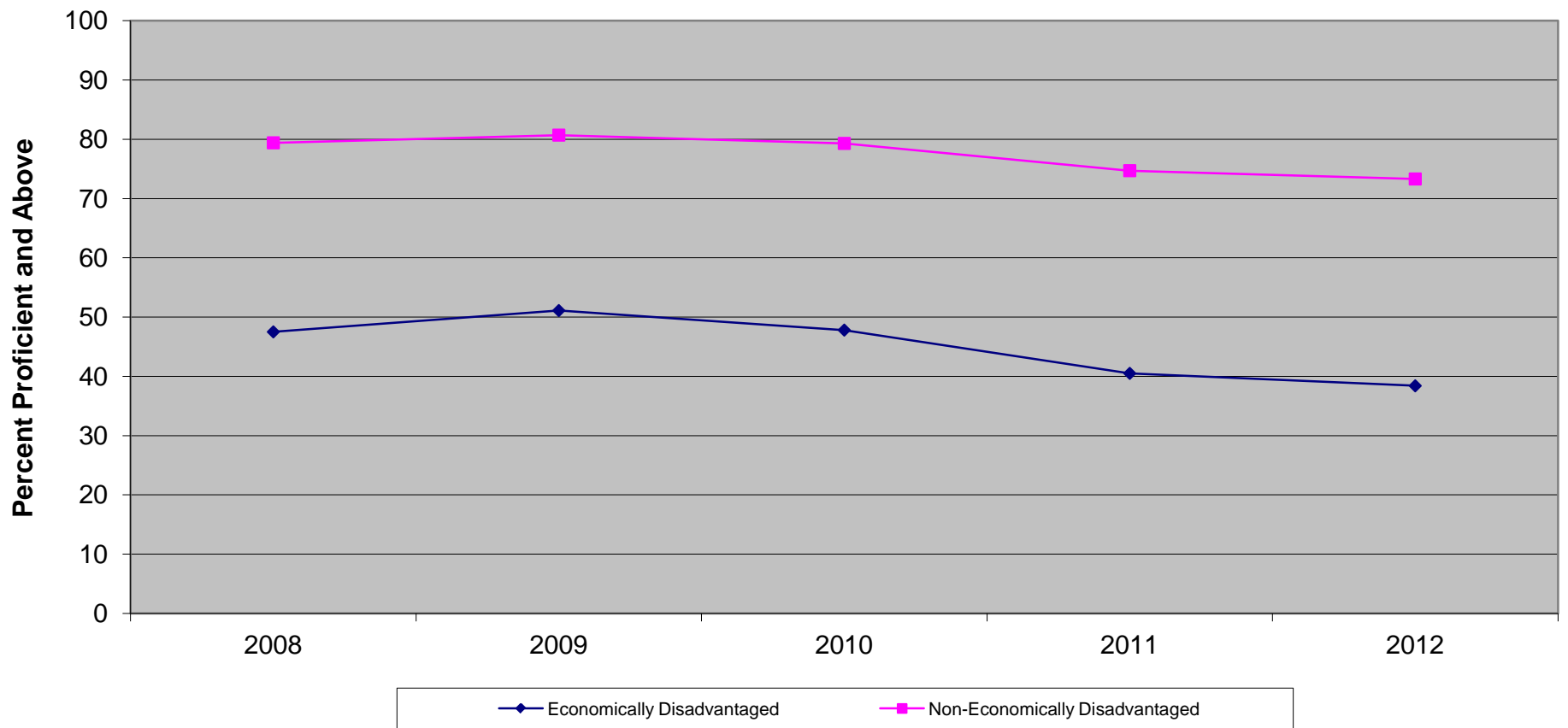
**New Jersey Assessment of Skills and Knowledge
Grade 7 Mathematics Proficient and Above
Special Needs vs Non-Special Needs (2008 - 2012)**



**New Jersey Assessment of Skills and Knowledge
Grade 7 Mathematics Proficient and Above
Special Needs vs Non-Special Needs (2008 - 2012)**

	2008	2009	2010	2011	2012
Special Needs	39.7	41.5	39.1	41.7	38.3
Non-Special Needs	69.8	71.7	69.8	71.0	68.8

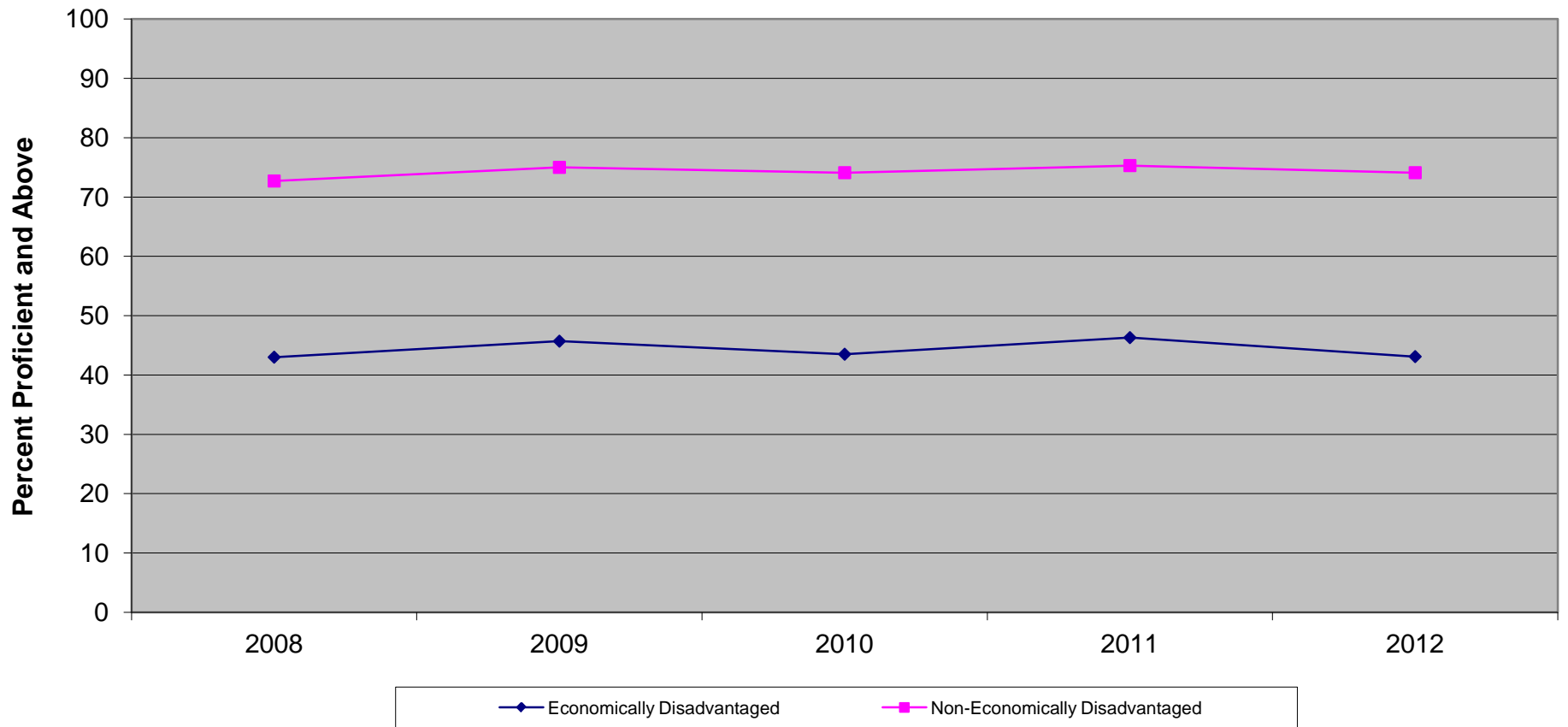
New Jersey Assessment of Skills and Knowledge
Grade 7 Language Arts Literacy Proficient and Above
Economically Disadvantaged vs Non-Economically Disadvantaged (2008 - 2012)



**New Jersey Assessment of Skills and Knowledge
Grade 7 Language Arts Literacy Proficient and Above
Economically Disadvantaged vs Non-Economically Disadvantaged (2008 - 2012)**

	2008	2009	2010	2011	2012
Economically Disadvantaged	47.5	51.1	47.8	40.5	38.4
Non-Economically Disadvantaged	79.4	80.7	79.3	74.7	73.3

New Jersey Assessment of Skills and Knowledge
Grade 7 Mathematics Proficient and Above
Economically Disadvantaged vs Non-Economically Disadvantaged (2008 - 2012)



**New Jersey Assessment of Skills and Knowledge
Grade 7 Mathematics Proficient and Above
Economically Disadvantaged vs Non-Economically Disadvantaged (2008 - 2012)**

	2008	2009	2010	2011	2012
Economically Disadvantaged	43.0	45.7	43.5	46.3	43.1
Non-Economically Disadvantaged	72.7	75.0	74.1	75.3	74.1