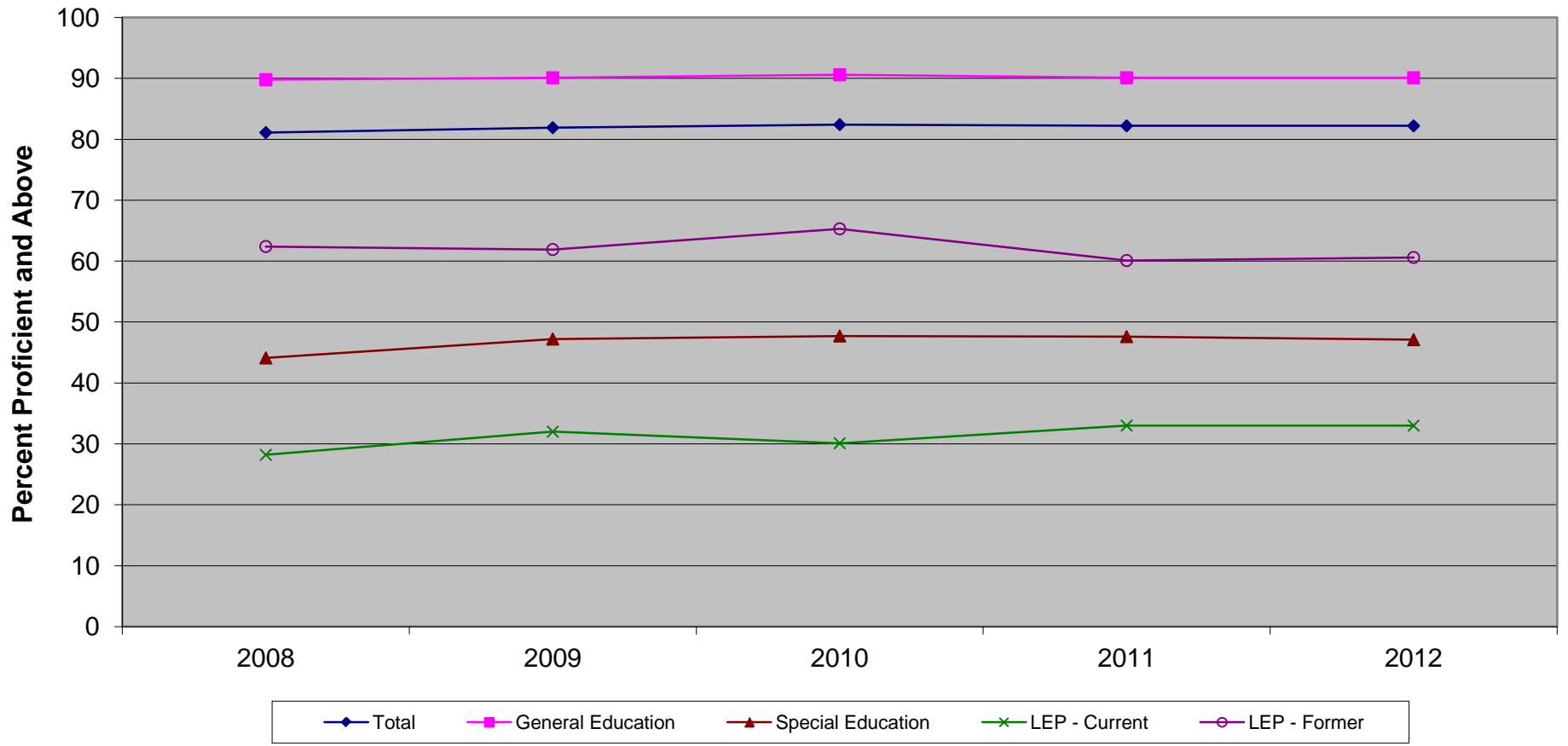


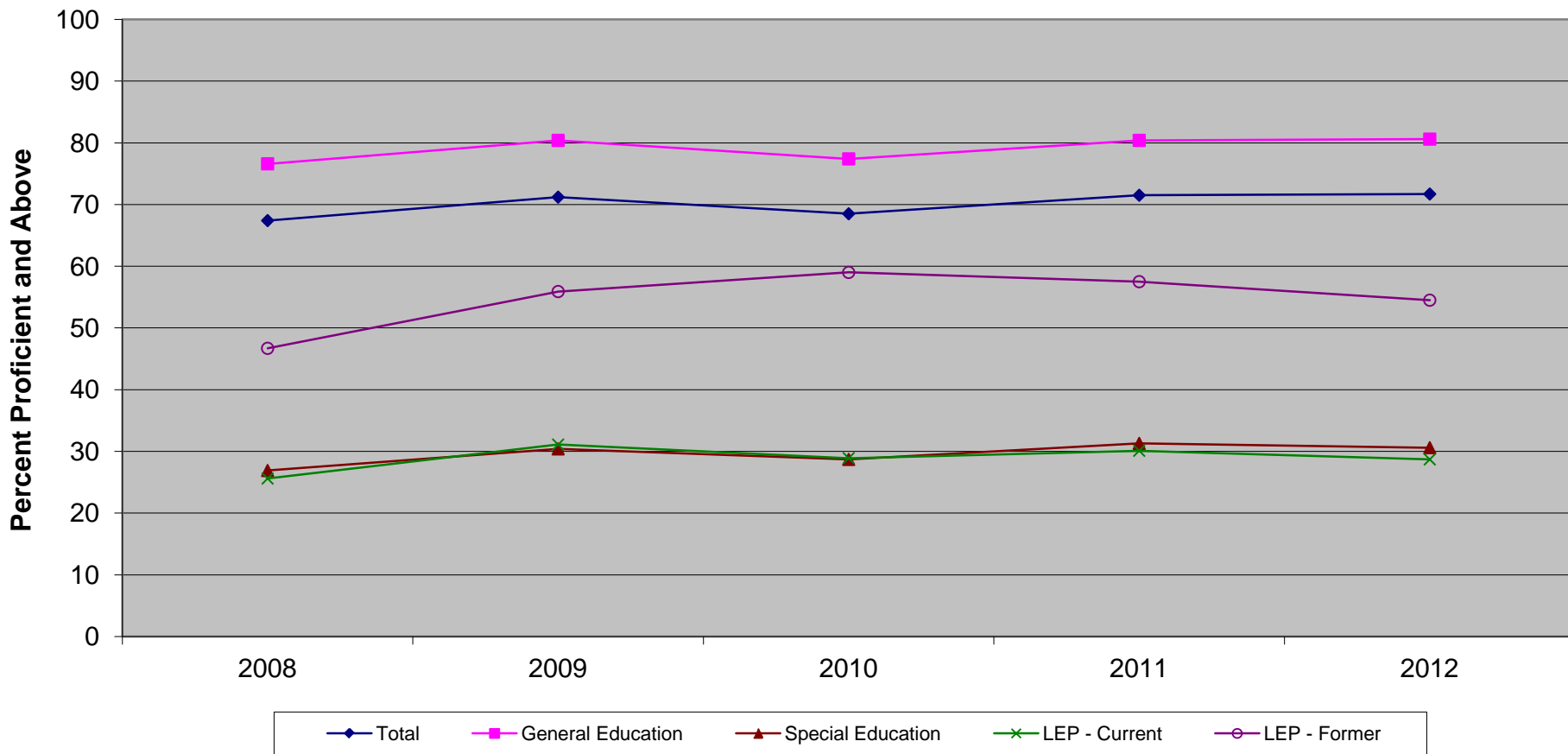
New Jersey Assessment of Skills and Knowledge
Grade 8 Language Arts Literacy Proficient and Above
by Instructional Group (2008-2012)



**New Jersey Assessment of Skills and Knowledge
Grade 8 Language Arts Literacy Proficient and Above
by Instructional Group (2008-2012)**

	2008	2009	2010	2011	2012
Total	81.1	81.9	82.4	82.2	82.2
General Education	89.8	90.1	90.6	90.1	90.1
Special Education	44.1	47.2	47.7	47.6	47.1
LEP - Current	28.2	32.0	30.1	33.0	33.0
LEP - Former	62.4	61.9	65.3	60.1	60.6

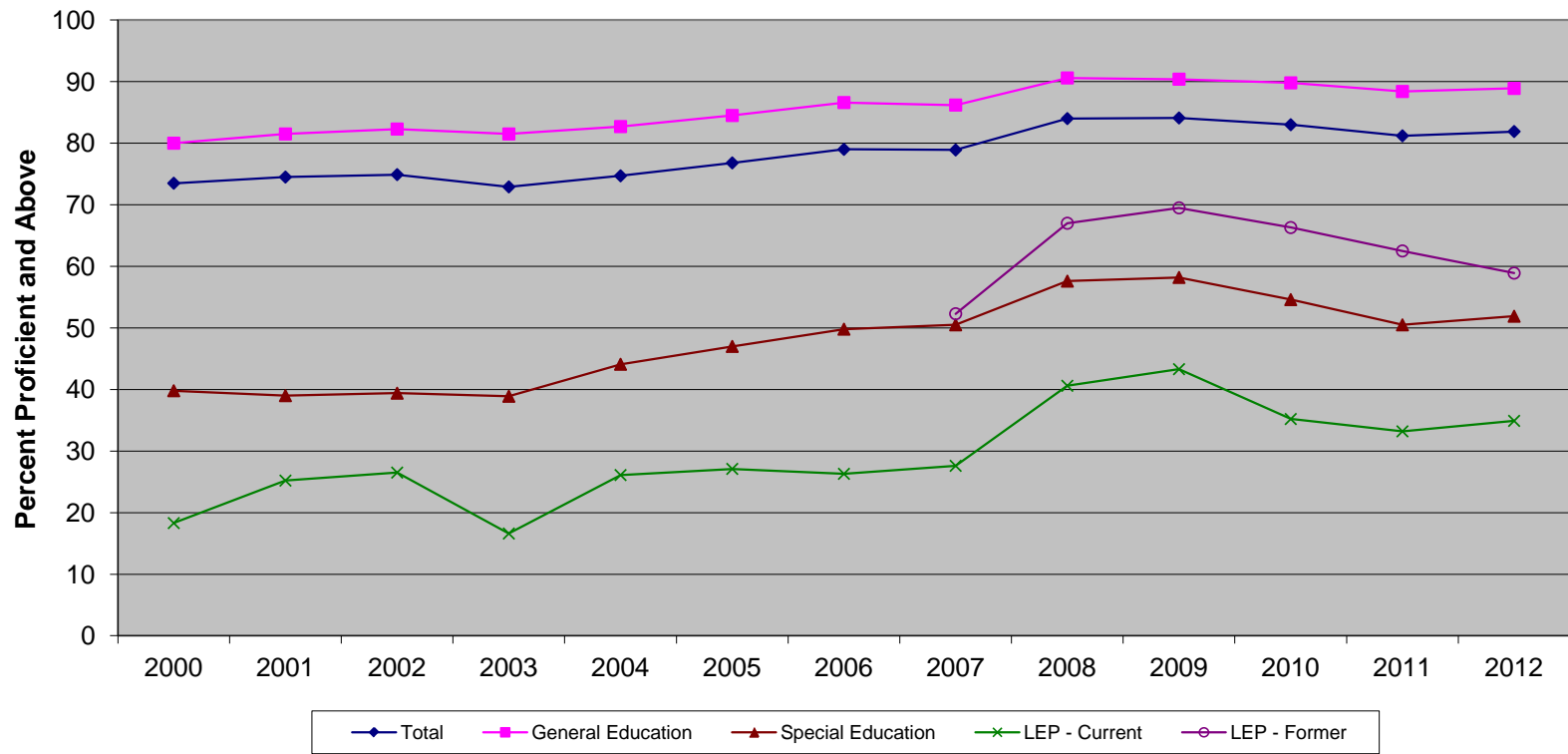
New Jersey Assessment of Skills and Knowledge
Grade 8 Mathematics Proficient and Above
by Instructional Group (2008-2012)



**New Jersey Assessment of Skills and Knowledge
Grade 8 Mathematics Proficient and Above
by Instructional Group (2008-2012)**

	2008	2009	2010	2011	2012
Total	67.4	71.2	68.5	71.5	71.7
General Education	76.6	80.4	77.4	80.4	80.6
Special Education	26.9	30.4	28.7	31.3	30.6
LEP - Current	25.6	31.1	28.9	30.1	28.7
LEP - Former	46.7	55.9	59.0	57.5	54.5

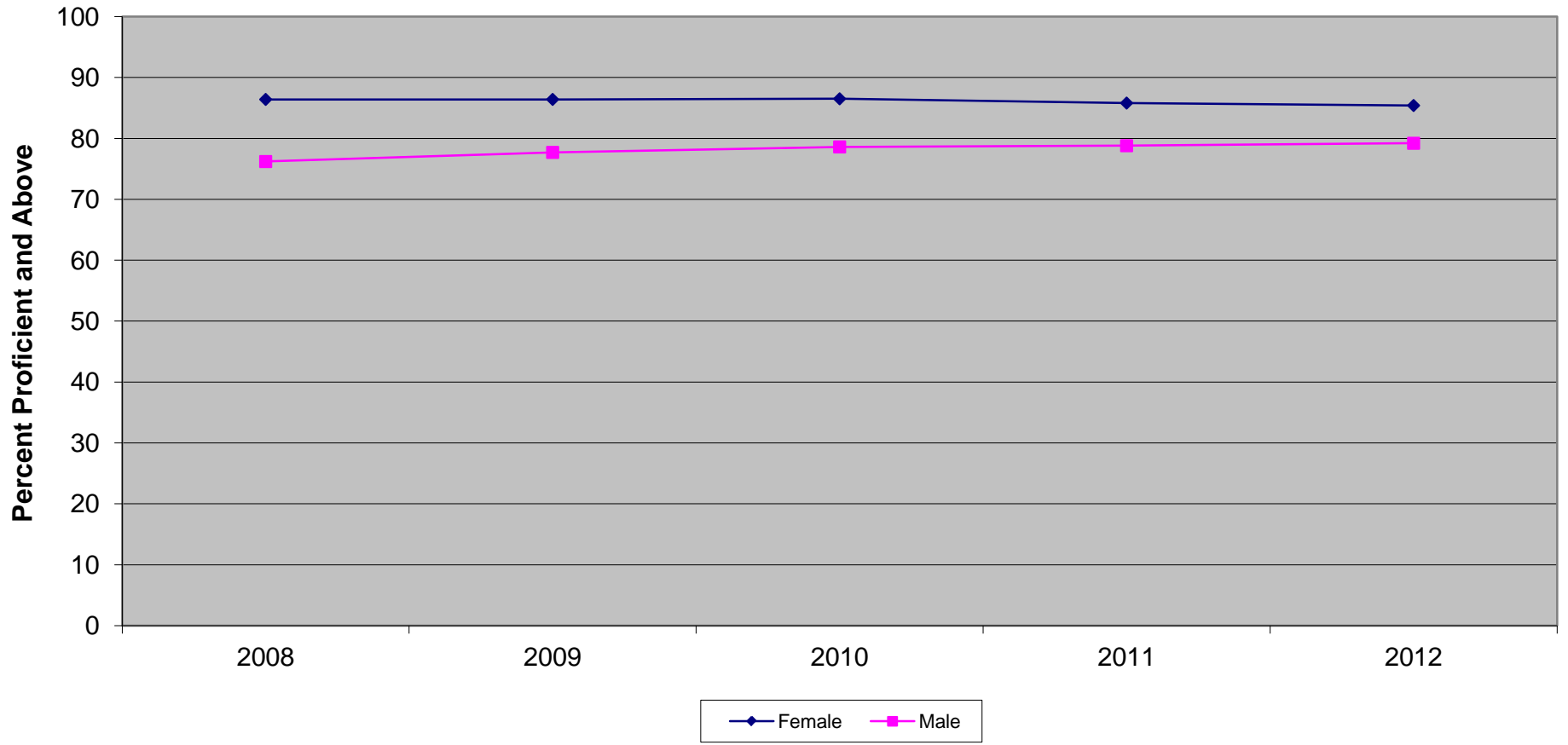
New Jersey Assessment of Skills and Knowledge
Grade 8 Science Proficient and Above
by Instructional Group (2000-2012)



**New Jersey Assessment of Skills and Knowledge
Grade 8 Science Proficient and Above
by Instructional Group (2000-2012)**

	2000	2001	2002	2003	2004	2005	2006	2007	2008	2009	2010	2011	2012
Total	73.5	74.5	74.9	72.9	74.7	76.8	79.0	78.9	84.0	84.1	83.0	81.2	81.9
General Education	80.0	81.5	82.3	81.5	82.7	84.5	86.6	86.2	90.6	90.4	89.8	88.4	88.9
Special Education	39.8	39.0	39.4	38.9	44.1	47.0	49.8	50.5	57.6	58.2	54.6	50.5	51.9
LEP - Current	18.3	25.2	26.5	16.6	26.1	27.1	26.3	27.6	40.6	43.3	35.2	33.2	34.9
LEP - Former								52.3	67.0	69.5	66.3	62.5	58.9

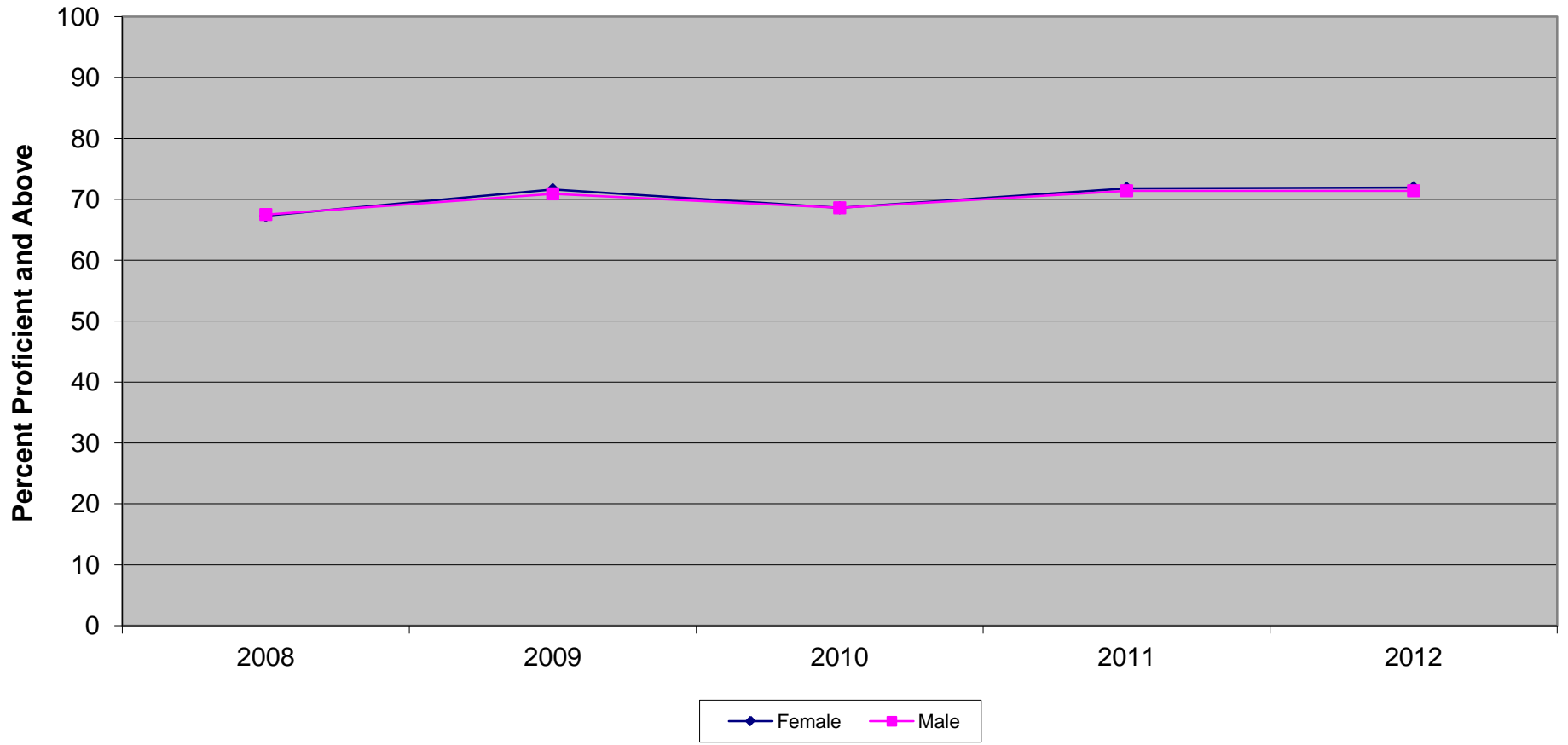
New Jersey Assessment of Skills and Knowledge
Grade 8 Language Arts Literacy Proficient and Above
by Gender (2008-2012)



**New Jersey Assessment of Skills and Knowledge
Grade 8 Language Arts Literacy Proficient and Above
by Gender (2008-2012)**

	2008	2009	2010	2011	2012
Female	86.4	86.4	86.5	85.8	85.4
Male	76.2	77.7	78.6	78.8	79.2

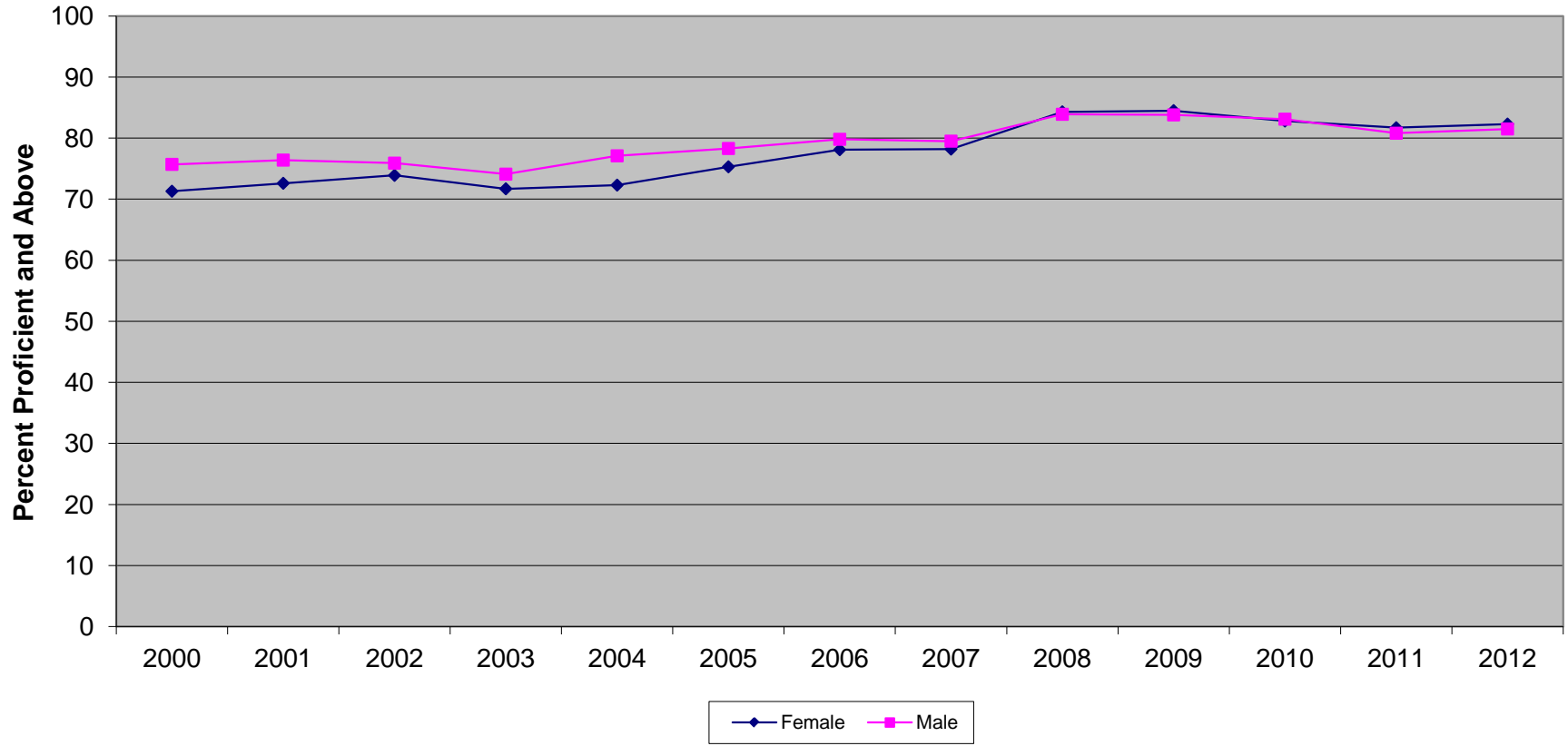
New Jersey Assessment of Skills and Knowledge
Grade 8 Mathematics Proficient and Above
by Gender (2008-2012)



**New Jersey Assessment of Skills and Knowledge
Grade 8 Mathematics Proficient and Above
by Gender (2008-2012)**

	2008	2009	2010	2011	2012
Female	67.3	71.6	68.6	71.8	71.9
Male	67.5	70.9	68.6	71.4	71.4

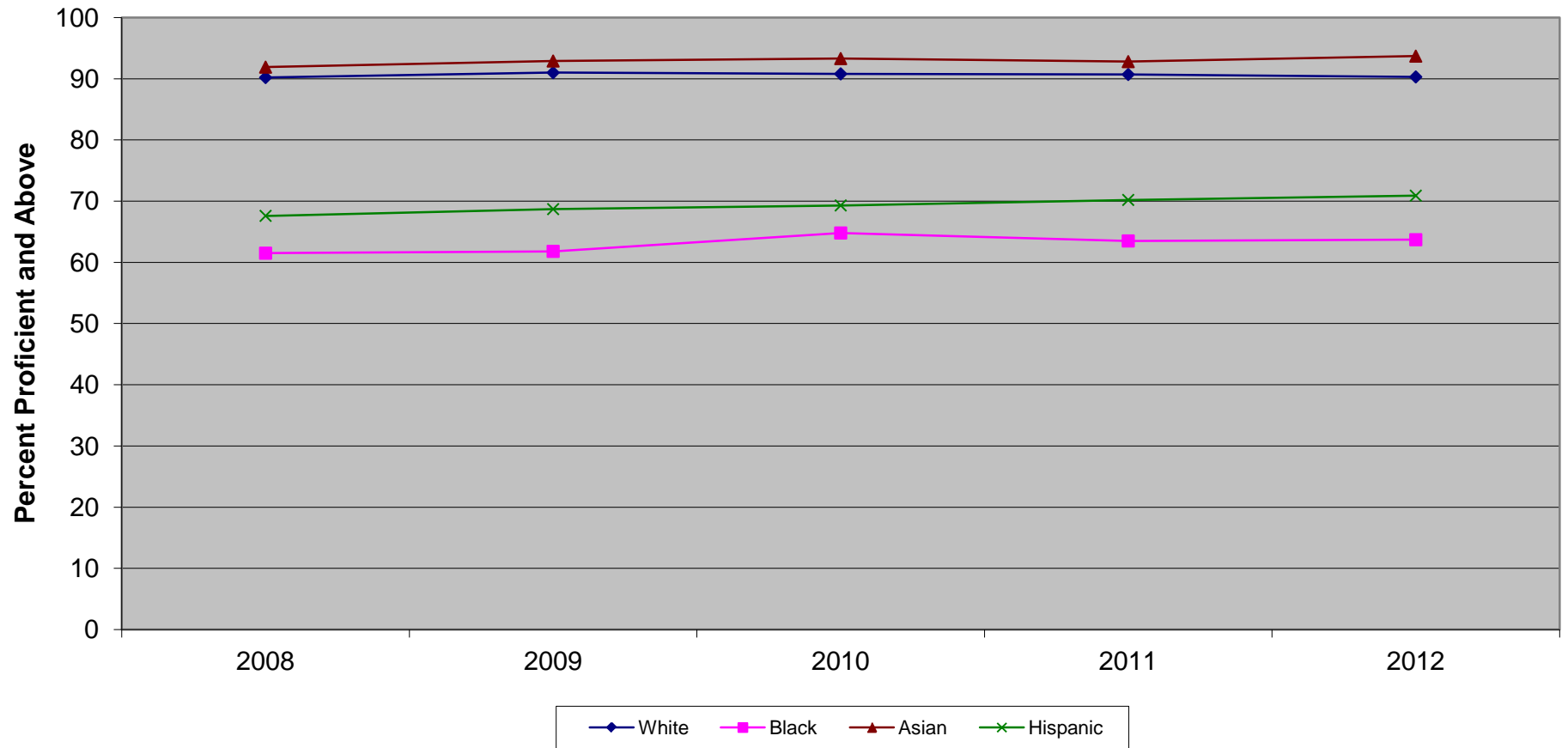
New Jersey Assessment of Skills and Knowledge
Grade 8 Science Proficient and Above
by Gender (2000-2012)



**New Jersey Assessment of Skills and Knowledge
Grade 8 Science Proficient and Above
by Gender (2000-2012)**

	2000	2001	2002	2003	2004	2005	2006	2007	2008	2009	2010	2011	2012
Female	71.3	72.6	73.9	71.7	72.3	75.3	78.1	78.2	84.3	84.5	82.8	81.7	82.3
Male	75.7	76.4	75.9	74.1	77.1	78.3	79.8	79.5	83.9	83.8	83.1	80.8	81.5

New Jersey Assessment of Skills and Knowledge
Grade 8 Language Arts Literacy Proficient and Above
by Ethnicity (2008-2012)

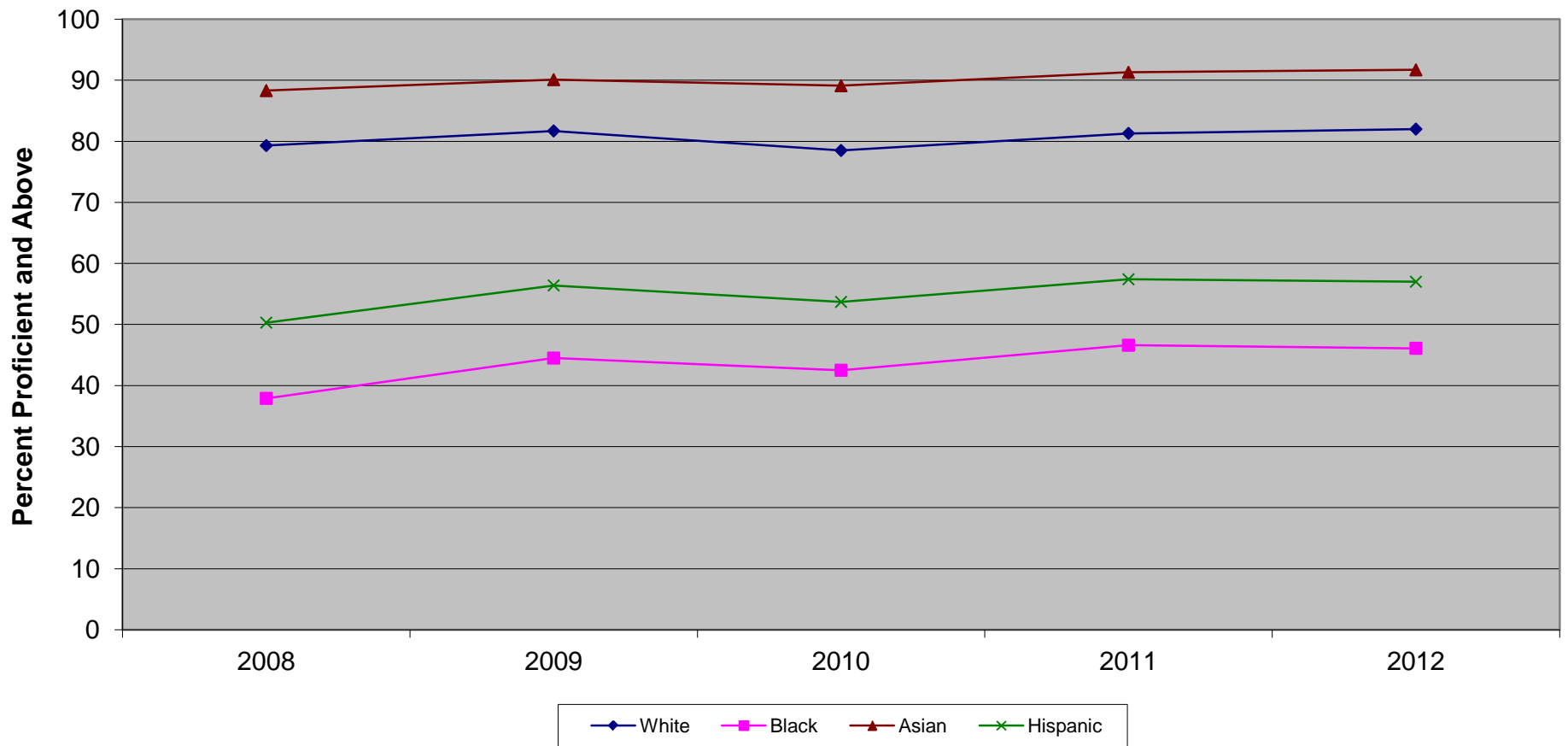


Ethnic codes Pacific Islander, American Indian/Alaskan Native and Other are not shown due to the small number of students in these categories.

**New Jersey Assessment of Skills and Knowledge
Grade 8 Language Arts Literacy Proficient and Above
by Ethnicity (2008-2012)**

	2008	2009	2010	2011	2012
White	90.2	91.0	90.8	90.7	90.3
Black	61.5	61.8	64.8	63.5	63.7
Asian	91.9	92.9	93.3	92.8	93.7
Hispanic	67.6	68.7	69.3	70.2	70.9

New Jersey Assessment of Skills and Knowledge
Grade 8 Mathematics Proficient and Above
by Ethnicity (2008-2012)

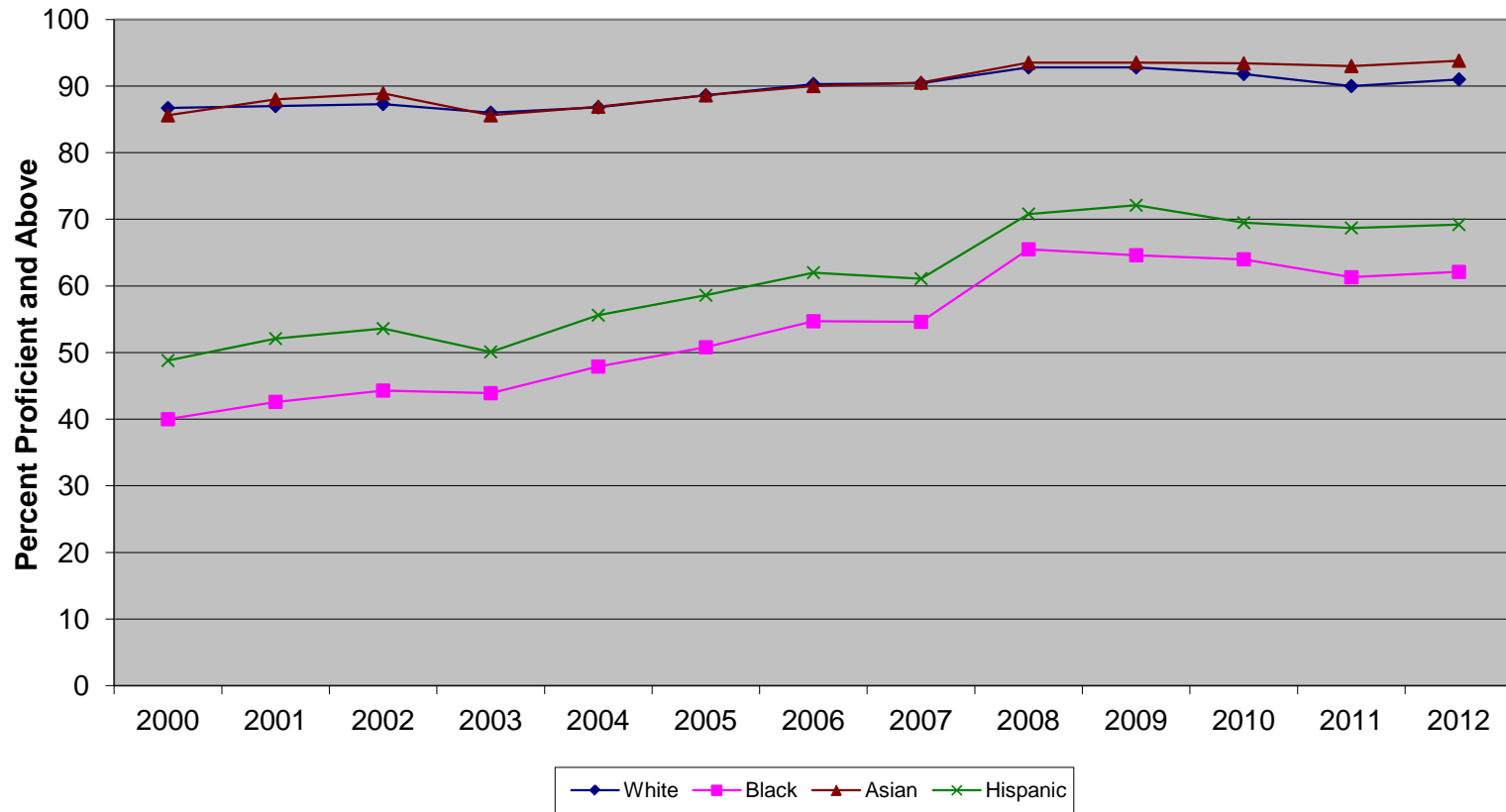


Ethnic codes Pacific Islander, American Indian/Alaskan Native and Other are not shown due to the small number of students in these categories.

**New Jersey Assessment of Skills and Knowledge
Grade 8 Mathematics Proficient and Above
by Ethnicity (2008-2012)**

	2008	2009	2010	2011	2012
White	79.3	81.7	78.5	81.3	82.0
Black	37.9	44.5	42.5	46.6	46.1
Asian	88.3	90.1	89.1	91.3	91.7
Hispanic	50.3	56.4	53.7	57.4	57.0

New Jersey Assessment of Skills and Knowledge
Grade 8 Science Proficient and Above by Ethnicity (2000-2012)

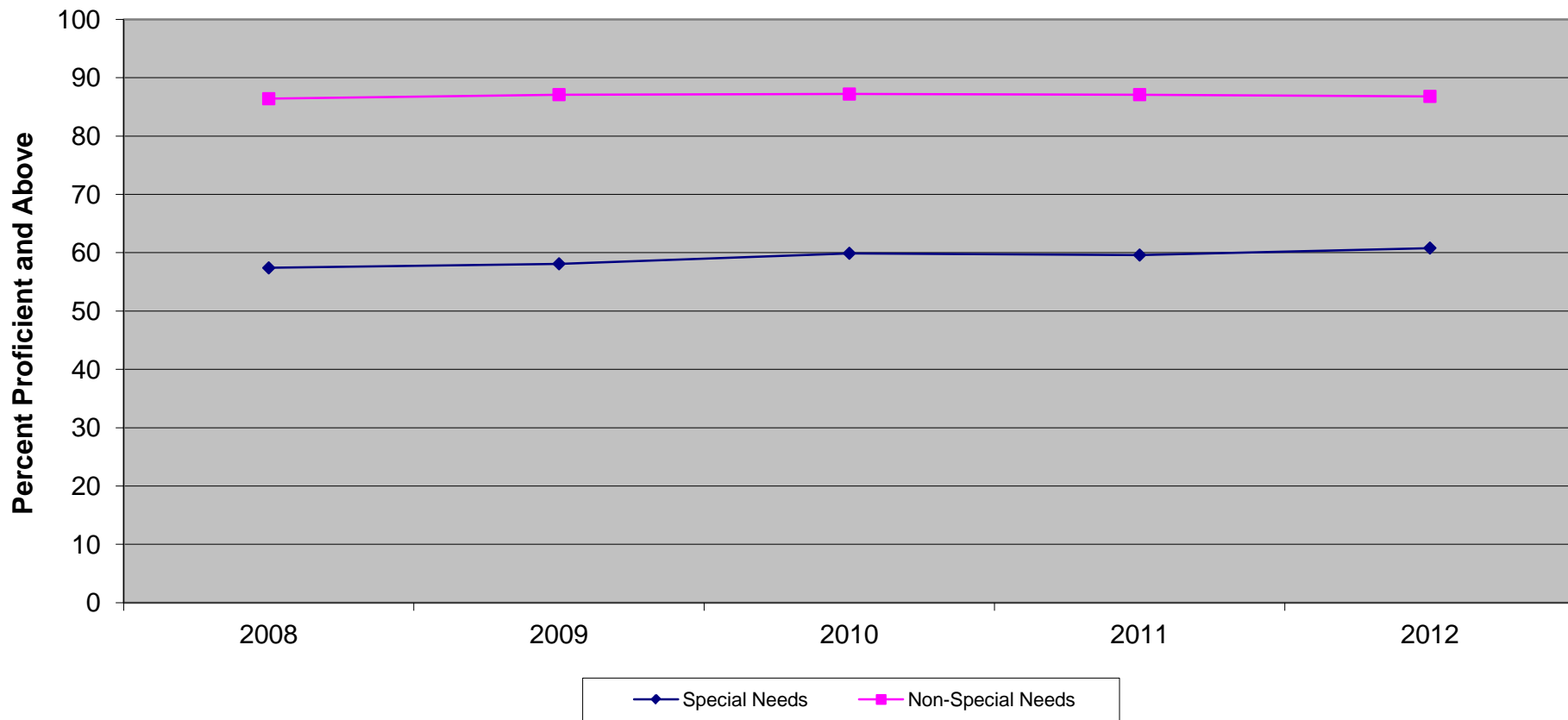


Ethnic codes Pacific Islander, American Indian/Alaskan Native and Other are not shown due to the small number of students in these categories.

**New Jersey Assessment of Skills and Knowledge
Grade 8 Science Proficient and Above
by Ethnicity (2000-2012)**

	2000	2001	2002	2003	2004	2005	2006	2007	2008	2009	2010	2011	2012
White	86.7	87.0	87.3	86.0	86.8	88.6	90.3	90.4	92.8	92.8	91.8	90.0	91.0
Black	40.0	42.6	44.3	43.9	47.9	50.8	54.7	54.6	65.5	64.6	64.0	61.3	62.1
Asian	85.6	88.0	88.9	85.6	86.9	88.6	90.0	90.5	93.5	93.5	93.4	93.0	93.8
Hispanic	48.8	52.1	53.6	50.1	55.6	58.6	62.0	61.1	70.8	72.1	69.5	68.7	69.2

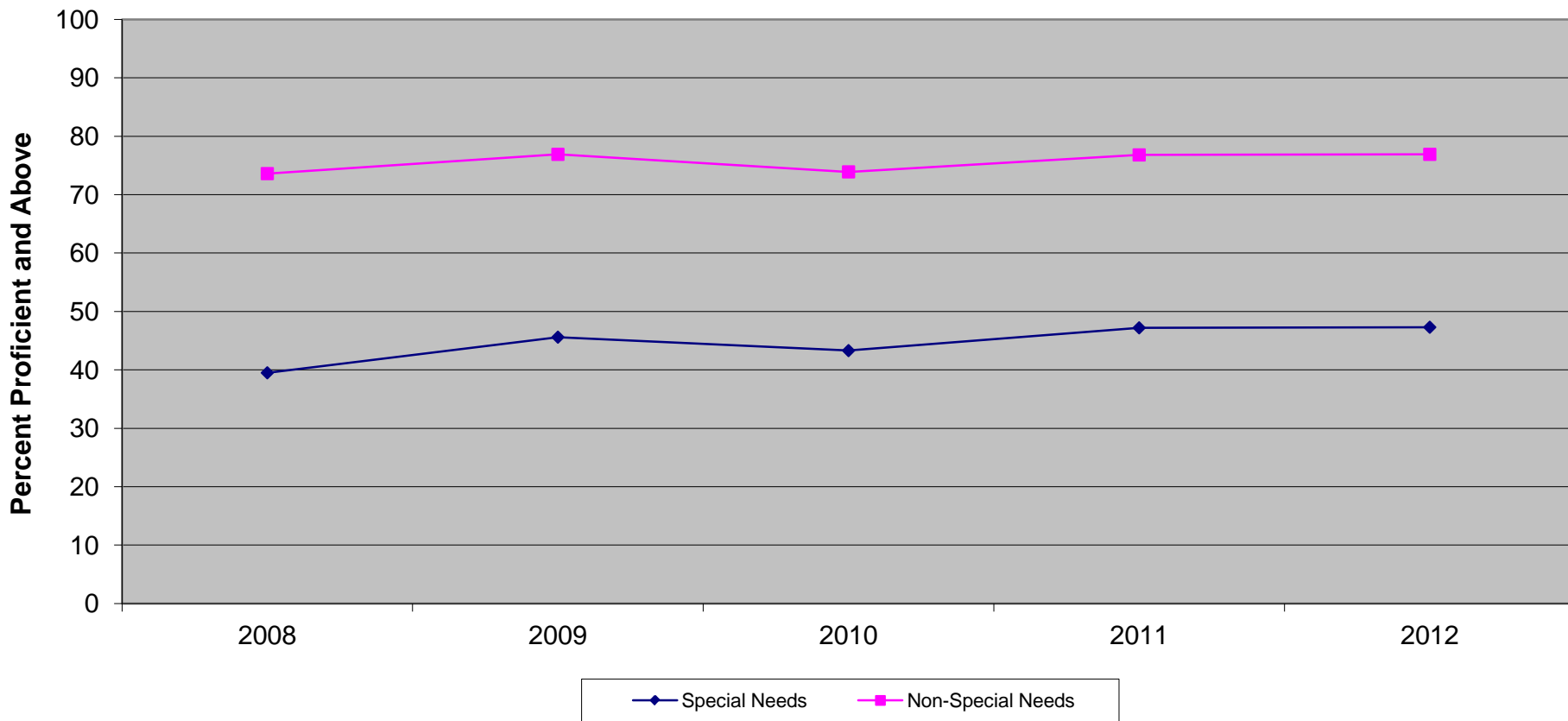
**New Jersey Assessment of Skills and Knowledge
Grade 8 Language Arts Literacy Proficient and Above
Special Needs vs Non-Special Needs (2008-2012)**



**New Jersey Assessment of Skills and Knowledge
Grade 8 Language Arts Literacy Proficient and Above
Special Needs vs Non-Special Needs (2008-2012)**

	2008	2009	2010	2011	2012
Special Needs	57.4	58.1	59.9	59.6	60.8
Non-Special Needs	86.4	87.1	87.2	87.1	86.8

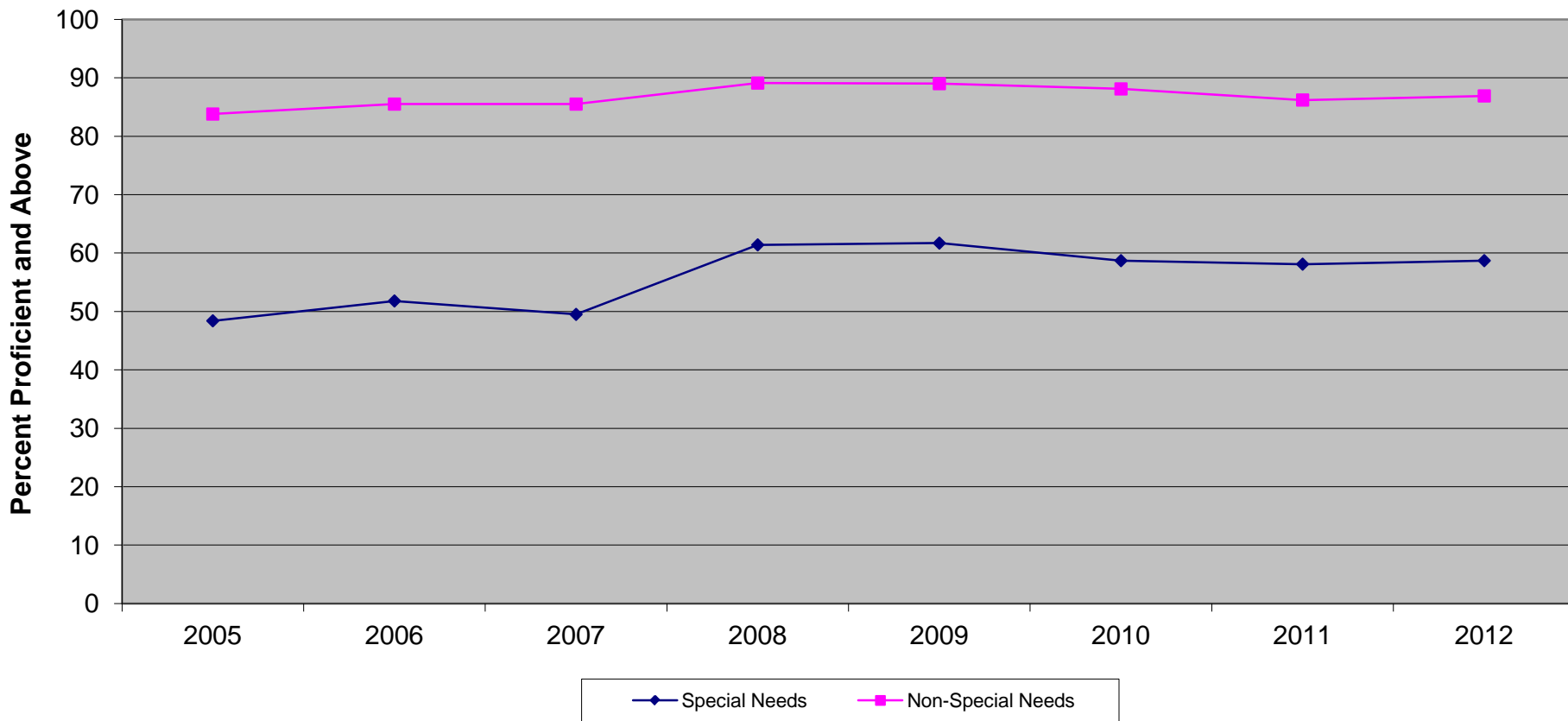
**New Jersey Assessment of Skills and Knowledge
Grade 8 Mathematics Proficient and Above
Special Needs vs Non-Special Needs (2008-2012)**



**New Jersey Assessment of Skills and Knowledge
Grade 8 Mathematics Proficient and Above
Special Needs vs Non-Special Needs (2008-2012)**

	2008	2009	2010	2011	2012
Special Needs	39.5	45.6	43.3	47.2	47.3
Non-Special Needs	73.6	76.9	73.9	76.8	76.9

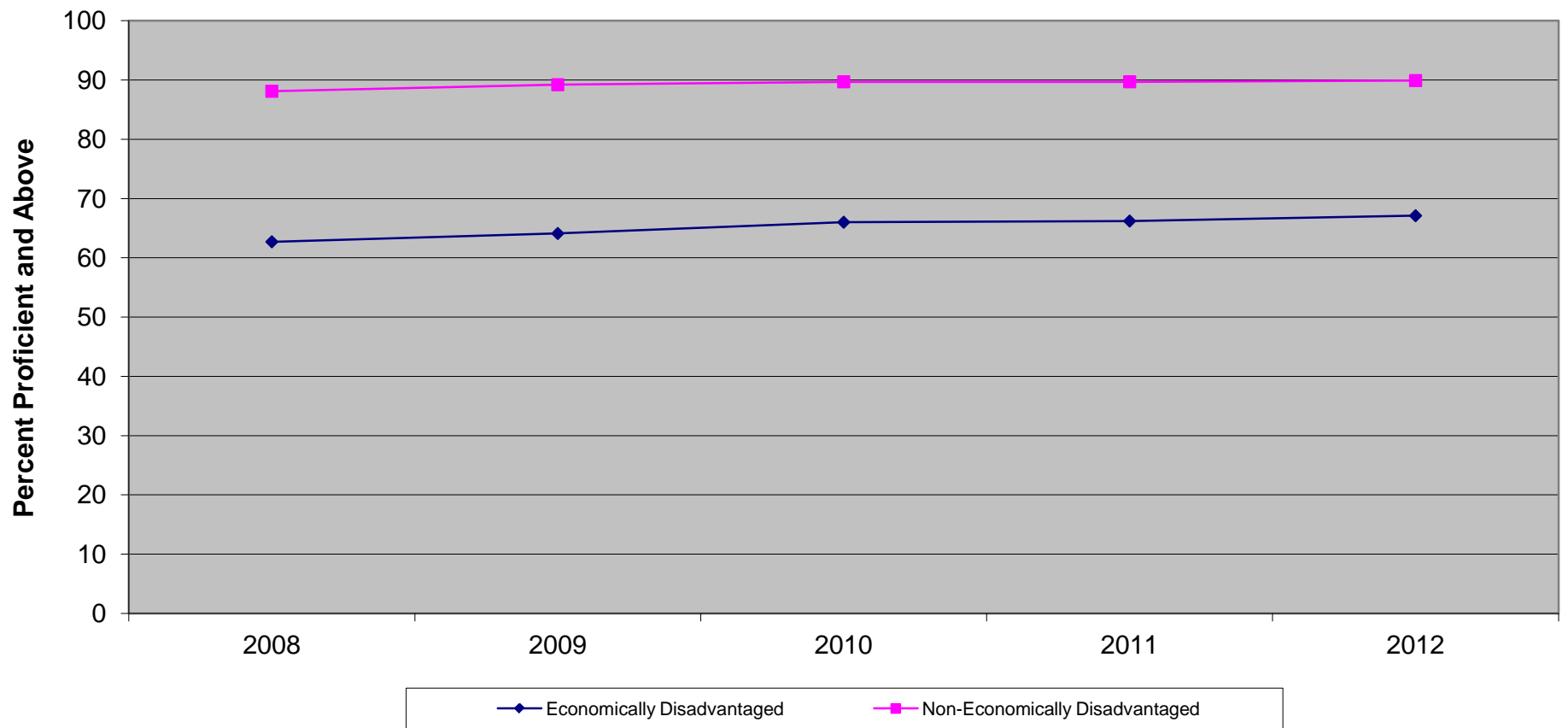
**New Jersey Assessment of Skills and Knowledge
Grade 8 Science Proficient and Above
Special Needs vs Non-Special Needs (2005-2012)**



**New Jersey Assessment of Skills and Knowledge
Grade 8 Science Proficient and Above
Special Needs vs Non-Special Needs (2005-2012)**

	2005	2006	2007	2008	2009	2010	2011	2012
Special Needs	48.4	51.8	49.5	61.4	61.7	58.7	58.1	58.7
Non-Special Needs	83.8	85.5	85.5	89.1	89	88.1	86.2	86.9

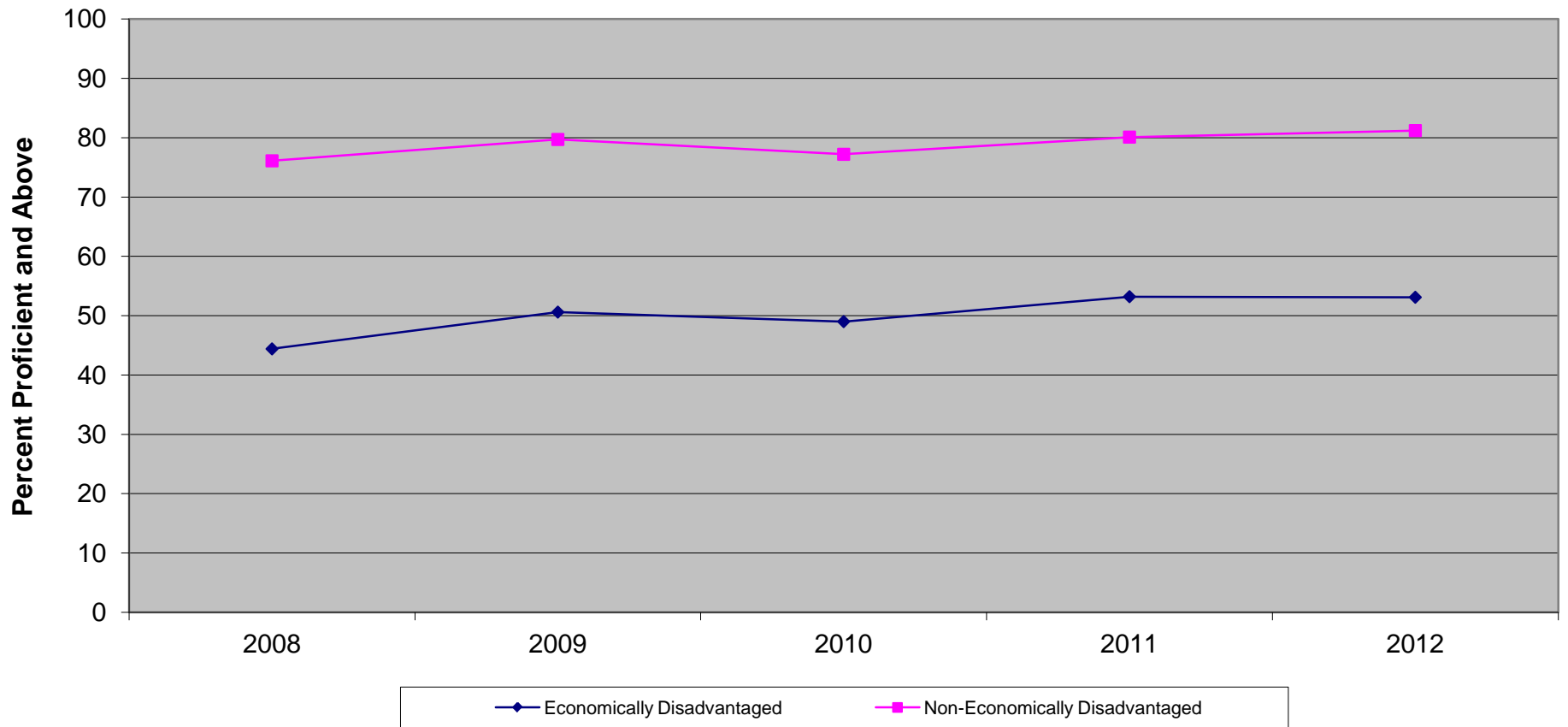
New Jersey Assessment of Skills and Knowledge
Grade 8 Language Arts Literacy Proficient and Above
Economically Disadvantaged vs Non-Economically Disadvantaged (2008-2012)



**New Jersey Assessment of Skills and Knowledge
Grade 8 Language Arts Literacy Proficient and Above
Economically Disadvantaged vs Non-Economically Disadvantaged (2008-2012)**

	2008	2009	2010	2011	2012
Economically Disadvantaged	62.7	64.1	66.0	66.2	67.1
Non-Economically Disadvantaged	88.1	89.2	89.7	89.7	89.9

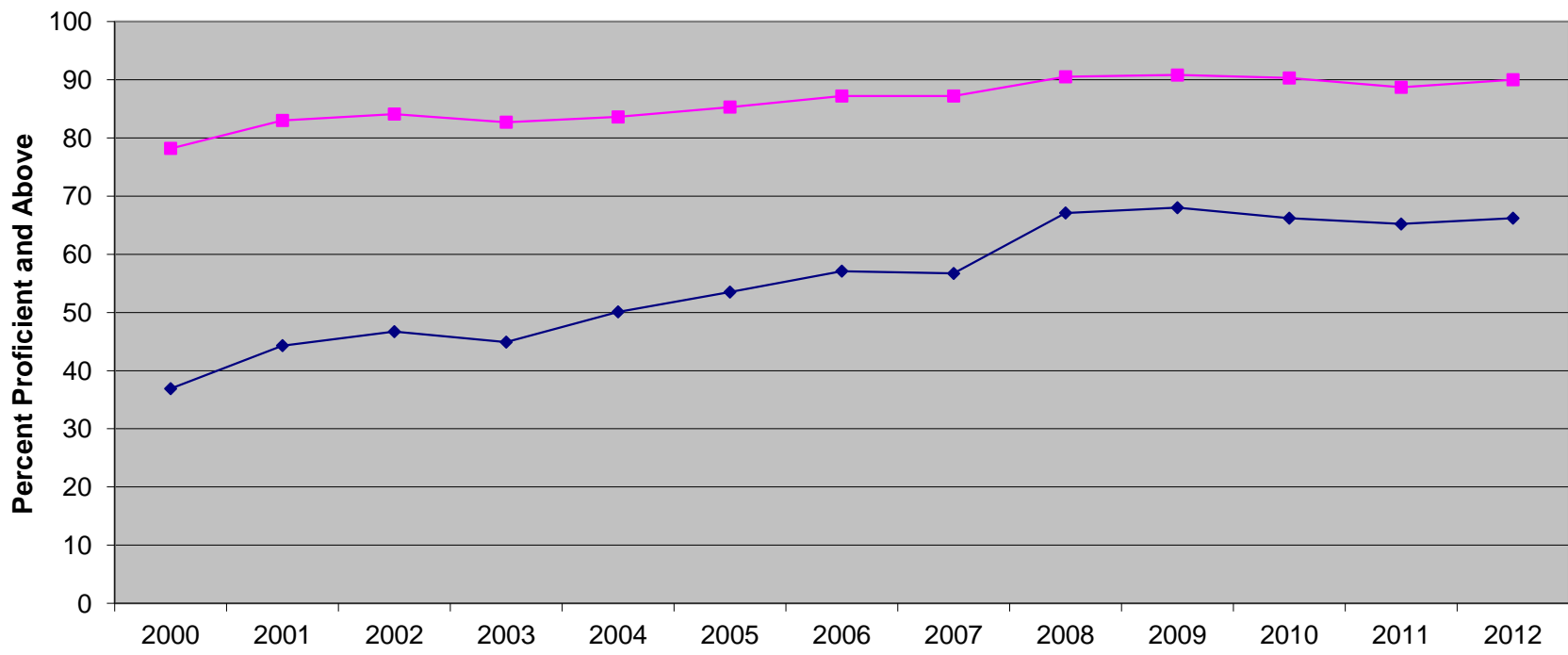
New Jersey Assessment of Skills and Knowledge
Grade 8 Mathematics Proficient and Above
Economically Disadvantaged vs Non-Economically Disadvantaged (2008-2012)



**New Jersey Assessment of Skills and Knowledge
Grade 8 Mathematics Proficient and Above
Economically Disadvantaged vs Non-Economically Disadvantaged (2008-2012)**

	2008	2009	2010	2011	2012
Economically Disadvantaged	44.4	50.6	49.0	53.2	53.1
Non-Economically Disadvantaged	76.1	79.7	77.2	80.1	81.2

**New Jersey Assessment of Skills and Knowledge
Grade 8 Science Proficient and Above
Economically Disadvantaged vs Non-Economically Disadvantaged (2000-2012)**



◆ Economically Disadvantaged ■ Non-Economically Disadvantaged

**New Jersey Assessment of Skills and Knowledge
Grade 8 Science Proficient and Above
Economically Disadvantaged vs Non-Economically Disadvantaged (2000-2012)**

	2000	2001	2002	2003	2004	2005	2006	2007	2008	2009	2010	2011	2012
Economically Disadvantaged	36.9	44.3	46.7	44.9	50.1	53.5	57.1	56.7	67.1	68.0	66.2	65.2	66.2
Non-Economically Disadvantaged	78.2	83.0	84.1	82.7	83.6	85.3	87.2	87.2	90.5	90.8	90.3	88.7	90.0