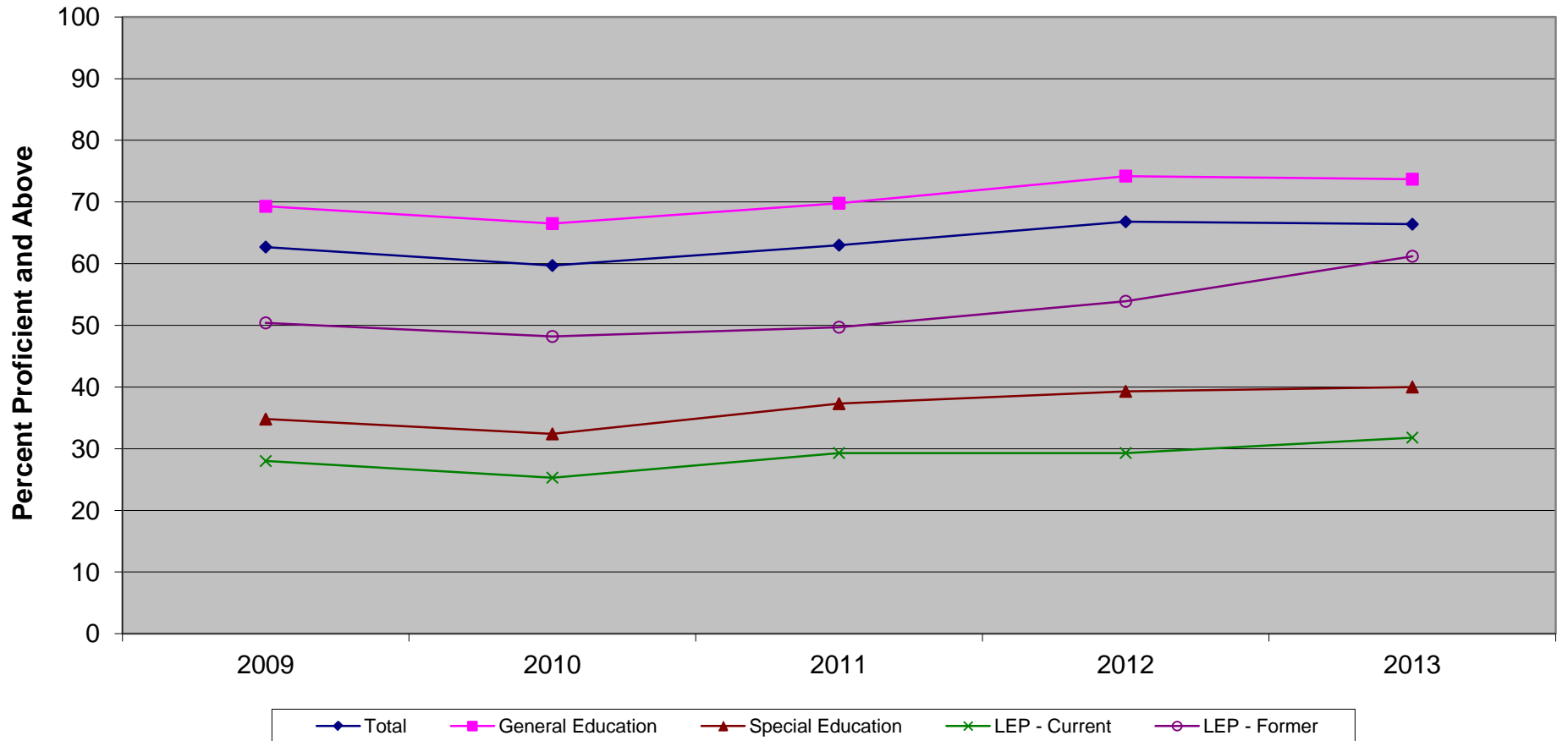


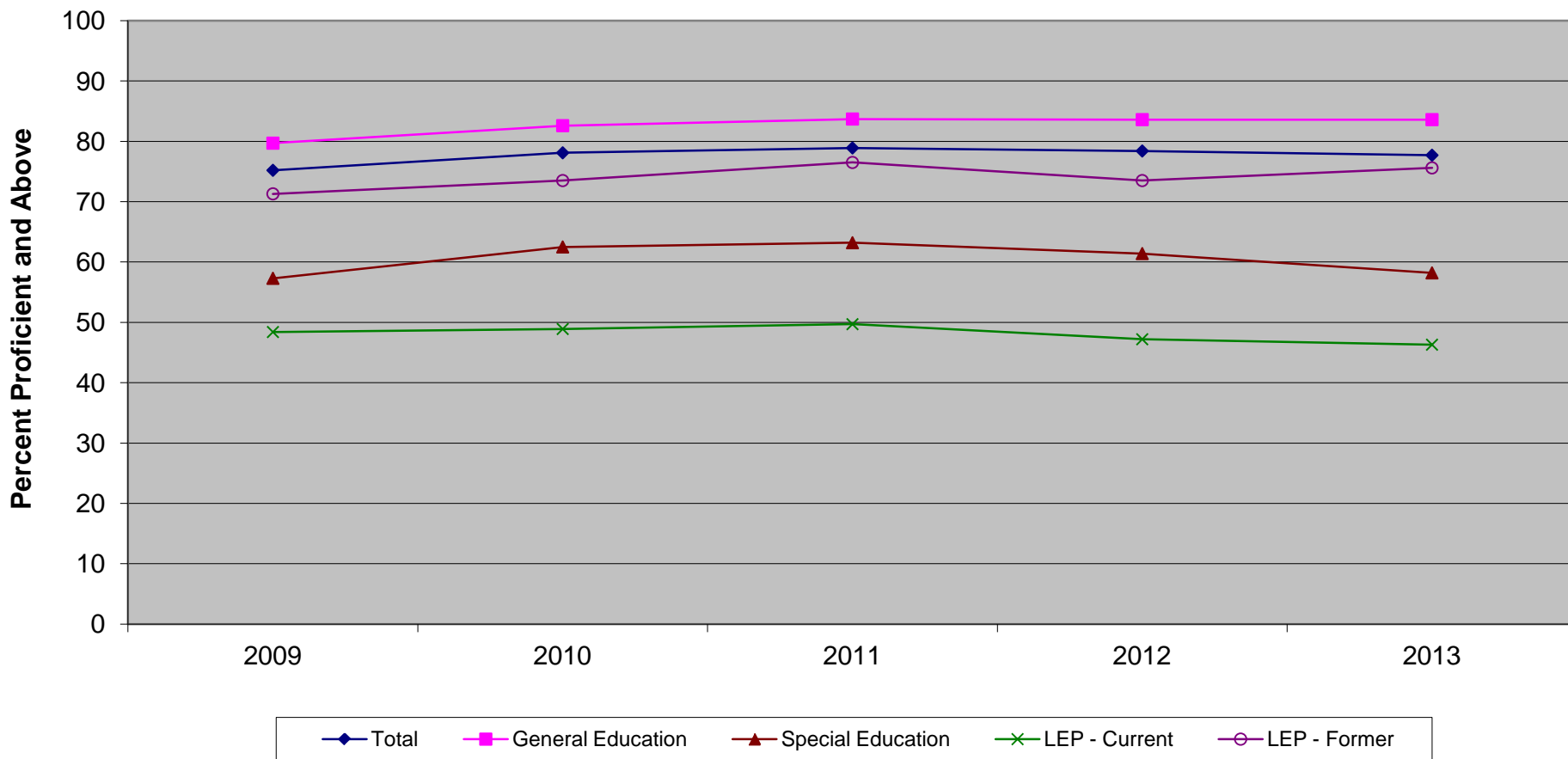
New Jersey Assessment of Skills and Knowledge
Grade 3 Language Arts Literacy Proficient and Above
by Instructional Group (2009-2013)



**New Jersey Assessment of Skills and Knowledge
Grade 3 Language Arts Literacy Proficient and Above
by Instructional Group (2009-2013)**

	2009	2010	2011	2012	2013
Total	62.7	59.7	63.0	66.8	66.4
General Education	69.3	66.5	69.8	74.2	73.7
Special Education	34.8	32.4	37.3	39.3	40.0
LEP - Current	28.0	25.3	29.3	29.3	31.8
LEP - Former	50.4	48.2	49.7	53.9	61.2

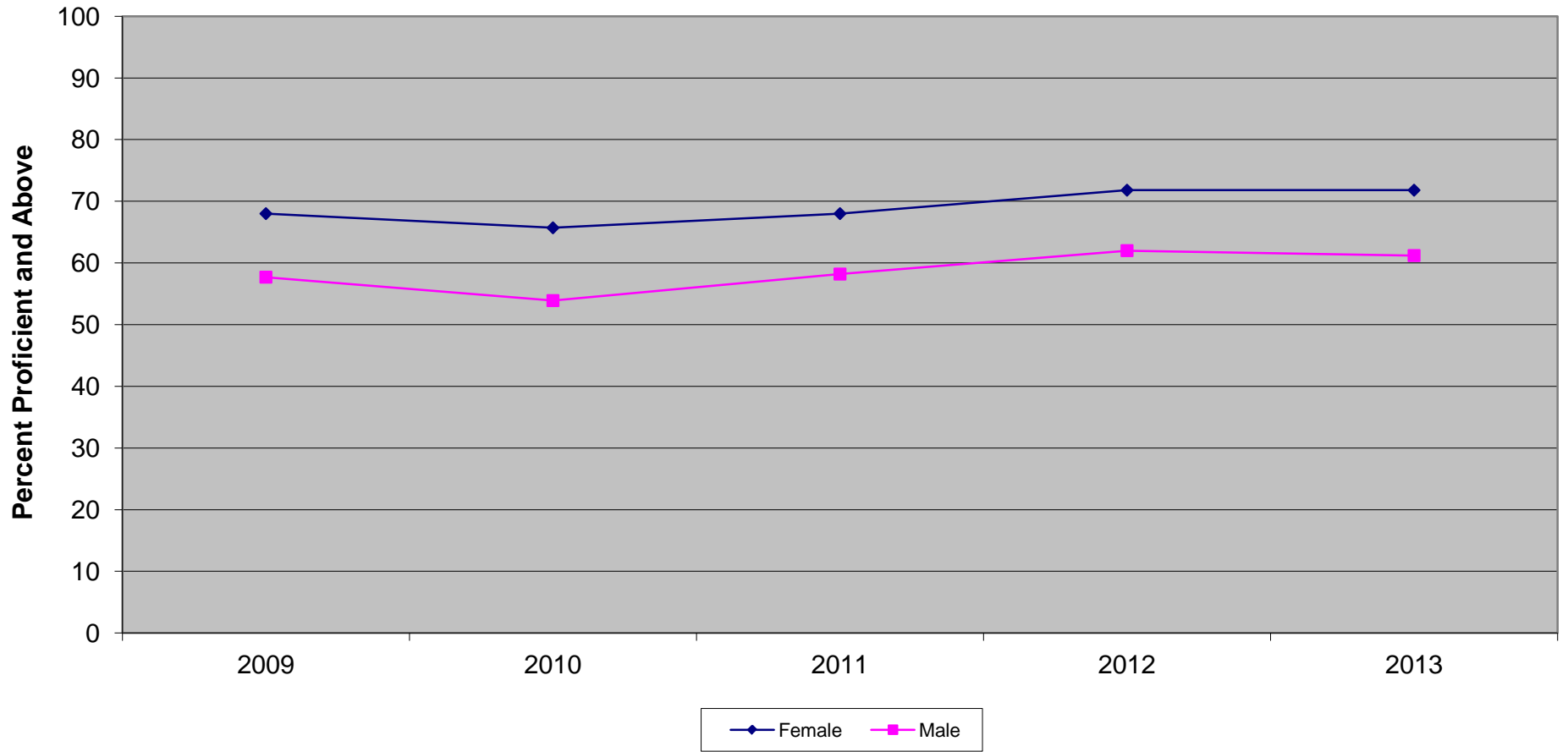
New Jersey Assessment of Skills and Knowledge
Grade 3 Mathematics Proficient and Above
by Instructional Groups (2009-2013)



**New Jersey Assessment of Skills and Knowledge
Grade 3 Mathematics Proficient and Above
by Instructional Groups (2009-2013)**

	2009	2010	2011	2012	2013
Total	75.2	78.1	78.9	78.4	77.7
General Education	79.7	82.6	83.7	83.6	83.6
Special Education	57.3	62.5	63.2	61.4	58.2
LEP - Current	48.4	48.9	49.7	47.2	46.3
LEP - Former	71.3	73.5	76.5	73.5	75.6

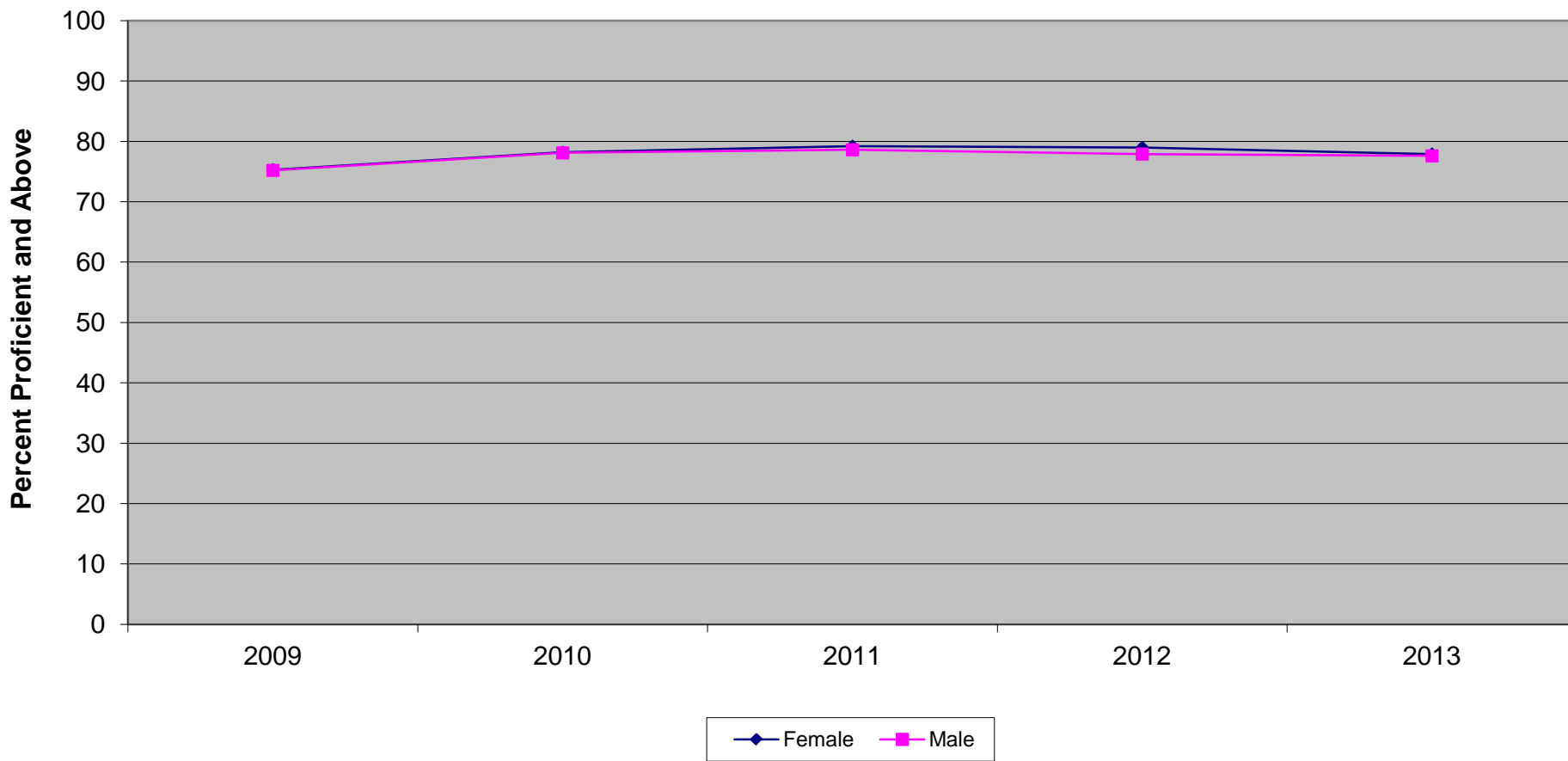
New Jersey Assessment of Skills and Knowledge
Grade 3 Language Arts Literacy Proficient and Above
by Gender (2009-2013)



**New Jersey Assessment of Skills and Knowledge
Grade 3 Language Arts Literacy Proficient and Above
by Gender (2009-2013)**

	2009	2010	2011	2012	2013
Female	68.0	65.7	68.0	71.8	71.8
Male	57.7	53.9	58.2	62.0	61.2

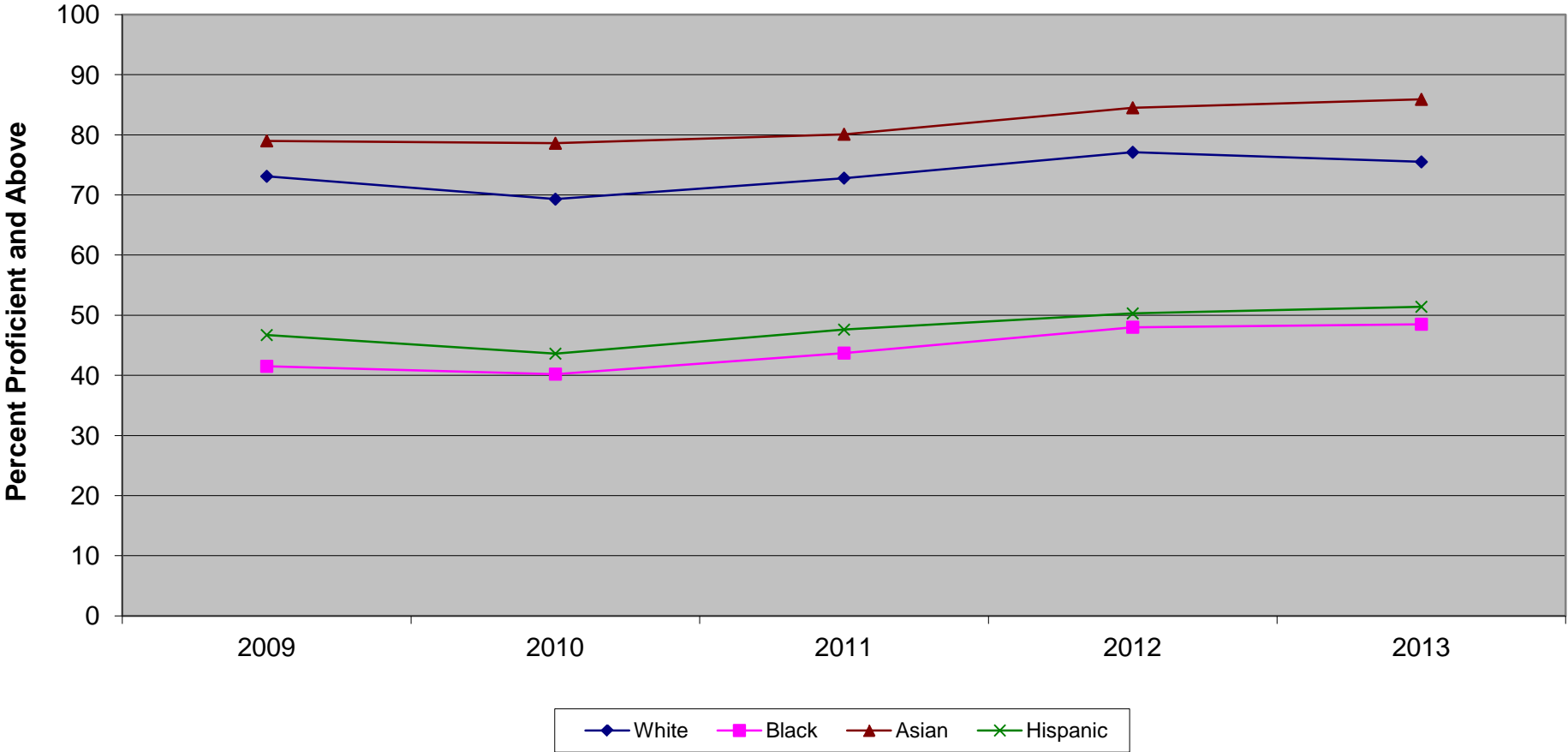
New Jersey Assessment of Skills and Knowledge
Grade 3 Mathematics Proficient and Above
by Gender (2009-2013)



**New Jersey Assessment of Skills and Knowledge
Grade 3 Mathematics Proficient and Above
by Gender (2009-2013)**

	2009	2010	2011	2012	2013
Female	75.3	78.2	79.2	79.0	77.9
Male	75.2	78.1	78.6	77.9	77.6

New Jersey Assessment of Skills and Knowledge
Grade 3 English Language Arts* Proficient and Above
by Ethnicity (2009-2013)



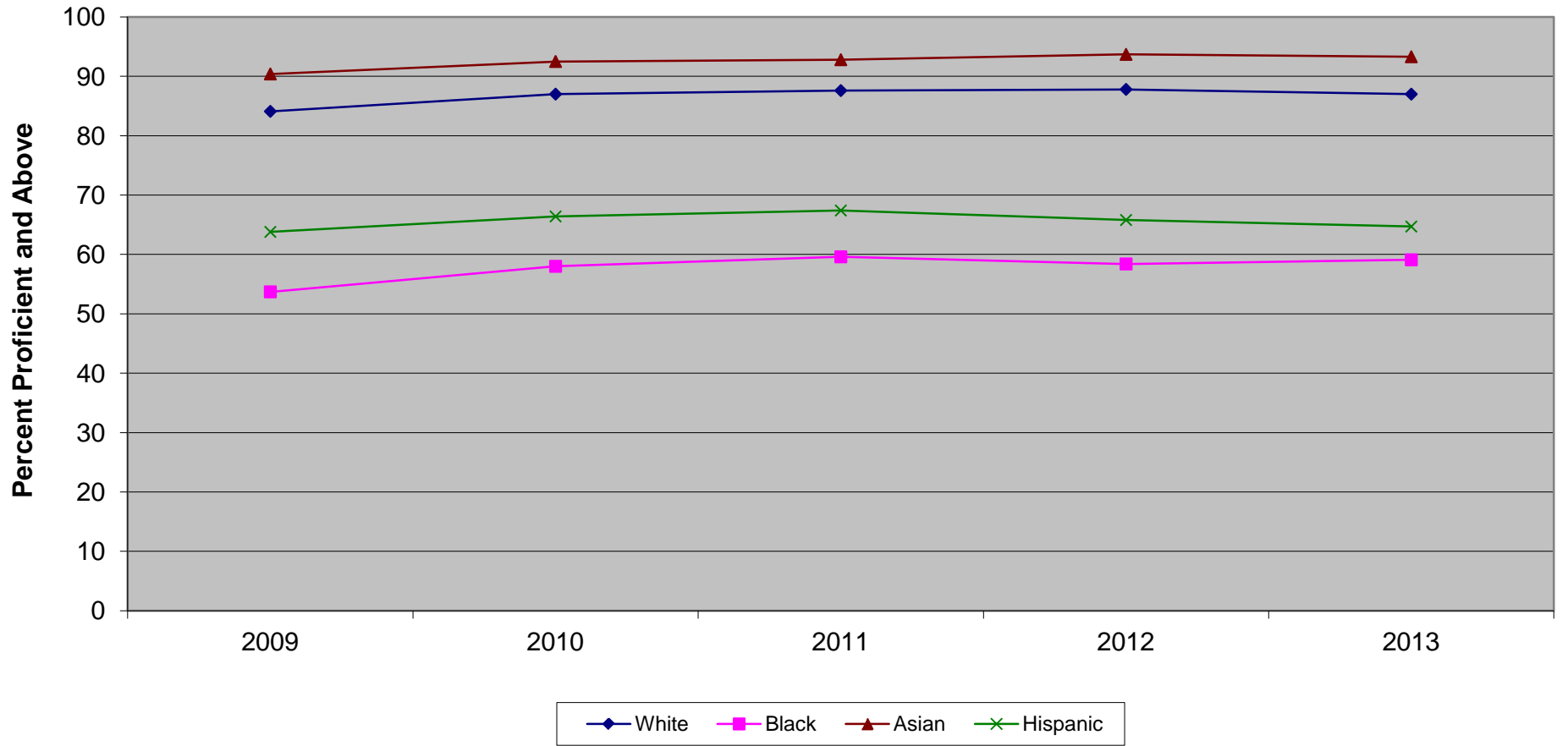
* formerly Language Arts Literacy

**New Jersey Assessment of Skills and Knowledge
Grade 3 English Language Arts* Scale Score Mean
by Ethnicity (2009-2013)**

	2009	2010	2011	2012	2013
White	73.1	69.3	72.8	77.1	75.5
Black	41.5	40.2	43.7	48.0	48.5
Asian	79.0	78.6	80.1	84.5	85.9
Hispanic	46.7	43.6	47.6	50.3	51.4

* formerly Language Arts Literacy

New Jersey Assessment of Skills and Knowledge
Grade 3 Mathematics Proficient and Above
by Ethnicity (2009-2013)

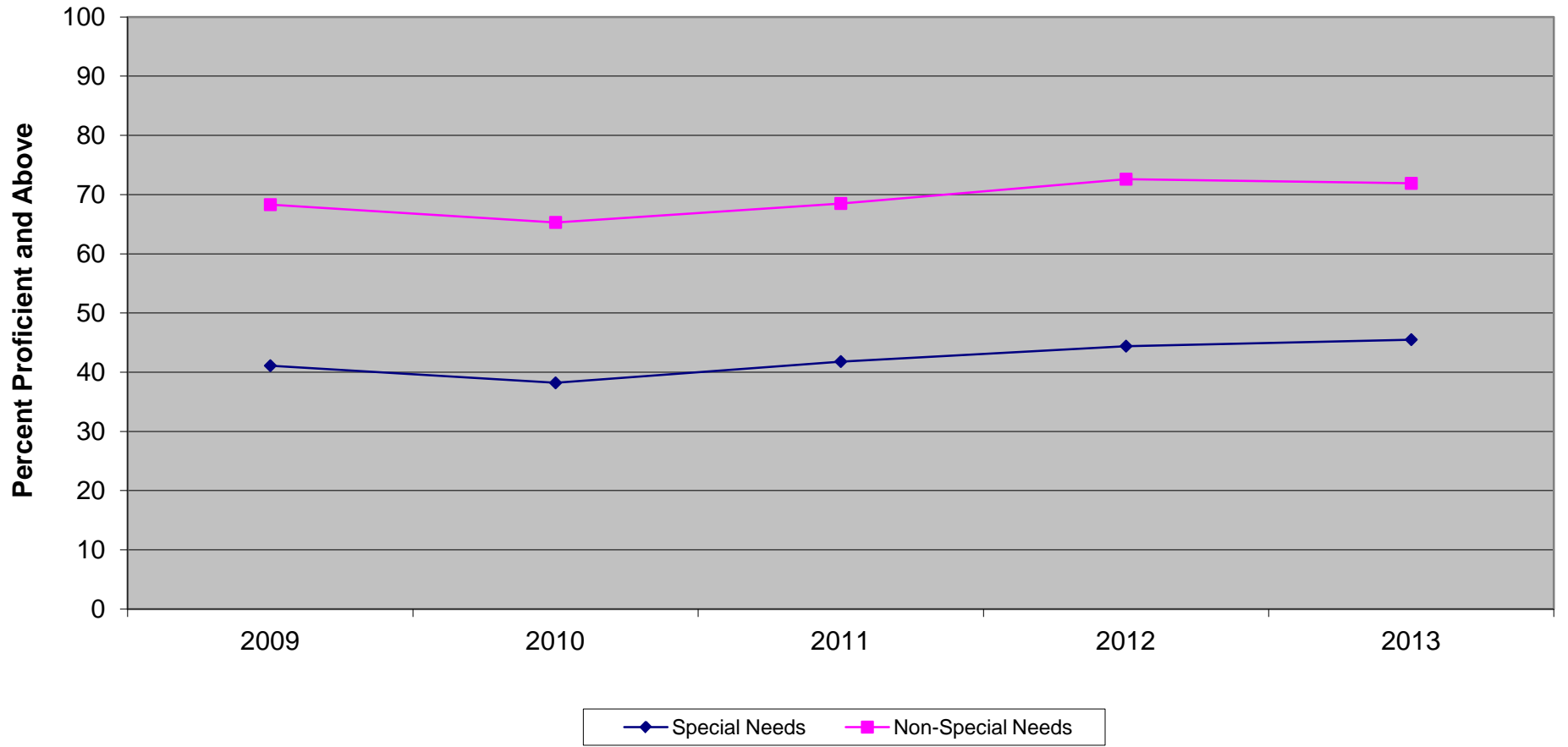


Ethnic codes Pacific Islander, American Indian/Alaskan Native and Other are not shown due to the small number of students in these categories.

**New Jersey Assessment of Skills and Knowledge
Grade 3 Mathematics Proficient and Above
by Ethnicity (2009-2013)**

	2009	2010	2011	2012	2013
White	84.1	87.0	87.6	87.8	87.0
Black	53.7	58.0	59.6	58.4	59.1
Asian	90.4	92.5	92.8	93.7	93.3
Hispanic	63.8	66.4	67.4	65.8	64.7

**New Jersey Assessment of Skills and Knowledge
Grade 3 English Language Arts* Proficient and Above
Special Needs vs Non-Special Needs (2009-2013)**



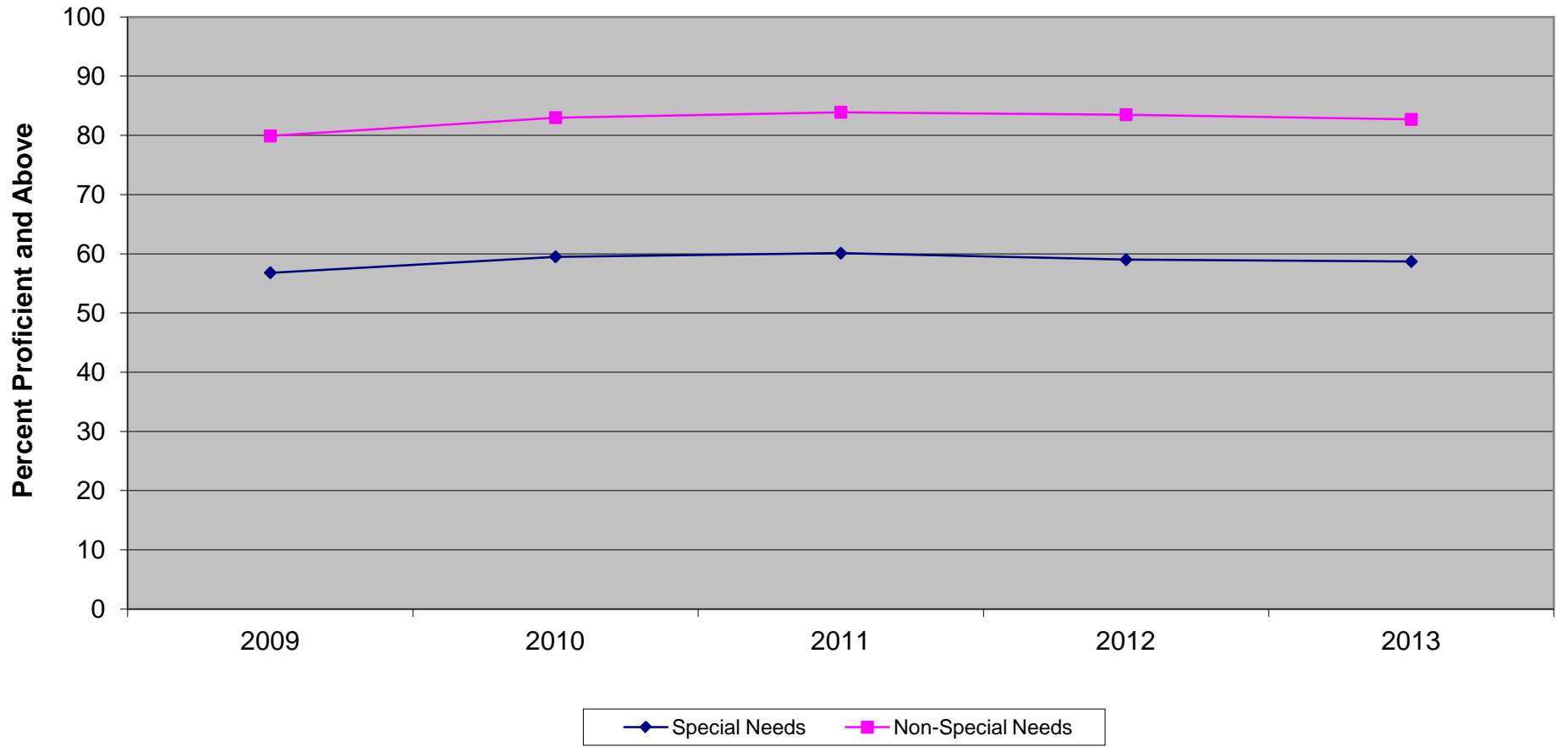
* formerly Language Arts Literacy

**New Jersey Assessment of Skills and Knowledge
Grade 3 English Language Arts* Proficient and Above
Special Needs vs Non-Special Needs (2009-2013)**

	2009	2010	2011	2012	2013
Special Needs	41.1	38.2	41.8	44.4	45.5
Non-Special Needs	68.3	65.3	68.5	72.6	71.9

* formerly Language Arts Literacy

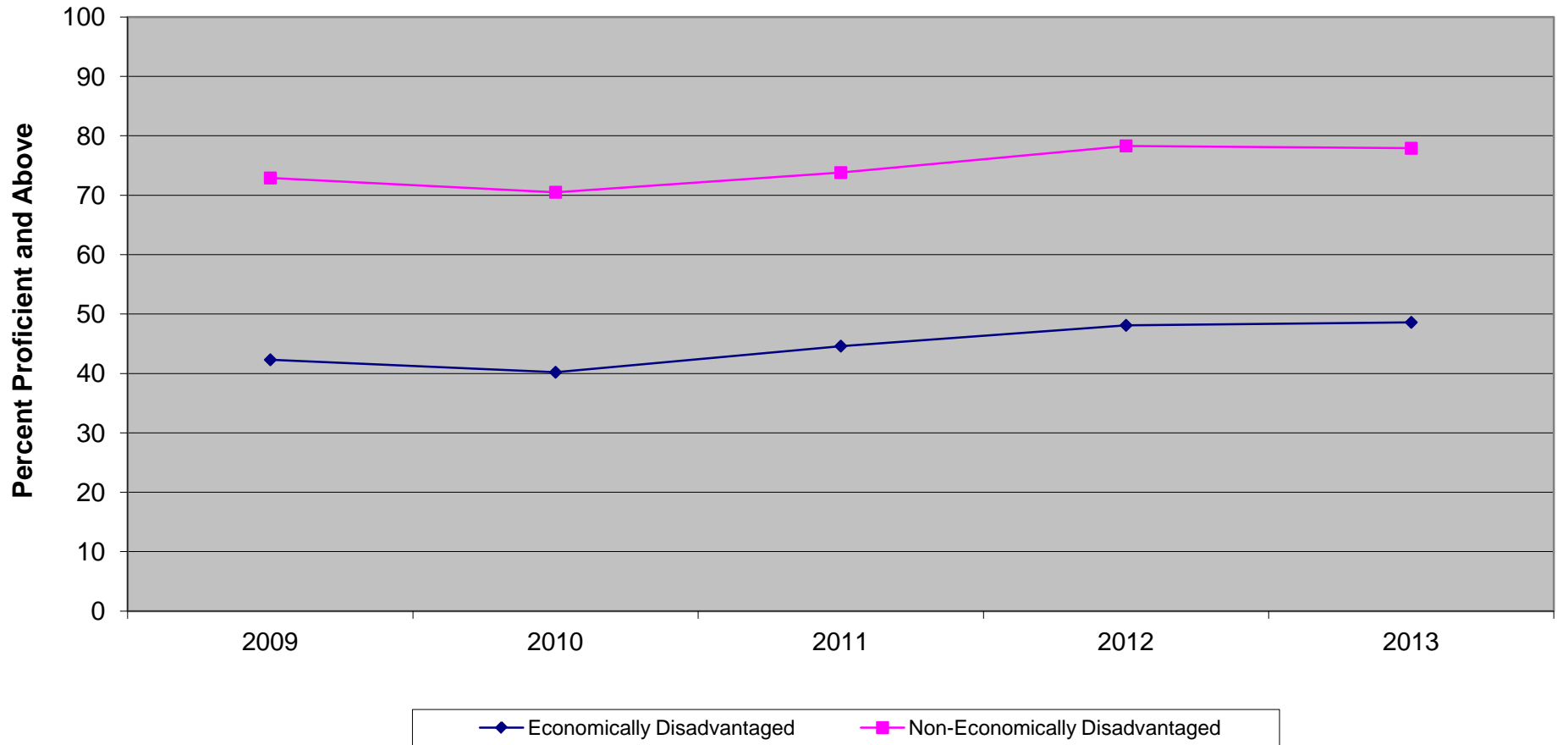
New Jersey Assessment of Skills and Knowledge
Grade 3 Mathematics Proficient and Above
Special Needs vs Non-Special Needs (2009-2013)



**New Jersey Assessment of Skills and Knowledge
Grade 3 Mathematics Proficient and Above
Special Needs vs Non-Special Needs (2009-2013)**

	2009	2010	2011	2012	2013
Special Needs	56.8	59.5	60.1	59.0	58.7
Non-Special Needs	79.9	83.0	83.9	83.5	82.7

New Jersey Assessment of Skills and Knowledge
Grade 3 English Language Arts* Proficient and Above
Economically Disadvantaged vs Non-Economically Disadvantaged (2009-2013)



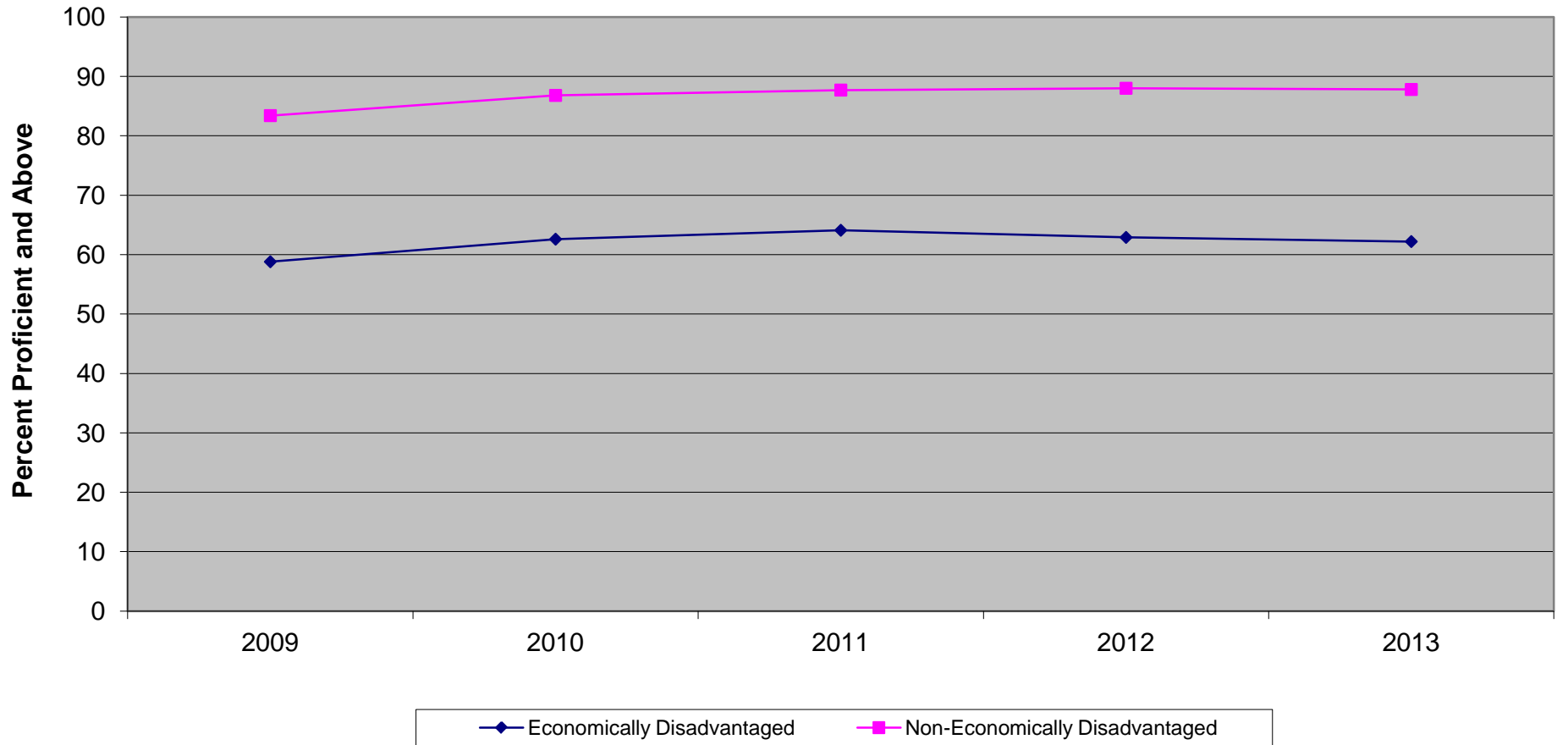
* formerly Language Arts Literacy

**New Jersey Assessment of Skills and Knowledge
Grade 3 English Language Arts* Proficient and Above
Economically Disadvantaged vs Non-Economically Disadvantaged (2009-2013)**

	2009	2010	2011	2012	2013
Economically Disadvantaged	42.3	40.2	44.6	48.1	48.6
Non-Economically Disadvantaged	72.9	70.5	73.8	78.3	77.9

* formerly Language Arts Literacy

New Jersey Assessment of Skills and Knowledge
Grade 3 Mathematics Proficient and Above
Economically Disadvantaged vs Non-Economically Disadvantaged (2009-2013)



**New Jersey Assessment of Skills and Knowledge
Grade 3 Mathematics Proficient and Above
Economically Disadvantaged vs Non-Economically Disadvantaged (2009-2013)**

	2009	2010	2011	2012	2013
Economically Disadvantaged	58.8	62.6	64.1	62.9	62.2
Non-Economically Disadvantaged	83.4	86.8	87.7	88.0	87.8