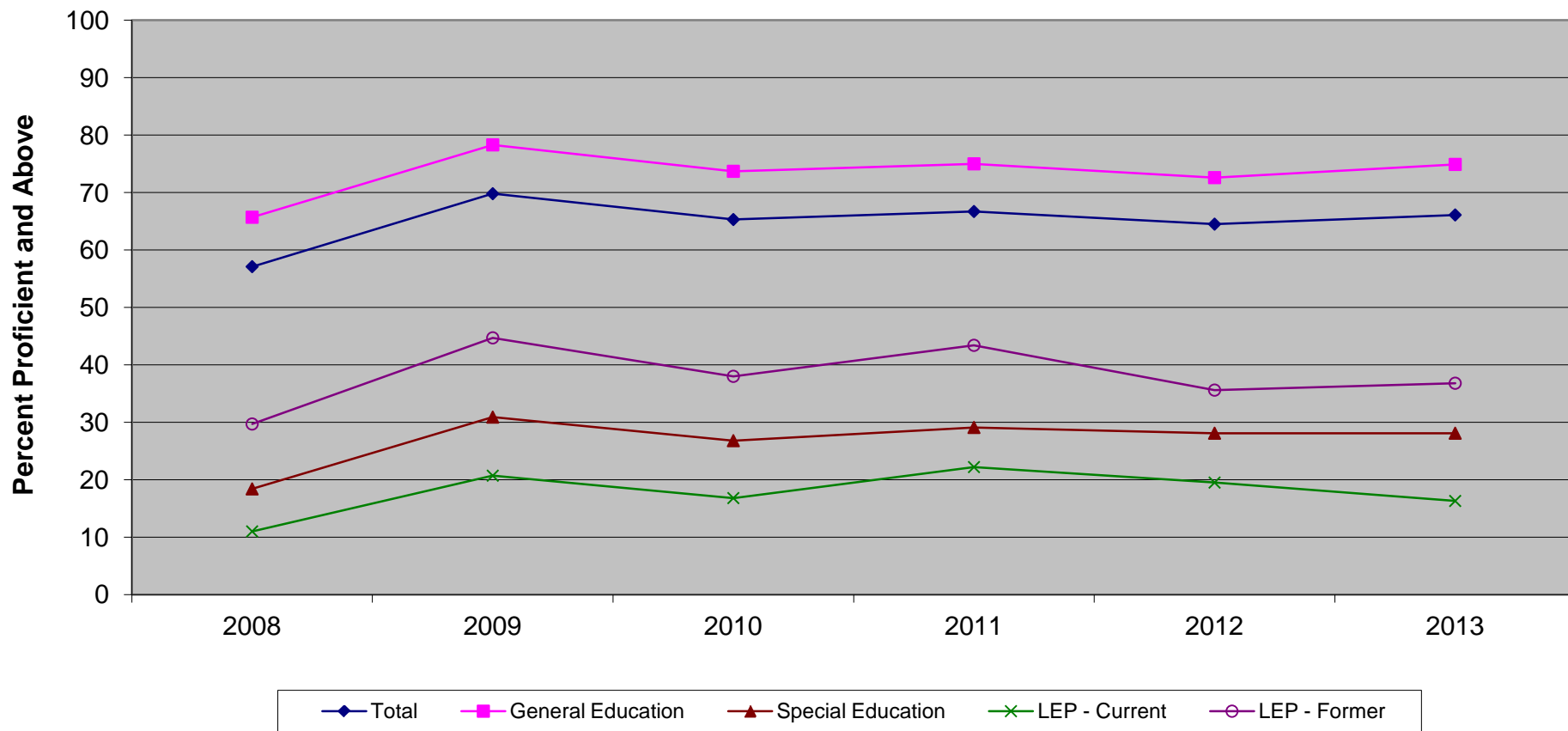


New Jersey Assessment of Skills and Knowledge  
Grade 6 English Language Arts\* Proficient and Above  
by Instructional Groups (2008 - 2013)



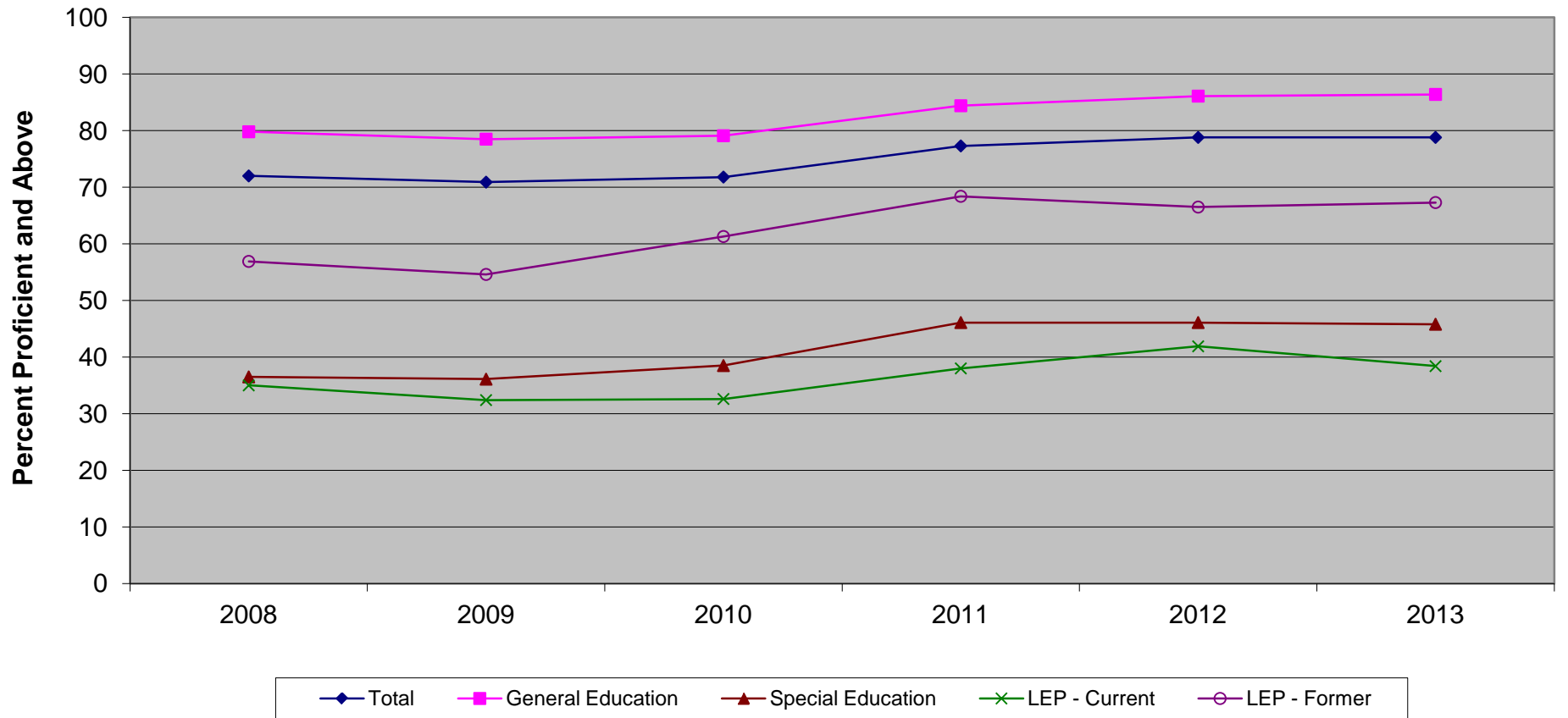
\* formerly Language Arts Literacy

**New Jersey Assessment of Skills and Knowledge  
Grade 6 English Language Arts\* Proficient and Above  
by Instructional Groups (2008 - 2013)**

	<b>2008</b>	<b>2009</b>	<b>2010</b>	<b>2011</b>	<b>2012</b>	<b>2013</b>
Total	57.1	69.8	65.3	66.7	64.5	66.1
General Education	65.7	78.3	73.7	75.0	72.6	74.9
Special Education	18.4	30.9	26.8	29.1	28.1	28.1
LEP - Current	11.0	20.7	16.8	22.2	19.5	16.3
LEP - Former	29.7	44.7	38.0	43.4	35.6	36.8

\* formerly Language Arts Literacy

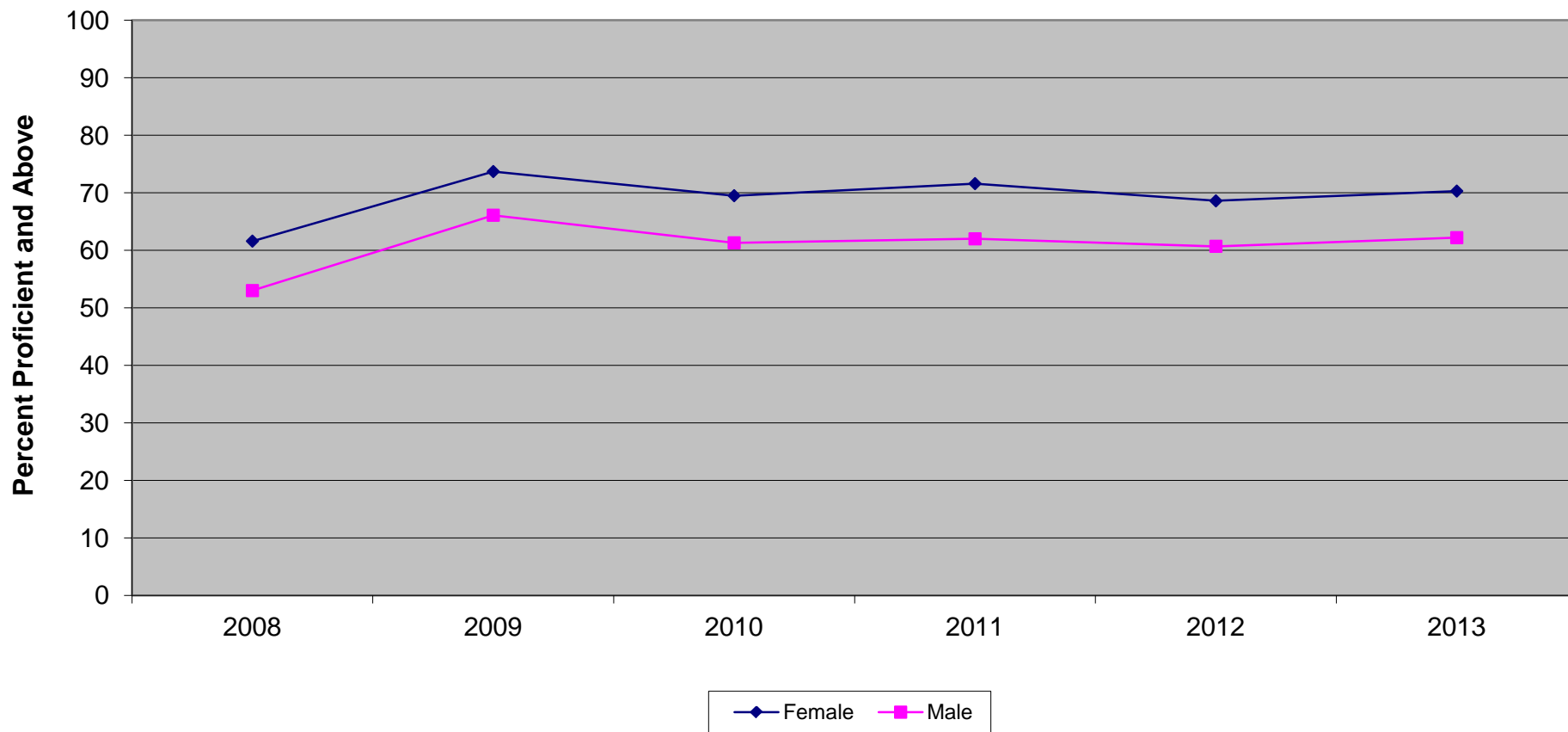
New Jersey Assessment of Skills and Knowledge  
Grade 6 Mathematics Proficient and Above  
by Instructional Groups (2008 - 2013)



**New Jersey Assessment of Skills and Knowledge  
Grade 6 Mathematics Proficient and Above  
by Instructional Groups (2008 - 2013)**

	<b>2008</b>	<b>2009</b>	<b>2010</b>	<b>2011</b>	<b>2012</b>	<b>2013</b>
Total	72.0	70.9	71.8	77.3	78.8	78.8
General Education	79.8	78.5	79.1	84.4	86.1	86.4
Special Education	36.5	36.1	38.5	46.1	46.1	45.8
LEP - Current	35.0	32.4	32.6	38.0	41.9	38.4
LEP - Former	56.9	54.6	61.3	68.4	66.5	67.3

New Jersey Assessment of Skills and Knowledge  
Grade 6 English Language Arts\* Proficient and Above  
by Gender (2008 - 2013)



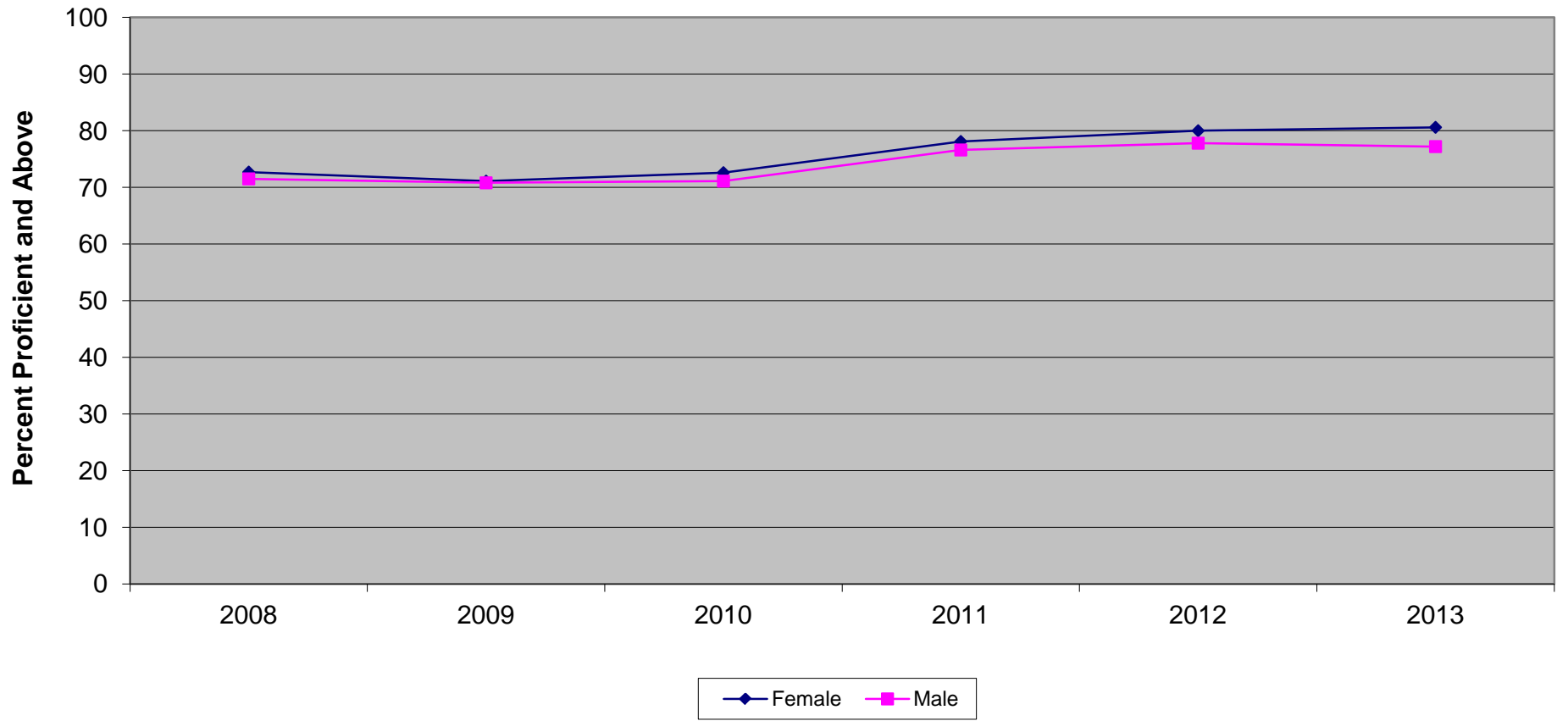
\* formerly Language Arts Literacy

**New Jersey Assessment of Skills and Knowledge  
Grade 6 English Language Arts\* Proficient and Above  
by Gender (2008 - 2013)**

	<b>2008</b>	<b>2009</b>	<b>2010</b>	<b>2011</b>	<b>2012</b>	<b>2013</b>
Female	61.6	73.7	69.5	71.6	68.6	70.3
Male	53.0	66.1	61.3	62.0	60.7	62.2

\* formerly Language Arts Literacy

New Jersey Assessment of Skills and Knowledge  
Grade 6 Mathematics Proficient and Above  
by Gender (2008 - 2013)

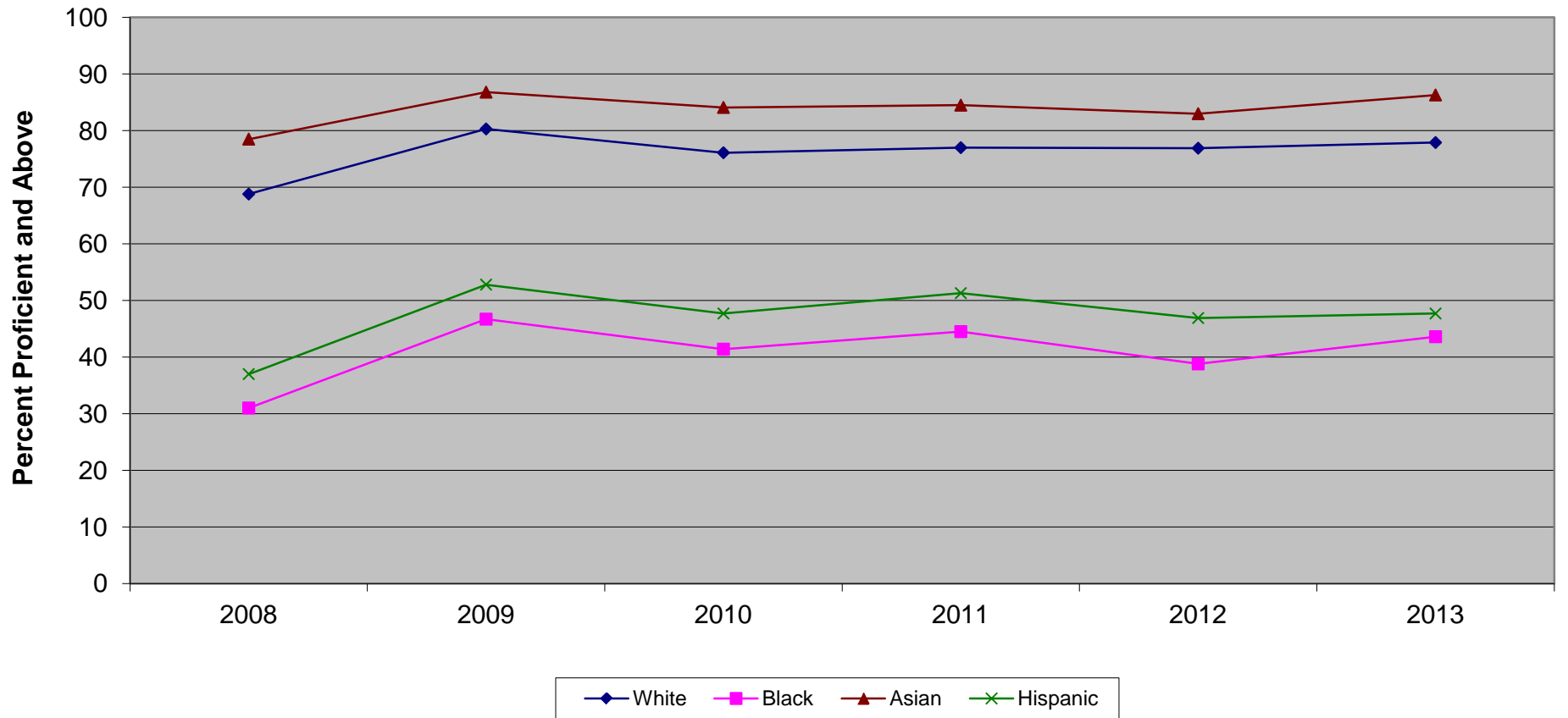


**New Jersey Assessment of Skills and Knowledge  
Grade 6 Mathematics Proficient and Above  
by Gender (2008 - 2013)**

	<b>2008</b>	<b>2009</b>	<b>2010</b>	<b>2011</b>	<b>2012</b>	<b>2013</b>
Female	72.7	71.1	72.6	78.1	80.0	80.6
Male	71.5	70.8	71.1	76.6	77.8	77.2



New Jersey Assessment of Skills and Knowledge  
Grade 6 English Language Arts\* Proficient and Above  
by Ethnicity (2008 - 2013)



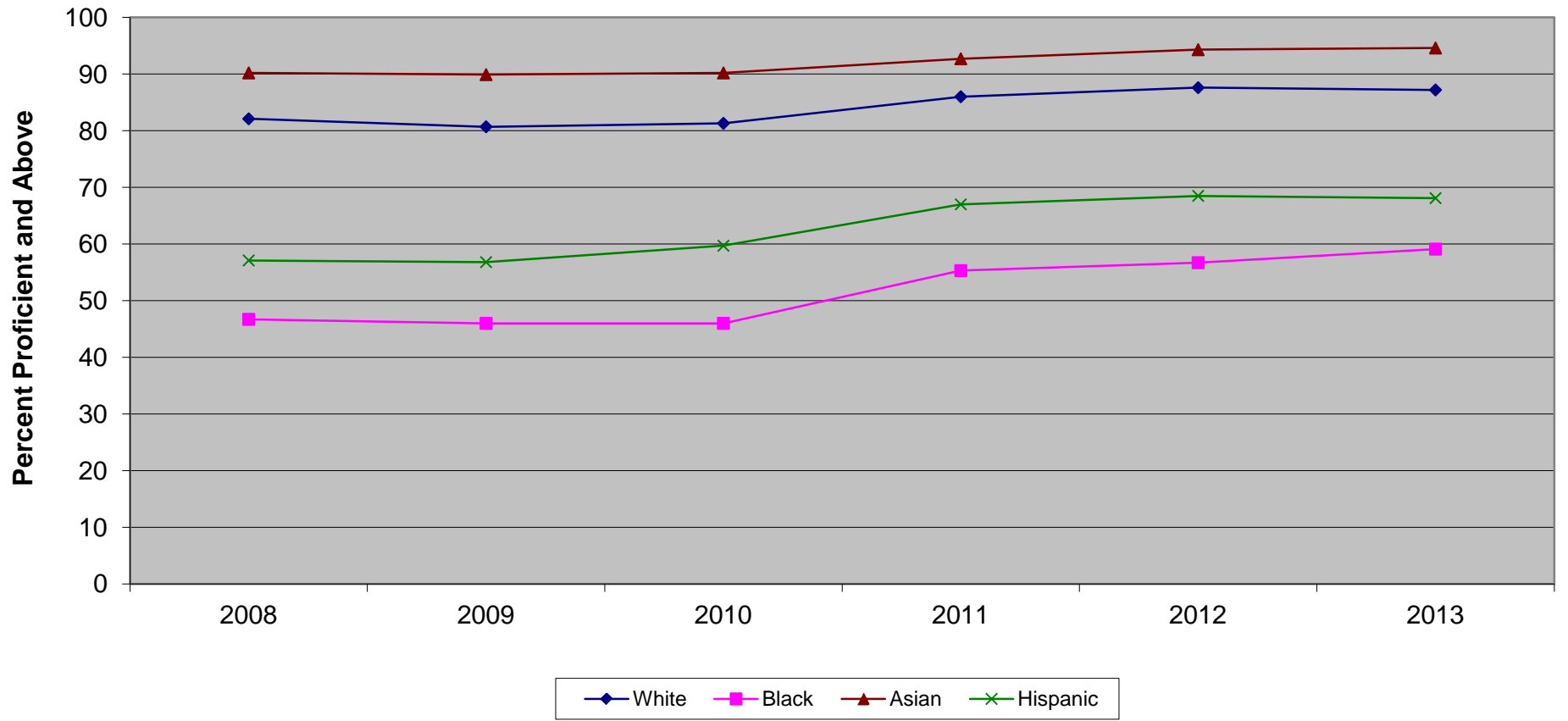
\* formerly Language Arts Literacy

**New Jersey Assessment of Skills and Knowledge  
Grade 6 English Language Arts\* Proficient and Above  
by Ethnicity (2008 - 2013)**

	<b>2008</b>	<b>2009</b>	<b>2010</b>	<b>2011</b>	<b>2012</b>	<b>2013</b>
White	68.8	80.3	76.1	77.0	76.9	77.9
Black	31.0	46.7	41.4	44.5	38.8	43.6
Asian	78.5	86.8	84.1	84.5	83.0	86.3
Hispanic	37.0	52.8	47.7	51.3	46.9	47.7

\* formerly Language Arts Literacy

New Jersey Assessment of Skills and Knowledge  
Grade 6 Mathematics Proficient and Above  
by Ethnicity (2008 - 2013)

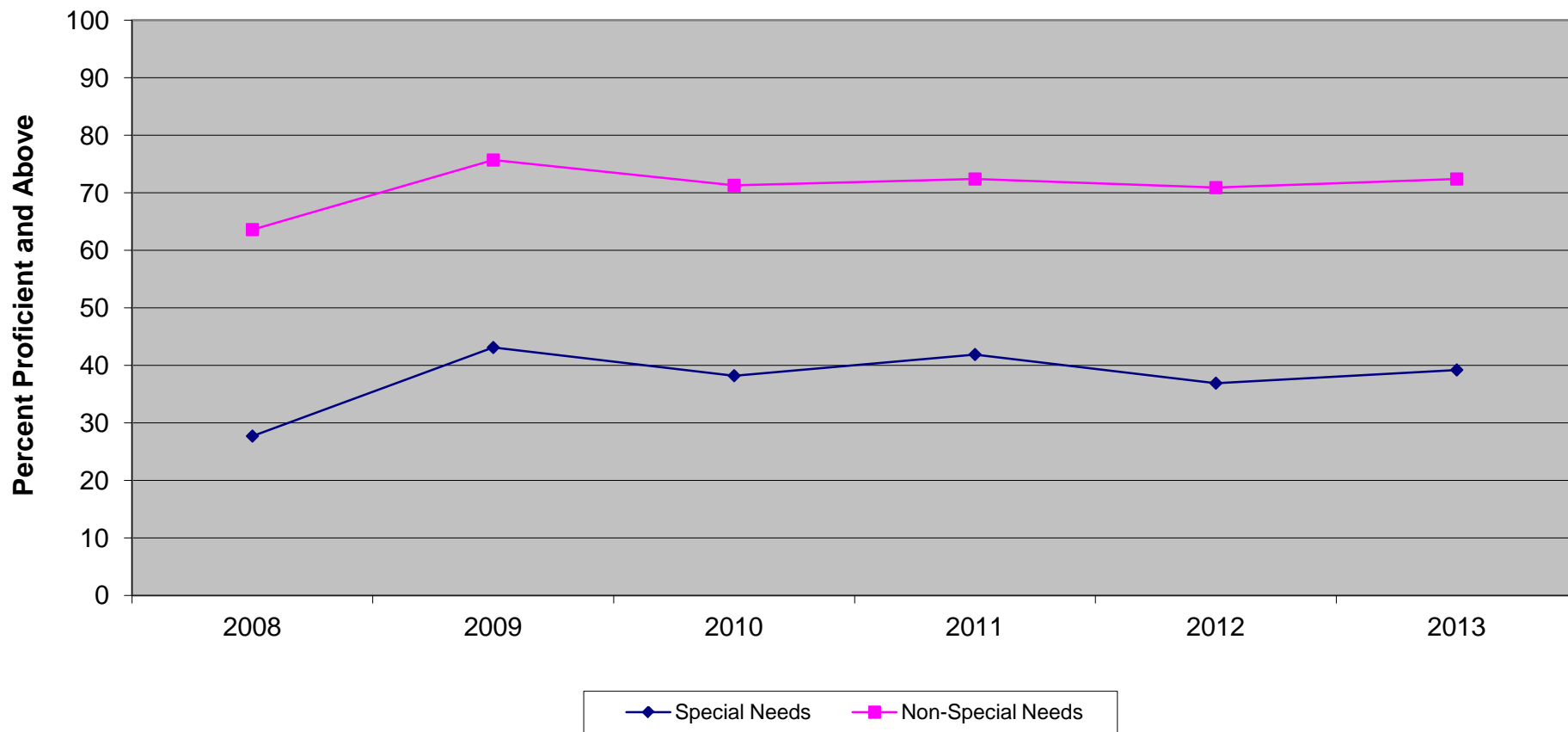


Ethnic codes Pacific Islander, American Indian/Alaskan Native and Other are not shown due to the small number of students in these categories.

**New Jersey Assessment of Skills and Knowledge  
Grade 6 Mathematics Proficient and Above  
by Ethnicity (2008 - 2013)**

	<b>2008</b>	<b>2009</b>	<b>2010</b>	<b>2011</b>	<b>2012</b>	<b>2013</b>
White	82.1	80.7	81.3	86.0	87.6	87.2
Black	46.7	46.0	46.0	55.3	56.7	59.1
Asian	90.2	89.9	90.2	92.7	94.3	94.6
Hispanic	57.1	56.8	59.7	67.0	68.5	68.1

**New Jersey Assessment of Skills and Knowledge  
Grade 6 English Language Arts\* Proficient and Above  
Special Needs vs Non-Special Needs (2008 - 2013)**



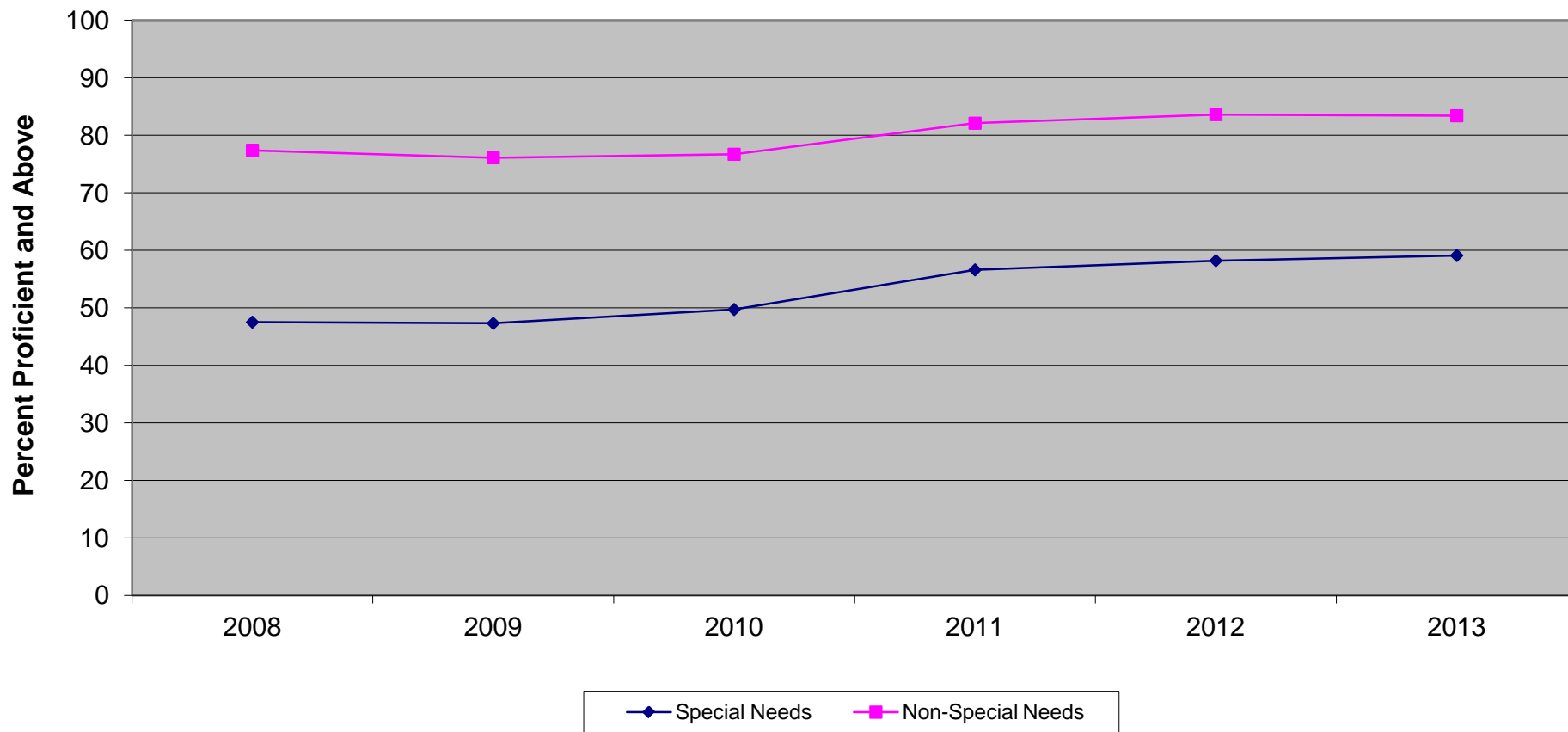
\* formerly Language Arts Literacy

**New Jersey Assessment of Skills and Knowledge  
Grade 6 English Language Arts\* Proficient and Above  
Special Needs vs Non-Special Needs (2008 - 2013)**

	<b>2008</b>	<b>2009</b>	<b>2010</b>	<b>2011</b>	<b>2012</b>	<b>2013</b>
Special Needs	27.7	43.1	38.2	41.9	36.9	39.2
Non-Special Needs	63.6	75.7	71.3	72.4	70.9	72.4

\* formerly Language Arts Literacy

New Jersey Assessment of Skills and Knowledge  
Grade 6 Mathematics Proficient and Above  
Special Needs vs Non-Special Needs (2008 - 2013)

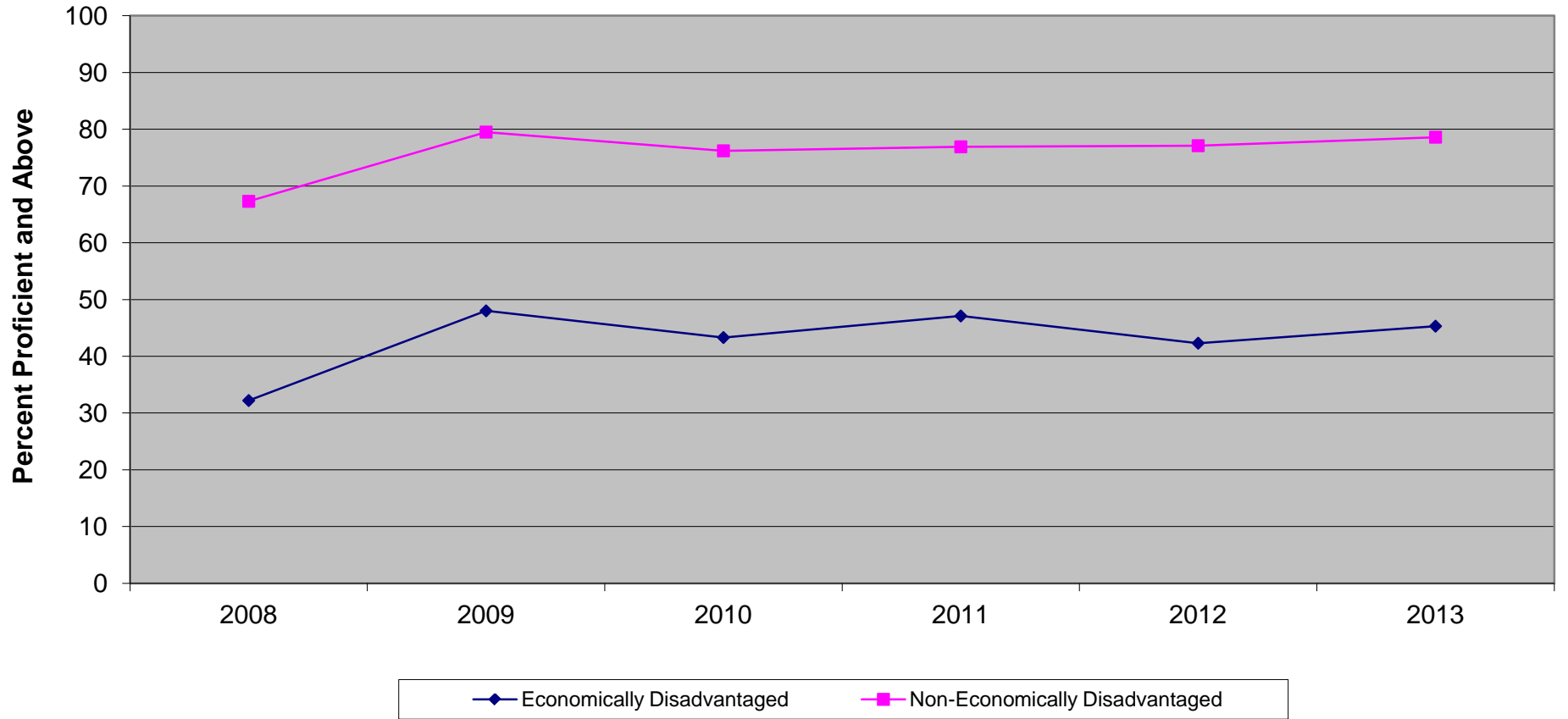


**New Jersey Assessment of Skills and Knowledge  
Grade 6 Mathematics Proficient and Above  
Special Needs vs Non-Special Needs (2008 - 2013)**

	<b>2008</b>	<b>2009</b>	<b>2010</b>	<b>2011</b>	<b>2012</b>	<b>2013</b>
Special Needs	47.5	47.3	49.7	56.6	58.2	59.1
Non-Special Needs	77.4	76.1	76.7	82.1	83.6	83.4



New Jersey Assessment of Skills and Knowledge  
Grade 6 English Language Arts\* Proficient and Above  
Economically Disadvantaged vs Non-Economically Disadvantaged (2008 - 2013)



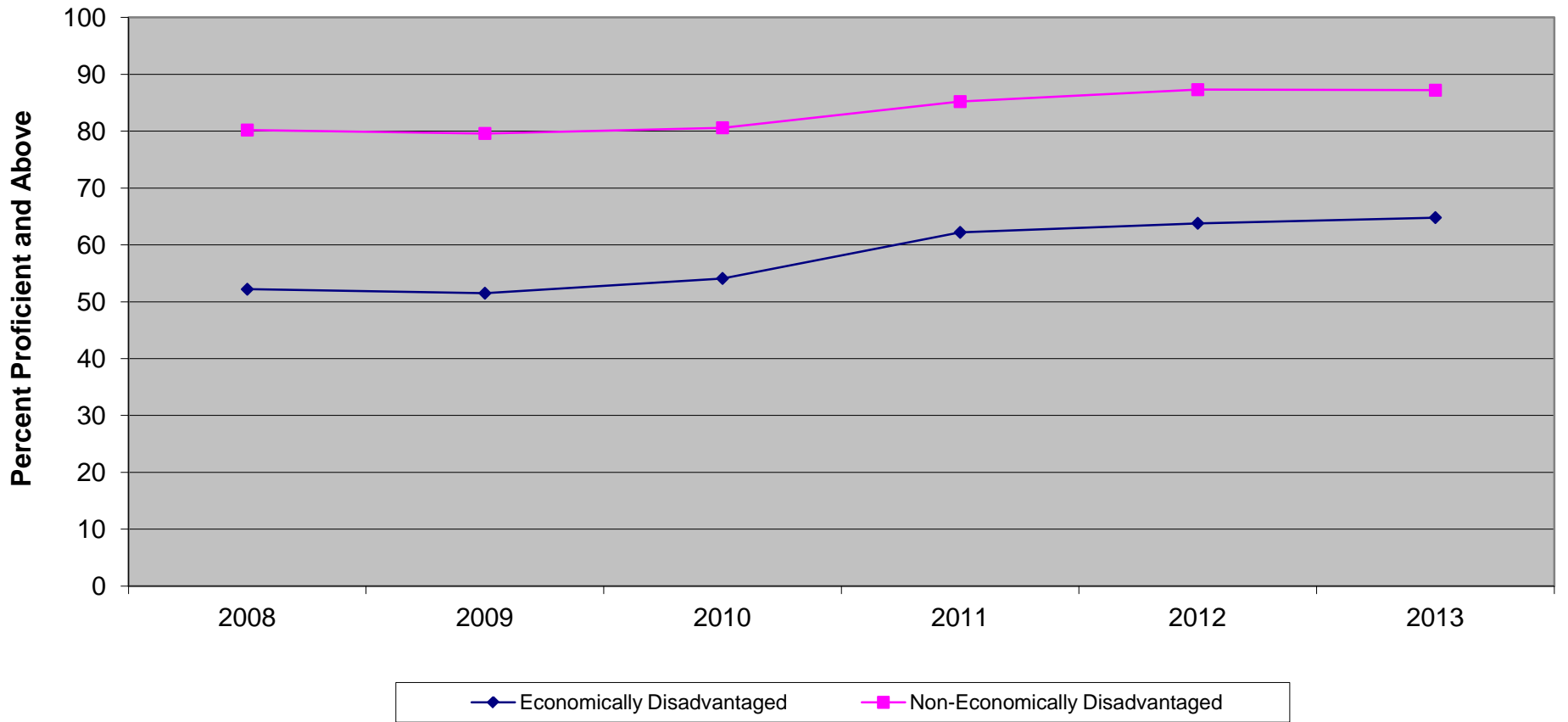
\* formerly Language Arts Literacy

**New Jersey Assessment of Skills and Knowledge  
Grade 6 English Language Arts\* Proficient and Above  
Economically Disadvantaged vs Non-Economically Disadvantaged (2008 - 2013)**

	<b>2008</b>	<b>2009</b>	<b>2010</b>	<b>2011</b>	<b>2012</b>	<b>2013</b>
Economically Disadvantaged	32.2	48.0	43.3	47.1	42.3	45.3
Non-Economically Disadvantaged	67.3	79.5	76.2	76.9	77.1	78.6

\* formerly Language Arts Literacy

**New Jersey Assessment of Skills and Knowledge  
Grade 6 Mathematics Proficient and Above  
Economically Disadvantaged vs Non-Economically Disadvantaged (2008 - 2013)**



**New Jersey Assessment of Skills and Knowledge  
Grade 6 Mathematics Proficient and Above  
Economically Disadvantaged vs Non-Economically Disadvantaged (2008 - 2013)**

	<b>2008</b>	<b>2009</b>	<b>2010</b>	<b>2011</b>	<b>2012</b>	<b>2013</b>
Economically Disadvantaged	52.2	51.5	54.1	62.2	63.8	64.8
Non-Economically Disadvantaged	80.2	79.6	80.6	85.2	87.3	87.2