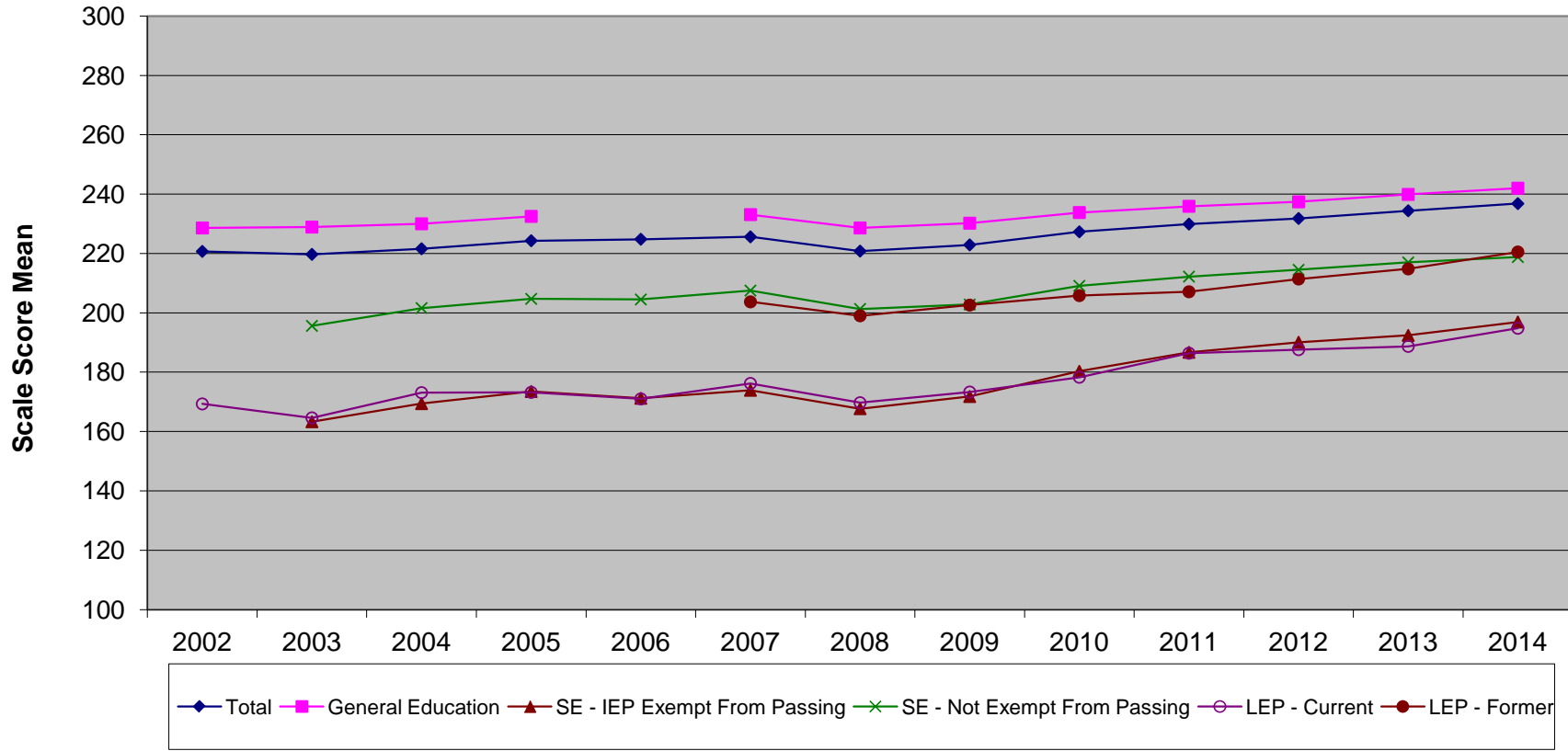


**New Jersey High School Proficiency Assessment  
Language Arts Literacy Scale Score Mean by Instructional Group (2002-2014)**



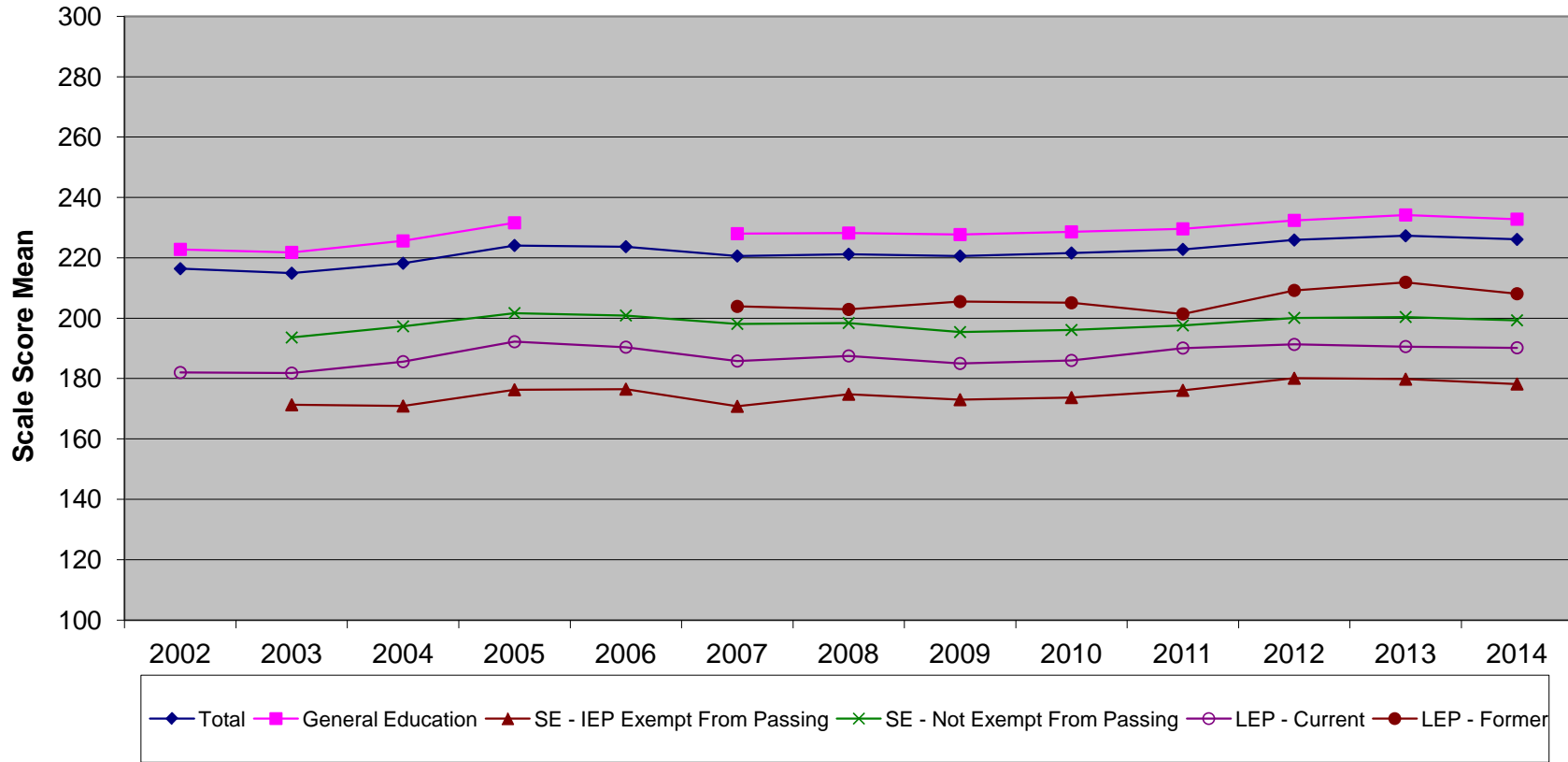
The General Education category was not reported in 2006.

In 2002, Special Education could not be disaggregated into the categories of SE Not Exempt From Passing and SE IEP Exempt From Passing and thus those categories are not plotted on this graph.

**New Jersey High School Proficiency Assessment  
Language Arts Literacy Scale Score Mean by Instructional Group  
(2002-2014)**

	<b>2002</b>	<b>2003</b>	<b>2004</b>	<b>2005</b>	<b>2006</b>	<b>2007</b>	<b>2008</b>	<b>2009</b>	<b>2010</b>	<b>2011</b>	<b>2012</b>	<b>2013</b>	<b>2014</b>
<b>Total</b>	220.7	219.7	221.6	224.3	224.8	225.6	220.8	222.9	227.3	229.9	231.8	234.4	236.8
<b>General Education</b>	228.6	228.9	230.0	232.5		233.1	228.6	230.2	233.8	235.9	237.4	239.9	242.0
<b>SE - IEP Exempt From Passing</b>		163.3	169.4	173.5	171.2	173.9	167.7	171.8	180.3	186.7	190.1	192.4	196.9
<b>SE - Not Exempt From Passing</b>		195.6	201.6	204.7	204.5	207.5	201.3	202.8	209.1	212.2	214.5	217.0	218.8
<b>LEP - Current</b>	169.3	164.6	173.1	173.2	171.0	176.2	169.7	173.3	178.3	186.4	187.6	188.7	194.8
<b>LEP - Former</b>						203.7	199.0	202.6	205.8	207.1	211.4	214.8	220.5

**New Jersey High School Proficiency Assessment  
Mathematics Scale Score Mean by Instructional Group (2002-2014)**



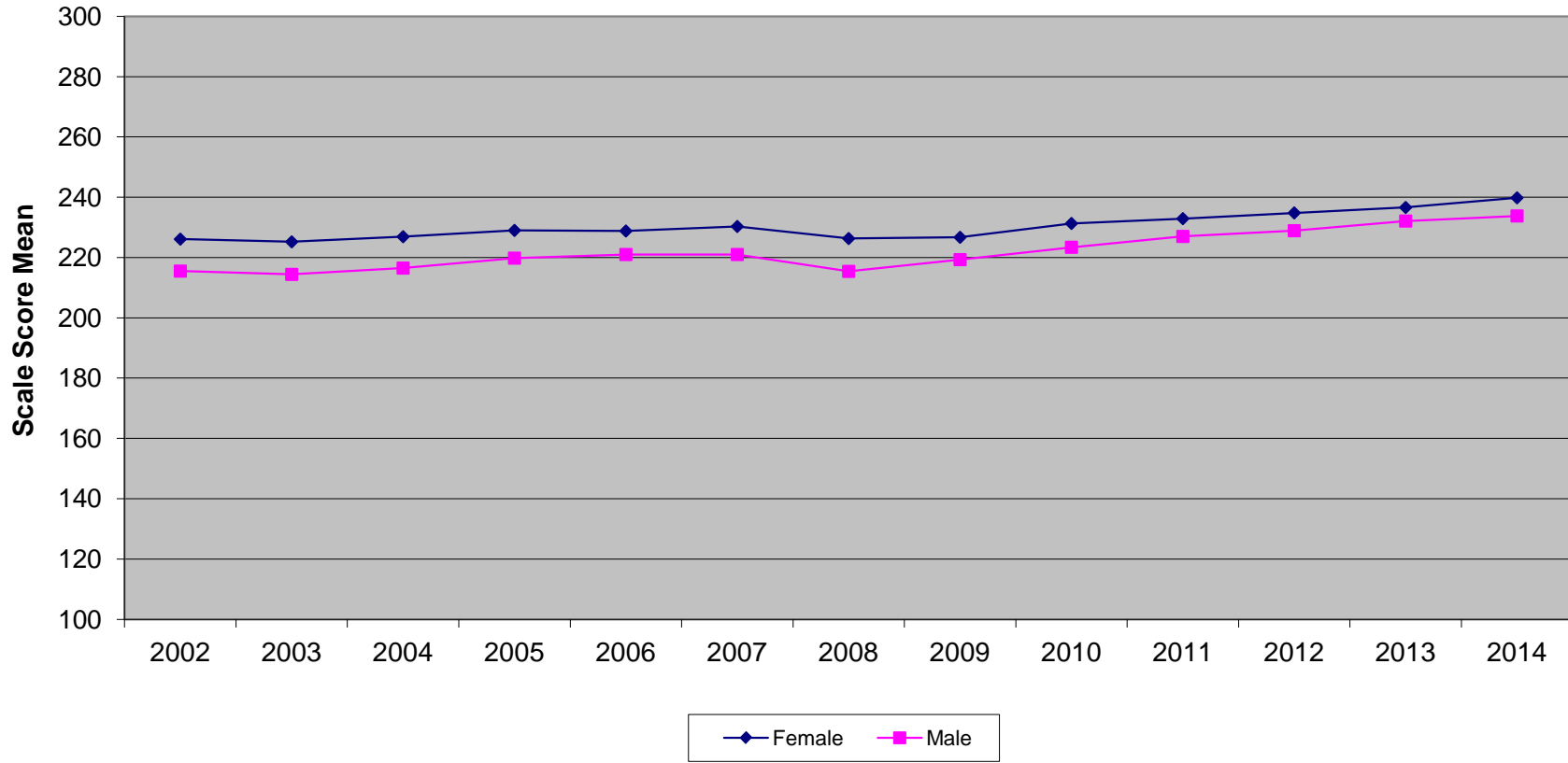
The General Education category was not reported in 2006.

In 2002, Special Education could not be disaggregated into the categories of SE Not Exempt From Passing and SE IEP Exempt From Passing and thus those categories are not plotted on this graph.

**New Jersey High School Proficiency Assessment  
Mathematics Scale Score Mean by Instructional Group (2002-2014)**

	2002	2003	2004	2005	2006	2007	2008	2009	2010	2011	2012	2013	2014
<b>Total</b>	216.4	214.9	218.2	224.1	223.7	220.6	221.2	220.6	221.6	222.8	225.9	227.3	226.1
<b>General Education</b>	222.8	221.8	225.6	231.6		228.0	228.2	227.7	228.6	229.6	232.4	234.2	232.8
<b>SE - IEP Exempt From Passing</b>		171.3	170.9	176.3	176.5	170.8	174.8	173.0	173.7	176.1	180.1	179.8	178.2
<b>SE - Not Exempt From Passing</b>		193.6	197.3	201.7	200.9	198.1	198.4	195.4	196.1	197.6	200.1	200.4	199.3
<b>LEP - Current</b>	182.0	181.8	185.6	192.2	190.4	185.8	187.5	185.0	186.0	190.1	191.3	190.6	190.2
<b>LEP - Former</b>						203.9	202.9	205.5	205.1	201.4	209.2	211.9	208.1

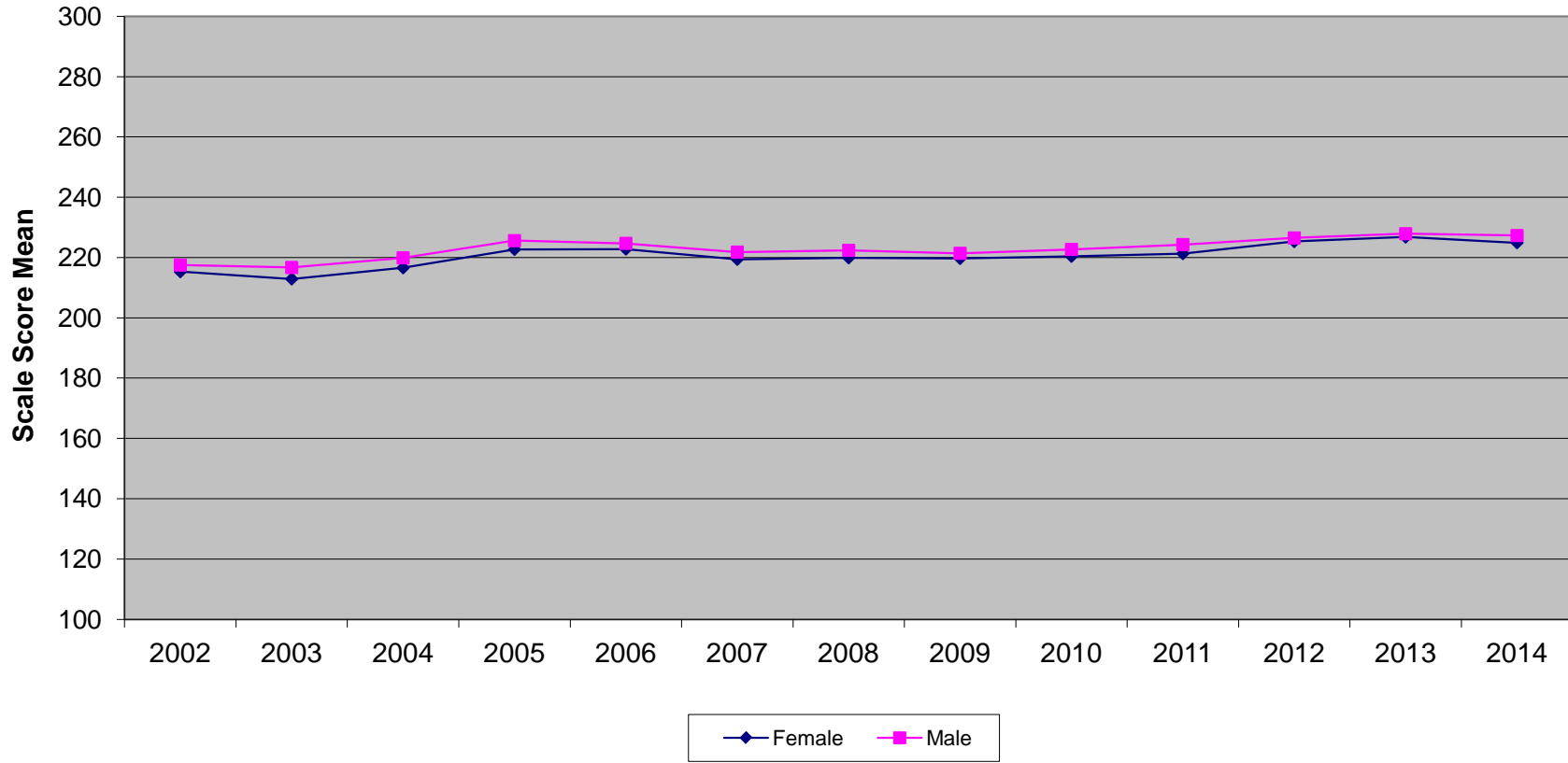
New Jersey High School Proficiency Assessment  
Language Arts Literacy Scale Score Mean by Gender (2002-2014)



**New Jersey High School Proficiency Assessment  
Language Arts Literacy Scale Score Mean by Gender (2002-2014)**

	<b>2002</b>	<b>2003</b>	<b>2004</b>	<b>2005</b>	<b>2006</b>	<b>2007</b>	<b>2008</b>	<b>2009</b>	<b>2010</b>	<b>2011</b>	<b>2012</b>	<b>2013</b>	<b>2014</b>
<b>Female</b>	226.1	225.2	226.9	229.0	228.8	230.3	226.3	226.7	231.3	232.9	234.8	236.6	239.8
<b>Male</b>	215.5	214.4	216.5	219.8	221.0	221.0	215.4	219.3	223.4	227.0	228.9	232.1	233.8

New Jersey High School Proficiency Assessment  
Mathematics Scale Score Mean by Gender (2002-2014)

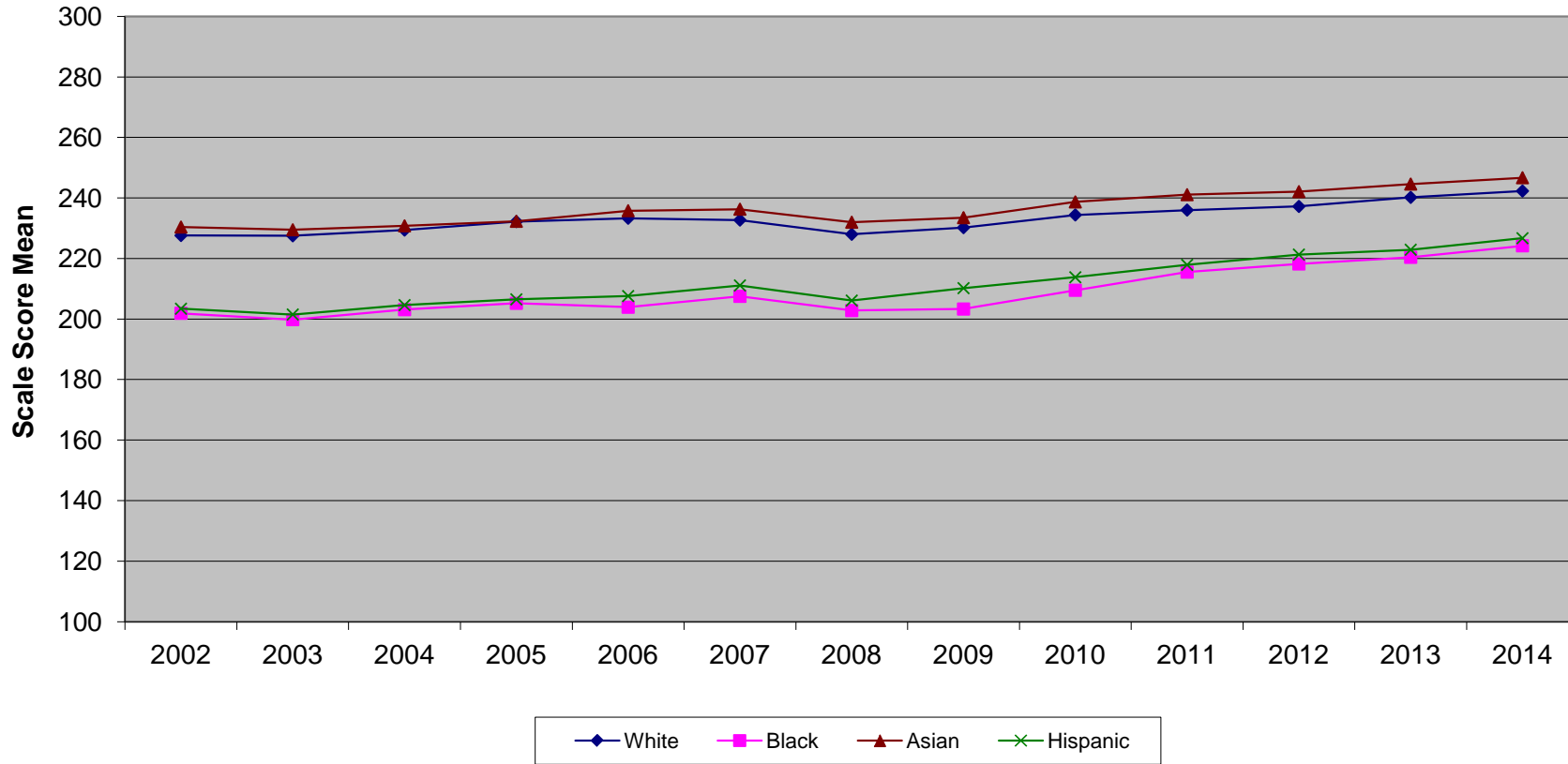


**New Jersey High School Proficiency Assessment  
Mathematics Scale Score Mean by Gender (2002-2014)**

	<b>2002</b>	<b>2003</b>	<b>2004</b>	<b>2005</b>	<b>2006</b>	<b>2007</b>	<b>2008</b>	<b>2009</b>	<b>2010</b>	<b>2011</b>	<b>2012</b>	<b>2013</b>	<b>2014</b>
<b>Female</b>	215.3	212.9	216.6	222.7	222.8	219.4	219.9	219.7	220.4	221.3	225.3	226.8	224.9
<b>Male</b>	217.5	216.7	219.9	225.6	224.7	221.8	222.4	221.4	222.7	224.3	226.5	227.9	227.3



New Jersey High School Proficiency Assessment  
Language Arts Literacy Scale Score Mean by Ethnicity (2002-2014)

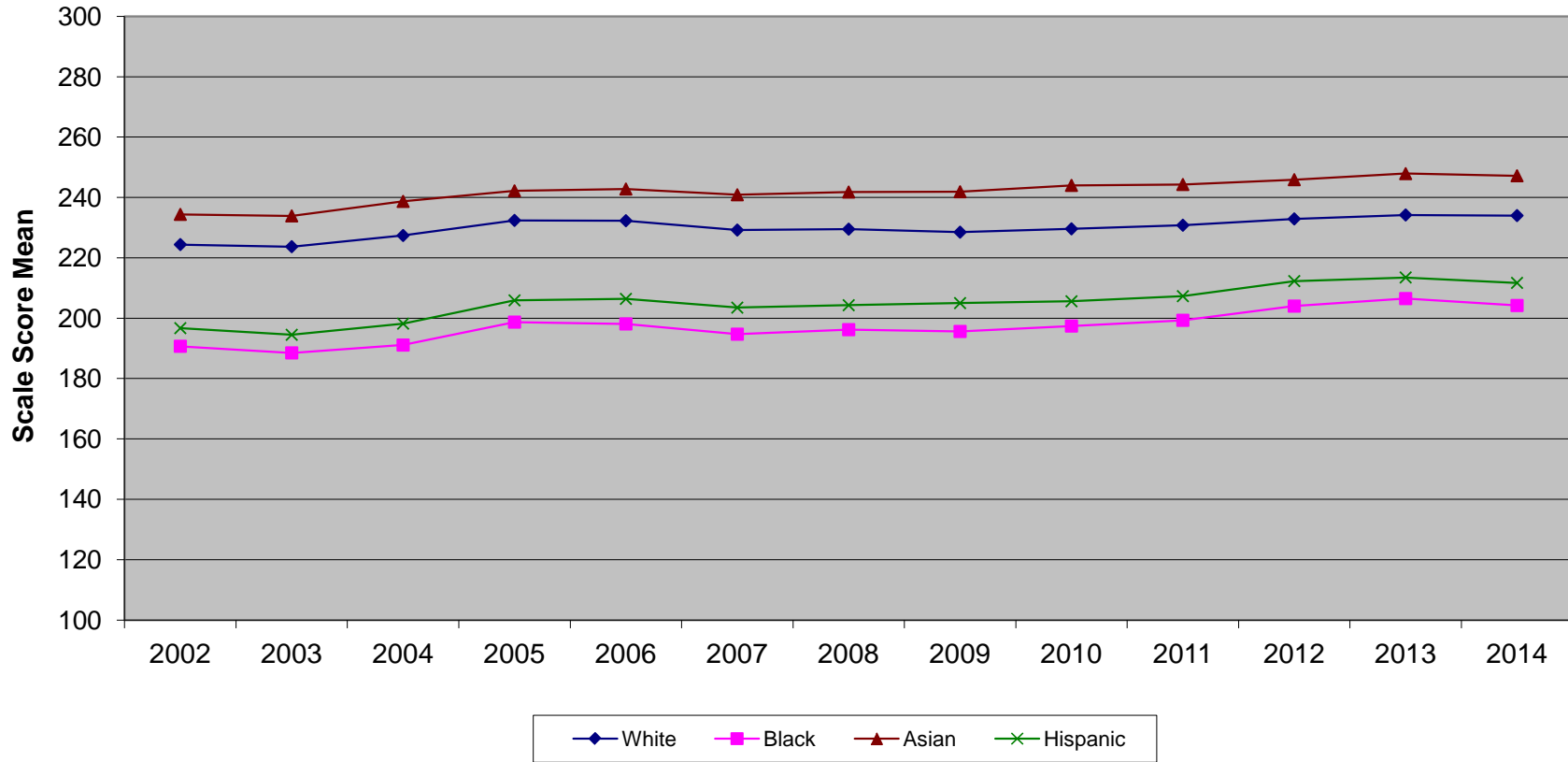


Ethnic codes Pacific Islander, American Indian/Alaskan Native and Other are not shown due to the small number of students in these categories. In 2004 only, students with multiple ethnicities are counted in all ethnic categories that apply, but are excluded completely in all other years.

**New Jersey High School Proficiency Assessment  
Language Arts Literacy Scale Score Mean by Ethnicity (2002-2014)**

	<b>2002</b>	<b>2003</b>	<b>2004</b>	<b>2005</b>	<b>2006</b>	<b>2007</b>	<b>2008</b>	<b>2009</b>	<b>2010</b>	<b>2011</b>	<b>2012</b>	<b>2013</b>	<b>2014</b>
<b>White</b>	227.6	227.5	229.4	232.2	233.3	232.7	228.0	230.2	234.4	236.0	237.2	240.2	242.3
<b>Black</b>	201.9	199.8	203.1	205.2	203.9	207.5	202.8	203.3	209.5	215.5	218.2	220.4	224.2
<b>Asian</b>	230.4	229.5	230.8	232.3	235.8	236.3	232.0	233.5	238.7	241.1	242.1	244.6	246.7
<b>Hispanic</b>	203.4	201.5	204.6	206.5	207.6	211.1	206.1	210.2	213.8	217.9	221.3	222.9	226.7

New Jersey High School Proficiency Assessment  
Mathematics Scale Score Mean by Ethnicity (2002-2014)

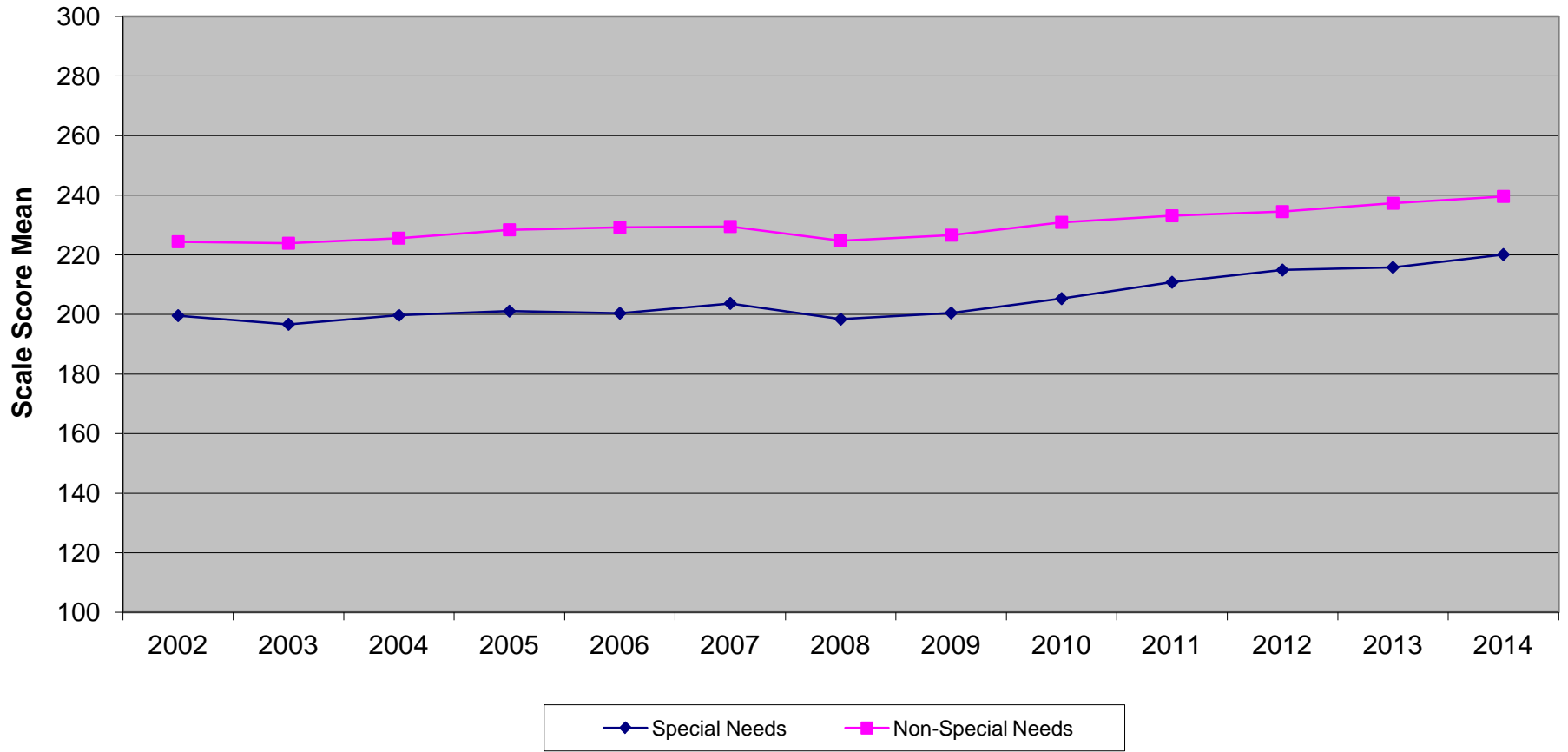


Ethnic codes Pacific Islander, American Indian/Alaskan Native and Other are not shown due to the small number of students in these categories. In 2004 only, students with multiple ethnicities are counted in all ethnic categories that apply, but are excluded completely in all other years.

**New Jersey High School Proficiency Assessment  
Mathematics Scale Score Mean by Ethnicity (2002-2014)**

	<b>2002</b>	<b>2003</b>	<b>2004</b>	<b>2005</b>	<b>2006</b>	<b>2007</b>	<b>2008</b>	<b>2009</b>	<b>2010</b>	<b>2011</b>	<b>2012</b>	<b>2013</b>	<b>2014</b>
<b>White</b>	224.4	223.7	227.4	232.4	232.3	229.2	229.5	228.5	229.6	230.8	232.9	234.2	234.0
<b>Black</b>	190.7	188.5	191.1	198.7	198.1	194.7	196.2	195.6	197.4	199.3	204.0	206.5	204.2
<b>Asian</b>	234.4	233.9	238.7	242.2	242.8	240.9	241.8	241.9	244.0	244.3	245.9	247.9	247.2
<b>Hispanic</b>	196.7	194.5	198.2	205.9	206.4	203.5	204.3	205.0	205.6	207.3	212.3	213.5	211.7

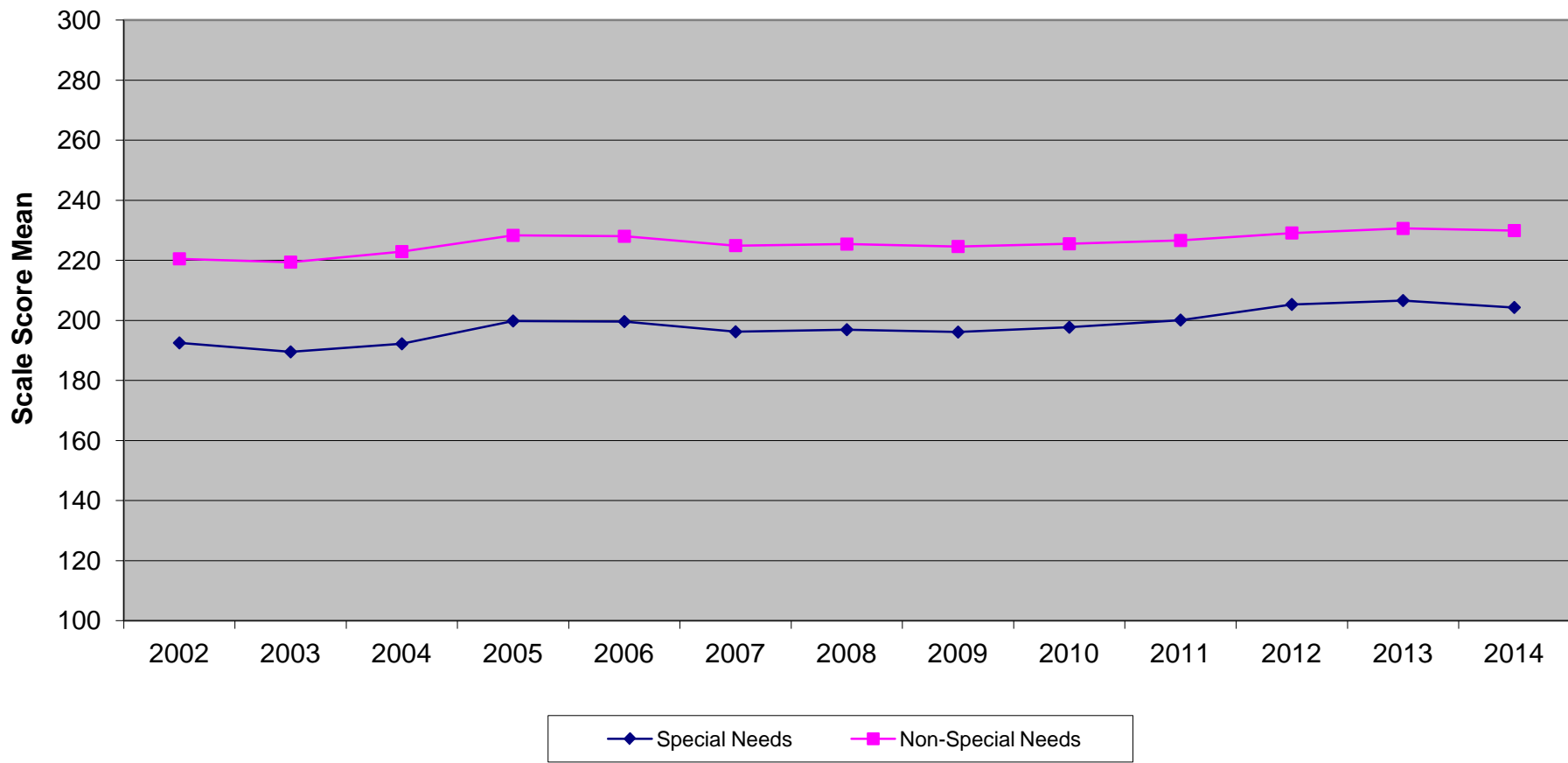
New Jersey High School Proficiency Assessment  
Language Arts Literacy Scale Score Mean  
Special Needs vs Non-Special Needs (2002-2014)



**New Jersey High School Proficiency Assessment  
Language Arts Literacy Special Needs vs Non-Special Needs (2002-2014)**

	<b>2002</b>	<b>2003</b>	<b>2004</b>	<b>2005</b>	<b>2006</b>	<b>2007</b>	<b>2008</b>	<b>2009</b>	<b>2010</b>	<b>2011</b>	<b>2012</b>	<b>2013</b>	<b>2014</b>
<b>Special Needs</b>	199.6	196.7	199.7	201.1	200.4	203.7	198.4	200.5	205.3	210.8	214.9	215.8	220.1
<b>Non-Special Needs</b>	224.4	223.9	225.6	228.4	229.2	229.5	224.7	226.6	230.9	233.1	234.5	237.3	239.6

New Jersey High School Proficiency Assessment  
Mathematics Scale Score Mean  
Special Needs vs Non-Special Needs (2002-2014)

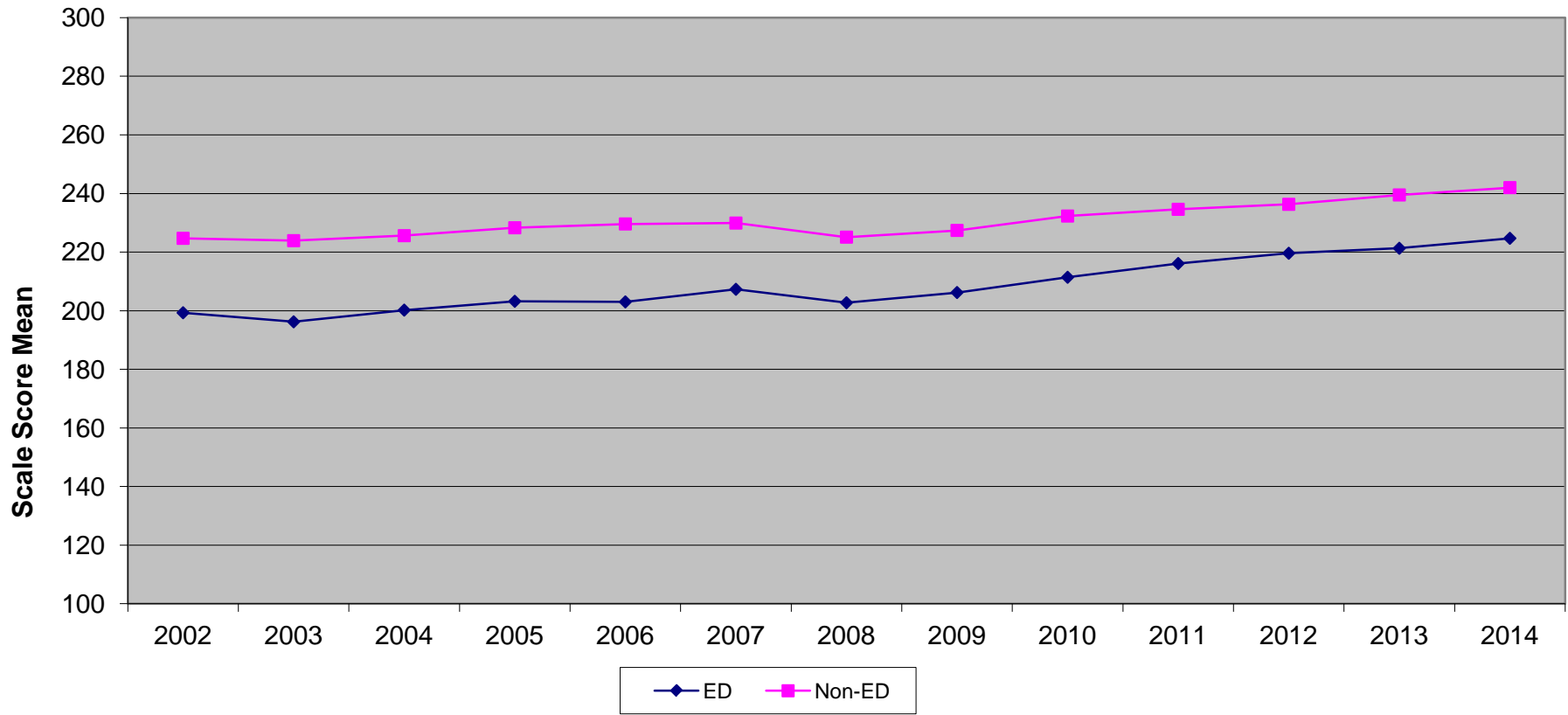


**New Jersey High School Proficiency Assessment  
Mathematics Special Needs vs Non-Special Needs (2002-2014)**

	<b>2002</b>	<b>2003</b>	<b>2004</b>	<b>2005</b>	<b>2006</b>	<b>2007</b>	<b>2008</b>	<b>2009</b>	<b>2010</b>	<b>2011</b>	<b>2012</b>	<b>2013</b>	<b>2014</b>
<b>Special Needs</b>	192.5	189.5	192.2	199.8	199.6	196.2	196.9	196.1	197.7	200.1	205.3	206.6	204.3
<b>Non-Special Needs</b>	220.5	219.4	222.9	228.3	228.0	224.9	225.4	224.6	225.5	226.6	229.1	230.6	229.9



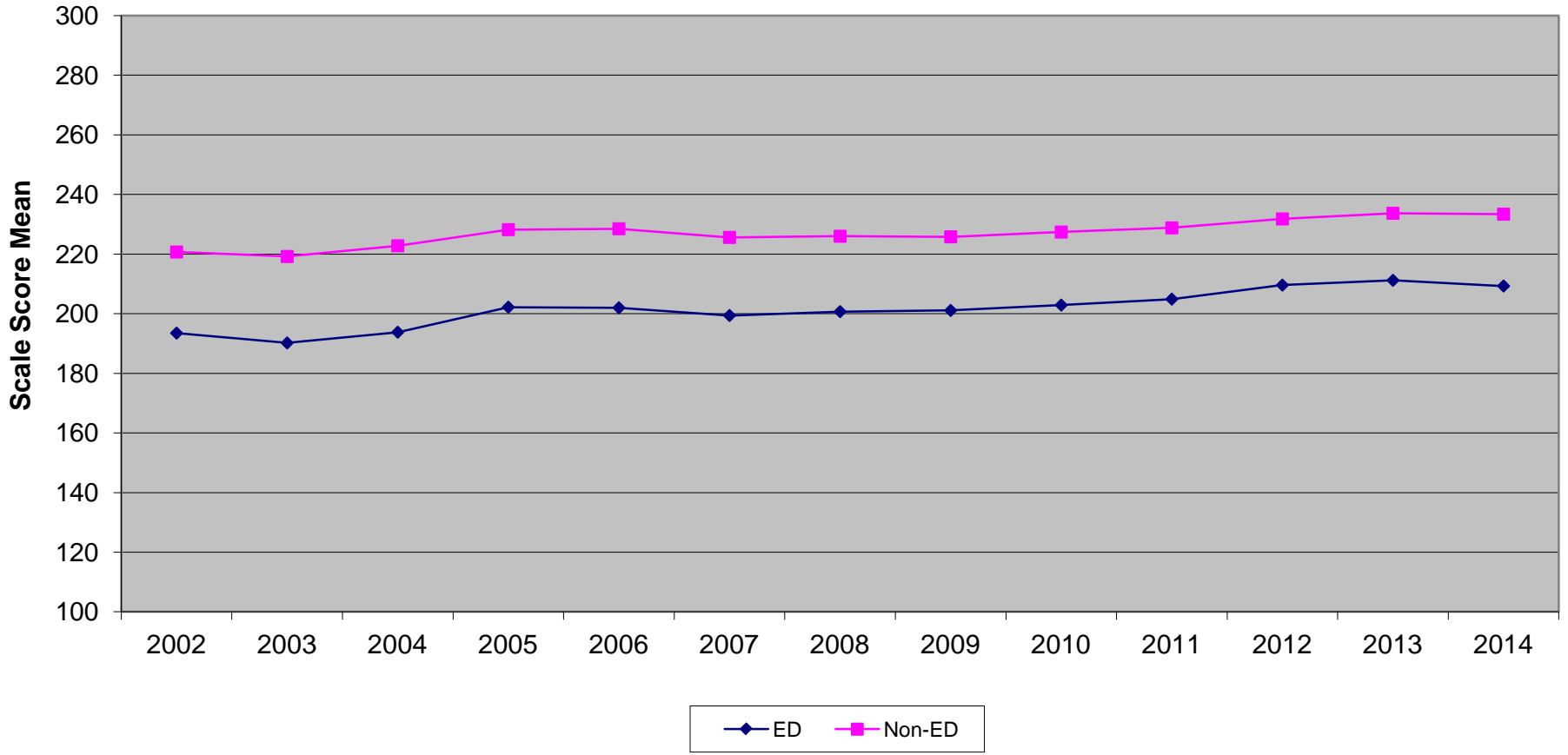
New Jersey High School Proficiency Assessment  
Language Arts Literacy Scale Score Mean  
Economically Disadvantaged vs Non-Economically Disadvantaged (2002-2014)



**New Jersey High School Proficiency Assessment**  
**Language Arts Literacy Economically Disadvantaged vs Non-Economically Disadvantaged (2002-2014)**

	<b>2002</b>	<b>2003</b>	<b>2004</b>	<b>2005</b>	<b>2006</b>	<b>2007</b>	<b>2008</b>	<b>2009</b>	<b>2010</b>	<b>2011</b>	<b>2012</b>	<b>2013</b>	<b>2014</b>
<b>ED</b>	199.3	196.2	200.2	203.2	203.0	207.3	202.7	206.2	211.4	216.1	219.6	221.3	224.7
<b>Non-ED</b>	224.7	223.9	225.6	228.3	229.6	229.9	225.1	227.4	232.3	234.6	236.3	239.5	242.0

New Jersey High School Proficiency Assessment  
Mathematics Scale Score Mean  
Economically Disadvantaged vs Non-Economically Disadvantaged (2002-2014)



**New Jersey High School Proficiency Assessment  
Mathematics Economically Disadvantaged vs Non-Economically Disadvantaged (2002-2014)**

	<b>2002</b>	<b>2003</b>	<b>2004</b>	<b>2005</b>	<b>2006</b>	<b>2007</b>	<b>2008</b>	<b>2009</b>	<b>2010</b>	<b>2011</b>	<b>2012</b>	<b>2013</b>	<b>2014</b>
<b>ED</b>	193.5	190.2	193.8	202.2	202.0	199.4	200.7	201.1	202.9	204.9	209.6	211.2	209.3
<b>Non-ED</b>	220.7	219.2	222.8	228.2	228.5	225.6	226.0	225.8	227.4	228.8	231.8	233.7	233.4