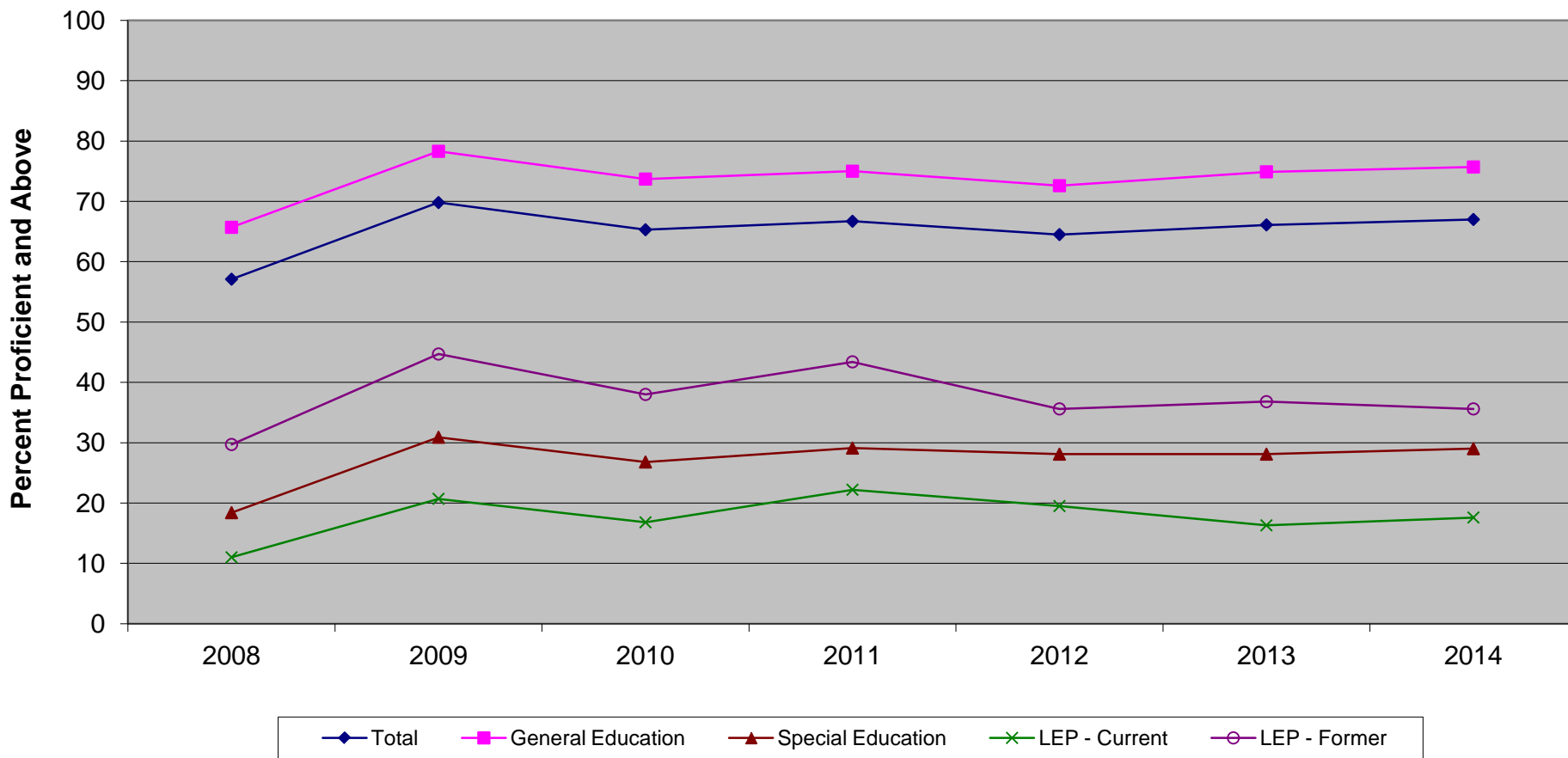


**New Jersey Assessment of Skills and Knowledge
Grade 6 English Language Arts* Proficient and Above
by Instructional Groups (2008 - 2014)**



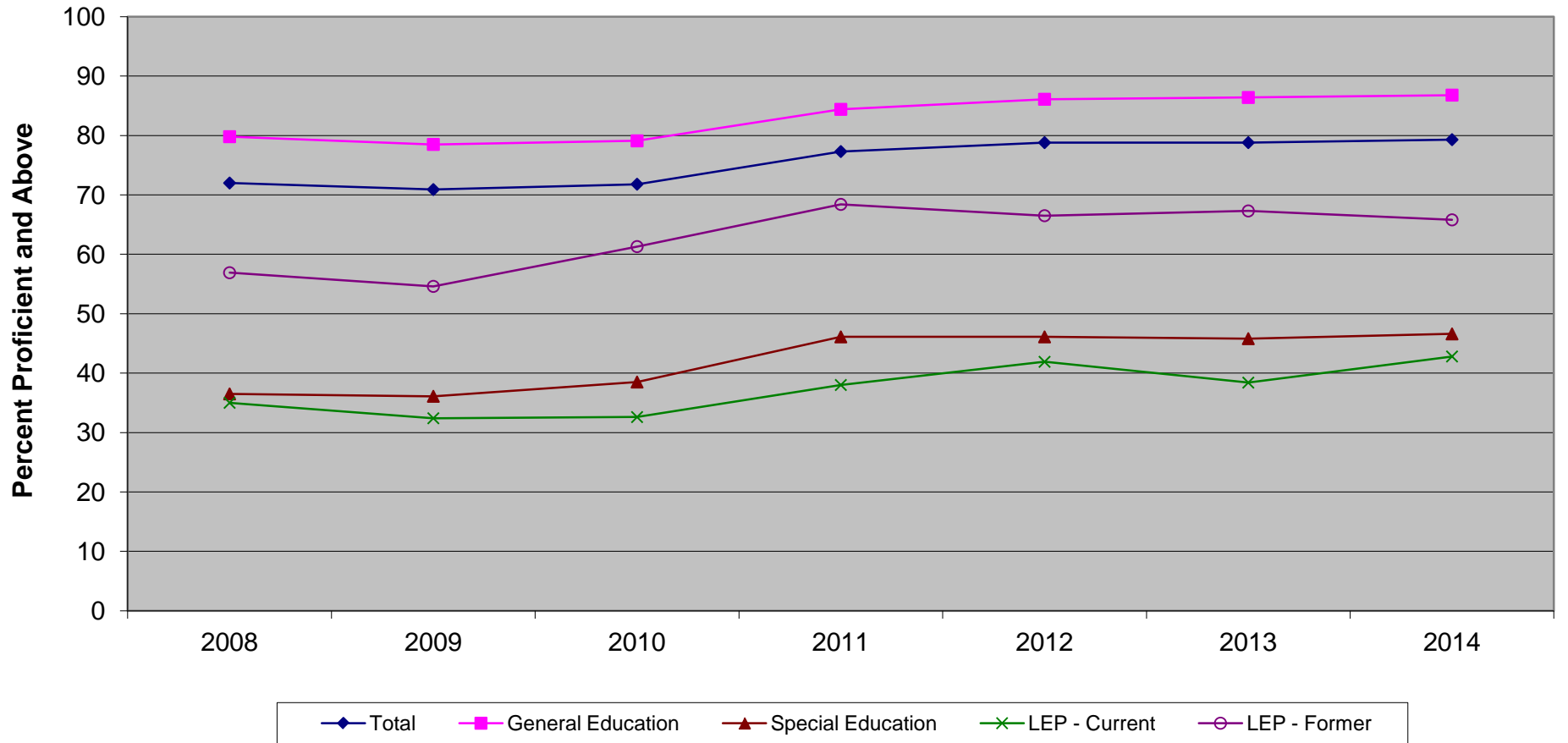
* formerly Language Arts Literacy

**New Jersey Assessment of Skills and Knowledge
Grade 6 English Language Arts* Proficient and Above
by Instructional Groups (2008 - 2014)**

| | 2008 | 2009 | 2010 | 2011 | 2012 | 2013 | 2014 |
|-------------------|-------------|-------------|-------------|-------------|-------------|-------------|-------------|
| Total | 57.1 | 69.8 | 65.3 | 66.7 | 64.5 | 66.1 | 67.0 |
| General Education | 65.7 | 78.3 | 73.7 | 75.0 | 72.6 | 74.9 | 75.7 |
| Special Education | 18.4 | 30.9 | 26.8 | 29.1 | 28.1 | 28.1 | 29.0 |
| LEP - Current | 11.0 | 20.7 | 16.8 | 22.2 | 19.5 | 16.3 | 17.6 |
| LEP - Former | 29.7 | 44.7 | 38.0 | 43.4 | 35.6 | 36.8 | 35.6 |

* formerly Language Arts Literacy

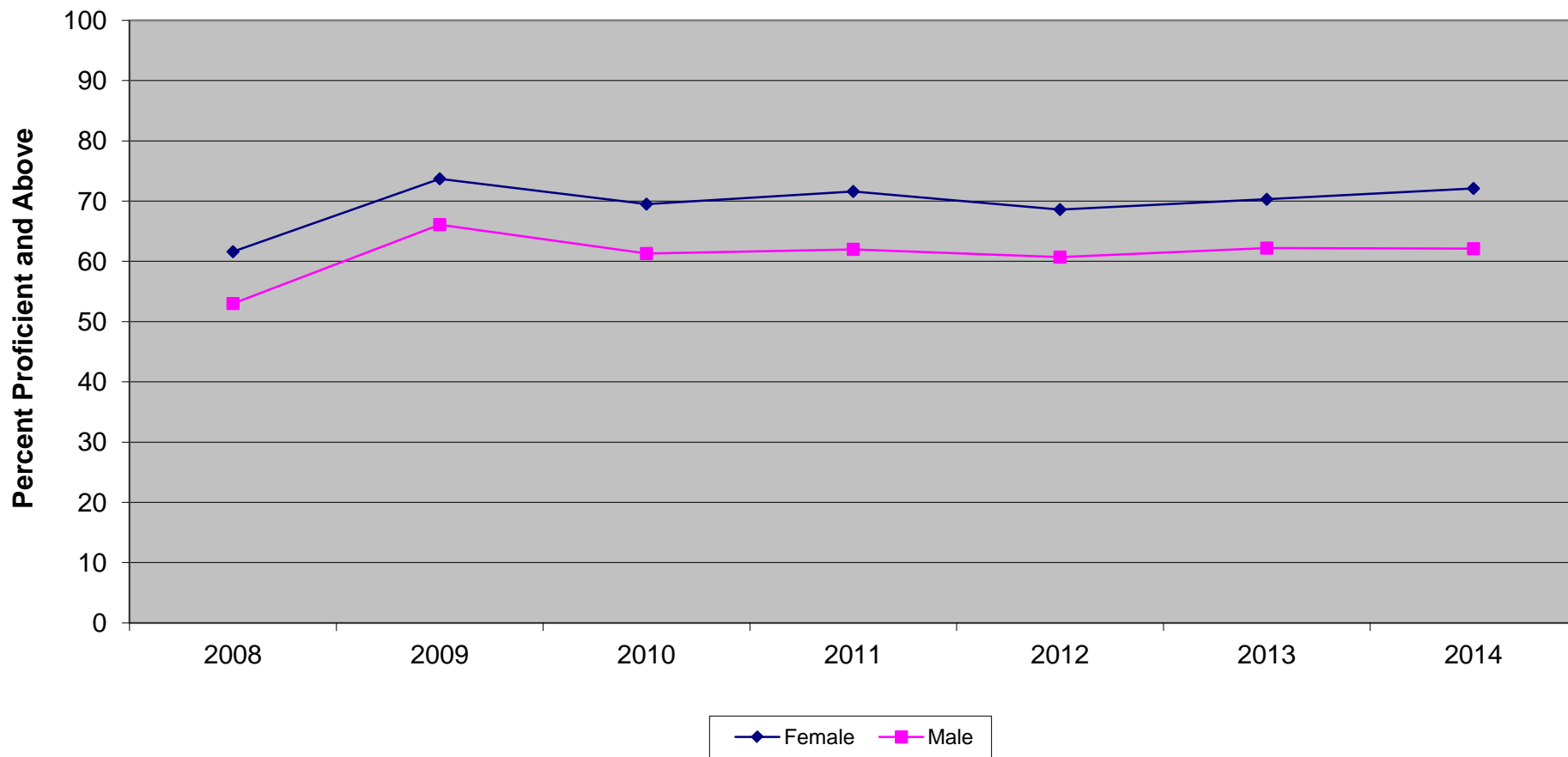
New Jersey Assessment of Skills and Knowledge
Grade 6 Mathematics Proficient and Above
by Instructional Groups (2008 - 2014)



**New Jersey Assessment of Skills and Knowledge
Grade 6 Mathematics Proficient and Above
by Instructional Groups (2008 - 2014)**

| | 2008 | 2009 | 2010 | 2011 | 2012 | 2013 | 2014 |
|-------------------|-------------|-------------|-------------|-------------|-------------|-------------|-------------|
| Total | 72.0 | 70.9 | 71.8 | 77.3 | 78.8 | 78.8 | 79.3 |
| General Education | 79.8 | 78.5 | 79.1 | 84.4 | 86.1 | 86.4 | 86.8 |
| Special Education | 36.5 | 36.1 | 38.5 | 46.1 | 46.1 | 45.8 | 46.6 |
| LEP - Current | 35.0 | 32.4 | 32.6 | 38.0 | 41.9 | 38.4 | 42.8 |
| LEP - Former | 56.9 | 54.6 | 61.3 | 68.4 | 66.5 | 67.3 | 65.8 |

New Jersey Assessment of Skills and Knowledge
Grade 6 English Language Arts* Proficient and Above
by Gender (2008 - 2014)



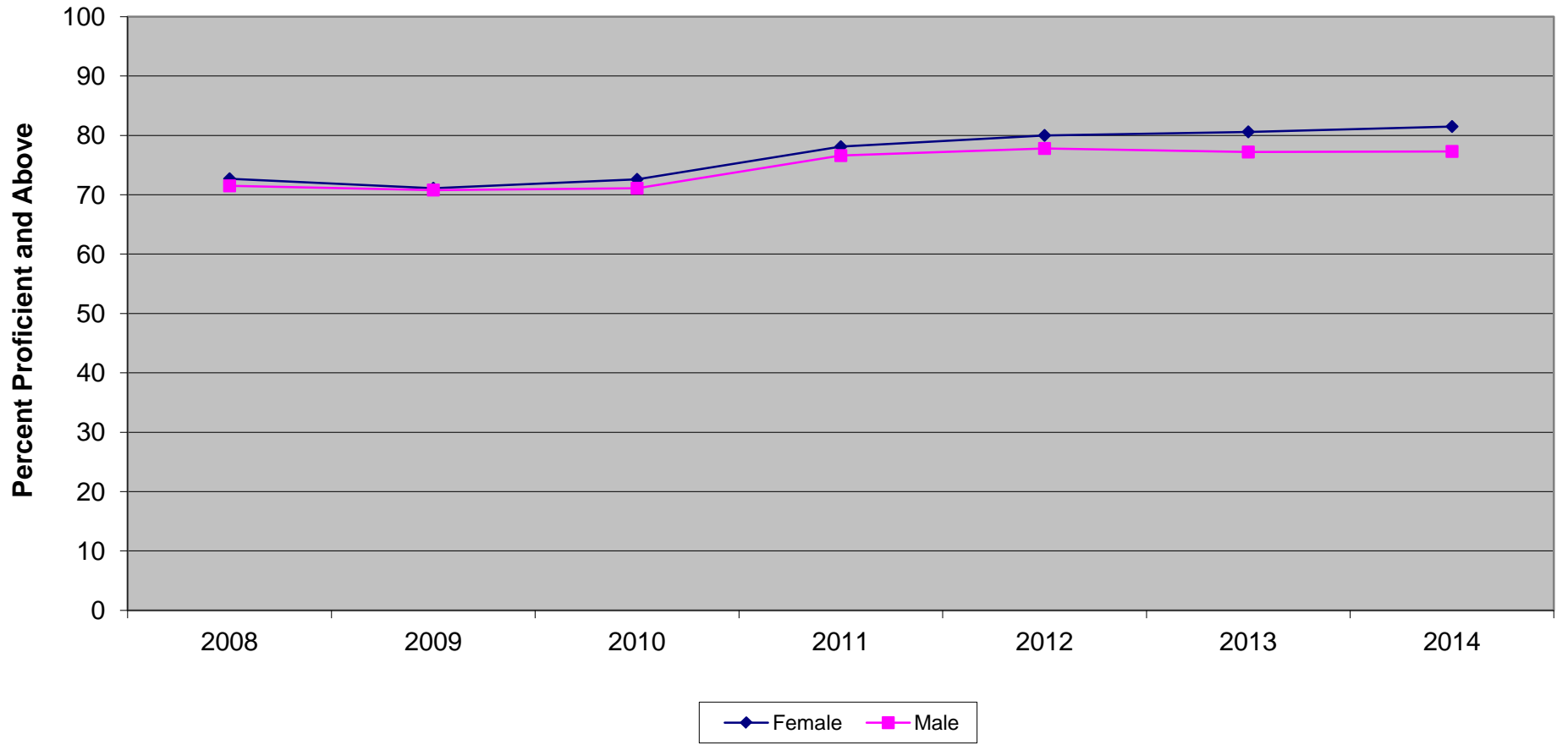
* formerly Language Arts Literacy

**New Jersey Assessment of Skills and Knowledge
Grade 6 English Language Arts* Proficient and Above
by Gender (2008 - 2014)**

| | 2008 | 2009 | 2010 | 2011 | 2012 | 2013 | 2014 |
|--------|-------------|-------------|-------------|-------------|-------------|-------------|-------------|
| Female | 61.6 | 73.7 | 69.5 | 71.6 | 68.6 | 70.3 | 72.1 |
| Male | 53.0 | 66.1 | 61.3 | 62.0 | 60.7 | 62.2 | 62.1 |

* formerly Language Arts Literacy

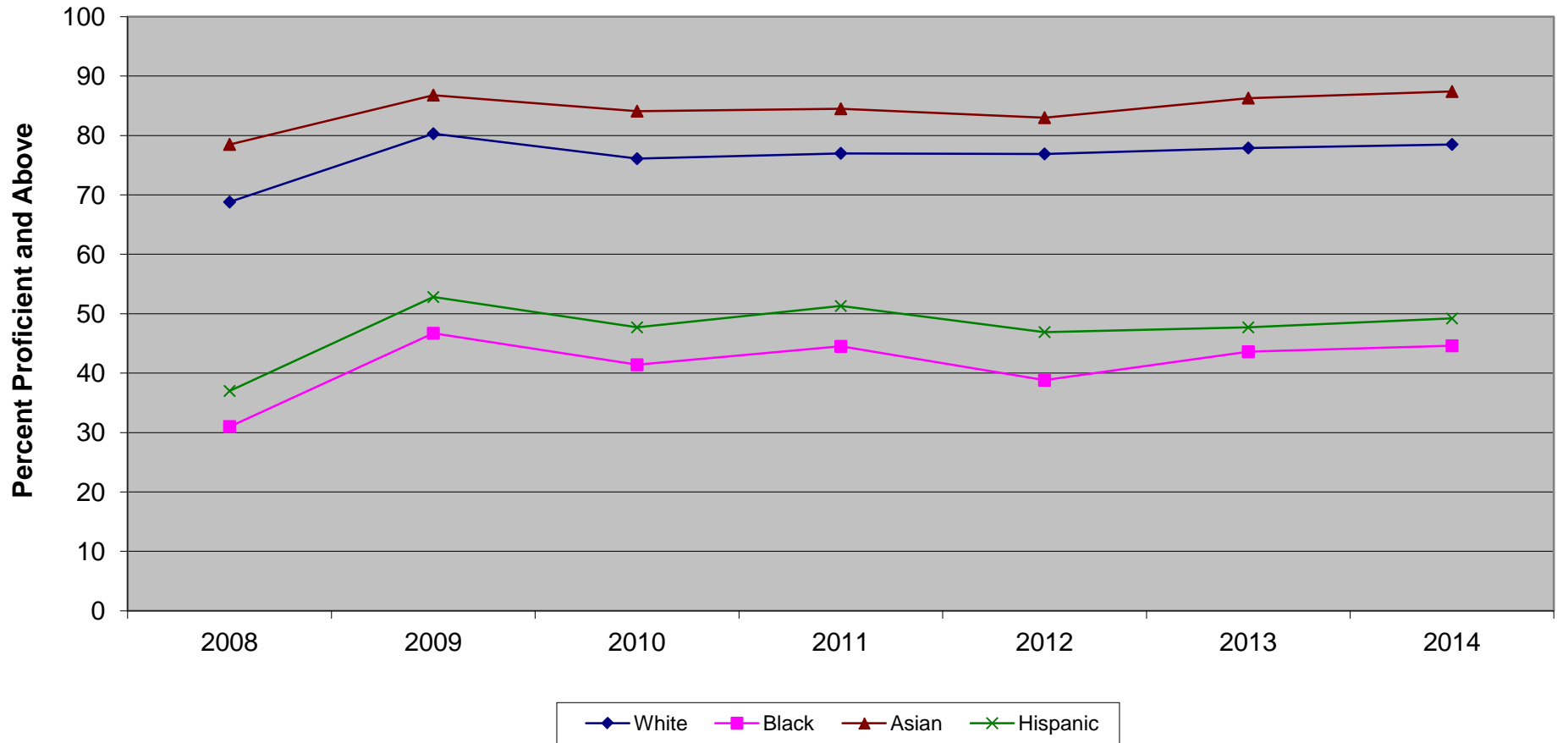
New Jersey Assessment of Skills and Knowledge
Grade 6 Mathematics Proficient and Above
by Gender (2008 - 2014)



**New Jersey Assessment of Skills and Knowledge
Grade 6 Mathematics Proficient and Above
by Gender (2008 - 2014)**

| | 2008 | 2009 | 2010 | 2011 | 2012 | 2013 | 2014 |
|--------|-------------|-------------|-------------|-------------|-------------|-------------|-------------|
| Female | 72.7 | 71.1 | 72.6 | 78.1 | 80.0 | 80.6 | 81.5 |
| Male | 71.5 | 70.8 | 71.1 | 76.6 | 77.8 | 77.2 | 77.3 |

New Jersey Assessment of Skills and Knowledge
Grade 6 English Language Arts* Proficient and Above
by Ethnicity (2008 - 2014)



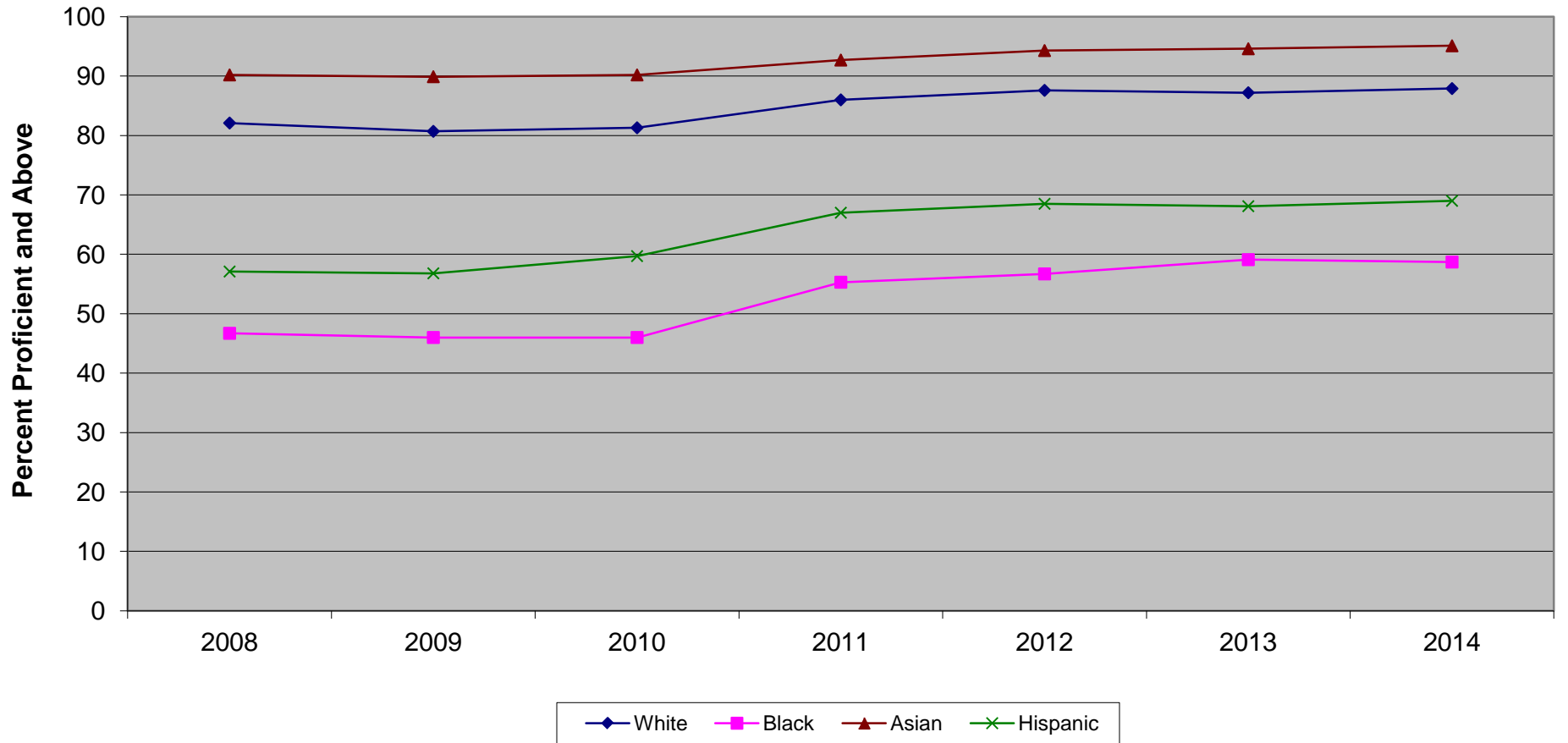
* formerly Language Arts Literacy

**New Jersey Assessment of Skills and Knowledge
Grade 6 English Language Arts* Proficient and Above
by Ethnicity (2008 - 2014)**

| | 2008 | 2009 | 2010 | 2011 | 2012 | 2013 | 2014 |
|----------|-------------|-------------|-------------|-------------|-------------|-------------|-------------|
| White | 68.8 | 80.3 | 76.1 | 77.0 | 76.9 | 77.9 | 78.5 |
| Black | 31.0 | 46.7 | 41.4 | 44.5 | 38.8 | 43.6 | 44.6 |
| Asian | 78.5 | 86.8 | 84.1 | 84.5 | 83.0 | 86.3 | 87.4 |
| Hispanic | 37.0 | 52.8 | 47.7 | 51.3 | 46.9 | 47.7 | 49.2 |

* formerly Language Arts Literacy

New Jersey Assessment of Skills and Knowledge
Grade 6 Mathematics Proficient and Above
by Ethnicity (2008 - 2014)

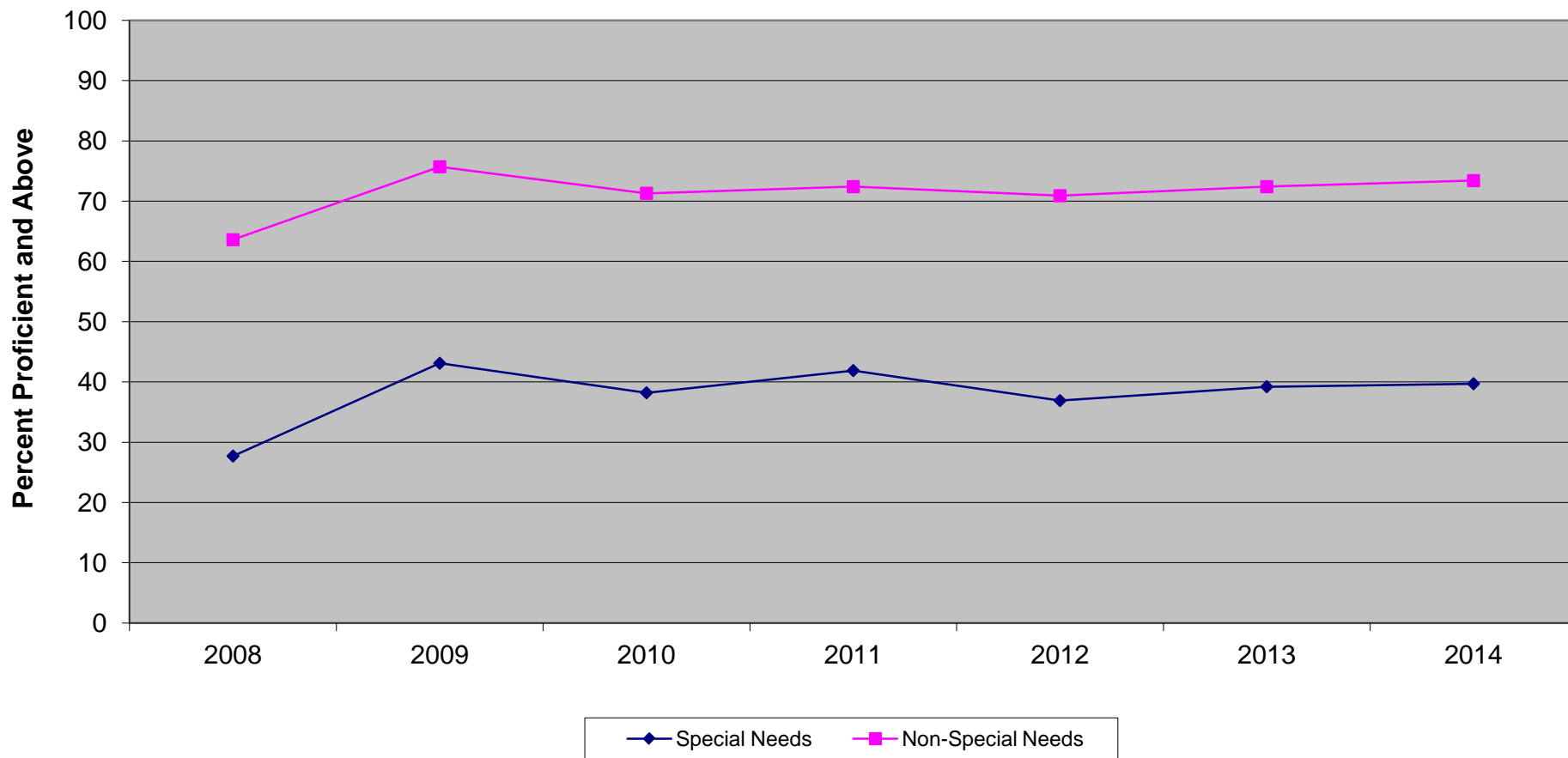


Ethnic codes Pacific Islander, American Indian/Alaskan Native and Other are not shown due to the small number of students in these categories.

**New Jersey Assessment of Skills and Knowledge
Grade 6 Mathematics Proficient and Above
by Ethnicity (2008 - 2014)**

| | 2008 | 2009 | 2010 | 2011 | 2012 | 2013 | 2014 |
|----------|-------------|-------------|-------------|-------------|-------------|-------------|-------------|
| White | 82.1 | 80.7 | 81.3 | 86.0 | 87.6 | 87.2 | 87.9 |
| Black | 46.7 | 46.0 | 46.0 | 55.3 | 56.7 | 59.1 | 58.7 |
| Asian | 90.2 | 89.9 | 90.2 | 92.7 | 94.3 | 94.6 | 95.1 |
| Hispanic | 57.1 | 56.8 | 59.7 | 67.0 | 68.5 | 68.1 | 69.0 |

New Jersey Assessment of Skills and Knowledge
Grade 6 English Language Arts* Proficient and Above
Special Needs vs Non-Special Needs (2008 - 2014)



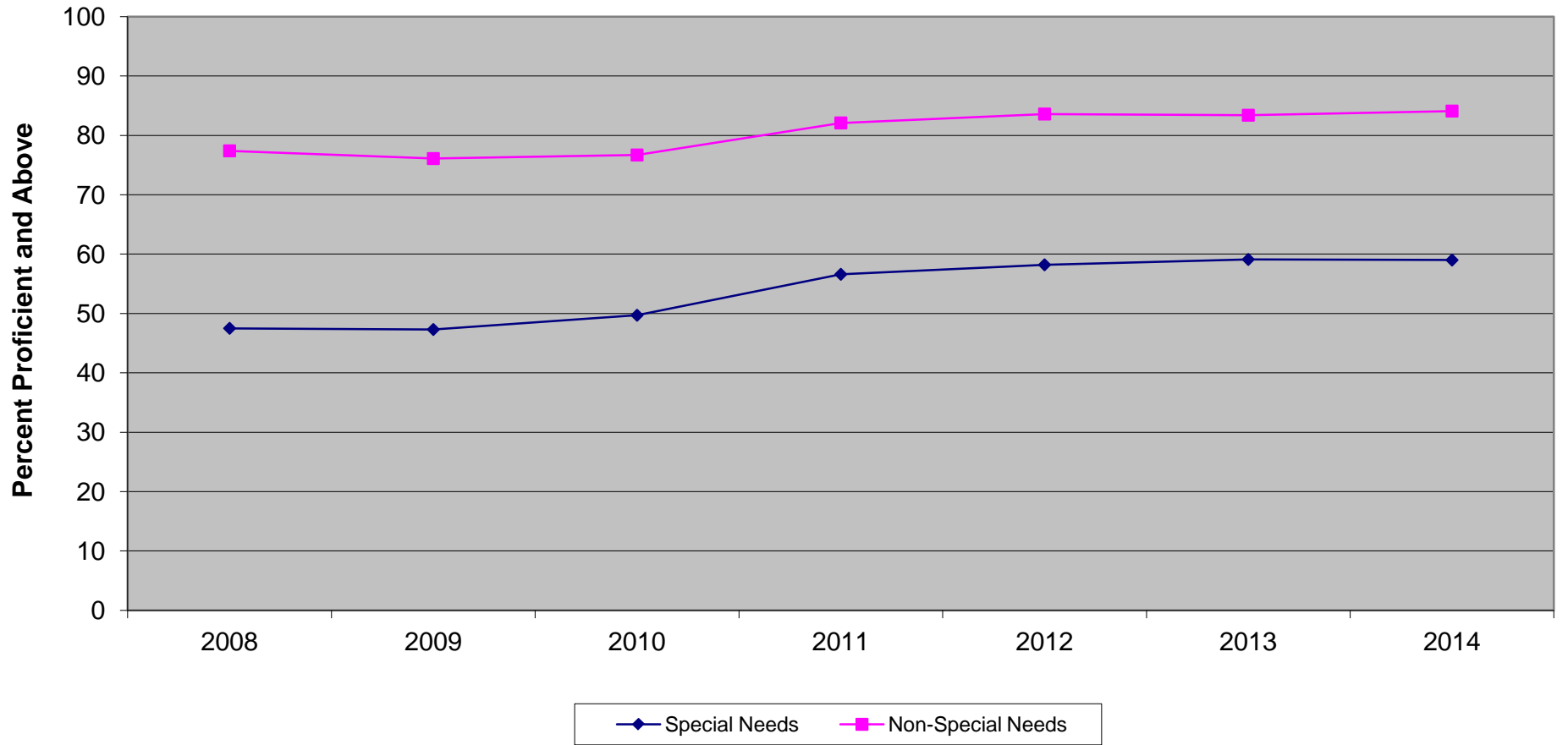
* formerly Language Arts Literacy

**New Jersey Assessment of Skills and Knowledge
Grade 6 English Language Arts* Proficient and Above
Special Needs vs Non-Special Needs (2008 - 2014)**

| | 2008 | 2009 | 2010 | 2011 | 2012 | 2013 | 2014 |
|-------------------|-------------|-------------|-------------|-------------|-------------|-------------|-------------|
| Special Needs | 27.7 | 43.1 | 38.2 | 41.9 | 36.9 | 39.2 | 39.7 |
| Non-Special Needs | 63.6 | 75.7 | 71.3 | 72.4 | 70.9 | 72.4 | 73.4 |

* formerly Language Arts Literacy

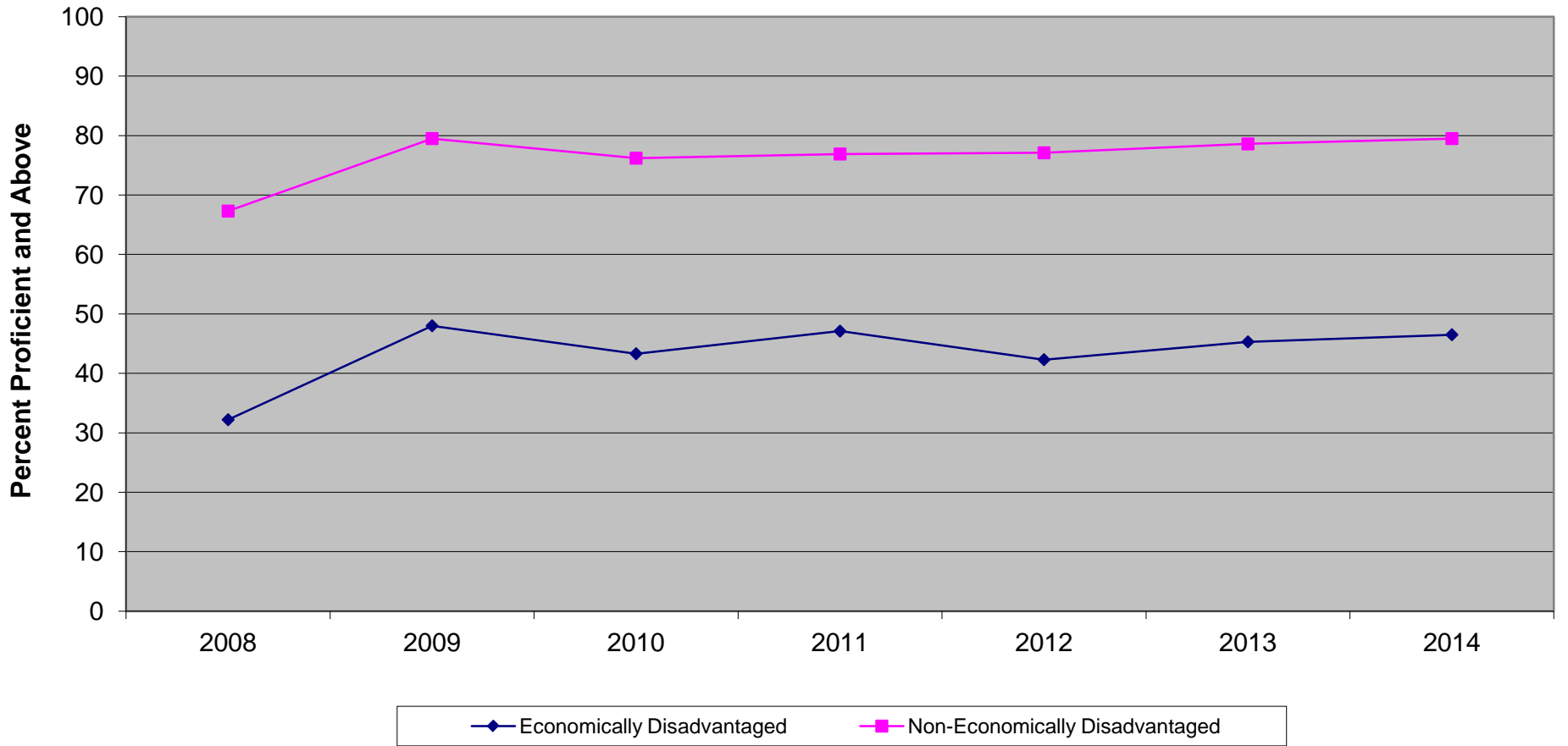
New Jersey Assessment of Skills and Knowledge
Grade 6 Mathematics Proficient and Above
Special Needs vs Non-Special Needs (2008 - 2014)



**New Jersey Assessment of Skills and Knowledge
Grade 6 Mathematics Proficient and Above
Special Needs vs Non-Special Needs (2008 - 2014)**

| | 2008 | 2009 | 2010 | 2011 | 2012 | 2013 | 2014 |
|-------------------|-------------|-------------|-------------|-------------|-------------|-------------|-------------|
| Special Needs | 47.5 | 47.3 | 49.7 | 56.6 | 58.2 | 59.1 | 59.0 |
| Non-Special Needs | 77.4 | 76.1 | 76.7 | 82.1 | 83.6 | 83.4 | 84.1 |

**New Jersey Assessment of Skills and Knowledge
Grade 6 English Language Arts* Proficient and Above
Economically Disadvantaged vs Non-Economically Disadvantaged (2008 - 2014)**



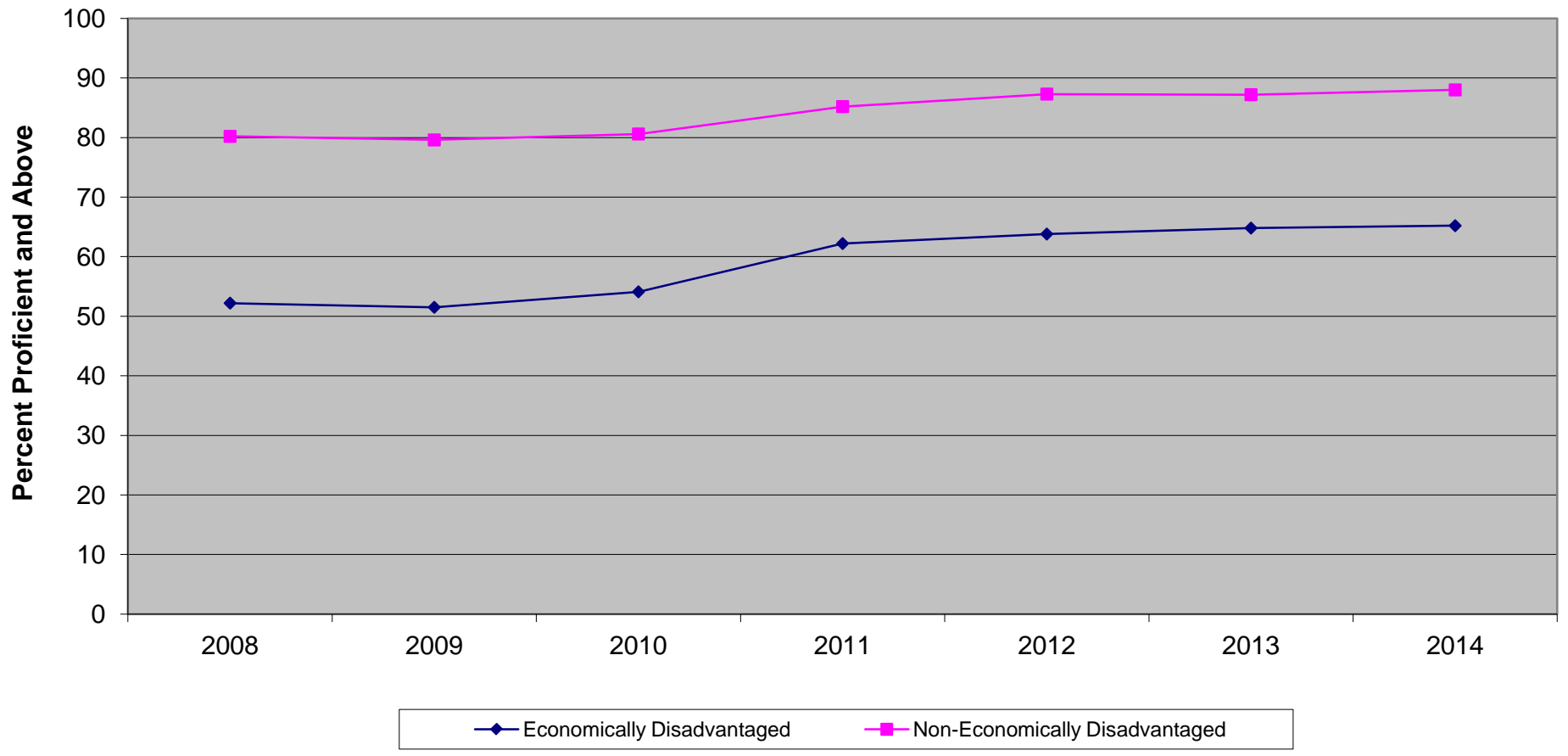
* formerly Language Arts Literacy

**New Jersey Assessment of Skills and Knowledge
Grade 6 English Language Arts* Proficient and Above
Economically Disadvantaged vs Non-Economically Disadvantaged (2008 - 2014)**

| | 2008 | 2009 | 2010 | 2011 | 2012 | 2013 | 2014 |
|--------------------------------|-------------|-------------|-------------|-------------|-------------|-------------|-------------|
| Economically Disadvantaged | 32.2 | 48.0 | 43.3 | 47.1 | 42.3 | 45.3 | 46.5 |
| Non-Economically Disadvantaged | 67.3 | 79.5 | 76.2 | 76.9 | 77.1 | 78.6 | 79.5 |

* formerly Language Arts Literacy

New Jersey Assessment of Skills and Knowledge
Grade 6 Mathematics Proficient and Above
Economically Disadvantaged vs Non-Economically Disadvantaged (2008 - 2014)



**New Jersey Assessment of Skills and Knowledge
Grade 6 Mathematics Proficient and Above
Economically Disadvantaged vs Non-Economically Disadvantaged (2008 - 2014)**

| | 2008 | 2009 | 2010 | 2011 | 2012 | 2013 | 2014 |
|--------------------------------|-------------|-------------|-------------|-------------|-------------|-------------|-------------|
| Economically Disadvantaged | 52.2 | 51.5 | 54.1 | 62.2 | 63.8 | 64.8 | 65.2 |
| Non-Economically Disadvantaged | 80.2 | 79.6 | 80.6 | 85.2 | 87.3 | 87.2 | 88.0 |