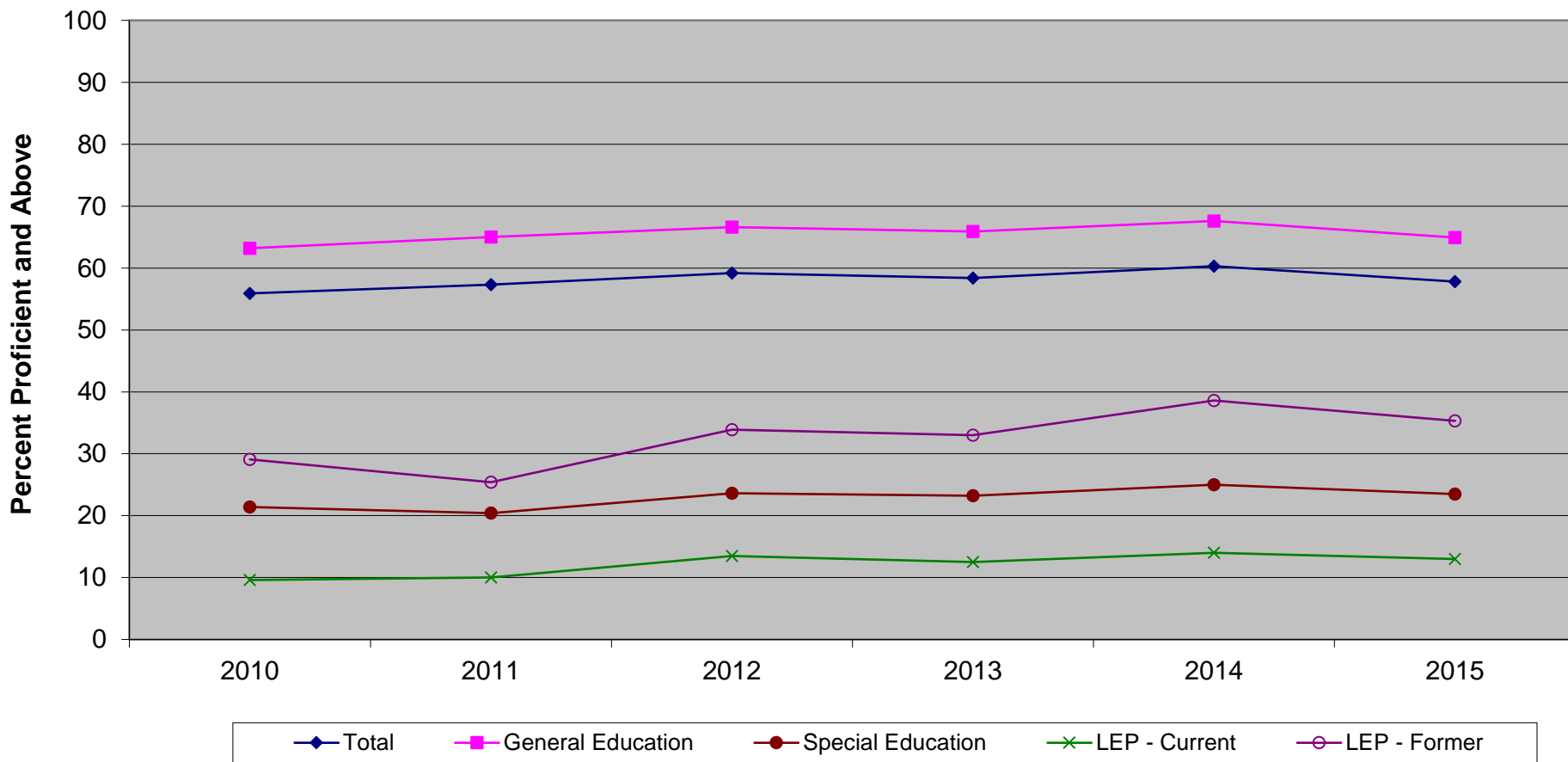


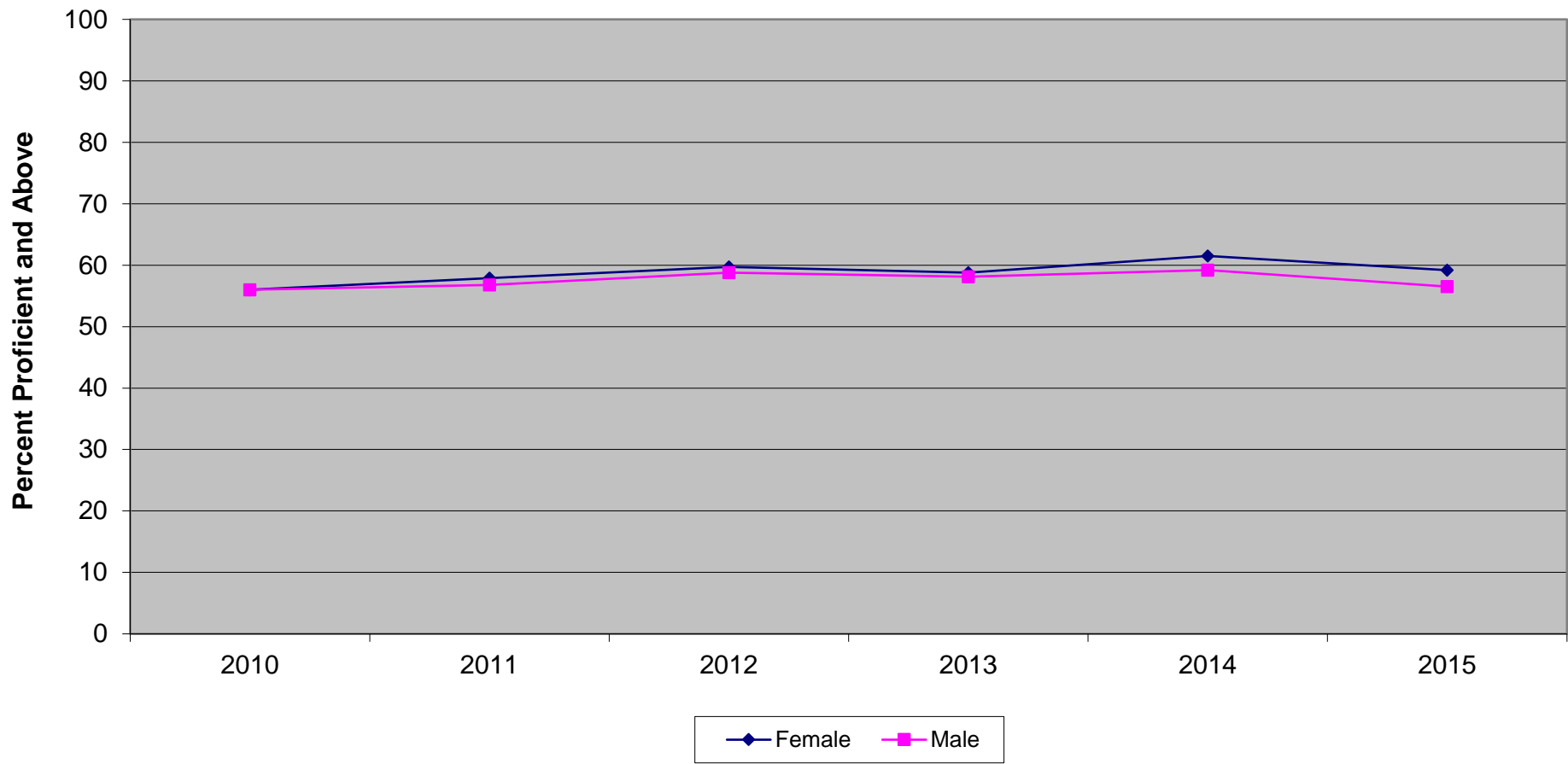
New Jersey Biology Competency Test  
Proficient and Above by Instructional Group (2010-2015)



**New Jersey Biology Competency Test  
Proficient and Above by Instructional Group (2010-2015)**

	<b>2010</b>	<b>2011</b>	<b>2012</b>	<b>2013</b>	<b>2014</b>	<b>2015</b>
<b>Total</b>	55.9	57.3	59.2	58.4	60.3	57.8
<b>General Education</b>	63.2	65.0	66.6	65.9	67.6	64.9
<b>Special Education</b>	21.4	20.4	23.6	23.2	25.0	23.5
<b>LEP - Current</b>	9.6	10.0	13.5	12.5	14.0	13.0
<b>LEP - Former</b>	29.1	25.4	33.9	33.0	38.6	35.3

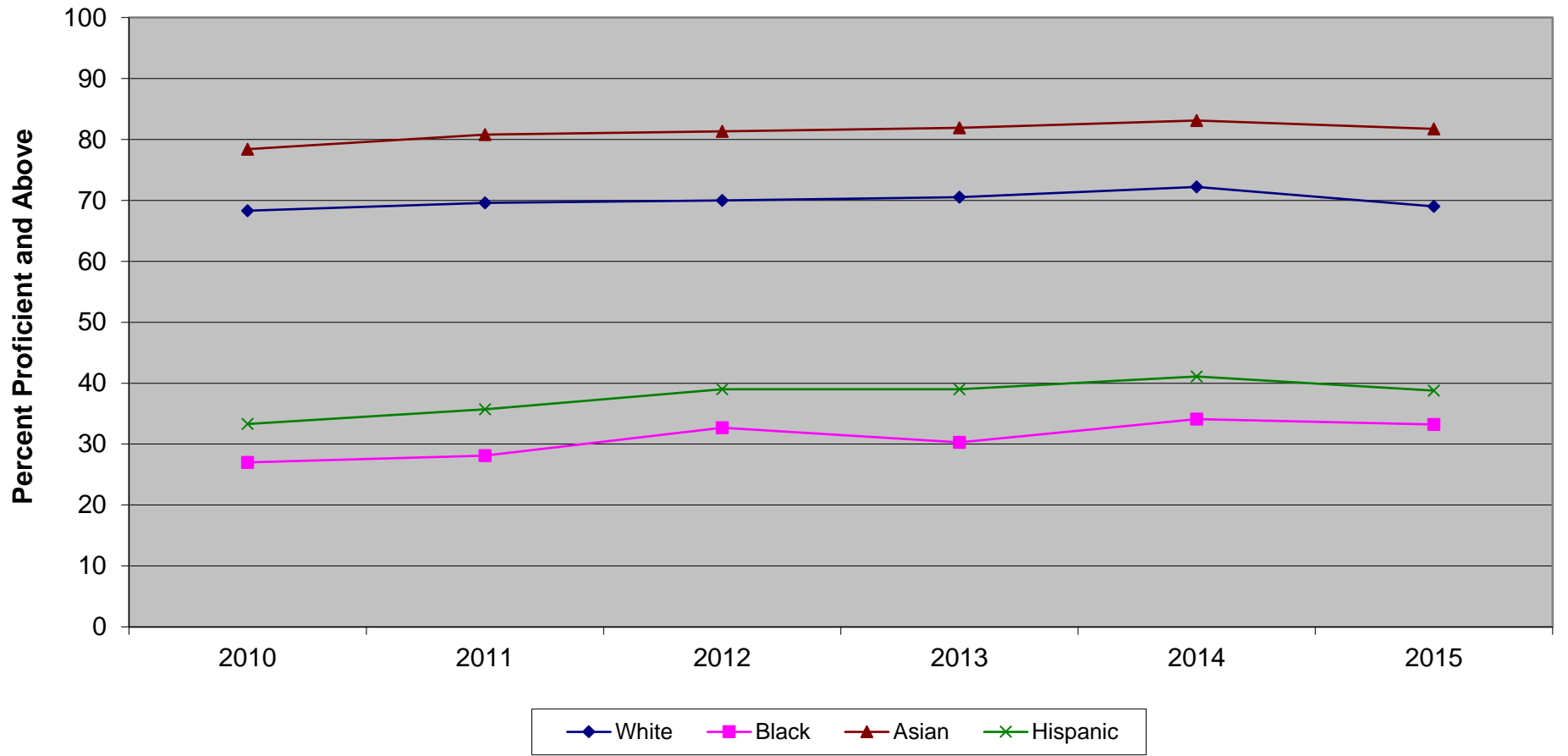
New Jersey Biology Competency Test  
Proficient and Above by Gender (2010-2015)



**New Jersey Biology Competency Test  
Proficient and Above by Gender (2010-2015)**

	<b>2010</b>	<b>2011</b>	<b>2012</b>	<b>2013</b>	<b>2014</b>	<b>2015</b>
<b>Female</b>	56.0	57.9	59.7	58.8	61.5	59.2
<b>Male</b>	56.0	56.8	58.8	58.1	59.2	56.5

New Jersey Biology Competency Test  
Proficient and Above by Ethnicity (2010-2015)

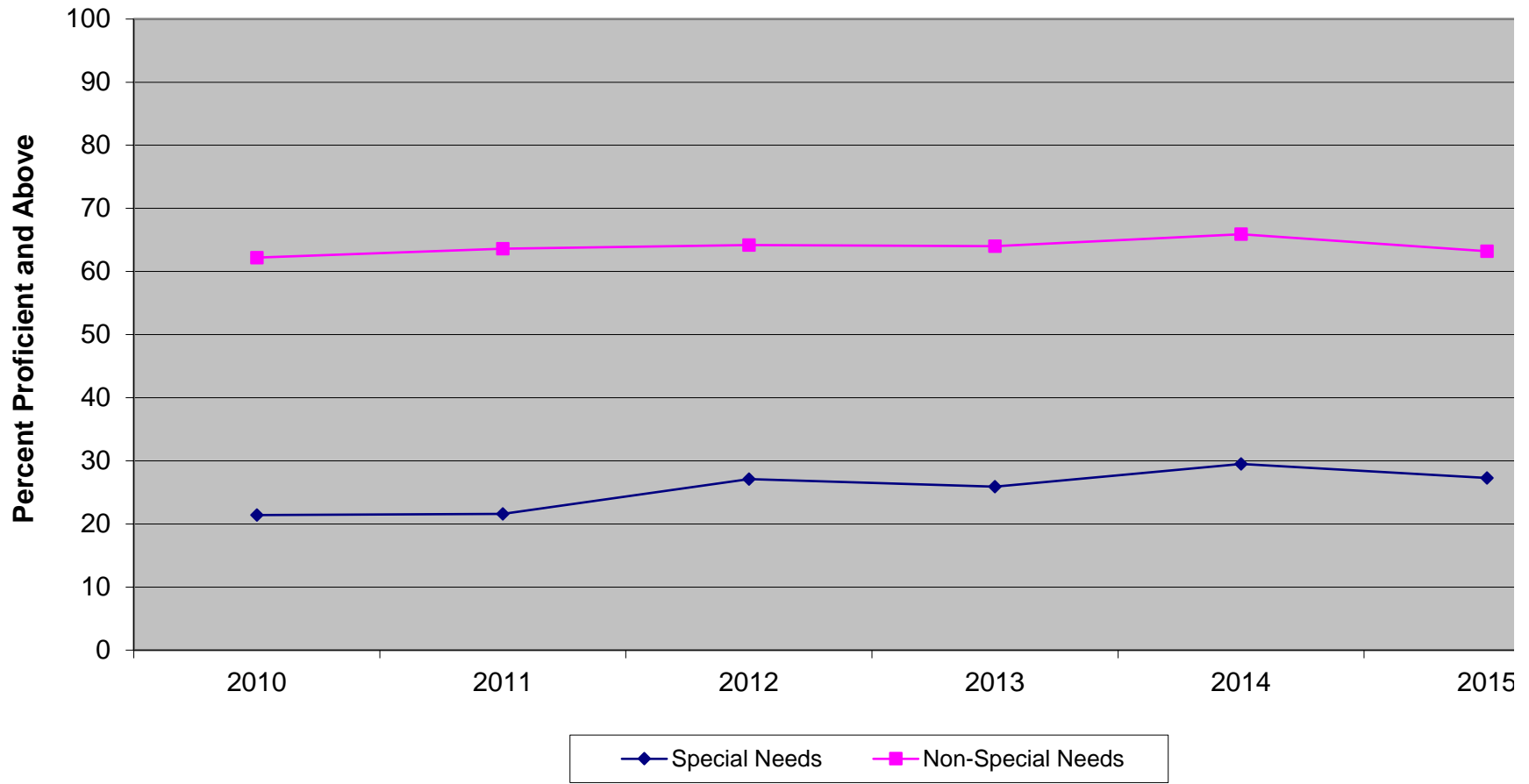


Ethnic codes Pacific Islander, American Indian/Alaskan Native and Other are not shown due to the small number of students in these categories.

**New Jersey Biology Competency Test  
Proficient and Above by Ethnicity (2010-2015)**

	<b>2010</b>	<b>2011</b>	<b>2012</b>	<b>2013</b>	<b>2014</b>	<b>2015</b>
<b>White</b>	68.3	69.6	70.0	70.5	72.2	69.0
<b>Black</b>	27.0	28.1	32.7	30.3	34.1	33.2
<b>Asian</b>	78.4	80.8	81.3	81.9	83.1	81.7
<b>Hispanic</b>	33.3	35.7	39.0	39.0	41.1	38.8

New Jersey Biology Competency Test  
Special Needs vs Non-Special Needs (2010-2015)

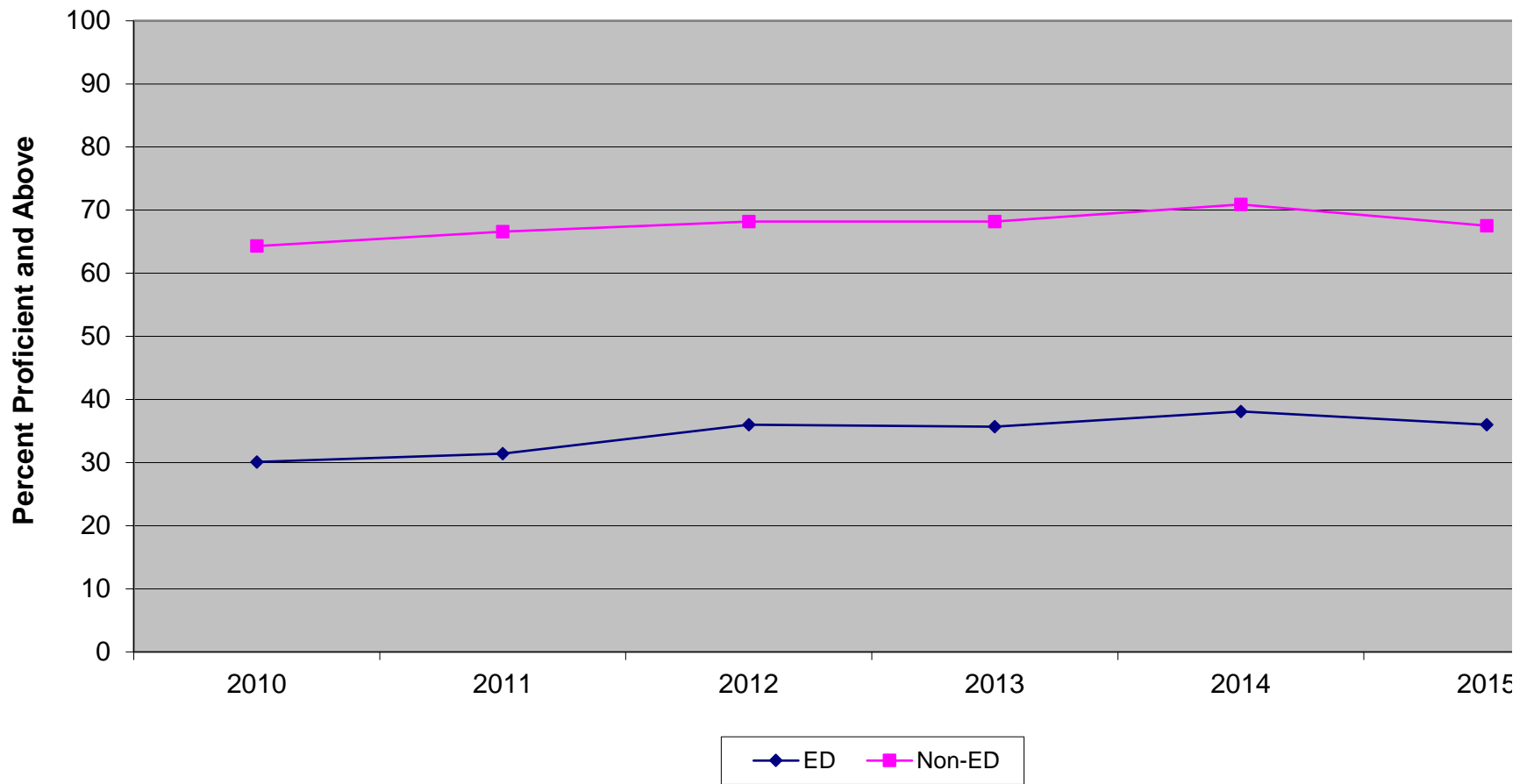


**New Jersey Biology Competency Test  
Special Needs vs Non-Special Needs (2010-2015)**

	<b>2010</b>	<b>2011</b>	<b>2012</b>	<b>2013</b>	<b>2014</b>	<b>2015</b>
<b>Special Needs</b>	21.4	21.6	27.1	25.9	29.5	27.3
<b>Non-Special Needs</b>	62.2	63.6	64.2	64.0	65.9	63.2



**New Jersey Biology Competency Test  
Economically Disadvantaged vs Non-Economically Disadvantaged (2010-2015)**



**New Jersey Biology Competency Test  
Economically Disadvantaged vs Non-Economically Disadvantaged (2010-2015)**

	<b>2010</b>	<b>2011</b>	<b>2012</b>	<b>2013</b>	<b>2014</b>	<b>2015</b>
<b>ED</b>	30.1	31.4	36.0	35.7	38.1	36.0
<b>Non-ED</b>	64.3	66.6	68.2	68.2	70.9	67.5