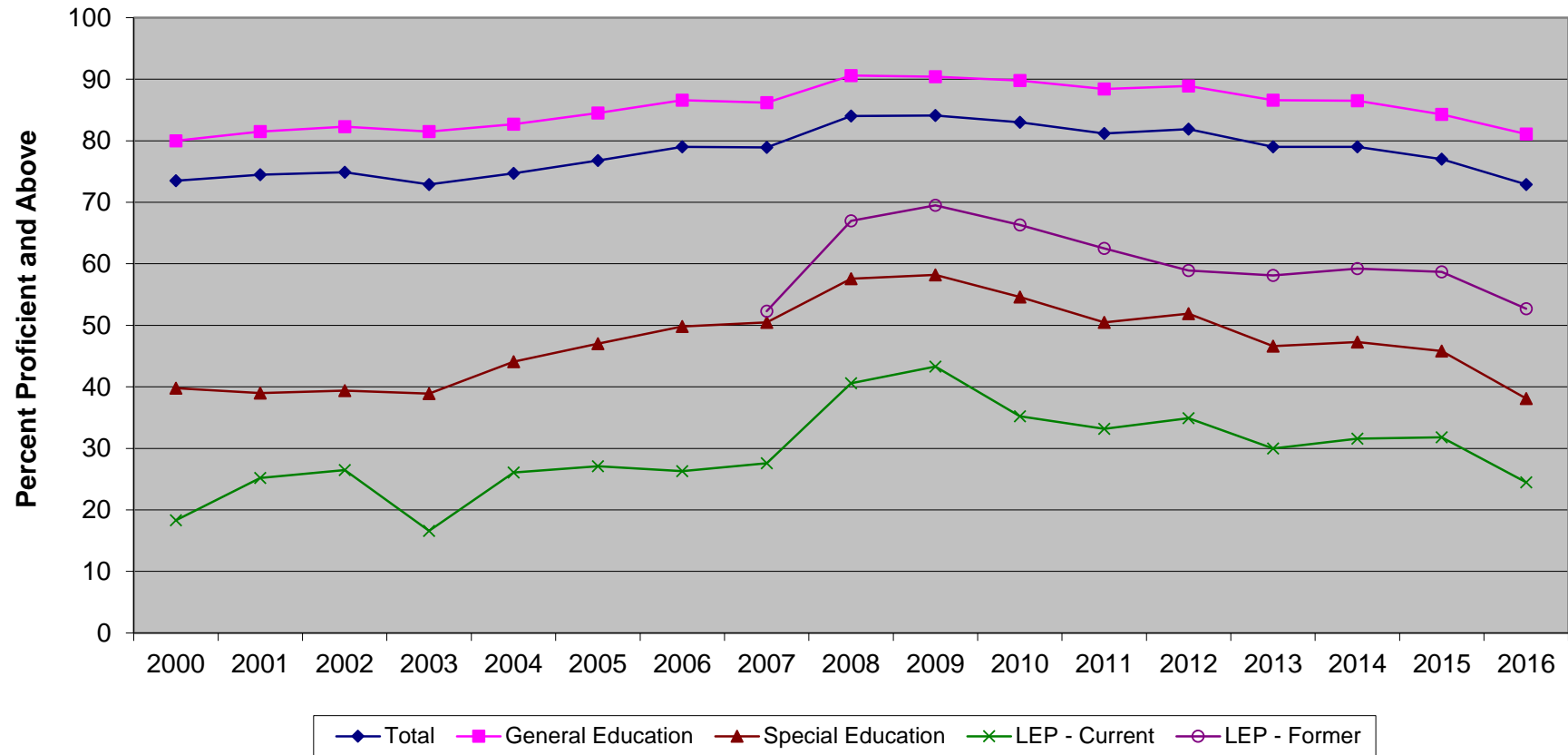


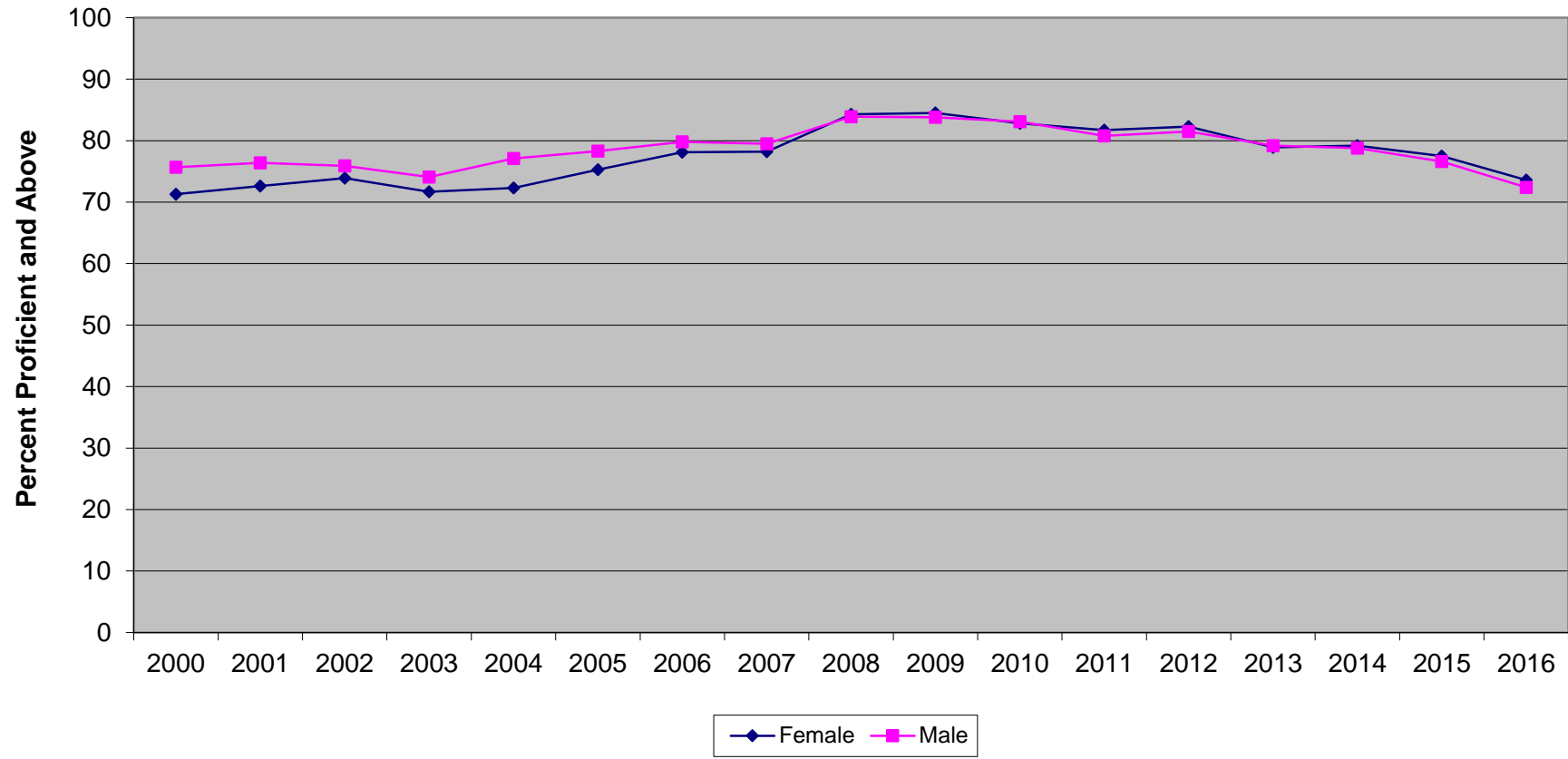
New Jersey Assessment of Skills and Knowledge
Grade 8 Science Proficient and Above
by Instructional Groups (2000-2016)



**New Jersey Assessment of Skills and Knowledge
Grade 8 Science Proficient and Above
by Instructional Groups (2000-2016)**

| | 2000 | 2001 | 2002 | 2003 | 2004 | 2005 | 2006 | 2007 | 2008 | 2009 | 2010 | 2011 | 2012 | 2013 | 2014 | 2015 | 2016 |
|-------------------|------|------|------|------|------|------|------|------|------|------|------|------|------|------|------|------|------|
| Total | 73.5 | 74.5 | 74.9 | 72.9 | 74.7 | 76.8 | 79.0 | 78.9 | 84.0 | 84.1 | 83.0 | 81.2 | 81.9 | 79.0 | 79.0 | 77.0 | 72.9 |
| General Education | 80.0 | 81.5 | 82.3 | 81.5 | 82.7 | 84.5 | 86.6 | 86.2 | 90.6 | 90.4 | 89.8 | 88.4 | 88.9 | 86.6 | 86.5 | 84.3 | 81.1 |
| Special Education | 39.8 | 39.0 | 39.4 | 38.9 | 44.1 | 47.0 | 49.8 | 50.5 | 57.6 | 58.2 | 54.6 | 50.5 | 51.9 | 46.6 | 47.3 | 45.8 | 38.1 |
| LEP - Current | 18.3 | 25.2 | 26.5 | 16.6 | 26.1 | 27.1 | 26.3 | 27.6 | 40.6 | 43.3 | 35.2 | 33.2 | 34.9 | 30.0 | 31.6 | 31.8 | 24.5 |
| LEP - Former | | | | | | | | 52.3 | 67.0 | 69.5 | 66.3 | 62.5 | 58.9 | 58.1 | 59.2 | 58.7 | 52.7 |

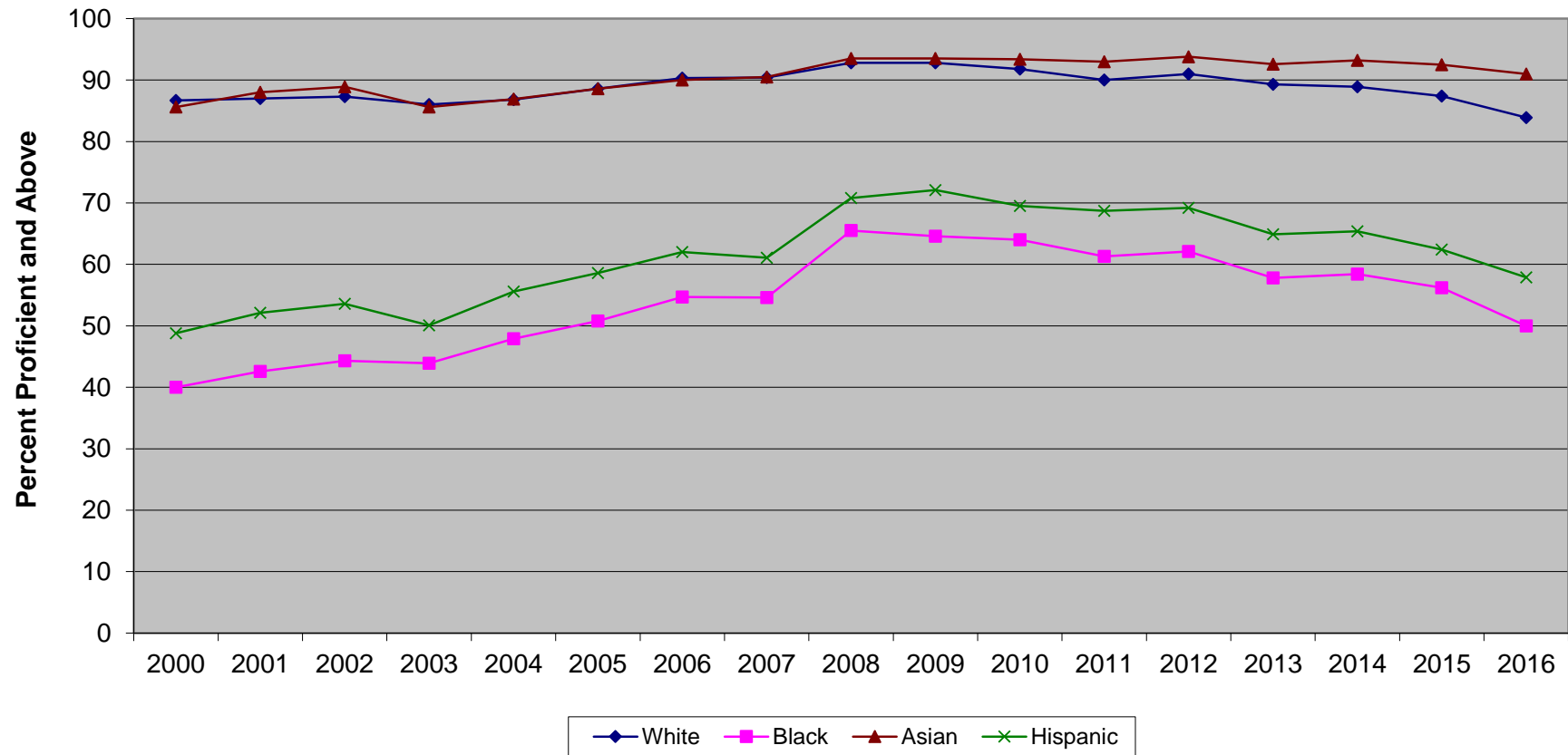
New Jersey Assessment of Skills and Knowledge
Grade 8 Science Proficient and Above
by Gender (2000-2016)



**New Jersey Assessment of Skills and Knowledge
Grade 8 Science Proficient and Above
by Gender (2000-2016)**

| | 2000 | 2001 | 2002 | 2003 | 2004 | 2005 | 2006 | 2007 | 2008 | 2009 | 2010 | 2011 | 2012 | 2013 | 2014 | 2015 | 2016 |
|--------|------|------|------|------|------|------|------|------|------|------|------|------|------|------|------|------|------|
| Female | 71.3 | 72.6 | 73.9 | 71.7 | 72.3 | 75.3 | 78.1 | 78.2 | 84.3 | 84.5 | 82.8 | 81.7 | 82.3 | 78.9 | 79.2 | 77.5 | 73.6 |
| Male | 75.7 | 76.4 | 75.9 | 74.1 | 77.1 | 78.3 | 79.8 | 79.5 | 83.9 | 83.8 | 83.1 | 80.8 | 81.5 | 79.2 | 78.8 | 76.6 | 72.4 |

New Jersey Assessment of Skills and Knowledge
Grade 8 Science Proficient and Above by Ethnicity (2000-2016)

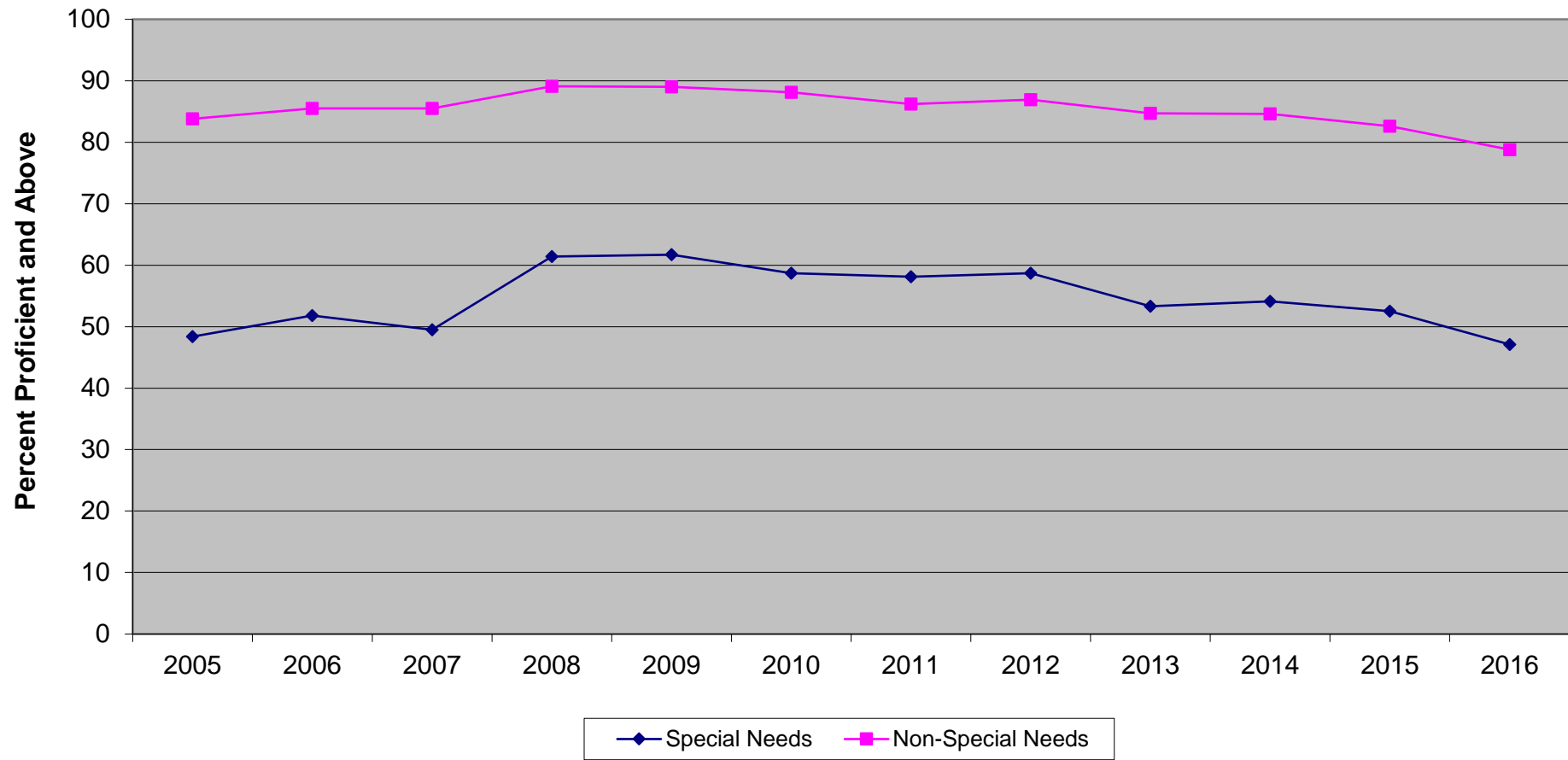


Ethnic codes Pacific Islander, American Indian/Alaskan Native and Other are not shown due to the small number of students in these categories.

**New Jersey Assessment of Skills and Knowledge
Grade 8 Science Proficient and Above
by Ethnicity (2000-2016)**

| | 2000 | 2001 | 2002 | 2003 | 2004 | 2005 | 2006 | 2007 | 2008 | 2009 | 2010 | 2011 | 2012 | 2013 | 2014 | 2015 | 2016 |
|----------|------|------|------|------|------|------|------|------|------|------|------|------|------|------|------|------|------|
| White | 86.7 | 87.0 | 87.3 | 86.0 | 86.8 | 88.6 | 90.3 | 90.4 | 92.8 | 92.8 | 91.8 | 90.0 | 91.0 | 89.3 | 88.9 | 87.4 | 83.9 |
| Black | 40.0 | 42.6 | 44.3 | 43.9 | 47.9 | 50.8 | 54.7 | 54.6 | 65.5 | 64.6 | 64.0 | 61.3 | 62.1 | 57.8 | 58.4 | 56.2 | 50.0 |
| Asian | 85.6 | 88.0 | 88.9 | 85.6 | 86.9 | 88.6 | 90.0 | 90.5 | 93.5 | 93.5 | 93.4 | 93.0 | 93.8 | 92.6 | 93.2 | 92.5 | 91.0 |
| Hispanic | 48.8 | 52.1 | 53.6 | 50.1 | 55.6 | 58.6 | 62.0 | 61.1 | 70.8 | 72.1 | 69.5 | 68.7 | 69.2 | 64.9 | 65.4 | 62.4 | 57.9 |

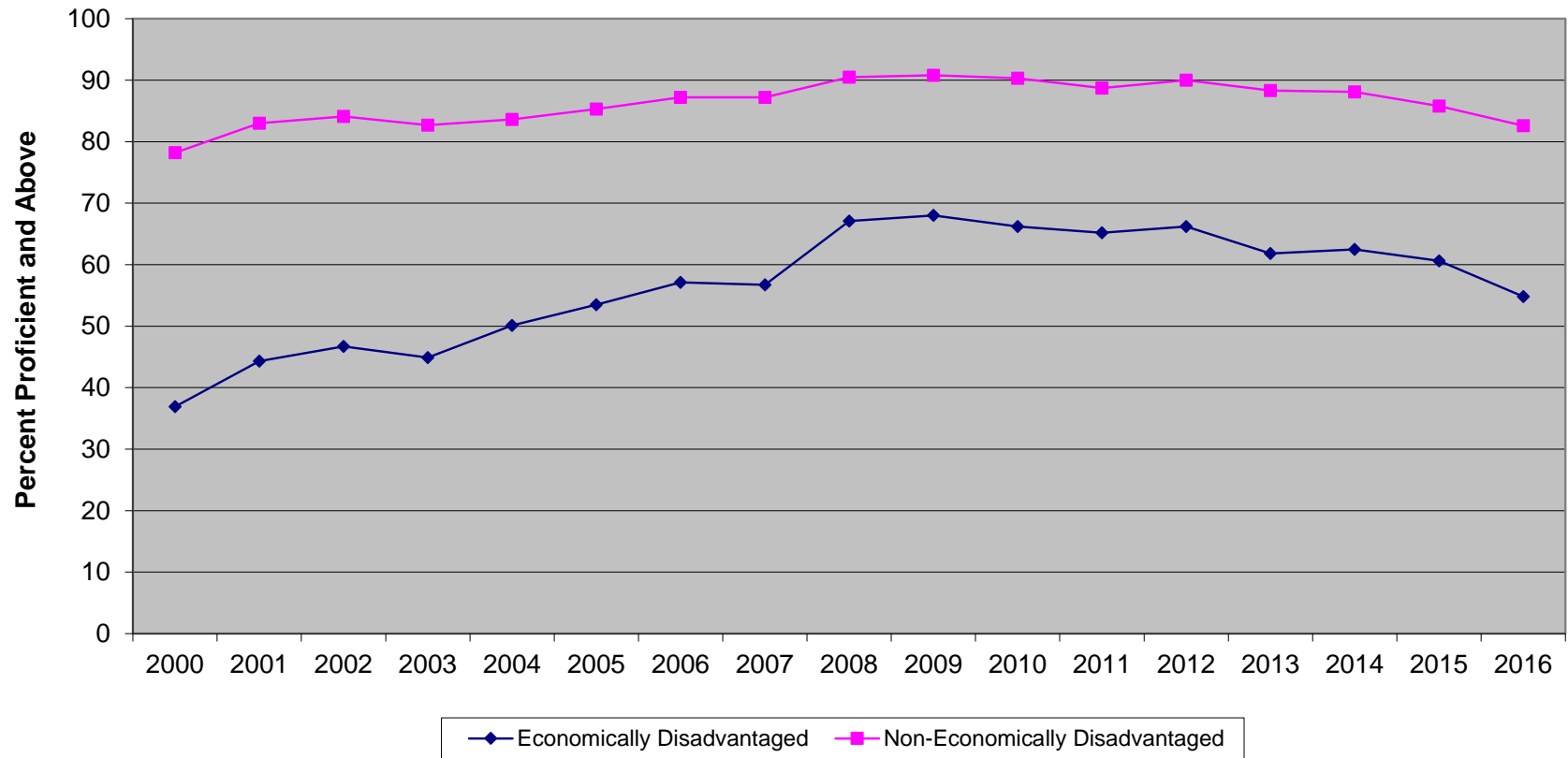
New Jersey Assessment of Skills and Knowledge
Grade 8 Science Proficient and Above
Special Needs vs Non-Special Needs (2005-2016)



**New Jersey Assessment of Skills and Knowledge
Grade 8 Science Proficient and Above
Special Needs vs Non-Special Needs (2005-2016)**

| | 2005 | 2006 | 2007 | 2008 | 2009 | 2010 | 2011 | 2012 | 2013 | 2014 | 2015 | 2016 |
|-------------------|-------------|-------------|-------------|-------------|-------------|-------------|-------------|-------------|-------------|-------------|-------------|-------------|
| Special Needs | 48.4 | 51.8 | 49.5 | 61.4 | 61.7 | 58.7 | 58.1 | 58.7 | 53.3 | 54.1 | 52.5 | 47.1 |
| Non-Special Needs | 83.8 | 85.5 | 85.5 | 89.1 | 89.0 | 88.1 | 86.2 | 86.9 | 84.7 | 84.6 | 82.6 | 78.8 |

New Jersey Assessment of Skills and Knowledge
Grade 8 Science Proficient and Above
Economically Disadvantaged vs Non-Economically Disadvantaged (2000-2016)



**New Jersey Assessment of Skills and Knowledge
Grade 8 Science Proficient and Above
Economically Disadvantaged vs Non-Economically Disadvantaged (2000-2016)**

| | 2000 | 2001 | 2002 | 2003 | 2004 | 2005 | 2006 | 2007 | 2008 | 2009 | 2010 | 2011 | 2012 | 2013 | 2014 | 2015 | 2016 |
|--------------------------------|------|------|------|------|------|------|------|------|------|------|------|------|------|------|------|------|------|
| Economically Disadvantaged | 36.9 | 44.3 | 46.7 | 44.9 | 50.1 | 53.5 | 57.1 | 56.7 | 67.1 | 68.0 | 66.2 | 65.2 | 66.2 | 61.8 | 62.5 | 60.6 | 54.8 |
| Non-Economically Disadvantaged | 78.2 | 83.0 | 84.1 | 82.7 | 83.6 | 85.3 | 87.2 | 87.2 | 90.5 | 90.8 | 90.3 | 88.7 | 90.0 | 88.3 | 88.1 | 85.8 | 82.6 |