

# New Jersey ACCESS for ELLs Percentile Growth Chart

## ELP Domain – WRITING



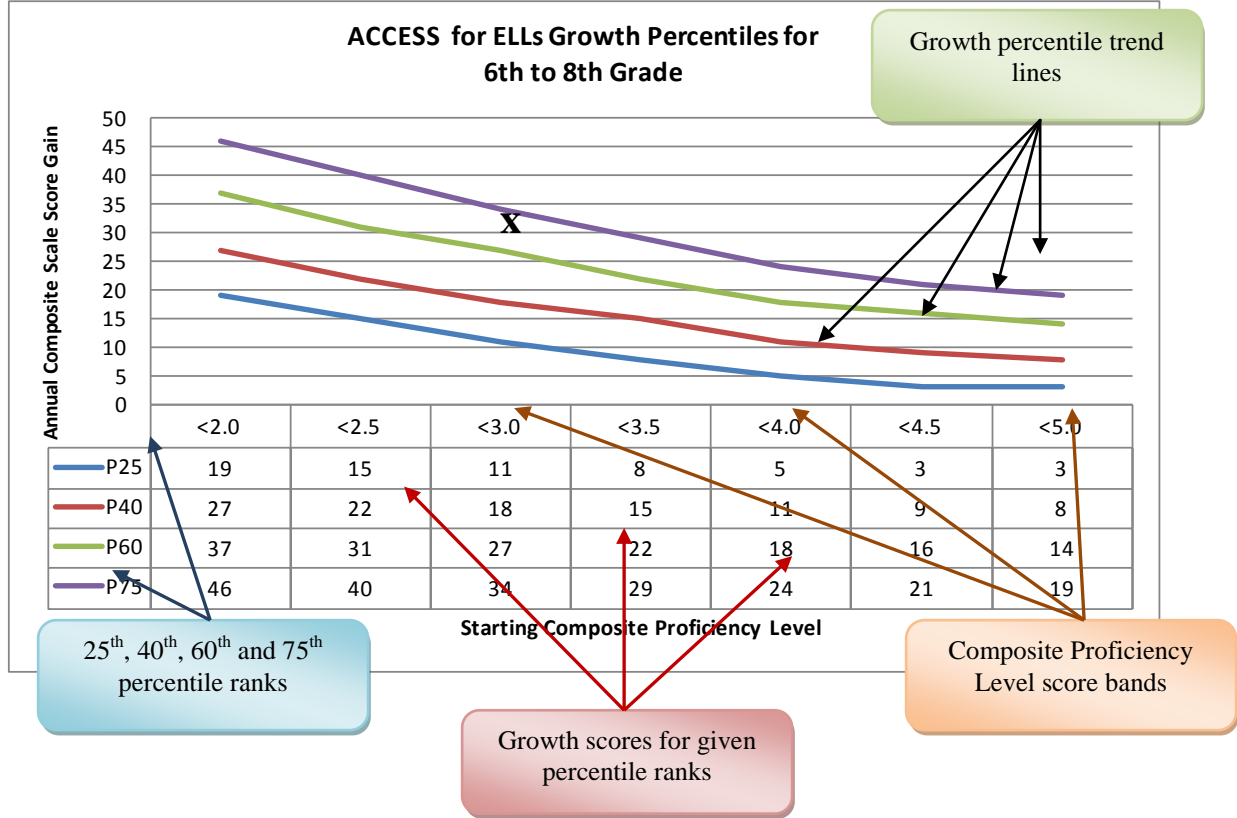
### Description:

This document shows the writing domain growth on the ACCESS for ELLs for students at various grade and English language proficiency levels. Growth is based on the performance of New Jersey students who took the spring 2012 and spring 2013 administration of the WIDA ACCESS for ELLs.

### WIDA Growth Percentile Chart Example

The example chart below is a WIDA Growth Percentile chart for ACCESS for ELLs® Overall Composite Scores for the 6<sup>th</sup> through 8<sup>th</sup> grade cluster. It represents the growth rates of all matched student records in WIDA consortium states between the 2007-08 and 2008-09 school years.

**Example chart – for demonstration purposes only**



To determine how a student’s ACCESS for ELLs score is improving relative to all WIDA students, calculate their growth score. This is done by taking the current year’s Overall Composite Scale Score on ACCESS and subtracting it from the previous year’s score. Next, plot the growth score based on the student’s previous year’s Overall Composite proficiency level to see how they are doing.

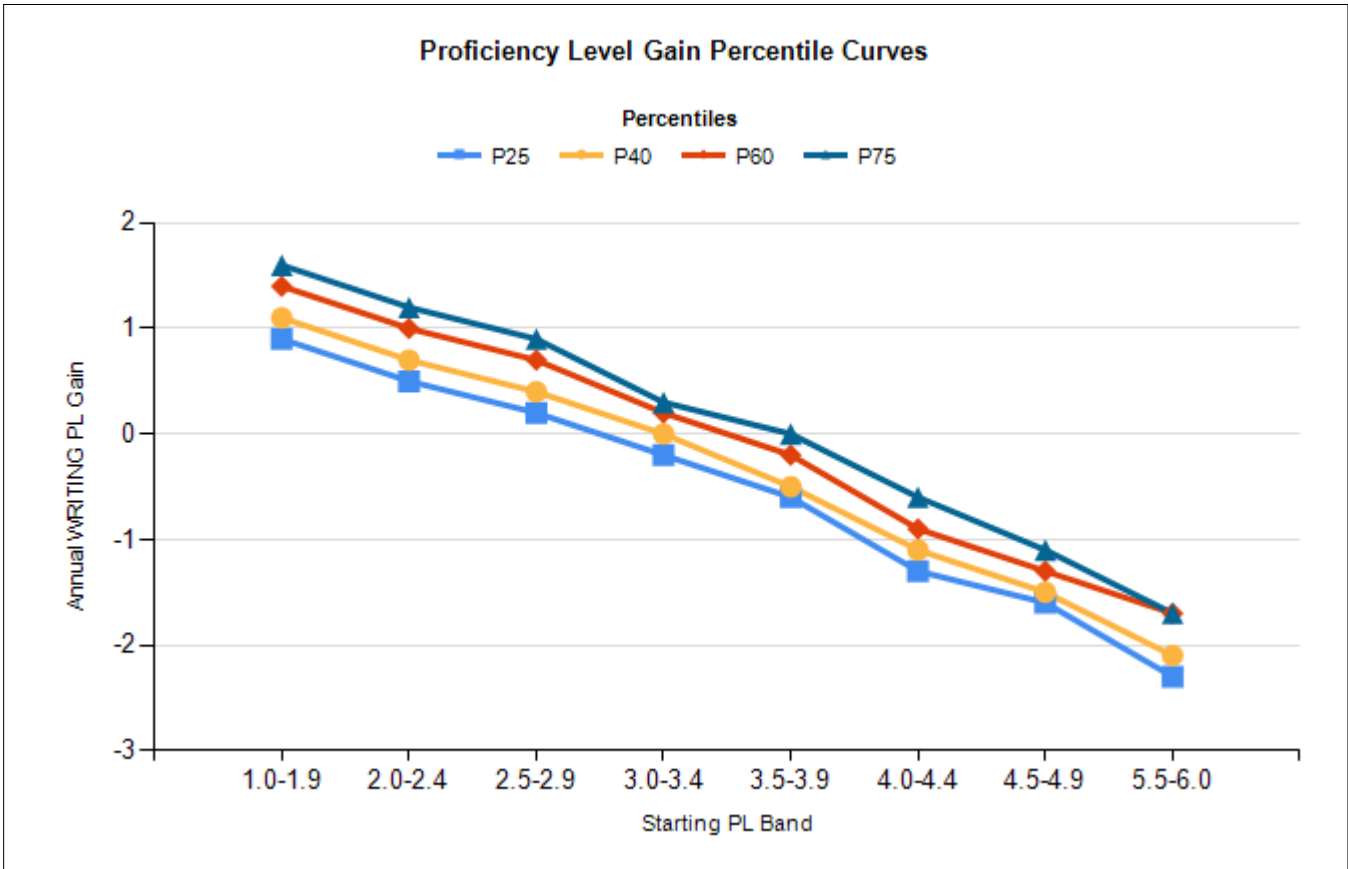
In the chart above there is an “x.” Let us say that this is Minh’s score. Minh was a 6<sup>th</sup> grader last year and received a Composite Proficiency Level score of 3.2 last year. When you subtract this year’s scale score\* from last year’s score, you see that she improved by 27 scale score\* points. This places Minh right at the 60<sup>th</sup> percentile. That means that she improved at a rate equal to or better than 60% of the students taking ACCESS for the past two years. Below is a quick rule of thumb on how to interpret growth percentile scores:

- At or above the 60<sup>th</sup> percentile (P60 and above) – More than average growth
- Between the 40<sup>th</sup> and 60<sup>th</sup> percentiles (P40 to P60) – Average growth
- At or below the 40<sup>th</sup> percentile (P40 and below) – Less than average growth

**\* Note that this example chart shows scale score growth, however, the use of proficiency level gain (below) can also acknowledge how growth should be interpreted for New Jersey students.**

New Jersey ACCESS Cluster - K (2011-2012 School Year)  
 Testing Cycles - 2011-2012 to 2012-2013

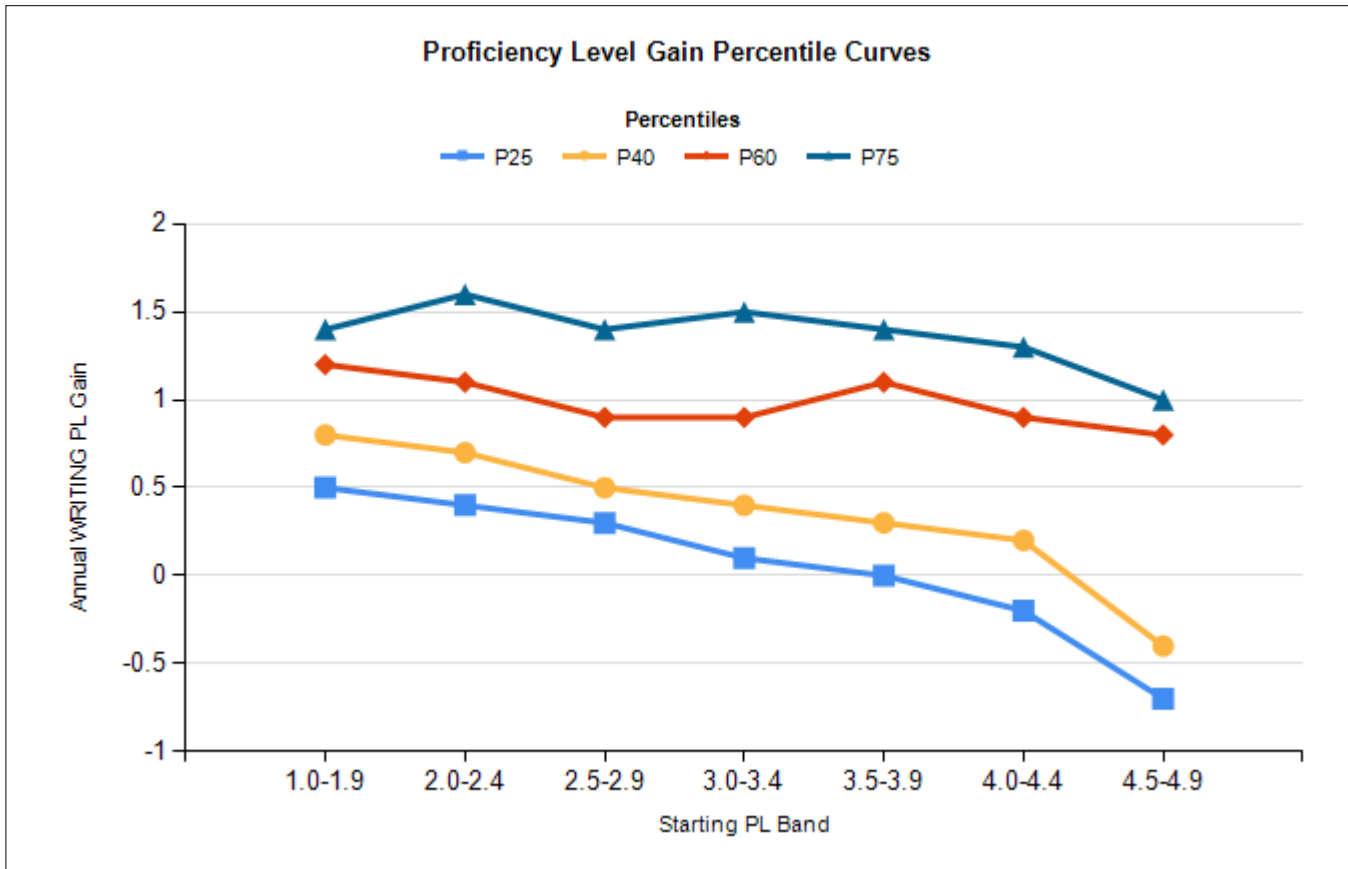
**ACCESS Percentile Growth Chart**  
**ELP Domain - WRITING**



|            | 1.0-1.9 | 2.0-2.4 | 2.5-2.9 | 3.0-3.4 | 3.5-3.9 | 4.0-4.4 | 4.5-4.9 | 5.5-6.0 |
|------------|---------|---------|---------|---------|---------|---------|---------|---------|
| <b>P75</b> | 1.6     | 1.2     | 0.9     | 0.3     | 0.0     | -0.6    | -1.1    | -1.7    |
| <b>P60</b> | 1.4     | 1.0     | 0.7     | 0.2     | -0.2    | -0.9    | -1.3    | -1.7    |
| <b>P40</b> | 1.1     | 0.7     | 0.4     | 0.0     | -0.5    | -1.1    | -1.5    | -2.1    |
| <b>P25</b> | 0.9     | 0.5     | 0.2     | -0.2    | -0.6    | -1.3    | -1.6    | -2.3    |

New Jersey ACCESS Cluster - 1-2 (2011-2012 School Year)  
 Testing Cycles - 2011-2012 to 2012-2013

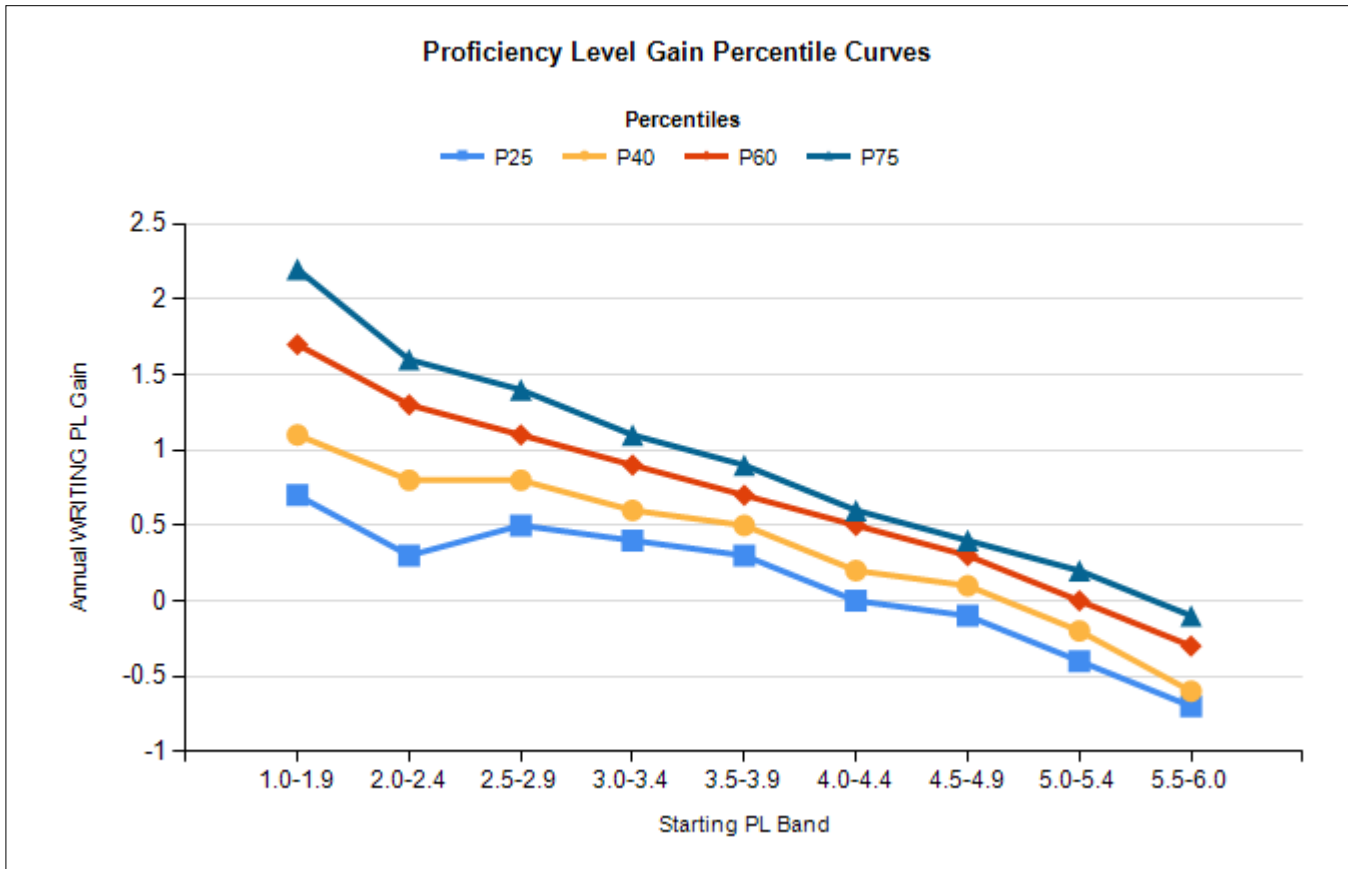
**ACCESS Percentile Growth Chart**  
**ELP Domain - WRITING**



|            | 1.0-1.9 | 2.0-2.4 | 2.5-2.9 | 3.0-3.4 | 3.5-3.9 | 4.0-4.4 | 4.5-4.9 |
|------------|---------|---------|---------|---------|---------|---------|---------|
| <b>P75</b> | 1.4     | 1.6     | 1.4     | 1.5     | 1.4     | 1.3     | 1.0     |
| <b>P60</b> | 1.2     | 1.1     | 0.9     | 0.9     | 1.1     | 0.9     | 0.8     |
| <b>P40</b> | 0.8     | 0.7     | 0.5     | 0.4     | 0.3     | 0.2     | -0.4    |
| <b>P25</b> | 0.5     | 0.4     | 0.3     | 0.1     | 0.0     | -0.2    | -0.7    |

New Jersey ACCESS Cluster - 3-5 (2011-2012 School Year)  
 Testing Cycles - 2011-2012 to 2012-2013

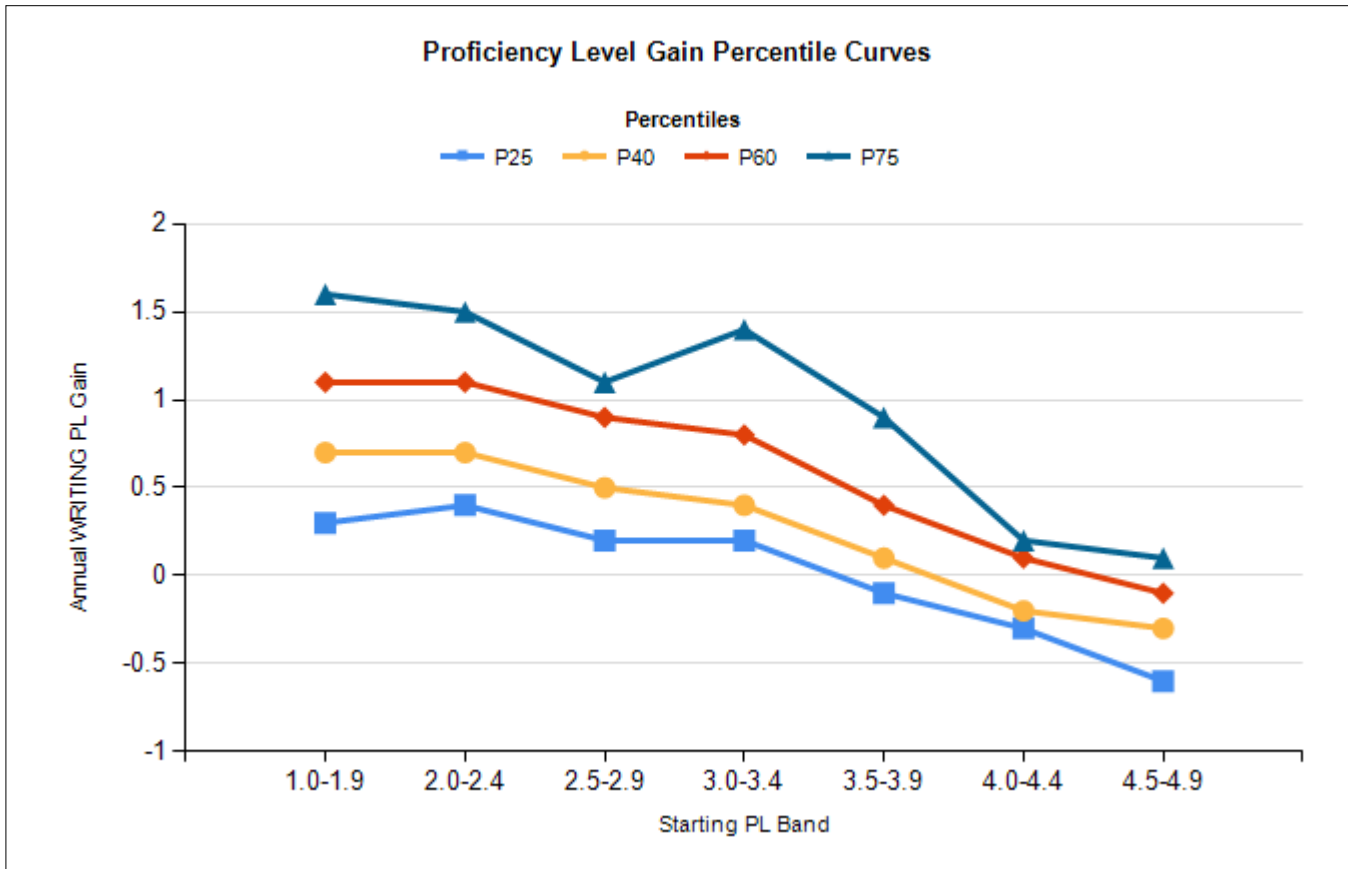
**ACCESS Percentile Growth Chart**  
**ELP Domain - WRITING**



|            | 1.0-1.9 | 2.0-2.4 | 2.5-2.9 | 3.0-3.4 | 3.5-3.9 | 4.0-4.4 | 4.5-4.9 | 5.0-5.4 | 5.5-6.0 |
|------------|---------|---------|---------|---------|---------|---------|---------|---------|---------|
| <b>P75</b> | 2.2     | 1.6     | 1.4     | 1.1     | 0.9     | 0.6     | 0.4     | 0.2     | -0.1    |
| <b>P60</b> | 1.7     | 1.3     | 1.1     | 0.9     | 0.7     | 0.5     | 0.3     | 0.0     | -0.3    |
| <b>P40</b> | 1.1     | 0.8     | 0.8     | 0.6     | 0.5     | 0.2     | 0.1     | -0.2    | -0.6    |
| <b>P25</b> | 0.7     | 0.3     | 0.5     | 0.4     | 0.3     | 0.0     | -0.1    | -0.4    | -0.7    |

New Jersey ACCESS Cluster - 6-8 (2011-2012 School Year)  
 Testing Cycles - 2011-2012 to 2012-2013

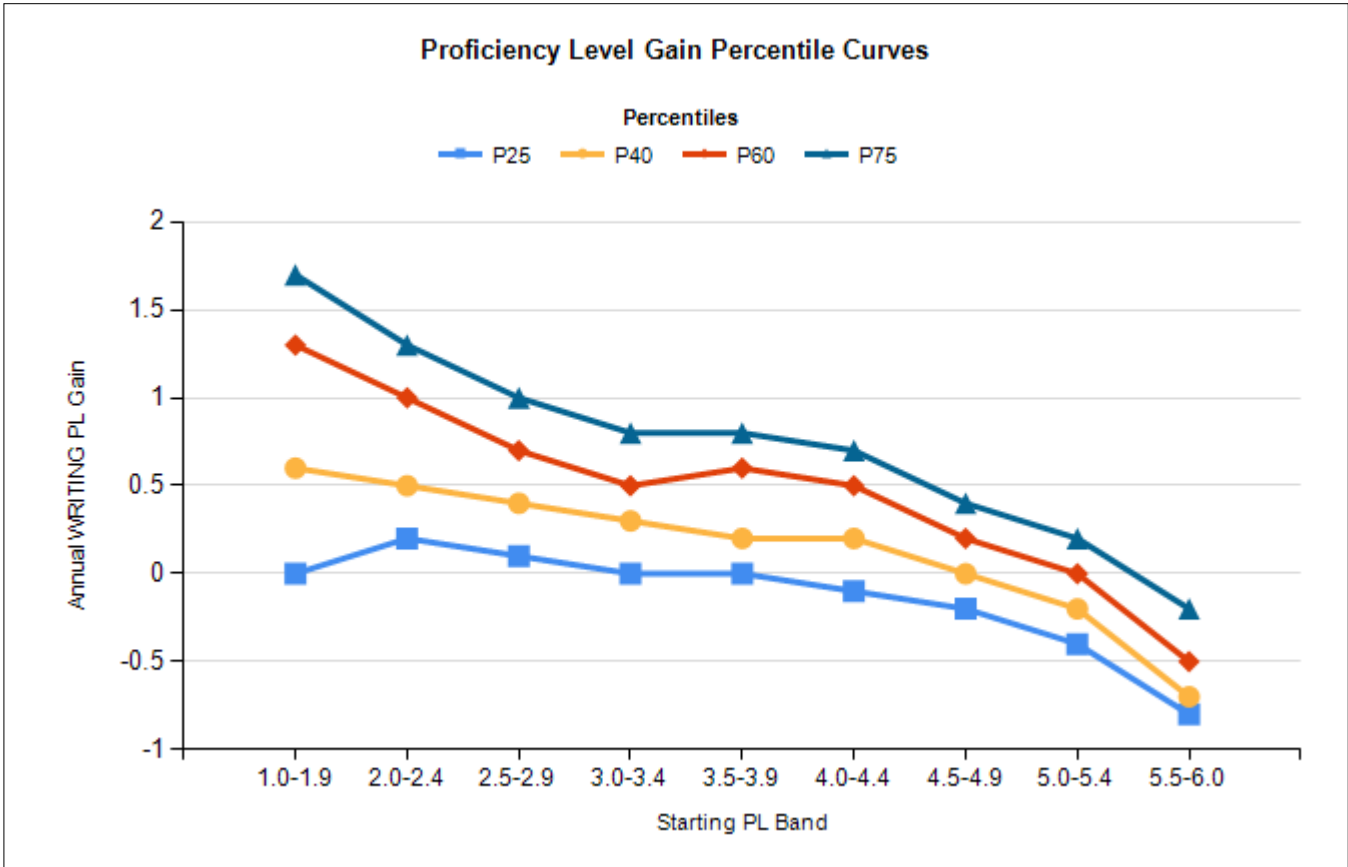
**ACCESS Percentile Growth Chart**  
**ELP Domain - WRITING**



|            | 1.0-1.9 | 2.0-2.4 | 2.5-2.9 | 3.0-3.4 | 3.5-3.9 | 4.0-4.4 | 4.5-4.9 |
|------------|---------|---------|---------|---------|---------|---------|---------|
| <b>P75</b> | 1.6     | 1.5     | 1.1     | 1.4     | 0.9     | 0.2     | 0.1     |
| <b>P60</b> | 1.1     | 1.1     | 0.9     | 0.8     | 0.4     | 0.1     | -0.1    |
| <b>P40</b> | 0.7     | 0.7     | 0.5     | 0.4     | 0.1     | -0.2    | -0.3    |
| <b>P25</b> | 0.3     | 0.4     | 0.2     | 0.2     | -0.1    | -0.3    | -0.6    |

New Jersey ACCESS Cluster - 9-12 (2011-2012 School Year)  
 Testing Cycles - 2011-2012 to 2012-2013

**ACCESS Percentile Growth Chart**  
**ELP Domain - WRITING**



|            | 1.0-1.9 | 2.0-2.4 | 2.5-2.9 | 3.0-3.4 | 3.5-3.9 | 4.0-4.4 | 4.5-4.9 | 5.0-5.4 | 5.5-6.0 |
|------------|---------|---------|---------|---------|---------|---------|---------|---------|---------|
| <b>P75</b> | 1.7     | 1.3     | 1.0     | 0.8     | 0.8     | 0.7     | 0.4     | 0.2     | -0.2    |
| <b>P60</b> | 1.3     | 1.0     | 0.7     | 0.5     | 0.6     | 0.5     | 0.2     | 0.0     | -0.5    |
| <b>P40</b> | 0.6     | 0.5     | 0.4     | 0.3     | 0.2     | 0.2     | 0.0     | -0.2    | -0.7    |
| <b>P25</b> | 0.0     | 0.2     | 0.1     | 0.0     | 0.0     | -0.1    | -0.2    | -0.4    | -0.8    |