

**OVERVIEW**

MORRIS  
MADISON BORO

GRADE SPAN 09-12

This school's academic performance is **very high when compared** to schools across the state. Additionally, its academic performance is **high when compared** to its peers. This school's college and career readiness is **very high when compared** to schools across the state. Additionally, its college and career readiness is **high when compared** to its peers. This school's graduation and post-secondary performance is **about average when compared** to schools across the state. Additionally, its graduation and post-secondary readiness **lags in comparison** to its peers.

Performance Areas	Peer Percentile	Statewide Percentile	Percent of Targets Met
Academic Achievement	79	84	100%
College & Career Readiness	77	80	100%
Graduation and Post-Secondary	33	59	100%

**Improvement Status**

N/A

**Rationale**

N/A

- Very High Performance** is defined as being equal to or above the 80th percentile.
- High Performance** is defined as being between the 60th and 79.9th percentiles.
- Average Performance** is defined as being between the 40th and 59.9th percentiles.
- Lagging Performance** is defined as being between the 20th and 39.9th percentiles.
- Significantly Lagging Performance** is defined as being equal to or below the 19.9th percentile.

**Peer Schools** are schools that have similar grade levels and students with similar demographic characteristics, such as the percentage of students qualifying for Free/Reduced Lunch, Limited English Proficiency programs or Special Education programs.

**Academic Achievement**

This school outperforms **84%** of schools statewide as noted by its statewide percentile and **79%** of schools educating students with similar demographic characteristics as noted in its peer school percentile in the performance area of Academic Achievement. Additionally, this school is meeting **100%** of its performance targets in the area of Academic Achievement.



Academic Achievement measures the content knowledge students have in language arts literacy and math. For high schools, this includes measures of the school's proficiency rate on both the Language Arts Literacy and Math sections of the New Jersey High School Proficiency Assessment (HSPA). A proficiency rate is calculated by summing the count of students who scored either proficient or advanced proficient on the assessment and dividing by the count of valid test scores.

**College and Career Readiness**

This school outperforms **80%** of schools statewide as noted by its statewide percentile and **77%** of schools educating students with similar demographic characteristics as noted in its peer school percentile in the performance area of College and Career Readiness. Additionally, this school is meeting **100%** of its performance targets in the area of College and Career Readiness.



College and Career Readiness measures the degree to which students are demonstrating behaviors that are indicative of future attendance and/or success in college and careers. For high schools, this includes measures of participation in college readiness tests such as the SAT, ACT or PSAT and in rigorous coursework as defined by participation in AP or IB courses in English, math, social studies and science.

**Graduation and Post-Secondary**

This school outperforms **59%** of schools statewide as noted by its statewide percentile and **33%** of schools educating students with similar demographic characteristics as noted in its peer school percentile in the performance area of Graduation and Post-Secondary. Additionally, this school is meeting **100%** of its performance targets in the area of Graduation and Post-Secondary.



Graduation and Postsecondary measures the rate at which students who begin high school four years earlier graduate within four years. Also included is a measure of the rate at which students in a particular school drop out of school.

**DEMOGRAPHIC INFORMATION**

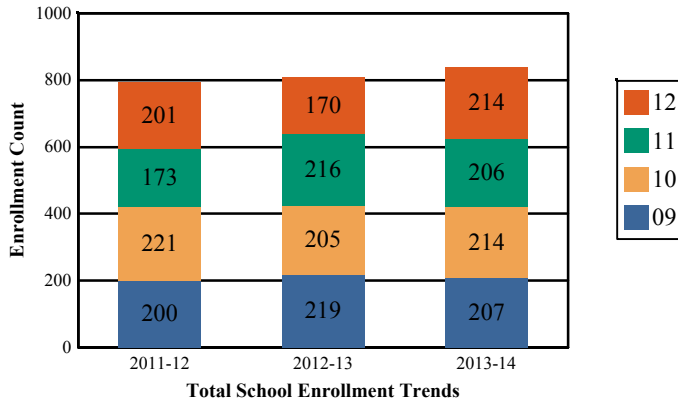
MORRIS  
MADISON BORO

GRADE SPAN 09-12

MADISON HIGH SCHOOL  
170 RIDGEDALE AVENUE  
MADISON, NJ 07940

**Enrollment by Grade**

This graph presents the count of students who were 'on roll' by grade in October of each school year.



**Language Diversity**

This table presents the percentage of students who primarily speak each language in their home.

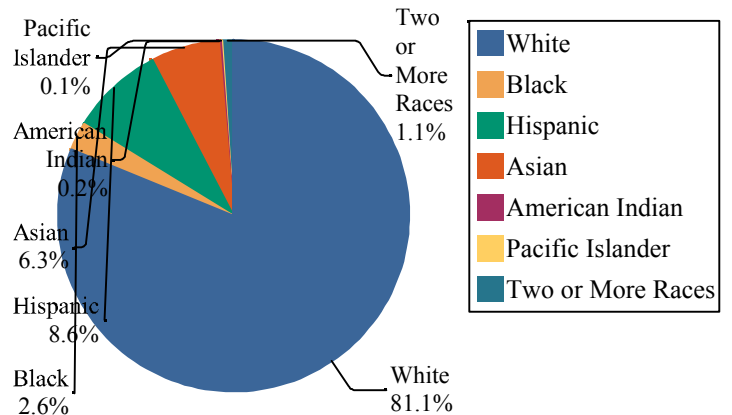
2013-14	Percent
English	92.3%
Spanish	4.0%
Korean	0.6%
German	0.5%
Nepali	0.4%
Mandingo	0.2%
Other	2.1%

Note: "UG" represents the count of students who are 'on roll' in this school but who are educated in ungraded classrooms, meaning that the classrooms may contain students from multiple grade levels.

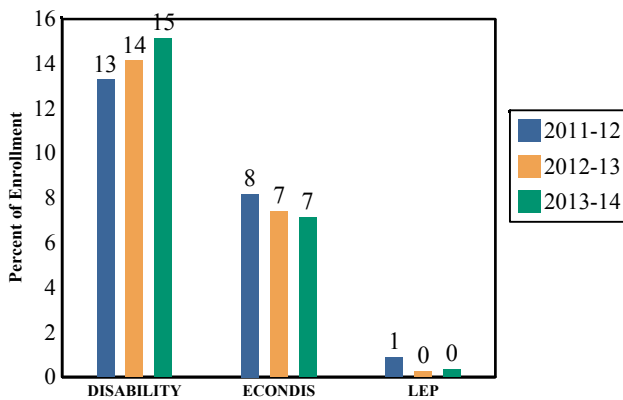
Total School Enrollment	
2011-12	795
2012-13	810
2013-14	840

**Enrollment by Ethnic/Racial Subgroup**

This graph presents the percentages of enrollment for each subgroup defined by the No Child Left Behind Act of 2001

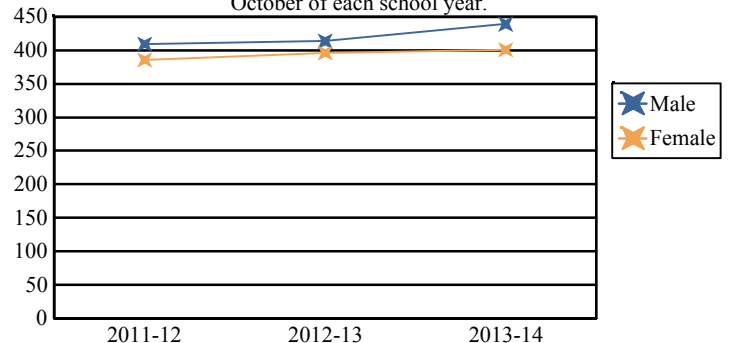


**Enrollment Trends by Program Participation**



**Enrollment by Gender**

This graph presents the count of students by gender who were 'on roll' in October of each school year.



**Current Year Enrollment by Program Participation**

2013-2014	Count of Students	% of Enrollment
Students with Disability	127	15%
Economically Disadvantaged Students	60	7.2%
Limited English Proficient Students	3	0.4%

	Male	Female
2011-12	409	386
2012-13	414	396
2013-14	439	401

### ACADEMIC ACHIEVEMENT

MORRIS

MADISON BORO

GRADE SPAN 09-12

Academic Achievement measures the content knowledge students have in Language Arts Literacy and Math. In high schools, this includes the outcomes of the New Jersey High School Proficiency Assessment (HSPA). The first column - Schoolwide Performance - in the table below includes measures of the total schoolwide proficiency rate in both Language Arts Literacy and Math across multiple administrations of the assessment. The second column - Peer School Percentile - indicates where the school's proficiency rate compares to its group of peer schools. For example, a school that has a peer school percentile of 65 has a proficiency rate that is higher than 65% of its peer schools. The third column - Statewide Percentile - indicates where the school's proficiency rate compares to schools across the state. For example, a school that has a statewide percentile of 30 has a proficiency rate that is higher than 30% of all schools with HSPA scores statewide. The last column - Percent of Targets Met - presents the percentage of progress targets met as defined by the NJDOE's NCLB waiver.

The Summary row presents the averages of the peer school percentiles, the average of statewide percentiles and the percentage of statewide targets met.

Academic Achievement Indicators	Schoolwide Performance	Peer Percentile	State Percentile	Percent of Targets Met
HSPA Language Arts Proficiency and above	99%	74	82	100%
HSPA Math Proficiency and above	95%	84	86	100%
<b>SUMMARY - Academic Achievement</b>		79	84	100%

### NCLB Progress Targets - Language Arts Literacy

This table presents the Progress Targets as uniquely calculated for each subgroup in each school under NJDOE's NCLB waiver. The methodology - as defined by the United States Department of Education - is calculated so that each subgroup will halve the gap between their 2011 proficiency rate and 100% proficiency by 2017.

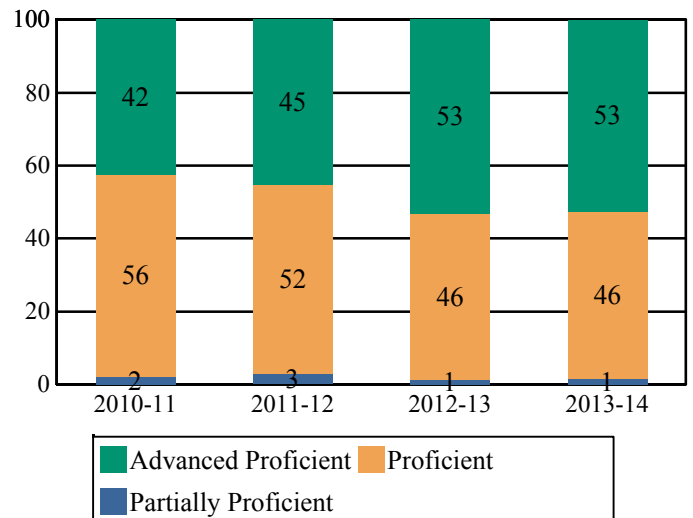
Subgroups	Total Valid Scores	Pass Rate	Target	Met Target?
Schoolwide	215	98.6	90	YES
White	178	98.3	90	YES
Black	-	-		--
Hispanic	-	-		--
American Indian	-	-		--
Asian	-	-		--
Two or More Races	-	-		--
Students with Disability	37	91.9	83.4	YES
Limited English Proficient Students	-	-		--
Economically Disadvantaged Students	-	-		--

**YES\* = Met Progress Target (Confidence Interval Applied)**

Data is presented for subgroups when the count is high enough under NCLB suppression rules.

### Proficiency Trends - Language Arts Literacy

This graph presents the percentage of students who scored in the Advanced Proficient, Proficient and Partially Proficient categories of the statewide Language Arts Literacy assessment over the prior four years.



**ACADEMIC ACHIEVEMENT**

MORRIS  
MADISON BORO

GRADE SPAN 09-12

**NCLB Progress Targets - Math**

This table presents the Progress Targets as uniquely calculated for each subgroup in each school under NJDOE's NCLB waiver. The methodology - as defined by the United States Department of Education - is calculated so that each subgroup will halve the gap between their 2011 proficiency rate and 100% proficiency by 2017.

Subgroups	Total Valid Scores	Pass Rate	Target	Met Target?
Schoolwide	215	95.3	90	YES
White	178	95.5	90	YES
Black	-	-		--
Hispanic	-	-		--
American Indian	-	-		--
Asian	-	-		--
Two or More Races	-	-		--
Students with Disability	37	78.4	54.4	YES
Limited English Proficient Students	-	-		--
Economically Disadvantaged Students	-	-		--

YES\* = Met Progress Target (Confidence Interval Applied)

Data is presented for subgroups when the count is high enough under NCLB suppression rules.

**Proficiency Outcomes - Biology**

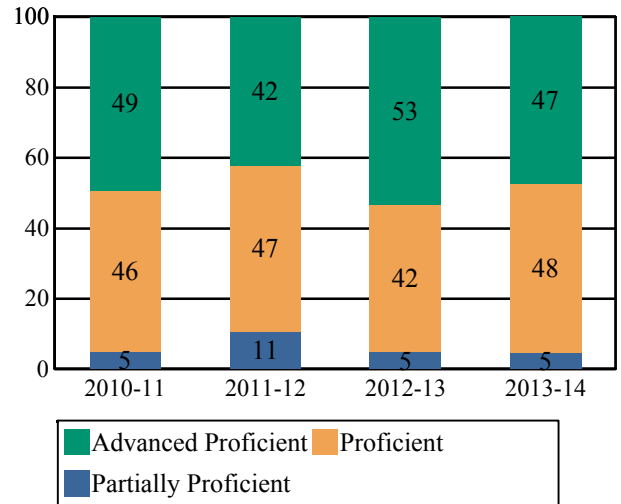
This table presents the percentage of students who scored in the Advanced Proficient, Proficient and Partially Proficient categories of the New Jersey Biology Competency Test (NJBCT) in the latest school year.

Subgroups	Advanced Proficient	Proficient	Partially Proficient
Schoolwide	33%	51%	16%
White	37%	48%	15%
Black	-	-	-
Hispanic	-	-	-
American Indian	-	-	-
Asian	-	-	-
Two or More Races	-	-	-
Students with Disability	-	-	-
Limited English Proficient Students	-	-	-
Economically Disadvantaged Students	-	-	-

Data is presented for subgroups when the count is high enough under NCLB suppression rules.

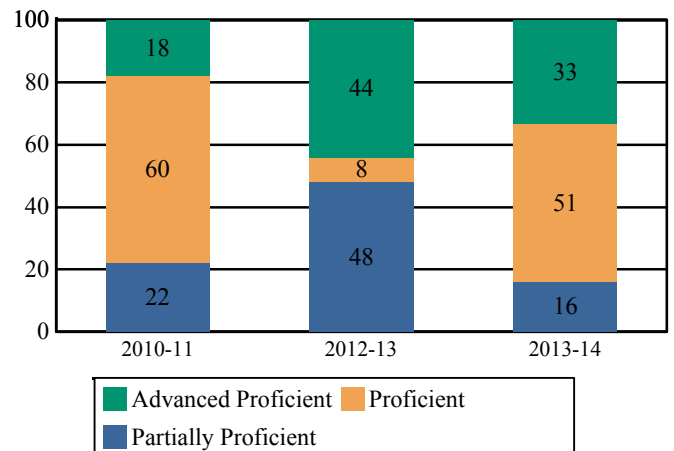
**Proficiency Trends - Math**

This graph presents the percentage of students who scored in the Advanced Proficient, Proficient and Partially Proficient categories of the statewide Math assessment over the prior four years.



**Proficiency Trends - Biology**

This graph presents the percentage of students who scored in the Advanced Proficient, Proficient, and Partially Proficient categories of the Biology Competency Test over the last two years.



**COLLEGE AND CAREER READINESS**

**MADISON HIGH SCHOOL**  
**170 RIDGEDALE AVENUE**  
**MADISON, NJ 07940**

**MORRIS**  
**MADISON BORO**

**GRADE SPAN 09-12**

Students in high schools begin to demonstrate college readiness behaviors long before they actually graduate from high school. Among those behaviors are taking college entrance exams and challenging themselves with rigorous course work. The table below presents five such indicators: the percentage of students enrolled in the 12th grade who took the SAT or ACT, the percentage of 10th and 11th graders who took the PSAT, the percentage of students who scored above the SAT benchmark of 1550, the percentage of 11th and 12th graders who took at least one AP or IB test in English, math, social studies or science, and the percentage of those AP or IB tests that were scored a 3 or higher.

The first column - Schoolwide Performance - represents the outcomes for these particular indicators in the school. The second column - Peer School Percentile - indicates how the school's performance compares to its group of peer schools. For example, a school whose peer school percentile is 65 in SAT participation has a higher SAT Participation than 65% of its peer group. The third column - Statewide Percentile - indicates how the school's performance compares to schools across the state. The fourth column - Statewide Target - provides the statewide targets for each of these indicators. The last column - Met Target? - indicates whether the School Performance met or exceeded the statewide target.

The Summary row presents the averages of the peer school percentiles, the average of statewide percentiles and the percentage of statewide targets met.

College and Career Readiness Indicators	Schoolwide Performance	Peer Percentile	Statewide Percentile	Statewide Target	Met Target?
Percent of Students Participating in SAT or ACT	99%	94	83	80%	YES
Percent of Students Participating in PSAT or PLAN	89%	61	60	60%	YES
Percent of Students Scoring Above 1550 on SAT	65%	74	83	40%	YES
Percent of Students Taking at least one AP Test or IB Test in English, Math, Social Studies or Science	41%	84	88	35%	YES
Percent of AP Tests $\geq 3$ or IB Test $\geq 4$ in English, Math, Social Studies or Science	89%	71	87	75%	YES
<b>Summary</b>		<b>77</b>	<b>80</b>		<b>100%</b>

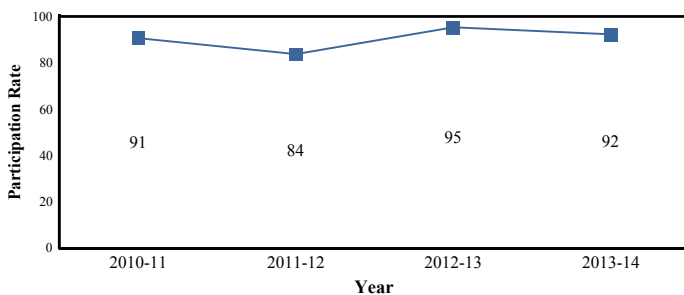
**College Readiness Test Participation**

The first column of the table below presents the percentage of students enrolled in the 12th grade who took the SAT or ACT and the percentage of students enrolled in 10th and 11th grade who took the PSAT. The second column provides the average across the school's peer group for these two metrics.

2013-14 Percent of Students	School	Peer Avg.	State Avg.
Participating in SAT	92.3%	87.1%	76.2%
Participating in ACT	38.9%		22.5%
Participating in PSAT or PLAN	88.8%	80.5%	75.0%

**Participation Trends - SAT Testing**

This graph presents the participation rate in the SAT over the last four years.



**AP/IB Participation - 'Unique' Students**

The table below presents the proportion of 'unique' students enrolled in at least 11th and 12th grade i.e., each student is counted once regardless of how many AP or IB courses he/she may take. The table also presents the proportion of how many 'unique' students took at least one AP or IB test to the school's enrollment in 11th and 12th grade.

2013-14 Percent of Students Taking	School	Peer Avg.	State Avg.
One or More Course	49.9%	44.5%	34.2%
One or More Test	49.6%	38.5%	28.4%
At least one AP or IB Test in English, Math, Social Studies or Science	40.6%	30.9%	18.9%

Note: Students who are enrolled in AP/IB coursework or take AP/IB tests in grades other than 11th and 12th are included in the numerator of this calculation.

**AP /IB Test Results**

This table presents the percentage of all AP/IB tests taken by students enrolled in the school that were scored AP  $\geq 3$  and scored IB  $\geq 4$ .

2013-14	School	Peer Avg.	State Avg.
Percent of AP Tests $\geq 3$ or IB Test $\geq 4$	86.1%	81.8%	74.1%
Percent of Scores in AP $\geq 3$ or IB $\geq 4$ in English, Math, Social Studies or Science	89.4%	81.4%	72.4%

**COLLEGE AND CAREER READINESS**

MORRIS  
MADISON BORO

GRADE SPAN 09-12

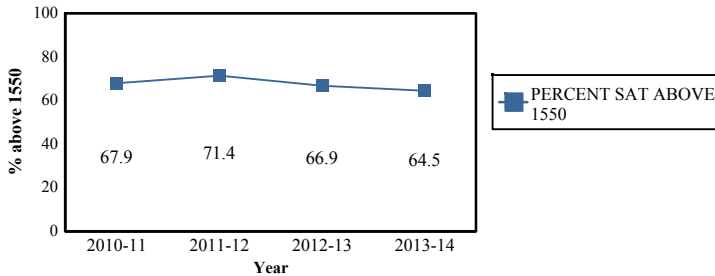
**Scholastic Assessment Test (SAT) Results**

This table presents the percentage of students who achieved a composite SAT score of 1550 or higher. The SAT benchmark score of 1550 (Critical Reading, Mathematics and Writing Score combined) indicates a 65 percent likelihood of achieving a B- average or higher during the first year of college, which in turn has been found by the College Board's research to be indicative of a high likelihood of college success and completion.

2013-14	School	Peer Avg.	State Avg.
Percent of Students Scoring Above 1550 on SAT	64.5%	58.3%	44.6%

**SAT Benchmark Trends**

This chart presents the percentage of students who achieved a composite SAT score of 1550 or higher over the past four years.



**Composite SAT Score**

This chart presents the average composite SAT score from the last academic year for students enrolled in this school as well as the average scores achieved in Critical Reading, Mathematics and Writing. The averages from this school's peer group are also presented.

2013-14	School	Peer Avg.	State Avg.
Composite SAT Score	1,689	1,623	1,514
Critical Reading	559	531	496
Mathematics	562	558	521
Writing	568	534	497

This chart presents the scores achieved in Critical Reading, Mathematics and Writing by the students at the 25th percentile, the 50th percentile and the 75th percentile of the school's distribution of SAT scores.

2013-14	Critical Reading	Mathematics	Writing
75th Percentile	630	630	640
50th Percentile	550	570	570
25th Percentile	480	490	490

**AP/IB Courses Offered**

This table presents the count of students enrolled in each AP/IB course offered in this school in the first column. The second column presents the count of tests taken in each AP/IB course. The numbers may not match as some students do not take the test in the same year as they take the course and some students may take the course without taking the test or vice versa.

AP/IB Course Name	Students Enrolled	Students Tested
AP Psychology	77	73
AP Physics B	54	50
AP U.S. History	51	51
AP Statistics	48	47
AP Environmental Science	31	31
AP U.S. Government and Politics	23	21
AP English Literature and Composition	21	21
AP English Language and Composition	18	19
AP Spanish Language	17	17
AP French Language	7	7
AP Physics C	2	2
AP Calculus BC	2	3
AP Microeconomics		4
AP Macroeconomics		2



**COLLEGE AND CAREER READINESS**

MORRIS  
MADISON BORO

GRADE SPAN 09-12

**Visual and Performing Arts**

The chart below contains the percentage of students who were enrolled in at least one Dance, Drama/Theater, Music or Visual Arts class in this school. The last row shows the percentage of students who were enrolled in any Visual and Performing Arts classes in the school.

Percent of Students Enrolled	School	State
Dance	0.6%	2.1%
Drama/Theater	N/R	3.9%
Music	25.3%	17.5%
Visual Arts	36.3%	31.1%
<b>Total: All Visual and Performing Arts</b>	<b>58.6%</b>	<b>49.3%</b>

N/R - Data Not Reported

**Career in Technical Education Programs**

The chart below contains percentage of students who were participants in an approved Career and Technical Education Program in this school as well as across the State of New Jersey.

Percent of Students Enrolled	School	State
Participating in CTE	0.4%	19.2%

N/R - Data Not Reported

**GRADUATION AND POSTSECONDARY**

**MADISON HIGH SCHOOL**  
**170 RIDGEDALE AVENUE**  
**MADISON, NJ 07940**

**MORRIS**  
**MADISON BORO**

**GRADE SPAN 09-12**

This section of the performance report presents data about graduation, dropout and post-secondary attendance. The graduation rate is calculated according to the NCLB Cohort methodology as required by the United States Department of Education. Dropout rates are calculated from student-level data submitted by districts for students officially classified as dropouts. The dropout rate is the count of students who dropout in an academic year divided by the school's total enrollment.

The first column - Schoolwide Performance - represents the outcomes for these particular indicators in this school. The second column - Peer School Percentile - indicates how the school's performance compares to its group of peer schools. For example, a school whose peer percentile is 65 in Graduation Rate has a higher Graduation Rate than 65% of its peer group. The third column - Statewide Percentile - indicates how the school's performance compares to schools across the state. The fourth column - Statewide Target - provides the statewide targets for each of these indicators. The Statewide Target for Graduation Rate was established pursuant to NJDOE's NCLB Accountability Workbook. The last column - Met Target - indicates whether the School Performance met or exceeded the statewide target.

The Summary row presents the averages of the peer school percentile, the average of statewide percentile and the percentage of statewide targets met.

Graduation & Post Secondary Indicators	Schoolwide Performance	Peer Percentile	Statewide Percentile	Statewide Targets	Met Target
Overall Graduation Rate	96%	46	71	78%	YES
Dropout Rate	0.4%	19	46	2%	YES
<b>SUMMARY - Graduation &amp; Post-Secondary</b>		<b>33</b>	<b>59</b>		<b>100%</b>

**Graduation Rate by Subgroup**

This table presents for all NCLB-identified subgroups the "4-year Adjusted Graduation Rate." This rate calculates the percentage of students who are awarded a regular, high school diploma within four years of becoming a first-time ninth grader. The rate is adjusted to account for students who 'transfer-in' and for students who are verified as 'transfers-out'.

	School	State Target
<b>Schoolwide</b>	96%	78%
White	98%	
Black	-	
Hispanic	-	
American Indian	-	
Asian	-	
Native Hawaiian	-	
Two or More Races	-	
Students with Disability	-	
Limited English Proficient Students	-	
Economically Disadvantaged Students	-	

**Dropout Rate by Subgroup**

This table presents for all NCLB-identified subgroups the Dropout rate. This rate calculates the percentage of students who are classified as dropouts divided by the school's total enrollment and by each subgroup enrollment.

	School	State Target
<b>Schoolwide</b>	.4%	2%
White	0%	
Black	-	
Hispanic	2.7%	
American Indian	-	
Asian	1.9%	
Native Hawaiian	-	
Two or More Races	-	
Students with Disability	.8%	
Economically Disadvantaged Students	3.3%	
Limited English Proficiency	-	



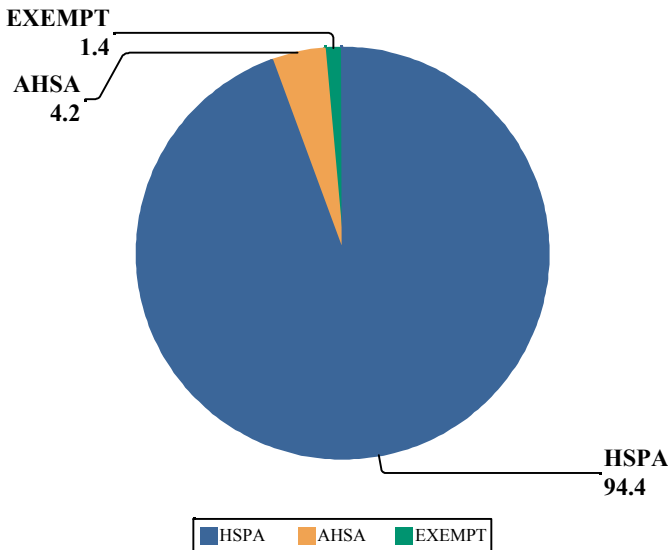
**GRADUATION AND POSTSECONDARY**

MORRIS  
MADISON BORO

GRADE SPAN 09-12

**Graduation Pathway Rates**

This chart presents the percentage of high school graduates who graduated by passing both sections of the HSPA, who were exempt from passing the HSPA, or who demonstrated proficiency through an alternative pathway such as through the Alternative High School Assessment, achievement of the 'Just Proficient Mean' or an appeal process.



**Extended Year Graduation Rate**

The chart below presents the 4-year and 5-year graduation rate for the prior school year's cohort in addition to the 4-year graduation rate for last year's cohort.

Class of	4-year Rate	5-year Rate
2012	96%	97%
2013	95%	96%
2014	96%	

**Postsecondary Enrollment Rates**

This chart presents the enrollment rates of this school's high school graduates, 16-months after high school graduation. The data is from the National Student Clearinghouse which reports that it collects student-level enrollment data from 95% of Institutions of Higher Education nationwide.

The last columns indicate, for the schoolwide total and each subgroup, the percentage of postsecondary enrollees that were enrolled in either a 2 year or a 4 year institution.

	Percent Enrolled	Percent in 2 Year	Percent in 4 Year
<b>Schoolwide</b>	85%	7.7%	92.3%
White	86.3%	6.7%	93.3%
Black	-	-	-
Hispanic	-	-	-
Asian	-	-	-
American Indian	-	-	-
Native Hawaiian	-	-	-
Two or More Races	-	-	-
Students with Disability	-	-	-
Limited English Proficient Students	-	-	-
Economically Disadvantaged Students	-	-	-

**WITHIN SCHOOL ACHIEVEMENT GAP**

MORRIS  
MADISON BORO

GRADE SPAN 09-12

This section of the performance report presents data about the achievement gap that exists within a school - as measured by the difference between the students' scale scores at the 25th and 75th percentile in the school, the so-called Interquartile Range (IQR). Taken together with an understanding of the overall and average achievement levels in the school, the IQR furthers an understanding of the range of student outcomes that exist in a school. A school gap smaller than the state gap indicates that the school's range of student outcomes is narrower than the state's while a school gap larger than the state gap indicates that the school's range of student outcomes is larger than the state's.

**High School**

**HSPA Language Arts 25th %ile vs 75th%ile**

This table presents the scale scores associated with students at the bottom (0th percentile), the 25th percentile, the 50th percentile, the 75th percentile and the top (99th percentile) of school's distribution.

Percentile	School Scaled Score	State Scaled Score
99th	271	287
75th	258	250
50th	250	240
25th	241	224
0th	154	100

	Scaled Score Gap - School	Scaled Score Gap - State
25th vs 75th Gap	17	26

**High School**

**HSPA Math 25th %ile vs 75th%ile**

This table presents the scale scores associated with students at the bottom (0th percentile), the 25th percentile, the 50th percentile, the 75th percentile and the top (99th percentile) of school's distribution.

Percentile	School Scaled Score	State Scaled Score
99th	273	300
75th	259	253
50th	247	232
25th	227	208
0th	159	132

	Scaled Score Gap - School	Scaled Score Gap - State
25th vs 75th Gap	32	45

**SCHOOL CLIMATE**

MORRIS  
MADISON BORO

GRADE SPAN 09-12

**Length of School Day**

This table presents the amount of time a school is in session for a typical student on a normal school day.

	School
2013-14	6 Hrs. 55 Mins.

**Student Suspension Rate**

This table presents the percentage of students who were suspended one or more times during the school year.

	School
2013-14	2.1%

**Instructional Time**

This table presents the amount of time that a typical student is engaged in instructional activities under the supervision of a certified teacher.

2013-14	School
Full Time	5 Hrs. 58 Mins.
Shared Time	3 Hrs. 0 Mins.

**Student Expulsions**

This table presents the number of students who were expelled from the school and district during the school year.

	School
2013-14	0

**Student to Staff Ratio**

This table presents the count of students per faculty member or administrator in the school. All staff are counted in full-time equivalents.

2013-14	School
Faculty	13
Administrators	280

This table presents the list of peer schools in alphabetical order by county name that was created specifically for this school (highlighted in yellow). Peer schools are drawn from across the state and represent schools that have similar grade configurations and that are educating students of similar demographic characteristics, as measured by enrollment in Free/Reduced Lunch Programs, Limited English Proficiency or Special Education Programs.

<u>COUNTY NAME</u>	<u>DISTRICT NAME</u>	<u>SCHOOL NAME</u>	<u>CDS CODE</u>	<u>GRAD ESPAN</u>	<u>FRPL</u>	<u>LEP</u>	<u>SpED</u>
BERGEN	CRESSKILL BORO	CRESSKILL HIGH SCHOOL	03-0990-040	09-12	4.2%	2.7%	11.5%
BERGEN	EMERSON BORO	EMERSON JR SR HIGH	03-1360-050	07-12	8.0%	0.4%	15.9%
BERGEN	MIDLAND PARK BORO	MIDLAND PARK JR./SR. HIGH SCHOOL	03-3170-050	07-12	6.2%	0.8%	12.9%
BERGEN	PARAMUS BORO	PARAMUS HIGH SCHOOL	03-3930-050	09-12	7.0%	0.9%	16.6%
BERGEN	PARK RIDGE BORO	PARK RIDGE HIGH SCHOOL	03-3940-050	07-12	5.2%	0.5%	14.2%
BERGEN	WALDWICK BORO	WALDWICK HIGH SCHOOL	03-5410-030	09-12	1.3%	2.2%	14.7%
BERGEN	WESTWOOD REGIONAL	WESTWOOD JUNIOR/SENIOR HIGH SCHOOL	03-5755-050	PK-12	7.7%	0.1%	13.6%
BURLINGTON	LENAPE REGIONAL	SHAWNEE HIGH SCHOOL	05-2610-060	09-12	6.3%	0.1%	13.0%
ESSEX	CEDAR GROVE TWP	CEDAR GROVE HIGH SCHOOL	13-0760-050	09-12	5.8%	0.7%	11.3%
HUNTERDON	DELAWARE VALLEY REGIONAL	DELAWARE VALLEY REGIONAL HIGH SCHOOL DISTRICT	19-1050-040	09-12	7.4%	0.0%	12.5%
HUNTERDON	HUNTERDON CENTRAL REG	HUNTERDON CENTRAL REGIONAL HIGH SCHOOL	19-2300-050	09-12	7.4%	0.8%	13.6%
HUNTERDON	N HUNT/VOORHEES REGIONAL	VOORHEES HIGH SCHOOL	19-3660-060	09-12	5.2%	0.0%	14.6%
MERCER	ROBBINSVILLE TWP	ROBBINSVILLE HIGH SCHOOL	21-5510-030	09-12	4.8%	0.1%	11.5%
MERCER	W WINDSOR-PLAINSBORO REG	WEST WINDSOR-PLAINSBORO HIGH SCHOOL SOUTH	21-5715-020	09-12	4.4%	1.8%	10.0%
MONMOUTH	FREEHOLD REGIONAL	HOWELL HIGH SCHOOL	25-1650-060	09-12	7.8%	0.0%	12.1%
MONMOUTH	FREEHOLD REGIONAL	MANALAPAN HIGH SCHOOL	25-1650-070	09-12	7.4%	0.0%	11.9%
MONMOUTH	MIDDLETOWN TWP	MIDDLETOWN HIGH SCHOOL SOUTH	25-3160-053	09-12	8.4%	0.1%	16.5%
MONMOUTH	UPPER FREEHOLD REGIONAL	ALLENTOWN HIGH SCHOOL	25-5310-050	09-12	8.4%	0.2%	14.0%
<b>MORRIS</b>	<b>MADISON BORO</b>	<b>MADISON HIGH SCHOOL</b>	<b>27-2870-050</b>	<b>09-12</b>	<b>7.2%</b>	<b>0.4%</b>	<b>14.8%</b>
MORRIS	MORRIS HILLS REGIONAL	MORRIS KNOLLS HIGH SCHOOL	27-3370-060	09-12	9.5%	0.0%	18.8%
MORRIS	PEQUANNOCK TWP	PEQUANNOCK TOWNSHIP HIGH SCHOOL	27-4080-050	09-12	4.6%	0.4%	15.0%
MORRIS	RANDOLPH TWP	RANDOLPH HIGH SCHOOL	27-4330-050	09-12	6.1%	0.6%	14.1%
MORRIS	ROXBURY TWP	ROXBURY HIGH SCHOOL	27-4560-050	09-12	7.9%	0.4%	13.5%
PASSAIC	WAYNE TWP	WAYNE VALLEY HIGH SCHOOL	31-5570-050	09-12	9.8%	0.0%	11.0%
SOMERSET	BRIDGEWATER-RARITAN REG	BRIDGEWATER-RARITAN REGIONAL HIGH SCHOOL	35-0555-005	09-12	8.4%	0.5%	17.2%
SOMERSET	HILLSBOROUGH TWP	HILLSBOROUGH HIGH SCHOOL	35-2170-030	09-12	7.8%	1.0%	14.1%
SOMERSET	MONTGOMERY TWP	MONTGOMERY HIGH SCHOOL	35-3320-030	09-12	3.8%	0.7%	11.3%
UNION	CLARK TWP	ARTHUR L. JOHNSON HIGH SCHOOL	39-0850-005	PK-12	5.7%	1.0%	9.6%
UNION	NEW PROVIDENCE BORO	NEW PROVIDENCE HIGH SCHOOL	39-3560-050	09-12	4.3%	0.5%	11.0%
UNION	SCOTCH PLAINS-FANWOOD REG	SCOTCH PLAINS-FANWOOD HIGH SCHOOL	39-4670-050	09-12	6.6%	0.5%	10.4%
WARREN	NORTH WARREN REGIONAL	NORTH WARREN REGIONAL SCHOOL DISTRICT	41-3675-050	07-12	8.5%	0.0%	15.2%