



State of New Jersey

2014-15

39-5730-160

WILSON ELEMENTARY SCHOOL

301 LINDEN AVE

WESTFIELD, NJ 07090-1923

OVERVIEW

UNION

WESTFIELD TOWN

GRADE SPAN 01-05

The New Jersey Department of Education (NJDOE) is pleased to present these annual reports of School Performance. These reports are designed to inform parents, educators and communities about how well a school is performing and preparing its students for college and careers.

In particular, the School Performance Reports seek to:

- **Focus** attention on metrics that are indicative of college and career readiness.
- **Benchmark** a school's performance against other peer schools that are educating similar students, against statewide outcomes, and against state targets to illuminate and build upon a school's strengths and identify areas for improvement.
- **Improve** educational outcomes for students by providing both longitudinal and growth data so that progress can be measured as part of an individual school's efforts to engage in continuous improvement.

While the New Jersey School Performance Reports seek to bring more information to educators and stakeholders about the performance of schools, they do not seek to distill the performance of schools into a single metric, a single score, or a simplified conclusion. Instead, the intention is that educators and stakeholders will engage in deep, lengthy conversations about the full range of the data presented. As educators know well, measuring school performance is both an art and a science. While the School Performance Report brings attention to important student outcomes, NJDOE does not collect data about other essential elements of a school, such as the provision of opportunities to participate and excel in extracurricular activities; the development of non-cognitive skills like time management and perseverance; the pervasiveness of a positive school culture or climate; or the attainment of other employability and technical skills, as many of these data are beyond both the capacity and resources of schools to measure and collect well.

To learn more about New Jersey's school accountability system, please visit: <http://www.nj.gov/education/educators/>.

DEMOGRAPHIC INFORMATION

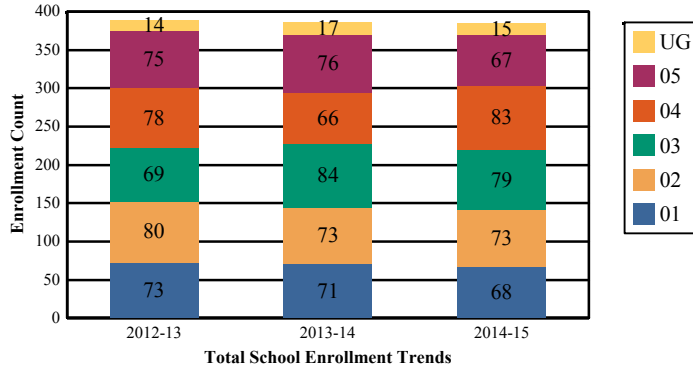
UNION
WESTFIELD TOWN

GRADE SPAN 01-05

39-5730-160
WILSON ELEMENTARY SCHOOL
301 LINDEN AVE
WESTFIELD, NJ 07090-1923

Enrollment by Grade

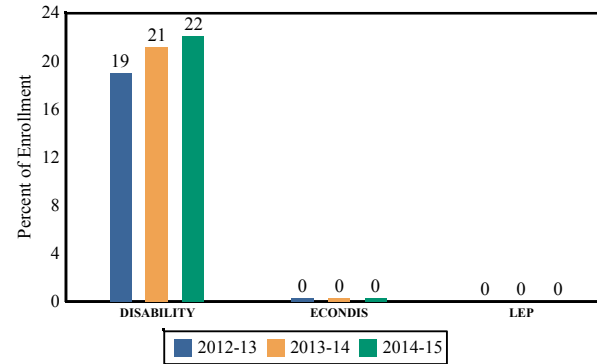
This graph presents the count of students who were 'on roll' by grade in October of each school year.



Note: "UG" represents the count of students who are 'on roll' in this school but who are educated in ungraded classrooms, meaning that the classrooms may contain students from multiple grade levels.

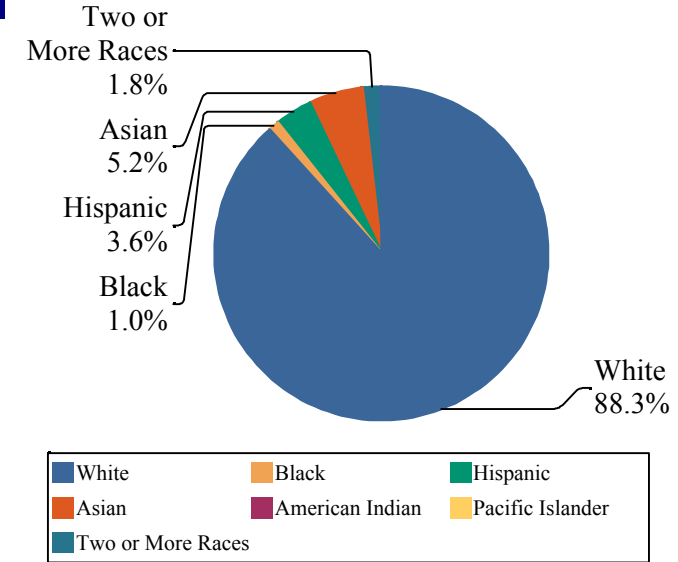
Enrollment Trends by Program Participation

This graph presents the percentages of students by program participation who were 'on roll' in October of each school year.



Enrollment by Ethnic/Racial Subgroup

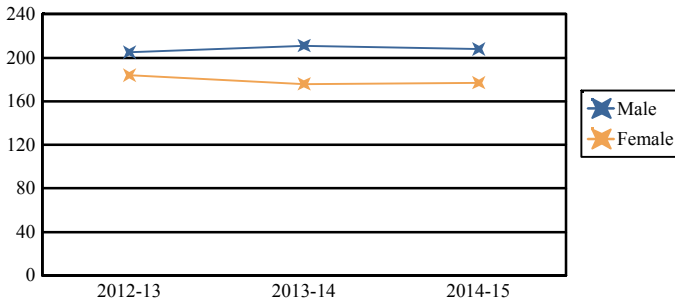
This graph presents the percentages of enrollment for each subgroup defined by the No Child Left Behind Act of 2001.



Total School Enrollment	
2012-13	389
2013-14	387
2014-15	385

Enrollment by Gender

This graph presents the count of students by gender who were 'on roll' in October of each school year.



	Male	Female
2012-13	205	184
2013-14	211	176
2014-15	208	177

Current Year Enrollment by Program Participation

2014-15	Count of Students	% of Enrollment
Students with Disability	85	22%
Economically Disadvantaged Students	1	0.3%
English Language Learners	0	0.0%

Language Diversity

This table presents the percentage of students who primarily speak each language in their home.

2014-15	Percent
English	90.4%
German	1.3%
Chinese	1.3%
Russian	1.0%
French	1.0%
Gujarati	1.0%
Other	3.9%

ACADEMIC ACHIEVEMENT

UNION

GRADE SPAN 01-05

WESTFIELD TOWN

The Academic Achievement section measures the content knowledge that students have in English Language Arts/Literacy (ELA/L) and Math as demonstrated in the 2014-2015 *Partnership for Assessment of Readiness for College and Careers* (PARCC) assessments. The below chart consist of three columns. The first column - Schoolwide Performance - includes the percentage of students in ELA/L and Math who met or exceeded grade level expectations. The middle column - Peer School Percentile - indicates how the school's outcomes compared to its peers. The last column - Statewide Percentile - indicates how the school's outcomes compared to schools across the state.

Academic Achievement Indicators	Schoolwide Performance	Peer Percentile	State Percentile
English Language Arts/Literacy Met or Exceeded Expectation	79%	65	94
Math Met or Exceeded Expectation	67%		

ESEA Waiver - English Language Arts/Literacy

This table presents, for each subgroup in the school, the total number of valid test scores, the percentage of students who met or exceeded expectations, the assessment participation goal, and the participation rate. The participation goal is established as 95% by the United States Department of Education.

Subgroups	Valid Scores	% Meeting Standards	Participation Goal	Participation Rate	Met Participation?
Schoolwide	217	78.8%	95%	97.8%	YES
White	193	79.3%	95%	99%	YES
African American	-	-	--	--	--
Hispanic	-	-	--	--	--
American Indian	-	-	--	--	--
Asian	-	-	--	--	--
Two or More Races	-	-	--	--	--
Students with Disability	48	54.1%	95%	98%	YES
English Language Learners	-	-	--	--	--
Economically Disadvantaged Students	-	-	--	--	--

YES* = Met Participation Rate (Participation Averaging applied)

Data is presented for subgroups when the count is high enough under ESEA Waiver suppression rules.

ACADEMIC ACHIEVEMENT

WILSON ELEMENTARY SCHOOL
301 LINDEN AVE
WESTFIELD, NJ 07090-1923

UNION
WESTFIELD TOWN

GRADE SPAN 01-05

ESEA Waiver - Math

This table presents, for each subgroup in the school, the total number of valid test scores, the percentage of students who met or exceeded expectations, the assessment participation goal, and the participation rate. The participation goal is established as 95% by the United States Department of Education.

Subgroups	Valid Scores	% Meeting Standards	Participation Goal	Participation Rate	Met Participation?
Schoolwide	218	66.5%	95%	98.7%	YES
White	193	67.3%	95%	99%	YES
African American	-	-	--	--	--
Hispanic	-	-	--	--	--
American Indian	-	-	--	--	--
Asian	-	-	--	--	--
Two or More Races	-	-	--	--	--
Students with Disability	48	35.4%	95%	98%	YES
English Learner Students	-	-	--	--	--
Economically Disadvantaged Students	-	-	--	--	--

YES* = Met Participation Rate (Participation Averaging applied)

Data is presented for subgroups when the count is high enough under ESEA Waiver suppression rules.

PARCC Performance Level

The PARCC assesses how well students have learned grade-level material in English Language Arts/Literacy (ELA/L) and Math. The tests include questions that measure students’ fundamental skills and knowledge, and require them to think critically, solve problems and support or explain their answers.

The PARCC reports students’ overall scale scores that range from 650 to 850. To determine whether students have met academic expectations for their grade level/course in ELA/L and Math, students’ overall scale scores are categorized into five Performance Levels. Students performing at levels 4 and 5 (met or exceeded expectations) have demonstrated readiness for the next grade level/course, and are on track for college and careers.

Five Performance Levels				
Level 1: Did Not Yet Meet Expectations <i>(Min. 650)</i>	Level 2: Partially Met Expectations	Level 3: Approached Expectations	Level 4: Met Expectations	Level 5: Exceeded Expectations <i>(Max. 850)</i>

ACADEMIC ACHIEVEMENT

UNION
WESTFIELD TOWN

WILSON ELEMENTARY SCHOOL
301 LINDEN AVE
WESTFIELD, NJ 07090-1923

GRADE SPAN 01-05

PARCC ELA Performance Distribution - Grade - 03

This table presents the grade level outcomes, as measured by PARCC, in all five performance levels for all subgroups. PARCC consists of five performance levels: Level 1 - Did not yet meet grade-level expectations, Level 2 -Partially met expectations, Level 3 - Approached expectations, Level 4 - Met expectations, and Level 5 - Exceeded expectations.

Subgroup	Valid Scores	Mean Scale Score	State Mean Scale Score	% Level_1	% Level_2	% Level_3	% Level_4	% Level_5	% Met/ Exceeded Expectation	State % Met/Exceeded Expectation
Schoolwide	72	774	744	0%	1%	24%	61%	14%	75%	44%
White	60	774	753	0%	2%	23%	63%	12%	75%	55%
African American	-	-	725	-	-	-	-	-	-	26%
Hispanic	-	-	727	-	-	-	-	-	-	26%
American Indian	-	-	738	-	-	-	-	-	-	40%
Asian	-	-	769	-	-	-	-	-	-	70%
Two or More Races	-	-	751	-	-	-	-	-	-	53%
Students with Disability	13	755	718	0%	0%	38%	62%	0%	62%	24%
English Language Learners	-	-	709	-	-	-	-	-	-	11%
Economically Disadvantaged Students	-	-	724	-	-	-	-	-	-	24%

ACADEMIC ACHIEVEMENT

WILSON ELEMENTARY SCHOOL
301 LINDEN AVE
WESTFIELD, NJ 07090-1923

UNION
WESTFIELD TOWN

GRADE SPAN 01-05

PARCC ELA Performance Distribution - Grade - 04

This table presents the grade level outcomes, as measured by PARCC, in all five performance levels for all subgroups. PARCC consists of five performance levels: Level 1 - Did not yet meet grade-level expectations, Level 2 -Partially met expectations, Level 3 - Approached expectations, Level 4 - Met expectations, and Level 5 - Exceeded expectations.

Subgroup	Valid Scores	Mean Scale Score	State Mean Scale Score	% Level_1	% Level_2	% Level_3	% Level_4	% Level_5	% Met/Exceeded Expectation	State % Met/Exceeded Expectation
Schoolwide	78	770	751	0%	0%	22%	58%	21%	78%	52%
White	72	771	758	0%	0%	22%	56%	22%	78%	63%
African American	-	-	733	-	-	-	-	-	-	30%
Hispanic	-	-	737	-	-	-	-	-	-	35%
American Indian	-	-	746	-	-	-	-	-	-	52%
Asian	-	-	773	-	-	-	-	-	-	78%
Two or More Races	-	-	760	-	-	-	-	-	-	62%
Students with Disability	21	753	725	0%	0%	57%	33%	10%	43%	25%
English Language Learners	-	-	717	-	-	-	-	-	-	15%
Economically Disadvantaged Students	-	-	734	-	-	-	-	-	-	31%

ACADEMIC ACHIEVEMENT

WILSON ELEMENTARY SCHOOL
301 LINDEN AVE
WESTFIELD, NJ 07090-1923

UNION
WESTFIELD TOWN

GRADE SPAN 01-05

PARCC ELA Performance Distribution - Grade - 05

This table presents the grade level outcomes, as measured by PARCC, in all five performance levels for all subgroups. PARCC consists of five performance levels: Level 1 - Did not yet meet grade-level expectations, Level 2 -Partially met expectations, Level 3 - Approached expectations, Level 4 - Met expectations, and Level 5 - Exceeded expectations.

Subgroup	Valid Scores	Mean Scale Score	State Mean Scale Score	% Level_1	% Level_2	% Level_3	% Level_4	% Level_5	% Met/Exceeded Expectation	State % Met/Exceeded Expectation
Schoolwide	67	773	751	1%	1%	13%	70%	13%	84%	53%
White	61	774	757	2%	0%	13%	72%	13%	85%	62%
African American	-	-	734	-	-	-	-	-	-	31%
Hispanic	-	-	737	-	-	-	-	-	-	35%
American Indian	-	-	746	-	-	-	-	-	-	45%
Asian	-	-	771	-	-	-	-	-	-	77%
Two or More Races	-	-	758	-	-	-	-	-	-	61%
Students with Disability	14	754	723	7%	7%	21%	50%	14%	64%	21%
English Language Learners	-	-	717	-	-	-	-	-	-	15%
Economically Disadvantaged Students	-	-	734	-	-	-	-	-	-	31%

ACADEMIC ACHIEVEMENT

UNION
WESTFIELD TOWN

WILSON ELEMENTARY SCHOOL
301 LINDEN AVE
WESTFIELD, NJ 07090-1923

GRADE SPAN 01-05

PARCC MATH - Performance Distribution - Grade - 03

This table presents the grade level outcomes, as measured by PARCC, in all five performance levels for all subgroups. PARCC consists of five performance levels: Level 1 - Did not yet meet grade-level expectations, Level 2 -Partially met expectations, Level 3 - Approached expectations, Level 4 - Met expectations, and Level 5 - Exceeded expectations.

Subgroup	Valid Scores	Mean Scale Score	State Mean Scale Score	% Level_1	% Level_2	% Level_3	% Level_4	% Level_5	% Met/ Exceeded Expectation	State % Met/Exceeded Expectation
Schoolwide	72	768	746	0%	3%	18%	63%	17%	79%	46%
White	60	768	752	0%	2%	17%	67%	15%	82%	56%
African American	-	-	728	-	-	-	-	-	-	25%
Hispanic	-	-	733	-	-	-	-	-	-	28%
American Indian	-	-	742	-	-	-	-	-	-	41%
Asian	-	-	772	-	-	-	-	-	-	77%
Two or More Races	-	-	751	-	-	-	-	-	-	54%
Students with Disability	13	755	727	0%	0%	46%	46%	8%	54%	27%
English Language Learners	-	-	724	-	-	-	-	-	-	17%
Economically Disadvantaged Students	-	-	730	-	-	-	-	-	-	26%

ACADEMIC ACHIEVEMENT

WILSON ELEMENTARY SCHOOL
301 LINDEN AVE
WESTFIELD, NJ 07090-1923

UNION
WESTFIELD TOWN

GRADE SPAN 01-05

PARCC MATH - Performance Distribution - Grade - 04

This table presents the grade level outcomes, as measured by PARCC, in all five performance levels for all subgroups. PARCC consists of five performance levels: Level 1 - Did not yet meet grade-level expectations, Level 2 -Partially met expectations, Level 3 - Approached expectations, Level 4 - Met expectations, and Level 5 - Exceeded expectations.

Subgroup	Valid Scores	Mean Scale Score	State Mean Scale Score	% Level_1	% Level_2	% Level_3	% Level_4	% Level_5	% Met/ Exceeded Expectation	State % Met/Exceeded Expectation
Schoolwide	79	756	744	0%	8%	34%	51%	8%	58%	42%
White	72	757	749	0%	8%	32%	51%	8%	60%	50%
African American	-	-	727	-	-	-	-	-	-	20%
Hispanic	-	-	732	-	-	-	-	-	-	26%
American Indian	-	-	740	-	-	-	-	-	-	40%
Asian	-	-	769	-	-	-	-	-	-	75%
Two or More Races	-	-	750	-	-	-	-	-	-	52%
Students with Disability	21	737	724	0%	24%	52%	24%	0%	24%	21%
English Language Learners	-	-	722	-	-	-	-	-	-	15%
Economically Disadvantaged Students	-	-	730	-	-	-	-	-	-	23%

ACADEMIC ACHIEVEMENT

WILSON ELEMENTARY SCHOOL
301 LINDEN AVE
WESTFIELD, NJ 07090-1923

UNION
WESTFIELD TOWN

GRADE SPAN 01-05

PARCC MATH - Performance Distribution - Grade - 05

This table presents the grade level outcomes, as measured by PARCC, in all five performance levels for all subgroups. PARCC consists of five performance levels: Level 1 - Did not yet meet grade-level expectations, Level 2 -Partially met expectations, Level 3 - Approached expectations, Level 4 - Met expectations, and Level 5 - Exceeded expectations.

Subgroup	Valid Scores	Mean Scale Score	State Mean Scale Score	% Level_1	% Level_2	% Level_3	% Level_4	% Level_5	% Met/ Exceeded Expectation	State % Met/Exceeded Expectation
Schoolwide	67	759	744	1%	6%	30%	54%	9%	63%	42%
White	61	758	749	2%	5%	31%	56%	7%	62%	49%
African American	-	-	728	-	-	-	-	-	-	21%
Hispanic	-	-	733	-	-	-	-	-	-	26%
American Indian	-	-	745	-	-	-	-	-	-	46%
Asian	-	-	768	-	-	-	-	-	-	74%
Two or More Races	-	-	749	-	-	-	-	-	-	50%
Students with Disability	14	742	724	7%	21%	36%	36%	0%	36%	19%
English Language Learners	-	-	724	-	-	-	-	-	-	17%
Economically Disadvantaged Students	-	-	731	-	-	-	-	-	-	23%

2015 National Assessment Educational Progress (NAEP)

The National Assessment of Educational Progress (NAEP) is the largest national assessment of what our nation's students know and can do. NAEP assesses fourth-, eighth-, and twelfth-grade students in subjects such as reading, mathematics, science, and writing. The reporting of NAEP scores on state report cards is a federal mandate. The results of NAEP are also published as the Nation's Report Card, and are available for the nation, states, and, in some cases, urban districts. The NAEP scores on the report card include grades four and eight 2015 reading and math scores for New Jersey which are the last scores published.

For subgroup outcomes, visit:

- Reading Grade 4 <http://www.nj.gov/education/pr/1415/naep/naep4read.html>
- Reading Grade 8 <http://www.nj.gov/education/pr/1415/naep/naep8read.html>
- Math Grade 4 <http://www.nj.gov/education/pr/1415/naep/naep4math.html>
- Math Grade 8 <http://www.nj.gov/education/pr/1415/naep/naep8math.html>

For more information, visit <http://nces.ed.gov/nationsreportcard/>

Proficiency Percentages

Subject	Grade	State/Nation	Below Basic	Basic	Proficient	Advanced
Reading	Grade 4	State (NJ)	25	33	31	12
	Grade 4	Nation	31	33	27	9
	Grade 8	State (NJ)	20	39	35	6
	Grade 8	Nation	24	42	31	4
Math	Grade 4	State (NJ)	14	39	38	9
	Grade 4	Nation	18	42	33	7
	Grade 8	State (NJ)	21	32	30	16
	Grade 8	Nation	29	38	25	8

ACADEMIC ACHIEVEMENT

UNION
WESTFIELD TOWN

GRADE SPAN 01-05

NJASK Results - Science Grade Level - 04

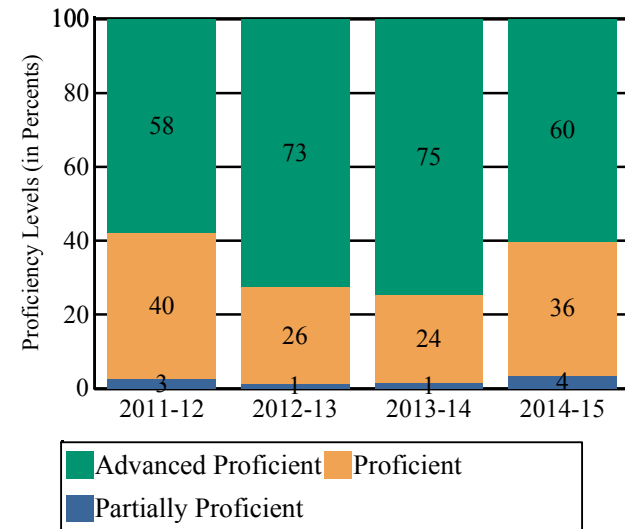
This table presents the grade level proficiency results, as measured by NJASK, in Advanced Proficient, Proficient, and Partially Proficient categories for all appropriate subgroups.

Subgroups	Advanced Proficient	Proficient	Partially Proficient
Schoolwide	60%	36%	4%
White	61%	35%	4%
African American	-	-	-
Hispanic	-	-	-
American Indian	-	-	-
Asian	-	-	-
Two or More Races	-	-	-
Students with Disability	23%	64%	14%
English Language Learners	-	-	-
Economically Disadvantaged Students	-	-	-

Data is presented for subgroups when the count is high enough under ESEA Waiver suppression rules.

NJASK Proficiency Trends - Science - Grade Level - 04

This graph presents the grade level outcomes in the categories of Advanced Proficient, Proficient, and Partially Proficient over the last four years.



COLLEGE AND CAREER READINESS

WILSON ELEMENTARY SCHOOL
301 LINDEN AVE
WESTFIELD, NJ 07090-1923

UNION

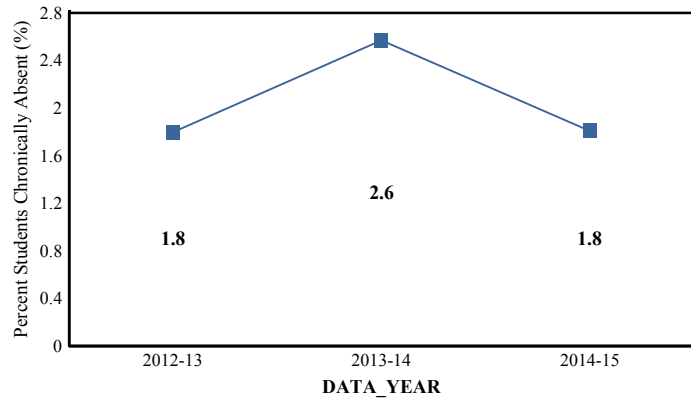
GRADE SPAN 01-05

WESTFIELD TOWN

Students in both elementary and middle schools begin to demonstrate college readiness behaviors long before they even enter high school. Among the behaviors that research has shown to be indicative of successfully graduating high school is regularly attending school. For all elementary schools, this includes the percentage of students that are chronically absent each year, defined as missing more than 10% of possible school days.

Chronic Absenteeism Trend

This graph presents the percentage of the enrolled students who were chronically absent for the past three years.

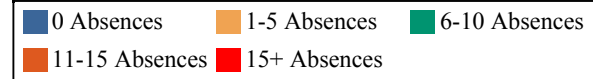
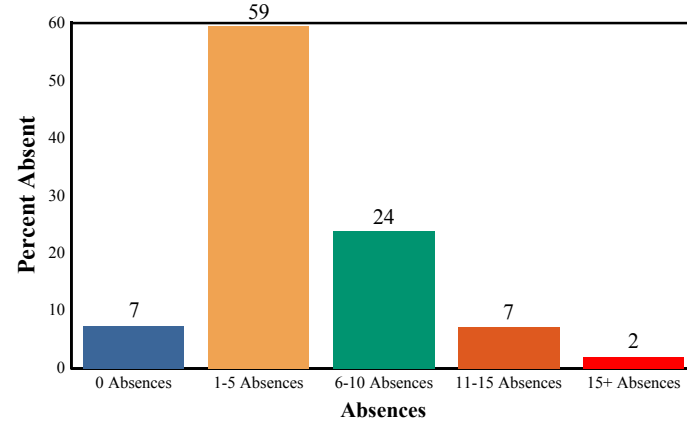


Chronic Absenteeism for 2014-15

1.81%

Absenteeism

The chart below presents the percentage of students who were absent in each category of absence: 0 absences, 1- 5 absences, 6 - 10 absences, 11 - 15 absences, and more than 15 absences. An absence is defined as being ‘not present’ and includes the days missed regardless of whether they were determined to be excused or unexcused by the school.



STUDENT GROWTH

UNION

GRADE SPAN 01-05

WESTFIELD TOWN

This section of the performance report presents data about student growth, utilizing the Student Growth Percentile Methodology (SGP). SGP creates a measure of how students progressed in grades 4 through 8 in Language Arts Literacy and in grades 4 through 7 in Math when compared to other students with a similar test score history. A short video explaining the methodology can be found here: <http://www.state.nj.us/education/njsmart/performance/>

The below chart consist of five columns with measures. The first column - Schoolwide Performance - presents the schoolwide median growth score in either English Language Arts/Literacy or Mathematics for all students in the school. The second column - Peer Percentile - indicates how the school's growth performance compares to its group of peer schools. The third column - Statewide Percentile - indicates how a school compares to schools across the state. The last column - Met Target? - indicates whether the school's performance met or exceeded the statewide target, which was set to 35.

The fourth row presents the averages of the peer school percentiles, the averages of statewide percentiles, the percentage of statewide targets met.

Student Growth Indicators	Schoolwide Performance	Peer Percentile	Statewide Percentile	Statewide Target	Met Target?
Student Growth on Language Arts	56	47	67	35	YES
Student Growth on Math	52	31	48	35	YES
		39	58		100%

Student Growth

This table presents for all students with growth scores the interaction between their performance on PARCC and their growth scores. For example, in the top left cell the percentage of students who are both in Level 1 - Did not yet meet expectations AND also demonstrating low growth is displayed.

Language Arts

(Expectations)	GROWTH		
	Low	Typical	High
Did Not Yet Meet	0%	1%	0%
Partially Met	0%	1%	0%
Approached	7%	9%	1%
Met	17%	22%	25%
Exceeded	0%	5%	13%

Math

(Expectations)	GROWTH		
	Low	Typical	High
Did Not Yet Meet	1%	0%	0%
Partially Met	5%	1%	1%
Approached	11%	15%	6%
Met	10%	24%	19%
Exceeded	0%	0%	8%

Low Growth is defined as an **Student Growth Percentile** score less than 35.

Typical Growth is defined as an **Student Growth Percentile** score between 35 and 65.

High Growth is defined as a **Student Growth Percentile** score higher than 65.

WITHIN SCHOOL ACHIEVEMENT GAP

WILSON ELEMENTARY SCHOOL
301 LINDEN AVE
WESTFIELD, NJ 07090-1923

UNION
WESTFIELD TOWN

GRADE SPAN 01-05

This section of the performance report presents data about the achievement gap that exists within a school - as measured by the difference between the students' scale scores at the 25th and 75th percentile in the school, the Interquartile Range (IQR). Taken together with an understanding of the overall and average achievement levels in the school, the IQR furthers an understanding of the range of student outcomes that exist in a school. A school gap smaller than the state gap indicates that the school's range of student outcomes is narrower than the state's while a school gap larger than the state gap indicates that the school's range of student outcomes is broader than the state's.

Grade Level - 03

Grade Level - 03

PARCC Language Arts 25th %ile vs 75th%ile

PARCC MATH 25th %ile vs 75th%ile

This table presents the scale scores associated with students at the bottom (0th percentile), the 25th percentile, the 50th percentile, the 75th percentile and the top (99th percentile) of school's distribution.

This table presents the scale scores associated with students at the bottom (0th percentile), the 25th percentile, the 50th percentile, the 75th percentile and the top (99th percentile) of school's distribution.

Percentile	School Scale Score	State Scale Score
99th	845	850
75th	796	770
50th	767	743
25th	748	715
0th	724	650

Percentile	School Scale Score	State Scale Score
99th	834	850
75th	783	767
50th	770	745
25th	751	722
0th	689	650

	Scale Score Gap - School	Scale Score Gap - State
25th vs 75th Gap	48	55

	Scale Score Gap - School	Scale Score Gap - State
25th vs 75th Gap	32	45

WITHIN SCHOOL ACHIEVEMENT GAP

UNION

WESTFIELD TOWN

GRADE SPAN 01-05

Grade Level - 04

PARCC Language Arts 25th %ile vs 75th%ile

This table presents the scale scores associated with students at the bottom (0th percentile), the 25th percentile, the 50th percentile, the 75th percentile and the top (99th percentile) of school's distribution.

Percentile	School Scale Score	State Scale Score
99th	814	850
75th	785	773
50th	772	750
25th	753	728
0th	727	650

	Scale Score Gap - School	Scale Score Gap - State
25th vs 75th Gap	32	45

Grade Level - 05

PARCC Language Arts 25th %ile vs 75th%ile

This table presents the scale scores associated with students at the bottom (0th percentile), the 25th percentile, the 50th percentile, the 75th percentile and the top (99th percentile) of school's distribution.

Percentile	School Scale Score	State Scale Score
99th	831	850
75th	787	773
50th	774	751
25th	760	728
0th	696	650

	Scale Score Gap - School	Scale Score Gap - State
25th vs 75th Gap	27	45

Grade Level - 04

PARCC MATH 25th %ile vs 75th%ile

This table presents the scale scores associated with students at the bottom (0th percentile), the 25th percentile, the 50th percentile, the 75th percentile and the top (99th percentile) of school's distribution.

Percentile	School Scale Score	State Scale Score
99th	806	850
75th	772	764
50th	756	742
25th	737	721
0th	710	650

	Scale Score Gap - School	Scale Score Gap - State
25th vs 75th Gap	35	43

Grade Level - 05

PARCC MATH 25th %ile vs 75th%ile

This table presents the scale scores associated with students at the bottom (0th percentile), the 25th percentile, the 50th percentile, the 75th percentile and the top (99th percentile) of school's distribution.

Percentile	School Scale Score	State Scale Score
99th	807	850
75th	773	763
50th	761	743
25th	745	723
0th	697	650

	Scale Score Gap - School	Scale Score Gap - State
25th vs 75th Gap	28	40

SCHOOL CLIMATE

UNION

WESTFIELD TOWN

GRADE SPAN 01-05

Length of School Day

This table presents the amount of time a school is in session for a typical student on a normal school day.

	School
2014-15	6 Hrs. 25 Mins.

Student Suspension Rate

This table presents the percentage of students who were suspended one or more times during the school year.

	School
2014-15	0.0%

Instructional Time

This table presents the amount of time that a typical student is engaged in instructional activities under the supervision of a certified teacher.

2014-15	School
Full Time	5 Hrs. 25 Mins.
Shared Time	0 Hrs. 0 Mins.

Student Expulsions

This table presents the number of students who were expelled from the school and district during the school year.

	School
2014-15	0

Student to Staff Ratio

This table presents the count of students per faculty member or administrator in the school. All staff are counted in full-time equivalents.

2014-15	School
Faculty	12
Administrators	385

SCHOOL PEER GROUP

UNION

WESTFIELD TOWN

GRADE SPAN 01-05

WILSON ELEMENTARY SCHOOL

301 LINDEN AVE

WESTFIELD, NJ 07090-1923

This table presents the list of peer schools in alphabetical order by county name that was created specifically for this school (highlighted in yellow). Peer schools are drawn from across the state and represent schools that have similar grade configurations and that are educating students of similar demographic characteristics, as measured by enrollment in Free/Reduced Lunch Programs, Limited English Proficiency or Special Education Programs.

<u>COUNTY NAME</u>	<u>DISTRICT NAME</u>	<u>SCHOOL NAME</u>	<u>CDS CODE</u>	<u>GRADES PAN</u>	<u>ECONOMICALLY DISADVANTAGED</u>	<u>ENGLISH LANGUAGE LEARNERS</u>	<u>SPECIAL EDUCATION</u>
BERGEN	ALLENDALE BORO	HILLSIDE ELEMENTARY SCHOOL	03-0040-020	PK-03	0.6%	1.1%	6.9%
BERGEN	PARAMUS BORO	MEMORIAL ELEMENTARY SCHOOL	03-3930-080	KG-04	5%	7.6%	12.4%
BERGEN	PARAMUS BORO	STONY LANE ELEMENTARY SCHOOL	03-3930-130	KG-04	2.6%	4.2%	17.6%
BERGEN	RIDGEWOOD VILLAGE	WILLARD ELEMENTARY SCHOOL	03-4390-130	KG-05	1%	1.4%	12.9%
BERGEN	SADDLE RIVER BORO	WANDELL SCHOOL	03-4620-050	PK-05	0%	0%	15.6%
BERGEN	UPPER SADDLE RIVER BORO	EDITH A. BOGERT ELEMENTARY SCHOOL	03-5330-060	03-05	0%	0.2%	20.3%
BERGEN	WOODCLIFF LAKE BORO	DORCHESTER ELEMENTARY SCHOOL	03-5880-030	PK-05	0.6%	0.6%	14.4%
BERGEN	WYCKOFF TWP	SICOMAC ELEMENTARY SCHOOL	03-5920-050	PK-05	0%	0%	20.7%
CAMDEN	HADDONFIELD BORO	ELIZABETH HADDON SCHOOL	07-1900-080	PK-05	0.3%	0%	13.8%
CAPE MAY	STONE HARBOR BORO	STONE HARBOR ELEMENTARY SCHOOL	09-5060-050	KG-04	0%	0%	7.4%
ESSEX	GLEN RIDGE BORO	RIDGEWOOD AVENUE SCHOOL	13-1750-075	03-06	0.2%	0%	17.3%
ESSEX	LIVINGSTON TWP	HILLSIDE ELEMENTARY SCHOOL	13-2730-100	KG-05	3%	4.2%	11.8%
ESSEX	LIVINGSTON TWP	MOUNT PLEASANT ELEMENTARY SCHOOL	13-2730-110	KG-05	0.9%	2%	8%
ESSEX	MILLBURN TWP	HARTSHORN SCHOOL	13-3190-080	KG-05	0%	0.6%	8.4%
ESSEX	NORTH CALDWELL BORO	GOULD/MOUNTAIN ELEMENTARY SCHOOL	13-3630-050	04-06	0%	0%	19.8%
ESSEX	NORTH CALDWELL BORO	GRANDVIEW ELEMENTARY SCHOOL	13-3630-060	PK-03	0%	0%	8%
ESSEX	VERONA BORO	FOREST AVENUE SCHOOL	13-5370-090	KG-04	0%	0%	14.6%
ESSEX	VERONA BORO	LANING AVENUE SCHOOL	13-5370-100	PK-04	0.4%	0%	12.1%
MERCER	W WINDSOR-PLAINSBORO REG	DUTCH NECK ELEMENTARY SCHOOL	21-5715-030	KG-03	2.1%	4%	5.2%
MONMOUTH	FAIR HAVEN BORO	VIOLA L SICKLES SCHOOL	25-1440-060	PK-03	0%	0%	9.3%
MONMOUTH	ROOSEVELT BORO	ROOSEVELT PUBLIC SCHOOL	25-4520-050	PK-06	0%	0%	11.4%
MONMOUTH	RUMSON BORO	DEANE-PORTER ELEMENTARY SCHOOL	25-4570-040	PK-03	0%	0.2%	10.7%



State of New Jersey
2014-15

39-5730-160

SCHOOL PEER GROUP

WILSON ELEMENTARY SCHOOL
301 LINDEN AVE
WESTFIELD, NJ 07090-1923

UNION
WESTFIELD TOWN

GRADE SPAN 01-05

MORRIS	LONG HILL TWP	MILLINGTON ELEMENTARY SCHOOL	27-4000-060	02-05	3%	4.2%	22.9%
MORRIS	MENDHAM TWP	MENDHAM TOWNSHIP ELEMENTARY SCHOOL	27-3100-050	PK-04	0%	0.3%	14.8%
MORRIS	MOUNTAIN LAKES BORO	WILDWOOD ELEMENTARY SCHOOL	27-3460-080	KG-05	0%	0%	13.9%
MORRIS	RANDOLPH TWP	SHONGUM SCHOOL	27-4330-080	KG-05	0.8%	0.6%	13.5%
PASSAIC	WAYNE TWP	PINES LAKE ELEMENTARY SCHOOL	31-5570-120	KG-05	6%	9%	21%
SOMERSET	WARREN TWP	CENTRAL SCHOOL	35-5470-030	KG-05	2.2%	3.2%	10.5%
UNION	WESTFIELD TOWN	FRANKLIN ELEMENTARY SCHOOL	39-5730-100	01-05	0.2%	0.5%	14.8%
UNION	WESTFIELD TOWN	JEFFERSON ELEMENTARY SCHOOL	39-5730-120	01-05	0.4%	0.2%	11.8%
UNION	WESTFIELD TOWN	WILSON ELEMENTARY SCHOOL	39-5730-160	01-05	0.3%	0%	22.1%