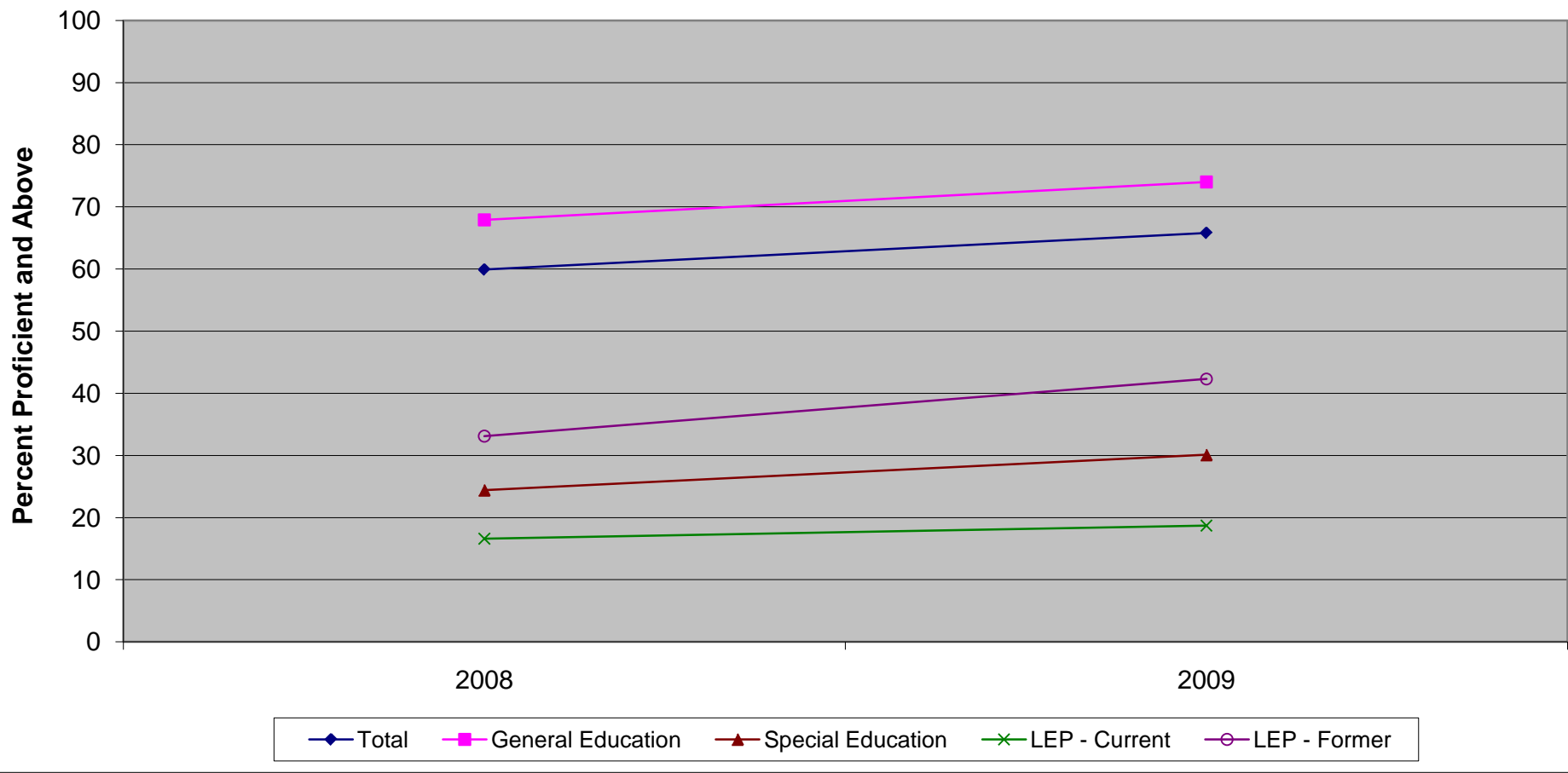


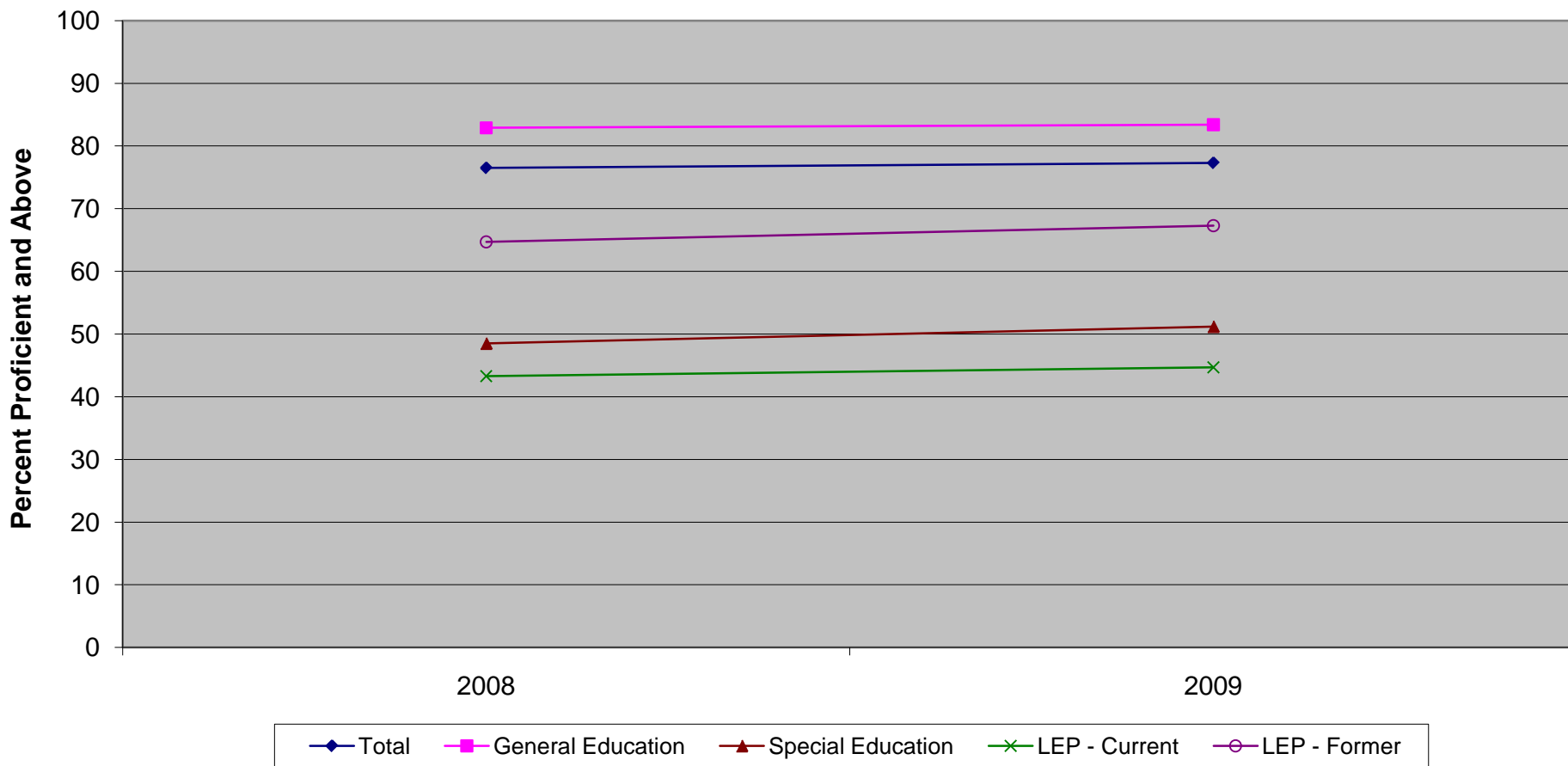
**New Jersey Assessment of Skills and Knowledge
Grade 5 Language Arts Literacy Percent Proficient and Above by Instructional Group (2008 - 2009)**



**New Jersey Assessment of Skills and Knowledge
Grade 5 Language Arts Literacy Percent Proficient and Above by Instructional Group (2008 - 2009)**

	2008	2009
Total	59.9	65.8
General Education	67.9	74.0
Special Education	24.4	30.1
LEP - Current	16.6	18.7
LEP - Former	33.1	42.3

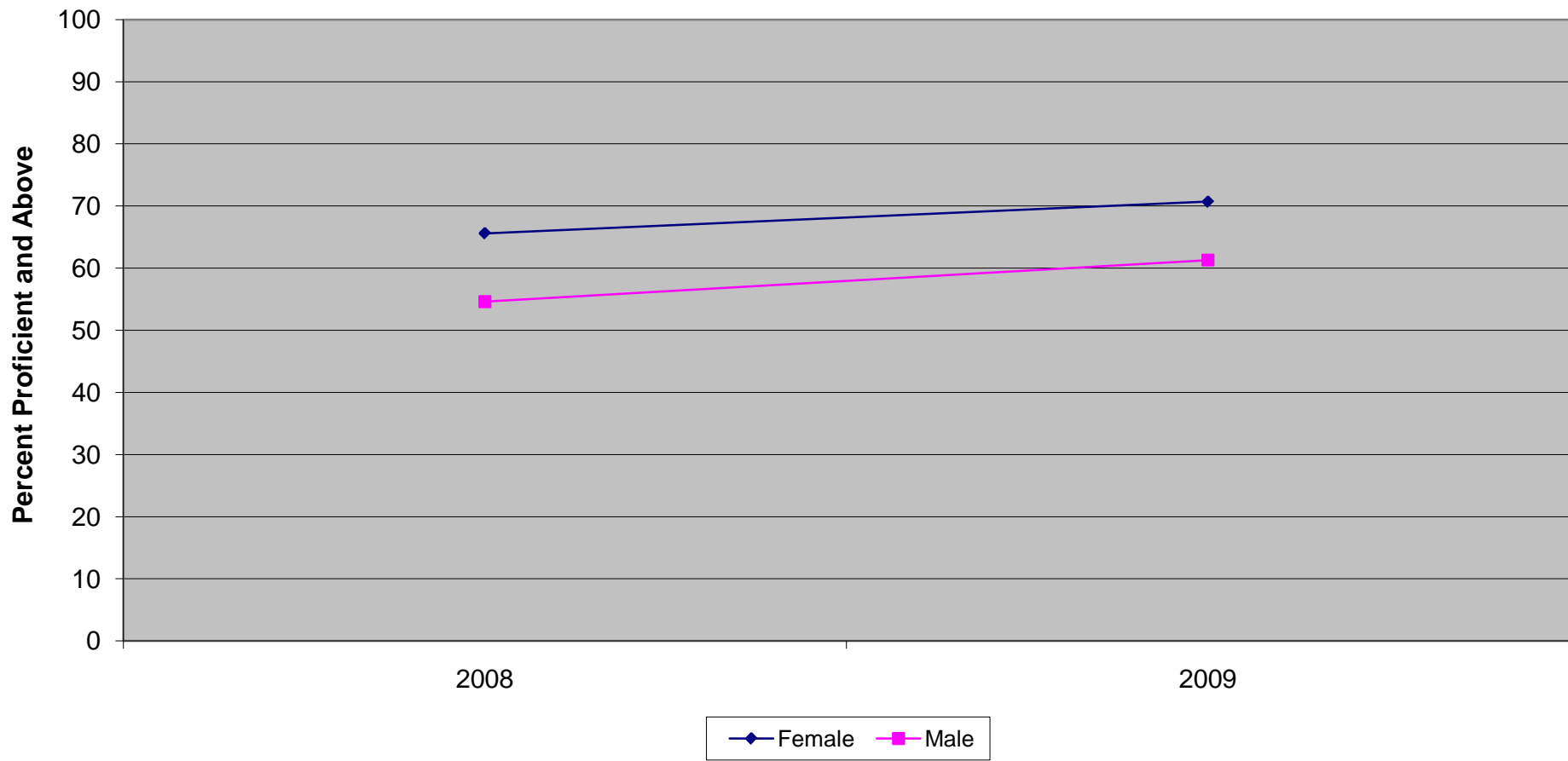
New Jersey Assessment of Skills and Knowledge
Grade 5 Mathematics Proficient and Above by Instructional Group (2008 - 2009)



New Jersey Assessment of Skills and Knowledge
Grade 5 Mathematics Proficient and Above by Instructional Group (2008 - 2009)

	2008	2009
Total	76.5	77.3
General Education	82.9	83.4
Special Education	48.5	51.2
LEP - Current	43.3	44.7
LEP - Former	64.7	67.3

**New Jersey Assessment of Skills and Knowledge
Grade 5 Language Arts Literacy Proficient and Above by Gender (2008 - 2009)**

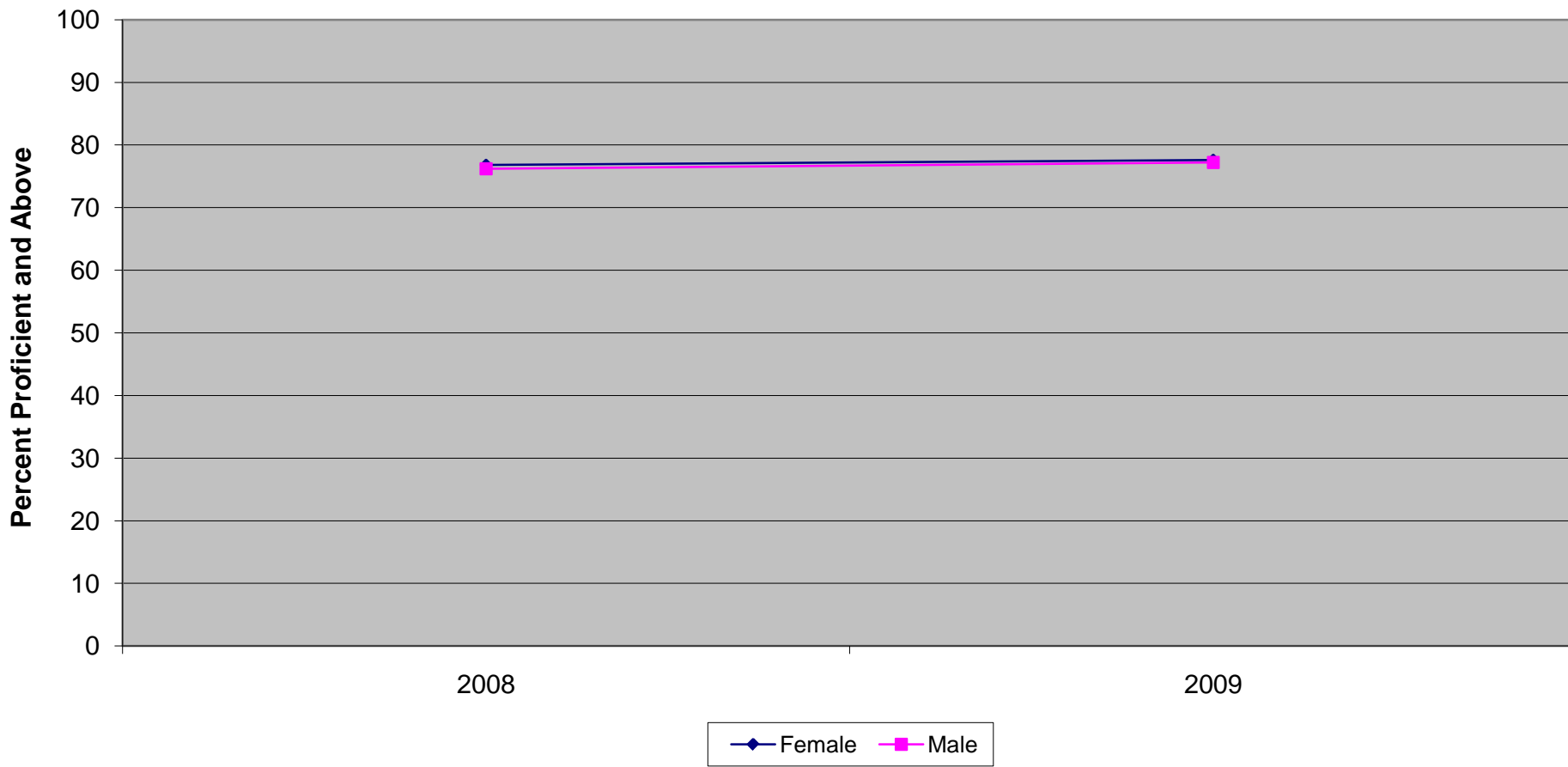


New Jersey Assessment of Skills and Knowledge

Grade 5 Language Arts Literacy Proficient and Above by Gender (2008 - 2009)

	2008	2009
Female	65.6	70.7
Male	54.6	61.3

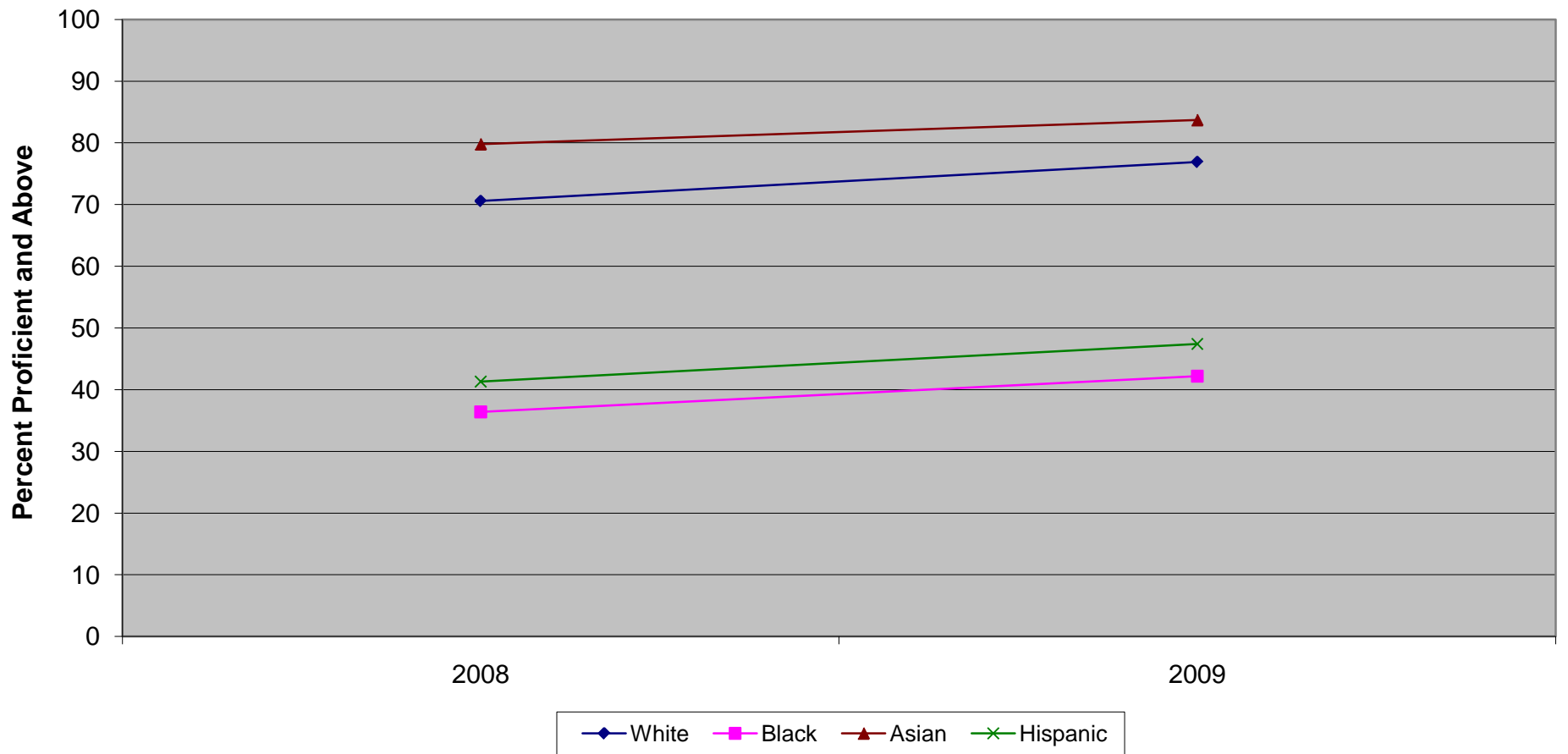
**New Jersey Assessment of Skills and Knowledge
Grade 5 Mathematics Proficient and Above by Gender (2008 - 2009)**



**New Jersey Assessment of Skills and Knowledge
Grade 5 Mathematics Proficient and Above by Gender (2008 - 2009)**

	2008	2009
Female	76.8	77.6
Male	76.2	77.2

New Jersey Assessment of Skills and Knowledge
Grade 5 Language Arts Literacy Proficient and Above by Ethnicity (2008 - 2009)



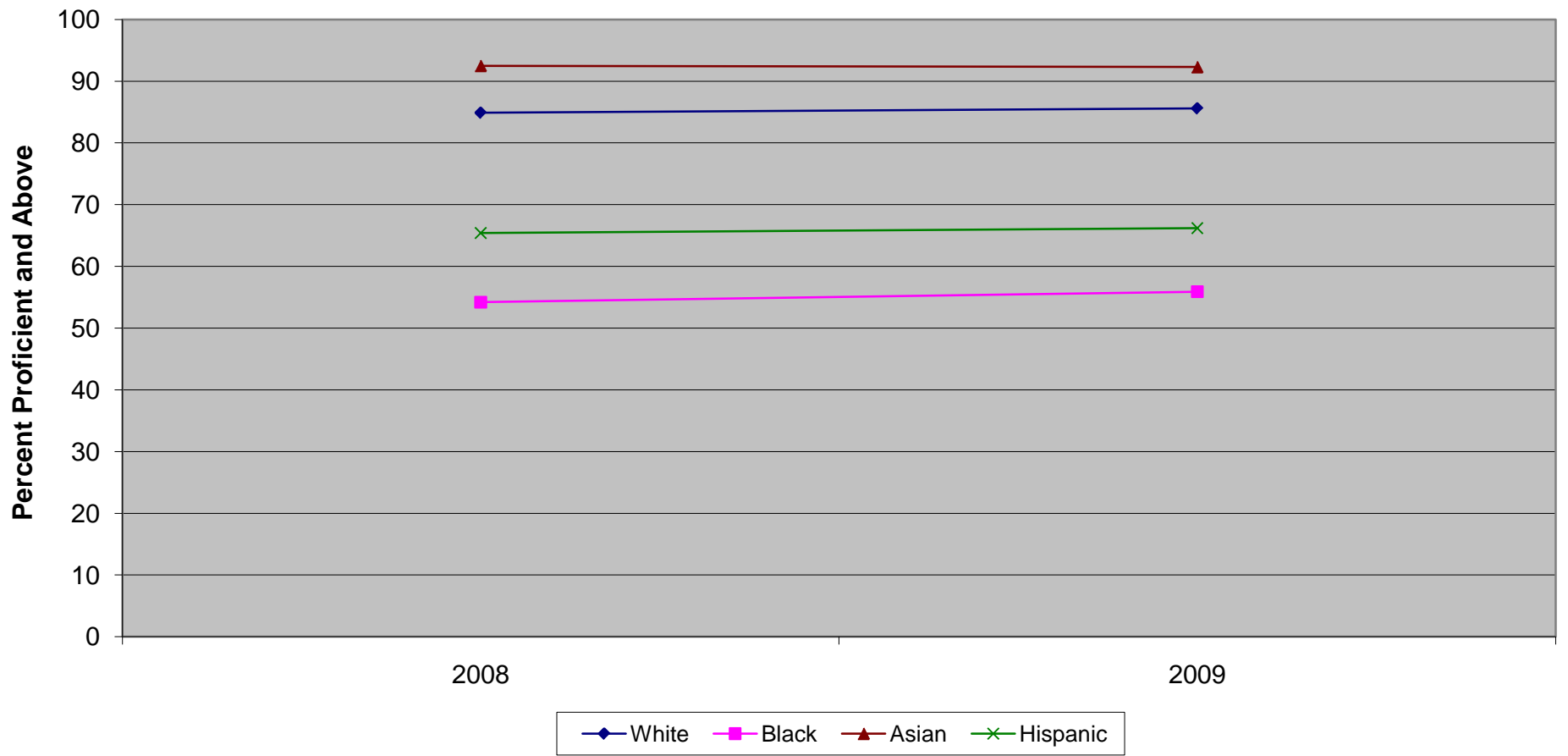
Ethnic codes Pacific Islander, American Indian/Alaskan Native and Other are not shown due to the small number of students in these categories.

**New Jersey Assessment of Skills and Knowledge
Grade 5 Language Arts Literacy Proficient and Above by Ethnicity (2008 - 2009)**

	2008	2009
White	70.6	76.9
Black	36.4	42.2
Asian	79.8	83.7
Hispanic	41.3	47.4

|

New Jersey Assessment of Skills and Knowledge
Grade 5 Mathematics Proficient and Above by Ethnicity (2008 - 2009)



Ethnic codes Pacific Islander, American Indian/Alaskan Native and Other are not shown due to the small number of students in these categories.

**New Jersey Assessment of Skills and Knowledge
Grade 5 Mathematics Proficient and Above by Ethnicity (2008 - 2009)**

	2008	2009
White	84.9	85.6
Black	54.2	55.9
Asian	92.5	92.3
Hispanic	65.4	66.2

|