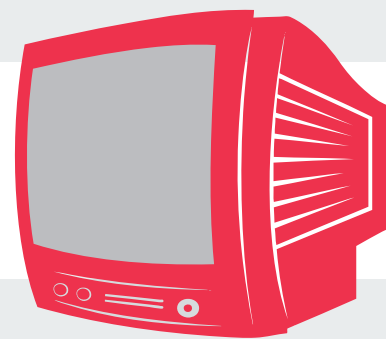
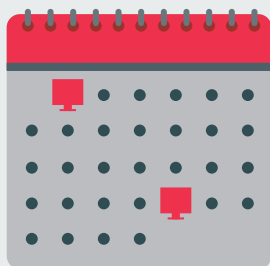


TV Tip-Overs

How kids are getting hurt and what to do about it.



Every 3 weeks a child dies from a television tip-over.*



Every hour, a child goes to the ER because of a TV tip-over.



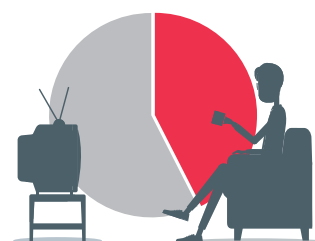
7 out of 10 kids injured by TV tip-overs are ages 5 and under.



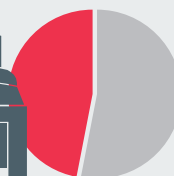
A 36" heavier, box-style CRT TV falling three feet creates the same momentum as a 1-year-old child falling 10 stories.



34% of households still have a CRT in the home.



34% of child fatalities from 2000-2013 due to TV tip-overs involved someone climbing on the furniture or TV.



From 2000-2013, 47% of child fatalities due to TV tip-overs occurred in a bedroom.

Safety Tips



Properly place your old TV. If you have a heavier, box-style TV, place it on a **low, stable piece of furniture** that is appropriate for the TV's size and weight.



Secure your flat-panel TV. Be sure your flat-panel TV is properly secured with a **wall mount that has a safety certification** by an independent laboratory (such as UL, CSA, ETL).



Recycle your TV. To find a location near your home that **safely and responsibly recycles** unwanted TVs, go to www.GreenerGadgets.org.

* Based on estimates from CPSC NEISS data for 2000-2013.