

Stay Alert

Drive Safely

RESOURCES

New Jersey Department of Health:

- ◆ Resources for workers regarding trash/recycling trucks: https://www.nj.gov/health/workplacehealthandsafety/occupational-health-surveillance/workers/solidwaste_recycle.shtml

National Institute for Occupational Safety and Health (NIOSH):

- ◆ Solid Waste Industry Fact Sheet: <http://www.cdc.gov/niosh/docs/2012-140/pdfs/2012-140.pdf>
- ◆ Preventing Worker Injuries and Deaths From Moving Refuse Collection Vehicle: <http://www.cdc.gov/niosh/docs/97-110/>

Occupational Safety and Health Administration (OSHA):

- ◆ Crushing Hazards Associated with Dumpsters and Rear-Loading Trash Trucks: <http://www.osha.gov/dts/shib/shib120903.html>

Massachusetts Fatality Assessment and Control Evaluation (FACE) Project -- *FACE Facts* Safety Alert: City Laborer Dies after Falling Off a Moving Refuse Collection Truck: <http://www.mass.gov/eohhs/docs/dph/occupational-health/refuse-truck.pdf>

American National Standards Institute (ANSI):

- ◆ ANSI Z245.1-2008: Mobile Wastes and Recyclable Materials Collection, Transportation and Compaction Equipment - Safety Requirements: <http://webstore.ansi.org/>
- ◆ ANSI/ISEA 207-2011: American National Standard for High-Visibility Public Safety Vests: <http://webstore.ansi.org/>

New Jersey Department of Labor and Workforce Development:

- ◆ Office of Public Employees Occupational Safety and Health: http://lwd.dol.state.nj.us/labor/lsse/employer/Public_Employees_OSH.html

National Solid Wastes Management Association (NSWMA): <http://www.environmentalistseveryday.org/about-nswma-solid-waste-management/index.php>

New Jersey Chapter of the Solid Waste Association of North America (SWANA): <http://swanachapters.org/newjersey/Home.aspx>

Waste Equipment Technology Association (WASTEC): <http://www.environmentalistseveryday.org/about-wastec-solid-waste-equipment-technology/index.php>

New Jersey Department of Environmental Protection -- Solid and Hazardous Waste Management Program: <http://www.state.nj.us/dep/dshw/>

For more information, please contact:

New Jersey Department of Health
Environmental and Occupational Health
Surveillance Program
PO Box 369
Trenton NJ 08625-0369
Phone: (609) 826-4984
E-mail: surveillance@doh.state.nj.us
Fax: (609) 826-4983
Website: www.nj.gov/health/surv

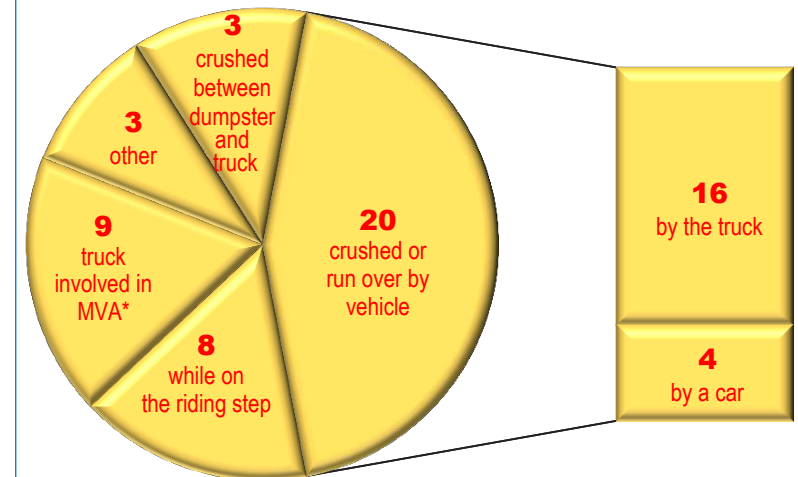


Remember
BE SAFE
You can prevent injuries.

HAZARD ALERT

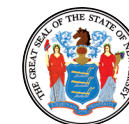
Solid Waste Workers Killed on the Job

From 1992 to 2012, **43** workers were killed while hauling solid waste and recycling materials in New Jersey. Many more were seriously injured.



*MVA=motor vehicle accident

PUBLIC HEALTH SERVICES BRANCH
Consumer, Environmental and Occupational Health Service





How can you avoid getting hurt?



Be seen!

- Always wear a reflective vest or garments (ANSI Class 2 or Class 3*). Wear light or brightly colored clothes.



Stay alert!

- Watch out for cars. Know where the truck is at all times.
- Stay off the truck when it's moving backwards.
- Never stand between a dumpster and the truck!
- Do not use cell phones, iPods, etc., that cause distraction. No texting!

Don't get hurt!

- Wear your safety glasses, gloves, and safety toe work boots.
- Lift heavy loads properly to avoid back injuries. Never grab trash off the curb while riding on the truck.
- Stand to the side of the truck while compacting.
- Never ride on cab step, loading platform/sill, or in the hopper.
- Use the handholds to step on and off the truck. Never jump on the truck while it's moving.
- Hold tight to the handholds and face the vehicle when you're standing on the riding step. Don't hold or carry objects in your hands.
- Ride inside if the truck is going faster than 10mph or for distances greater than 0.2 miles (approx. 1,000 feet or 300 yards) between stops.*
- Take extra care during heat waves. Drink lots of liquids and take time to cool off.

Some of the fatal incidents that happened in New Jersey:

- ➔ A 19-year-old collector was killed when he was hit by a car. He was loading garbage into the truck which was parked half on and half off the road.
- ➔ A 43-year-old collector was killed after falling from a garbage truck. He was riding on the back of the truck which was reported moving at 50 mph.
- ➔ A 30-year-old collector was on the riding step. He was crushed to death when the truck side-swiped a pole.
- ➔ A 28-year-old collector was riding on the back of a sanitation truck. The truck was backing up. He fell and was run over and killed by the truck.
- ➔ A 69-year old driver was helping to load trash when the vehicle began to move forward, uncontrolled. As the worker chased the runaway truck, he fell under one of the wheels and was crushed to death.

How can you avoid hurting yourself or a fellow worker?



Get ready!

- Be sure all lights and back-up alarms are working.
- Buckle up.

Don't forget the collectors!

- Always know where your collectors are; do not operate or move the truck if you don't.
- Signal all collectors first before backing up the truck. Use a second person as a spotter when possible.
- Avoid sudden stops that could cause your collectors to be thrown from the vehicle.
- Have workers ride inside if you're driving more than 10 mph or for distances greater than 0.2 miles (approx. 1,000 feet or 300 yards) between stops.*

Drive safely!

- Always come to a full stop for collection pick-up.
- Always put the truck in park before you get out of the cab. Use the emergency brakes if necessary, for example in a hilly area.
- Park in the direction of traffic, on the side of the street where the trash is located.
- Watch out for overhead hazards like power lines, trees, and bridges. Some natural gas-powered trucks are taller.
- Do not use cell phones, iPods, etc., that cause distraction. No texting!



*American National Standards Institute; see Resources on back page.