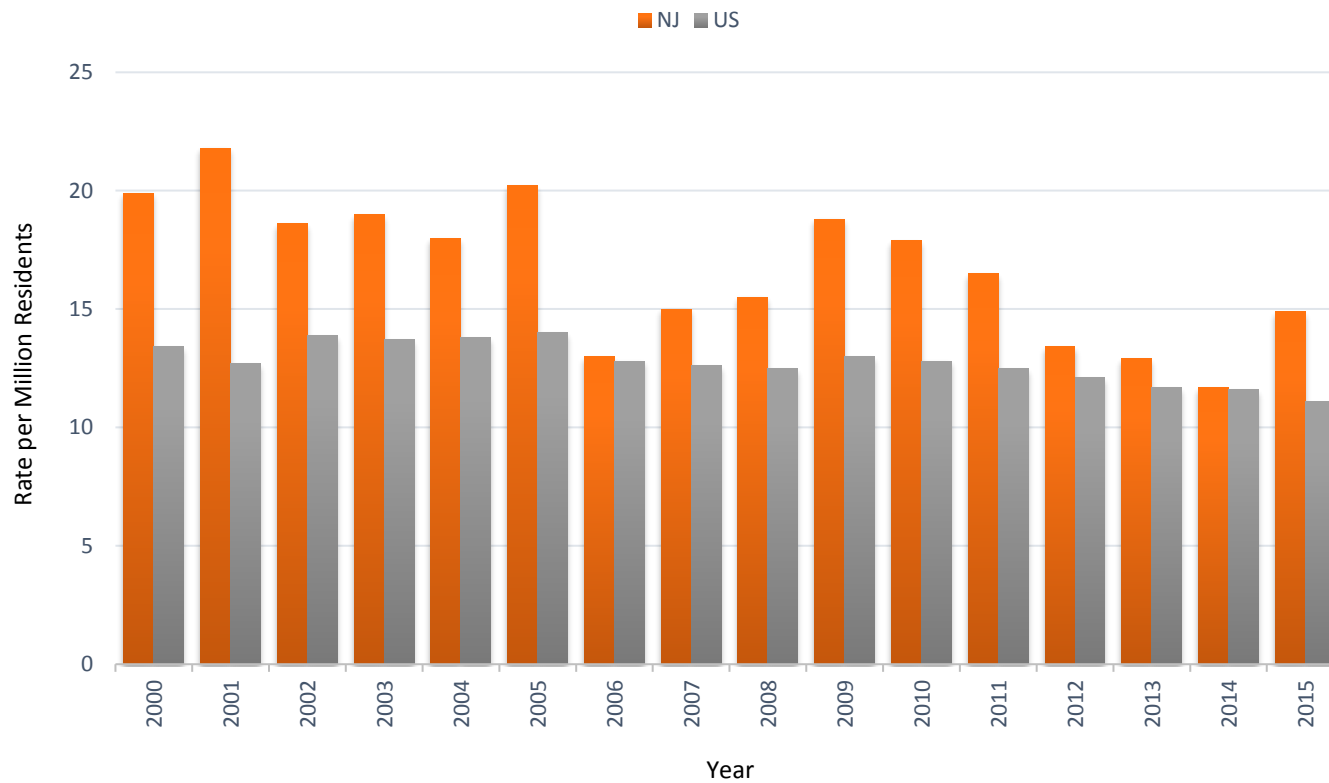


OHI #12: Incidence of Malignant Mesothelioma

Annual, Age-Standardized, Mesothelioma Incidence Rate*,
New Jersey and United States, 2000-2015



*Cases per million residents, age 15 years or older

**Annual Number and Age-Standardized
Mesothelioma Incidence Rate*, New Jersey
and United States, 2000-2015**

Year	Number		Rate*	
	NJ	US	NJ	US
2000	138	N/A	19.9	13.4
2001	151	N/A	21.8	12.7
2002	129	2,683	18.6	13.9
2003	137	2,689	19.0	13.7
2004	129	2,759	18.0	13.8
2005	146	2,691	20.2	14.0
2006	125	2,637	13.0	12.8
2007	129	2,872	15.0	12.6
2008	146	3,003	15.5	12.5
2009	141	2,921	18.8	13.0
2010	137	3,126	17.9	12.8
2011	131	3,175	16.5	12.5
2012	109	3,141	13.4	12.1
2013	106	3,114	12.9	11.7
2014	97	3,127	11.7	11.6
2015	128	3,098	14.9	11.1

* Cases per million residents, age 15 years or older

N/A: not available

Data Source: New Jersey Cancer Registry; US Census Bureau, American Fact Finder
 [<https://factfinder.census.gov/faces/nav/jsf/pages/index.xhtml>]; 2000 Standard Population
 [<https://www.cdc.gov/nchs/data/statnt/statnt20.pdf>]