

State of New Jersey



NJ DEPARTMENT OF HUMAN SERVICES

DIVISION OF DEVELOPMENTAL DISABILITIES

Division Update for Individuals, Families, and Providers

November 17, 2021



Agenda

- COVID-19 Statistics
- December Webinar
- Support Coordination Rate Increase
- Projected January 1, 2022 Rate Increase
- Change to Temporary Residential Funding Enhancement
- Change to Day Program State Supplemental Funding
- Support Coordinator Actions
- Fight the Flu!
- Resources



New Jersey COVID-19 Current Statistics*

State of New Jersey	
Positive	1,059,828
Deaths	25,358

**This update is as of Tuesday, November 16, 2021.*

For regular updates: <https://covid19.nj.gov/>

Consider downloading COVID Alert NJ on your Apple or Android smartphone: <https://covid19.nj.gov/pages/app>

DDD Specific COVID-19 Statistics*



	Community		Developmental Centers	Total
	Licensed	Own Home		
Positive	2,011	747	706	3,464
Deaths	118	66	42	226

DDD-specific statistics are updated weekly. Community data includes individuals **actively under DDD services in settings such as group homes, supervised apartments, out of state, and own-home settings.*

Full detail, including data for individuals not under services for whom reporting is voluntary and provided for informational purposes only, can be found at [NJ Department of Human Services COVID-19 Information](#).

COVID-19 Update Webinar Schedule

- December Update webinar:
 - Thursday December 16, 2021 – 10:30 am
- [Register for the December Webinar](#)



Support Coordination Rate Increase

- The Department of Human Services and Division are pleased to announce that the Support Coordination Rate has been increased.
- The original rate was \$239.81 per month.
- **The new rate is \$362.89 per month.**
- *This is an increase of \$123.08 per month.*



Support Coordination Rate Increase

- This increase is effective November 1, 2021 and will be reflected in claims for services rendered on/after that date.
- This funding is made possible through increased FMAP funding through the American Rescue Plan.
- Funding is in place through March 2024.



Projected January 1, 2022 Rate Increase

- The next rate increase is the DSP and Supervisor Wage Increase and is scheduled for January 1, 2022.
- This will provide about \$1.25 per hour increase to DSPs and DSP Supervisors.
- Impacted services will be:
 - Career Planning, Community Inclusion, Community Based Supports, Day Habilitation, Individual Supports, Pre-Vocational Training, Respite and Supported Employment.
- Please review [Frequently Asked Questions](#) for more information.

Change to Temporary Residential Funding Enhancement

- Effective January 1, 2022 and as announced earlier this year, the 20% enhancement to Individual Supports Daily Rate claims will expire.
- This enhancement was provided as a result of the mandated closure of congregate day programs, requiring congregate residential providers to allocate additional staffing during the hours when residents would have been attending them.
- The mandated closure of congregate day programs was lifted in June 2021.



Change to Temporary Residential Funding Enhancement

- As a result of this change, congregate residential providers serving individuals who do not have prior authorized day services in their ISP that can meet their day services needs January 1, 2022 forward are directed to contact residents' Support Coordinators as soon as practicable.
- Support Coordinators are directed to hold planning team meetings, as applicable, to add services if they do not exist already.
- Please see [Temporary Day and Residential Funding for detail.](#)



Change to Day Program State Supplemental Funding

- Effective January 1, 2022, State Supplemental Payments will continue, but be reduced from 50% to 25% of the baseline payment.
 - Please note that the baseline payment represents an agency's highest month of billing between July and December 2019.
- The initial State Supplemental Payment was provided to maintain our critical day program workforce due to mandated closure of congregate day programs that were lifted in June 2021.
- The new payment will continue to be adjusted based on actual claims.



Change to Day Program State Supplemental Funding

- Payments will continue through June 30, 2022 and cease in their entirety on July 1, 2022.
- The Division will monitor its overall budget spending and if it becomes clear that the 25% is not available due to increased spending in individual budgets this payment may end sooner. Should this occur, the Division will provide 30 days-notice.
- **Please note that increased day service rates that went into effect October 1, 2021 are **not** impacted.**
- Please see [Temporary Day and Residential Funding for detail](#).

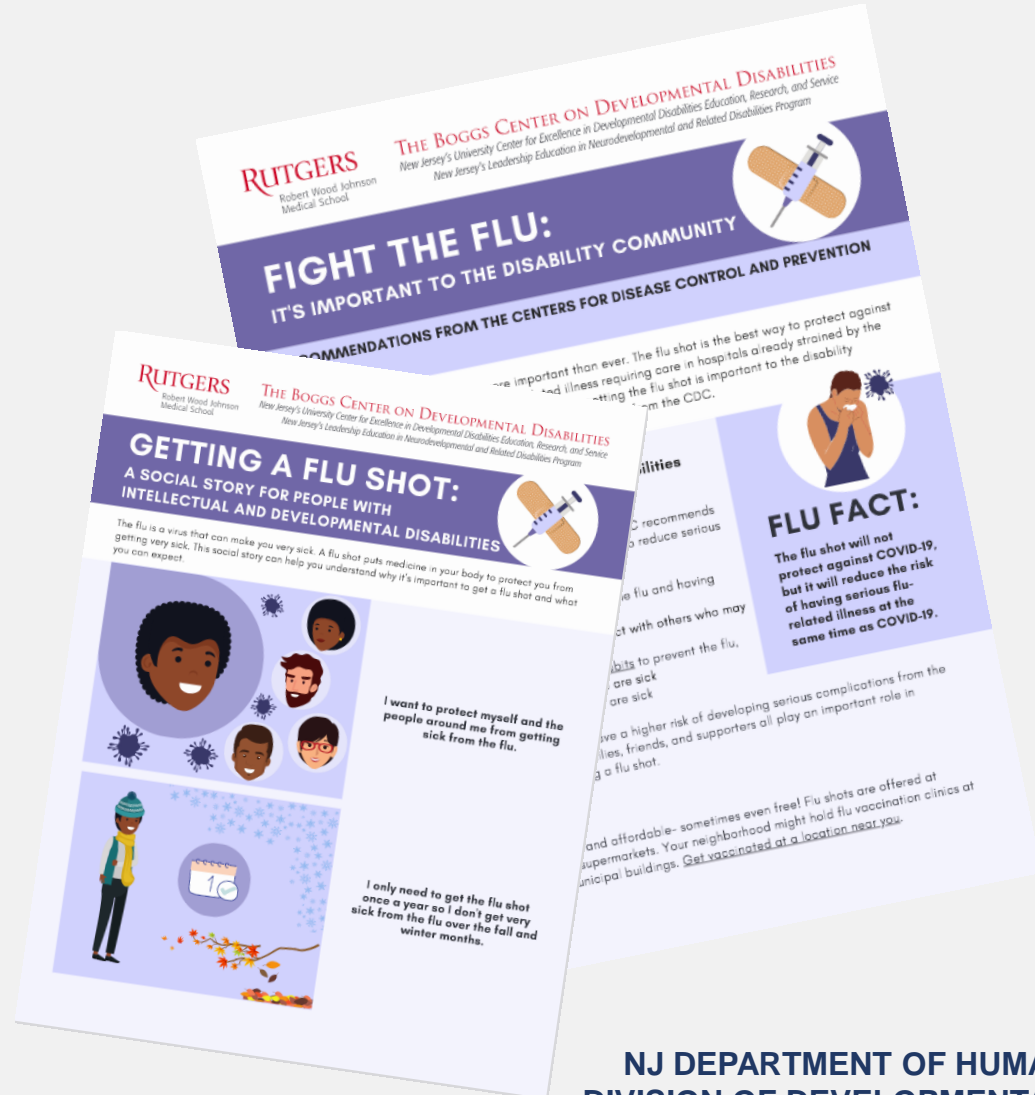


Support Coordinator Actions Due to Payment Changes

- Individuals will continue to need prior authorizations to receive services.
- If a Support Coordinator serves an individual who does not have prior authorized day services in which they can engage after January 1, 2022, they are directed to engage the individual, their guardian and planning team to identify services.
- Services can be self-directed or provider managed.
- Please see the **updated** [Temporary Service Modifications](#) for current policies on service provision.



Fight the Flu



Fight the Flu Fact Sheet & Social Story

Available on
The Boggs Center's [Fight
the Flu](#) website.

Important Resources

- [Disability Rights New Jersey](#)
 - 1-800-922-7233 (toll-free in New Jersey only)
- [Ombudsman for Individuals with Developmental Disabilities and their Families](#)
 - 1-609-984-7764
- [New Jersey Council on Developmental Disabilities](#)
 - 1-800-792-8858

Important Resources

- For assistance during this time:
 - For issues, call the Division Community Services office for your county or 1 (800) 832-9173.
 - When calling, you will be connected with the Division's answering service who will take information about the circumstance and have a Division staff person reach out.
 - For routine questions: DDD.FeeForService@dhs.nj.gov
 - For COVID-related questions: DDD.COVID-19@dhs.nj.gov
 - To report suspected abuse, neglect or exploitation: call 1 (800) 832-9173, then press 1.

Highlighted Resources

- For individuals, families and caregivers
 - [Boggs Center COVID-19 Information and Resources](#)
 - [COVID-19 Materials for People with Intellectual and Developmental Disabilities and Care Providers](#)
- For individuals:
 - NJ Self-Advocacy Project's [Stay Healthy at Home Webinar Series](#)
- For Direct Support Professionals
 - [National Alliance for Direct Support Professionals \(NADSP\) COVID-19 Toolkit for DSPs](#)
 - [CDC Guidance for Direct Service Providers](#)

