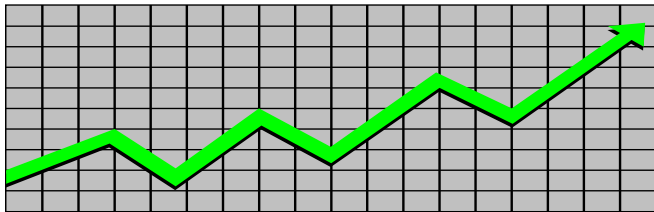


State of New Jersey
Department of Human Services
Division of Family Development

CURRENT PROGRAM STATISTICS



April 2023

Natasha Johnson, Assistant Commissioner

TABLE OF CONTENTS

HIGHLIGHTS:

WFNJ/TANF	ii
NJ SNAP	ii
EMERGENCY ASSISTANCE	ii
GENERAL ASSISTANCE	iii
GA Emergency Assistance.....	iii
GA Program.....	iii
CHILD SUPPORT SERVICES	iii
WORK FIRST NEW JERSEY (WFNJ)	iii
STATISTICS- BY STATE & COUNTY	1
Table 1: WFNJ/TANF Families & Persons (NJ Statewide) April 2021 to 2023.....	1
Table 2: WFNJ/TANF Families (by County)- April 2023.....	2
Table 2B: WFNJ/TANF Persons, Adults, & Children (by County)- April 2023.....	3
Table 3: TANF Work Participation Rates Over 12 Month Period (by County)- April 2023.....	4
Table 4: TANF Work Participation Rates Over 12 Month Period (NJ Statewide)- April 2023.....	5
Table 5: NJ SNAP Households/Persons (NJ Statewide) April 2021 to 2023.....	6
Table 6: NJ SNAP Recipient Trends (NJ Statewide) April 2021 to 2023.....	7
Table 7: NJ SNAP Households/Persons (by County)- April 2023.....	8
Table 8: Emergency Assistance Program (NJ Statewide) April 2021 to 2023.....	9
Table 9: Emergency Assistance Program (by County)- April 2023.....	10
Table 10: General Assistance Program (NJ Statewide) April 2021 to 2023.....	11
Table 11: General Assistance Program (by County)- April 2023.....	12
Table 12: Child Support Services Distributions (NJ Statewide) FFY 2023.....	13
Table 14: Child Support Services Cases With Orders- April 2023.....	14
Table 15: Child Support Services Collections On Current Support- April 2023.....	15
Table 16: Child Support Services Cases With Payments On Arrears- April 2023.....	16
Table 17: WFNJ Statistical Summary- April 2023.....	17
ACRONYMS	18
EXPLANATORY NOTES	19
WFNJ Statistical Summary (Table 17).....	19

DIVISION OF FAMILY DEVELOPMENT CURRENT PROGRAM STATISTICS
APRIL 2023

Each month the Division of Family Development publishes its program statistics for: WFNJ/TANF, NJ SNAP, Emergency Assistance, General Assistance, and Child Support Services. When possible, information is provided separately for children and adults. Many tables also provide trend data with information broken down by county for readers to consider. This report is compiled and prepared by The Bureau of Research & Reporting.

WFNJ/TANF

- As of the end of April, the TANF caseload had increased by 619 cases, from 10,458 in April 2022 to 11,077 in April 2023; an increase of 5.9%.
- The counties with caseloads that increased the most since April 2022 were Bergen (49.8%), Essex (23.6%), and Union (21.4%).
- The counties with caseloads that decreased the most since April 2022 were Hunterdon (-16.4%), Passaic (-14.3%), and Warren (-10%).
- Of the WFNJ/TANF cases, 2,548 or 23% were child-only in April 2023.
- The counties with the most child-only cases were Camden (444), Hudson (319), and Essex (259).
- Hudson (4,708), Essex (4,195), and Camden (3,977) counties had the greatest number of persons receiving TANF in April 2023.

NJ SNAP (Formerly FOOD STAMPS)

- In April 2023, there were 420,615 households receiving NJ SNAP benefits. The number of NJ SNAP households decreased by 29,750 or -6.6%, since April 2022.
- There were 831,049 persons receiving NJ SNAP benefits as of April 2023; a decrease of 35,332 or -4.1% since April 2022.
- The counties having the highest SNAP caseload increase since April 2022 were Warren (10%), Ocean (9.4%), and Hunterdon (8.4%).
- The counties having the highest SNAP caseload decrease since April 2022 were Hudson (-18.3%), Passaic (-14.7%), and Atlantic (-12.8%).

EMERGENCY ASSISTANCE

- There were 1,206 TANF families receiving Emergency Assistance (EA) in April 2023; a decrease of 76 or -5.9% since April 2022.
- In April 2023, EA payments were made for 512 SSI recipients.

**DIVISION OF FAMILY DEVELOPMENT CURRENT PROGRAM STATISTICS
APRIL 2023**

- There were 1,781 GA cases with Emergency Assistance payments in April 2023; a decrease of 157 or -8.1% since April 2022.
- The counties that showed the highest percent increase in Emergency Assistance payments were Salem (400%), Somerset (65.3%), and Atlantic (28.2%).
- The counties that showed the highest percent decrease in Emergency Assistance payments were Sussex (-81.8%), Gloucester (-60%), and Warren (-54.8%).

GENERAL ASSISTANCE

- The total numbers of cases receiving GA has decreased from 15,633 to 10,142 since April 2022; a decrease of -35.1%.
- There were 6,569 Employable GA and 3,573 Unemployable GA cases in April 2023.
- The counties that showed the highest percent decrease for GA cases since April 2022 were Passaic (-57%), Hudson (-52.7%), and Burlington (-48.5%).
- In April 2023, GA cases showed a -0.2% decrease since March 2023.

CHILD SUPPORT SERVICES (QUARTERLY REPORT)

- The total collection for the Child Support Services Program was about \$273 million from January 2023 to March 2023; a decrease of -2.33% over the same period from FFY 2022.
- Total distributions decreased -3% from March 2022.

WORK FIRST NEW JERSEY (WFNJ)

- During the report month of April 2023, there were 517 families in which at least one member was employed and an additional 166 families whose WFNJ assistance cases were closed due to employment - related earnings.
- The three counties with the greatest number of employed active WFNJ recipients were: Hudson (90), Essex (84), and Camden (55).
- There were 226 former TANF cases receiving post-TANF support in the form of child care assistance.

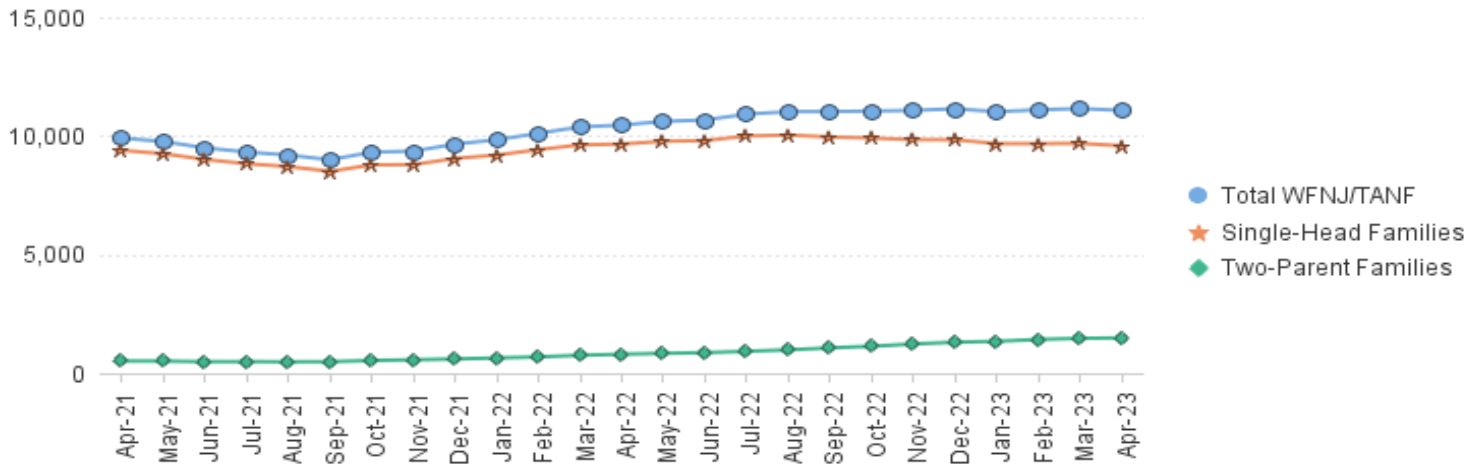
TABLE 1: WFNJ/TANF PROGRAM

STATEWIDE NUMBER OF APPLICATIONS AND TERMINATIONS DURING APRIL 2023
 NUMBER OF ELIGIBLE FAMILIES & PERSONS RECEIVING WFNJ/TANF FOR APRIL 2023

APRIL 2021 THROUGH APRIL 2023

		Cases Added	Cases Closed	Child-Only Cases ‡	Total Single-Head Families	2-Parent Families	Total WFNJ/TANF Families	%CHNG (1 Yr.)	Total Persons	%CHNG (1 Yr.)	Adults	Children
2021	APR	298	704	3,224	9,395	518	9,913	-11.8%	25,276	-12.1%	7,207	18,069
	MAY	264	510	3,209	9,250	513	9,763	-18.0%	24,858	-19.1%	7,067	17,791
	JUN	373	636	3,141	9,008	489	9,497	-21.8%	24,146	-23.0%	6,845	17,301
	JUL	391	590	3,068	8,829	493	9,322	-23.0%	23,785	-23.8%	6,747	17,038
	AUG	415	544	3,029	8,709	482	9,191	-22.4%	23,445	-23.0%	6,644	16,801
	SEP	388	588	2,945	8,507	489	8,996	-22.0%	23,009	-22.1%	6,540	16,469
	OCT	833	564	2,921	8,779	538	9,317	-16.7%	23,888	-16.6%	6,934	16,954
	NOV	656	614	2,816	8,791	568	9,359	-13.6%	24,282	-12.5%	7,111	17,171
DEC	702	432	2,824	9,054	601	9,655	-9.6%	25,177	-8.0%	7,432	17,745	
2021	Average	458	563	3,101	9,151	532	9,683		24,807		7,114	17,693
2022	JAN	667	484	2,796	9,193	645	9,838	-6.4%	25,789	-4.3%	7,687	18,102
	FEB	655	414	2,794	9,424	689	10,113	-2.5%	26,638	0.4%	8,008	18,630
	MAR	715	512	2,804	9,623	756	10,379	0.8%	27,433	4.2%	8,331	19,102
	APR	644	622	2,743	9,656	802	10,458	5.5%	27,749	9.8%	8,517	19,232
	MAY	632	475	2,723	9,777	838	10,615	8.7%	28,183	13.4%	8,730	19,453
	JUN	622	599	2,718	9,802	869	10,671	12.4%	28,287	17.1%	8,822	19,465
	JUL	679	518	2,715	9,998	925	10,923	17.2%	29,043	22.1%	9,133	19,910
	AUG	713	609	2,687	10,037	987	11,024	19.9%	29,453	25.6%	9,324	20,129
	SEP	755	808	2,651	9,959	1,070	11,029	22.6%	29,486	28.1%	9,448	20,038
	OCT	753	821	2,626	9,910	1,139	11,049	18.6%	29,606	23.9%	9,562	20,044
	NOV	801	822	2,573	9,843	1,234	11,077	18.4%	29,858	23.0%	9,738	20,120
	DEC	747	792	2,578	9,837	1,308	11,145	15.4%	30,064	19.4%	9,875	20,189
2022	Average	699	623	2,701	9,755	939	10,693		28,466		8,931	19,535
2023	JAN	669	792	2,560	9,674	1,346	11,020	12.0%	29,683	15.1%	9,806	19,877
	FEB	760	717	2,531	9,676	1,426	11,102	9.8%	30,019	12.7%	9,997	20,022
	MAR	822	864	2,565	9,683	1,470	11,153	7.5%	30,069	9.6%	10,058	20,011
	APR	739	858	2,548	9,587	1,490	11,077	5.9%	29,826	7.5%	10,019	19,807
2023	Average To Date	748	808	2,551	9,655	1,433	11,088		29,899		9,970	19,929

NJ STATEWIDE
 Eligible Families Receiving WFNJ/TANF
 APRIL 2021 THROUGH APRIL 2023



Data is derived from NJ MMIS Shared Data Warehouse Issuance files.
 Effective July 2013 this data query source was converted to the SDW

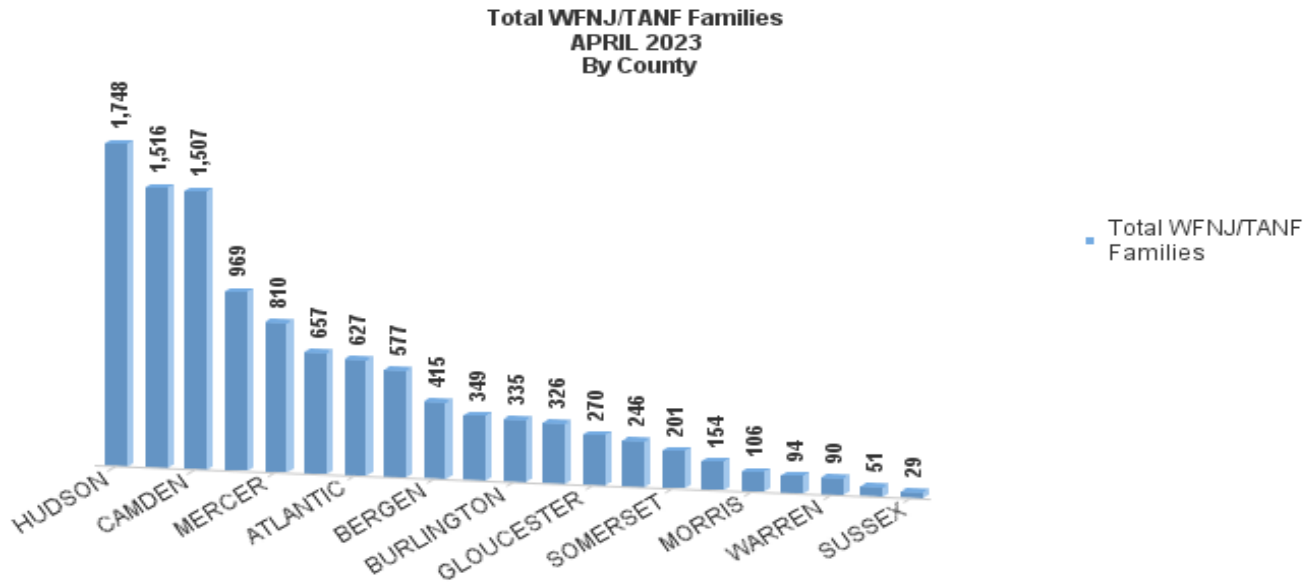
‡ Child-only cases are defined as families in which no eligible adult receives TANF program benefits, yet the family continues to be headed by at least one of the biological parents, or grandparents, or other appropriate adult.

TABLE 2: WFNJ/TANF PROGRAM

NUMBER OF APPLICATIONS AND TERMINATIONS BY COUNTY DURING APRIL 2023

NUMBER OF ELIGIBLE FAMILIES RECEIVING WFNJ/TANF FOR APRIL 2023

County	Cases Added	Cases Closed **	Child-Only Cases ‡	1-Adult Cases	Total Single-Head Families	2-Parent Families	Total WFNJ/TANF Families	%CHNG (3 Mon)	%CHNG (1 Yr.)
ATLANTIC	36	41	189	390	579	48	627	-0.9%	-8.3%
BERGEN	28	37	67	260	327	88	415	-1.2%	49.8% Δ
BURLINGTON	28	27	96	215	311	24	335	2.8%	-5.6%
CAMDEN	73	90	444	934	1,378	129	1,507	0.1%	0.1%
CAPE MAY	9	6	31	55	86	8	94	8.0%	9.3%
CUMBERLAN	23	34	101	186	287	39	326	0.3%	12.0%
ESSEX	131	85	259	889	1,148	368	1,516	3.1%	23.6% Δ
GLOUCESTER	26	16	74	173	247	23	270	2.3%	4.7%
HUDSON	127	164	319	1,185	1,504	244	1,748	1.3%	6.8%
HUNTERDON	4	1	6	37	43	8	51	0.0%	-16.4% *
MERCER	41	67	198	523	721	89	810	1.6%	20.4%
MIDDLESEX	49	32	172	351	523	54	577	3.8%	-3.4%
MONMOUTH	16	18	57	174	231	15	246	2.1%	8.8%
MORRIS	12	8	16	72	88	18	106	1.0%	19.1%
OCEAN	21	31	63	249	312	37	349	-2.5%	2.6%
PASSAIC	40	61	250	655	905	64	969	-6.4%	-14.3% *
SALEM	19	23	37	103	140	14	154	0.7%	4.8%
SOMERSET	15	22	36	148	184	17	201	0.0%	-3.4%
SUSSEX	3	8	8	15	23	6	29	-17.1%	16.0%
UNION	27	74	109	359	468	189	657	-8.6%	21.4% Δ
WARREN	11	13	16	66	82	8	90	-4.3%	-10.0% *
NJ Total	739	858	2,548	7,039	9,587	1,490	11,077	-0.2%	5.9%



Data is derived from NJ MMIS Shared Data Warehouse Issuance files. Effective July 2013 this data query source was converted to the SDW

‡ Child-only cases are defined as families in which no eligible adult receives TANF program benefits, yet the family continues to be headed by at least one of the biological parents, or grandparents, or other appropriate adult

** 'Cases closed' include cases that received a benefit in the prior month, but did not receive any TANF benefit for the report month.

Δ=higher caseload % change

*=lower caseload % change

TABLE 2B: WFNJ/TANF PROGRAM

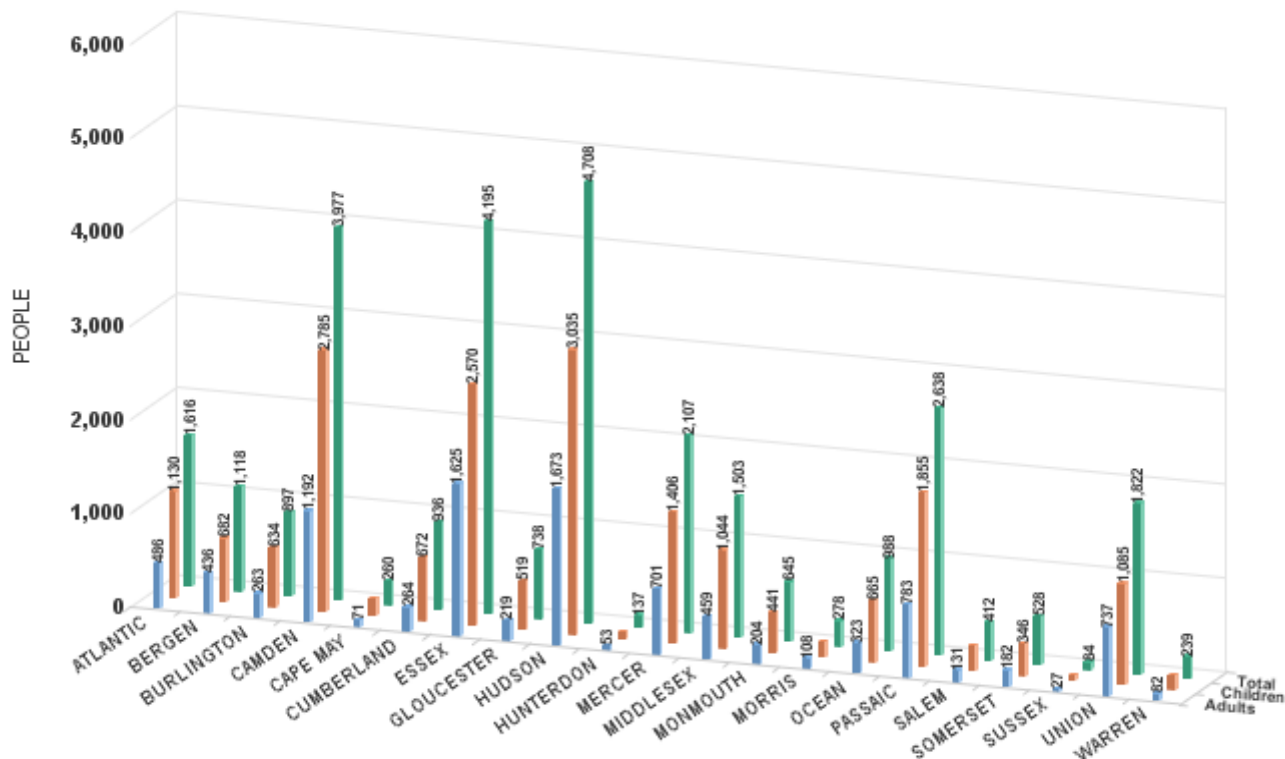
NUMBER OF PARTICIPATING PERSONS, ADULTS, AND CHILDREN
BY COUNTY FOR APRIL 2023

PERSONS

County	Adults	Children	Child/Adult Ratio	Total Persons	% Chng (1 Yr)	Persons Per Case
ATLANTIC	486	1,130	2.33	1,616	-8.6%	2.58
BERGEN	436	682	1.56	1,118	56.8% Δ	2.69
BURLINGTON	263	634	2.41	897	-1.8%	2.68
CAMDEN	1,192	2,785	2.34	3,977	1.5%	2.64
CAPE MAY	71	189	2.66	260	18.2%	2.77
CUMBERLAND	264	672	2.55	936	12.2%	2.87
ESSEX	1,625	2,570	1.58	4,195	27.8% Δ	2.77
GLOUCESTER	219	519	2.37	738	7.3%	2.73
HUDSON	1,673	3,035	1.81	4,708	8.0%	2.69
HUNTERDON	53	84	1.58	137	-20.8% *	2.69
MERCER	701	1,406	2.01	2,107	23.4%	2.60
MIDDLESEX	459	1,044	2.27	1,503	-0.5%	2.60
MONMOUTH	204	441	2.16	645	15.2%	2.62
MORRIS	108	170	1.57	278	23.6%	2.62
OCEAN	323	665	2.06	988	5.1%	2.83
PASSAIC	783	1,855	2.37	2,638	-16.5% *	2.72
SALEM	131	281	2.15	412	0.0%	2.68
SOMERSET	182	346	1.90	528	-6.2%	2.63
SUSSEX	27	57	2.11	84	25.4% Δ	2.90
UNION	737	1,085	1.47	1,822	23.9%	2.77
WARREN	82	157	1.91	239	-8.8% *	2.66
NJ Total	10,019	19,807	1.98	29,826	7.5%	2.69

Δ=higher caseload % change

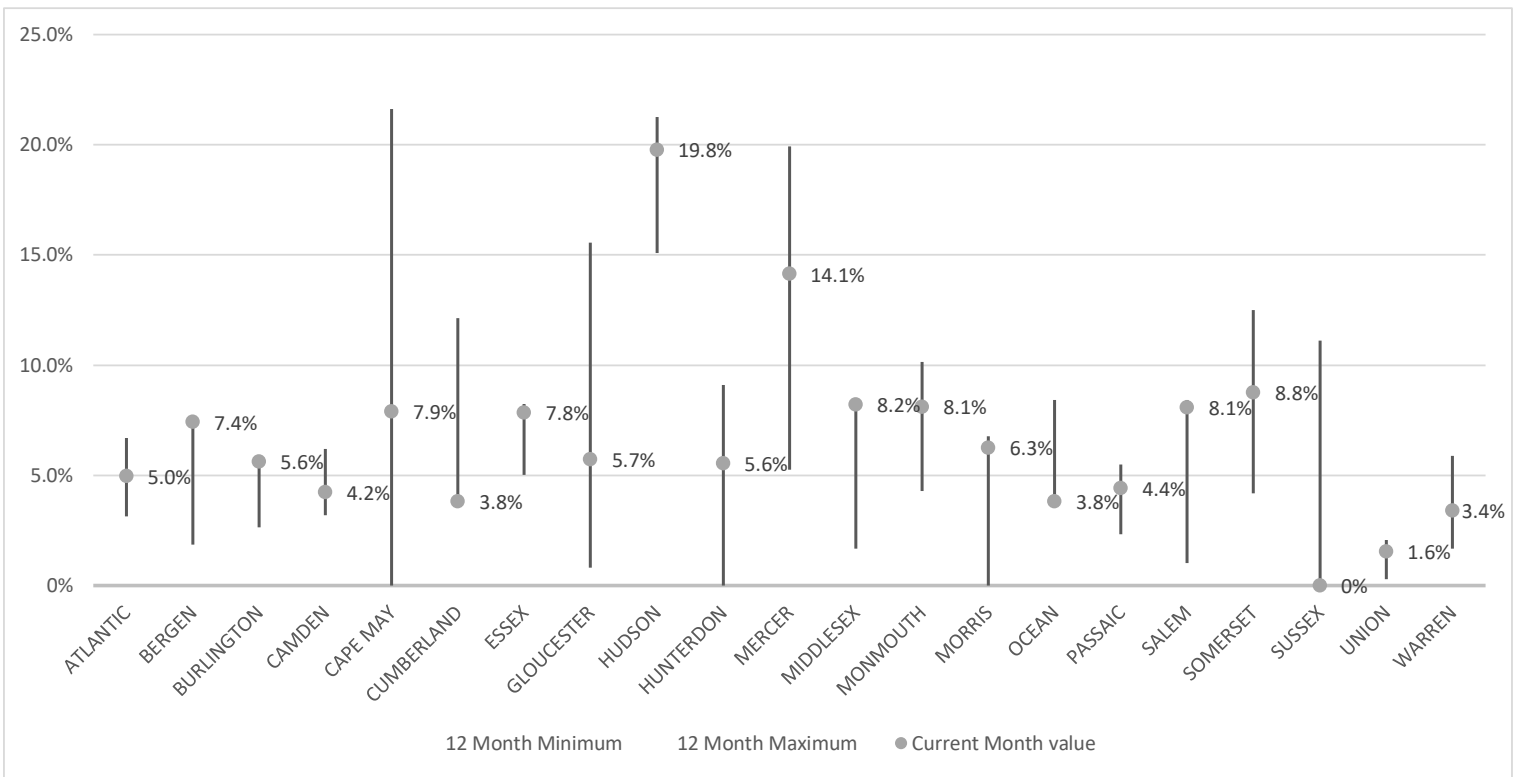
*=lower caseload % change



Data is derived from NJ MMIS Shared Data Warehouse Issuance files.
Effective July 2013 this data query source was converted to the SDW

TABLE 3 :

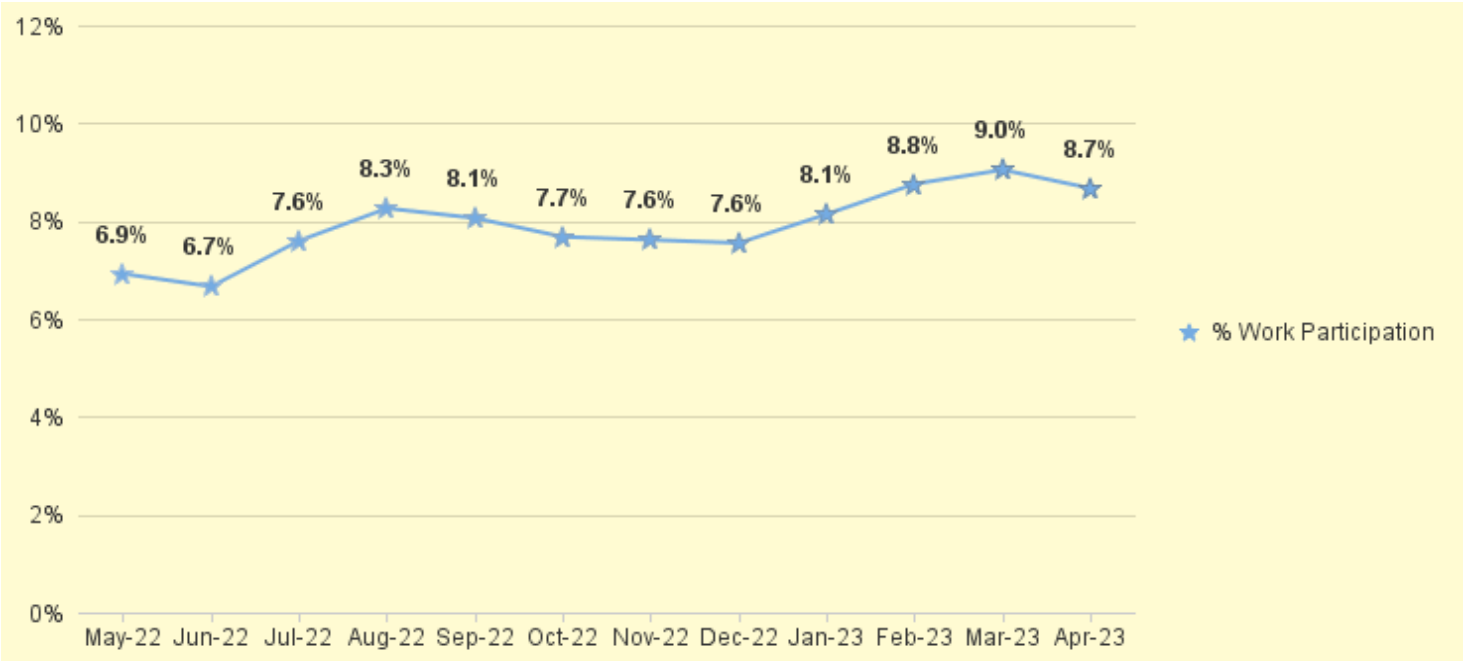
Work Participation Rates Achieved Over 12 Month Period
Ending with APRIL 2023



Data is derived from NJ MMIS Shared Data Warehouse Issuance files.
Effective July 2013 this data query source was converted to the SDW

TABLE 4 :

**WFNJ/TANF Work Participation Rates
for 12-Month Period Ending with APRIL 2023 Statewide**



* The Work Participation rate measures the number of countable Temporary Assistance for Needs Families (TANF) participants based on federal formula. The reported rate is considered to be preliminary until officially calculated by the federal government soon after the close of each federal fiscal year.

TABLE 5: NJ SNAP (FOOD STAMPS)

**NUMBER OF PARTICIPATING HOUSEHOLDS, PERSONS, ADULTS
AND CHILDREN FOR APRIL 2023 (STATEWIDE)**

APRIL 2021 THROUGH APRIL 2023

		HOUSEHOLDS				PERSONS				Age 60+	People with a disability
		WFNJ/TANF	Other low income	Total	% CHNG (1 YR)	Adults	Children	TOTAL	% CHNG (1 YR)		
2021	APR	9,474	423,186	432,660	24.3%	470,412	369,625	840,037	23.0%	125,182	224,256
	MAY	9,371	428,961	438,332	19.9%	476,827	373,151	849,978	18.4%	125,750	225,339
	JUN	9,833	440,525	450,358	21.8%	490,430	393,310	883,740	21.8%	126,085	227,479
	JUL	9,067	437,889	446,956	18.8%	485,975	379,528	865,503	17.8%	126,552	227,352
	AUG	9,070	442,333	451,403	17.4%	490,577	383,106	873,683	16.7%	127,091	228,513
	SEP	9,561	447,902	457,463	15.8%	497,122	390,345	887,467	15.4%	127,550	229,863
	OCT	9,822	452,139	461,961	14.3%	502,415	388,925	891,340	13.1%	128,700	231,751
	NOV	9,967	455,343	465,310	14.5%	506,476	391,904	898,380	13.6%	129,292	233,050
	DEC	10,138	458,239	468,377	13.8%	510,116	392,757	902,873	12.8%	129,744	238,680
2021	Average	9,677	435,576	445,253		484,197	379,344	863,541		126,517	227,663
2022	JAN	10,418	457,935	468,353	11.7%	509,801	392,651	902,452	10.7%	157,425	236,238
	FEB	10,486	451,733	462,219	9.3%	503,693	385,199	888,892	8.1%	156,540	232,864
	MAR	10,588	455,766	466,354	9.0%	508,290	388,977	897,267	7.9%	158,331	234,617
	APR	10,706	439,659	450,365	4.1%	491,276	375,105	866,381	3.1%	156,504	231,071
	MAY	10,669	423,672	434,341	-0.9%	474,542	360,324	834,866	-1.8%	154,816	227,400
	JUN	10,650	412,366	423,016	-6.1%	462,757	351,378	814,135	-7.9%	154,107	225,452
	JUL	10,910	400,990	411,900	-7.8%	451,428	343,730	795,158	-8.1%	152,494	222,166
	AUG	12,919	421,433	434,352	-3.8%	475,405	401,190	876,595	0.3%	151,643	224,286
	SEP	11,543	391,350	402,893	-11.9%	440,973	348,303	789,276	-11.1%	150,801	220,166
	OCT	11,175	384,016	395,191	-14.5%	433,352	329,837	763,189	-14.4%	152,434	220,723
	NOV	10,978	386,385	397,363	-14.6%	436,125	332,459	768,584	-14.4%	153,574	221,980
	DEC	11,094	393,042	404,136	-13.7%	443,837	340,993	784,830	-13.1%	155,061	227,586
2022	Average	11,011	418,196	429,207		469,290	362,512	831,802		154,511	227,191
2023	JAN	11,120	388,312	399,432	-14.7%	438,140	336,442	774,582	-14.2%	153,633	223,462
	FEB	10,806	388,213	399,019	-13.7%	437,832	336,772	774,604	-12.9%	154,374	223,539
	MAR	12,027	407,914	419,941	-10.0%	460,274	373,470	833,744	-7.1%	156,031	227,136
	APR	11,987	408,628	420,615	-6.6%	460,514	370,535	831,049	-4.1%	156,584	227,434
2023	Average To Date	11,485	398,267	409,752		449,190	354,305	803,495		155,156	225,393

This Table is based on those Households & Persons that received SNAP issuances (benefits) during the month

Data is derived from NJ MMIS Shared Data Warehouse.

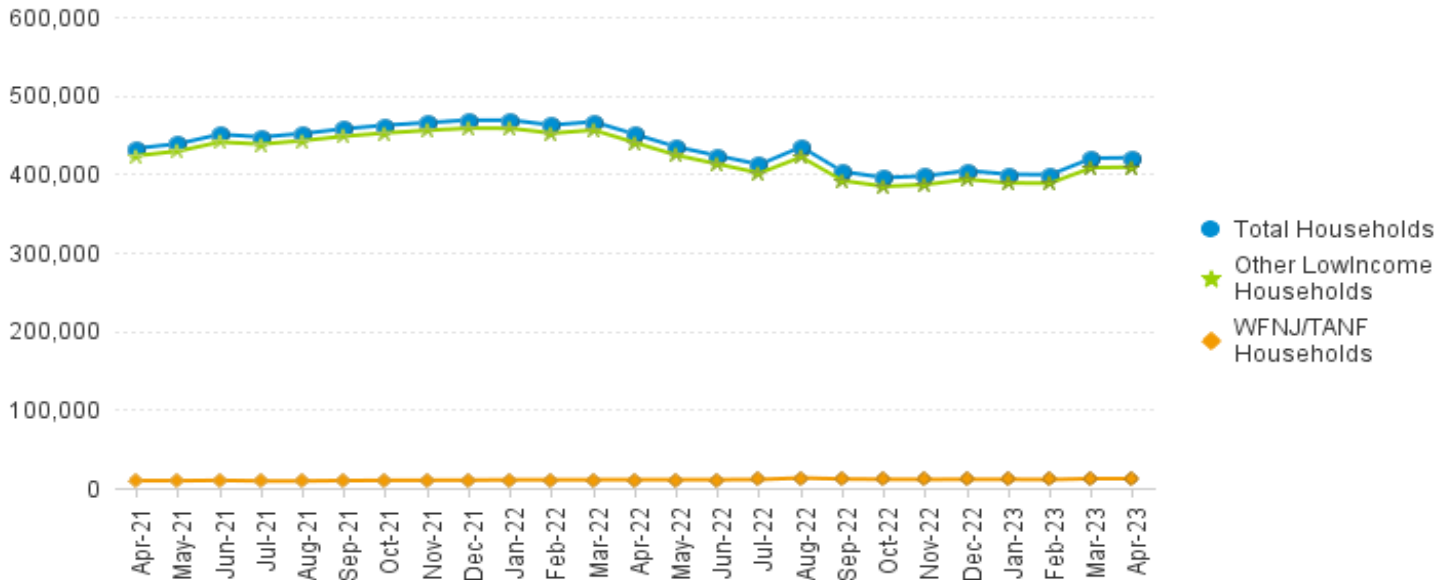
Effective July 2013 this data query source was converted to the SDW.

* Age 60+ and People with a disability columns are independent subsets of total persons. An individual might appear in both columns

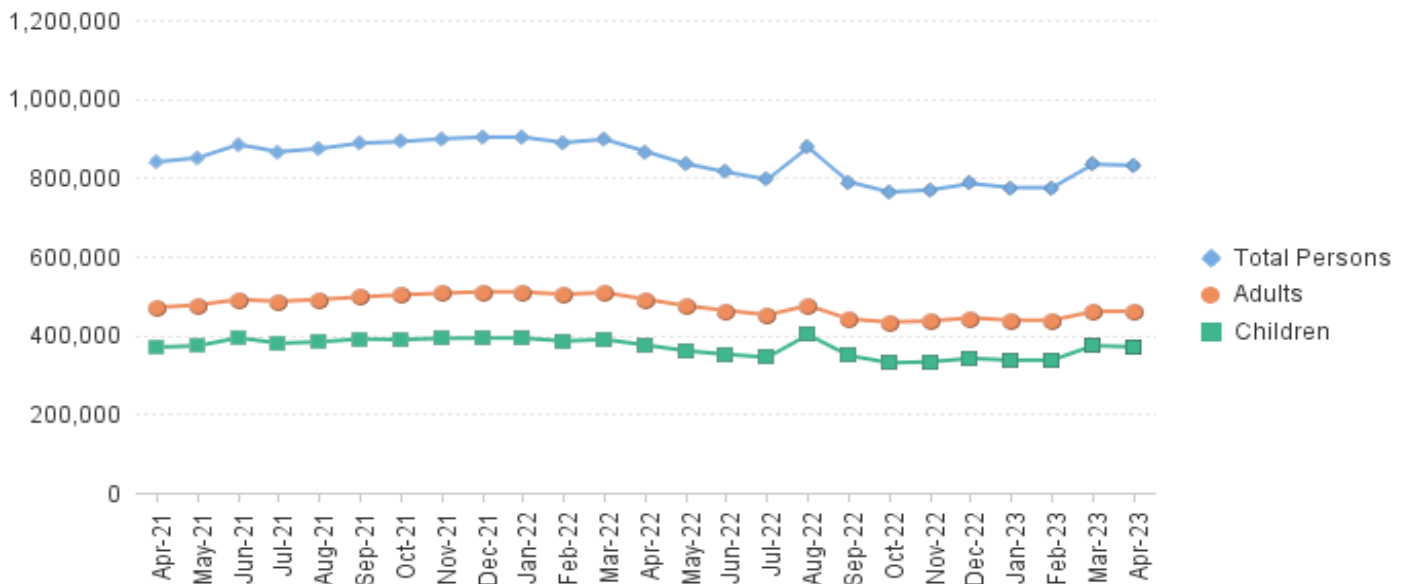
TABLE 6: NJ SNAP (FOOD STAMPS)

TRENDS FOR PARTICIPATING HOUSEHOLDS & PERSONS
APRIL 2021 THROUGH APRIL 2023 (STATEWIDE)

Statewide NJ SNAP Households: APRIL 2021 Through APRIL 2023



Statewide NJ SNAP Persons: APRIL 2021 Through APRIL 2023



Data is derived from NJ MMIS Shared Data Warehouse Issuance files. Effective July 2013 this data query source was converted to the SDW

TABLE 7: NJ SNAP

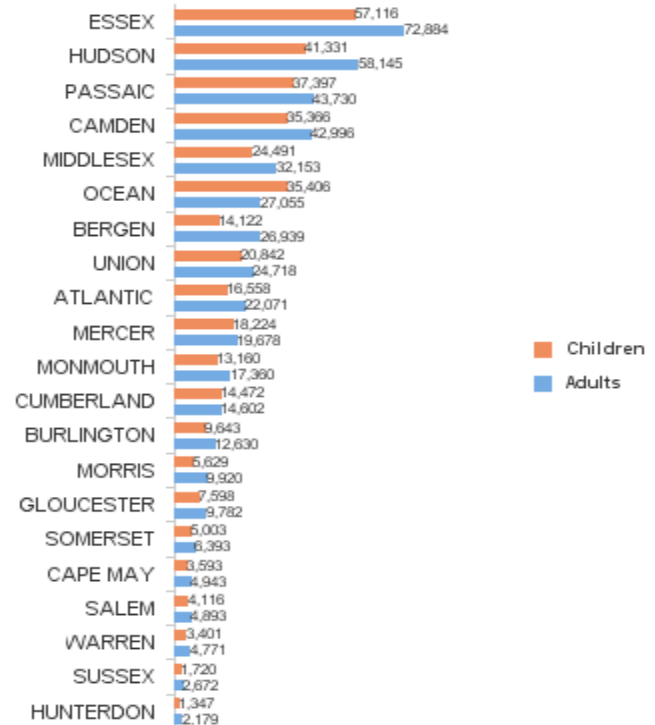
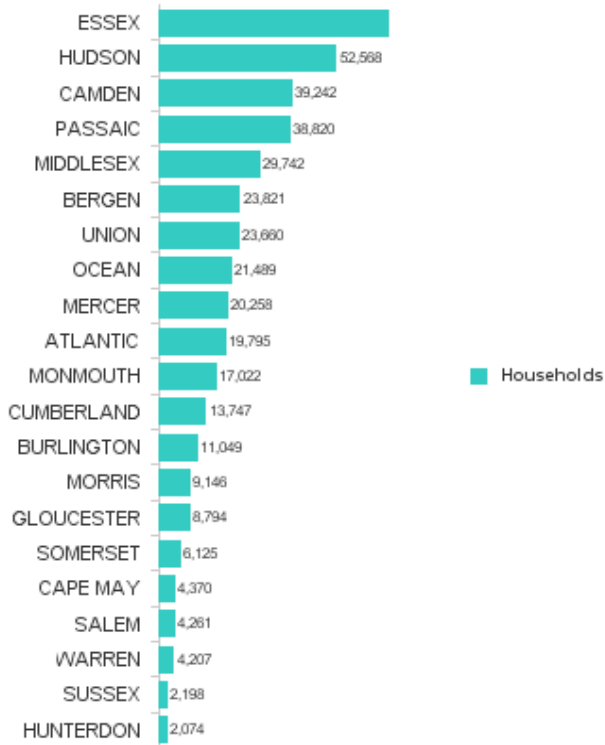
NUMBER OF PARTICIPATING HOUSEHOLDS, PERSONS, ADULTS AND CHILDREN BY COUNTY FOR APRIL 2023

County	HOUSEHOLDS				PERSONS				Age 60+	People with a disability
	WFNJ/ TANF	Other low income	TOTAL	% Chng (1 Yr)	Adults	Children	TOTAL	% Chng (1 Yr)		
ATLANTIC	673	19,122	19,795	-12.8% *	22,071	16,558	38,629	-9.9%	6,843	10,647
BERGEN	444	23,377	23,821	3.5%	26,939	14,122	41,061	6.2%	14,314	16,463
BURLINGTON	523	10,526	11,049	-1.7%	12,630	9,643	22,273	2.0%	3,758	6,710
CAMDEN	1,491	37,751	39,242	-3.2%	42,996	35,366	78,362	-0.3%	11,071	20,062
CAPE MAY	97	4,273	4,370	1.8%	4,943	3,593	8,536	5.3%	1,378	2,358
CUMBERLAND	316	13,431	13,747	4.2%	14,602	14,472	29,074	6.7%	3,704	7,265
ESSEX	1,894	66,333	68,227	-11.7%	72,884	57,116	130,000	-9.8%	20,618	31,583
GLOUCESTER	294	8,500	8,794	-2.5%	9,782	7,598	17,380	1.3%	3,050	6,046
HUDSON	1,782	50,786	52,568	-18.3% *	58,145	41,331	99,476	-15.4% *	22,215	28,368
HUNTERDON	53	2,021	2,074	8.4% Δ	2,179	1,347	3,526	11.5% Δ	788	1,185
MERCER	831	19,427	20,258	8.0%	19,678	18,224	37,902	10.3%	5,830	10,860
MIDDLESEX	623	29,119	29,742	-3.1%	32,153	24,491	56,644	-1.4%	14,050	17,918
MONMOUTH	263	16,759	17,022	1.9%	17,360	13,160	30,520	3.9%	6,990	10,065
MORRIS	143	9,003	9,146	4.2%	9,920	5,629	15,549	6.5%	4,939	5,597
OCEAN	357	21,132	21,489	9.4% Δ	27,055	35,406	62,461	10.9%	7,019	11,000
PASSAIC	985	37,835	38,820	-14.7% *	43,730	37,397	81,127	-13.5% *	15,342	19,408
SALEM	161	4,100	4,261	7.0%	4,893	4,116	9,009	9.3%	1,202	2,417
SOMERSET	218	5,907	6,125	4.9%	6,393	5,003	11,396	7.7%	2,583	3,575
SUSSEX	53	2,145	2,198	5.3%	2,672	1,720	4,392	11.1% Δ	918	1,566
UNION	688	22,972	23,660	-12.4%	24,718	20,842	45,560	-10.9% *	8,556	11,776
WARREN	98	4,109	4,207	10.0% Δ	4,771	3,401	8,172	11.2% Δ	1,416	2,565
NJ TOTAL	11,987	408,628	420,615	-6.6%	460,514	370,535	831,049	-4.1%	156,584	227,434

Δ=higher caseload % change

*=lower caseload % change

Total NJ SNAP Recipients
APRIL 2023 by County



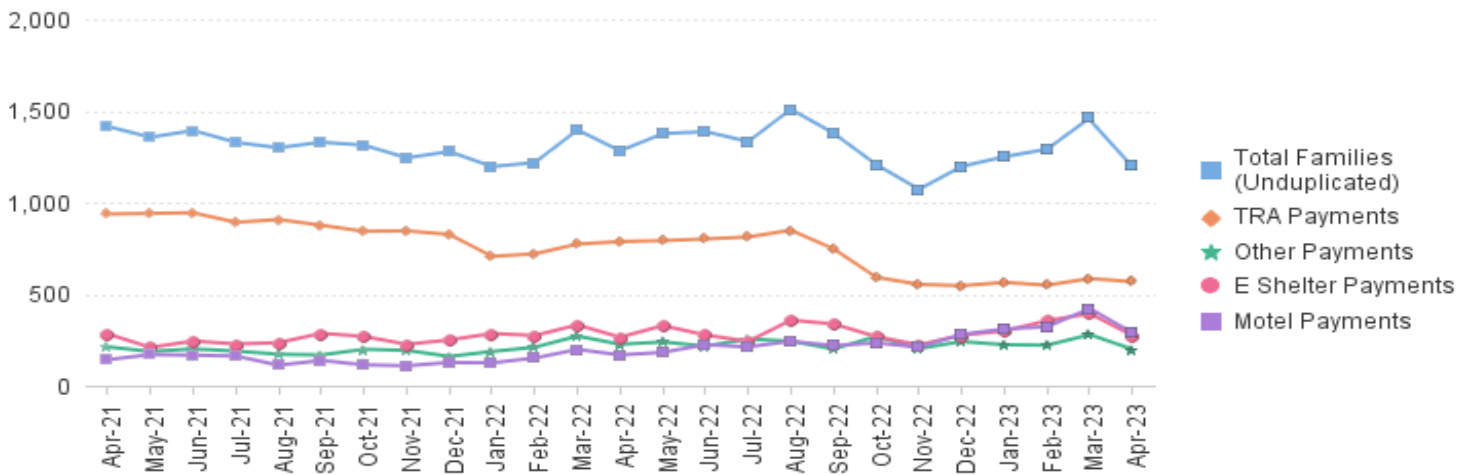
Data is derived from NJ MMIS Shared Data Warehouse.
Effective July 2013 this data query source was converted to the SDW.

* Age 60+ and People with a disability columns are independent subsets of total persons. An individual might appear in both columns

TABLE 8: EMERGENCY ASSISTANCE (STATEWIDE)
TOTAL NUMBER OF ELIGIBLE FAMILIES RECEIVING EMERGENCY ASSISTANCE PAYMENTS
APRIL 2021 THROUGH APRIL 2023 - STATEWIDE

		Total WFNJ/EA Families (Undupl)	% CHNG (1 YR)	Temp Rent Asst. Payments (Undupl)	% CHNG (1 YR)	Motel Housing Payments (Undupl)	% CHNG (1 YR)	Shelter/Transitional Housing Payments (Undupl)	% CHNG (1 YR)	Other WFNJ/EA Payments (Undupl)	% CHNG (1 YR)
2021	APR	1,415	-2.7%	937	-2.4%	142	-7.2%	283	-15.3%	212	47.2%
	MAY	1,356	-6.1%	941	5.7%	170	-28.6%	209	-22.6%	187	14.7%
	JUN	1,393	-14.6%	944	-6.9%	167	-37.0%	244	-20.0%	201	-14.1%
	JUL	1,328	-14.7%	892	-12.0%	162	-35.5%	228	-10.2%	189	-19.2%
	AUG	1,299	-20.0%	907	-9.8%	112	-59.9%	235	-22.4%	172	-27.7%
	SEP	1,329	-18.2%	876	-13.9%	138	-46.5%	286	-2.7%	168	-28.2%
	OCT	1,313	-15.7%	843	-15.4%	114	-43.3%	269	-7.9%	199	-19.4%
	NOV	1,244	-7.4%	845	-10.9%	109	-35.9%	226	25.6%	193	-5.4%
	DEC	1,278	-8.4%	826	-12.0%	127	-35.2%	250	21.4%	160	-20.4%
2021	Average	1,343		897		153		243		196	
2022	JAN	1,196	-12.0%	706	-21.4%	125	-34.2%	285	17.8%	187	-11.0%
	FEB	1,218	-5.9%	720	-19.5%	151	-12.2%	274	57.5%	210	-1.4%
	MAR	1,396	-7.7%	773	-19.5%	198	-14.7%	332	20.7%	271	11.1%
	APR	1,282	-9.4%	787	-16.0%	168	18.3%	265	-6.4%	226	6.6%
	MAY	1,376	1.5%	792	-15.8%	182	7.1%	328	56.9%	239	27.8%
	JUN	1,387	-0.4%	801	-15.1%	224	34.1%	277	13.5%	216	7.5%
	JUL	1,333	0.4%	812	-9.0%	212	30.9%	242	6.1%	255	34.9%
	AUG	1,509	16.2%	849	-6.4%	243	117.0%	358	52.3%	243	41.3%
	SEP	1,378	3.7%	747	-14.7%	219	58.7%	337	17.8%	201	19.6%
	OCT	1,207	-8.1%	592	-29.8%	234	105.3%	268	-0.4%	269	35.2%
	NOV	1,072	-13.8%	553	-34.6%	210	92.7%	223	-1.3%	203	5.2%
	DEC	1,197	-6.3%	546	-33.9%	280	120.5%	276	10.4%	241	50.6%
2022	Average	1,296		723		204		289		230	
2023	JAN	1,250	4.5%	564	-20.1%	310	148.0%	299	4.9%	224	19.8%
	FEB	1,291	6.0%	549	-23.8%	322	113.2%	355	29.6%	221	5.2%
	MAR	1,462	4.7%	585	-24.3%	421	112.6%	394	18.7%	279	3.0%
	APR	1,206	-5.9%	568	-27.8%	289	72.0%	274	3.4%	199	-11.9%
2023	Average To Date	1,302		567		336		331		231	

NJ STATEWIDE
Families Receiving Emergency Assistance
APRIL 2021 THROUGH APRIL 2023



* Effective Feb '11 Transitional Housing Payments were removed from 'Other EA Payments' and added to 'Shelter Payments'.

TABLE 9: EMERGENCY ASSISTANCE (BY COUNTY)
TOTAL NUMBER OF ELIGIBLE FAMILIES RECEIVING EMERGENCY ASSISTANCE PAYMENTS
BY COUNTY (UNDUPLICATED CASES) FOR APRIL 2023

County	TOTAL	%	Temp Rent Asst. Payments (Undupl)	Motel Housing Payments (Undupl)	Shelter/Transitional Housing Payments (Undupl)	Other WFNJ/EA Payments (Undupl)	SSI Recipients Receiving EA **
	WFNJ/EA Families (Undupl)	CHNG From APR 22					
ATLANTIC	28	-22.2%	17	1	1	12	45
BERGEN	36	-14.3%	21	1	6	12	39
BURLINGTC	141	107.4% Δ	8	76	62	6	74
CAMDEN	51	75.9%	6	27	16	5	16
CAPE MAY	23	27.8%	4	19	0	1	11
CUMBERLA	0	0%	0	0	0	0	0
ESSEX	93	13.4%	31	0	52	17	7
GLOUCESTER	13	18.2%	1	0	6	9	9
HUDSON	240	8.6%	166	20	46	40	69
HUNTERDO	3	-76.9% *	1	0	0	2	3
MERCER	123	-0.8%	82	27	0	26	67
MIDDLESEX	59	-39.8%	36	12	8	18	40
MONMOUTH	42	50.0%	1	15	29	2	21
MORRIS	15	7.1%	6	7	1	2	22
OCEAN	34	-56.4% *	23	8	0	5	11
PASSAIC	118	-46.4%	101	1	10	14	10
SALEM	8	100.0% Δ	3	0	2	3	4
SOMERSET	61	-1.6%	32	12	10	15	40
SUSSEX	7	133.3% Δ	0	1	5	1	1
UNION	106	-9.4%	28	59	19	8	22
WARREN	5	-64.3% *	1	3	1	1	1
NJ Total	1,206	-5.9%	568	289	274	199	512

Δ=higher caseload % change

*=lower caseload % change

** SSI-EA includes pay codes 22 and 24, data is derived from NJ Division of Family Development FAMIS Report #FM430-03A
 WFNJ/EA data is derived from NJ MMIS Shared Data Warehouse.
 Effective July 2013 this data query source was converted to the SDW.

Number WFNJ Families Receiving EA by County
APRIL 2023

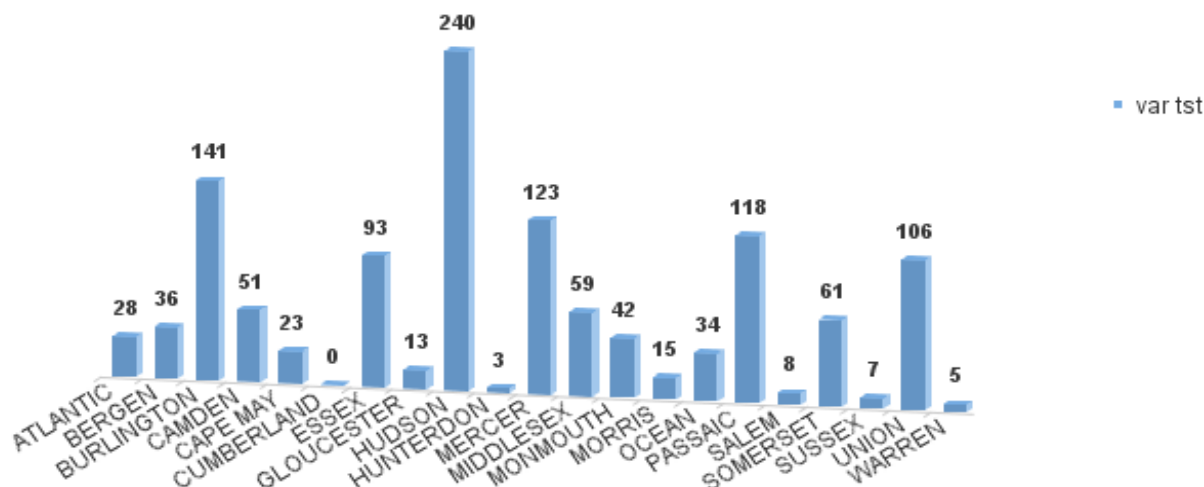


TABLE 10: GENERAL ASSISTANCE PROGRAM
NUMBER OF EMPLOYABLE AND UNEMPLOYABLE RECIPIENTS AND EMERGENCY ASSISTANCE PAYMENTS - STATEWIDE
APRIL 2021 THROUGH APRIL 2023

PROGRAM	Total Cases						Emergency Assistance Cases			
	Employable	% Chng (1 Yr)	Unemployable	% Chng (1 Yr)	Total	% Chng (1 Yr)	Temporary Rental Assistance	Other GA-EA	Total	% Chng (1 Yr)
2021 APR	9,499	70.0%	4,288	-26.9%	13,787	20.4%	832	1,204	2,036	15.2%
MAY	9,630	38.8%	4,421	-23.6%	14,051	10.5%	819	491	1,310	-28.7%
JUN	9,007	18.7%	4,130	-32.8%	13,247	0.1%	794	1,108	1,902	-12.4%
JUL	9,090	13.7%	4,078	-26.1%	13,168	-2.6%	833	1,121	1,954	-9.6%
AUG	9,120	12.3%	3,982	-24.3%	13,102	-2.1%	753	1,091	1,844	-10.6%
SEP	9,045	10.6%	3,914	-23.7%	12,959	-2.6%	787	1,114	1,901	-12.9%
OCT	9,309	14.1%	3,875	-22.3%	13,184	0.3%	757	1,061	1,818	-7.3%
NOV	9,668	17.5%	3,853	-20.1%	13,521	3.6%	711	1,011	1,722	0.2%
DEC	10,040	17.6%	3,855	-17.8%	13,895	5.0%	742	1,071	1,813	-6.7%
2021 AVERAGE	9,342		4,148		13,499		792	1,076	1,868	
2022 JAN	10,239	14.0%	3,801	-16.5%	14,040	3.8%	677	947	1,624	-22.2%
FEB	10,687	17.6%	3,812	-13.5%	14,499	7.4%	727	1,126	1,853	2.9%
MAR	11,462	19.0%	3,870	-12.5%	15,332	9.1%	719	1,399	2,118	-4.8%
APR	11,810	24.3%	3,823	-10.8%	15,633	13.4%	742	1,196	1,938	-4.8%
MAY	12,039	25.0%	3,805	-13.9%	15,844	12.8%	750	1,152	1,902	45.2%
JUN	12,306	36.6%	3,858	-6.6%	16,164	22.0%	782	1,250	2,032	6.8%
JUL	12,451	37.0%	3,862	-5.3%	16,313	23.9%	758	1,196	1,954	0.0%
AUG	9,785	7.3%	3,342	-16.1%	13,127	0.2%	691	1,396	2,087	13.2%
SEP	8,370	-7.5%	3,225	-17.6%	11,595	-10.5%	635	1,261	1,896	-0.3%
OCT	7,829	-15.9%	3,291	-15.1%	11,120	-15.7%	574	1,184	1,758	-3.3%
NOV	7,313	-24.4%	3,326	-13.7%	10,639	-21.3%	602	1,040	1,642	-4.6%
DEC	6,950	-30.8%	3,413	-11.5%	10,363	-25.4%	599	1,157	1,756	-3.1%
2022 AVERAGE	10,103		3,619		13,722		688	1,192	1,880	
2023 JAN	6,760	-34.0%	3,447	-9.3%	10,207	-27.3%	590	1,112	1,702	4.8%
FEB	6,563	-38.6%	3,408	-10.6%	9,971	-31.2%	570	1,170	1,740	-6.1%
MAR	6,607	-42.4%	3,555	-8.1%	10,162	-33.7%	586	1,251	1,837	-10.8%
APR	6,569	-44.4%	3,573	-6.5%	10,142	-35.1%	623	1,158	1,781	-8.1%
2023 AVERAGE TO DATE	6,625		3,496		10,121		592	1,173	1,765	

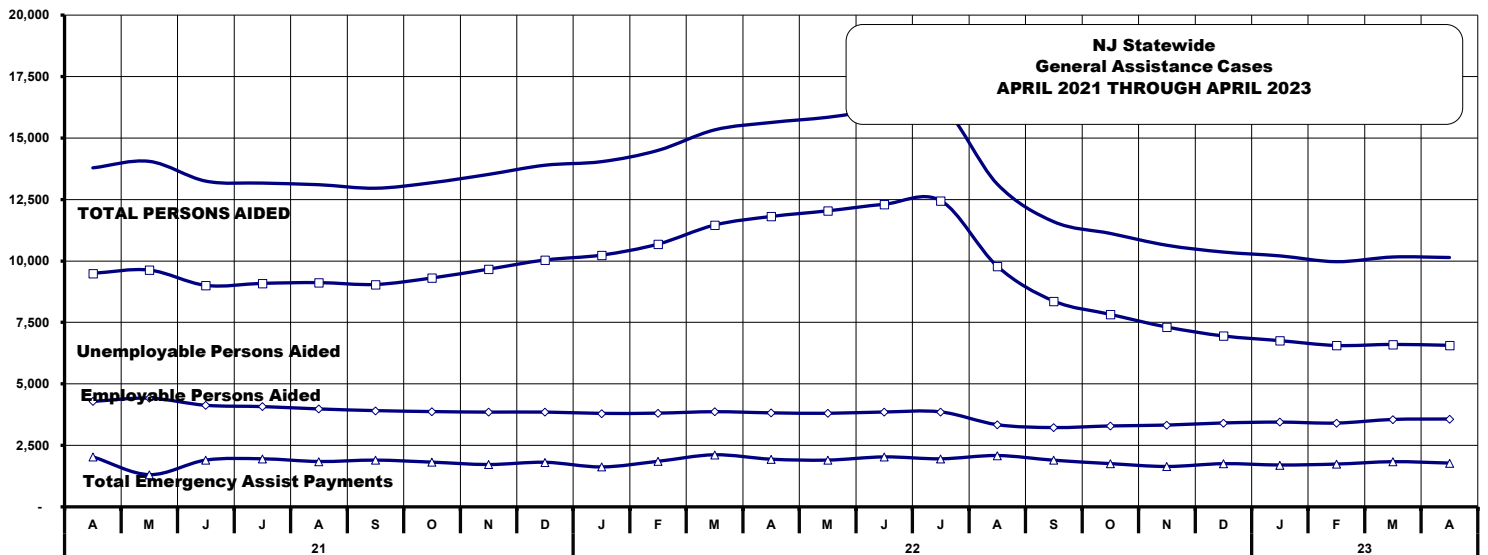


TABLE 11: EMPLOYABLE AND UNEMPLOYABLE CASES AND EMERGENCY ASSISTANCE CASES RECEIVING PAYMENTS BY COUNTY APRIL 2023

PROGRAM	Total Cases						Emergency Assistance Cases				
	Employable	% Chng (1 Yr)	Unemployable	% Chng (1 Yr)	Total	% Chng (1 Yr)	Temporary Rental Assistance	Other GA-EA	Total	% Chng (1 Yr)	Δ
ATLANTIC	789	-40.4%	149	-21.2%	938	-38.0%	82	59	141	28.2%	Δ
BERGEN	252	-37.0%	273	59.6%	525	-8.1%	69	22	91	-13.3%	
BURLINGTON	233	-55.2%	135	-30.4%	368	-48.5%	11	90	101	-27.3%	
CAMDEN	1,103	-42.6%	391	-21.0%	1,494	-38.2%	20	54	74	-35.7%	
CAPE MAY	108	-22.9%	40	-14.9%	148	-20.9%	10	40	50	-12.3%	
CUMBERLAND	209	-39.2%	158	47.7%	367	-18.6%	0	11	11	0.0%	
ESSEX	682	-39.2%	218	-26.1%	900	-36.4%	11	174	185	12.1%	
GLOUCESTER	145	-24.5%	124	17.0%	269	-9.7%	2	2	4	-60.0%	*
HUDSON	739	-56.9%	283	-36.8%	1,022	-52.7%	107	64	171	0.0%	
HUNTERDON	80	-50.9%	60	46.3%	140	-31.4%	9	18	27	-15.6%	
MERCER	351	-33.6%	235	-3.3%	586	-24.1%	48	40	88	-18.5%	
MIDDLESEX	205	-62.1%	335	-4.0%	540	-39.3%	65	83	148	-4.5%	
MONMOUTH	144	-52.8%	213	29.1%	357	-24.0%	3	65	68	-38.2%	
MORRIS	171	-25.0%	145	-11.0%	316	-19.2%	35	48	83	18.6%	
OCEAN	240	-43.7%	217	9.0%	457	-26.9%	26	31	57	-52.9%	
PASSAIC	231	-63.0%	161	-44.1%	392	-57.0%	23	16	39	-51.3%	
SALEM	48	-70.4%	60	81.8%	108	-44.6%	3	2	5	400.0%	Δ
SOMERSET	182	-15.3%	71	36.5%	253	-5.2%	41	78	119	65.3%	Δ
SUSSEX	20	-68.3%	27	58.8%	47	-41.3%	0	2	2	-81.8%	*
UNION	559	-24.9%	198	26.1%	757	-16.0%	47	251	298	12.9%	
WARREN	78	-41.8%	80	25.0%	158	-20.2%	11	8	19	-54.8%	*
NJ TOTAL	6,569	-44.4%	3,573	-6.5%	10,142	-35.1%	623	1,158	1,781	-8.1%	

Δ= ↑ Caseload %

* = ↓ Caseload %

**TABLE 12:
OFFICE OF
CHILD SUPPORT
SERVICES**

**OFFICE OF CHILD SUPPORT SERVICES
QUARTERLY PERFORMANCE REPORT
STATE SUMMARY
TITLE IV-D SOURCE COLLECTION REPORT
Comparison of Quarter-2 (FFY 2022 vs. FFY 2023)**

COLLECTION SOURCE	TOTAL 1/1/2022 - 3/31/2022	% OF TOTAL COLLECTIONS	TOTAL 1/1/2023 - 3/31/2023	% OF TOTAL COLLECTIONS	DOLLAR CHANGE	% CHANGE
FEDERAL TAX	\$18,598,245	6.65%	\$16,139,052	5.90%	\$ (2,459,193)	-13.22%
STATE TAX	\$314,280	0.11%	\$404,499	0.15%	\$ 90,219	28.71%
UIB	\$7,681,812	2.74%	\$6,864,655	2.51%	\$ (817,157)	-10.64%
INC WITHHOLD	\$182,025,127	65.04%	\$182,187,063	66.65%	\$ 161,936	0.09%
FROM OTHER STATES	\$10,397,345	3.72%	\$10,105,532	3.70%	\$ (291,813)	-2.81%
ADMIN ENFORCEMENT	\$5,251,118	1.88%	\$4,775,169	0.02	\$ (475,948)	-9.06%
OTHER	\$55,594,425	19.86%	\$52,874,824	19.34%	\$ (2,719,601)	-4.89%
TOTAL COLLECTIONS*	\$279,862,352	100%	\$273,350,794	100%	\$ (6,511,557)	-2.33%
DISBURSED COLLECTIONS**	\$241,423,424		\$234,232,421		\$ (7,191,003)	-2.98%

* Includes collections on both current support and arrears.

** Includes collections on both current support and arrears; also includes money sent to other states.

SOURCE: NJKiDS (Based on Federal Quarterly Report of Collections - OCSE-34A except Disbursed Collections)

Disbursed Collections obtained from Federal Data Report - OCSE-157, which is reported annually to Congress and used in the calculation of incentive dollars earned by each state.

**TABLE 14:
OFFICE OF
CHILD SUPPORT
SERVICES**

**OFFICE OF CHILD SUPPORT SERVICES
STATE SUMMARY
TITLE IV-D REPORT OF CASES WITH ORDERS
Comparison of April (FFY 2022 vs. FFY 2023)**

County	April 2022			April 2023			Increase or Decrease (-) from FFY 2022 to FFY 2023
	Total Cases	Cases with Orders	% of Cases with Orders	Total Cases	Cases with Orders	% of Cases with Orders	
Atlantic	10,085	9,337	92.6%	9,608	8,882	92.4%	-0.1%
Bergen	10,288	10,024	97.4%	9,918	9,625	97.0%	-0.4%
Burlington	11,243	10,507	93.5%	10,972	10,048	91.6%	-1.9%
Camden	24,819	23,539	94.8%	23,972	22,453	93.7%	-1.2%
Cape May	2,613	2,468	94.5%	2,425	2,295	94.6%	0.2%
Cumberland	10,532	10,043	95.4%	10,195	9,623	94.4%	-1.0%
Essex	34,671	30,384	87.6%	33,366	28,964	86.8%	-0.8%
Gloucester	9,037	8,603	95.2%	8,574	8,164	95.2%	0.0%
Hudson	17,202	15,461	89.9%	16,744	14,959	89.3%	-0.5%
Hunterdon	1,216	1,139	93.7%	1,102	1,039	94.3%	0.6%
Mercer	11,452	10,332	90.2%	11,028	9,851	89.3%	-0.9%
Middlesex	15,096	14,118	93.5%	14,729	13,572	92.1%	-1.4%
Monmouth	11,271	10,665	94.6%	10,500	9,868	94.0%	-0.6%
Morris	5,045	4,859	96.3%	4,699	4,565	97.1%	0.8%
Ocean	12,574	12,081	96.1%	11,958	11,438	95.7%	-0.4%
Passaic	16,525	14,483	87.6%	15,838	13,865	87.5%	-0.1%
Salem	3,618	3,450	95.4%	3,511	3,309	94.2%	-1.1%
Somerset	3,894	3,662	94.0%	3,759	3,424	91.1%	-3.0%
Sussex	2,262	2,217	98.0%	2,197	2,141	97.5%	-0.6%
Union	16,025	15,187	94.8%	15,473	14,580	94.2%	-0.5%
Warren	2,284	2,174	95.2%	2,164	2,045	94.5%	-0.7%
NJ TOTALS	231,752	214,733	92.7%	222,732	204,710	91.9%	-0.7%

SOURCE: NJKiDS (Based on Federal Performance Measures - OCSE-157)

**TABLE 15:
OFFICE OF
CHILD SUPPORT
SERVICES**

**OFFICE OF CHILD SUPPORT SERVICES
STATE SUMMARY
TITLE IV-D COLLECTIONS ON CURRENT SUPPORT**

Comparison of April (FFY 2022 vs. FFY 2023)

County	April 2022			April 2023			Increase or Decrease (-) from FFY 2022 to FFY 2023
	Total Current Support Due	Total Current Support Distributed	Total Collection Rate	Total Current Support Due	Total Current Support Distributed	Total Collection Rate	
Atlantic	\$3,312,870	\$2,078,843	62.8%	\$3,112,269	\$2,022,254	65.0%	2.2%
Bergen	\$7,285,984	\$5,428,788	74.5%	\$6,868,364	\$5,092,425	74.1%	-0.4%
Burlington	\$4,855,709	\$3,303,387	68.0%	\$4,627,675	\$3,178,799	68.7%	0.7%
Camden	\$6,972,023	\$4,074,106	58.4%	\$6,540,320	\$3,885,140	59.4%	1.0%
Cape May	\$963,967	\$620,784	64.4%	\$856,092	\$571,994	66.8%	2.4%
Cumberland	\$2,680,281	\$1,561,536	58.3%	\$2,512,600	\$1,455,850	57.9%	-0.3%
Essex	\$9,273,264	\$5,349,326	57.7%	\$8,780,160	\$5,183,852	59.0%	1.4%
Gloucester	\$3,677,427	\$2,417,973	65.8%	\$3,359,753	\$2,216,290	66.0%	0.2%
Hudson	\$6,370,197	\$4,117,642	64.6%	\$6,180,362	\$4,049,890	65.5%	0.9%
Hunterdon	\$1,040,130	\$850,817	81.8%	\$910,560	\$756,855	83.1%	1.3%
Mercer	\$3,479,442	\$2,162,124	62.1%	\$3,366,460	\$2,155,691	64.0%	1.9%
Middlesex	\$6,445,809	\$4,393,682	68.2%	\$6,296,790	\$4,331,265	68.8%	0.6%
Monmouth	\$5,979,207	\$4,319,902	72.2%	\$5,486,674	\$3,964,062	72.2%	0.0%
Morris	\$3,839,391	\$2,787,324	72.6%	\$3,565,710	\$2,595,867	72.8%	0.2%
Ocean	\$5,635,018	\$3,986,024	70.7%	\$5,311,750	\$3,773,926	71.0%	0.3%
Passaic	\$5,555,718	\$3,459,097	62.3%	\$5,222,136	\$3,261,404	62.5%	0.2%
Salem	\$989,054	\$586,013	59.2%	\$936,583	\$568,131	60.7%	1.4%
Somerset	\$2,520,752	\$2,048,429	81.3%	\$2,244,957	\$1,829,601	81.5%	0.2%
Sussex	\$1,521,564	\$1,144,026	75.2%	\$1,421,315	\$1,078,909	75.9%	0.7%
Union	\$6,095,319	\$4,095,138	67.2%	\$5,862,326	\$3,853,971	65.7%	-1.4%
Warren	\$1,068,860	\$793,925	74.3%	\$1,014,386	\$755,025	74.4%	0.2%
NJ TOTALS	\$89,561,983	\$59,578,887	66.5%	\$84,477,245	\$56,581,203	67.0%	0.5%

SOURCE: NJKiDS (Based on Federal Performance Measures - OCSE-157)

**TABLE 16:
OFFICE OF
CHILD SUPPORT
SERVICES**

**OFFICE OF CHILD SUPPORT SERVICES
STATE SUMMARY
TITLE IV-D CASES ARREARS COLLECTION REPORT**
Comparison of April (FFY 2022 vs. FFY 2023)

County	April 2022			April 2023			Increase or Decrease (-) from FFY 2022 to FFY 2023
	Total Cases with Arrears	Total Amount Collected	Average Arrears Collection per Case	Total Cases with Arrears	Total Amount Collected	Average Arrears Collection per Case	
Atlantic	6,255	\$1,078,299	\$172.39	6,017	\$620,253	\$103.08	-\$69.31
Bergen	6,480	\$1,361,802	\$210.15	6,340	\$1,070,357	\$168.83	-\$41.33
Burlington	6,975	\$1,448,733	\$207.70	6,731	\$856,899	\$127.31	-\$80.40
Camden	14,330	\$2,641,531	\$184.34	13,866	\$1,549,690	\$111.76	-\$72.57
Cape May	1,684	\$339,062	\$201.34	1,577	\$169,272	\$107.34	-\$94.01
Cumberland	6,263	\$1,112,249	\$177.59	6,132	\$632,859	\$103.21	-\$74.38
Essex	18,740	\$3,922,443	\$209.31	17,840	\$2,540,021	\$142.38	-\$66.93
Gloucester	5,683	\$1,002,257	\$176.36	5,466	\$647,036	\$118.37	-\$57.99
Hudson	10,403	\$1,898,258	\$182.47	10,240	\$1,143,345	\$111.65	-\$70.82
Hunterdon	705	\$197,546	\$280.21	674	\$98,503	\$146.15	-\$134.06
Mercer	6,873	\$1,376,519	\$200.28	6,856	\$859,787	\$125.41	-\$74.87
Middlesex	9,137	\$1,951,301	\$213.56	9,049	\$1,035,413	\$114.42	-\$99.14
Monmouth	6,809	\$1,450,201	\$212.98	6,436	\$952,938	\$148.06	-\$64.92
Morris	3,263	\$709,687	\$217.50	3,061	\$475,896	\$155.47	-\$62.02
Ocean	7,518	\$1,383,178	\$183.98	7,330	\$857,262	\$116.95	-\$67.03
Passaic	9,648	\$1,905,640	\$197.52	9,418	\$1,098,850	\$116.68	-\$80.84
Salem	2,089	\$362,931	\$173.73	2,058	\$172,062	\$83.61	-\$90.13
Somerset	2,383	\$516,511	\$216.75	2,246	\$353,574	\$157.42	-\$59.32
Sussex	1,442	\$290,979	\$201.79	1,418	\$182,245	\$128.52	-\$73.27
Union	9,794	\$1,943,617	\$198.45	9,544	\$1,154,741	\$120.99	-\$77.46
Warren	1,449	\$262,251	\$180.99	1,372	\$207,237	\$151.05	-\$29.94
NJ TOTALS	137,923	\$27,154,996	\$196.89	133,671	\$16,678,240	\$124.77	-\$72.11

SOURCE: OCSE-157 Child Support Enforcement Annual Data Report

Table 17**WORK FIRST NEW JERSEY STATISTICAL SUMMARY****WFNJ****APRIL 2023**

COUNTY	EMPLOYMENT DIRECTED ACTIVITIES			EMPLOYED OPEN (WFNJ RECIPIENT)	SUPPORT SERVICES ON ACTIVE CASE		CLOSED FOR EMPLOYMENT THIS MONTH	POST ASSISTANCE CHILD CARE
	CWEP	ALL OTHER TRAINING	JOB SEARCH		CHILD CARE	TRAINING REL. EXPENSES		
ATLANTIC	4	44	15	28	21	46	7	21
BERGEN	39	10	39	16	41	12	8	3
BURLINGTON	87	10	52	20	30	6	7	11
CAMDEN	38	158	6	55	75	4	17	6
CAPE MAY	0	17	3	9	4	4	1	3
CUMBERLAND	2	24	12	13	11	36	6	2
ESSEX	130	141	19	84	93	112	24	47
GLOUCESTER	5	7	7	16	18	8	4	3
HUDSON	0	352	70	90	246	97	22	15
HUNTERDON	0	0	0	0	1	0	1	2
MERCER	90	146	26	48	117	19	16	55
MIDDLESEX	0	28	55	32	35	1	5	5
MONMOUTH	2	6	21	27	18	4	5	24
MORRIS	0	5	0	2	0	0	3	1
OCEAN	0	130	0	15	12	13	10	15
PASSAIC	13	102	0	21	29	6	12	7
SALEM	4	7	10	5	10	2	3	0
SOMERSET	32	18	9	16	18	38	2	1
SUSSEX	0	2	1	2	0	0	3	1
UNION	22	55	0	17	18	2	6	1
WARREN	0	7	0	1	1	0	4	3
STATE TOTAL	468	1,269	345	517	798	410	166	226

Data is derived from NJ Division of Family Development's FAMIS Reports RM064-01 & RM703-51, AdHoc Reports 5549 & 5598 and SDW Report WR00022WZ_CC

**DIVISION OF FAMILY DEVELOPMENT CURRENT PROGRAM STATISTICS
APRIL 2023**

ACRONYMS

EMERGENCY ASSISTANCE (EA) - Payments to those eligible for WFNJ/TANF or WFNJ/GA, authorized during the 30 consecutive days immediately following the emergency (defined as a substantial loss of shelter, food, clothing, or household furnishings by fire, flood or other similar disaster) or if eligible individual or family is in an imminent or actual state of homelessness.

NJ SNAP - Formerly the Food Stamp Program, now known as NJ SNAP (NJ Supplemental Nutrition Assistance Program) authorized by Congress as a nutritional supplement program to provide low income households with more food of greater variety and better nutrition. Program eligibility is based on household income, resources, and expenses for medical, shelter, and dependent care. CWA staff refers certain recipients to the New Jersey Department of Labor for participation in the Food Stamp Employment and Training Program.

FAMIS: Family Assistance Management Information System

GAAS: General Assistance Automated System

NJKIDS: New Jersey Kids Deserve Support (Child Support Information Management System)

NJ MMIS SHARED DATA WAREHOUSE: The Shared Data Warehouse (SDW) is the repository for New Jersey's DFD and Medicaid data. Since 2003, OptumInsight has administered the SDW and provided access to the data through a reporting tool known as Business Objects.

OMEGA: Online Management of Economic Goal Achievement

SSI-EA: Supplemental Security Income-Emergency Assistance

WFNJ: Work First New Jersey - Fully implemented July 1, 1997, this is New Jersey's welfare reform program which responds to the requirements of the Federal Personal Responsibility and Work Opportunity Reconciliation Act (**PRWORA**) of 1996. PRWORA established Temporary Assistance for Needy Families (**TANF**) as the replacement for AFDC cash assistance. WFNJ includes two segments, **WFNJ/TANF** for families with children, and **WFNJ/GA** (General Assistance) for single adults and couples without dependent children. WFNJ emphasizes achieving self-sufficiency and limits lifetime receipt of financial assistance to a total of five years.

**DIVISION OF FAMILY DEVELOPMENT CURRENT PROGRAM STATISTICS
APRIL 2023**

EXPLANATORY NOTES

The Department of Human Services Division of Family Development provides basic income and an opportunity to achieve self-sufficiency for individuals and families served by the Division's programs. The Division provides leadership, direction and supervision to those public agencies responsible for administering those programs and plans for and develops policies to promote self-sufficiency.

WFNJ STATISTICAL SUMMARY (TABLE 17)

Employment Directed Activities (EDA) - From Activities Summary Report (OMEGA report # RM064). Unduplicated count of persons participating in Community Work Experience Program (CWEP), All Other Training, or Job Search.

Number of Persons Employed This Month, Still Receiving TANF - Individuals with open "empl" activity on OMEGA. Ad hoc report.

Participants Receiving Child Care Services - From Issuance Disbursement Summary (OMEGA report # RM703). Total number of active participants who show receipt of Child Care.

Number of Persons Closed on FAMIS Due to Employment - From FAMIS report #5549-RM-2

Post TANF and Receiving Child Care - Persons no longer in receipt of TANF but still receiving child care. From Share Data Warehouse Child Care case count based on Child Care payments (SDW report WR00022WZ_CC).

Table 13 - Child Support Services Paternities Established

Due to an error in paternity statistics affecting months April, May, June and July 2022 Table 13 - TITLE IV-D PATERNITY ESTABLISHMENT REPORT was not included for those months. The error was corrected in August of 2022. Comparative data will resume in August of 2023.