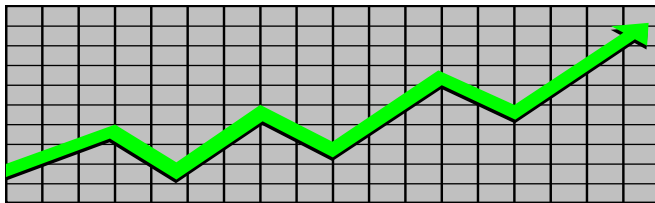


State of New Jersey
Department of Human Services
Division of Family Development

CURRENT PROGRAM STATISTICS



April 2021
Natasha Johnson, Assistant Commissioner

TABLE OF CONTENTS

HIGHLIGHTS:

WFNJ/TANF	ii
NJ SNAP	ii
EMERGENCY ASSISTANCE	ii
GENERAL ASSISTANCE	iii
GA Emergency Assistance.....	iii
GA Program.....	iii
CHILD SUPPORT SERVICES	iii
WORK FIRST NEW JERSEY (WFNJ)	iii
STATISTICS- BY STATE & COUNTY	1
Table 1: WFNJ/TANF Families & Persons (NJ Statewide) April 2019 to 2021.....	1
Table 2: WFNJ/TANF Families (by County)- April 2021.....	2
Table 2B: WFNJ/TANF Persons, Adults, & Children (by County)- April 2021.....	3
Table 3: TANF Work Participation Rates Over 12 Month Period (by County)- April 2021.....	4
Table 4: TANF Work Participation Rates Over 12 Month Period (NJ Statewide)- April 2021.....	5
Table 5: NJ SNAP Households/Persons (NJ Statewide) April 2019 to 2021.....	6
Table 6: NJ SNAP Recipient Trends (NJ Statewide) April 2019 to 2021.....	7
Table 7: NJ SNAP Households/Persons (by County)- April 2021.....	8
Table 8: Emergency Assistance Program (NJ Statewide) April 2019 to 2021.....	9
Table 9: Emergency Assistance Program (by County)- April 2021.....	10
Table 10: General Assistance Program (NJ Statewide) April 2019 to 2021.....	11
Table 11: General Assistance Program (by County)- April 2021.....	12
Table 12: Child Support Services Distributions (NJ Statewide) FFY 2021.....	13
Table 13: Child Support Services Paternities Established- April 2021.....	14
Table 14: Child Support Services Cases With Orders- April 2021.....	15
Table 15: Child Support Services Collections On Current Support- April 2021.....	16
Table 16: Child Support Services Cases With Payments On Arrears- April 2021.....	17
Table 17: WFNJ Statistical Summary- April 2021.....	18
ACRONYMS	19
EXPLANATORY NOTES	20
WFNJ Statistical Summary (Table 17).....	20

DIVISION OF FAMILY DEVELOPMENT CURRENT PROGRAM STATISTICS
APRIL 2021

Each month the Division of Family Development publishes its program statistics for: WFNJ/TANF, NJ SNAP, Emergency Assistance, General Assistance, and Child Support Services. When possible, information is provided separately for children and adults. Many tables also provide trend data with information broken down by county for readers to consider. This report is compiled and prepared by The Bureau of Research & Reporting.

WFNJ/TANF

- At the end of April, the TANF caseload had decreased by 1,322 cases, from 11,235 in April 2020 to 9,913 in April 2021; a decrease of -11.8%.
- The counties with caseloads that increased the most since April 2020 was Passaic (0.3%).
- The counties with caseloads that decreased the most since April 2020 were Sussex (-37.8%), Burlington (-28.9%), and Gloucester (-27.8%).
- Of the WFNJ/TANF cases, 3,224 or 32.5% were child-only in April 2021.
- The counties with the most child-only cases were Camden (516), Essex (403), and Hudson (383).
- Essex (4,279), Hudson (3,580), and Camden (3,169) counties had the greatest number of persons receiving TANF in April 2021.

NJ SNAP (Formerly FOOD STAMPS)

- In April 2021, there were 432,660 households receiving NJ SNAP benefits. The number of NJ SNAP households increased by 84,511 or 24.3%, since April 2020.
- There were 840,037 persons receiving NJ SNAP benefits as of April 2021; an increase of 157,198 or 23% since April 2020.
- The counties having the highest caseload increase since April 2020 were Hudson (44.3%), Union (36.6%), and Essex (34.6%).

EMERGENCY ASSISTANCE

- There were 1,415 TANF families receiving Emergency Assistance (EA) in April 2021; a decrease of 40 or -2.7% since April 2020.
- In April 2021, EA payments were made for 628 SSI recipients.

**DIVISION OF FAMILY DEVELOPMENT CURRENT PROGRAM STATISTICS
APRIL 2021**

- There were 2,036 GA cases with Emergency Assistance payments in April 2021; an increase of 268 or 15.2% since April 2020.
- The counties that showed the highest percent increase in Emergency Assistance payments were Middlesex (124.8%), Hudson (74.5%), and Union (71%).
- The counties that showed the highest percent decrease in Emergency Assistance payments were Cumberland (-44.4%), Salem (-25%), and Essex (-21.8%).

GENERAL ASSISTANCE

- The total numbers of cases receiving GA has increased from 11,449 to 13,787 since April 2020; an increase of 20.4%.
- There were 9,499 Employable GA and 4,288 Unemployable GA cases in April 2021.
- The counties that showed a percent increase for GA cases were Hudson (105.2%), Atlantic (41.9%), and Middlesex (34.4%) since April 2020.
- The counties that showed the highest percent decrease for GA cases since April 2020 were Hunterdon (-29.2%), Sussex (-27.6%), and Gloucester (-19%).
- In April 2021, GA cases showed a -1.9% decrease since March 2021.

CHILD SUPPORT SERVICES (QUARTERLY REPORT)

- The total collection for the Child Support Services Program was about \$294 million from January 2021 to March 2021; a decrease of -4.7% over the same period from FFY 2020.
- Total distributions decreased -3.4% from April 2020.

WORK FIRST NEW JERSEY (WFNJ)

- During the report month of April 2021, there were 180 families in which at least one member was employed and an additional 71 families whose WFNJ assistance cases were closed due to employment - related earnings.
- The three counties with the greatest number of employed active WFNJ recipients were: Mercer (24), Hudson (23), and Middlesex (19).
- There were 300 former TANF cases receiving post-TANF support in the form of child care assistance.

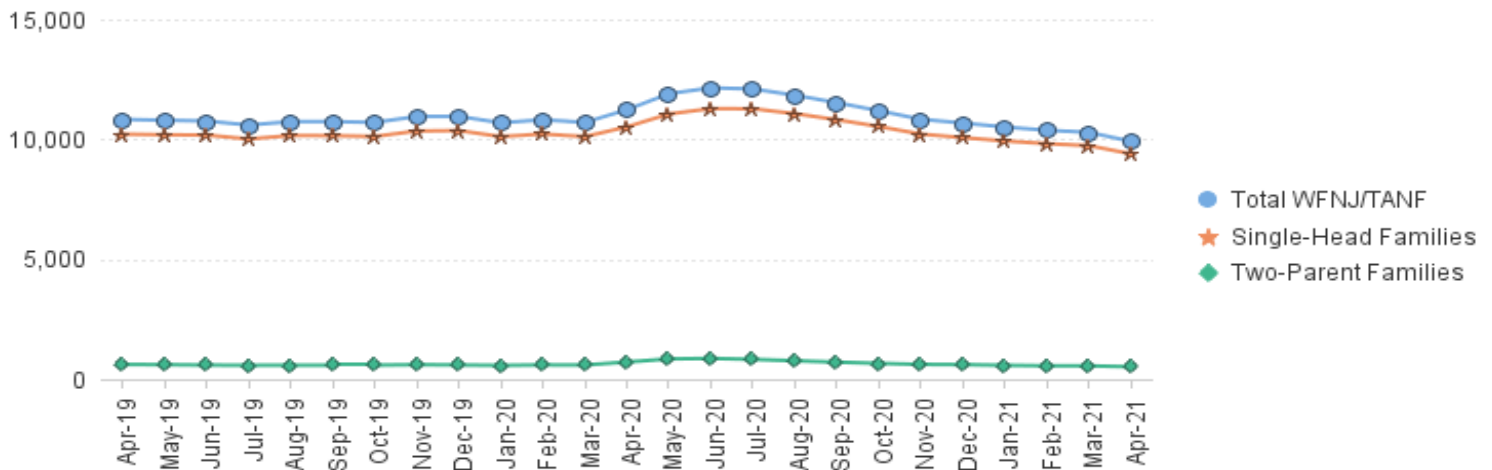
TABLE 1: WFNJ/TANF PROGRAM

STATEWIDE NUMBER OF APPLICATIONS AND TERMINATIONS DURING APRIL 2021
 NUMBER OF ELIGIBLE FAMILIES & PERSONS RECEIVING WFNJ/TANF FOR APRIL 2021

APRIL 2019 THROUGH APRIL 2021

		Cases Added	Cases Closed	Child-Only Cases ‡	Total Single-Head Families	2-Parent Families	Total WFNJ/TANF Families	%CHNG (1 Yr.)	Total Persons	%CHNG (1 Yr.)	Adults	Children
2019	APR	998	1,271	3,906	10,216	614	10,830	-21.5%	26,968	-22.0%	7,538	19,430
	MAY	1,084	1,174	3,830	10,191	606	10,797	-20.1%	26,865	-20.5%	7,573	19,292
	JUN	1,024	1,135	3,790	10,175	588	10,763	-19.3%	26,674	-19.7%	7,561	19,113
	JUL	1,040	1,231	3,710	10,014	580	10,594	-18.0%	26,323	-17.8%	7,464	18,859
	AUG	1,209	1,135	3,723	10,158	582	10,740	-16.1%	26,735	-18.6%	7,599	19,136
	SEP	1,055	1,048	3,679	10,153	586	10,739	-14.8%	26,803	-14.0%	7,646	19,157
	OCT	1,137	1,253	3,556	10,120	586	10,706	-14.1%	26,933	-13.3%	7,736	19,197
	NOV	1,181	1,159	3,664	10,348	605	10,953	-11.1%	27,644	-10.1%	7,894	19,750
	DEC	1,053	1,042	3,689	10,364	593	10,957	-9.5%	27,766	-8.4%	7,861	19,905
2019 Average		1,044	1,220	3,795	10,322	596	10,918		27,263		7,720	19,543
2020	JAN	921	1,183	3,646	10,113	576	10,689	-8.3%	27,129	-6.5%	7,619	19,510
	FEB	1,066	1,007	3,669	10,222	596	10,818	-3.1%	27,517	-1.1%	7,745	19,772
	MAR	915	1,024	3,612	10,113	592	10,705	-3.7%	27,196	-1.5%	7,685	19,511
	APR	1,179	712	3,621	10,519	716	11,235	3.7%	28,765	6.7%	8,330	20,435
	MAY	832	232	3,696	11,057	845	11,902	10.2%	30,734	14.4%	9,051	21,683
	JUN	539	278	3,722	11,281	866	12,147	12.9%	31,370	17.6%	9,291	22,079
	JUL	458	526	3,686	11,274	826	12,100	14.2%	31,216	18.6%	9,240	21,976
	AUG	410	660	3,665	11,070	768	11,838	10.2%	30,454	13.9%	8,941	21,513
	SEP	475	796	3,603	10,817	711	11,528	7.3%	29,531	10.2%	8,636	20,895
	OCT	534	904	3,564	10,532	659	11,191	4.5%	28,657	6.4%	8,286	20,371
	NOV	419	767	3,470	10,218	617	10,835	-1.1%	27,738	0.3%	7,982	19,756
	DEC	434	595	3,410	10,071	607	10,678	-2.5%	27,371	-1.4%	7,875	19,496
2020 Average		682	724	3,614	10,607	698	11,306		28,973		8,390	20,583
2021	JAN	400	585	3,379	9,932	580	10,512	-1.7%	26,960	-0.6%	7,713	19,247
	FEB	378	504	3,347	9,818	559	10,377	-4.1%	26,520	-3.6%	7,589	18,931
	MAR	397	481	3,311	9,735	557	10,292	-3.9%	26,335	-3.2%	7,538	18,797
	APR	298	704	3,224	9,395	518	9,913	-11.8%	25,276	-12.1%	7,207	18,069
2021 Average To Date		368	569	3,315	9,720	554	10,274		26,273		7,512	18,761

NJ STATEWIDE
 Eligible Families Receiving WFNJ/TANF
 APRIL 2019 THROUGH APRIL 2021

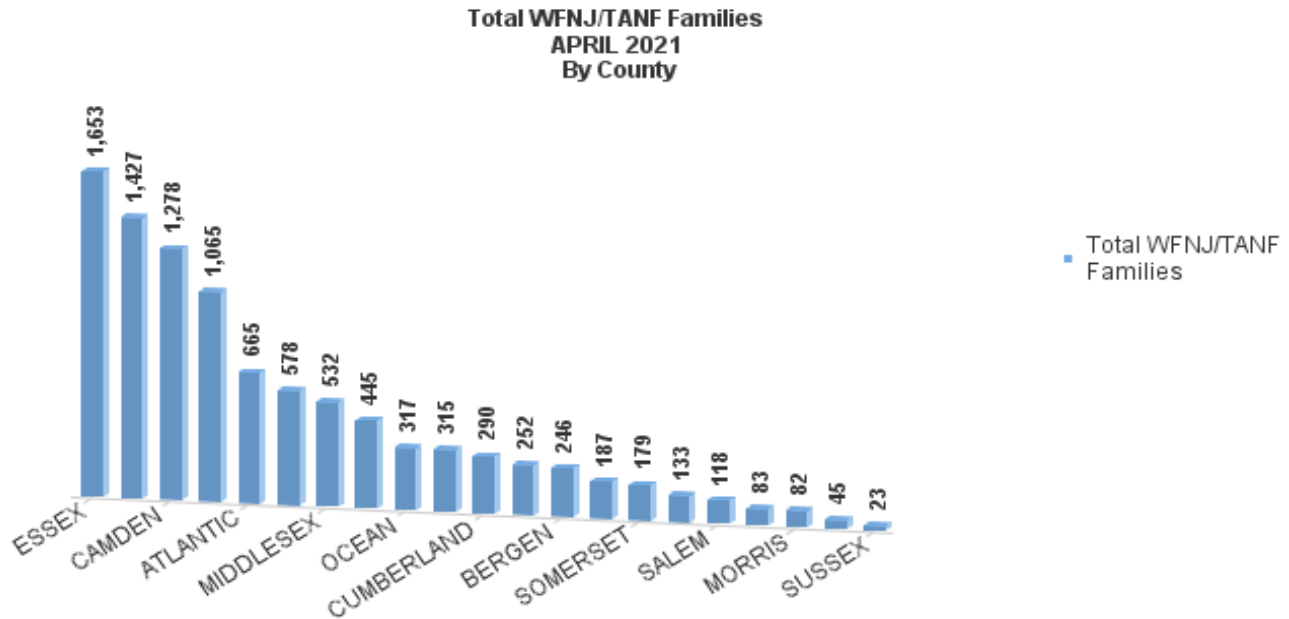


Data is derived from NJ MMIS Shared Data Warehouse Issuance files.
 Effective July 2013 this data query source was converted to the SDW

‡ Child-only cases are defined as families in which no eligible adult receives TANF program benefits, yet the family continues to be headed by at least one of the biological parents, or grandparents, or other appropriate adult.

TABLE 2:
WFNJ/TANF PROGRAM **NUMBER OF APPLICATIONS AND TERMINATIONS BY COUNTY DURING APRIL 2021**
NUMBER OF ELIGIBLE FAMILIES RECEIVING WFNJ/TANF FOR APRIL 2021

County	Cases Added	Cases Closed **	Child-Only	1-Adult	Total Single-Head	Total 2-Parent	Total WFNJ/TANF	%CHNG (3 Mon)	%CHNG (1 Yr.)
			Cases ‡	Cases	Families	Families	Families	(3 Mon)	(1 Yr.)
ATLANTIC	17	26	265	370	635	30	665	-0.7%	-8.5%
BERGEN	9	14	62	168	230	16	246	-3.1%	-13.7%
BURLINGTON	5	35	120	183	303	12	315	-4.8%	-28.9% *
CAMDEN	31	110	516	709	1,225	53	1,278	-6.6%	-12.6%
CAPE MAY	1	10	35	43	78	5	83	-4.6%	-23.1%
CUMBERLAND	8	24	132	145	277	13	290	-3.7%	-25.4%
ESSEX	37	78	403	1,175	1,578	75	1,653	-3.1%	-1.0% Δ
GLOUCESTER	4	12	102	140	242	10	252	-5.3%	-27.8% *
HUDSON	64	125	383	959	1,342	85	1,427	-6.0%	-10.7%
HUNTERDON	0	1	10	30	40	5	45	-6.3%	0.0% Δ
MERCER	23	60	200	354	554	24	578	-11.3%	-18.6%
MIDDLESEX	13	40	203	302	505	27	532	-3.3%	-5.8%
MONMOUTH	9	13	75	106	181	6	187	-1.1%	-22.7%
MORRIS	4	3	27	42	69	13	82	5.1%	-19.6%
OCEAN	13	26	83	222	305	12	317	-6.5%	-15.0%
PASSAIC	30	56	336	676	1,012	53	1,065	-2.5%	0.3% Δ
SALEM	9	13	37	73	110	8	118	-3.3%	-21.9%
SOMERSET	4	10	50	122	172	7	179	-0.6%	-20.8%
SUSSEX	1	1	7	12	19	4	23	-4.2%	-37.8% *
UNION	11	34	142	254	396	49	445	-3.1%	-16.8%
WARREN	5	13	36	86	122	11	133	-7.0%	-15.3%
NJ Total	298	704	3,224	6,171	9,395	518	9,913	-4.5%	-11.8%



Data is derived from NJ MMIS Shared Data Warehouse Issuance files.
 Effective July 2013 this data query source was converted to the SDW

‡ Child-only cases are defined as families in which no eligible adult receives TANF program benefits, yet the family continues to be headed by at least one of the biological parents, or grandparents, or other appropriate adult

** 'Cases closed' include cases that received a benefit in the prior month, but did not receive any TANF benefit for the report month.

Δ=higher caseload % change *=lower caseload % change

TABLE 2B :

WFNJ/TANF PROGRAM

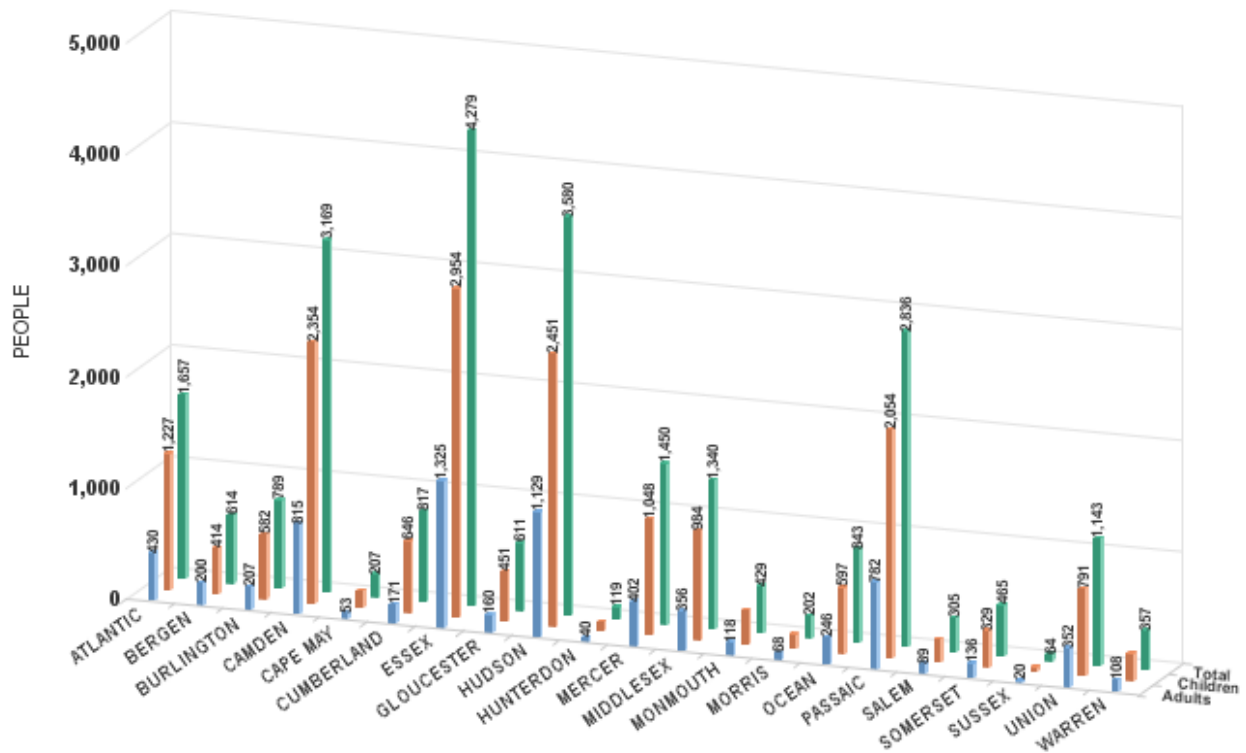
NUMBER OF PARTICIPATING PERSONS, ADULTS, AND CHILDREN BY COUNTY FOR APRIL 2021

PERSONS

County	Adults	Children	Child/Adult Ratio	Total Persons	% Chng (1 Yr)	Persons Per Case
ATLANTIC	430	1,227	2.85	1,657	-10.8%	2.49
BERGEN	200	414	2.07	614	-12.0%	2.50
BURLINGTON	207	582	2.81	789	-29.9% *	2.50
CAMDEN	815	2,354	2.89	3,169	-15.0%	2.48
CAPE MAY	53	154	2.91	207	-23.0%	2.49
CUMBERLAND	171	646	3.78	817	-22.9%	2.82
ESSEX	1,325	2,954	2.23	4,279	-1.2% Δ	2.59
GLOUCESTER	160	451	2.82	611	-26.6% *	2.42
HUDSON	1,129	2,451	2.17	3,580	-12.9%	2.51
HUNTERDON	40	79	1.98	119	-5.6% Δ	2.64
MERCER	402	1,048	2.61	1,450	-16.6%	2.51
MIDDLESEX	356	984	2.76	1,340	-6.8%	2.52
MONMOUTH	118	311	2.64	429	-21.7%	2.29
MORRIS	68	134	1.97	202	-22.9%	2.46
OCEAN	246	597	2.43	843	-13.4%	2.66
PASSAIC	782	2,054	2.63	2,836	1.9% Δ	2.66
SALEM	89	216	2.43	305	-18.7%	2.58
SOMERSET	136	329	2.42	465	-22.8%	2.60
SUSSEX	20	44	2.20	64	-34.0% *	2.78
UNION	352	791	2.25	1,143	-18.2%	2.57
WARREN	108	249	2.31	357	-13.8%	2.68
NJ Total	7,207	18,069	2.51	25,276	-12.1%	2.55

Δ=higher caseload % change

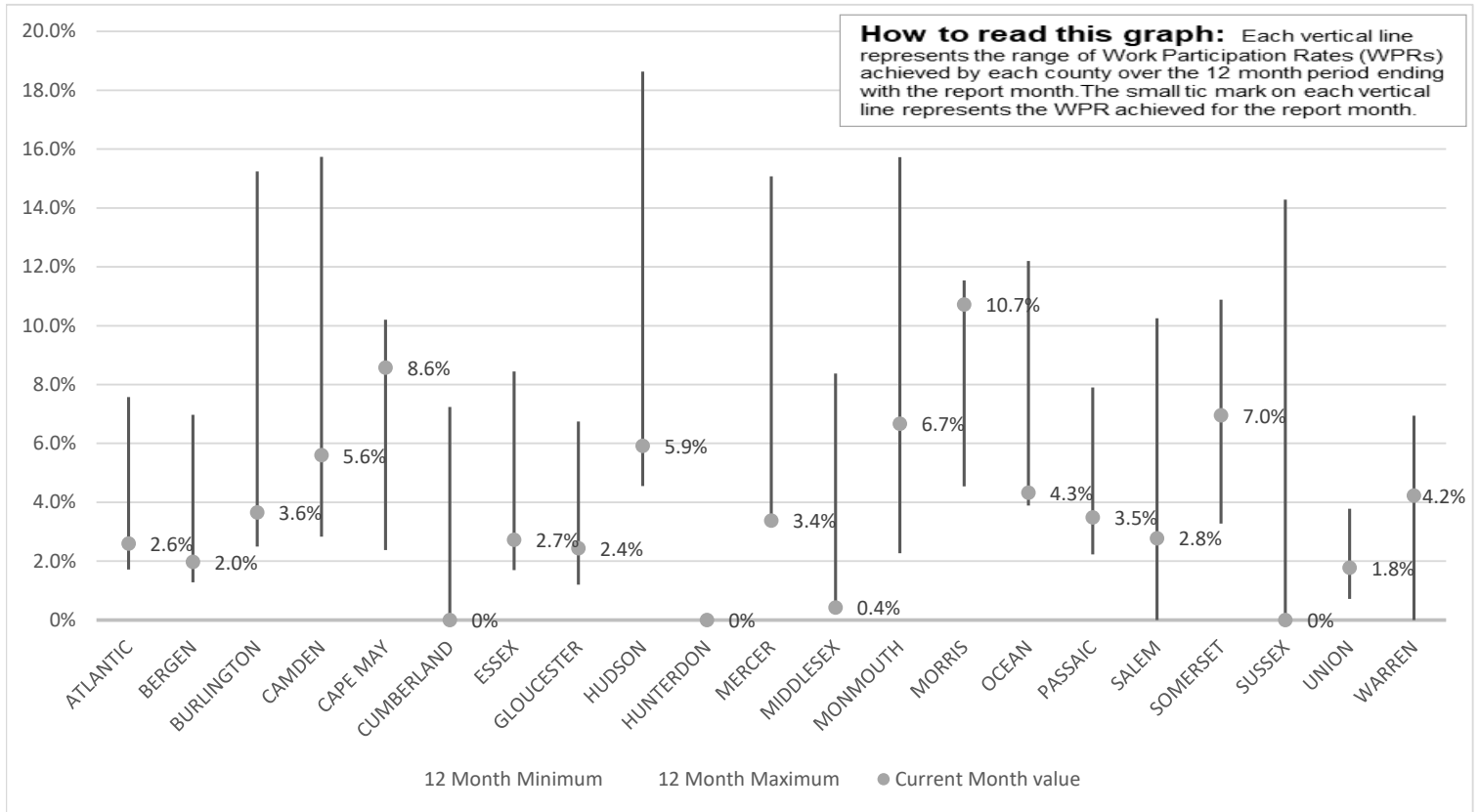
*=lower caseload % change



Data is derived from NJ MMIS Shared Data Warehouse Issuance files. Effective July 2013 this data query source was converted to the SDW

TABLE 3 :

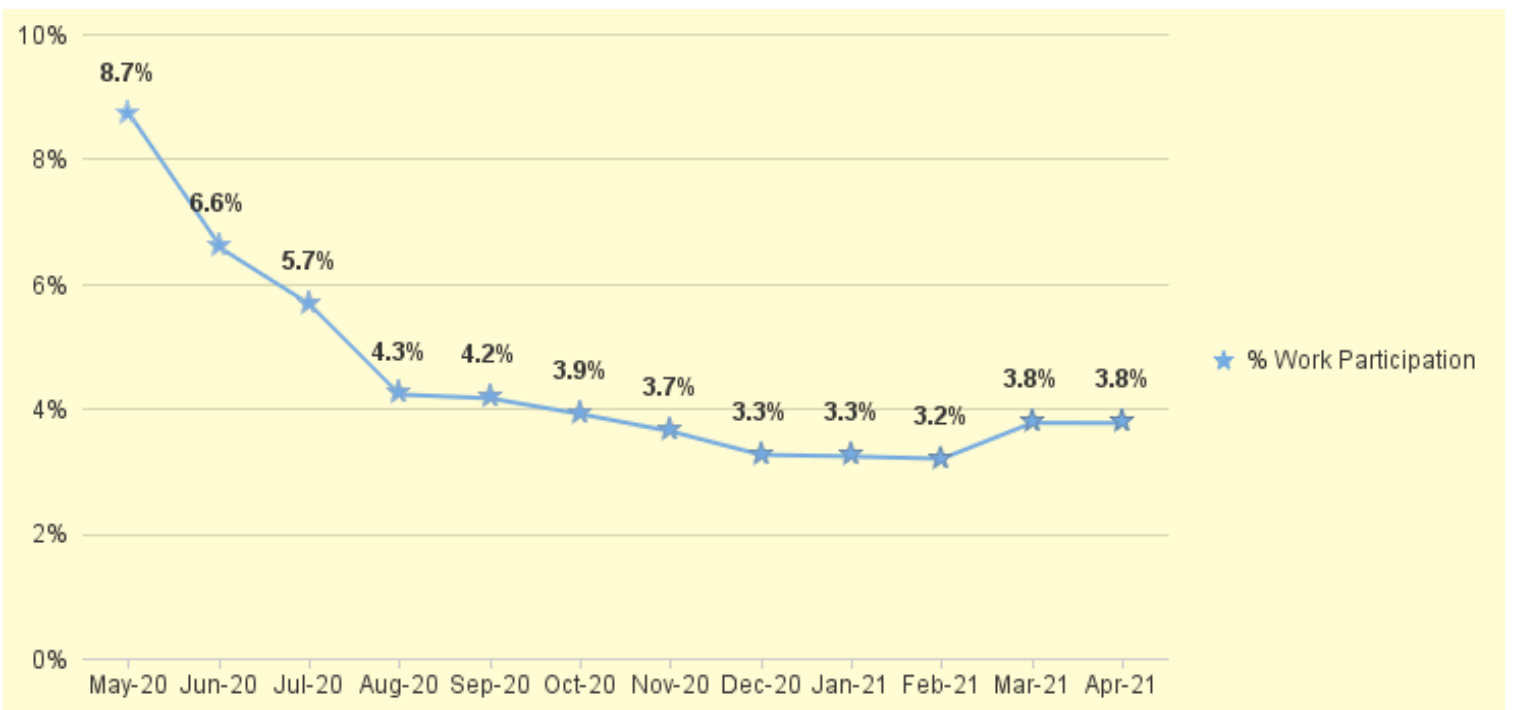
Work Participation Rates Achieved Over 12 Month Period
Ending with APRIL 2021



Data is derived from NJ MMIS Shared Data Warehouse Issuance files.
Effective July 2013 this data query source was converted to the SDW

TABLE 4 :

WFNJ/TANF Work Participation Rates
for 12-Month Period Ending with APRIL 2021 Statewide



* The Work Participation rate measures the number of countable Temporary Assistance for Needs Families (TANF) participants based on federal formula. The reported rate is considered to be preliminary until officially calculated by the federal government soon after the close of each federal fiscal year.

TABLE 5 :
NJ SNAP
(FOOD STAMPS) **NUMBER OF PARTICIPATING HOUSEHOLDS, PERSONS, ADULTS**
AND CHILDREN FOR APRIL 2021 (STATEWIDE)

APRIL 2019 THROUGH APRIL 2021

		HOUSEHOLDS				PERSONS				Age 60+	People with a disability
		WFNJ/ TANF	Other low income	Total	% CHNG (1 YR)	Adults	Children	TOTAL	% CHNG (1 YR)		
2019	APR	10,136	336,819	346,955	-7.0%	367,367	319,361	686,728	-7.6%	122,716	204,624
	MAY	10,284	337,321	347,605	-6.4%	368,192	319,432	687,624	-7.2%	122,594	203,974
	JUN	10,149	336,301	346,450	-7.2%	367,279	317,566	684,845	-8.1%	122,060	203,512
	JUL	9,962	333,891	343,853	-6.4%	365,264	314,222	679,486	-7.2%	121,238	202,824
	AUG	10,570	336,384	346,954	-5.5%	368,890	317,373	686,263	-6.2%	121,200	203,620
	SEP	10,319	331,162	341,481	-7.0%	363,290	310,676	673,966	-7.8%	120,200	202,119
	OCT	10,242	328,140	338,382	-6.8%	360,298	305,917	666,215	-7.7%	119,254	200,853
	NOV	10,580	331,660	342,240	-5.1%	364,880	310,523	675,403	-5.8%	119,560	202,867
DEC	10,445	330,157	340,602	-4.9%	362,992	308,279	671,271	-5.8%	119,046	205,081	
2019	Average	10,313	334,715	345,028		366,125	315,561	681,686		121,550	203,671
2020	JAN	10,201	325,866	336,067	-6.3%	358,028	301,901	659,929	-7.4%	117,898	201,955
	FEB	10,245	326,468	336,713	0.4%	358,670	302,524	661,194	0.5%	117,775	201,863
	MAR	10,328	324,689	335,017	-4.8%	357,989	299,375	657,364	-5.8%	117,369	201,521
	APR	11,112	337,037	348,149	0.3%	373,744	309,095	682,839	-0.6%	118,173	204,375
	MAY	11,513	353,998	365,511	5.2%	394,281	323,636	717,917	4.4%	119,744	208,152
	JUN	11,522	358,302	369,824	6.7%	398,959	326,357	725,316	5.9%	120,137	209,224
	JUL	11,336	364,797	376,133	9.4%	405,652	329,166	734,818	8.1%	120,881	211,115
	AUG	11,044	373,293	384,337	10.8%	414,644	333,705	748,349	9.0%	118,173	204,375
	SEP	10,928	384,063	394,991	15.7%	426,710	342,621	769,331	14.1%	122,341	214,255
	OCT	10,605	393,716	404,321	19.5%	437,538	350,440	787,978	18.3%	123,068	216,012
	NOV	10,335	395,876	406,211	18.7%	440,136	350,631	790,767	17.1%	123,104	216,208
	DEC	10,308	401,212	411,520	20.8%	446,083	354,408	800,491	19.3%	123,498	221,131
2020	Average	10,790	361,610	372,400		401,036	326,988	728,024		120,180	209,182
2021	JAN	10,214	409,050	419,264	24.8%	454,910	360,490	815,400	23.6%	123,751	221,129
	FEB	9,980	413,080	423,060	25.6%	459,801	362,760	822,561	24.4%	123,888	221,585
	MAR	9,632	418,259	427,891	27.7%	465,302	366,223	831,525	26.5%	124,614	222,961
	APR	9,474	423,186	432,660	24.3%	470,412	369,625	840,037	23.0%	125,182	224,256
2021	Average To Date	9,825	415,894	425,719		462,606	364,775	827,381		124,516	222,483

This Table is based on those Households & Persons that received SNAP issuances (benefits) during the month

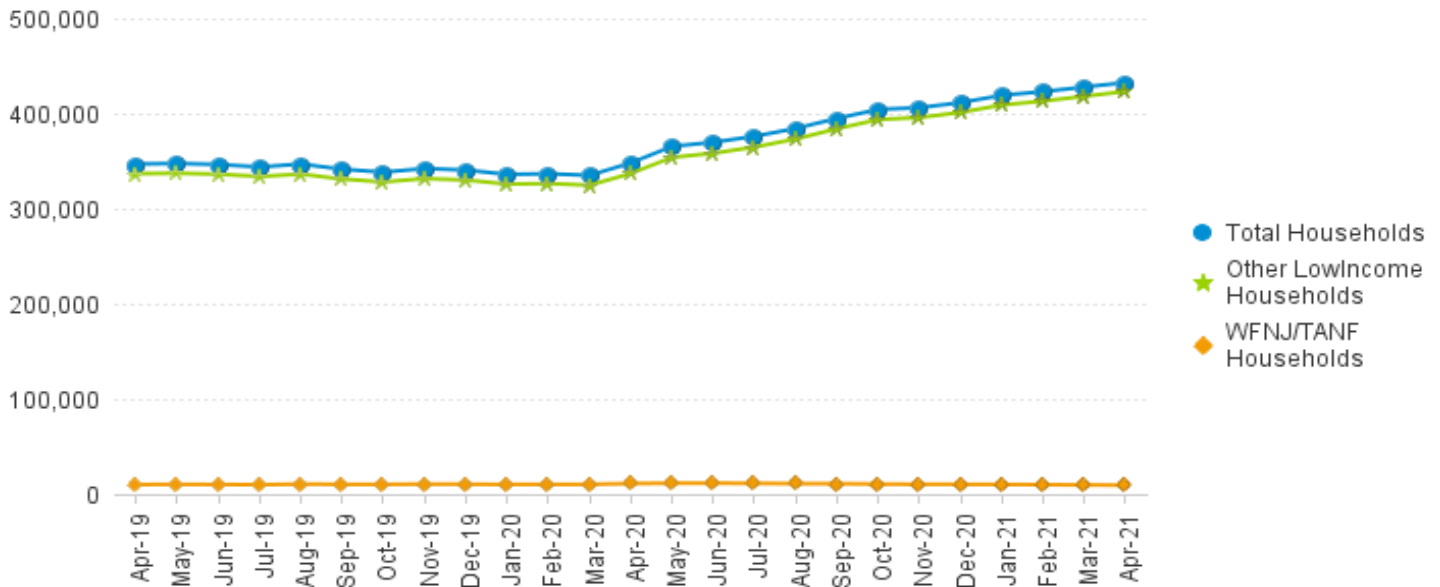
Data is derived from NJ MMIS Shared Data Warehouse.

Effective July 2013 this data query source was converted to the SDW.

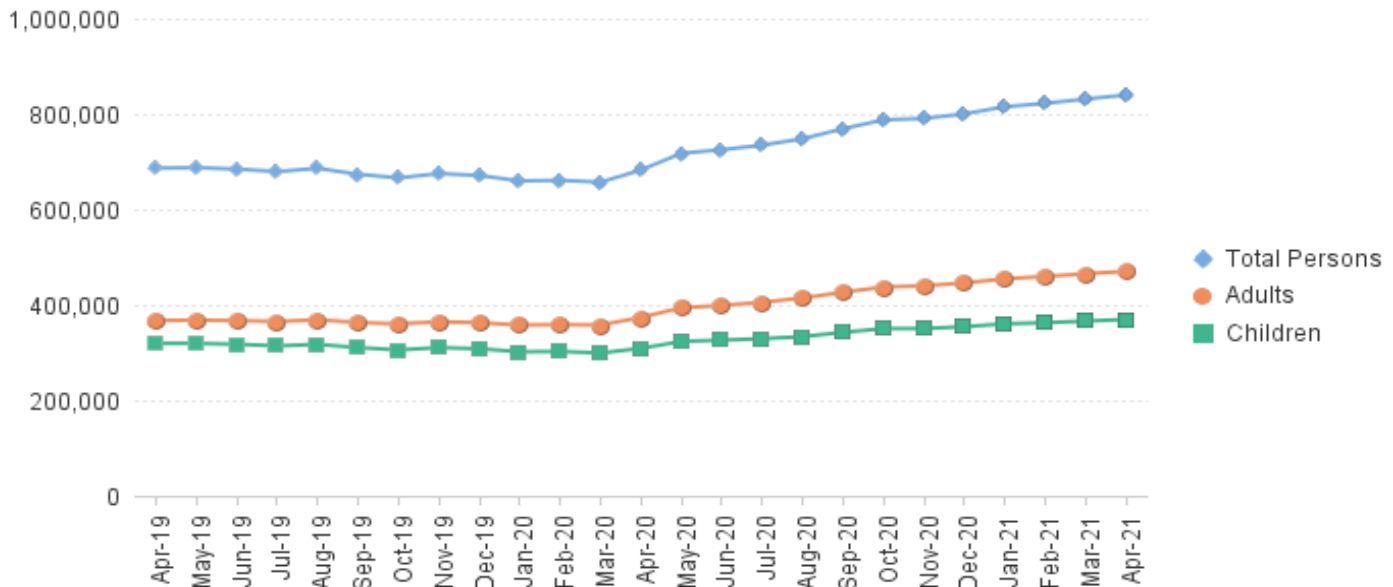
* Age 60+ and People with a disability columns are independent subsets of total persons. An individual might appear in both columns

**TABLE 6: NJ SNAP (FOOD STAMPS)
TRENDS FOR PARTICIPATING HOUSEHOLDS & PERSONS
APRIL 2019 THROUGH APRIL 2021 (STATEWIDE)**

Statewide NJ SNAP Households: APRIL 2019 Through APRIL 2021



Statewide NJ SNAP Persons: APRIL 2019 Through APRIL 2021



Data is derived from NJ MMIS Shared Data Warehouse Issuance files.
Effective July 2013 this data query source was converted to the SDW

TABLE 7 :
NJ SNAP

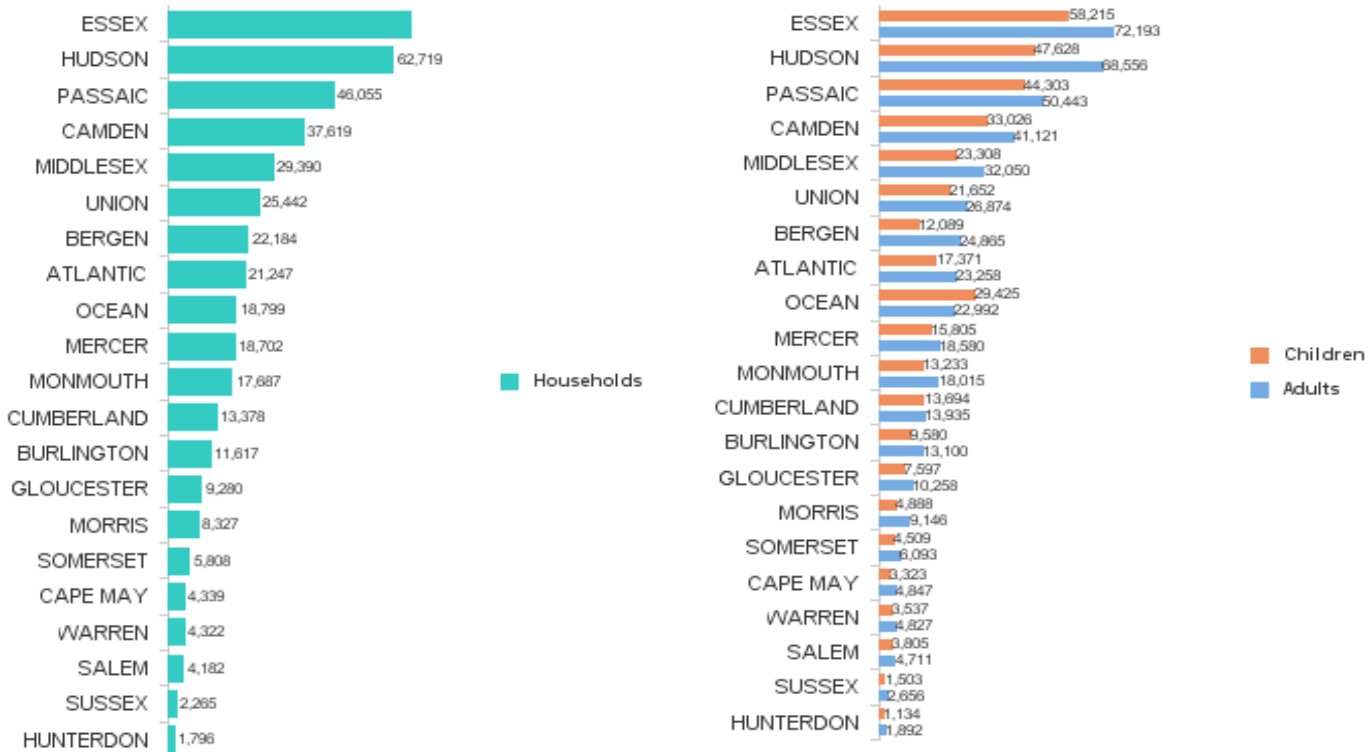
NUMBER OF PARTICIPATING HOUSEHOLDS, PERSONS, ADULTS
AND CHILDREN BY COUNTY FOR APRIL 2021

County	HOUSEHOLDS				PERSONS				Age 60+	People with a disability
	WFNJ/ TANF	Other low income	TOTAL	% Chng (1 Yr)	Adults	Children	TOTAL	% Chng (1 Yr)		
ATLANTIC	598	20,649	21,247	30.0%	23,258	17,371	40,629	28.0%	5,026	10,759
BERGEN	244	21,940	22,184	17.5%	24,865	12,089	36,954	20.5%	12,130	15,566
BURLINGTON	293	11,324	11,617	19.9%	13,100	9,580	22,680	21.1%	2,846	6,828
CAMDEN	1,187	36,432	37,619	25.7%	41,121	33,026	74,147	23.6%	7,874	19,345
CAPE MAY	77	4,262	4,339	15.8%	4,847	3,323	8,170	17.4%	988	2,289
CUMBERLAND	267	13,111	13,378	18.5%	13,935	13,694	27,629	17.3%	2,730	7,098
ESSEX	1,704	65,798	67,502	34.6% Δ	72,193	58,215	130,408	31.2% Δ	15,202	30,225
GLOUCESTER	214	9,066	9,280	5.6% *	10,258	7,597	17,855	3.7% *	2,193	5,957
HUDSON	1,356	61,363	62,719	44.3% Δ	68,556	47,628	116,184	39.4% Δ	18,931	28,835
HUNTERDON	42	1,754	1,796	9.8%	1,892	1,134	3,026	16.1%	557	1,040
MERCER	586	18,116	18,702	27.8%	18,580	15,805	34,385	27.0%	4,273	10,465
MIDDLESEX	509	28,881	29,390	18.3%	32,050	23,308	55,358	18.6%	12,076	17,086
MONMOUTH	162	17,525	17,687	18.1%	18,015	13,233	31,248	17.8%	5,522	9,951
MORRIS	87	8,240	8,327	13.3%	9,146	4,888	14,034	15.7%	4,066	5,327
OCEAN	302	18,497	18,799	15.9%	22,992	29,425	52,417	19.1%	5,171	10,326
PASSAIC	1,037	45,018	46,055	7.3% *	50,443	44,303	94,746	7.1% *	13,509	21,014
SALEM	103	4,079	4,182	9.3%	4,711	3,805	8,516	9.4%	840	2,342
SOMERSET	165	5,643	5,808	12.2%	6,093	4,509	10,602	14.1%	2,088	3,429
SUSSEX	25	2,240	2,265	5.4% *	2,656	1,503	4,159	6.8% *	719	1,614
UNION	398	25,044	25,442	36.6% Δ	26,874	21,652	48,526	34.1% Δ	7,435	12,315
WARREN	118	4,204	4,322	24.6%	4,827	3,537	8,364	27.0%	1,006	2,445
NJ TOTAL	9,474	423,186	432,660	24.3%	470,412	369,625	840,037	23.0%	125,182	224,256

Δ=higher caseload % change

*=lower caseload % change

Total NJ SNAP Recipients
APRIL 2021 by County



Data is derived from NJ MMIS Shared Data Warehouse.

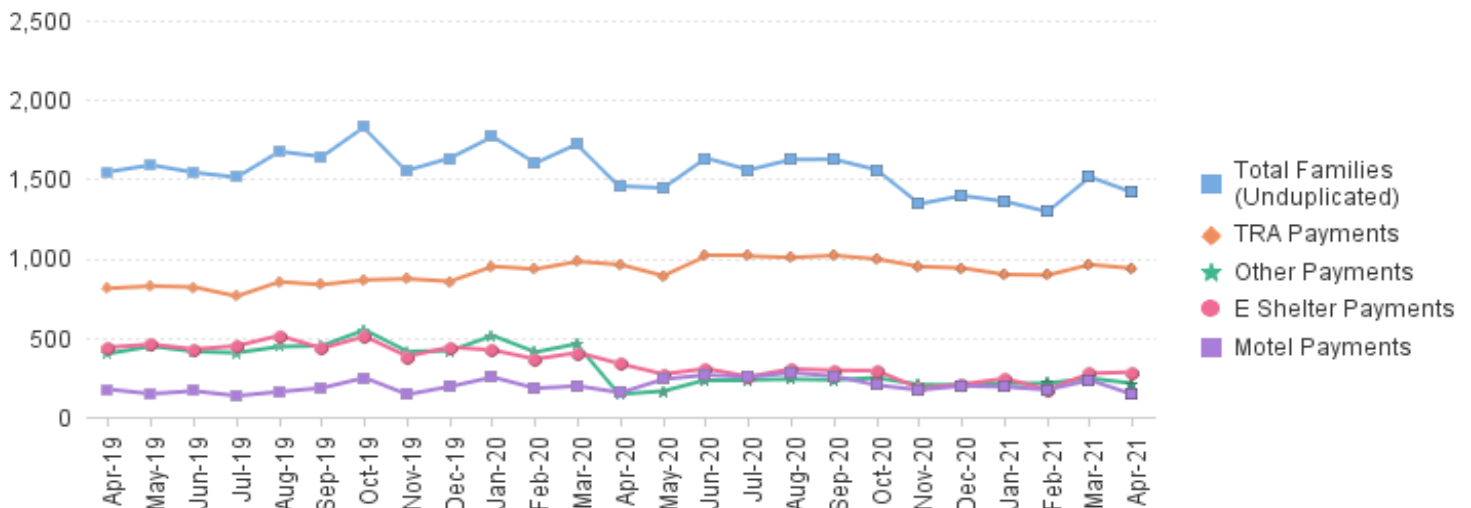
Effective July 2013 this data query source was converted to the SDW.

* Age 60+ and People with a disability columns are independent subsets of total persons. An individual might appear in both columns.

TABLE 8 : EMERGENCY ASSISTANCE (STATEWIDE) TOTAL NUMBER OF ELIGIBLE FAMILIES RECEIVING EMERGENCY ASSISTANCE PAYMENTS APRIL 2019 THROUGH APRIL 2021 - STATEWIDE

		Total WFNJ/EA Families (Undupl)		Temp Rent Asst. Payments (Undupl)		Motel Housing Payments (Undupl)		Shelter/Transitional Housing Payments (Undupl)		Other WFNJ/EA Payments (Undupl)	
			% CHNG (1 YR)		% CHNG (1 YR)		% CHNG (1 YR)		% CHNG (1 YR)		% CHNG (1 YR)
2019	APR	1,546	-13.9%	811	-16.6%	174	14.5%	439	-11.5%	400	-9.7%
	MAY	1,588	-9.4%	825	-10.2%	146	0.0%	458	-7.1%	446	1.1%
	JUN	1,541	-8.1%	819	-7.7%	164	36.7%	427	-9.7%	413	-0.5%
	JUL	1,511	-9.3%	761	-11.6%	133	-28.1%	448	-0.7%	405	-9.4%
	AUG	1,673	3.1%	852	-0.6%	159	14.4%	513	16.3%	443	0.0%
	SEP	1,641	6.8%	834	4.4%	183	-2.7%	433	20.3%	449	7.2%
	OCT	1,830	12.8%	864	6.1%	247	30.0%	508	17.6%	549	16.8%
	NOV	1,555	-3.7%	871	2.2%	142	-11.3%	382	-16.2%	413	-1.0%
	DEC	1,632	0.7%	855	6.2%	192	-14.3%	440	-0.9%	417	-1.9%
2019 Average		1,578		827		164		427		438	
2020	JAN	1,767	15.7%	949	13.8%	251	59.9%	422	16.9%	513	2.6%
	FEB	1,600	15.1%	932	23.6%	181	20.7%	365	24.6%	409	-4.7%
	MAR	1,723	14.5%	980	16.3%	195	62.5%	406	-3.1%	462	19.4%
	APR	1,455	-5.9%	960	18.4%	153	-12.1%	334	-23.9%	144	-64.0%
	MAY	1,444	-9.1%	890	7.9%	238	63.0%	270	-41.0%	163	-63.5%
	JUN	1,632	5.9%	1,014	23.8%	265	61.6%	305	-28.6%	234	-43.3%
	JUL	1,557	3.0%	1,014	33.2%	251	88.7%	254	-43.3%	234	-42.2%
	AUG	1,623	-3.0%	1,005	18.0%	279	75.5%	303	-40.9%	238	-46.3%
	SEP	1,624	-1.0%	1,018	22.1%	258	41.0%	294	-32.1%	234	-47.9%
	OCT	1,558	-14.9%	996	15.3%	201	-18.6%	292	-42.5%	247	-55.0%
	NOV	1,343	-13.6%	948	8.8%	170	19.7%	180	-52.9%	204	-50.6%
	DEC	1,395	-14.5%	939	9.8%	196	2.1%	206	-53.2%	201	-51.8%
2020 Average		1,560		970		220		303		274	
2021	JAN	1,359	-23.1%	898	-5.4%	190	-24.3%	242	-42.7%	210	-59.1%
	FEB	1,294	-19.1%	894	-4.1%	172	-5.0%	174	-52.3%	213	-47.9%
	MAR	1,513	-12.2%	960	-2.0%	232	19.0%	275	-32.3%	244	-47.2%
	APR	1,415	-2.7%	937	-2.4%	142	-7.2%	283	-15.3%	212	47.2%
2021 Average To Date		1,395		922		184		244		220	

NJ STATEWIDE Families Receiving Emergency Assistance APRIL 2019 THROUGH APRIL 2021



WFNJ/EA data is derived from NJ MMIS Shared Data Warehouse. Effective July 2013 this data query source was converted to the SDW.

* Effective Feb '11 Transitional Housing Payments were removed from 'Other EA Payments' and added to 'Shelter Payments'.

TABLE 9 : EMERGENCY ASSISTANCE (BY COUNTY) TOTAL NUMBER OF ELIGIBLE FAMILIES RECEIVING EMERGENCY ASSISTANCE PAYMENTS BY COUNTY (UNDUPLICATED CASES) FOR APRIL 2021

County	TOTAL	%	Temp Rent Asst. Payments (Undupl)	Motel Housing Payments (Undupl)	Shelter/Transitional Housing Payments (Undupl)	Other WFNJ/EA Payments (Undupl)	SSI Recipients Receiving EA **
	WFNJ/EA Families (Undupl)	CHNG From APR 20					
ATLANTIC	67	-28.7%	60	4	0	10	51
BERGEN	50	-31.5%	27	0	18	8	49
BURLINGTON	55	25.0% Δ	8	3	45	3	58
CAMDEN	42	13.5%	22	10	9	4	33
CAPE MAY	18	-5.3%	7	11	0	2	11
CUMBERLAND	1	-50.0% *	0	0	1	0	0
ESSEX	158	-35.5%	47	0	109	6	3
GLOUCESTER	12	-29.4%	6	3	2	3	6
HUDSON	188	22.9%	164	2	17	38	35
HUNTERDON	7	-36.4%	6	0	0	1	14
MERCER	80	-21.6%	51	15	6	20	61
MIDDLESEX	138	79.2% Δ	92	31	4	45	45
MONMOUTH	19	-40.6% *	2	0	17	0	39
MORRIS	12	-47.8% *	10	2	0	0	4
OCEAN	105	28.0% Δ	91	15	0	17	17
PASSAIC	261	4.0%	218	7	27	23	20
SALEM	1	0%	0	0	0	1	0
SOMERSET	76	7.0%	60	4	10	14	66
SUSSEX	0	0%	0	0	0	0	1
UNION	109	7.9%	54	33	17	15	114
WARREN	16	-5.9%	12	2	1	2	1
NJ Total	1,415	-2.7%	937	142	283	212	628

Δ=higher caseload % change

*=lower caseload % change

** SSI-EA includes pay codes 22 and 24, data is derived from NJ Division of Family Development FAMIS Report #FM430-03A

WFNJ/EA data is derived from NJ MMIS Shared Data Warehouse.

Effective July 2013 this data query source was converted to the SDW.

**Number WFNJ Families Receiving EA by County
APRIL 2021**

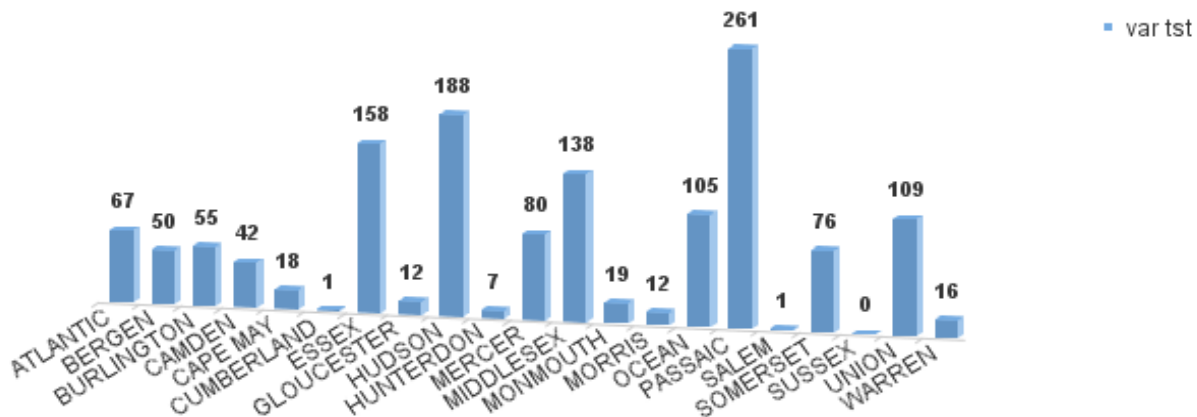


TABLE 10: GENERAL ASSISTANCE PROGRAM
NUMBER OF EMPLOYABLE AND UNEMPLOYABLE RECIPIENTS AND EMERGENCY ASSISTANCE PAYMENTS - STATEWIDE
APRIL 2019 THROUGH APRIL 2021

	Total Cases				Emergency Assistance Cases					
	Employable	% Chng (1 Yr)	Unemployable	% Chng (1 Yr)	Total	% Chng (1 Yr)	Temporary Assistance	Other GA-EA	Total	% Chng (1 Yr)
2019 APR	4,225	-19.0%	6,250	-12.9%	10,475	-15.5%	921	1,244	2,165	-2.3%
MAY	4,157	-17.9%	6,211	-12.9%	10,368	-15.0%	922	1,923	2,845	31.8%
JUN	4,047	-17.3%	6,147	-12.8%	10,194	-14.7%	920	1,166	2,086	3.5%
JUL	4,050	-15.1%	6,077	-13.0%	10,127	-13.8%	912	1,082	1,994	-1.1%
AUG	4,348	-12.4%	6,261	-13.4%	10,609	-13.0%	885	1,210	2,095	4.5%
SEP	4,228	-5.5%	6,193	-9.4%	10,421	-7.9%	884	1,275	2,159	10.3%
OCT	3,980	-11.1%	6,017	-11.8%	9,997	-11.5%	890	1,319	2,209	11.1%
NOV	3,900	-9.6%	5,988	-9.9%	9,888	-9.8%	878	1,198	2,076	8.1%
DEC	3,918	-4.7%	6,008	-8.3%	9,925	-6.9%	900	1,139	2,039	8.5%
2019 AVERAGE	4,124		6,182		10,306		898	1,223	2,121	
2020 JAN	4,109	-2.5%	5,919	-8.3%	10,028	-6.0%	910	1,216	2,126	11.7%
FEB	4,206	0.1%	5,928	-6.0%	10,134	-3.6%	875	1,132	2,007	5.7%
MAR	4,868	15.5%	5,990	-4.5%	10,858	3.5%	919	1,077	1,996	0.8%
APR	5,587	32.2%	5,862	-6.2%	11,449	9.3%	913	855	1,768	-18.3%
MAY	6,936	66.9%	5,783	-6.9%	12,719	22.7%	929	909	1,838	-35.4%
JUN	7,585	87.4%	5,645	-8.2%	13,230	29.8%	916	1,255	2,171	4.1%
JUL	7,994	97.4%	5,520	-9.2%	13,514	33.4%	905	1,256	2,161	8.4%
AUG	8,119	86.7%	5,261	-16.0%	13,380	26.1%	875	1,188	2,063	-1.5%
SEP	8,176	93.4%	5,127	-17.2%	13,303	27.7%	849	1,333	2,182	1.1%
OCT	8,156	104.9%	4,988	-17.1%	13,144	31.5%	855	1,107	1,962	-11.2%
NOV	8,228	111.0%	4,822	-19.5%	13,050	32.0%	835	884	1,719	-17.2%
DEC	8,540	118.0%	4,691	-21.9%	13,231	33.3%	833	1,111	1,944	-4.7%
2020 AVERAGE	6,875		5,461		12,337		885	1,110	1,995	
2021 JAN	8,978	118.5%	4,553	-23.1%	13,531	34.9%	848	1,240	2,088	-1.8%
FEB	9,089	116.1%	4,407	-25.7%	13,496	33.2%	809	991	1,800	-10.3%
MAR	9,630	97.8%	4,421	-26.2%	14,051	29.4%	819	1,405	2,224	11.4%
APR	9,499	70.0%	4,288	-26.9%	13,787	20.4%	832	1,204	2,036	15.2%
AVERAGE TO DATE	9,299		4,417		13,716		827	1,210	2,037	

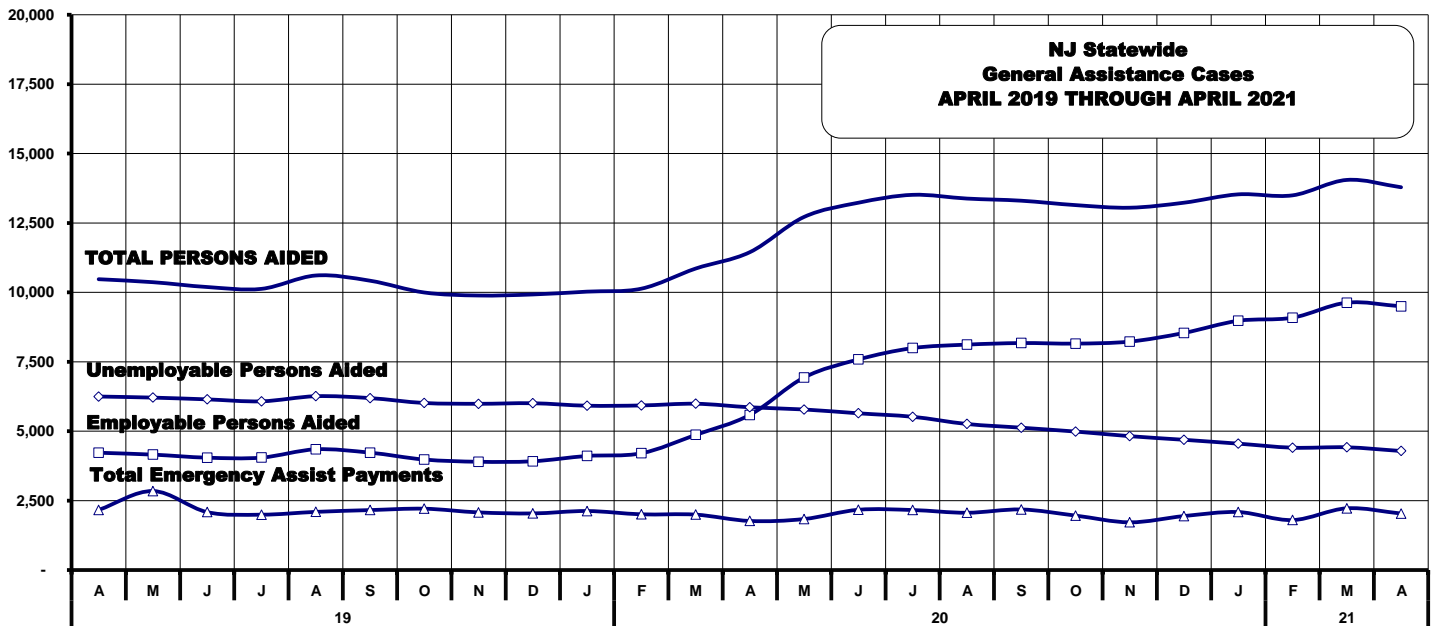


TABLE 11: EMPLOYABLE AND UNEMPLOYABLE CASES AND EMERGENCY ASSISTANCE CASES RECEIVING PAYMENTS BY COUNTY APRIL 2021

PROGRAM	Total Cases						Emergency Assistance Cases			
	Employable	% Chng (1 Yr)	Unemployable	% Chng (1 Yr)	Total	% Chng (1 Yr)	Temporary Rental Assistance	Other GA-EA	Total	% Chng (1 Yr)
ATLANTIC	829	76.0%	221	-17.8%	1,050	41.9% Δ	88	47	135	23.9%
BERGEN	322	21.1%	201	-39.5%	523	-12.5%	80	15	95	-10.4%
BURLINGTON	461	102.2%	214	-38.7%	675	17.0%	17	109	126	-13.7%
CAMDEN	1,205	90.1%	489	-27.1%	1,694	29.8%	43	110	153	34.2%
CAPE MAY	103	4.0%	51	-23.9%	154	-7.2%	23	40	63	0.0%
CUMBERLAND	336	40.6%	102	-47.4%	438	1.2%	0	5	5	-44.4% *
ESSEX	1,021	17.0%	368	-35.1%	1,389	-3.5%	23	138	161	-21.8% *
GLOUCESTER	186	-7.5%	147	-30.0%	333	-19.0% *	3	26	29	16.0%
HUDSON	1,926	230.4%	547	-12.1%	2,473	105.2% Δ	85	100	185	74.5% Δ
HUNTERDON	66	-18.5%	53	-39.1%	119	-29.2% *	14	13	27	-3.6%
MERCER	374	89.8%	296	-25.8%	670	12.4%	51	28	79	9.7%
MIDDLESEX	502	117.3%	283	-19.8%	785	34.4% Δ	91	136	227	124.8% Δ
MONMOUTH	233	77.9%	166	-19.4%	399	18.4%	1	83	84	31.3%
MORRIS	137	5.4%	149	-15.8%	286	-6.8%	50	22	72	-15.3%
OCEAN	347	47.7%	243	-10.3%	590	16.6%	73	45	118	-7.8%
PASSAIC	440	88.0%	351	-28.7%	791	9.0%	54	29	83	-19.4%
SALEM	141	74.1%	60	-25.0%	201	24.8%	1	2	3	-25.0% *
SOMERSET	139	3.0%	67	-23.0%	206	-7.2%	51	35	86	-2.3%
SUSSEX	62	-24.4%	35	-32.7%	97	-27.6% *	0	22	22	0.0%
UNION	509	58.1%	162	-37.0%	671	15.9%	63	161	224	71.0% Δ
WARREN	160	19.4%	83	-30.8%	243	-4.3%	21	38	59	1.7%
NJ TOTAL	9,499	70.0%	4,288	-26.9%	13,787	20.4%	832	1,204	2,036	15.2%

Δ = ↑ Caseload %

* = ↓ Caseload %

Source: NJ Division of Family Development, GA Fiscal Unit

**TABLE 12:
OFFICE OF
CHILD SUPPORT
SERVICES**

**OFFICE OF CHILD SUPPORT SERVICES
QUARTERLY PERFORMANCE REPORT
STATE SUMMARY
TITLE IV-D SOURCE COLLECTION REPORT**

Comparison of Quarter-2 (FFY 2020 vs. FFY 2021)

COLLECTION SOURCE	TOTAL 1/1/2020 - 3/31/2020	% OF TOTAL COLLECTIONS	TOTAL 1/1/2021 - 3/31/2021	% OF TOTAL COLLECTIONS	DOLLAR CHANGE	% CHANGE
FEDERAL TAX	\$18,713,574	6.07%	\$11,587,000	3.94%	\$ (7,126,574)	-38.08%
STATE TAX	\$277,654	0.09%	\$433,038	0.15%	\$ 155,384	55.96%
UIB	\$9,053,362	2.94%	\$34,833,880	11.86%	\$ 25,780,518	284.76%
INC WITHHOLD	\$206,751,521	67.05%	\$183,805,582	62.57%	\$ (22,945,939)	-11.10%
FROM OTHER STATES	\$11,896,305	3.86%	\$12,170,952	4.14%	\$ 274,647	2.31%
ADMIN ENFORCEMENT	\$3,707,465	1.20%	\$1,746,080	0.01%	\$ (1,961,386)	-52.90%
OTHER	\$57,949,892	18.79%	\$49,160,906	16.74%	\$ (8,788,986)	-15.17%
TOTAL COLLECTIONS*	\$308,349,773	100%	\$293,737,438	100%	\$ (14,612,336)	-4.74%
DISBURSED COLLECTIONS**	\$269,789,988		\$260,626,114		\$ (9,163,874)	-3.40%

* Includes collections on both current support and arrears.

** Includes collections on both current support and arrears; also includes money sent to other states.

SOURCE: NJKIDS (Based on Federal Quarterly Report of Collections - OCSE-34A except Disbursed Collections)

Disbursed Collections obtained from Federal Data Report - OCSE-157, which is reported annually to Congress and used in the calculation of incentive dollars earned by each state.

**TABLE 13:
OFFICE OF
CHILD SUPPORT
SERVICES**

**OFFICE OF CHILD SUPPORT SERVICES
STATE SUMMARY
TITLE IV-D PATERNITY ESTABLISHMENT REPORT**

Comparison of April (FFY 20 vs. FFY 21)

County	APRIL 2020			APRIL 2021			Increase or Decrease (-) from FFY 2020 to FFY 2021
	Total Children Born Out of Wedlock*	Number of Paternities Established	Percent of Paternities Established	Total Children Born Out of Wedlock*	Number of Paternities Established	Percent of Paternities Established	
Atlantic	6,275	6,254	99.7%	5,780	5,768	99.8%	0.1%
Bergen	3,211	3,146	98.0%	2,903	2,859	98.5%	0.5%
Burlington	4,931	4,834	98.0%	4,487	4,385	97.7%	-0.3%
Camden	15,777	15,287	96.9%	14,472	14,168	97.9%	1.0%
Cape May	1,255	1,241	98.9%	1,132	1,121	99.0%	0.1%
Cumberland	6,592	6,527	99.0%	6,144	6,074	98.9%	-0.2%
Essex	25,340	23,976	94.6%	22,474	21,419	95.3%	0.7%
Gloucester	4,386	4,364	99.5%	3,991	3,948	98.9%	-0.6%
Hudson	10,144	9,717	95.8%	9,129	8,782	96.2%	0.4%
Hunterdon	270	269	99.6%	227	226	99.6%	-0.1%
Mercer	7,126	6,898	96.8%	6,347	6,142	96.8%	0.0%
Middlesex	6,408	6,292	98.2%	5,813	5,663	97.4%	-0.8%
Monmouth	5,143	5,014	97.5%	4,539	4,397	96.9%	-0.6%
Morris	1,279	1,275	99.7%	1,145	1,129	98.6%	-1.1%
Ocean	4,848	4,724	97.4%	4,444	4,342	97.7%	0.3%
Passaic	10,419	10,086	96.8%	9,202	8,905	96.8%	0.0%
Salem	2,701	2,625	97.2%	2,508	2,415	96.3%	-0.9%
Somerset	1,430	1,397	97.7%	1,255	1,221	97.3%	-0.4%
Sussex	539	537	99.6%	460	456	99.1%	-0.5%
Union	10,154	9,711	95.6%	9,377	8,949	95.4%	-0.2%
Warren	934	926	99.1%	833	823	98.8%	-0.3%
NJ TOTALS	129,162	125,100	96.9%	116,662	113,192	97.0%	0.2%

SOURCE: NJKIDS (Based on Federal Performance Measures - OCSE-157)

* Information on Out of Wedlock Births obtained from NJ Bureau of Vital Statistics

**TABLE 14:
OFFICE OF
CHILD SUPPORT
SERVICES**

**OFFICE OF CHILD SUPPORT SERVICES
STATE SUMMARY
TITLE IV-D REPORT OF CASES WITH ORDERS**
Comparison of April (FFY 20 vs. FFY 21)

County	APRIL 2020			APRIL 2021			Increase or Decrease (-) from FFY 2020 to FFY 2021
	Total Cases	Cases with Orders	% of Cases with Orders	Total Cases	Cases with Orders	% of Cases with Orders	
Atlantic	11,561	10,516	91.0%	10,605	9,875	93.1%	2.2%
Bergen	11,599	11,245	96.9%	10,808	10,586	97.9%	1.0%
Burlington	12,781	11,874	92.9%	11,744	11,115	94.6%	1.7%
Camden	27,886	25,938	93.0%	25,946	24,689	95.2%	2.1%
Cape May	2,994	2,757	92.1%	2,749	2,580	93.9%	1.8%
Cumberland	11,669	11,152	95.6%	10,927	10,546	96.5%	0.9%
Essex	41,462	34,735	83.8%	36,770	32,339	87.9%	4.2%
Gloucester	10,118	9,696	95.8%	9,413	9,109	96.8%	0.9%
Hudson	20,022	17,492	87.4%	18,174	16,367	90.1%	2.7%
Hunterdon	1,402	1,319	94.1%	1,291	1,216	94.2%	0.1%
Mercer	13,421	12,069	89.9%	12,088	11,145	92.2%	2.3%
Middlesex	16,900	15,866	93.9%	15,608	14,775	94.7%	0.8%
Monmouth	13,382	12,732	95.1%	12,129	11,641	96.0%	0.8%
Morris	5,642	5,496	97.4%	5,263	5,133	97.5%	0.1%
Ocean	14,336	13,719	95.7%	13,223	12,784	96.7%	1.0%
Passaic	20,295	16,492	81.3%	17,550	15,514	88.4%	7.1%
Salem	4,169	3,983	95.5%	3,826	3,678	96.1%	0.6%
Somerset	4,526	4,268	94.3%	4,092	3,896	95.2%	0.9%
Sussex	2,556	2,492	97.5%	2,353	2,323	98.7%	1.2%
Union	17,703	16,779	94.8%	16,552	15,844	95.7%	0.9%
Warren	2,947	2,738	92.9%	2,653	2,539	95.7%	2.8%
NJ TOTALS	267,371	243,358	91.0%	243,764	227,694	93.4%	2.4%

SOURCE: NJKIDS (Based on Federal Performance Measures - OCSE-157)

**TABLE 15:
OFFICE OF
CHILD SUPPORT
SERVICES**

**OFFICE OF CHILD SUPPORT SERVICES
STATE SUMMARY
TITLE IV-D COLLECTIONS ON CURRENT SUPPORT**

Comparison of April (FFY 20 vs. FFY 21)

County	APRIL 2020			APRIL 2021			Increase or Decrease (-) from FFY 2020 to FFY 2021
	Total Current Support Due	Total Current Support Distributed	Total Collection Rate	Total Current Support Due	Total Current Support Distributed	Total Collection Rate	
Atlantic	\$3,620,583	\$2,230,193	61.6%	\$3,557,007	\$2,398,868	67.4%	5.8%
Bergen	\$8,299,238	\$5,949,436	71.7%	\$7,811,444	\$6,040,842	77.3%	5.6%
Burlington	\$5,585,468	\$3,707,801	66.4%	\$5,268,392	\$3,796,257	72.1%	5.7%
Camden	\$7,751,361	\$4,428,327	57.1%	\$7,562,993	\$4,744,742	62.7%	5.6%
Cape May	\$1,063,429	\$675,937	63.6%	\$1,044,583	\$740,075	70.8%	7.3%
Cumberland	\$2,990,165	\$1,666,193	55.7%	\$2,886,681	\$1,775,489	61.5%	5.8%
Essex	\$10,523,099	\$5,869,509	55.8%	\$10,022,870	\$6,245,321	62.3%	6.5%
Gloucester	\$4,102,496	\$2,603,391	63.5%	\$3,977,503	\$2,756,844	69.3%	5.9%
Hudson	\$7,064,403	\$4,391,748	62.2%	\$6,825,400	\$4,780,583	70.0%	7.9%
Hunterdon	\$1,194,922	\$955,860	80.0%	\$1,132,750	\$916,589	80.9%	0.9%
Mercer	\$4,013,478	\$2,351,278	58.6%	\$3,778,850	\$2,505,977	66.3%	7.7%
Middlesex	\$7,485,754	\$4,930,374	65.9%	\$7,080,888	\$5,103,158	72.1%	6.2%
Monmouth	\$7,114,908	\$4,975,892	69.9%	\$6,628,412	\$4,975,875	75.1%	5.1%
Morris	\$4,345,112	\$3,071,883	70.7%	\$4,077,840	\$3,058,179	75.0%	4.3%
Ocean	\$6,393,451	\$4,419,514	69.1%	\$6,091,517	\$4,539,936	74.5%	5.4%
Passaic	\$6,353,924	\$3,714,894	58.5%	\$6,100,676	\$4,044,558	66.3%	7.8%
Salem	\$1,074,152	\$623,222	58.0%	\$1,054,933	\$655,682	62.2%	4.1%
Somerset	\$3,012,365	\$2,335,007	77.5%	\$2,820,038	\$2,383,647	84.5%	7.0%
Sussex	\$1,746,299	\$1,301,697	74.5%	\$1,654,743	\$1,294,323	78.2%	3.7%
Union	\$6,736,591	\$4,336,056	64.4%	\$6,468,083	\$4,599,230	71.1%	6.7%
Warren	\$1,267,573	\$885,112	69.8%	\$1,180,162	\$877,871	74.4%	4.6%
NJ TOTALS	\$101,738,770	\$65,423,324	64.3%	\$97,025,766	\$68,234,047	70.3%	6.0%

SOURCE: NJKIDS (Based on Federal Performance Measures - OCSE-157)

**TABLE 16:
OFFICE OF
CHILD SUPPORT
SERVICES**

**OFFICE OF CHILD SUPPORT SERVICES
STATE SUMMARY
TITLE IV-D CASES ARREARS COLLECTION REPORT**

Comparison of April (FFY 20 vs. FFY 21)

County	APRIL 2020			APRIL 2021			Increase or Decrease (-) from FFY 2020 to FFY 2021
	Total Cases with Arrears	Total Amount Collected	Average Arrears Collection per Case	Total Cases with Arrears	Total Amount Collected	Average Arrears Collection per Case	
Atlantic	6,817	\$587,624	\$86.20	6,505	\$1,071,879	164.7777095	\$78.58
Bergen	7,285	\$936,934	\$128.61	6,707	\$1,355,120	202.045624	\$73.43
Burlington	7,930	\$793,838	\$100.11	7,270	\$1,441,560	198.2888583	\$98.18
Camden	15,687	\$1,469,927	\$93.70	15,467	\$2,627,031	169.8474817	\$76.14
Cape May	1,835	\$216,496	\$117.98	1,767	\$337,187	190.8245614	\$72.84
Cumberland	6,939	\$531,346	\$76.57	6,831	\$1,105,824	161.8831796	\$85.31
Essex	21,481	\$1,997,562	\$92.99	20,421	\$3,903,512	191.1518535	\$98.16
Gloucester	6,458	\$641,627	\$99.35	6,072	\$996,410	164.0991436	\$64.75
Hudson	11,901	\$1,120,827	\$94.18	10,935	\$1,887,682	172.6275263	\$78.45
Hunterdon	795	\$102,364	\$128.76	742	\$196,576	264.9272237	\$136.17
Mercer	7,903	\$849,923	\$107.54	7,526	\$1,369,464	181.9643901	\$74.42
Middlesex	10,420	\$1,264,458	\$121.35	9,694	\$1,941,964	200.3263875	\$78.98
Monmouth	8,234	\$1,082,220	\$131.43	7,587	\$1,443,202	190.220377	\$58.79
Morris	3,674	\$500,562	\$136.24	3,381	\$706,215	208.877551	\$72.63
Ocean	8,662	\$1,109,831	\$128.13	8,086	\$1,375,490	170.1075934	\$41.98
Passaic	10,978	\$939,948	\$85.62	10,540	\$1,895,812	179.8683112	\$94.25
Salem	2,427	\$217,367	\$89.56	2,295	\$360,685	157.16122	\$67.60
Somerset	2,862	\$347,163	\$121.30	2,490	\$513,922	206.3943775	\$85.09
Sussex	1,631	\$206,591	\$126.67	1,522	\$289,347	190.109724	\$63.44
Union	10,858	\$1,200,465	\$110.56	10,238	\$1,933,634	188.8683337	\$78.31
Warren	1,676	\$153,686	\$91.70	1,586	\$260,638	164.3366961	\$72.64
NJ TOTALS	156,453	\$16,270,759	\$104.00	147,662	\$27,013,154	\$182.94	\$78.94

SOURCE: OCSE-157 Child Support Enforcement Annual Data Report

Table 17

WORK FIRST NEW JERSEY STATISTICAL SUMMARY

WFNJ

APRIL 2021

COUNTY	EMPLOYMENT DIRECTED ACTIVITIES			EMPLOYED OPEN (WFNJ RECIPIENT)	SUPPORT SERVICES ON ACTIVE CASE		CLOSED FOR EMPLOYMENT THIS MONTH	POST ASSISTANCE CHILD CARE
	CWEP	ALL OTHER TRAINING	JOB SEARCH		CHILD CARE	TRAINING REL. EXPENSES		
ATLANTIC	0	19	7	16	3	40	6	16
BERGEN	1	5	0	3	15	0	1	8
BURLINGTON	0	5	0	1	4	0	2	18
CAMDEN	28	127	0	15	30	0	5	19
CAPE MAY	0	2	0	3	3	2	0	5
CUMBERLAND	0	33	0	2	1	2	2	2
ESSEX	21	145	2	17	29	25	7	57
GLOUCESTER	0	6	0	7	2	0	0	9
HUDSON	4	80	2	23	37	4	18	25
HUNTERDON	0	0	0	1	1	0	0	0
MERCER	31	51	11	24	33	2	9	32
MIDDLESEX	0	25	2	19	7	0	2	36
MONMOUTH	0	11	3	7	17	0	0	23
MORRIS	0	15	0	2	3	0	1	5
OCEAN	3	14	7	9	10	0	3	17
PASSAIC	0	29	0	16	27	6	9	7
SALEM	0	4	0	2	2	0	2	0
SOMERSET	0	2	0	6	15	0	2	12
SUSSEX	0	2	0	1	1	0	0	1
UNION	0	29	0	3	11	1	1	6
WARREN	0	11	0	3	3	0	1	2
STATE	88	615	34	180	254	82	71	300

Data is derived from NJ Division of Family Development's FAMIS Reports RM064-01 & RM703-51, AdHoc Reports 5549 & 5598 and SDW Report WR00022WZ_CC

**DIVISION OF FAMILY DEVELOPMENT CURRENT PROGRAM STATISTICS
APRIL 2021**

ACRONYMS

EMERGENCY ASSISTANCE (EA) - Payments to those eligible for WFNJ/TANF or WFNJ/GA, authorized during the 30 consecutive days immediately following the emergency (defined as a substantial loss of shelter, food, clothing, or household furnishings by fire, flood or other similar disaster) or if eligible individual or family is in an imminent or actual state of homelessness.

NJ SNAP - Formerly the Food Stamp Program, now known as NJ SNAP (NJ Supplemental Nutrition Assistance Program) authorized by Congress as a nutritional supplement program to provide low income households with more food of greater variety and better nutrition. Program eligibility is based on household income, resources, and expenses for medical, shelter, and dependent care. CWA staff refers certain recipients to the New Jersey Department of Labor for participation in the Food Stamp Employment

FAMIS: Family Assistance Management Information System

GAAS: General Assistance Automated System

NJKIDS: New Jersey Kids Deserve Support (Child Support Information Management System)

NJ MMIS SHARED DATA WAREHOUSE: The Shared Data Warehouse (SDW) is the repository for New Jersey's DFD and Medicaid data. Since 2003, OptumInsight has administered the SDW and provided access to the data through a reporting tool known as Business Objects.

OMEGA: Online Management of Economic Goal Achievement

SSI-EA: Supplemental Security Income-Emergency Assistance

WFNJ: Work First New Jersey - Fully implemented July 1, 1997, this is New Jersey's welfare reform program which responds to the requirements of the Federal Personal Responsibility and Work Opportunity Reconciliation Act (**PRWORA**) of 1996. PRWORA established Temporary Assistance for Needy Families (**TANF**) as the replacement for AFDC cash assistance. WFNJ includes two segments, **WFNJ/TANF** for families with children, and **WFNJ/GA** (General Assistance) for single adults and couples without dependent children. WFNJ emphasizes achieving self-sufficiency and limits lifetime

**DIVISION OF FAMILY DEVELOPMENT CURRENT PROGRAM STATISTICS
APRIL 2021**

EXPLANATORY NOTES

The Department of Human Services Division of Family Development provides basic income and an opportunity to achieve self-sufficiency for individuals and families served by the Division's programs. The Division provides leadership, direction and supervision to those public agencies responsible for administering those programs and plans for and develops policies to promote self-sufficiency.

WFNJ STATISTICAL SUMMARY (TABLE 17)

Employment Directed Activities (EDA) - From Activities Summary Report (OMEGA report # RM064). Unduplicated count of persons participating in Community Work Experience Program (CWEP), All Other Training, or Job Search.

Number of Persons Employed This Month, Still Receiving TANF - Individuals with open "empl" activity on OMEGA. Ad hoc report.

Participants Receiving Child Care Services - From Issuance Disbursement Summary (OMEGA report # RM703). Total number of active participants who show receipt of Child Care.

Number of Persons Closed on FAMIS Due to Employment - From FAMIS report #5549-RM-2

Post TANF and Receiving Child Care - Persons no longer in receipt of TANF but still receiving child care. From Share Data Warehouse Child Care case count based on Child Care payments (SDW report WR00022WZ_CC).