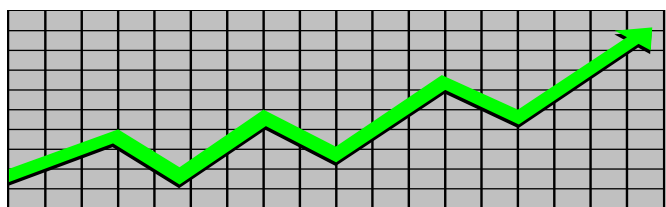


State of New Jersey
Department of Human Services
Division of Family Development

CURRENT PROGRAM STATISTICS



August 2022
Natasha Johnson, Assistant Commissioner

TABLE OF CONTENTS

HIGHLIGHTS:

WFNJ/TANF..... ii
NJ SNAP..... ii
EMERGENCY ASSISTANCE..... ii
GENERAL ASSISTANCE..... iii
 GA Emergency Assistance..... iii
 GA Program..... iii
CHILD SUPPORT SERVICES..... iii
WORK FIRST NEW JERSEY (WFNJ)..... iii
STATISTICS- BY STATE & COUNTY..... 1
 Table 1: WFNJ/TANF Families & Persons (NJ Statewide) August 2020 to 2022..... 1
 Table 2: WFNJ/TANF Families (by County)- August 2022..... 2
 Table 2B: WFNJ/TANF Persons, Adults, & Children (by County)- August 2022..... 3
 Table 3: TANF Work Participation Rates Over 12 Month Period (by County)- August 2022..... 4
 Table 4: TANF Work Participation Rates Over 12 Month Period (NJ Statewide)- August 2022..... 5
 Table 5: NJ SNAP Households/Persons (NJ Statewide) August 2020 to 2022..... 6
 Table 6: NJ SNAP Recipient Trends (NJ Statewide) August 2020 to 2022..... 7
 Table 7: NJ SNAP Households/Persons (by County)- August 2022..... 8
 Table 8: Emergency Assistance Program (NJ Statewide) August 2020 to 2022..... 9
 Table 9: Emergency Assistance Program (by County)- August 2022..... 10
 Table 10: General Assistance Program (NJ Statewide) August 2020 to 2022..... 11
 Table 11: General Assistance Program (by County)- August 2022..... 12
 Table 12: Child Support Services Distributions (NJ Statewide) FFY 2022..... 13
 Table 13: Child Support Services Paternities Established- August 2022..... 14
 Table 14: Child Support Services Cases With Orders- August 2022..... 15
 Table 15: Child Support Services Collections On Current Support- August 2022..... 16
 Table 16: Child Support Services Cases With Payments On Arrears- August 2022..... 17
 Table 17: WFNJ Statistical Summary- August 2022..... 18
ACRONYMS..... 19
EXPLANATORY NOTES..... 20
 WFNJ Statistical Summary (Table 17)..... 20

DIVISION OF FAMILY DEVELOPMENT CURRENT PROGRAM STATISTICS AUGUST 2022

Each month the Division of Family Development publishes its program statistics for: WFNJ/TANF, NJ SNAP, Emergency Assistance, General Assistance, and Child Support Services. When possible, information is provided separately for children and adults. Many tables also provide trend data with information broken down by county for readers to consider. This report is compiled and prepared by The Bureau of Research & Reporting.

WFNJ/TANF

- As of the end of August, the TANF caseload had increased by 1833 cases, from 9,191 in August 2021 to 11,024 in August 2022; an increase of 19.9%.
- The counties with caseloads that increased the most since August 2021 were Union (44.4%), Salem (42.7%), and Monmouth (41.7%).
- The counties with caseloads that decreased the most since August 2021 were Warren (-16.2%), Hunterdon (-11.9%), and Essex (-2.2%).
- Of the WFNJ/TANF cases, 2,687 or 24.4% were child-only in August 2022.
- The counties with the most child-only cases were Camden (480), Hudson (309), and Essex (281).
- Hudson (4,712), Camden (4,121), and Essex (3,525) counties had the greatest number of persons receiving TANF in August 2022.

NJ SNAP (Formerly FOOD STAMPS)

- In August 2022, there were 434,352 households receiving NJ SNAP benefits. The number of NJ SNAP households decreased by 17,051 or -3.8%, since August 2021.
- There were 876,595 persons receiving NJ SNAP benefits as of August 2022; an increase of 2,912 or 0.3% since August 2021.
- The counties having the highest SNAP caseload increase since August 2021 were Hunterdon (10.7%), Ocean (7.5%), and Morris (3.6%).
- The counties having the highest SNAP caseload decrease since August 2021 were Hudson (-14.2%), Passaic (-13.3%), and Union (-7.6%).

EMERGENCY ASSISTANCE

- There were 1,509 TANF families receiving Emergency Assistance (EA) in August 2022; an increase of 210 or 16.2% since August 2021.
- In August 2022, EA payments were made for 662 SSI recipients.

**DIVISION OF FAMILY DEVELOPMENT CURRENT PROGRAM STATISTICS
AUGUST 2022**

- There were 2,087 GA cases with Emergency Assistance payments in August 2022; an increase of 243 or 13.2% since August 2021.
- The counties that showed the highest percent increase in Emergency Assistance payments were Somerset (517.6%), Salem (250%), and Cumberland (100%).
- The counties that showed the highest percent decrease in Emergency Assistance payments were Gloucester (-66.7%), Sussex (-37.5%), and Ocean (-36.8%).

GENERAL ASSISTANCE

- The total numbers of cases receiving GA has increased from 13,102 to 13,127 since August 2021; an increase of 0.2%.
- There were 9,785 Employable GA and 3,342 Unemployable GA cases in August 2022.
- The counties that showed a percent increase for GA cases were Hunterdon (52.6%), Somerset (43.9%), and Cape May (39.8%) since August 2021.
- The counties that showed the highest percent decrease for GA cases since August 2021 were Hudson (-42.8%), Warren (-20.5%), and Passaic (-20.4%).
- In August 2022, GA cases showed a -19.53% decrease since July 2022.

CHILD SUPPORT SERVICES (QUARTERLY REPORT)

- The total collection for the Child Support Services Program was about \$279 million from April 2022 to June 2022; a decrease of -13.4% over the same period from FFY .
- Total distributions decreased -13.1% from June 2021.

WORK FIRST NEW JERSEY (WFNJ)

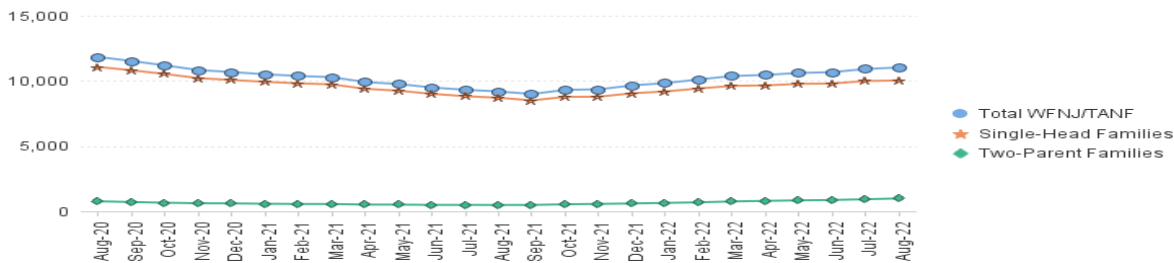
- During the report month of August 2022, there were 517 families in which at least one member was employed and an additional 118 families whose WFNJ assistance cases were closed due to employment - related earnings.
- The three counties with the greatest number of employed active WFNJ recipients were: Hudson (91), Mercer (70), and Essex (65).
- There were 197 former TANF cases receiving post-TANF support in the form of child care assistance.

TABLE 1: WFNJ/TANF PROGRAM

STATEWIDE NUMBER OF APPLICATIONS AND TERMINATIONS DURING AUGUST 2022
 NUMBER OF ELIGIBLE FAMILIES & PERSONS RECEIVING WFNJ/TANF FOR AUGUST 2022

AUGUST 2020 THROUGH AUGUST 2022												
	Cases Added	Cases Closed	Child-Only Cases ‡	Total Single-Head Families	2-Parent Families	Total WFNJ/TANF Families	%CHNG (1 Yr.)	Total Persons	%CHNG (1 Yr.)	Adults	Children	
2020	AUG	410	660	3,665	11,070	768	11,838	10.2%	30,454	13.9%	8,941	21,513
	SEP	475	796	3,603	10,817	711	11,528	7.3%	29,531	10.2%	8,636	20,895
	OCT	534	904	3,564	10,532	659	11,191	7.6%	28,657	9.6%	8,286	20,371
	NOV	419	767	3,470	10,218	617	10,835	-1.1%	27,738	0.3%	7,982	19,756
	DEC	434	595	3,410	10,071	607	10,678	-2.5%	27,371	-1.4%	7,875	19,496
2020	Average	682	724	3,614	10,607	698	11,306		28,973		8,390	20,583
2021	JAN	400	585	3,379	9,932	580	10,512	-1.7%	26,960	-0.6%	7,713	19,247
	FEB	378	504	3,347	9,818	559	10,377	-4.1%	26,520	-3.6%	7,589	18,931
	MAR	397	481	3,311	9,735	557	10,292	-3.9%	26,335	-3.2%	7,538	18,797
	APR	298	704	3,224	9,395	518	9,913	-11.8%	25,276	-12.1%	7,207	18,069
	MAY	264	510	3,209	9,250	513	9,763	-18.0%	24,858	-19.1%	7,067	17,791
	JUN	373	636	3,141	9,008	489	9,497	-21.8%	24,146	-23.0%	6,845	17,301
	JUL	391	590	3,068	8,829	493	9,322	-23.0%	23,785	-23.8%	6,747	17,038
	AUG	415	544	3,029	8,709	482	9,191	-22.4%	23,445	-23.0%	6,644	16,801
	SEP	388	588	2,945	8,507	489	8,996	-22.0%	23,009	-22.1%	6,540	16,469
	OCT	833	564	2,921	8,779	538	9,317	-16.7%	23,888	-16.6%	6,934	16,954
	NOV	656	614	2,816	8,791	568	9,359	-13.6%	24,282	-12.5%	7,111	17,171
	DEC	702	432	2,824	9,054	601	9,655	-9.6%	25,177	-8.0%	7,432	17,745
2021	Average	458	563	3,101	9,151	532	9,683		24,807		7,114	17,693
2022	JAN	667	484	2,796	9,193	645	9,838	-6.4%	25,789	-4.3%	7,687	18,102
	FEB	655	414	2,794	9,424	689	10,113	-2.5%	26,638	0.4%	8,008	18,630
	MAR	715	512	2,804	9,623	756	10,379	0.8%	27,433	4.2%	8,331	19,102
	APR	644	622	2,743	9,656	802	10,458	5.5%	27,749	9.8%	8,517	19,232
	MAY	632	475	2,723	9,777	838	10,615	8.7%	28,183	13.4%	8,730	19,453
	JUN	622	599	2,718	9,802	869	10,671	12.4%	28,287	17.1%	8,822	19,465
	JUL	679	518	2,715	9,998	925	10,923	17.2%	29,043	22.1%	9,133	19,910
	AUG	713	609	2,687	10,037	987	11,024	19.9%	29,453	25.6%	9,324	20,129
2022	Average to date	666	529	2,748	9,689	814	10,503		27,822		8,569	19,253

NJ STATEWIDE
 Eligible Families Receiving WFNJ/TANF
 AUGUST 2020 THROUGH AUGUST 2022

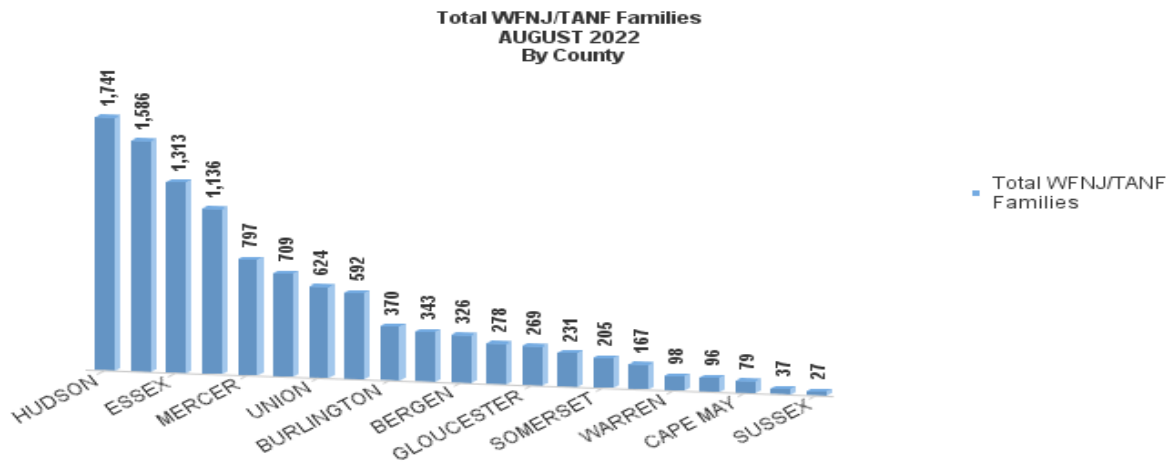


Data is derived from NJ MMIS Shared Data Warehouse Issuance files.
 Effective July 2013 this data query source was converted to the SDW

‡ Child-only cases are defined as families in which no eligible adult receives TANF program benefits, yet the family continues to be headed by at least one of the biological parents, or grandparents, or other appropriate adult.

TABLE 2:
WFNJ/TANF PROGRAM **NUMBER OF APPLICATIONS AND TERMINATIONS BY COUNTY DURING AUGUST 2022**
NUMBER OF ELIGIBLE FAMILIES RECEIVING WFNJ/TANF FOR AUGUST 2022

County	Cases Added	Cases Closed **	Child-	Total		Total		%CHNG (3 Mon)	%CHNG (1 Yr.)
			Only Cases ‡	1-Adult Cases	Single-Head Families	2-Parent Families	WFNJ/TANF Families		
ATLANTIC	36	36	226	441	667	42	709	1.1%	15.3%
BERGEN	42	19	54	225	279	47	326	15.2%	41.1%
BURLINGTON	31	31	99	253	352	18	370	4.8%	22.5%
CAMDEN	76	60	480	996	1,476	110	1,586	4.5%	26.3%
CAPE MAY	9	9	23	50	73	6	79	-2.5%	16.2%
CUMBERLAND	25	20	96	161	257	21	278	2.2%	9.4%
ESSEX	77	76	281	918	1,199	114	1,313	2.7%	-2.2%
GLOUCESTER	24	22	67	188	255	14	269	1.1%	20.6%
HUDSON	115	107	309	1,231	1,540	201	1,741	1.5%	30.5%
HUNTERDON	0	2	4	29	33	4	37	2.8%	-11.9%
MERCER	55	32	224	545	769	28	797	10.7%	29.0%
MIDDLESEX	30	47	174	379	553	39	592	-1.0%	14.7%
MONMOUTH	14	13	54	162	216	15	231	-1.3%	41.7%
MORRIS	7	3	22	60	82	14	96	3.2%	28.0%
OCEAN	28	36	70	246	316	27	343	-0.3%	12.5%
PASSAIC	40	28	276	783	1,059	77	1,136	1.5%	14.1%
SALEM	20	16	36	110	146	21	167	7.1%	42.7%
SOMERSET	13	16	41	142	183	22	205	3.0%	24.2%
SUSSEX	3	4	8	14	22	5	27	3.8%	35.0%
UNION	53	28	119	351	470	154	624	6.1%	44.4%
WARREN	15	4	24	66	90	8	98	10.1%	-16.2%
NJ Total	713	609	2,687	7,350	10,037	987	11,024	3.3%	19.9%



Data is derived from NJ MMIS Shared Data Warehouse Issuance files.
 Effective July 2013 this data query source was converted to the SDW

‡ Child-only cases are defined as families in which no eligible adult receives TANF program benefits, yet the family continues to be headed by at least one of the biological parents, or grandparents, or other appropriate adult

** 'Cases closed' include cases that received a benefit in the prior month, but did not receive any TANF benefit for the report month.

Δ=higher caseload % change

*=lower caseload % change

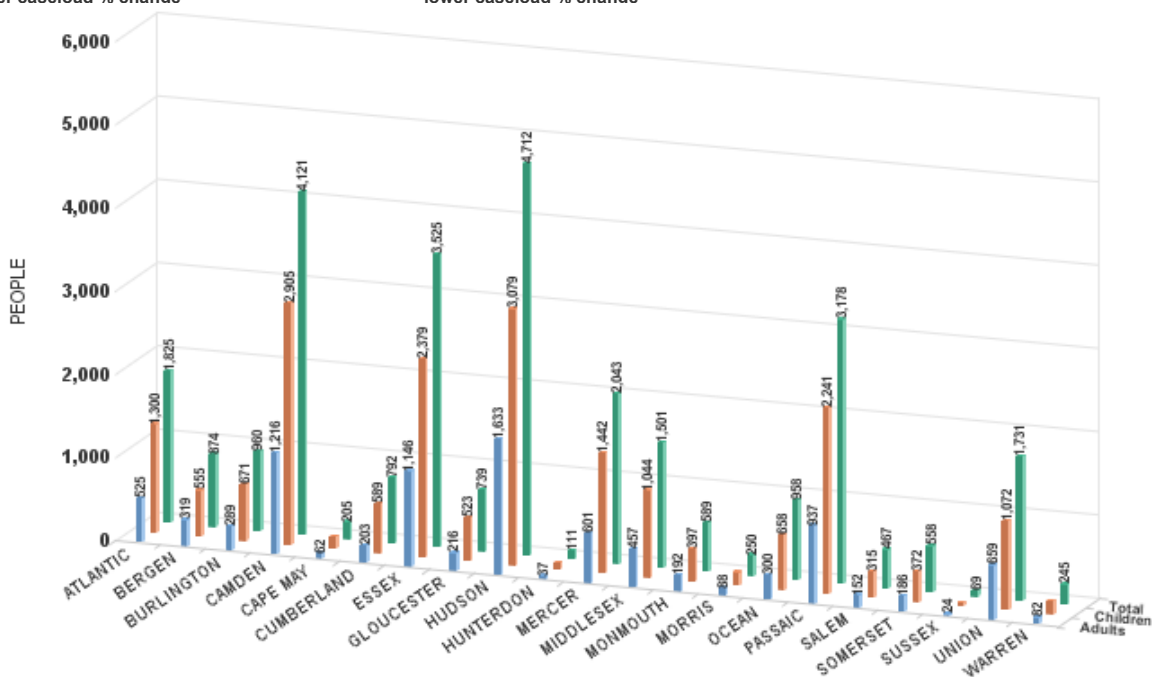
TABLE 2B :
WFNJ/TANF
PROGRAM
NUMBER OF PARTICIPATING PERSONS, ADULTS, AND CHILDREN
BY COUNTY FOR AUGUST 2022

PERSONS

County	Adults	Children	Child/Adult Ratio	Total Persons	% Chng (1 Yr)	Persons Per Case
ATLANTIC	525	1,300	2.48	1,825	21.3%	2.57
BERGEN	319	555	1.74	874	50.9%	Δ 2.68
BURLINGTON	289	671	2.32	960	28.0%	2.59
CAMDEN	1,216	2,905	2.39	4,121	31.4%	2.60
CAPE MAY	62	143	2.31	205	19.2%	2.59
CUMBERLAND	203	589	2.90	792	13.8%	2.85
ESSEX	1,146	2,379	2.08	3,525	2.2%	* 2.68
GLOUCESTER	216	523	2.42	739	34.9%	2.75
HUDSON	1,633	3,079	1.89	4,712	39.9%	2.71
HUNTERDON	37	74	2.00	111	-3.5%	* 3.00
MERCER	601	1,442	2.40	2,043	30.8%	2.56
MIDDLESEX	457	1,044	2.28	1,501	16.9%	2.54
MONMOUTH	192	397	2.07	589	61.8%	Δ 2.55
MORRIS	88	162	1.84	250	31.6%	2.60
OCEAN	300	658	2.19	958	18.0%	2.79
PASSAIC	937	2,241	2.39	3,178	19.5%	2.80
SALEM	152	315	2.07	467	52.1%	Δ 2.80
SOMERSET	186	372	2.00	558	28.9%	2.72
SUSSEX	24	45	1.88	69	38.0%	2.56
UNION	659	1,072	1.63	1,731	49.4%	2.77
WARREN	82	163	1.99	245	-20.2%	* 2.50
NJ Total	9,324	20,129	2.16	29,453	25.6%	2.67

Δ=higher caseload % change

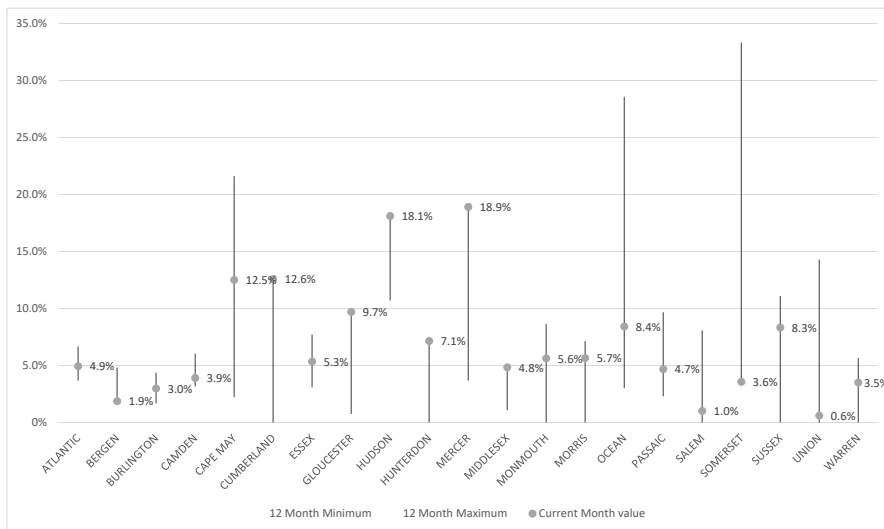
*=lower caseload % change



Data is derived from NJ MMIS Shared Data Warehouse Issuance files.
 Effective July 2013 this data query source was converted to the SDW

TABLE 3 :

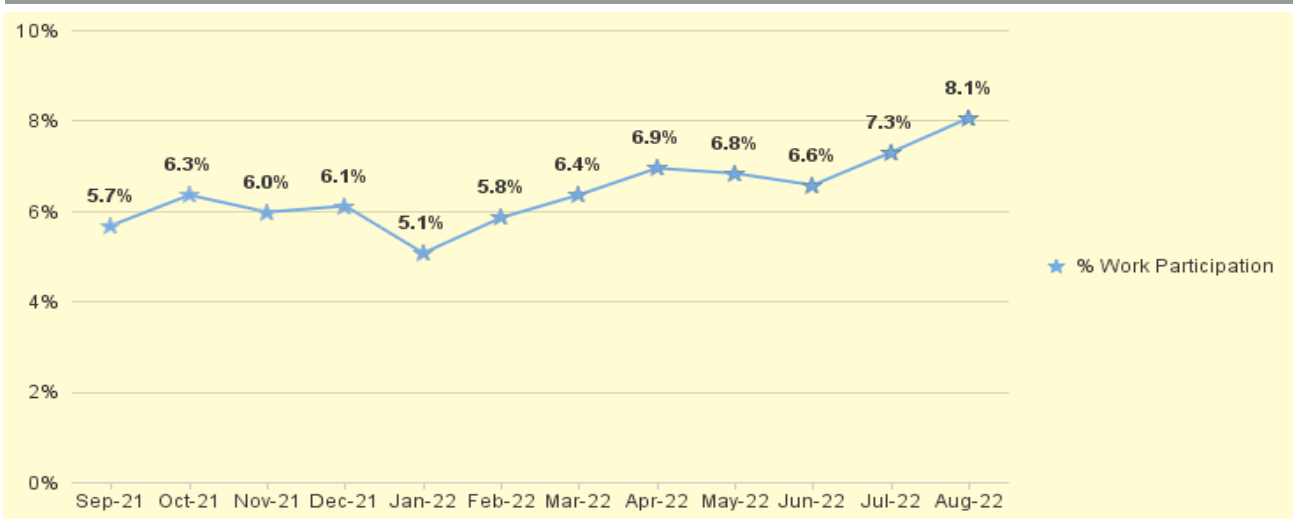
Work Participation Rates Achieved Over 12 Month Period
Ending with AUGUST 2022



Data is derived from NJ MMIS Shared Data Warehouse Issuance files.
Effective July 2013 this data query source was converted to the SDW

TABLE 4 :

WFNJ/TANF Work Participation Rates
for 12-Month Period Ending with AUGUST 2022 Statewide



The Work Participation rate measures the number of countable Temporary Assistance for Needs Families (TANF) participants based on federal formula. The reported rate is considered to be preliminary until officially calculated by the federal government soon after the close of each federal fiscal year.

**TABLE 5 :
NJ SNAP
(FOOD STAMPS)** **NUMBER OF PARTICIPATING HOUSEHOLDS, PERSONS, ADULTS
AND CHILDREN FOR AUGUST 2022 (STATEWIDE)**

		HOUSEHOLDS				PERSONS					
		WFNJ/ TANF	Other low income	Total	% CHNG (1 YR)	Adults	Children	TOTAL	% CHNG (1 YR)	Age 60+	People with a disability
2020	AUG	11,044	373,293	384,337	10.8%	414,644	333,705	748,349	9.0%	118,173	204,375
	SEP	10,928	384,063	394,991	15.7%	426,710	342,621	769,331	14.1%	122,341	214,255
	OCT	10,605	393,716	404,321	17.8%	437,538	350,440	787,978	16.2%	123,068	216,012
	NOV	10,335	395,876	406,211	18.7%	440,136	350,631	790,767	17.1%	123,104	216,208
	DEC	10,308	401,212	411,520	20.8%	446,083	354,408	800,491	19.3%	123,498	221,131
2020	Average	10,790	361,610	372,400		401,036	326,988	728,024		120,180	209,182
2021	JAN	10,214	409,050	419,264	24.8%	454,910	360,490	815,400	23.6%	123,751	221,129
	FEB	9,980	413,080	423,060	25.6%	459,801	362,760	822,561	24.4%	123,888	221,585
	MAR	9,632	418,259	427,891	27.7%	465,302	366,223	831,525	26.5%	124,614	222,961
	APR	9,474	423,186	432,660	24.3%	470,412	369,625	840,037	23.0%	125,182	224,256
	MAY	9,371	428,961	438,332	19.9%	476,827	373,151	849,978	18.4%	125,750	225,339
	JUN	9,833	440,525	450,358	21.8%	490,430	393,310	883,740	21.8%	126,085	227,479
	JUL	9,067	437,889	446,956	18.8%	485,975	379,528	865,503	17.8%	126,552	227,352
	AUG	9,070	442,333	451,403	17.4%	490,577	383,106	873,683	16.7%	127,091	228,513
	SEP	9,561	447,902	457,463	15.8%	497,122	390,345	887,467	15.4%	127,550	229,863
	OCT	9,822	452,139	461,961	14.3%	502,415	388,925	891,340	13.1%	128,700	231,751
	NOV	9,967	455,343	465,310	14.5%	506,476	391,904	898,380	13.6%	129,292	233,050
	DEC	10,138	458,239	468,377	13.8%	510,116	392,757	902,873	12.8%	129,744	238,680
	2021	Average	9,677	435,576	445,253		484,197	379,344	863,541		126,517
2022	JAN	10,418	457,935	468,353	11.7%	509,801	392,651	902,452	10.7%	157,425	236,238
	FEB	10,486	451,733	462,219	9.3%	503,693	385,199	888,892	8.1%	156,540	232,864
	MAR	10,588	455,766	466,354	9.0%	508,290	388,977	897,267	7.9%	158,331	234,617
	APR	10,706	439,659	450,365	4.1%	491,276	375,105	866,381	3.1%	156,504	231,071
	MAY	10,669	423,672	434,341	-0.9%	474,542	360,324	834,866	-1.8%	154,816	227,400
	JUN	10,650	412,366	423,016	-6.1%	462,757	351,378	814,135	-7.9%	154,107	225,452
	JUL	10,910	400,990	411,900	-7.8%	451,428	343,730	795,158	-8.1%	152,494	222,166
	AUG	12,919	421,433	434,352	-3.8%	475,405	401,190	876,595	0.3%	151,643	224,286
2022	Average to date	10,918	432,944	443,863		484,649	374,819	859,468		155,393	229,806

This Table is based on those Households & Persons that recived SNAP issuances (benefits) during the month

Data is derived from NJ MMIS Shared Data Warehouse.

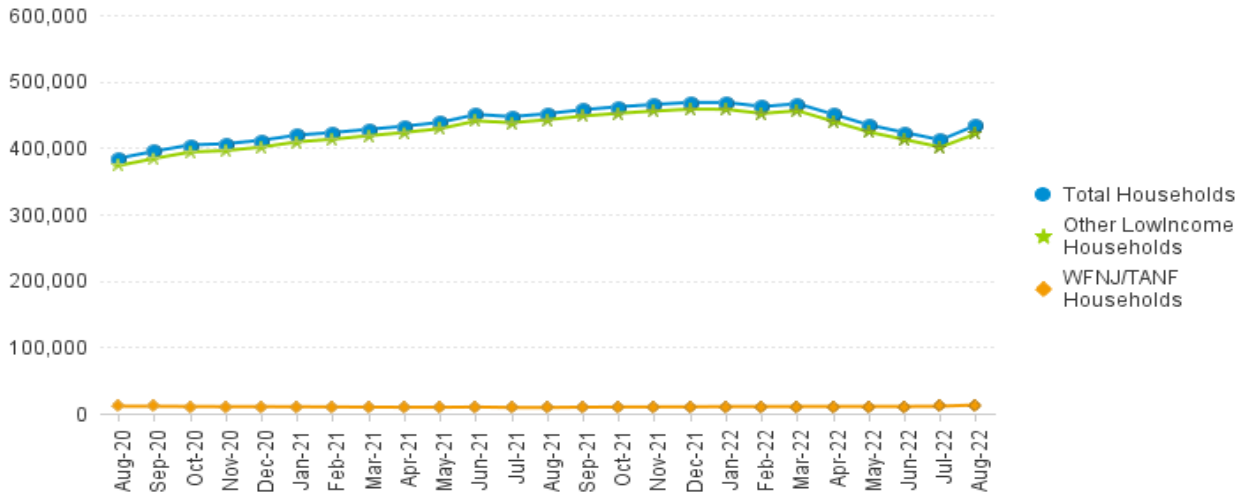
Effective July 2013 this data query source was converted to the SDW.

* Age 60+ and People with a disability columns are independent subsets of total persons. An individual might appear in both columns

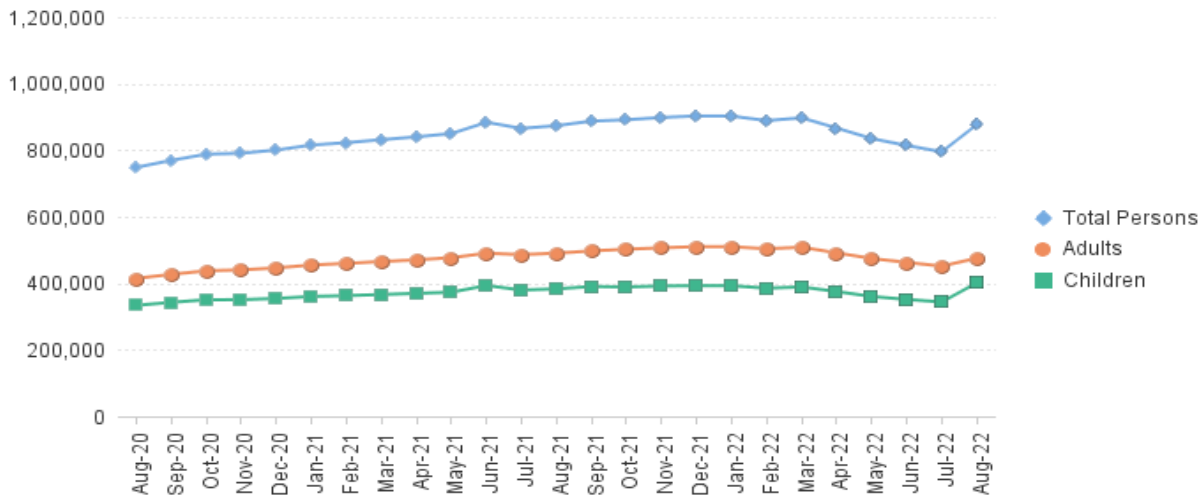
TABLE 6: NJ SNAP (FOOD STAMPS)

**TRENDS FOR PARTICIPATING HOUSEHOLDS & PERSONS
AUGUST 2020 THROUGH AUGUST 2022 (STATEWIDE)**

Statewide NJ SNAP Households: AUGUST 2020 Through AUGUST 2022



Statewide NJ SNAP Persons: AUGUST 2020 Through AUGUST 2022



Data is derived from NJ MMIS Shared Data Warehouse Issuance files.

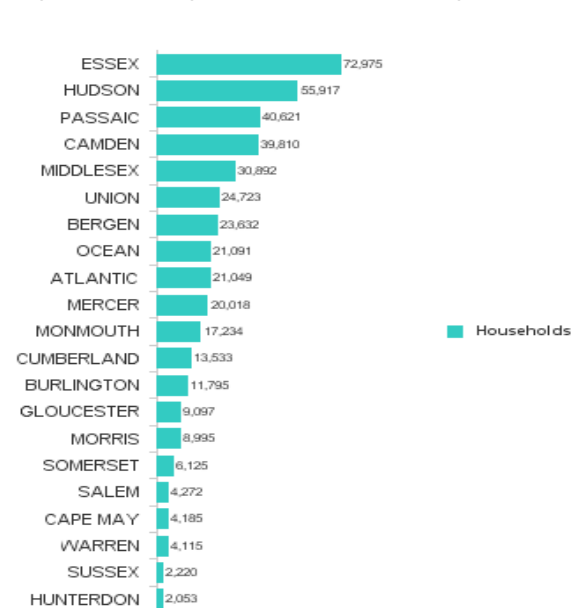
Effective July 2013 this data query source was converted to the SDW

**TABLE 7 :
NJ SNAP
NUMBER OF PARTICIPATING HOUSEHOLDS, PERSONS, ADULTS
AND CHILDREN BY COUNTY FOR AUGUST 2022**

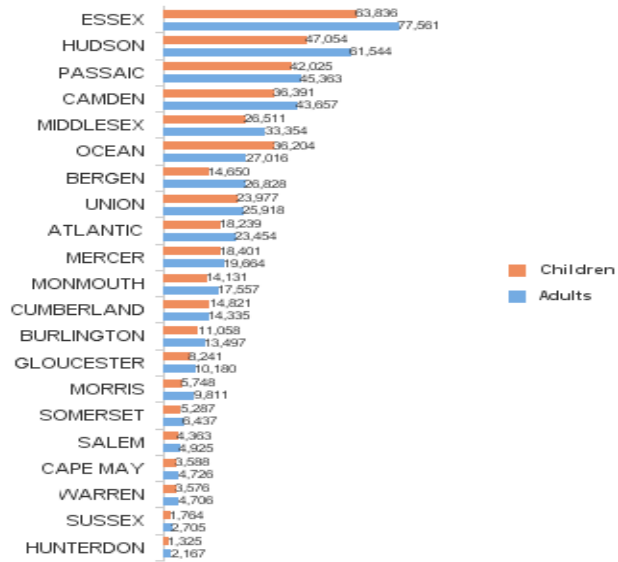
County	HOUSEHOLDS				PERSONS				Age 60+	People with a disability
	WFNJ/ TANF	Other low income	TOTAL	% Chng (1 Yr)	Adults	Children	TOTAL	% Chng (1 Yr)		
ATLANTIC	752	20,297	21,049	-4.5%	23,454	18,239	41,693	-0.7%	6,765	10,876
BERGEN	399	23,233	23,632	1.8%	26,828	14,650	41,478	6.9%	13,927	16,040
BURLINGTON	536	11,259	11,795	-2.0%	13,497	11,058	24,555	4.3%	3,639	6,699
CAMDEN	1,607	38,203	39,810	2.0%	43,657	36,391	80,048	4.9%	10,730	19,917
CAPE MAY	93	4,092	4,185	0.7%	4,726	3,588	8,314	6.5%	1,305	2,292
CUMBERLAND	292	13,241	13,533	-1.5%	14,335	14,821	29,156	3.0%	3,575	7,189
ESSEX	1,975	71,000	72,975	-2.4%	77,561	63,836	141,397	-0.6%	19,949	31,393
GLOUCESTER	335	8,762	9,097	-4.5%	10,180	8,241	18,421	0.6%	2,994	6,030
HUDSON	1,919	53,998	55,917	-14.2% *	61,544	47,054	108,598	-9.5% *	21,654	27,791
HUNTERDON	64	1,989	2,053	10.7% Δ	2,167	1,325	3,492	11.4% Δ	748	1,141
MERCER	907	19,111	20,018	3.5%	19,664	18,401	38,065	6.9%	5,574	10,638
MIDDLESEX	730	30,162	30,892	3.5%	33,354	26,511	59,865	6.8%	13,910	17,893
MONMOUTH	269	16,965	17,234	-4.2%	17,557	14,131	31,688	-0.3%	6,791	9,911
MORRIS	124	8,871	8,995	3.6% Δ	9,811	5,748	15,559	6.4%	4,807	5,469
OCEAN	413	20,678	21,091	7.5% Δ	27,016	36,204	63,220	14.0% Δ	6,636	10,657
PASSAIC	1,252	39,369	40,621	-13.3% *	45,363	42,025	87,388	-9.4% *	14,522	18,777
SALEM	186	4,086	4,272	2.3%	4,925	4,363	9,288	8.7%	1,156	2,364
SOMERSET	234	5,891	6,125	0.2%	6,437	5,287	11,724	5.3%	2,472	3,516
SUSSEX	53	2,167	2,220	-0.7%	2,705	1,764	4,469	8.9% Δ	887	1,528
UNION	664	24,059	24,723	-7.6% *	25,918	23,977	49,895	-2.2% *	8,293	11,724
WARREN	115	4,000	4,115	-5.0%	4,706	3,576	8,282	-0.5%	1,309	2,441
NJ TOTAL	12,919	421,433	434,352	-3.8%	475,405	401,190	876,595	0.3%	151,643	224,286

Δ=higher caseload % change

*=lower caseload % change



**Total NJ SNAP Recipients
AUGUST 2022 by County**



Data is derived from NJ MMIS Shared Data Warehouse.

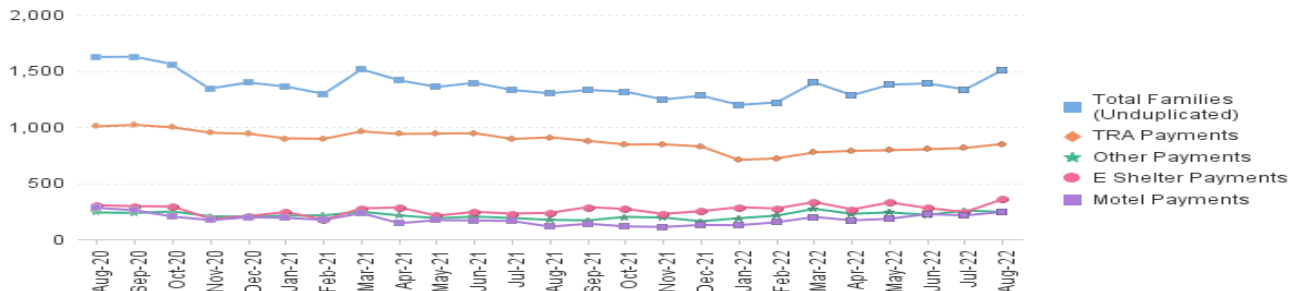
Effective July 2013 this data query source was converted to the SDW.

* Age 60+ and People with a disability columns are independent subsets of total persons. An individual might appear in both columns

TABLE 8 :
EMERGENCY ASSISTANCE (STATEWIDE)
TOTAL NUMBER OF ELIGIBLE FAMILIES RECEIVING EMERGENCY ASSISTANCE PAYMENTS
AUGUST 2020 THROUGH AUGUST 2022 - STATEWIDE

	Total WFNJ/EA Families (Undupl)	% CHNG (1 YR)	Temp Rent Asst. Payments (Undupl)	% CHNG (1 YR)	Motel Housing Payments (Undupl)	% CHNG (1 YR)	Shelter/Transitional Housing Payments (Undupl)	% CHNG (1 YR)	Other WFNJ/EA Payments (Undupl)	% CHNG (1 YR)
2020										
AUG	1,623	-3.0%	1,005	18.0%	279	75.5%	303	-40.9%	238	-46.3%
SEP	1,624	-1.0%	1,018	22.1%	258	41.0%	294	-32.1%	234	-47.9%
OCT	1,558	-14.5%	996	16.1%	201	-17.6%	292	-42.5%	247	-54.8%
NOV	1,343	-13.6%	948	8.8%	170	19.7%	180	-52.9%	204	-50.6%
DEC	1,395	-14.5%	939	9.8%	196	2.1%	206	-53.2%	201	-51.8%
2020 Average	1,560		970		220		303		274	
2021										
JAN	1,359	-23.1%	898	-5.4%	190	-24.3%	242	-42.7%	210	-59.1%
FEB	1,294	-19.1%	894	-4.1%	172	-5.0%	174	-52.3%	213	-47.9%
MAR	1,513	-12.2%	960	-2.0%	232	19.0%	275	-32.3%	244	-47.2%
APR	1,415	-2.7%	937	-2.4%	142	-7.2%	283	-15.3%	212	47.2%
MAY	1,356	-6.1%	941	5.7%	170	-28.6%	209	-22.6%	187	14.7%
JUN	1,393	-14.6%	944	-6.9%	167	-37.0%	244	-20.0%	201	-14.1%
JUL	1,328	-14.7%	892	-12.0%	162	-35.5%	228	-10.2%	189	-19.2%
AUG	1,299	-20.0%	907	-9.8%	112	-59.9%	235	-22.4%	172	-27.7%
SEP	1,329	-18.2%	876	-13.9%	138	-46.5%	286	-2.7%	168	-28.2%
OCT	1,313	-15.7%	843	-15.4%	114	-43.3%	269	-7.9%	199	-19.4%
NOV	1,244	-7.4%	845	-10.9%	109	-35.9%	226	25.6%	193	-5.4%
DEC	1,278	-8.4%	826	-12.0%	127	-35.2%	250	21.4%	160	-20.4%
2021 Average	1,343		897		153		243		196	
2022										
JAN	1,196	-12.0%	706	-21.4%	125	-34.2%	285	17.8%	187	-11.0%
FEB	1,218	-5.9%	720	-19.5%	151	-12.2%	274	57.5%	210	-1.4%
MAR	1,396	-7.7%	773	-19.5%	198	-14.7%	332	20.7%	271	11.1%
APR	1,282	-9.4%	787	-16.0%	168	18.3%	265	-6.4%	226	6.6%
MAY	1,376	1.5%	792	-15.8%	182	7.1%	328	56.9%	239	27.8%
JUN	1,387	-0.4%	801	-15.1%	224	34.1%	277	13.5%	216	7.5%
JUL	1,333	0.4%	812	-9.0%	212	30.9%	242	6.1%	255	34.9%
AUG	1,509	16.2%	849	-6.4%	243	117.0%	358	52.3%	243	41.3%
2022 Average to date	1,337		780		188		295		231	

NJ STATEWIDE
Families Receiving Emergency Assistance
AUGUST 2020 THROUGH AUGUST 2022



WFNJ/EA data is derived from NJ MMIS Shared Data Warehouse.
 Effective July 2013 this data query source was converted to the SDW.
 * Effective Feb '11 Transitional Housing Payments were removed from 'Other EA Payments' and added to 'Shelter Payments'.

TABLE 9 :

EMERGENCY ASSISTANCE (BY COUNTY) TOTAL NUMBER OF ELIGIBLE FAMILIES RECEIVING EMERGENCY ASSISTANCE PAYMENTS BY COUNTY (UNDUPLICATED CASES) FOR AUGUST 2022

County	TOTAL WFNJ/EA Families (Undupl)	% CHNG From AUG 21	Temp Rent Asst. Payments (Undupl)	Motel Housing Payments (Undupl)	Shelter/Transitional Housing Payments (Undupl)	Other WFNJ/EA Payments (Undupl)	SSI Receipts Receiving EA **
ATLANTIC	32	-37.3%	27	1	0	4	51
BERGEN	45	2.3%	30	1	11	13	49
BURLINGTON	113	130.6%	9	54	60	1	48
CAMDEN	44	57.1%	15	5	23	4	22
CAPE MAY	13	18.2%	7	6	0	0	9
CUMBERLAND	0	0%	0	0	0	0	1
ESSEX	137	-11.0%	29	0	99	20	10
GLOUCESTER	18	157.1%	3	0	8	10	10
HUDSON	256	27.4%	216	11	21	44	77
HUNTERDON	11	37.5%	7	0	0	4	7
MERCER	167	94.2%	95	44	28	28	94
MIDDLESEX	117	9.3%	74	32	3	35	51
MONMOUTH	38	111.1%	1	10	25	4	46
MORRIS	8	-38.5%	6	1	0	1	7
OCEAN	71	-28.3%	52	15	0	18	40
PASSAIC	216	-4.4%	175	6	21	27	38
SALEM	4	300.0%	2	0	1	1	1
SOMERSET	67	-5.6%	47	7	7	19	62
SUSSEX	4	0%	0	3	1	0	1
UNION	138	21.1%	50	41	49	9	35
WARREN	10	-9.1%	4	6	1	1	3
NJ Total	1,509	16.2%	849	243	358	243	662

Δ=higher caseload % change *=-lower caseload % change
 ** SSI-EA includes pay codes 22 and 24, data is derived from NJ Division of Family Development FAMS Report #FM430-03A
 WFNJ/EA data is derived from NJ MMIS Shared Data Warehouse.
 Effective July 2013 this data query source was converted to the SDW.

Number WFNJ Families Receiving EA by County AUGUST 2022

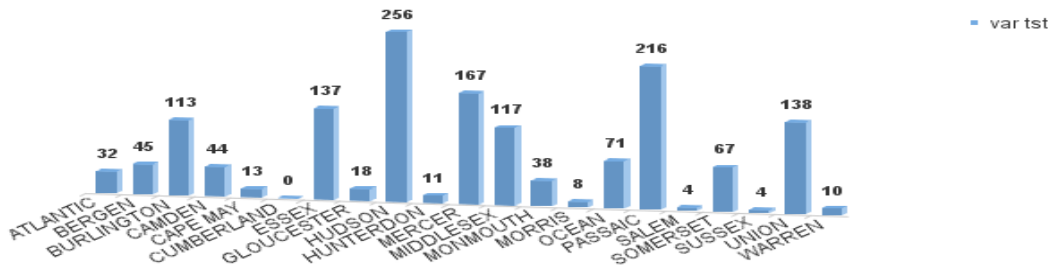
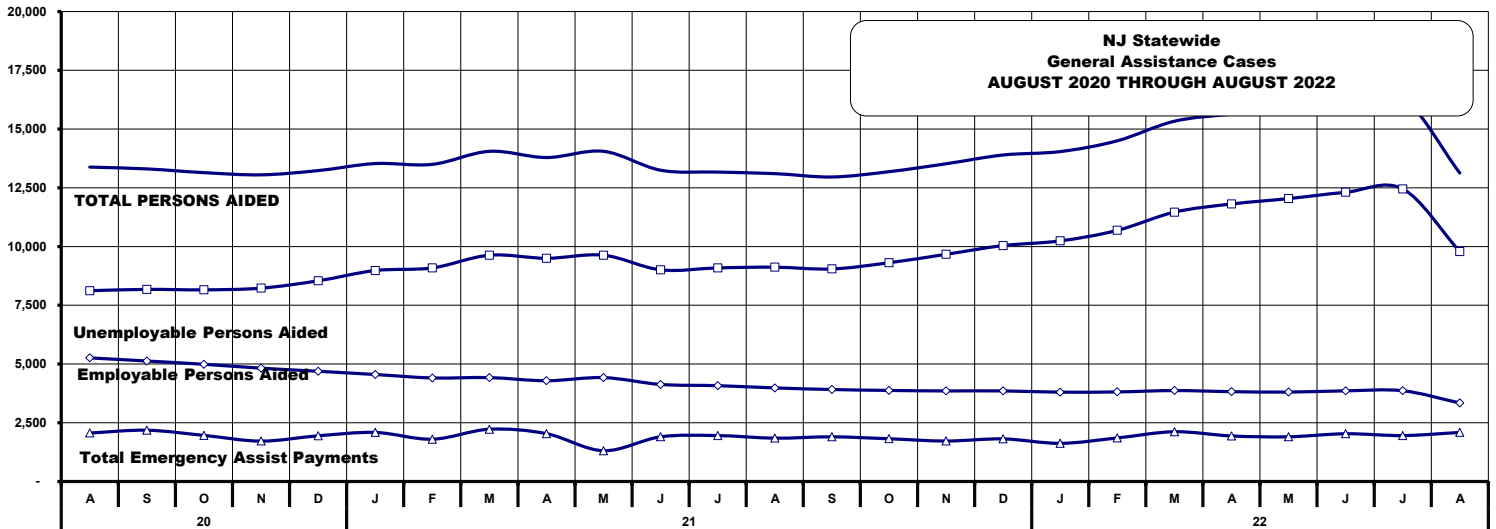


TABLE 10: GENERAL ASSISTANCE PROGRAM
NUMBER OF EMPLOYABLE AND UNEMPLOYABLE RECIPIENTS AND EMERGENCY ASSISTANCE PAYMENTS - STATEWIDE
AUGUST 2020 THROUGH AUGUST 2022

PROGRAM	Total Cases						Emergency Assistance Cases			
	Employable	% Chng (1 Yr)	Unemployable	% Chng (1 Yr)	Total	% Chng (1 Yr)	Temporary Rental Assistance	Other GA-EA	Total	% Chng (1 Yr)
2020										
AUG	8,119	86.7%	5,261	-16.0%	13,380	26.1%	875	1,188	2,063	-1.5%
SEP	8,176	93.4%	5,127	-17.2%	13,303	27.7%	849	1,333	2,182	1.1%
OCT	8,156	104.9%	4,988	-17.1%	13,144	31.5%	855	1,107	1,962	-11.2%
NOV	8,228	111.0%	4,822	-19.5%	13,050	32.0%	835	884	1,719	-17.2%
DEC	8,540	118.0%	4,691	-21.9%	13,231	33.3%	833	1,111	1,944	-4.7%
2020 AVERAGE	6,875		5,461		12,337		885	1,110	1,995	
2021										
JAN	8,978	118.5%	4,553	-23.1%	13,531	34.9%	848	1,240	2,088	-1.8%
FEB	9,089	116.1%	4,407	-25.7%	13,496	33.2%	809	991	1,800	-10.3%
MAR	9,630	97.8%	4,421	-26.2%	14,051	29.4%	819	1,405	2,224	11.4%
APR	9,499	70.0%	4,288	-26.9%	13,787	20.4%	832	1,204	2,036	15.2%
MAY	9,630	38.8%	4,421	-23.6%	14,051	10.5%	819	491	1,310	-28.7%
JUN	9,007	18.7%	4,130	-32.8%	13,247	0.1%	794	1,108	1,902	-12.4%
JUL	9,090	13.7%	4,078	-26.1%	13,168	-2.6%	833	1,121	1,954	-9.6%
AUG	9,120	12.3%	3,982	-24.3%	13,102	-2.1%	753	1,091	1,844	-10.6%
SEP	9,045	10.6%	3,914	-23.7%	12,959	-2.6%	787	1,114	1,901	-12.9%
OCT	9,309	14.1%	3,875	-22.3%	13,184	0.3%	757	1,061	1,818	-7.3%
NOV	9,668	17.5%	3,853	-20.1%	13,521	3.6%	711	1,011	1,722	0.2%
DEC	10,040	17.6%	3,855	-17.8%	13,895	5.0%	742	1,071	1,813	-6.7%
2021 AVERAGE	9,342		4,148		13,499		792	1,076	1,868	
2022										
JAN	10,239	14.0%	3,801	-16.5%	14,040	3.8%	677	947	1,624	-22.2%
FEB	10,687	17.6%	3,812	-13.5%	14,499	7.4%	727	1,126	1,853	2.9%
MAR	11,462	19.0%	3,870	-12.5%	15,332	9.1%	719	1,399	2,118	-4.8%
APR	11,810	24.3%	3,823	-10.8%	15,633	13.4%	742	1,196	1,938	-4.8%
MAY	12,039	25.0%	3,805	-13.9%	15,844	12.8%	750	1,152	1,902	45.2%
JUN	12,306	36.6%	3,858	-6.6%	16,164	22.0%	782	1,250	2,032	6.8%
JUL	12,451	37.0%	3,862	-5.3%	16,313	23.9%	758	1,196	1,954	0.0%
AUG	9,785	7.3%	3,342	-16.1%	13,127	0.2%	691	1,396	2,087	13.2%
2022 AVERAGE TO DATE	11,347		3,772		15,119		731	1,208	1,939	



Source: NJ Division of Family Development, GA Fiscal Unit

**TABLE 11:
GENERAL
ASSISTANCE
PROGRAM**

**EMPLOYABLE AND UNEMPLOYABLE CASES
AND EMERGENCY ASSISTANCE CASES RECEIVING PAYMENTS BY COUNTY
AUGUST 2022**

	Total Cases						Emergency Assistance Cases			
	Employable	% Chng (1 Yr)	Unemployable	% Chng (1 Yr)	Total	% Chng (1 Yr)	Temporary Rental Assistance	Other GA-EA	Total	% Chng (1 Yr)
ATLANTIC	1,121	38.9%	161	-18.7%	1,282	27.6%	79	43	122	28.4%
BERGEN	359	13.6%	196	3.7%	555	9.9%	80	18	98	-9.3%
BURLINGTON	388	14.1%	130	-37.8%	518	-5.6%	10	105	115	-4.2%
CAMDEN	1,658	26.7%	438	-4.4%	2,096	18.6%	40	115	155	44.9%
CAPE MAY	114	60.6%	44	4.8%	158	39.8%	Δ	33	47	6.8%
CUMBERLAND	263	-8.4%	112	30.2%	375	0.5%	0	4	4	100.0% Δ
ESSEX	893	-3.5%	201	-33.4%	1,094	-10.8%	15	236	251	40.2%
GLOUCESTER	194	45.9%	106	-12.4%	300	18.1%	2	0	2	-66.7% *
HUDSON	1,116	-42.9%	296	-42.2%	1,412	-42.8%	*	69	166	-35.9%
HUNTERDON	142	57.8%	64	42.2%	206	52.6%	Δ	32	42	61.5%
MERCER	494	30.7%	236	-13.9%	730	12.0%	53	33	86	-4.4%
MIDDLESEX	481	9.6%	337	1.8%	818	6.2%	81	108	189	6.8%
MONMOUTH	277	25.9%	177	7.3%	454	17.9%	0	114	114	42.5%
MORRIS	216	66.2%	154	0.0%	370	30.3%	43	43	86	32.3%
OCEAN	412	26.0%	203	-10.2%	615	11.2%	39	47	86	-36.8% *
PASSAIC	456	-0.2%	160	-49.5%	616	-20.4%	*	24	55	-12.7%
SALEM	146	15.0%	40	8.1%	186	13.4%	1	6	7	250.0% Δ
SOMERSET	210	75.0%	49	-18.3%	259	43.9%	Δ	59	105	517.6% Δ
SUSSEX	52	-5.5%	26	18.2%	78	1.3%	0	10	10	-37.5% *
UNION	682	34.3%	156	4.7%	838	27.5%	38	266	304	49.8%
WARREN	111	-11.2%	56	-34.1%	167	-20.5%	*	31	43	-12.2%
NJ TOTAL	9,785	7.3%	3,342	-16.1%	13,127	0.2%	691	1,396	2,087	13.2%

Δ= ↑ Caseload %

* = ↓ Caseload %

**TABLE 12:
OFFICE OF
CHILD SUPPORT
SERVICES**

**OFFICE OF CHILD SUPPORT SERVICES
QUARTERLY PERFORMANCE REPORT
STATE SUMMARY
TITLE IV-D SOURCE COLLECTION REPORT
Comparison of Quarter-3 (FFY 2021 vs. FFY 2022)**

COLLECTION SOURCE	TOTAL 4/1/2021 - 6/30/2021	% OF TOTAL COLLECTIONS	TOTAL 4/1/2022 - 6/30/2022	% OF TOTAL COLLECTIONS	DOLLAR CHANGE	% CHANGE
FEDERAL TAX	\$26,914,603	8.34%	\$17,731,625	6.35%	\$ (9,182,978)	-34.12%
STATE TAX	\$3,024,509	0.94%	\$2,668,025	0.96%	\$ (356,484)	-11.79%
UIB	\$31,217,516	9.68%	\$5,421,741	1.94%	\$ (25,795,775)	-82.63%
INC WITHHOLD	\$188,440,986	58.42%	\$185,627,039	66.46%	\$ (2,813,947)	-1.49%
FROM OTHER STATES	\$12,916,085	4.00%	\$10,523,803	3.77%	\$ (2,392,282)	-18.52%
ADMIN ENFORCEMENT	\$6,297,192	1.95%	\$4,052,911	0.01	\$ (2,244,281)	-35.64%
OTHER	\$53,729,487	16.66%	\$53,297,540	19.08%	\$ (431,947)	-0.80%
TOTAL COLLECTIONS*	\$322,540,378	100%	\$279,322,684	100%	\$ (43,217,694)	-13.40%
DISBURSED COLLECTIONS**	\$278,577,027		\$242,148,920		\$ (36,428,107)	-13.08%

* Includes collections on both current support and arrears.

** Includes collections on both current support and arrears; also includes money sent to other states.

SOURCE: NJKiDS (Based on Federal Quarterly Report of Collections - OCSE-34A except Disbursed Collections)

Disbursed Collections obtained from Federal Data Report - OCSE-157, which is reported annually to Congress and used in the calculation of incentive dollars earned by each state.

**TABLE 13:
OFFICE OF
CHILD SUPPORT
SERVICES**

**OFFICE OF CHILD SUPPORT SERVICES
STATE SUMMARY
TITLE IV-D PATERNITY ESTABLISHMENT REPORT**
Comparison of August (FFY 2021 vs. FFY 2022)

County	AUGUST 2021			AUGUST 2022			Increase or Decrease (-) from FFY 2021 to FFY 2022
	Total Children Born Out of Wedlock*	Number of Paternities Established	Percent of Paternities Established	Total Children Born Out of Wedlock*	Number of Paternities Established	Percent of Paternities Established	
Atlantic	5,635	5,622	99.8%	5,168	5,169	100.0%	0.3%
Bergen	2,784	2,750	98.8%	2,578	2,561	99.3%	0.6%
Burlington	4,354	4,259	97.8%	3,982	3,899	97.9%	0.1%
Camden	14,169	13,867	97.9%	13,012	12,783	98.2%	0.4%
Cape May	1,079	1,070	99.2%	970	965	99.5%	0.3%
Cumberland	6,026	5,975	99.2%	5,664	5,606	99.0%	-0.2%
Essex	21,783	20,855	95.7%	19,823	19,010	95.9%	0.2%
Gloucester	3,863	3,823	99.0%	3,506	3,479	99.2%	0.3%
Hudson	8,760	8,468	96.7%	8,034	7,794	97.0%	0.3%
Hunterdon	210	212	101.0%	188	189	100.5%	-0.4%
Mercer	6,052	5,905	97.6%	5,476	5,322	97.2%	-0.4%
Middlesex	5,644	5,505	97.5%	5,215	5,111	98.0%	0.5%
Monmouth	4,343	4,245	97.7%	3,833	3,742	97.6%	-0.1%
Morris	1,090	1,084	99.4%	977	987	101.0%	1.6%
Ocean	4,302	4,213	97.9%	3,992	3,936	98.6%	0.7%
Passaic	8,867	8,639	97.4%	8,037	7,823	97.3%	-0.1%
Salem	2,472	2,371	95.9%	2,366	2,274	96.1%	0.2%
Somerset	1,203	1,182	98.3%	1,089	1,073	98.5%	0.3%
Sussex	445	442	99.3%	417	422	101.2%	1.9%
Union	9,176	8,821	96.1%	8,849	8,470	95.7%	-0.4%
Warren	765	777	101.6%	618	621	100.5%	-1.1%
NJ TOTALS	113,022	110,085	97.4%	103,794	101,236	97.5%	0.1%

SOURCE: NJKiDS (Based on Federal Performance Measures - OCSE-157)

* Information on Out of Wedlock Births obtained from NJ Bureau of Vital Statistics

**TABLE 14:
OFFICE OF
CHILD SUPPORT
SERVICES**

**OFFICE OF CHILD SUPPORT SERVICES
STATE SUMMARY
TITLE IV-D REPORT OF CASES WITH ORDERS
Comparison of August (FFY 2021 vs. FFY 2022)**

County	AUGUST 2021			AUGUST 2022			Increase or Decrease (-) from FFY 2021 to FFY 2022
	Total Cases	Cases with Orders	% of Cases with Orders	Total Cases	Cases with Orders	% of Cases with Orders	
Atlantic	10,371	9,668	93.2%	9,947	9,187	92.4%	-0.9%
Bergen	10,551	10,305	97.7%	10,171	9,898	97.3%	-0.4%
Burlington	11,474	10,928	95.2%	11,231	10,415	92.7%	-2.5%
Camden	25,533	24,418	95.6%	24,499	23,057	94.1%	-1.5%
Cape May	2,647	2,525	95.4%	2,538	2,427	95.6%	0.2%
Cumberland	10,779	10,371	96.2%	10,382	9,855	94.9%	-1.3%
Essex	35,766	31,615	88.4%	34,149	29,740	87.1%	-1.3%
Gloucester	9,197	8,890	96.7%	8,892	8,443	95.0%	-1.7%
Hudson	17,624	16,042	91.0%	17,107	15,258	89.2%	-1.8%
Hunterdon	1,259	1,183	94.0%	1,184	1,107	93.5%	-0.5%
Mercer	11,645	10,763	92.4%	11,355	10,156	89.4%	-3.0%
Middlesex	15,226	14,394	94.5%	14,929	13,841	92.7%	-1.8%
Monmouth	11,727	11,253	96.0%	10,981	10,342	94.2%	-1.8%
Morris	5,113	4,984	97.5%	4,913	4,754	96.8%	-0.7%
Ocean	12,870	12,482	97.0%	12,373	11,871	95.9%	-1.0%
Passaic	16,948	15,118	89.2%	16,153	14,235	88.1%	-1.1%
Salem	3,748	3,601	96.1%	3,605	3,395	94.2%	-1.9%
Somerset	3,972	3,769	94.9%	3,851	3,562	92.5%	-2.4%
Sussex	2,283	2,257	98.9%	2,287	2,231	97.6%	-1.3%
Union	16,298	15,623	95.9%	15,840	15,030	94.9%	-1.0%
Warren	2,526	2,422	95.9%	2,223	2,124	95.5%	-0.3%
NJ TOTALS	237,557	222,611	93.7%	228,610	210,928	92.3%	-1.4%

SOURCE: NJKiDS (Based on Federal Performance Measures - OCSE-157)

**TABLE 15:
OFFICE OF
CHILD SUPPORT
SERVICES**

**OFFICE OF CHILD SUPPORT SERVICES
STATE SUMMARY
TITLE IV-D COLLECTIONS ON CURRENT SUPPORT**
Comparison of August (FFY 2021 vs. FFY 2022)

County	AUGUST 2021			AUGUST 2022			Increase or Decrease (-) from FFY 2021 to FFY 2022
	Total Current Support Due	Total Current Support Distributed	Total Collection Rate	Total Current Support Due	Total Current Support Distributed	Total Collection Rate	
Atlantic	\$3,503,429	\$2,335,166	66.7%	\$3,468,668	\$2,189,783	63.1%	-3.5%
Bergen	\$7,582,992	\$5,834,859	76.9%	\$7,489,777	\$5,597,048	74.7%	-2.2%
Burlington	\$5,168,073	\$3,651,705	70.7%	\$5,056,940	\$3,411,880	67.5%	-3.2%
Camden	\$7,389,508	\$4,631,510	62.7%	\$7,230,182	\$4,248,514	58.8%	-3.9%
Cape May	\$986,183	\$705,806	71.6%	\$977,449	\$660,563	67.6%	-4.0%
Cumberland	\$2,817,697	\$1,707,665	60.6%	\$2,795,595	\$1,623,258	58.1%	-2.5%
Essex	\$9,767,925	\$6,133,461	62.8%	\$9,670,052	\$5,647,313	58.4%	-4.4%
Gloucester	\$3,814,130	\$2,654,268	69.6%	\$3,706,999	\$2,444,367	65.9%	-3.7%
Hudson	\$6,719,681	\$4,659,957	69.3%	\$6,678,870	\$4,349,530	65.1%	-4.2%
Hunterdon	\$1,096,156	\$880,921	80.4%	\$1,017,661	\$854,034	83.9%	3.6%
Mercer	\$3,650,457	\$2,405,652	65.9%	\$3,660,245	\$2,308,848	63.1%	-2.8%
Middlesex	\$6,945,907	\$4,941,654	71.1%	\$6,766,091	\$4,566,252	67.5%	-3.7%
Monmouth	\$6,404,186	\$4,850,751	75.7%	\$6,127,954	\$4,476,116	73.0%	-2.7%
Morris	\$3,964,575	\$2,988,265	75.4%	\$3,863,696	\$2,861,488	74.1%	-1.3%
Ocean	\$5,921,425	\$4,353,384	73.5%	\$5,809,790	\$4,121,496	70.9%	-2.6%
Passaic	\$5,987,318	\$3,961,229	66.2%	\$5,800,897	\$3,649,315	62.9%	-3.3%
Salem	\$995,982	\$639,811	64.2%	\$1,006,423	\$600,284	59.6%	-4.6%
Somerset	\$2,646,282	\$2,228,109	84.2%	\$2,528,376	\$2,032,804	80.4%	-3.8%
Sussex	\$1,610,016	\$1,268,076	78.8%	\$1,567,796	\$1,175,816	75.0%	-3.8%
Union	\$6,368,001	\$4,526,934	71.1%	\$6,427,274	\$4,335,435	67.5%	-3.6%
Warren	\$1,145,202	\$850,111	74.2%	\$1,104,575	\$819,078	74.2%	-0.1%
NJ TOTALS	\$94,485,122	\$66,209,295	70.1%	\$92,755,308	\$61,973,222	66.8%	-3.3%

SOURCE: NJKiDS (Based on Federal Performance Measures - OCSE-157)

**TABLE 16:
OFFICE OF
CHILD SUPPORT
SERVICES**

**OFFICE OF CHILD SUPPORT SERVICES
STATE SUMMARY
TITLE IV-D CASES ARREARS COLLECTION REPORT**
Comparison of August (FFY 2021 vs. FFY 2022)

County	AUGUST 2021			AUGUST 2022			Increase or Decrease (-) from FFY 2021 to FFY 2022
	Total Cases with Arrears	Total Amount Collected	Average Arrears Collection per Case	Total Cases with Arrears	Total Amount Collected	Average Arrears Collection per Case	
Atlantic	6,425	\$813,542	\$126.62	6,128	\$680,090	\$110.98	-\$15.64
Bergen	6,629	\$1,190,922	\$179.65	6,475	\$1,015,223	\$156.79	-\$22.86
Burlington	7,188	\$1,055,465	\$146.84	6,813	\$978,803	\$143.67	-\$3.17
Camden	15,057	\$1,918,339	\$127.41	14,001	\$1,712,894	\$122.34	-\$5.06
Cape May	1,728	\$252,331	\$146.02	1,649	\$193,137	\$117.12	-\$28.90
Cumberland	6,596	\$694,295	\$105.26	6,081	\$654,284	\$107.59	\$2.33
Essex	19,795	\$3,048,937	\$154.03	18,316	\$2,449,726	\$133.75	-\$20.28
Gloucester	5,910	\$790,339	\$133.73	5,556	\$653,154	\$117.56	-\$16.17
Hudson	10,673	\$1,507,472	\$141.24	10,375	\$1,214,573	\$117.07	-\$24.17
Hunterdon	736	\$131,038	\$178.04	685	\$126,374	\$184.49	\$6.45
Mercer	7,245	\$950,703	\$131.22	6,770	\$837,090	\$123.65	-\$7.57
Middlesex	9,540	\$1,435,802	\$150.50	8,996	\$1,196,049	\$132.95	-\$17.55
Monmouth	7,314	\$1,293,433	\$176.84	6,678	\$1,012,673	\$151.64	-\$25.20
Morris	3,295	\$642,502	\$194.99	3,156	\$578,054	\$183.16	-\$11.83
Ocean	7,854	\$1,256,728	\$160.01	7,410	\$950,291	\$128.24	-\$31.77
Passaic	10,228	\$1,506,944	\$147.34	9,489	\$1,325,560	\$139.69	-\$7.64
Salem	2,253	\$254,216	\$112.83	2,064	\$211,641	\$102.54	-\$10.30
Somerset	2,436	\$375,157	\$154.01	2,324	\$510,613	\$219.71	\$65.71
Sussex	1,451	\$226,322	\$155.98	1,440	\$200,324	\$139.11	-\$16.86
Union	9,980	\$1,532,398	\$153.55	9,693	\$1,390,426	\$143.45	-\$10.10
Warren	1,537	\$179,384	\$116.71	1,392	\$181,183	\$130.16	\$13.45
NJ TOTALS	143,870	\$21,056,269	\$146.36	135,491	\$18,072,162	\$133.38	-\$12.97

SOURCE: OCSE-157 Child Support Enforcement Annual Data Report

Table 17

WORK FIRST NEW JERSEY STATISTICAL SUMMARY**WFNJ****August 2022**

COUNTY	EMPLOYMENT DIRECTED ACTIVITIES			EMPLOYED OPEN (WFNJ RECIPIENT)	SUPPORT SERVICES ON ACTIVE CASE		CLOSED FOR EMPLOYMENT THIS MONTH	POST ASSISTANCE CHILD CARE
	CWEP	ALL OTHER TRAINING	JOB SEARCH		CHILD CARE	TRAINING REL. EXPENSES		
ATLANTIC	25	72	40	49	21	106	11	28
BERGEN	9	0	0	5	17	0	4	1
BURLINGTON	100	31	77	29	28	18	3	6
CAMDEN	40	131	5	52	40	1	11	11
CAPE MAY	0	12	6	8	2	3	1	4
CUMBERLAND	0	11	14	13	13	59	2	2
ESSEX	35	170	2	65	43	94	13	43
GLOUCESTER	0	11	1	34	10	3	2	2
HUDSON	3	364	29	91	122	62	22	13
HUNTERDON	0	0	0	0	2	0	0	0
MERCER	1	253	1	70	104	49	13	36
MIDDLESEX	0	39	59	18	19	0	6	8
MONMOUTH	0	15	2	22	21	4	2	16
MORRIS	0	4	0	0	1	0	1	0
OCEAN	1	88	0	10	12	8	6	9
PASSAIC	5	29	8	25	31	6	9	9
SALEM	0	13	0	2	6	0	3	0
SOMERSET	7	16	11	10	13	7	4	4
SUSSEX	0	0	1	0	0	0	0	0
UNION	7	66	0	8	12	1	3	1
WARREN	0	5	0	6	4	0	2	4
STATE TOTAL	233	1,330	256	517	521	421	118	197

Data is derived from NJ Division of Family Development's FAMIS Reports RM064-01 & RM703-51, AdHoc Reports 5549 & 5598 and SDW Report WR00022WZ_CC

**DIVISION OF FAMILY DEVELOPMENT CURRENT PROGRAM STATISTICS
AUGUST 2022**

ACRONYMS

EMERGENCY ASSISTANCE (EA) - Payments to those eligible for WFNJ/TANF or WFNJ/GA, authorized during the 30 consecutive days immediately following the emergency (defined as a substantial loss of shelter, food, clothing, or household furnishings by fire, flood or other similar disaster) or if eligible individual or family is in an imminent or actual state of homelessness.

NJ SNAP - Formerly the Food Stamp Program, now known as NJ SNAP (NJ Supplemental Nutrition Assistance Program) authorized by Congress as a nutritional supplement program to provide low income households with more food of greater variety and better nutrition. Program eligibility is based on household income, resources, and expenses for medical, shelter, and dependent care. CWA staff refers certain recipients to the New Jersey Department of Labor for participation in the Food Stamp Employment

FAMIS: Family Assistance Management Information System

GAAS: General Assistance Automated System

NJKiDS: New Jersey Kids Deserve Support (Child Support Information Management System)

NJ MMIS SHARED DATA WAREHOUSE: The Shared Data Warehouse (SDW) is the repository for New Jersey's DFD and Medicaid data. Since 2003, OptumInsight has administered the SDW and provided access to the data through a reporting tool known as Business Objects.

OMEGA: Online Management of Economic Goal Achievement

SSI-EA: Supplemental Security Income-Emergency Assistance

WFNJ: Work First New Jersey - Fully implemented July 1, 1997, this is New Jersey's welfare reform program which responds to the requirements of the Federal Personal Responsibility and Work Opportunity Reconciliation Act (**PRWORA**) of 1996. PRWORA established Temporary Assistance for Needy Families (**TANF**) as the replacement for AFDC cash assistance. WFNJ includes two segments, **WFNJ/TANF** for families with children, and **WFNJ/GA** (General Assistance) for single adults and couples without dependent children. WFNJ emphasizes achieving self-sufficiency and limits lifetime receipt of financial assistance to a total of five years.

**DIVISION OF FAMILY DEVELOPMENT CURRENT PROGRAM STATISTICS
AUGUST 2022**

EXPLANATORY NOTES

The Department of Human Services Division of Family Development provides basic income and an opportunity to achieve self-sufficiency for individuals and families served by the Division's programs. The Division provides leadership, direction and supervision to those public agencies responsible for administering those programs and plans for and develops policies to promote self-sufficiency.

WFNJ STATISTICAL SUMMARY (TABLE 17)

Employment Directed Activities (EDA) - From Activities Summary Report (OMEGA report # RM064). Unduplicated count of persons participating in Community Work Experience Program (CWEP), All Other Training, or Job Search.

Number of Persons Employed This Month, Still Receiving TANF - Individuals with open "empl" activity on OMEGA. Ad hoc report.

Participants Receiving Child Care Services - From Issuance Disbursement Summary (OMEGA report # RM703). Total number of active participants who show receipt of Child Care.

Number of Persons Closed on FAMIS Due to Employment - From FAMIS report #5549-RM-2

Post TANF and Receiving Child Care - Persons no longer in receipt of TANF but still receiving child care. From Share Data Warehouse Child Care case count based on Child Care payments (SDW report WR00022WZ_CC).