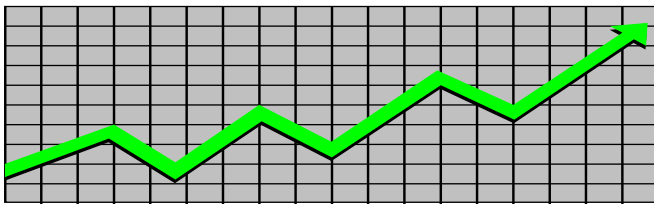


State of New Jersey
Department of Human Services
Division of Family Development

CURRENT PROGRAM STATISTICS



December 2023
Natasha Johnson, Assistant Commissioner

TABLE OF CONTENTS

HIGHLIGHTS:

WFNJ/TANF..... **ii**
NJ SNAP..... **ii**
EMERGENCY ASSISTANCE..... **ii**
GENERAL ASSISTANCE..... **iii**
 GA Emergency Assistance..... **iii**
 GA Program..... **iii**
CHILD SUPPORT SERVICES..... **iii**
WORK FIRST NEW JERSEY (WFNJ)..... **iii**
STATISTICS- BY STATE & COUNTY..... **1**
 Table 1: WFNJ/TANF Families & Persons (NJ Statewide) December 2021 to 2023..... 1
 Table 2: WFNJ/TANF Families (by County)- December 2023..... 2
 Table 2B: WFNJ/TANF Persons, Adults, & Children (by County)- December 2023..... 3
 Table 3: TANF Work Participation Rates Over 12 Month Period (by County)- December 2023..... 4
 Table 4: TANF Work Participation Rates Over 12 Month Period (NJ Statewide)- December 2023.. 5
 Table 5: NJ SNAP Households/Persons (NJ Statewide) December 2021 to 2023..... 6
 Table 6: NJ SNAP Recipient Trends (NJ Statewide) December 2021 to 2023..... 7
 Table 7: NJ SNAP Households/Persons (by County)- December 2023..... 8
 Table 8: Emergency Assistance Program (NJ Statewide) December 2021 to 2023..... 9
 Table 9: Emergency Assistance Program (by County)- December 2023..... 10
 Table 10: General Assistance Program (NJ Statewide) December 2021 to 2023..... 11
 Table 11: General Assistance Program (by County)- December 2023..... 12
 Table 12: Child Support Services Distributions (NJ Statewide) FFY 2024..... 13
 Table 13: Child Support Services Paternities Established- December 2023..... 14
 Table 14: Child Support Services Cases With Orders- December 2023..... 15
 Table 15: Child Support Services Collections On Current Support- December 2023..... 16
 Table 16: Child Support Services Cases With Payments On Arrears- December 2023..... 17
 Table 17: WFNJ Statistical Summary- December 2023..... 18
ACRONYMS..... **19**
EXPLANATORY NOTES..... **20**
 WFNJ Statistical Summary (Table 17)..... 20

DIVISION OF FAMILY DEVELOPMENT CURRENT PROGRAM STATISTICS DECEMBER 2023

Each month the Division of Family Development publishes its program statistics for: WFNJ/TANF, NJ SNAP, Emergency Assistance, General Assistance, and Child Support Services. When possible, information is provided separately for children and adults. Many tables also provide trend data with information broken down by county for readers to consider. This report is compiled and prepared by The Bureau of Research & Reporting.

WFNJ/TANF

- As of the end of December, the TANF caseload had increased by 716 cases, from 11,145 in December 2022 to 11,861 in December 2023; an increase of 6.4%.
- The counties with caseloads that increased the most since December 2022 were Essex (27.7%), Hudson (17%), and Somerset (12.4%).
- The counties with caseloads that decreased the most since December 2022 were Hunterdon (-22.4%), Sussex (-17.2%), and Passaic (-14.4%).
- Of the WFNJ/TANF cases, 2,484 or 20.9% were child-only in December 2023.
- The counties with the most child-only cases were Camden (435), Hudson (331), and Essex (264).
- Hudson (5,278), Essex (5,004), and Camden (4,300) counties had the greatest number of persons receiving TANF in December 2023.

NJ SNAP (Formerly FOOD STAMPS)

- In December 2023, there were 425,954 households receiving NJ SNAP benefits. The number of NJ SNAP households increased by 21,818 or 5.4%, since December 2022.
- There were 815,280 persons receiving NJ SNAP benefits as of December 2023; an increase of 30,450 or 3.9% since December 2022.
- The counties having the highest SNAP caseload increase since December 2022 were Union (27.6%), Burlington (15.7%), and Hudson (11.7%).
- The counties having the highest SNAP caseload decrease since December 2022 were Atlantic (-7.5%), Essex (-5%), and Cape May (-0.1%).

EMERGENCY ASSISTANCE

- There were 1,448 TANF families receiving Emergency Assistance (EA) in December 2023; an increase of 251 or 21% since December 2022.
- In December 2023, EA payments were made for 587 SSI recipients.

DIVISION OF FAMILY DEVELOPMENT CURRENT PROGRAM STATISTICS DECEMBER 2023

- There were 1,870 GA cases with Emergency Assistance payments in December 2023; an increase of 114 or 6.5% since December 2022.
- The counties that showed the highest percent increase in Emergency Assistance payments were Gloucester (212.5%), Sussex (200%), and Cumberland (175%).
- The counties that showed the highest percent decrease in Emergency Assistance payments were Salem (-50%), Camden (-38.9%), and Mercer (-31.6%).

GENERAL ASSISTANCE

- The total numbers of cases receiving GA has increased from 10,363 to 13,617 since December 2022; an increase of 31.4%.
- There were 9,712 Employable GA and 3,905 Unemployable GA cases in December 2023.
- The counties that showed a percent increase for GA cases were Passaic (60.4%), Somerset (57.6%), and Cumberland (57.5%) since December 2022.
- The counties that showed the highest percent decrease for GA cases since December 2022 was Hunterdon (-16.9%).
- In December 2023, GA cases showed a 2.96% increase since November 2023.

CHILD SUPPORT SERVICES (QUARTERLY REPORT)

- The total collection for the Child Support Services Program was about \$256 million from October 2023 to December 2023; a decrease of -0.5% over the same period from FFY 2023.
- Total distributions decreased -0.7% from December 2022.

WORK FIRST NEW JERSEY (WFNJ)

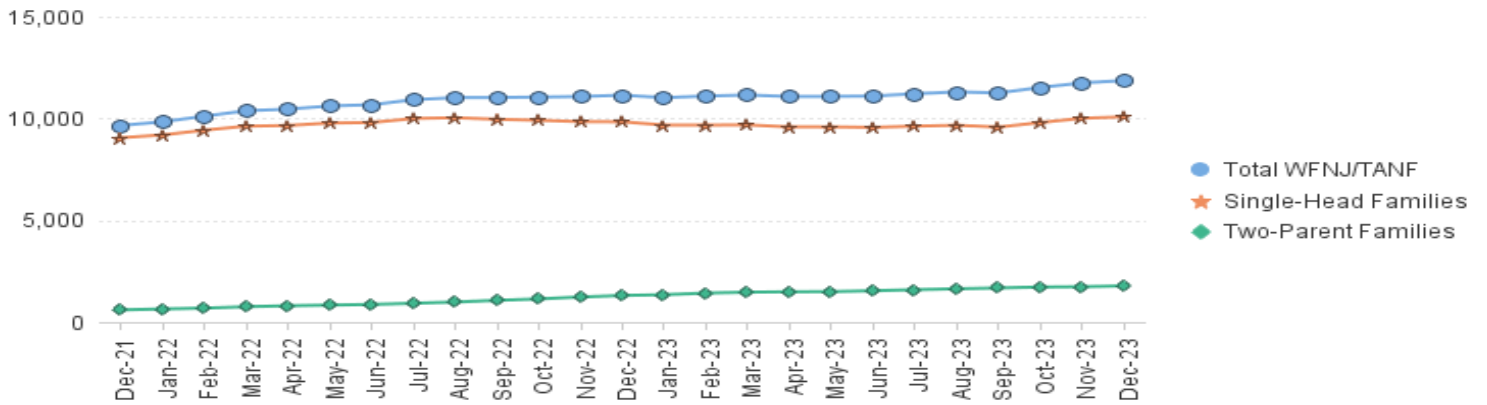
- During the report month of December 2023, there were 575 families in which at least one member was employed and an additional 200 families whose WFNJ assistance cases were closed due to employment - related earnings.
- The three counties with the greatest number of employed active WFNJ recipients were: Essex (134), Hudson (110), and Mercer (60).
- There were 250 former TANF cases receiving post-TANF support in the form of child care assistance.

TABLE 1: WFNJ/TANF PROGRAM

STATEWIDE NUMBER OF APPLICATIONS AND TERMINATIONS DURING DECEMBER 2023
NUMBER OF ELIGIBLE FAMILIES & PERSONS RECEIVING WFNJ/TANF FOR DECEMBER 2023

		DECEMBER 2021 THROUGH DECEMBER 2023										
		Cases Added	Cases Closed	Child-Only Cases ‡	Total Single-Head Families	2-Parent Families	Total WFNJ/TANF Families	%CHNG (1 Yr.)	Total Persons	%CHNG (1 Yr.)	Adults	Children
2021	DEC	702	432	2,824	9,054	601	9,655	-9.6%	25,177	-8.0%	7,432	17,745
2021	Average	458	563	3,101	9,151	532	9,683		24,807		7,114	17,693
2022	JAN	667	484	2,796	9,193	645	9,838	-6.4%	25,789	-4.3%	7,687	18,102
	FEB	655	414	2,794	9,424	689	10,113	-2.5%	26,638	0.4%	8,008	18,630
	MAR	715	512	2,804	9,623	756	10,379	0.8%	27,433	4.2%	8,331	19,102
	APR	644	622	2,743	9,656	802	10,458	5.5%	27,749	9.8%	8,517	19,232
	MAY	632	475	2,723	9,777	838	10,615	8.7%	28,183	13.4%	8,730	19,453
	JUN	622	599	2,718	9,802	869	10,671	12.4%	28,287	17.1%	8,822	19,465
	JUL	679	518	2,715	9,998	925	10,923	17.2%	29,043	22.1%	9,133	19,910
	AUG	713	609	2,687	10,037	987	11,024	19.9%	29,453	25.6%	9,324	20,129
	SEP	755	808	2,651	9,959	1,070	11,029	22.6%	29,486	28.1%	9,448	20,038
	OCT	753	821	2,626	9,910	1,139	11,049	18.6%	29,606	23.9%	9,562	20,044
	NOV	801	822	2,573	9,843	1,234	11,077	18.4%	29,858	23.0%	9,738	20,120
	DEC	747	792	2,578	9,837	1,308	11,145	15.4%	30,064	19.4%	9,875	20,189
2022	Average	699	623	2,701	9,755	939	10,693		28,466		8,931	19,535
2023	JAN	669	792	2,560	9,674	1,346	11,020	12.0%	29,683	15.1%	9,806	19,877
	FEB	760	717	2,531	9,676	1,426	11,102	9.8%	30,019	12.7%	9,997	20,022
	MAR	822	864	2,565	9,683	1,470	11,153	7.5%	30,069	9.6%	10,058	20,011
	APR	739	858	2,548	9,587	1,490	11,077	5.9%	29,826	7.5%	10,019	19,807
	MAY	825	813	2,523	9,586	1,498	11,084	4.4%	29,863	6.0%	10,059	19,804
	JUN	827	855	2,500	9,562	1,540	11,102	4.0%	29,926	5.8%	10,142	19,784
	JUL	823	764	2,487	9,624	1,590	11,214	2.7%	30,222	4.1%	10,317	19,905
	AUG	887	841	2,445	9,666	1,638	11,304	2.5%	30,533	3.7%	10,497	20,036
	SEP	912	1,097	2,410	9,577	1,677	11,254	2.0%	30,443	3.2%	10,521	19,922
	OCT	944	891	2,463	9,800	1,722	11,522	4.3%	31,139	5.2%	10,781	20,358
	NOV	859	795	2,495	10,011	1,737	11,748	6.1%	31,776	6.4%	10,990	20,786
	DEC	900	836	2,484	10,080	1,781	11,861	6.4%	32,067	6.7%	11,158	20,909
2023	Average	831	844	2,501	9,711	1,576	11,287		30,464		10,362	20,102

NJ STATEWIDE
Eligible Families Receiving WFNJ/TANF
DECEMBER 2021 THROUGH DECEMBER 2023



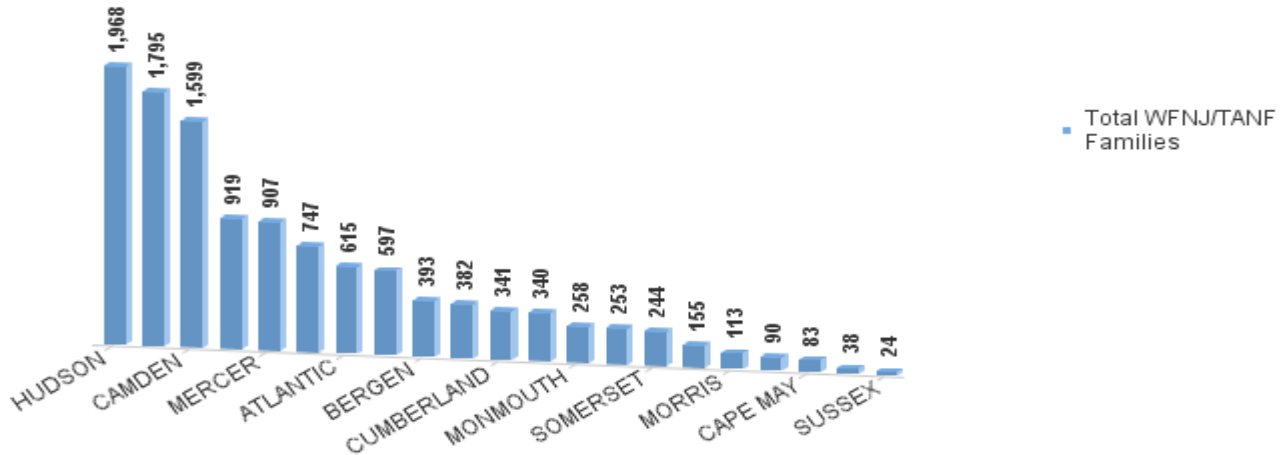
Data is derived from NJ MMIS Shared Data Warehouse Issuance files.
Effective July 2013 this data query source was converted to the SDW

‡ Child-only cases are defined as families in which no eligible adult receives TANF program benefits, yet the family continues to be headed by at least one of the biological parents, or grandparents, or other appropriate adult.

TABLE 2:
WFNJ/TANF PROGRAM **NUMBER OF APPLICATIONS AND TERMINATIONS BY COUNTY DURING DECEMBER 2023**
NUMBER OF ELIGIBLE FAMILIES RECEIVING WFNJ/TANF FOR DECEMBER 2023

County	Cases Added	Cases Closed **	Child-		Total		Total		%CHNG (3 Mon)	%CHNG (1 Yr.)
			Only Cases ‡	1-Adult Cases	Single-Head Families	2-Parent Families	WFNJ/TANF Families			
ATLANTIC	29	38	181	377	558	57	615	1.5%	-5.8%	
BERGEN	32	36	70	266	336	57	393	0.5%	-3.4%	
BURLINGTON	32	30	101	246	347	35	382	2.7%	11.0%	
CAMDEN	80	91	435	1,003	1,438	161	1,599	3.8%	3.1%	
CAPE MAY	14	5	29	49	78	5	83	20.3%	9.2%	
CUMBERLAND	28	26	103	198	301	40	341	10.0%	8.3%	
ESSEX	154	103	264	986	1,250	545	1,795	2.6%	27.7% Δ	
GLOUCESTER	21	28	62	173	235	18	253	0.4%	-5.9%	
HUDSON	151	158	331	1,382	1,713	255	1,968	-1.3%	17.0% Δ	
HUNTERDON	4	0	4	28	32	6	38	11.8%	-22.4% *	
MERCER	65	63	176	579	755	152	907	6.0%	9.8%	
MIDDLESEX	32	40	173	372	545	52	597	0.8%	3.3%	
MONMOUTH	37	28	58	173	231	27	258	0.8%	4.9%	
MORRIS	11	15	17	79	96	17	113	-2.6%	4.6%	
OCEAN	23	19	63	244	307	33	340	4.3%	-7.4%	
PASSAIC	61	46	204	635	839	80	919	6.4%	-14.4% *	
SALEM	16	20	42	93	135	20	155	-4.3%	-8.8%	
SOMERSET	21	19	39	185	224	20	244	2.5%	12.4% Δ	
SUSSEX	2	7	7	15	22	2	24	-20.0%	-17.2% *	
UNION	80	60	106	446	552	195	747	9.7%	10.0%	
WARREN	7	4	19	67	86	4	90	9.8%	-10.0%	
NJ Total	900	836	2,484	7,596	10,080	1,781	11,861	2.9%	6.4%	

**Total WFNJ/TANF Families
 DECEMBER 2023
 By County**



Data is derived from NJ MMIS Shared Data Warehouse Issuance files.
 Effective July 2013 this data query source was converted to the SDW

‡ Child-only cases are defined as families in which no eligible adult receives TANF program benefits, yet the family continues to be headed by at least one of the biological parents, or grandparents, or other appropriate adult

** 'Cases closed' include cases that received a benefit in the prior month, but did not receive any TANF benefit for the report month.

Δ=higher caseload % change

*=lower caseload % change

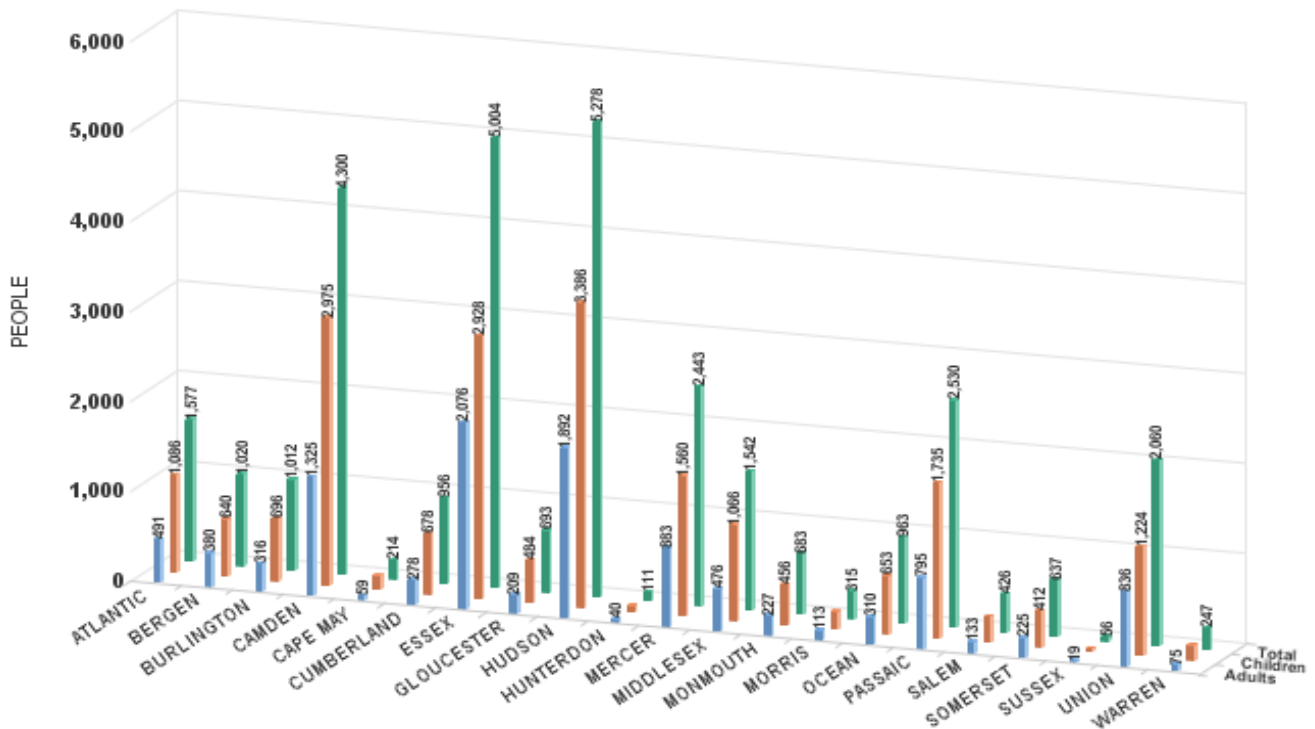
TABLE 2B :
WFNJ/TANF
PROGRAM
NUMBER OF PARTICIPATING PERSONS, ADULTS, AND CHILDREN
BY COUNTY FOR DECEMBER 2023

PERSONS

County	Adults	Children	Child/Adult Ratio	Total Persons	% Chng (1 Yr)	Persons Per Case
ATLANTIC	491	1,086	2.21	1,577	-8.0%	2.56
BERGEN	380	640	1.68	1,020	-6.2%	2.60
BURLINGTON	316	696	2.20	1,012	10.8%	2.65
CAMDEN	1,325	2,975	2.25	4,300	4.7%	2.69
CAPE MAY	59	155	2.63	214	-1.8%	2.58
CUMBERLAND	278	678	2.44	956	6.5%	2.80
ESSEX	2,076	2,928	1.41	5,004	28.2% Δ	2.79
GLOUCESTER	209	484	2.32	693	-6.5%	2.74
HUDSON	1,892	3,386	1.79	5,278	16.9% Δ	2.68
HUNTERDON	40	71	1.78	111	-21.3% *	2.92
MERCER	883	1,560	1.77	2,443	14.0% Δ	2.69
MIDDLESEX	476	1,066	2.24	1,542	3.4%	2.58
MONMOUTH	227	456	2.01	683	4.9%	2.65
MORRIS	113	202	1.79	315	9.4%	2.79
OCEAN	310	653	2.11	963	-6.8%	2.83
PASSAIC	795	1,735	2.18	2,530	-14.5% *	2.75
SALEM	133	293	2.20	426	-10.5%	2.75
SOMERSET	225	412	1.83	637	12.3%	2.61
SUSSEX	19	37	1.95	56	-26.3% *	2.33
UNION	836	1,224	1.46	2,060	9.5%	2.76
WARREN	75	172	2.29	247	-5.0%	2.74
NJ Total	11,158	20,909	1.87	32,067	6.7%	2.70

Δ=higher caseload % change

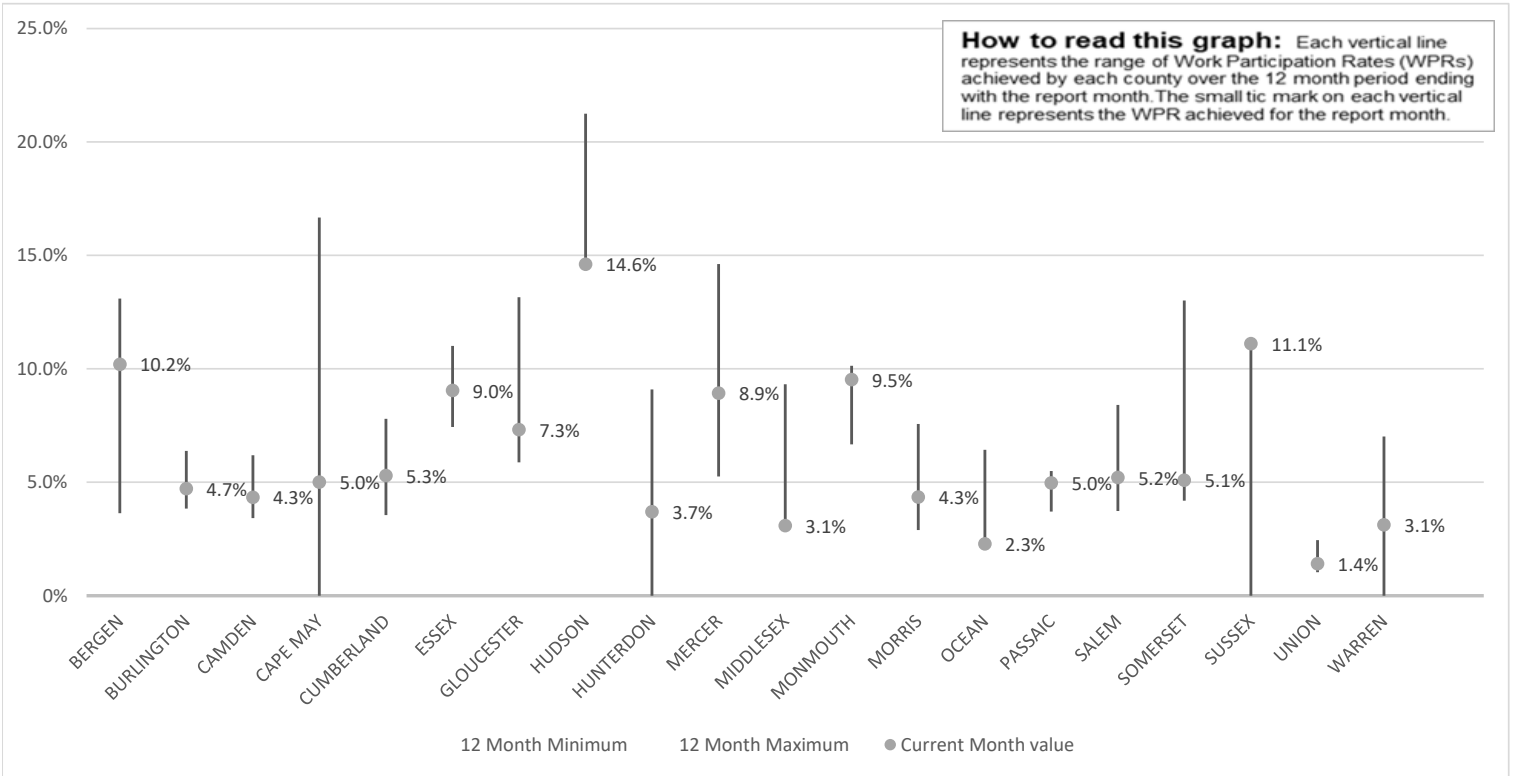
*=lower caseload % change



Data is derived from NJ MMIS Shared Data Warehouse Issuance files.
 Effective July 2013 this data query source was converted to the SDW

TABLE 3 :

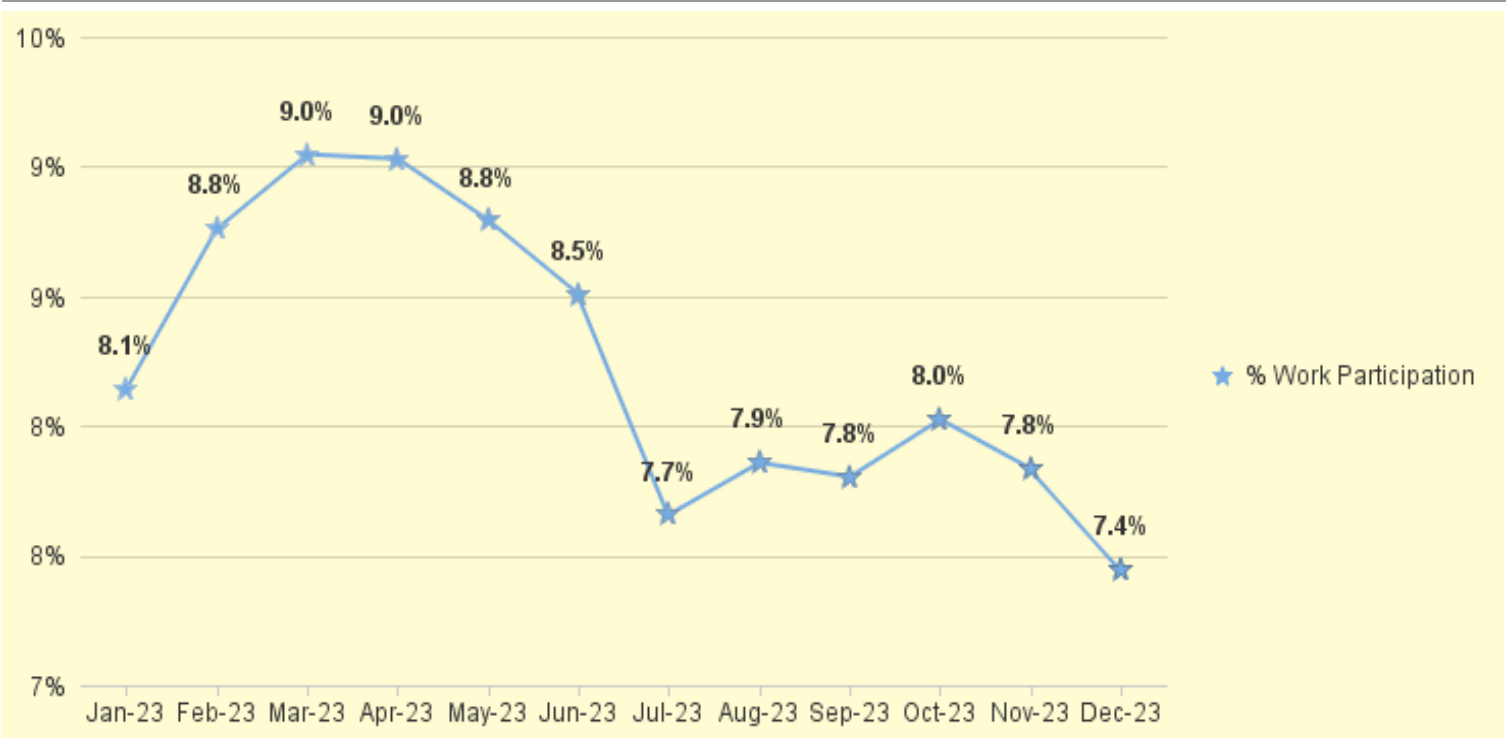
Work Participation Rates Achieved Over 12 Month Period
Ending with DECEMBER 2023



Data is derived from NJ MMIS Shared Data Warehouse Issuance files.
Effective July 2013 this data query source was converted to the SDW

TABLE 4 :

WFNJ/TANF Work Participation Rates
for 12-Month Period Ending with DECEMBER 2023 Statewide



* The Work Participation rate measures the number of countable Temporary Assistance for Needs Families (TANF) participants based on federal formula. The reported rate is considered to be preliminary until officially calculated by the federal government soon after the close of each federal fiscal year.

**TABLE 5 :
NJ SNAP NUMBER OF PARTICIPATING HOUSEHOLDS, PERSONS, ADULTS
(FOOD STAMPS) AND CHILDREN FOR DECEMBER 2023 (STATEWIDE)**

		HOUSEHOLDS				PERSONS					
		WFNJ/ TANF	Other low income	Total	% CHNG (1 YR)	Adults	Children	TOTAL	% CHNG (1 YR)	Age 60+	People with a disability
2021	DEC	10,138	458,239	468,377	13.8%	510,116	392,757	902,873	12.8%	129,744	238,680
2021	Average	9,677	435,576	445,253		484,197	379,344	863,541		126,517	227,663
2022	JAN	10,418	457,935	468,353	11.7%	509,801	392,651	902,452	10.7%	157,425	236,238
	FEB	10,486	451,733	462,219	9.3%	503,693	385,199	888,892	8.1%	156,540	232,864
	MAR	10,588	455,766	466,354	9.0%	508,290	388,977	897,267	7.9%	158,331	234,617
	APR	10,706	439,659	450,365	4.1%	491,276	375,105	866,381	3.1%	156,504	231,071
	MAY	10,669	423,672	434,341	-0.9%	474,542	360,324	834,866	-1.8%	154,816	227,400
	JUN	10,650	412,366	423,016	-6.1%	462,757	351,378	814,135	-7.9%	154,107	225,452
	JUL	10,910	400,990	411,900	-7.8%	451,428	343,730	795,158	-8.1%	152,494	222,166
	AUG	12,919	421,433	434,352	-3.8%	475,405	401,190	876,595	0.3%	151,643	224,286
	SEP	11,543	391,350	402,893	-11.9%	440,973	348,303	789,276	-11.1%	150,801	220,166
	OCT	11,175	384,016	395,191	-14.5%	433,352	329,837	763,189	-14.4%	152,434	220,723
	NOV	10,978	386,385	397,363	-14.6%	436,125	332,459	768,584	-14.4%	153,574	221,980
	DEC	11,094	393,042	404,136	-13.7%	443,837	340,993	784,830	-13.1%	155,061	227,586
2022	Average	11,011	418,196	429,207		469,290	362,512	831,802		154,511	227,191
2023	JAN	11,120	388,312	399,432	-14.7%	438,140	336,442	774,582	-14.2%	153,633	223,462
	FEB	10,806	388,213	399,019	-13.7%	437,832	336,772	774,604	-12.9%	154,374	223,539
	MAR	12,027	407,914	419,941	-10.0%	460,274	373,470	833,744	-7.1%	156,031	227,136
	APR	11,987	408,628	420,615	-6.6%	460,514	370,535	831,049	-4.1%	156,584	227,434
	MAY	11,026	397,178	408,204	-6.0%	446,453	341,774	788,227	-5.6%	157,317	225,010
	JUN	11,193	399,666	410,859	-2.9%	449,079	343,009	792,088	-2.7%	157,999	225,250
	JUL	11,874	408,109	419,983	2.0%	458,990	363,129	822,119	3.4%	158,680	226,431
	AUG	11,445	398,827	410,272	-5.5%	448,110	340,718	788,828	-10.0%	158,893	224,313
	SEP	11,607	397,739	409,346	1.6%	446,467	338,291	784,758	-0.6%	160,208	225,665
	OCT	11,862	399,663	411,525	4.1%	448,591	338,651	787,242	3.2%	161,651	226,946
	NOV	11,994	404,810	416,804	4.9%	453,939	342,920	796,859	3.7%	162,683	227,481
	DEC	12,360	413,594	425,954	5.4%	464,039	351,241	815,280	3.9%	164,787	233,859
2023	Average	11,608	401,054	412,663		451,036	348,079	799,115		158,570	226,377

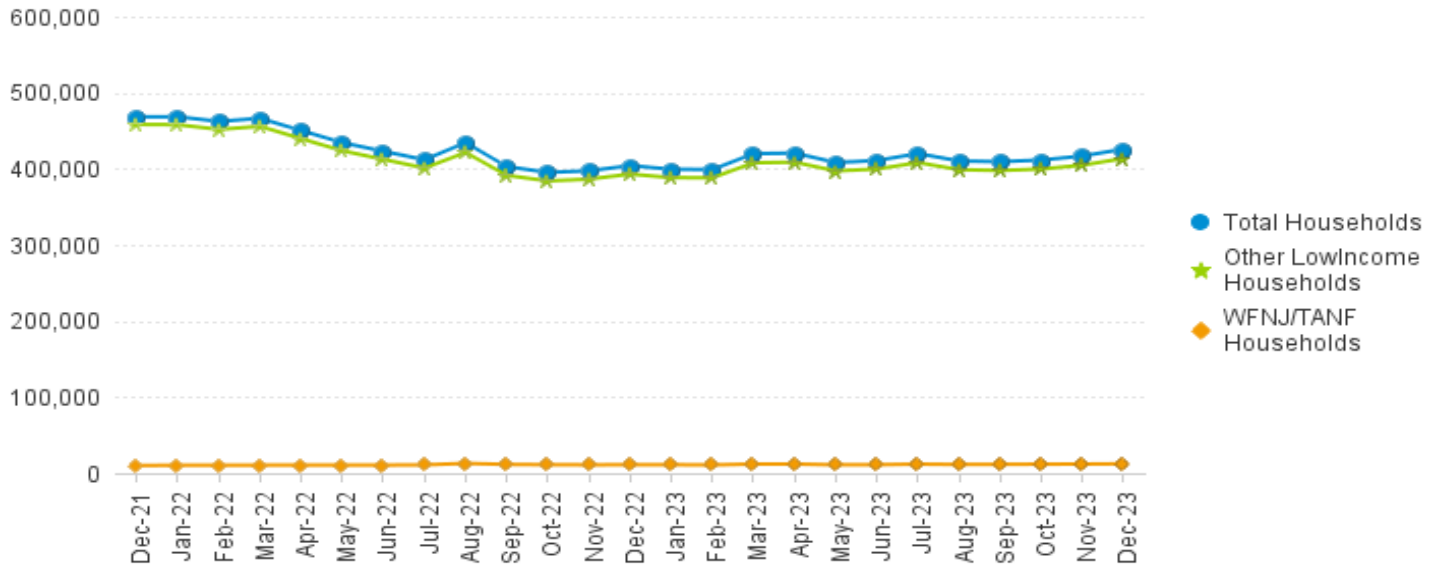
This Table is based on those Households & Persons that recived SNAP issuances (benefits) during the month

Data is derived from NJ MMIS Shared Data Warehouse.
Effective July 2013 this data query source was converted to the SDW.

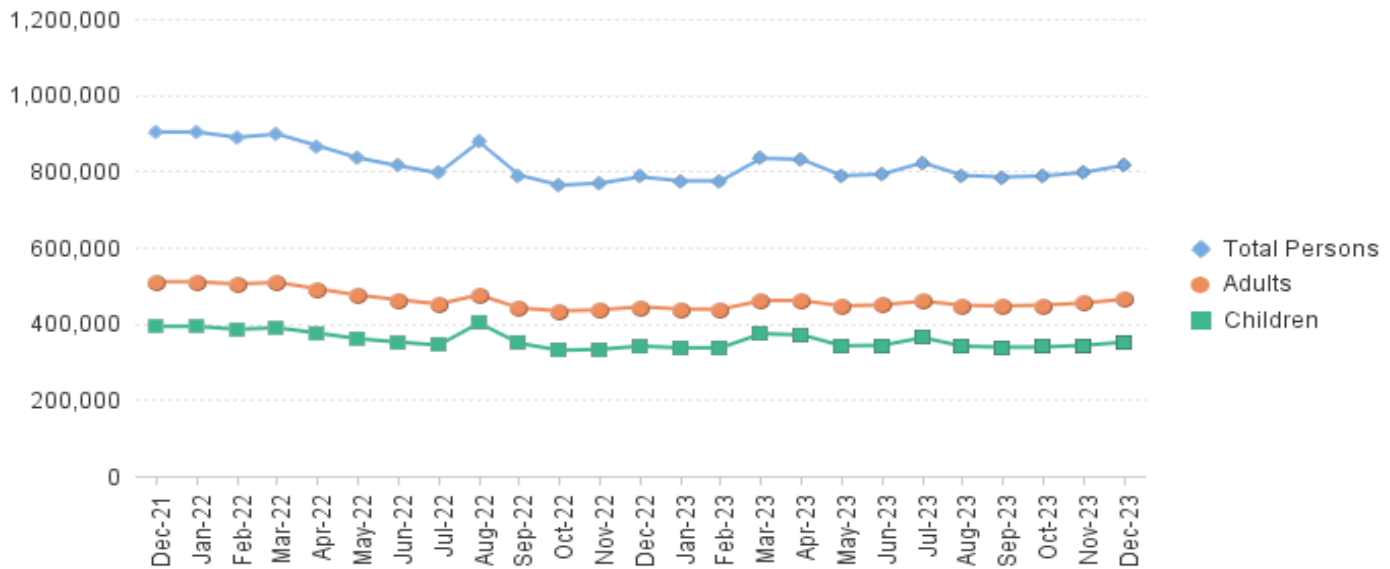
* Age 60+ and People with a disability columns are independent subsets of total persons. An individual might appear in both columns

**TABLE 6: NJ SNAP (FOOD STAMPS)
TRENDS FOR PARTICIPATING HOUSEHOLDS & PERSONS
DECEMBER 2021 THROUGH DECEMBER 2023 (STATEWIDE)**

Statewide NJ SNAP Households: DECEMBER 2021 Through DECEMBER 2023



Statewide NJ SNAP Persons: DECEMBER 2021 Through DECEMBER 2023



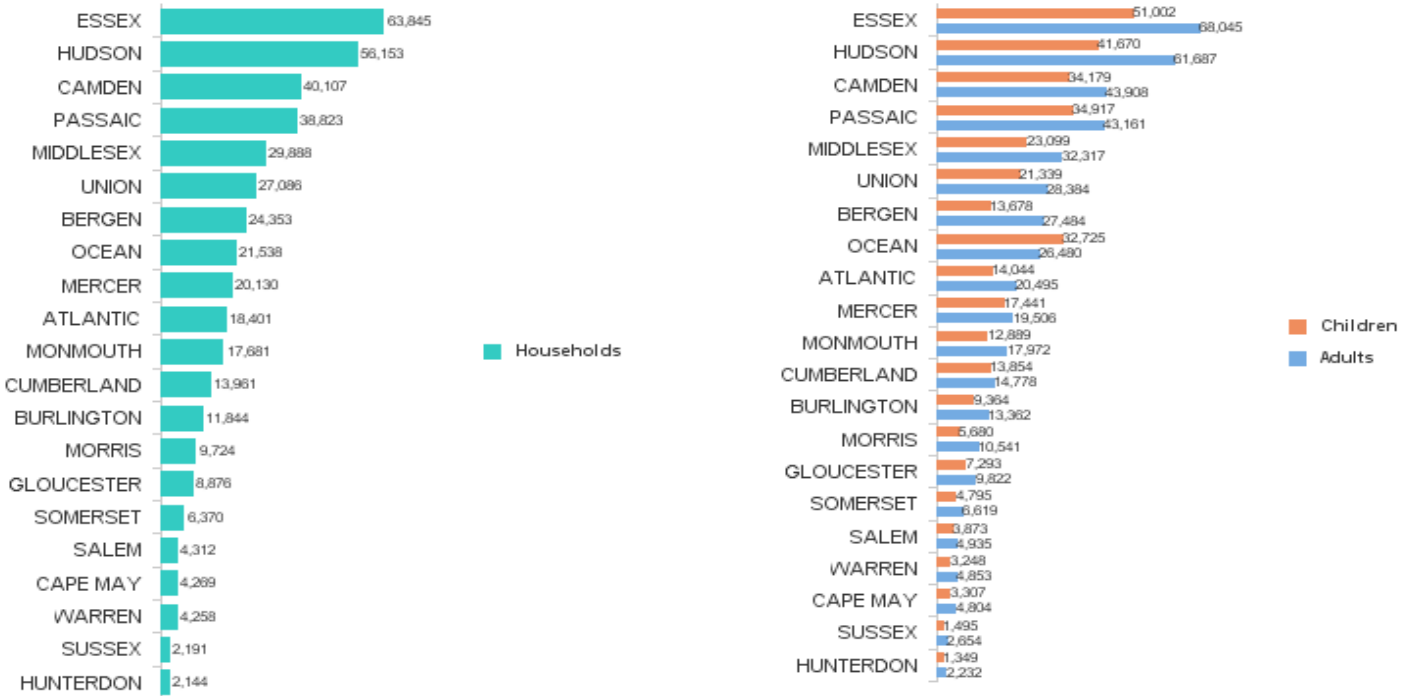
Data is derived from NJ MMIS Shared Data Warehouse Issuance files. Effective July 2013 this data query source was converted to the SDW

TABLE 7 : NJ SNAP NUMBER OF PARTICIPATING HOUSEHOLDS, PERSONS, ADULTS AND CHILDREN BY COUNTY FOR DECEMBER 2023

County	HOUSEHOLDS				PERSONS				Age 60+	People with a disability
	WFNJ/TANF	Other low income	TOTAL	% Chng (1 Yr)	Adults	Children	TOTAL	% Chng (1 Yr)		
ATLANTIC	591	17,810	18,401	-7.5% *	20,495	14,044	34,539	-10.0% *	6,938	10,440
BERGEN	386	23,967	24,353	5.5%	27,484	13,678	41,162	5.1%	15,059	17,201
BURLINGTON	498	11,346	11,844	15.7% Δ	13,362	9,364	22,726	13.3% Δ	4,045	7,046
CAMDEN	1,513	38,594	40,107	4.3%	43,908	34,179	78,087	3.5%	11,771	20,533
CAPE MAY	83	4,186	4,269	-0.1% *	4,804	3,307	8,111	-1.7% *	1,407	2,340
CUMBERLAND	329	13,632	13,961	8.0%	14,778	13,854	28,632	6.2%	3,852	7,472
ESSEX	2,265	61,580	63,845	-5.0% *	68,045	51,002	119,047	-5.7% *	20,958	31,661
GLOUCESTER	258	8,618	8,876	1.9%	9,822	7,293	17,115	2.4%	3,196	6,171
HUDSON	1,986	54,167	56,153	11.7% Δ	61,687	41,670	103,357	9.8%	23,636	29,610
HUNTERDON	45	2,099	2,144	3.4%	2,232	1,349	3,581	3.8%	861	1,260
MERCER	905	19,225	20,130	2.1%	19,506	17,441	36,947	1.5%	5,956	10,823
MIDDLESEX	598	29,290	29,888	6.4%	32,317	23,099	55,416	6.0%	14,722	18,400
MONMOUTH	281	17,400	17,681	7.2%	17,972	12,889	30,861	5.9%	7,312	10,276
MORRIS	141	9,583	9,724	10.6%	10,541	5,680	16,221	10.4% Δ	5,304	5,920
OCEAN	341	21,197	21,538	5.2%	26,480	32,725	59,205	1.2%	7,517	11,435
PASSAIC	918	37,905	38,823	7.1%	43,161	34,917	78,078	4.6%	16,152	19,947
SALEM	151	4,161	4,312	6.2%	4,935	3,873	8,808	4.2%	1,254	2,458
SOMERSET	212	6,158	6,370	8.9%	6,619	4,795	11,414	6.1%	2,798	3,829
SUSSEX	34	2,157	2,191	2.2%	2,654	1,495	4,149	0.7%	983	1,612
UNION	733	26,353	27,086	27.6% Δ	28,384	21,339	49,723	25.9% Δ	9,555	12,781
WARREN	92	4,166	4,258	8.9%	4,853	3,248	8,101	8.2%	1,511	2,644
NJ TOTAL	12,360	413,594	425,954	5.4%	464,039	351,241	815,280	3.9%	164,787	233,859

Δ=higher caseload % change * =lower caseload % change

Total NJ SNAP Recipients DECEMBER 2023 by County



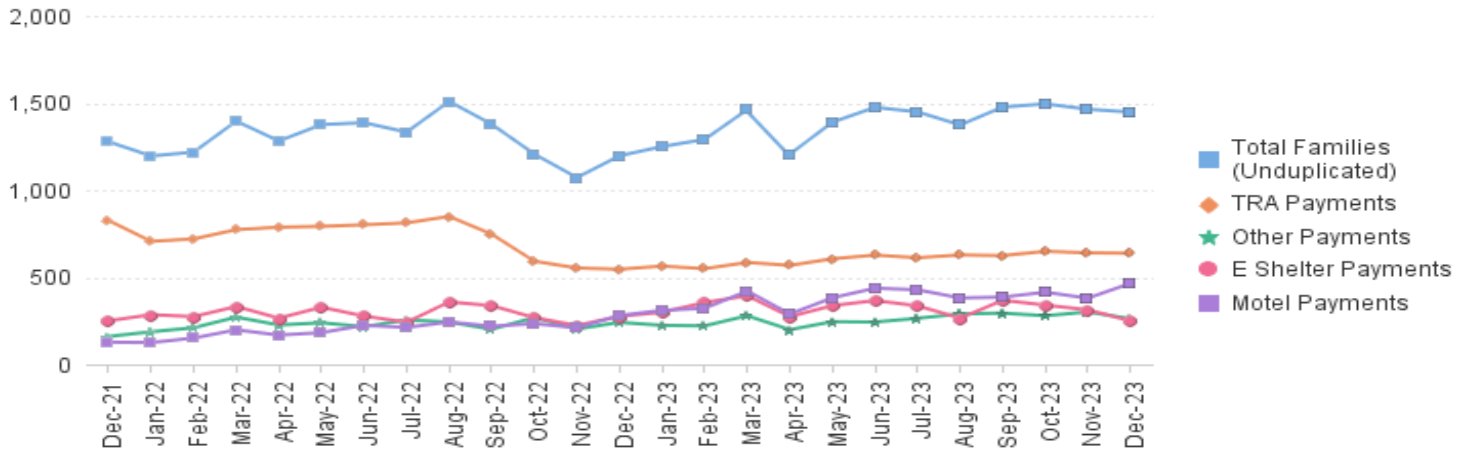
Data is derived from NJ MMIS Shared Data Warehouse. Effective July 2013 this data query source was converted to the SDW.

* Age 60+ and People with a disability columns are independent subsets of total persons. An individual might appear in both columns

TABLE 8 : EMERGENCY ASSISTANCE (STATEWIDE) TOTAL NUMBER OF ELIGIBLE FAMILIES RECEIVING EMERGENCY ASSISTANCE PAYMENTS DECEMBER 2021 THROUGH DECEMBER 2023 - STATEWIDE

		Total WFNJ/EA Families (Undupl)	% CHNG (1 YR)	Temp Rent Asst. Payments (Undupl)	% CHNG (1 YR)	Motel Housing Payments (Undupl)	% CHNG (1 YR)	Shelter/Transitional Housing Payments (Undupl)	% CHNG (1 YR)	Other WFNJ/EA Payments (Undupl)	% CHNG (1 YR)
2021	DEC	1,278	-8.4%	826	-12.0%	127	-35.2%	250	21.4%	160	-20.4%
2021	Average	1,343		897		153		243		196	
2022	JAN	1,196	-12.0%	706	-21.4%	125	-34.2%	285	17.8%	187	-11.0%
	FEB	1,218	-5.9%	720	-19.5%	151	-12.2%	274	57.5%	210	-1.4%
	MAR	1,396	-7.7%	773	-19.5%	198	-14.7%	332	20.7%	271	11.1%
	APR	1,282	-9.4%	787	-16.0%	168	18.3%	265	-6.4%	226	6.6%
	MAY	1,376	1.5%	792	-15.8%	182	7.1%	328	56.9%	239	27.8%
	JUN	1,387	-0.4%	801	-15.1%	224	34.1%	277	13.5%	216	7.5%
	JUL	1,333	0.4%	812	-9.0%	212	30.9%	242	6.1%	255	34.9%
	AUG	1,509	16.2%	849	-6.4%	243	117.0%	358	52.3%	243	41.3%
	SEP	1,378	3.7%	747	-14.7%	219	58.7%	337	17.8%	201	19.6%
	OCT	1,207	-8.1%	592	-29.8%	234	105.3%	268	-0.4%	269	35.2%
	NOV	1,072	-13.8%	553	-34.6%	210	92.7%	223	-1.3%	203	5.2%
	DEC	1,197	-6.3%	546	-33.9%	280	120.5%	276	10.4%	241	50.6%
2022	Average	1,296		723		204		289		230	
2023	JAN	1,250	4.5%	564	-20.1%	310	148.0%	299	4.9%	224	19.8%
	FEB	1,291	6.0%	549	-23.8%	322	113.2%	355	29.6%	221	5.2%
	MAR	1,462	4.7%	585	-24.3%	421	112.6%	394	18.7%	279	3.0%
	APR	1,206	-5.9%	568	-27.8%	289	72.0%	274	3.4%	199	-11.9%
	MAY	1,390	1.0%	606	-23.5%	382	109.9%	337	2.7%	245	2.5%
	JUN	1,475	6.3%	627	-21.7%	437	95.1%	366	32.1%	243	12.5%
	JUL	1,449	8.7%	612	-24.6%	428	101.9%	336	38.8%	264	3.5%
	AUG	1,374	-8.9%	628	-26.0%	381	56.8%	265	-26.0%	290	19.3%
	SEP	1,477	7.2%	624	-16.5%	386	76.3%	368	9.2%	294	46.3%
	OCT	1,495	23.9%	649	9.6%	414	76.9%	340	26.9%	279	3.7%
	NOV	1,464	36.6%	640	15.7%	380	81.0%	313	40.4%	301	48.3%
	DEC	1,448	21.0%	638	16.8%	465	66.1%	249	-9.8%	262	8.7%
2023	Average	1,398		608		385		325		258	

NJ STATEWIDE Families Receiving Emergency Assistance DECEMBER 2021 THROUGH DECEMBER 2023



* Effective Feb '11 Transitional Housing Payments were removed from 'Other EA Payments' and added to 'Shelter Payments'.

TABLE 9 :
EMERGENCY ASSISTANCE (BY COUNTY) **TOTAL NUMBER OF ELIGIBLE FAMILIES RECEIVING EMERGENCY ASSISTANCE PAYMENTS BY COUNTY (UNDUPLICATED CASES) FOR DECEMBER 2023**

County	TOTAL	%		Temp	Motel	Shelter/Transitional	Other	SSI
	WFNJ/EA Families (Undupl)	CHNG From DEC 22		Rent Asst. Payments (Undupl)	Housing Payments (Undupl)	Housing Payments (Undupl)	WFNJ/EA Payments (Undupl)	Receipients Receiving EA **
ATLANTIC	42	82.6%	Δ	28	9	2	9	43
BERGEN	39	44.4%		19	1	13	11	33
BURLINGTON	55	-23.6%		13	41	0	7	31
CAMDEN	74	105.6%	Δ	9	40	24	10	28
CAPE MAY	26	23.8%		6	21	0	2	9
CUMBERLAND	5	0%		0	0	4	1	2
ESSEX	113	14.1%		38	0	64	21	9
GLOUCESTER	16	23.1%		1	2	2	12	5
HUDSON	351	61.8%		195	108	31	57	134
HUNTERDON	5	-37.5%	*	0	2	0	3	2
MERCER	173	18.5%		80	73	2	39	104
MIDDLESEX	68	-35.2%	*	32	22	5	20	46
MONMOUTH	45	9.8%		1	16	31	3	31
MORRIS	16	23.1%		8	6	1	3	8
OCEAN	53	-24.3%		23	26	0	11	13
PASSAIC	139	6.9%		107	7	16	17	27
SALEM	4	100.0%	Δ	2	0	1	1	2
SOMERSET	74	17.5%		42	13	13	21	35
SUSSEX	2	-33.3%	*	0	1	1	0	3
UNION	138	42.3%		31	73	37	9	17
WARREN	10	-9.1%		3	4	2	5	5
NJ Total	1,448	21.0%		638	465	249	262	587

Δ=higher caseload % change

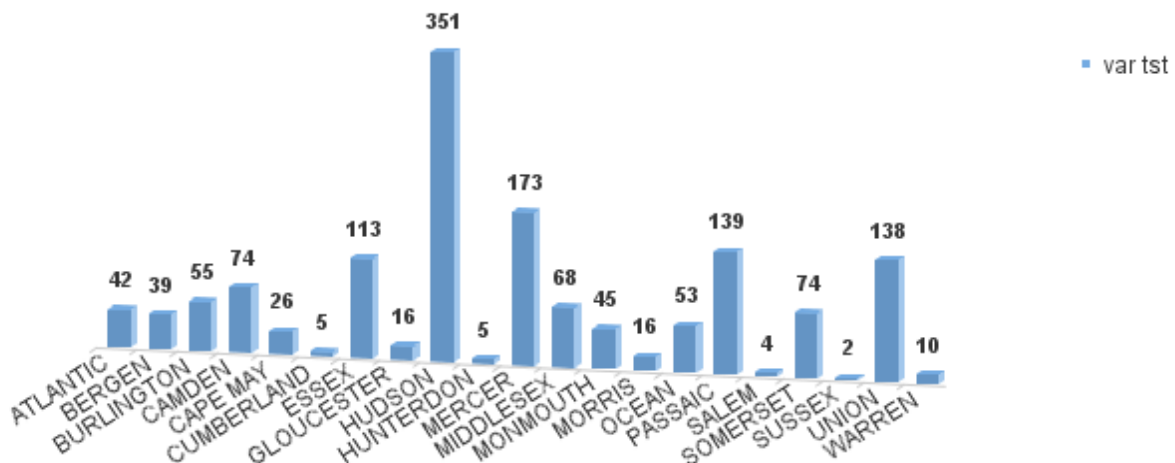
*=lower caseload % change

** SSI-EA includes pay codes 22 and 24, data is derived from NJ Division of Family Development FAMIS Report #FM430-03A

WFNJ/EA data is derived from NJ MMIS Shared Data Warehouse.

Effective July 2013 this data query source was converted to the SDW.

**Number WFNJ Families Receiving EA by County
 DECEMBER 2023**



**TABLE 10:
GENERAL
ASSISTANCE
PROGRAM**

**NUMBER OF EMPLOYABLE AND UNEMPLOYABLE RECIPIENTS
AND EMERGENCY ASSISTANCE PAYMENTS - STATEWIDE
DECEMBER 2021 THROUGH DECEMBER 2023**

PROGRAM	Total Cases						Emergency Assistance Cases			
	Employable	% Chng (1 Yr)	Unemployable	% Chng (1 Yr)	Total	% Chng (1 Yr)	Temporary Rental Assistance	Other GA-EA	Total	% Chng (1 Yr)
2021 DEC	10,040	17.6%	3,855	-17.8%	13,895	5.0%	742	1,071	1,813	-6.7%
2021 AVERAGE	9,342		4,148		13,499		792	1,076	1,868	
2022 JAN	10,239	14.0%	3,801	-16.5%	14,040	3.8%	677	947	1,624	-22.2%
FEB	10,687	17.6%	3,812	-13.5%	14,499	7.4%	727	1,126	1,853	2.9%
MAR	11,462	19.0%	3,870	-12.5%	15,332	9.1%	719	1,399	2,118	-4.8%
APR	11,810	24.3%	3,823	-10.8%	15,633	13.4%	742	1,196	1,938	-4.8%
MAY	12,039	25.0%	3,805	-13.9%	15,844	12.8%	750	1,152	1,902	45.2%
JUN	12,306	36.6%	3,858	-6.6%	16,164	22.0%	782	1,250	2,032	6.8%
JUL	12,451	37.0%	3,862	-5.3%	16,313	23.9%	758	1,196	1,954	0.0%
AUG	9,785	7.3%	3,342	-16.1%	13,127	0.2%	691	1,396	2,087	13.2%
SEP	8,370	-7.5%	3,225	-17.6%	11,595	-10.5%	635	1,261	1,896	-0.3%
OCT	7,829	-15.9%	3,291	-15.1%	11,120	-15.7%	574	1,184	1,758	-3.3%
NOV	7,313	-24.4%	3,326	-13.7%	10,639	-21.3%	602	1,040	1,642	-4.6%
DEC	6,950	-30.8%	3,413	-11.5%	10,363	-25.4%	599	1,157	1,756	-3.1%
2022 AVERAGE	10,103		3,619		13,722		688	1,192	1,880	
2023 JAN	6,760	-34.0%	3,447	-9.3%	10,207	-27.3%	590	1,112	1,702	4.8%
FEB	6,563	-38.6%	3,408	-10.6%	9,971	-31.2%	570	1,170	1,740	-6.1%
MAR	6,607	-42.4%	3,555	-8.1%	10,162	-33.7%	586	1,251	1,837	-10.8%
APR	6,569	-44.4%	3,573	-6.5%	10,142	-35.1%	623	1,158	1,781	-8.1%
MAY	6,567	-45.5%	3,686	-3.1%	10,253	-35.3%	634	1,267	1,901	-0.1%
JUN	6,629	-46.1%	3,782	-2.0%	10,411	-35.6%	633	1,155	1,788	-12.0%
JUL	6,971	-44.0%	3,754	-2.8%	10,725	-34.3%	605	1,097	1,702	-12.9%
AUG	7,840	-19.9%	3,817	14.2%	11,657	-11.2%	602	1,268	1,870	-10.4%
SEP	8,277	-1.1%	3,755	16.4%	12,032	3.8%	610	1,005	1,615	-14.8%
OCT	8,997	14.9%	3,831	16.4%	12,828	15.4%	583	1,209	1,792	1.9%
NOV	9,407	28.6%	3,818	14.8%	13,225	24.3%	600	1,114	1,714	4.4%
DEC	9,712	39.7%	3,905	14.4%	13,617	31.4%	598	1,272	1,870	6.5%
2023 AVERAGE	7,575		3,694		11,269		603	1,173	1,776	

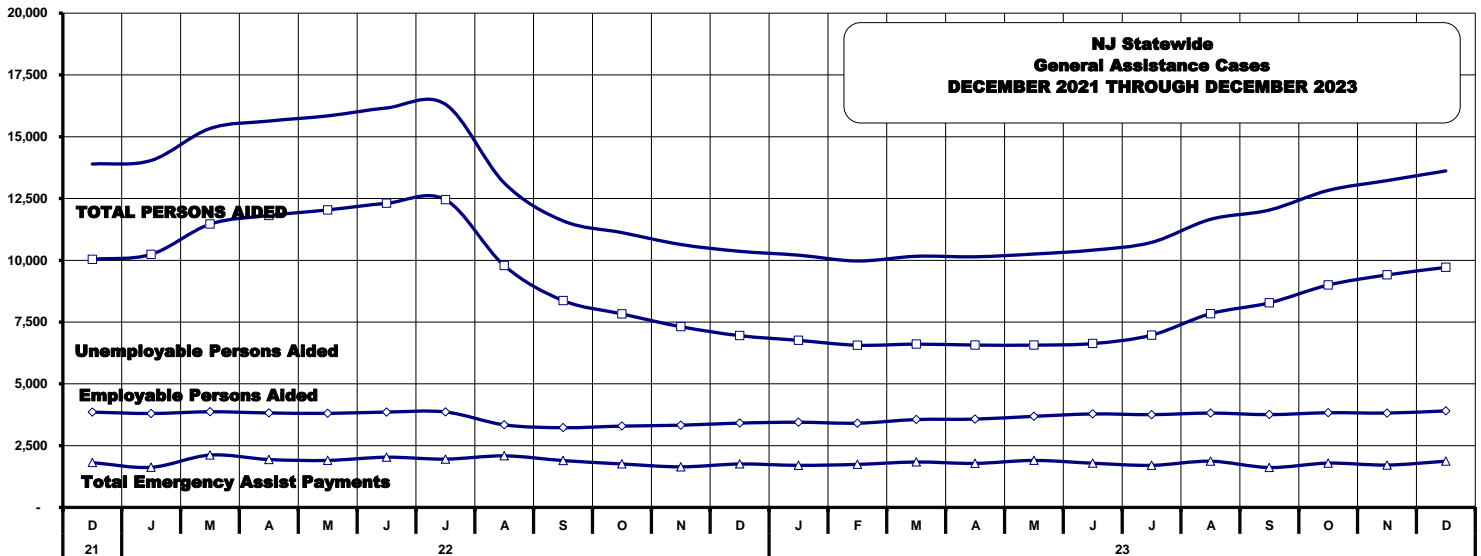


TABLE 11: EMPLOYABLE AND UNEMPLOYABLE CASES AND EMERGENCY ASSISTANCE CASES RECEIVING PAYMENTS BY COUNTY DECEMBER 2023

PROGRAM	Total Cases						Emergency Assistance Cases			
	Employable	% Chng (1 Yr)	Unemployable	% Chng (1 Yr)	Total	% Chng (1 Yr)	Temporary Rental Assistance	Other GA-EA	Total	% Chng (1 Yr)
ATLANTIC	975	20.2%	158	-1.9%	1,133	16.6%	98	29	127	84.1%
BERGEN	322	25.3%	244	-5.4%	566	9.9%	55	19	74	-20.4%
BURLINGTON	329	33.2%	186	59.0%	515	41.5%	8	87	95	-19.5%
CAMDEN	1,432	36.0%	459	11.7%	1,891	29.2%	31	49	80	-38.9% *
CAPE MAY	138	4.5%	50	11.1%	188	6.2% *	13	41	54	-1.8%
CUMBERLAND	362	75.7%	194	32.0%	556	57.5% Δ	2	20	22	175.0% Δ
ESSEX	998	43.2%	251	20.1%	1,249	37.9%	15	154	169	-30.7%
GLOUCESTER	212	32.5%	127	13.4%	339	24.6%	3	22	25	212.5% Δ
HUDSON	1,340	62.2%	344	26.0%	1,684	53.2%	110	152	262	80.7%
HUNTERDON	88	-9.3%	45	-28.6%	133	-16.9% *	5	25	30	7.1%
MERCER	432	10.5%	257	6.2%	689	8.8%	33	45	78	-31.6% *
MIDDLESEX	325	28.0%	349	12.9%	674	19.7%	53	80	133	-23.6%
MONMOUTH	332	94.2%	220	19.6%	552	55.5%	3	97	100	14.9%
MORRIS	207	19.7%	171	10.3%	378	15.2%	33	47	80	-3.6%
OCEAN	401	47.4%	222	7.8%	623	30.3%	20	52	72	0.0%
PASSAIC	556	91.7%	164	3.1%	720	60.4% Δ	24	21	45	0.0%
SALEM	109	28.2%	54	8.0%	163	20.7%	0	1	1	-50.0% *
SOMERSET	286	59.8%	89	50.8%	375	57.6% Δ	43	68	111	38.8%
SUSSEX	34	21.4%	22	0.0%	56	12.0%	0	6	6	200.0% Δ
UNION	748	39.0%	235	40.7%	983	39.4%	42	235	277	65.9%
WARREN	86	3.6%	64	0.0%	150	2.0% *	7	22	29	-6.5%
NJ TOTAL	9,712	39.7%	3,905	14.4%	13,617	31.4%	598	1,272	1,870	6.5%

Δ= ↑ Caseload %

* = ↓ Caseload %

**TABLE 12:
OFFICE OF
CHILD SUPPORT
SERVICES**

**OFFICE OF CHILD SUPPORT SERVICES
QUARTERLY PERFORMANCE REPORT
STATE SUMMARY
TITLE IV-D SOURCE COLLECTION REPORT**

Comparison of Quarter-1 (FFY 2023 vs. FFY 2024)

COLLECTION SOURCE	TOTAL 10/1/2022 - 12/31/2022	% OF TOTAL COLLECTIONS	TOTAL 10/1/2023 - 12/31/2023	% OF TOTAL COLLECTIONS	DOLLAR CHANGE	% CHANGE
FEDERAL TAX	\$2,961,234	1.15%	\$1,319,460	0.52%	\$ (1,641,774)	-55.44%
STATE TAX	\$426,243	0.17%	\$928,831	0.36%	\$ 502,588	117.91%
UIB	\$4,946,061	1.92%	\$6,063,771	2.37%	\$ 1,117,710	22.60%
INC WITHHOLD	\$183,380,696	71.32%	\$182,967,725	71.52%	\$ (412,971)	-0.23%
FROM OTHER STATES	\$10,082,545	3.92%	\$10,369,317	4.05%	\$ 286,772	2.84%
ADMIN ENFORCEMENT	\$4,104,769	1.60%	\$3,934,137	0.02%	\$ (170,632)	-4.16%
OTHER	\$51,204,946	19.92%	\$50,237,944	19.64%	\$ (967,002)	-1.89%
TOTAL COLLECTIONS*	\$257,106,494	100%	\$255,821,185	100%	\$ (1,285,309)	-0.50%
DISBURSED COLLECTIONS**	\$223,277,704		\$221,862,603		\$ (1,415,101)	-0.63%

* Includes collections on both current support and arrears.

** Includes collections on both current support and arrears; also includes money sent to other states.

SOURCE: NJKiDS (Based on Federal Quarterly Report of Collections - OCSE-34A except Disbursed Collections)

Disbursed Collections obtained from Federal Data Report - OCSE-157, which is reported annually to Congress and used in the calculation of incentive dollars earned by each state.

**TABLE 13:
OFFICE OF
CHILD SUPPORT
SERVICES**

**OFFICE OF CHILD SUPPORT SERVICES
STATE SUMMARY
TITLE IV-D PATERNITY ESTABLISHMENT REPORT**

Comparison of December (FFY 2023 vs. FFY 2024)

County	DECEMBER 2022			DECEMBER 2023			Increase or Decrease (-) from FFY 2023 to FFY 2024
	Total Children Born Out of Wedlock*	Number of Paternities Established	Percent of Paternities Established	Total Children Born Out of Wedlock*	Number of Paternities Established	Percent of Paternities Established	
Atlantic	5,011	4,994	99.7%	4,622	4,605	99.6%	0.0%
Bergen	2,527	2,473	97.9%	2,342	2,287	97.7%	-0.2%
Burlington	3,814	3,749	98.3%	3,476	3,392	97.6%	-0.7%
Camden	12,701	12,403	97.7%	11,666	11,424	97.9%	0.3%
Cape May	913	916	100.3%	827	832	100.6%	0.3%
Cumberland	5,517	5,496	99.6%	5,100	5,044	98.9%	-0.7%
Essex	19,269	18,371	95.3%	17,698	16,899	95.5%	0.1%
Gloucester	3,383	3,353	99.1%	3,080	3,075	99.8%	0.7%
Hudson	7,812	7,549	96.6%	7,203	6,979	96.9%	0.3%
Hunterdon	174	174	100.0%	147	153	104.1%	4.1%
Mercer	5,309	5,145	96.9%	4,733	4,594	97.1%	0.2%
Middlesex	5,065	4,941	97.6%	4,579	4,464	97.5%	-0.1%
Monmouth	3,715	3,625	97.6%	3,227	3,162	98.0%	0.4%
Morris	929	923	99.4%	811	802	98.9%	-0.5%
Ocean	3,881	3,812	98.2%	3,559	3,491	98.1%	-0.1%
Passaic	7,791	7,591	97.4%	6,977	6,826	97.8%	0.4%
Salem	2,355	2,259	95.9%	2,252	2,169	96.3%	0.4%
Somerset	1,036	1,017	98.2%	915	905	98.9%	0.7%
Sussex	399	408	102.3%	376	376	100.0%	-2.3%
Union	8,682	8,308	95.7%	8,156	7,833	96.0%	0.3%
Warren	597	595	99.7%	522	526	100.8%	1.1%
NJ TOTALS	100,880	98,102	97.2%	92,268	89,838	97.4%	0.1%

SOURCE: NJKiDS (Based on Federal Performance Measures - OCSE-157)

* Information on Out of Wedlock Births obtained from NJ Bureau of Vital Statistics

**TABLE 14:
OFFICE OF
CHILD SUPPORT
SERVICES**

**OFFICE OF CHILD SUPPORT SERVICES
STATE SUMMARY
TITLE IV-D REPORT OF CASES WITH ORDERS
Comparison of December (FFY 2023 vs. FFY 2024)**

County	DECEMBER 2022			DECEMBER 2023			Increase or Decrease (-) from FFY 2023 to FFY 2024
	Total Cases	Cases with Orders	% of Cases with Orders	Total Cases	Cases with Orders	% of Cases with Orders	
Atlantic	9,712	9,016	92.8%	9,339	8,546	91.5%	-1.3%
Bergen	10,018	9,727	97.1%	9,623	9,284	96.5%	-0.6%
Burlington	11,040	10,182	92.2%	10,774	9,722	90.2%	-2.0%
Camden	24,184	22,688	93.8%	23,318	21,630	92.8%	-1.1%
Cape May	2,446	2,324	95.0%	2,300	2,190	95.2%	0.2%
Cumberland	10,269	9,707	94.5%	9,901	9,311	94.0%	-0.5%
Essex	33,745	29,302	86.8%	32,571	28,120	86.3%	-0.5%
Gloucester	8,707	8,297	95.3%	8,189	7,816	95.4%	0.2%
Hudson	16,890	15,089	89.3%	16,446	14,499	88.2%	-1.2%
Hunterdon	1,133	1,066	94.1%	1,052	987	93.8%	-0.3%
Mercer	11,210	9,985	89.1%	10,646	9,494	89.2%	0.1%
Middlesex	14,710	13,590	92.4%	14,259	13,030	91.4%	-1.0%
Monmouth	10,727	10,080	94.0%	9,913	9,311	93.9%	0.0%
Morris	4,782	4,643	97.1%	4,568	4,427	96.9%	-0.2%
Ocean	12,135	11,623	95.8%	11,524	11,024	95.7%	-0.1%
Passaic	15,937	13,999	87.8%	15,343	13,541	88.3%	0.4%
Salem	3,572	3,377	94.5%	3,426	3,239	94.5%	0.0%
Somerset	3,782	3,459	91.5%	3,640	3,266	89.7%	-1.7%
Sussex	2,204	2,145	97.3%	2,187	2,151	98.4%	1.0%
Union	15,615	14,731	94.3%	14,982	14,113	94.2%	-0.1%
Warren	2,184	2,077	95.1%	2,078	1,981	95.3%	0.2%
NJ TOTALS	225,002	207,107	92.0%	216,079	197,682	91.5%	-0.6%

SOURCE: NJKiDS (Based on Federal Performance Measures - OCSE-157)

**TABLE 15:
OFFICE OF
CHILD SUPPORT
SERVICES**

**OFFICE OF CHILD SUPPORT SERVICES
STATE SUMMARY
TITLE IV-D COLLECTIONS ON CURRENT SUPPORT**

Comparison of December (FFY 2023 vs. FFY 2024)

County	DECEMBER 2022			DECEMBER 2023			Increase or Decrease (-) from FFY 2023 to FFY 2024
	Total Current Support Due	Total Current Support Distributed	Total Collection Rate	Total Current Support Due	Total Current Support Distributed	Total Collection Rate	
Atlantic	\$3,367,521	\$2,109,383	62.6%	\$3,236,785	\$2,095,158	64.7%	2.1%
Bergen	\$7,181,322	\$5,326,674	74.2%	\$6,911,308	\$5,059,722	73.2%	-1.0%
Burlington	\$4,892,449	\$3,287,430	67.2%	\$4,739,450	\$3,259,596	68.8%	1.6%
Camden	\$7,001,660	\$4,085,850	58.4%	\$6,799,735	\$3,998,838	58.8%	0.5%
Cape May	\$936,340	\$599,922	64.1%	\$878,443	\$590,112	67.2%	3.1%
Cumberland	\$2,723,351	\$1,560,348	57.3%	\$2,657,284	\$1,537,443	57.9%	0.6%
Essex	\$9,373,185	\$5,440,422	58.0%	\$9,179,591	\$5,361,780	58.4%	0.4%
Gloucester	\$3,636,897	\$2,356,236	64.8%	\$3,473,076	\$2,253,798	64.9%	0.1%
Hudson	\$6,556,486	\$4,227,134	64.5%	\$6,427,482	\$4,041,378	62.9%	-1.6%
Hunterdon	\$957,617	\$832,836	87.0%	\$892,436	\$750,687	84.1%	-2.9%
Mercer	\$3,560,054	\$2,237,088	62.8%	\$3,547,117	\$2,234,391	63.0%	0.2%
Middlesex	\$6,506,336	\$4,413,751	67.8%	\$6,500,629	\$4,427,956	68.1%	0.3%
Monmouth	\$5,868,614	\$4,212,075	71.8%	\$5,450,475	\$3,962,002	72.7%	0.9%
Morris	\$3,731,592	\$2,732,667	73.2%	\$3,572,348	\$2,591,967	72.6%	-0.7%
Ocean	\$5,682,039	\$3,974,480	69.9%	\$5,459,462	\$3,798,587	69.6%	-0.4%
Passaic	\$5,579,552	\$3,519,560	63.1%	\$5,516,147	\$3,423,984	62.1%	-1.0%
Salem	\$1,035,721	\$603,291	58.2%	\$981,368	\$587,182	59.8%	1.6%
Somerset	\$2,380,920	\$1,910,734	80.3%	\$2,283,032	\$1,802,457	79.0%	-1.3%
Sussex	\$1,514,467	\$1,133,713	74.9%	\$1,427,330	\$1,058,781	74.2%	-0.7%
Union	\$6,217,109	\$4,135,029	66.5%	\$6,146,408	\$4,032,722	65.6%	-0.9%
Warren	\$1,068,725	\$787,685	73.7%	\$1,041,578	\$789,287	75.8%	2.1%
NJ TOTALS	\$89,771,956	\$59,486,308	66.3%	\$87,121,482	\$57,657,828	66.2%	-0.1%

SOURCE: NJKiDS (Based on Federal Performance Measures - OCSE-157)

**TABLE 16:
OFFICE OF
CHILD SUPPORT
SERVICES**

**OFFICE OF CHILD SUPPORT SERVICES
STATE SUMMARY
TITLE IV-D CASES ARREARS COLLECTION REPORT**

Comparison of December (FFY 2023 vs. FFY 2024)

County	DECEMBER 2022			DECEMBER 2023			Increase or Decrease (-) from FFY 2023 to FFY 2024
	Total Cases with Arrears	Total Amount Collected	Average Arrears Collection per Case	Total Cases with Arrears	Total Amount Collected	Average Arrears Collection per Case	
Atlantic	6,015	\$513,783	\$85.42	5,768	\$477,645	\$82.81	-\$2.61
Bergen	6,369	\$1,137,005	\$178.52	6,235	\$939,159	\$150.63	-\$27.89
Burlington	6,669	\$810,979	\$121.60	6,511	\$678,388	\$104.19	-\$17.41
Camden	13,750	\$1,254,787	\$91.26	13,274	\$978,765	\$73.74	-\$17.52
Cape May	1,566	\$119,400	\$76.25	1,521	\$144,183	\$94.79	\$18.55
Cumberland	5,977	\$428,463	\$71.69	5,821	\$445,693	\$76.57	\$4.88
Essex	17,857	\$1,878,921	\$105.22	17,220	\$1,740,335	\$101.06	-\$4.16
Gloucester	5,416	\$560,076	\$103.41	5,237	\$649,816	\$124.08	\$20.67
Hudson	10,342	\$947,455	\$91.61	9,982	\$960,300	\$96.20	\$4.59
Hunterdon	673	\$120,528	\$179.09	615	\$118,745	\$193.08	\$13.99
Mercer	6,659	\$691,005	\$103.77	6,576	\$727,284	\$110.60	\$6.83
Middlesex	8,913	\$1,094,023	\$122.74	8,768	\$1,097,793	\$125.20	\$2.46
Monmouth	6,461	\$931,353	\$144.15	6,160	\$900,699	\$146.22	\$2.07
Morris	3,085	\$467,365	\$151.50	3,029	\$490,732	\$162.01	\$10.52
Ocean	7,177	\$770,159	\$107.31	7,046	\$658,595	\$93.47	-\$13.84
Passaic	9,387	\$961,961	\$102.48	9,234	\$898,089	\$97.26	-\$5.22
Salem	2,057	\$199,080	\$96.78	1,945	\$141,474	\$72.74	-\$24.04
Somerset	2,243	\$335,914	\$149.76	2,187	\$323,731	\$148.03	-\$1.74
Sussex	1,416	\$183,281	\$129.44	1,372	\$211,343	\$154.04	\$24.60
Union	9,534	\$1,108,736	\$116.29	9,302	\$1,075,851	\$115.66	-\$0.63
Warren	1,373	\$137,790	\$100.36	1,341	\$124,346	\$92.73	-\$7.63
NJ TOTALS	132,939	\$14,652,064	\$110.22	129,144	\$13,782,966	\$106.73	-\$3.49

SOURCE: OCSE-157 Child Support Enforcement Annual Data Report

Table 17**WORK FIRST NEW JERSEY STATISTICAL SUMMARY****WFNJ****DECEMBER 2023**

COUNTY	EMPLOYMENT DIRECTED ACTIVITIES			EMPLOYED OPEN (WFNJ RECIPIENT)	SUPPORT SERVICES ON ACTIVE CASE		CLOSED FOR EMPLOYMENT THIS MONTH	POST ASSISTANCE CHILD CARE
	CWEP	ALL OTHER TRAINING	JOB SEARCH		CHILD CARE	TRAINING REL. EXPENSES		
ATLANTIC	23	67	0	25	21	63	9	17
BERGEN	38	3	48	20	56	22	12	5
BURLINGTON	166	6	64	32	34	15	5	7
CAMDEN	27	172	7	44	74	5	19	1
CAPE MAY	0	4	5	3	4	4	0	2
CUMBERLAND	0	21	8	12	13	39	5	6
ESSEX	126	156	29	134	122	184	40	50
GLOUCESTER	0	4	5	32	6	1	4	18
HUDSON	3	312	58	110	241	116	29	30
HUNTERDON	0	0	0	0	1	0	0	2
MERCER	94	144	17	60	115	44	21	55
MIDDLESEX	0	37	52	26	55	0	9	3
MONMOUTH	7	15	5	23	19	7	5	33
MORRIS	0	8	0	2	1	0	4	0
OCEAN	0	115	0	2	8	11	0	12
PASSAIC	27	69	0	12	37	27	15	4
SALEM	0	9	4	5	4	3	1	3
SOMERSET	51	16	30	16	32	33	9	0
SUSSEX	0	0	6	3	0	1	3	1
UNION	14	33	0	10	18	0	9	0
WARREN	0	4	1	4	1	0	1	1
STATE TOTAL	576	1,195	339	575	862	575	200	250

Data is derived from NJ Division of Family Development's FAMIS Reports RM064-01 & RM703-51, AdHoc Reports 5549 & 5598 and SDW Report WR00022WZ_CC

**DIVISION OF FAMILY DEVELOPMENT CURRENT PROGRAM STATISTICS
DECEMBER 2023**

ACRONYMS

EMERGENCY ASSISTANCE (EA) - Payments to those eligible for WFNJ/TANF or WFNJ/GA, authorized during the 30 consecutive days immediately following the emergency (defined as a substantial loss of shelter, food, clothing, or household furnishings by fire, flood or other similar disaster) or if eligible individual or family is in an imminent or actual state of homelessness.

NJ SNAP - Formerly the Food Stamp Program, now known as NJ SNAP (NJ Supplemental Nutrition Assistance Program) authorized by Congress as a nutritional supplement program to provide low income households with more food of greater variety and better nutrition. Program eligibility is based on household income, resources, and expenses for medical, shelter, and dependent care. CWA staff refers certain recipients to the New Jersey Department of Labor for participation in the Food Stamp Employment and Training Program.

FAMIS: Family Assistance Management Information System

GAAS: General Assistance Automated System

NJKiDS: New Jersey Kids Deserve Support (Child Support Information Management System)

NJ MMIS SHARED DATA WAREHOUSE: The Shared Data Warehouse (SDW) is the repository for New Jersey's DFD and Medicaid data. Since 2003, OptumInsight has administered the SDW and provided access to the data through a reporting tool known as Business Objects.

OMEGA: Online Management of Economic Goal Achievement

SSI-EA: Supplemental Security Income-Emergency Assistance

WFNJ: Work First New Jersey - Fully implemented July 1, 1997, this is New Jersey's welfare reform program which responds to the requirements of the Federal Personal Responsibility and Work Opportunity Reconciliation Act (**PRWORA**) of 1996. PRWORA established Temporary Assistance for Needy Families (**TANF**) as the replacement for AFDC cash assistance. WFNJ includes two segments, **WFNJ/TANF** for families with children, and **WFNJ/GA** (General Assistance) for single adults and couples without dependent children. WFNJ emphasizes achieving self-sufficiency and limits lifetime receipt of financial assistance to a total of five years.

**DIVISION OF FAMILY DEVELOPMENT CURRENT PROGRAM STATISTICS
DECEMBER 2023**

EXPLANATORY NOTES

The Department of Human Services Division of Family Development provides basic income and an opportunity to achieve self-sufficiency for individuals and families served by the Division's programs. The Division provides leadership, direction and supervision to those public agencies responsible for administering those programs and plans for and develops policies to promote self-sufficiency.

WFNJ STATISTICAL SUMMARY (TABLE 17)

Employment Directed Activities (EDA) - From Activities Summary Report (OMEGA report # RM064). Unduplicated count of persons participating in Community Work Experience Program (CWEP), All Other Training, or Job Search.

Number of Persons Employed This Month, Still Receiving TANF - Individuals with open "empl" activity on OMEGA. Ad hoc report.

Participants Receiving Child Care Services - From Issuance Disbursement Summary (OMEGA report # RM703). Total number of active participants who show receipt of Child Care.

Number of Persons Closed on FAMIS Due to Employment - From FAMIS report #5549-RM-2

Post TANF and Receiving Child Care - Persons no longer in receipt of TANF but still receiving child care. From Share Data Warehouse Child Care case count based on Child Care payments (SDW report WR00022WZ_CC).