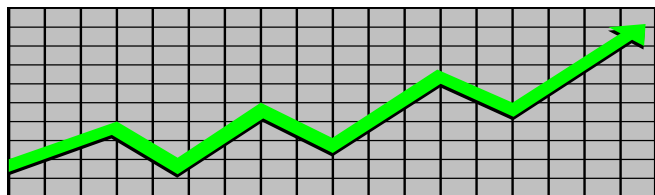


**State of New Jersey  
Department of Human Services  
Division of Family Development**

---

# **CURRENT PROGRAM STATISTICS**



---

**February 2023**  
**Natasha Johnson, Assistant Commissioner**

## **TABLE OF CONTENTS**

### **HIGHLIGHTS:**

<b>WFNJ/TANF</b> .....	<b>ii</b>
<b>NJ SNAP</b> .....	<b>ii</b>
<b>EMERGENCY ASSISTANCE</b> .....	<b>ii</b>
<b>GENERAL ASSISTANCE</b> .....	<b>iii</b>
GA Emergency Assistance.....	iii
GA Program.....	iii
<b>CHILD SUPPORT SERVICES</b> .....	<b>iii</b>
<b>WORK FIRST NEW JERSEY (WFNJ)</b> .....	<b>iii</b>
<b>STATISTICS- BY STATE &amp; COUNTY</b> .....	<b>1</b>
Table 1: WFNJ/TANF Families & Persons (NJ Statewide) February 2021 to 2023.....	1
Table 2: WFNJ/TANF Families (by County)- February 2023.....	2
Table 2B: WFNJ/TANF Persons, Adults, & Children (by County)- February 2023.....	3
Table 3: TANF Work Participation Rates Over 12 Month Period (by County)- February 2023.....	4
Table 4: TANF Work Participation Rates Over 12 Month Period (NJ Statewide)- February 2023.....	5
Table 5: NJ SNAP Households/Persons (NJ Statewide) February 2021 to 2023.....	6
Table 6: NJ SNAP Recipient Trends (NJ Statewide) February 2021 to 2023.....	7
Table 7: NJ SNAP Households/Persons (by County)- February 2023.....	8
Table 8: Emergency Assistance Program (NJ Statewide) February 2021 to 2023.....	9
Table 9: Emergency Assistance Program (by County)- February 2023.....	10
Table 10: General Assistance Program (NJ Statewide) February 2021 to 2023.....	11
Table 11: General Assistance Program (by County)- February 2023.....	12
Table 12: Child Support Services Distributions (NJ Statewide) FFY 2023.....	13
Table 13: Child Support Services Paternities Established- February 2023.....	14
Table 14: Child Support Services Cases With Orders- February 2023.....	15
Table 15: Child Support Services Collections On Current Support- February 2023.....	16
Table 16: Child Support Services Cases With Payments On Arrears- February 2023.....	17
Table 17: WFNJ Statistical Summary- February 2023.....	18
<b>ACRONYMS</b> .....	<b>19</b>
<b>EXPLANATORY NOTES</b> .....	<b>20</b>
WFNJ Statistical Summary (Table 17).....	20

## **DIVISION OF FAMILY DEVELOPMENT CURRENT PROGRAM STATISTICS FEBRUARY 2023**

---

Each month the Division of Family Development publishes its program statistics for: WFNJ/TANF, NJ SNAP, Emergency Assistance, General Assistance, and Child Support Services. When possible, information is provided separately for children and adults. Many tables also provide trend data with information broken down by county for readers to consider. This report is compiled and prepared by The Bureau of Research & Reporting.

---

### **WFNJ/TANF**

- As of the end of February, the TANF caseload had increased by 989 cases, from 10,113 in February 2022 to 11,102 in February 2023; an increase of 9.8%.
- The counties with caseloads that increased the most since February 2022 were Bergen (67.3%), Sussex (59.1%), and Union (38%).
- The counties with caseloads that decreased the most since February 2022 were Warren (-15.3%), Hunterdon (-8.9%), and Passaic (-6.8%).
- Of the WFNJ/TANF cases, 2,531 or 22.8% were child-only in February 2023.
- The counties with the most child-only cases were Camden (431), Hudson (310), and Essex (259).
- Hudson (4,636), Essex (4,098), and Camden (4,004) counties had the greatest number of persons receiving TANF in February 2023.

### **NJ SNAP (Formerly FOOD STAMPS)**

- In February 2023, there were 399,019 households receiving NJ SNAP benefits. The number of NJ SNAP households decreased by 63,200 or -13.7%, since February 2022.
- There were 774,604 persons receiving NJ SNAP benefits as of February 2023; a decrease of 114,288 or -12.9% since February 2022.
- The counties having the highest SNAP caseload increase since February 2022 were Warren (6.3%), Mercer (4.9%), and Hunterdon and Ocean (4.4%).
- The counties having the highest SNAP caseload decrease since February 2022 were Hudson (-25.6%), Union (-25.3%), and Passaic (-22.4%).

### **EMERGENCY ASSISTANCE**

- There were 1,291 TANF families receiving Emergency Assistance (EA) in February 2023; an increase of 73 or 6% since February 2022.
- In February 2023, EA payments were made for 511 SSI recipients.

## **DIVISION OF FAMILY DEVELOPMENT CURRENT PROGRAM STATISTICS FEBRUARY 2023**

- There were 1,740 GA cases with Emergency Assistance payments in February 2023; a decrease of 113 or -6.1% since February 2022.
- The counties that showed the highest percent increase in Emergency Assistance payments were Cumberland (750%), Gloucester (50%), and Union (31.9%).
- The counties that showed the highest percent decrease in Emergency Assistance payments were Sussex (-87.5%), Salem (-71.4%), and Passaic (-41.5%).

### **GENERAL ASSISTANCE**

- The total numbers of cases receiving GA has decreased from 14,499 to 9,971 since February 2022; a decrease of -31.2%.
- There were 6,563 Employable GA and 3,408 Unemployable GA cases in February 2023.
- The counties that showed a percent increase for GA cases were Somerset (4.5%) and Gloucester (3.5%) since February 2022.
- The counties that showed the highest percent decrease for GA cases since February 2022 were Passaic (-56.6%), Hudson (-54.6%), and Essex (-42.7%).
- In February 2023, GA cases showed a -2.31% decrease since January 2023.

### **CHILD SUPPORT SERVICES (QUARTERLY REPORT)**

- The total collection for the Child Support Services Program was about \$257 million from October 2022 to December 2022; a decrease of -4.95% over the same period from FFY 2022.
- Total distributions decreased -5.4% from December 2021.

### **WORK FIRST NEW JERSEY (WFNJ)**

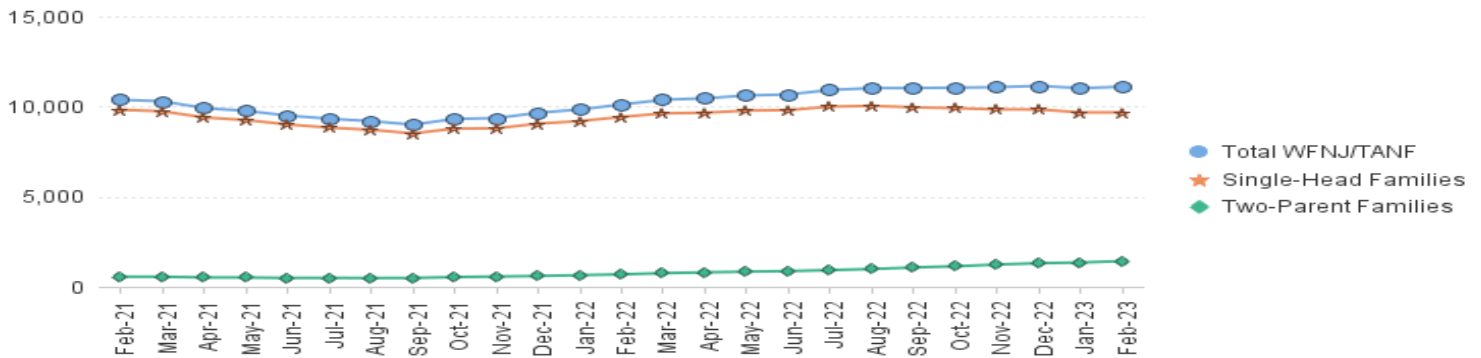
- During the report month of February 2023, there were 492 families in which at least one member was employed and an additional 118 families whose WFNJ assistance cases were closed due to employment - related earnings.
- The three counties with the greatest number of employed active WFNJ recipients were: Hudson (101), Essex (78), and Camden (61).
- There were 217 former TANF cases receiving post-TANF support in the form of child care assistance.

TABLE 1: WFNJ/TANF PROGRAM

STATEWIDE NUMBER OF APPLICATIONS AND TERMINATIONS DURING FEBRUARY 2023  
 NUMBER OF ELIGIBLE FAMILIES & PERSONS RECEIVING WFNJ/TANF FOR FEBRUARY 2023

FEBRUARY 2021 THROUGH FEBRUARY 2023												
	Cases Added	Cases Closed	Child-Only Cases ‡	Total Single-Head Families	2-Parent Families	Total WFNJ/TANF Families	%CHNG (1 Yr.)	Total Persons	%CHNG (1 Yr.)	Adults	Children	
2021	FEB	378	504	3,347	9,818	559	10,377	-4.1%	26,520	-3.6%	7,589	18,931
	MAR	397	481	3,311	9,735	557	10,292	-3.9%	26,335	-3.2%	7,538	18,797
	APR	298	704	3,224	9,395	518	9,913	-11.8%	25,276	-12.1%	7,207	18,069
	MAY	264	510	3,209	9,250	513	9,763	-18.0%	24,858	-19.1%	7,067	17,791
	JUN	373	636	3,141	9,008	489	9,497	-21.8%	24,146	-23.0%	6,845	17,301
	JUL	391	590	3,068	8,829	493	9,322	-23.0%	23,785	-23.8%	6,747	17,038
	AUG	415	544	3,029	8,709	482	9,191	-22.4%	23,445	-23.0%	6,644	16,801
	SEP	388	588	2,945	8,507	489	8,996	-22.0%	23,009	-22.1%	6,540	16,469
	OCT	833	564	2,921	8,779	538	9,317	-16.7%	23,888	-16.6%	6,934	16,954
	NOV	656	614	2,816	8,791	568	9,359	-13.6%	24,282	-12.5%	7,111	17,171
	DEC	702	432	2,824	9,054	601	9,655	-9.6%	25,177	-8.0%	7,432	17,745
	<b>2021 Average</b>	<b>458</b>	<b>563</b>	<b>3,101</b>	<b>9,151</b>	<b>532</b>	<b>9,683</b>		<b>24,807</b>		<b>7,114</b>	<b>17,693</b>
2022	JAN	667	484	2,796	9,193	645	9,838	-6.4%	25,789	-4.3%	7,687	18,102
	FEB	655	414	2,794	9,424	689	10,113	-2.5%	26,638	0.4%	8,008	18,630
	MAR	715	512	2,804	9,623	756	10,379	0.8%	27,433	4.2%	8,331	19,102
	APR	644	622	2,743	9,656	802	10,458	5.5%	27,749	9.8%	8,517	19,232
	MAY	632	475	2,723	9,777	838	10,615	8.7%	28,183	13.4%	8,730	19,453
	JUN	622	599	2,718	9,802	869	10,671	12.4%	28,287	17.1%	8,822	19,465
	JUL	679	518	2,715	9,998	925	10,923	17.2%	29,043	22.1%	9,133	19,910
	AUG	713	609	2,687	10,037	987	11,024	19.9%	29,453	25.6%	9,324	20,129
	SEP	755	808	2,651	9,959	1,070	11,029	22.6%	29,486	28.1%	9,448	20,038
	OCT	753	821	2,626	9,910	1,139	11,049	18.6%	29,606	23.9%	9,562	20,044
	NOV	801	822	2,573	9,843	1,234	11,077	18.4%	29,858	23.0%	9,738	20,120
	DEC	747	792	2,578	9,837	1,308	11,145	15.4%	30,064	19.4%	9,875	20,189
<b>2022 Average</b>	<b>699</b>	<b>623</b>	<b>2,701</b>	<b>9,755</b>	<b>939</b>	<b>10,693</b>		<b>28,466</b>		<b>8,931</b>	<b>19,535</b>	
2023	JAN	669	792	2,560	9,674	1,346	11,020	12.0%	29,683	15.1%	9,806	19,877
	FEB	760	717	2,531	9,676	1,426	11,102	9.8%	30,019	12.7%	9,997	20,022
<b>2023 Average to Date</b>	<b>715</b>	<b>755</b>	<b>2,546</b>	<b>9,675</b>	<b>1,386</b>	<b>11,061</b>		<b>29,851</b>		<b>9,902</b>	<b>19,950</b>	

NJ STATEWIDE  
 Eligible Families Receiving WFNJ/TANF  
 FEBRUARY 2021 THROUGH FEBRUARY 2023

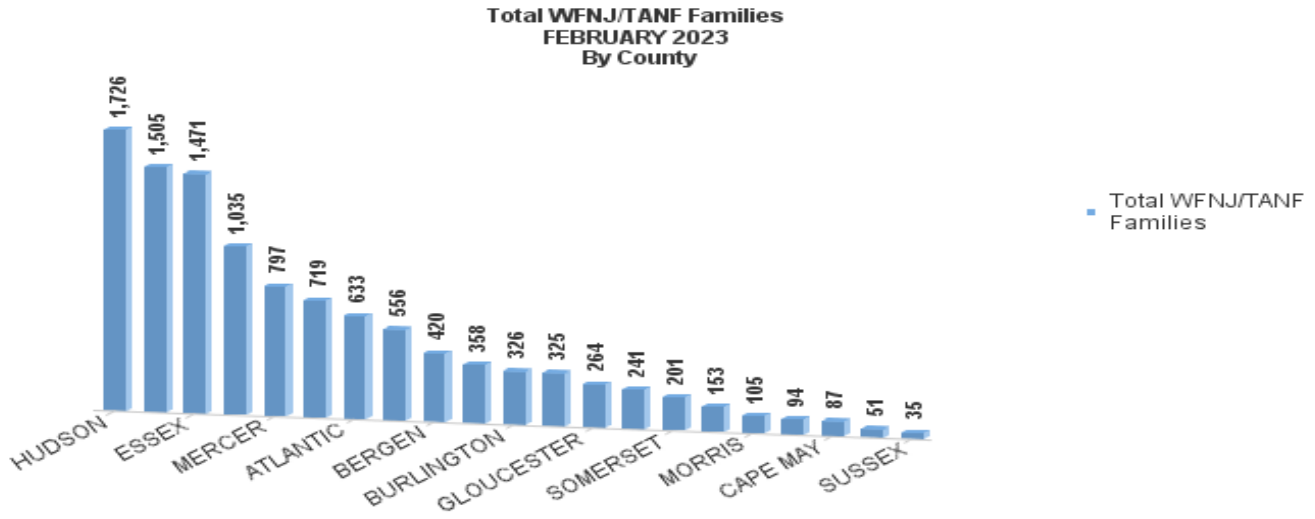


Data is derived from NJ MMIS Shared Data Warehouse Issuance files.  
 Effective July 2013 this data query source was converted to the SDW

‡ Child-only cases are defined as families in which no eligible adult receives TANF program benefits, yet the family continues to be headed by at least one of the biological parents, or grandparents, or other appropriate adult.

**TABLE 2:**  
**WFNJ/TANF PROGRAM**      **NUMBER OF APPLICATIONS AND TERMINATIONS BY COUNTY DURING FEBRUARY 2023**  
**NUMBER OF ELIGIBLE FAMILIES RECEIVING WFNJ/TANF FOR FEBRUARY 2023**

County	Cases Added	Cases Closed **	Child-	Total		Total		%CHNG (3 Mon)	%CHNG (1 Yr.)
			Only Cases ‡	1-Adult Cases	Single-Head Families	2-Parent Families	WFNJ/TANF Families		
ATLANTIC	36	33	194	386	580	53	633	-3.1%	-6.5%
BERGEN	25	22	64	270	334	86	420	3.2%	67.3% Δ
BURLINGTON	12	33	90	215	305	21	326	-5.2%	-1.5%
CAMDEN	67	98	431	956	1,387	118	1,505	-3.0%	6.4%
CAPE MAY	11	5	27	52	79	8	87	14.5%	8.8%
CUMBERLAND	25	25	104	183	287	38	325	3.2%	12.8%
ESSEX	105	64	259	907	1,166	305	1,471	4.6%	22.9%
GLOUCESTER	18	16	70	172	242	22	264	-1.9%	-0.8%
HUDSON	185	132	310	1,184	1,494	232	1,726	2.6%	6.9%
HUNTERDON	4	1	5	38	43	8	51	4.1%	-8.9% *
MERCER	34	53	203	517	720	77	797	-3.5%	26.5%
MIDDLESEX	43	50	167	334	501	55	556	-3.8%	-6.4%
MONMOUTH	17	17	58	165	223	18	241	-2.0%	19.3%
MORRIS	9	12	13	75	88	17	105	-2.8%	29.6%
OCEAN	29	25	63	252	315	43	358	-2.5%	11.2%
PASSAIC	31	41	257	714	971	64	1,035	-3.5%	-6.8% *
SALEM	11	16	35	105	140	13	153	-10.0%	2.7%
SOMERSET	18	27	36	145	181	20	201	-7.4%	3.1%
SUSSEX	5	3	7	21	28	7	35	20.7%	59.1% Δ
UNION	67	36	118	389	507	212	719	5.9%	38.0% Δ
WARREN	8	8	20	65	85	9	94	-6.0%	-15.3% *
<b>NJ Total</b>	<b>760</b>	<b>717</b>	<b>2,531</b>	<b>7,145</b>	<b>9,676</b>	<b>1,426</b>	<b>11,102</b>	<b>-0.4%</b>	<b>9.8%</b>



Data is derived from NJ MMIS Shared Data Warehouse Issuance files.  
 Effective July 2013 this data query source was converted to the SDW

‡ Child-only cases are defined as families in which no eligible adult receives TANF program benefits, yet the family continues to be headed by at least one of the biological parents, or grandparents, or other appropriate adult

\*\* 'Cases closed' include cases that received a benefit in the prior month, but did not receive any TANF benefit for the report month.  
 Δ=higher caseload % change      \*=lower caseload % change

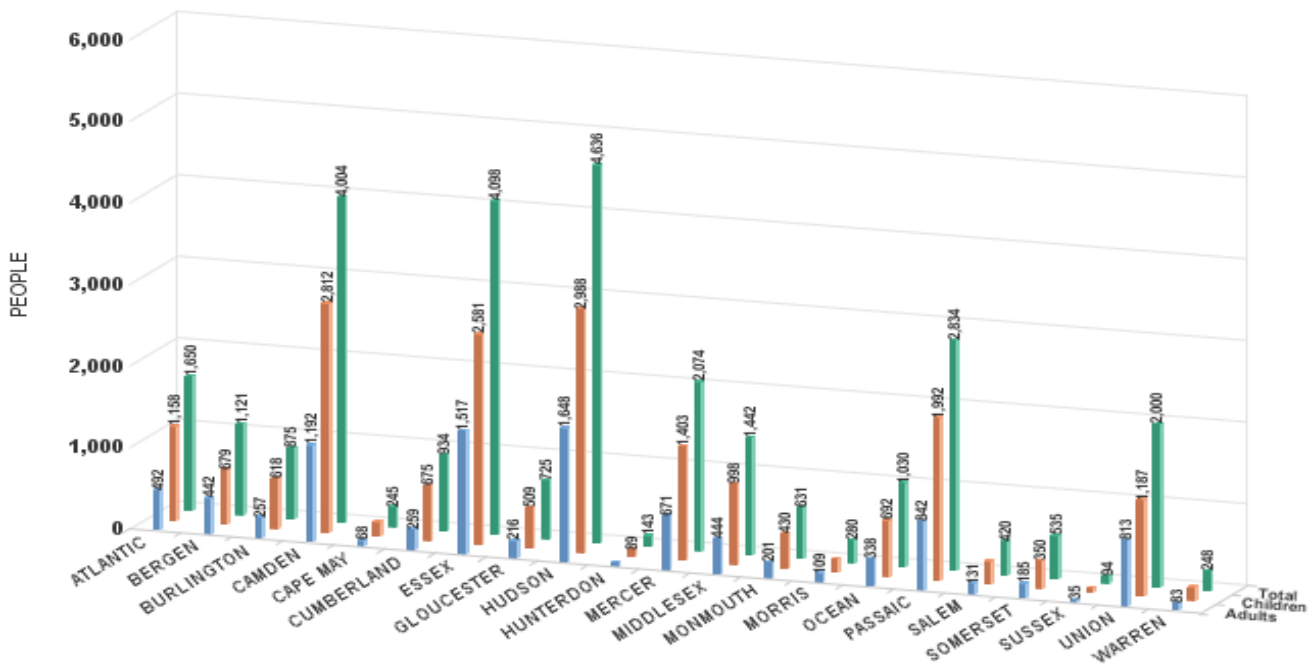
**TABLE 2B :  
WFNJ/TANF  
PROGRAM** **NUMBER OF PARTICIPATING PERSONS, ADULTS, AND CHILDREN  
BY COUNTY FOR FEBRUARY 2023**

**PERSONS**

County	Adults	Children	Child/Adult Ratio	Total Persons	% Chng (1 Yr)	Persons Per Case
ATLANTIC	492	1,158	2.35	1,650	-4.7%	2.61
BERGEN	442	679	1.54	1,121	74.9% Δ	2.67
BURLINGTON	257	618	2.40	875	3.7%	2.68
CAMDEN	1,192	2,812	2.36	4,004	9.0%	2.66
CAPE MAY	68	177	2.60	245	19.5%	2.82
CUMBERLAND	259	675	2.61	934	12.3%	2.87
ESSEX	1,517	2,581	1.70	4,098	28.5%	2.79
GLOUCESTER	216	509	2.36	725	3.7%	2.75
HUDSON	1,648	2,988	1.81	4,636	8.8%	2.69
HUNTERDON	54	89	1.65	143	-10.6% *	2.80
MERCER	671	1,403	2.09	2,074	29.6%	2.60
MIDDLESEX	444	998	2.25	1,442	-4.5%	2.59
MONMOUTH	201	430	2.14	631	26.5%	2.62
MORRIS	109	171	1.57	280	39.3%	2.67
OCEAN	338	692	2.05	1,030	17.3%	2.88
PASSAIC	842	1,992	2.37	2,834	-7.2% *	2.74
SALEM	131	289	2.21	420	4.5%	2.75
SOMERSET	185	350	1.89	535	3.9%	2.66
SUSSEX	35	59	1.69	94	77.4% Δ	2.69
UNION	813	1,187	1.46	2,000	43.1% Δ	2.78
WARREN	83	165	1.99	248	-15.9% *	2.64
<b>NJ Total</b>	<b>9,997</b>	<b>20,022</b>	<b>2.00</b>	<b>30,019</b>	<b>12.7%</b>	<b>2.70</b>

Δ=higher caseload % change

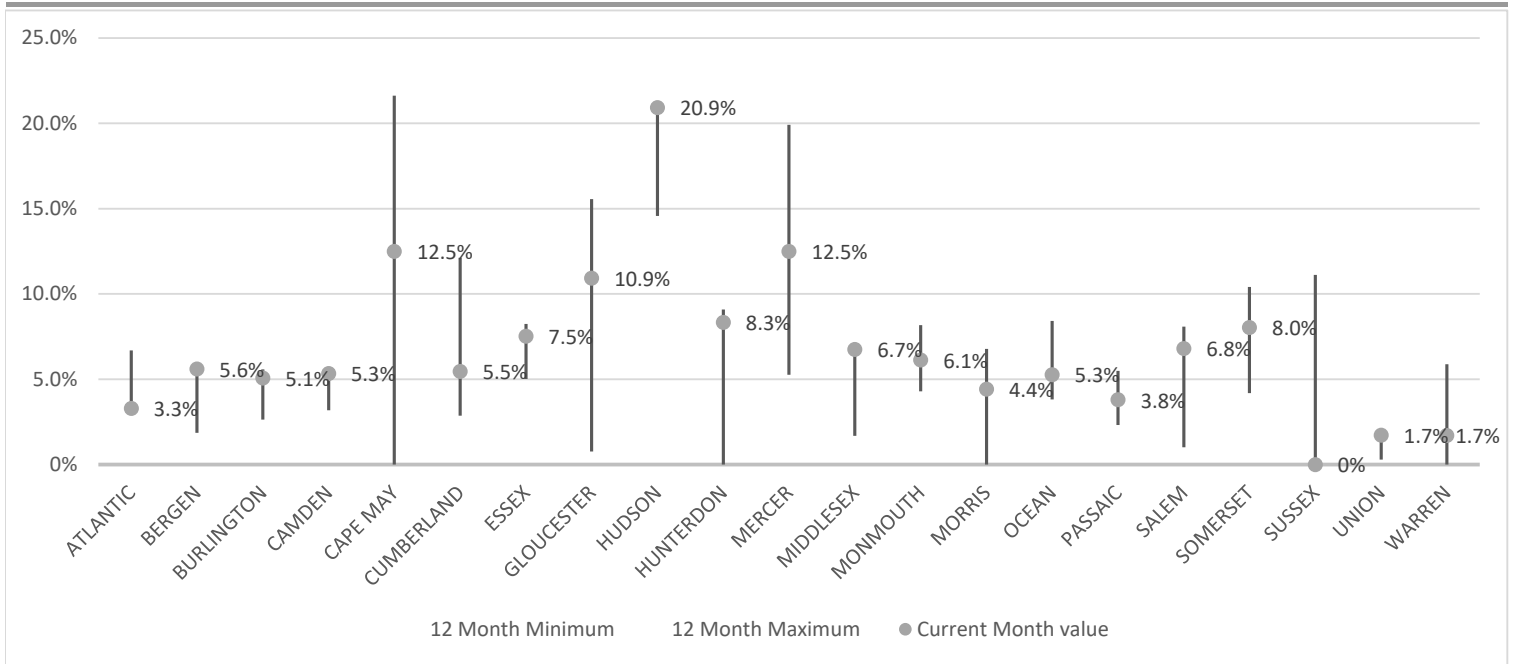
\*=lower caseload % change



Data is derived from NJ MMIS Shared Data Warehouse Issuance files.  
Effective July 2013 this data query source was converted to the SDW

TABLE 3 :

Work Participation Rates Achieved Over 12 Month Period  
Ending with FEBRUARY 2023

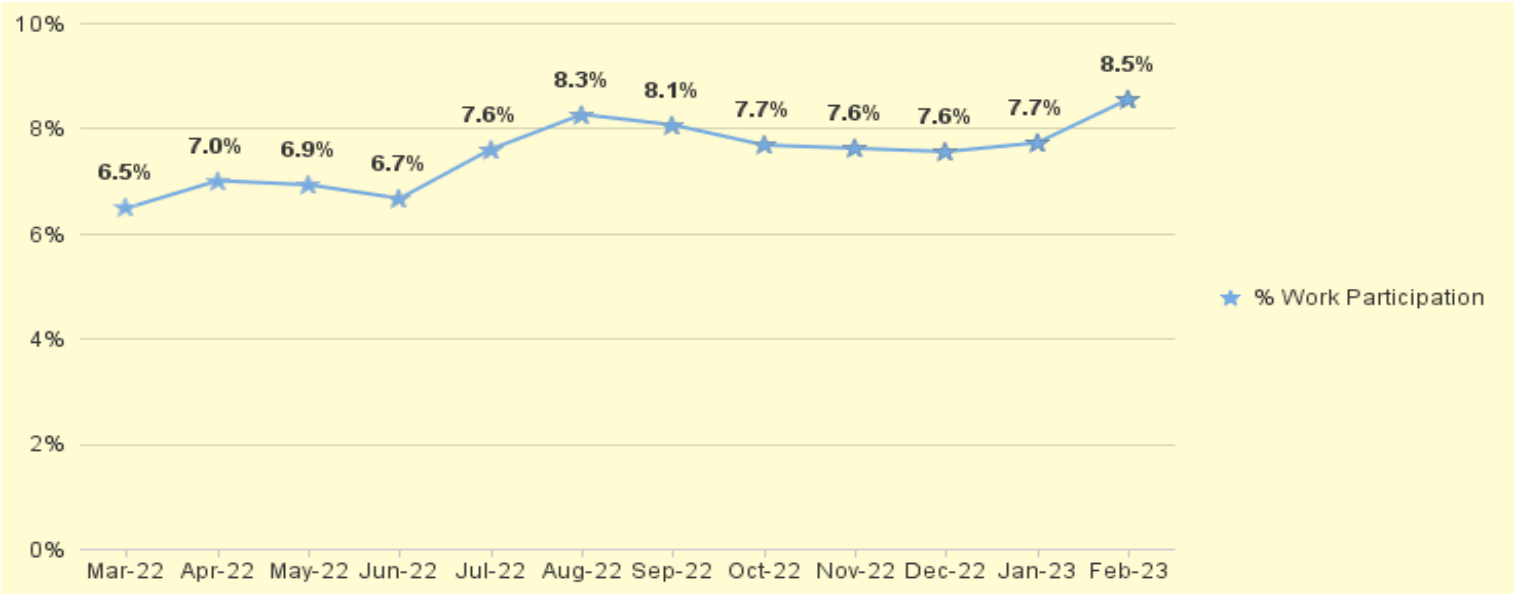


Data is derived from NJ MMIS Shared Data Warehouse Issuance files.  
Effective July 2013 this data query source was converted to the SDW



TABLE 4 :

WFNJ/TANF Work Participation Rates  
for 12-Month Period Ending with FEBRUARY 2023 Statewide



\* The Work Participation rate measures the number of countable Temporary Assistance for Needs Families (TANF) participants based on federal formula. The reported rate is considered to be preliminary until officially calculated by the federal government soon after the close of each federal fiscal year.

TABLE 5: NJ SNAP (FOOD STAMPS)

NUMBER OF PARTICIPATING HOUSEHOLDS, PERSONS, ADULTS AND CHILDREN FOR FEBRUARY 2023 (STATEWIDE)

FEBRUARY 2021 THROUGH FEBRUARY 2023

	HOUSEHOLDS				PERSONS				Age 60+	People with a disability
	WFNJ/TANF	Other low income	Total	% CHNG (1 YR)	Adults	Children	TOTAL	% CHNG (1 YR)		
<b>2021</b>										
FEB	9,980	413,080	<b>423,060</b>	25.6%	459,801	362,760	<b>822,561</b>	24.4%	123,888	221,585
MAR	9,632	418,259	<b>427,891</b>	27.7%	465,302	366,223	<b>831,525</b>	26.5%	124,614	222,961
APR	9,474	423,186	<b>432,660</b>	24.3%	470,412	369,625	<b>840,037</b>	23.0%	125,182	224,256
MAY	9,371	428,961	<b>438,332</b>	19.9%	476,827	373,151	<b>849,978</b>	18.4%	125,750	225,339
JUN	9,833	440,525	<b>450,358</b>	21.8%	490,430	393,310	<b>883,740</b>	21.8%	126,085	227,479
JUL	9,067	437,889	<b>446,956</b>	18.8%	485,975	379,528	<b>865,503</b>	17.8%	126,552	227,352
AUG	9,070	442,333	<b>451,403</b>	17.4%	490,577	383,106	<b>873,683</b>	16.7%	127,091	228,513
SEP	9,561	447,902	<b>457,463</b>	15.8%	497,122	390,345	<b>887,467</b>	15.4%	127,550	229,863
OCT	9,822	452,139	<b>461,961</b>	14.3%	502,415	388,925	<b>891,340</b>	13.1%	128,700	231,751
NOV	9,967	455,343	<b>465,310</b>	14.5%	506,476	391,904	<b>898,380</b>	13.6%	129,292	233,050
DEC	10,138	458,239	<b>468,377</b>	13.8%	510,116	392,757	<b>902,873</b>	12.8%	129,744	238,680
<b>2021 Average</b>	<b>9,677</b>	<b>435,576</b>	<b>445,253</b>		<b>484,197</b>	<b>379,344</b>	<b>863,541</b>		<b>126,517</b>	<b>227,663</b>
<b>2022</b>										
JAN	10,418	457,935	<b>468,353</b>	11.7%	509,801	392,651	<b>902,452</b>	10.7%	157,425	236,238
FEB	10,486	451,733	<b>462,219</b>	9.3%	503,693	385,199	<b>888,892</b>	8.1%	156,540	232,864
MAR	10,588	455,766	<b>466,354</b>	9.0%	508,290	388,977	<b>897,267</b>	7.9%	158,331	234,617
APR	10,706	439,659	<b>450,365</b>	4.1%	491,276	375,105	<b>866,381</b>	3.1%	156,504	231,071
MAY	10,669	423,672	<b>434,341</b>	-0.9%	474,542	360,324	<b>834,866</b>	-1.8%	154,816	227,400
JUN	10,650	412,366	<b>423,016</b>	-6.1%	462,757	351,378	<b>814,135</b>	-7.9%	154,107	225,452
JUL	10,910	400,990	<b>411,900</b>	-7.8%	451,428	343,730	<b>795,158</b>	-8.1%	152,494	222,166
AUG	12,919	421,433	<b>434,352</b>	-3.8%	475,405	401,190	<b>876,595</b>	0.3%	151,643	224,286
SEP	11,543	391,350	<b>402,893</b>	-11.9%	440,973	348,303	<b>789,276</b>	-11.1%	150,801	220,166
OCT	11,175	384,016	<b>395,191</b>	-14.5%	433,352	329,837	<b>763,189</b>	-14.4%	152,434	220,723
NOV	10,978	386,385	<b>397,363</b>	-14.6%	436,125	332,459	<b>768,584</b>	-14.4%	153,574	221,980
DEC	11,094	393,042	<b>404,136</b>	-13.7%	443,837	340,993	<b>784,830</b>	-13.1%	155,061	227,586
<b>2022 Average</b>	<b>11,011</b>	<b>418,196</b>	<b>429,207</b>		<b>469,290</b>	<b>362,512</b>	<b>831,802</b>		<b>154,511</b>	<b>227,191</b>
<b>2023</b>										
JAN	11,120	388,312	<b>399,432</b>	-14.7%	438,140	336,442	<b>774,582</b>	-14.2%	153,633	223,462
FEB	10,806	388,213	<b>399,019</b>	-13.7%	437,832	336,772	<b>774,604</b>	-12.9%	154,374	223,539
<b>2023 Average To Date</b>	<b>10,963</b>	<b>388,263</b>	<b>399,226</b>		<b>437,986</b>	<b>336,607</b>	<b>774,593</b>		<b>154,004</b>	<b>223,501</b>

This Table is based on those Households & Persons that received SNAP issuances (benefits) during the month

Data is derived from NJ MMIS Shared Data Warehouse.

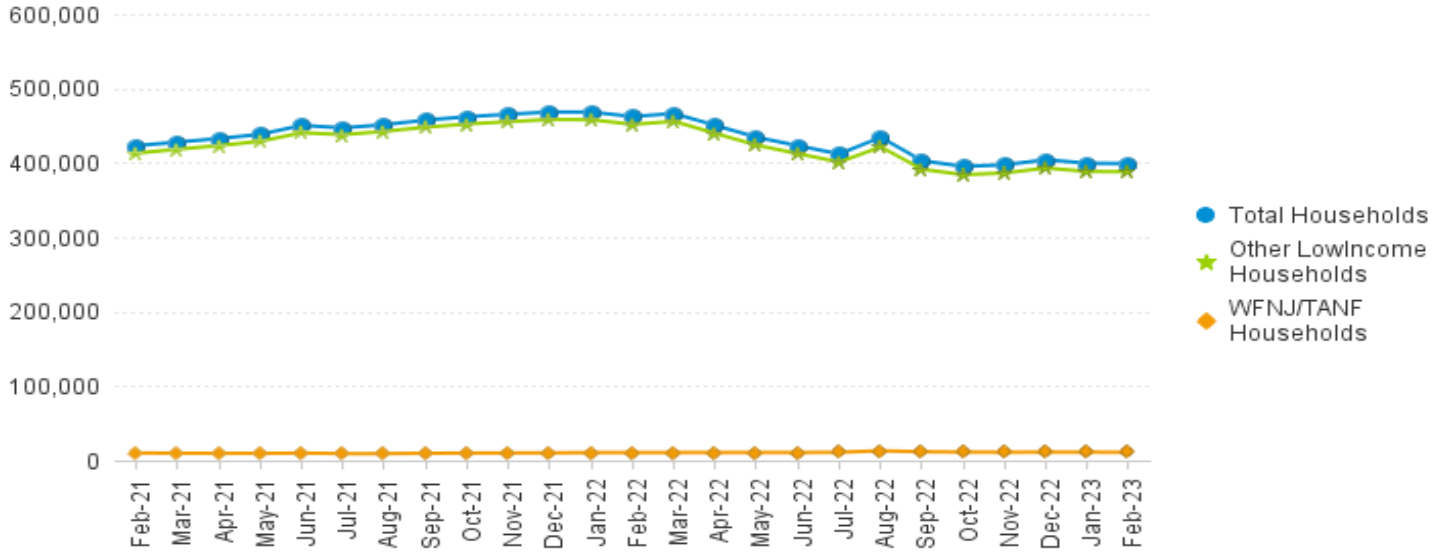
Effective July 2013 this data query source was converted to the SDW.

\* Age 60+ and People with a disability columns are independent subsets of total persons. An individual might appear in both columns

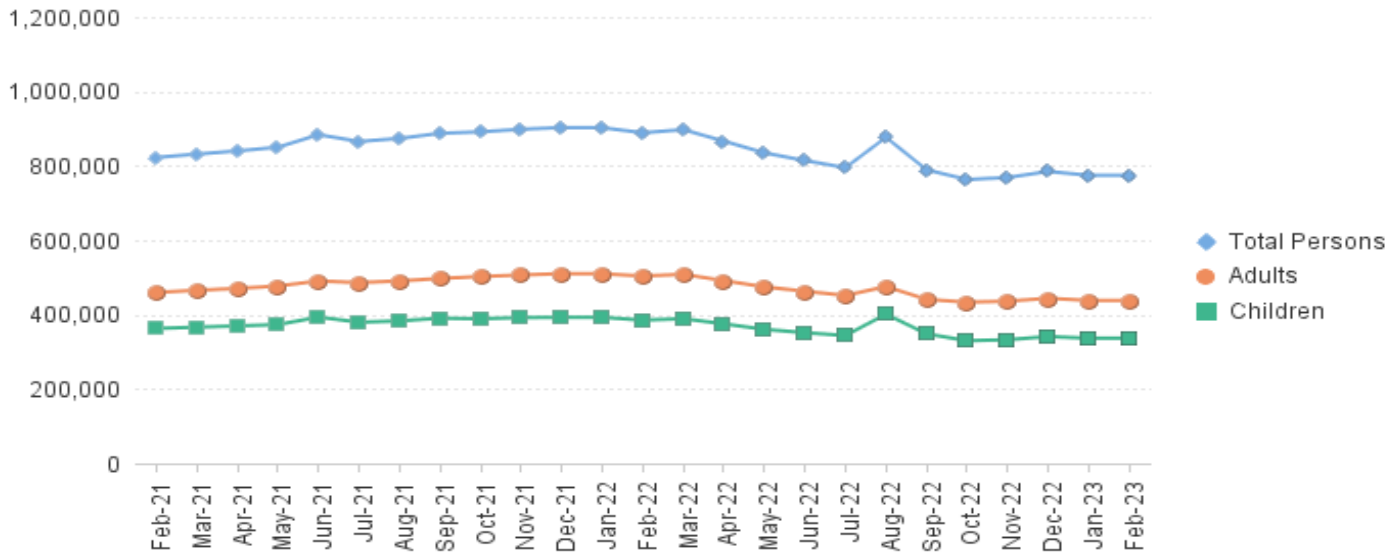
TABLE 6: NJ SNAP (FOOD STAMPS)

TRENDS FOR PARTICIPATING HOUSEHOLDS & PERSONS  
FEBRUARY 2021 THROUGH FEBRUARY 2023 (STATEWIDE)

Statewide NJ SNAP Households: FEBRUARY 2021 Through FEBRUARY 2023



Statewide NJ SNAP Persons: FEBRUARY 2021 Through FEBRUARY 2023



Data is derived from NJ MMIS Shared Data Warehouse Issuance files.  
Effective July 2013 this data query source was converted to the SDW

TABLE 7: NJ SNAP

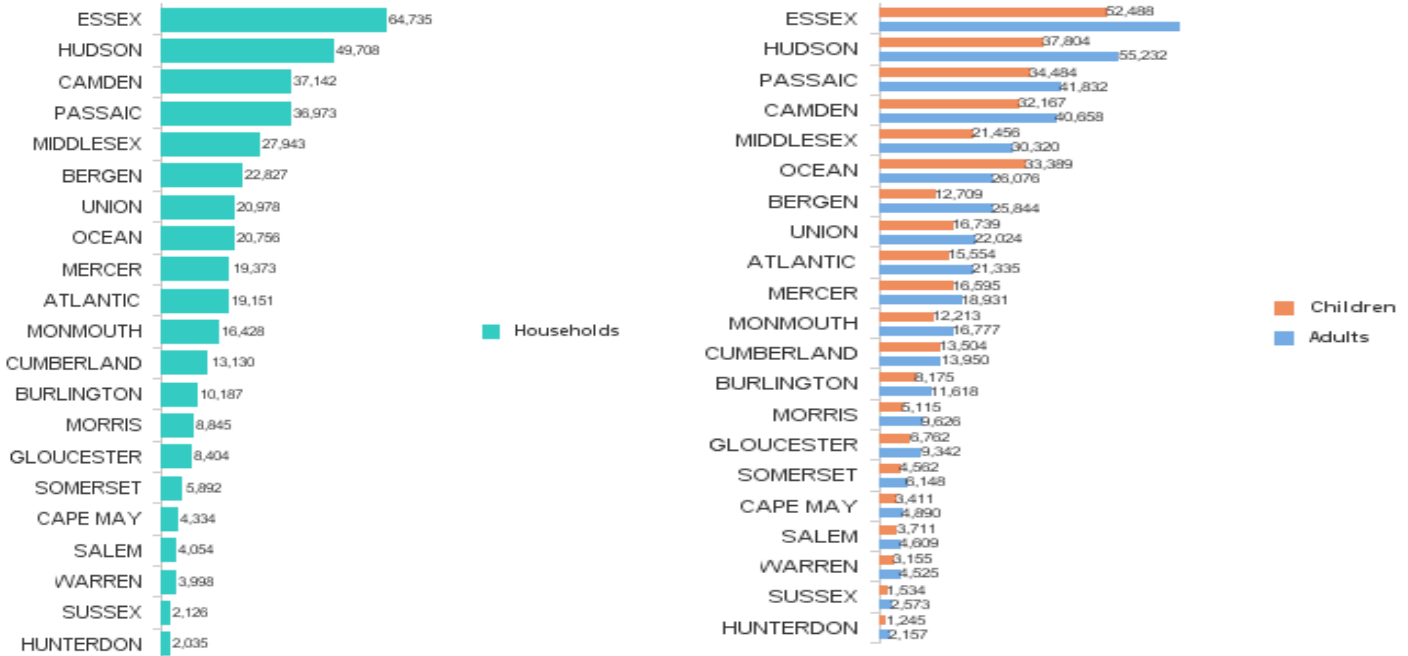
NUMBER OF PARTICIPATING HOUSEHOLDS, PERSONS, ADULTS AND CHILDREN BY COUNTY FOR FEBRUARY 2023

County	HOUSEHOLDS				PERSONS				Age 60+	People with a disability
	WFNJ/TANF	Other low income	TOTAL	% Chng (1 Yr)	Adults	Children	TOTAL	% Chng (1 Yr)		
ATLANTIC	593	18,558	19,151	-18.5%	21,335	15,554	36,889	-17.4%	6,775	10,540
BERGEN	408	22,419	22,827	-0.2%	25,844	12,709	38,553	1.2%	14,173	16,231
BURLINGTON	421	9,766	10,187	-12.7%	11,618	8,175	19,793	-11.9%	3,628	6,439
CAMDEN	1,355	35,787	37,142	-10.0%	40,658	32,167	72,825	-9.0%	10,868	19,660
CAPE MAY	102	4,232	4,334	0.0%	4,890	3,411	8,301	2.7%	1,378	2,356
CUMBERLAND	317	12,813	13,130	-0.9%	13,950	13,504	27,454	1.1%	3,643	7,146
ESSEX	1,647	63,088	64,735	-20.1%	69,365	52,488	121,853	-20.0%	20,496	31,340
GLOUCESTER	244	8,160	8,404	-7.8%	9,342	6,762	16,104	-6.4%	3,045	5,956
HUDSON	1,591	48,117	49,708	-25.6% *	55,232	37,804	93,036	-23.7% *	21,732	27,802
HUNTERDON	55	1,980	2,035	4.4% Δ	2,157	1,245	3,402	5.0%	789	1,173
MERCER	770	18,603	19,373	4.9% Δ	18,931	16,595	35,526	6.3% Δ	5,777	10,665
MIDDLESEX	582	27,361	27,943	-8.9%	30,320	21,456	51,776	-9.6%	13,829	17,503
MONMOUTH	245	16,183	16,428	-3.8%	16,777	12,213	28,990	-3.6%	6,903	9,924
MORRIS	116	8,729	8,845	1.5%	9,626	5,115	14,741	1.7%	4,899	5,551
OCEAN	344	20,412	20,756	4.4% Δ	26,076	33,389	59,465	5.3% Δ	6,925	10,854
PASSAIC	950	36,023	36,973	-22.4% *	41,832	34,484	76,316	-22.3% *	15,038	19,004
SALEM	162	3,892	4,054	2.4%	4,609	3,711	8,320	2.5%	1,193	2,341
SOMERSET	201	5,691	5,892	-4.0%	6,148	4,562	10,710	-3.4%	2,567	3,524
SUSSEX	46	2,080	2,126	1.4%	2,573	1,534	4,107	4.7%	906	1,547
UNION	567	20,411	20,978	-25.3% *	22,024	16,739	38,763	-27.3% *	8,420	11,477
WARREN	90	3,908	3,998	6.3% Δ	4,525	3,155	7,680	7.2% Δ	1,390	2,506
<b>NJ TOTAL</b>	<b>10,806</b>	<b>388,213</b>	<b>399,019</b>	<b>-13.7%</b>	<b>437,832</b>	<b>336,772</b>	<b>774,604</b>	<b>-12.9%</b>	<b>154,374</b>	<b>223,539</b>

Δ=higher caseload % change

\*=lower caseload % change

Total NJ SNAP Recipients FEBRUARY 2023 by County



Data is derived from NJ MMIS Shared Data Warehouse.

Effective July 2013 this data query source was converted to the SDW.

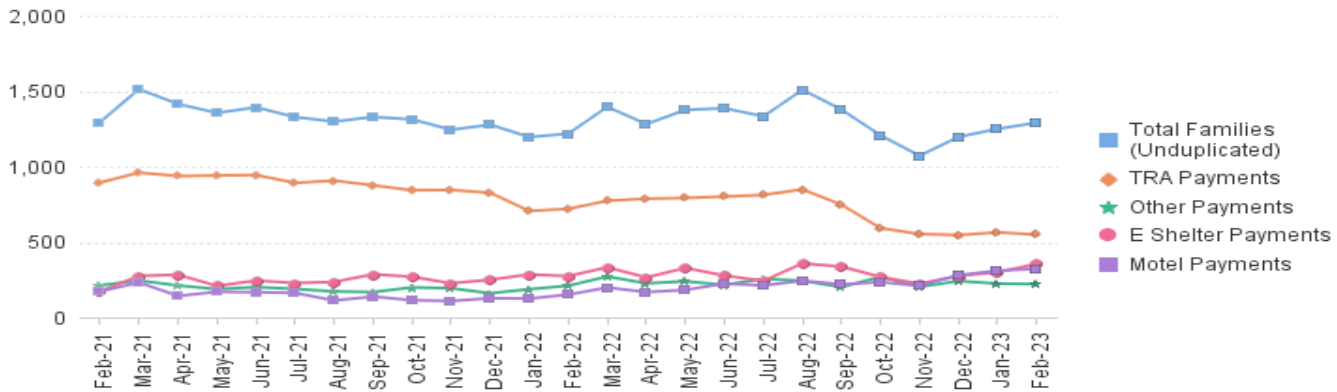
\* Age 60+ and People with a disability columns are independent subsets of total persons. An individual might appear in both columns

TABLE 8: EMERGENCY ASSISTANCE (STATEWIDE)

TOTAL NUMBER OF ELIGIBLE FAMILIES RECEIVING EMERGENCY ASSISTANCE PAYMENTS  
FEBRUARY 2021 THROUGH FEBRUARY 2023 - STATEWIDE

	Total WFNJ/EA Families (Undupl)	% CHNG (1 YR)	Temp Rent Asst. Payments (Undupl)	% CHNG (1 YR)	Motel Housing Payments (Undupl)	% CHNG (1 YR)	Shelter/Transitional Housing Payments (Undupl)	% CHNG (1 YR)	Other WFNJ/EA Payments (Undupl)	% CHNG (1 YR)
<b>2021</b>										
FEB	1,294	-19.1%	894	-4.1%	172	-5.0%	174	-52.3%	213	-47.9%
MAR	1,513	-12.2%	960	-2.0%	232	19.0%	275	-32.3%	244	-47.2%
APR	1,415	-2.7%	937	-2.4%	142	-7.2%	283	-15.3%	212	47.2%
MAY	1,356	-6.1%	941	5.7%	170	-28.6%	209	-22.6%	187	14.7%
JUN	1,393	-14.6%	944	-6.9%	167	-37.0%	244	-20.0%	201	-14.1%
JUL	1,328	-14.7%	892	-12.0%	162	-35.5%	228	-10.2%	189	-19.2%
AUG	1,299	-20.0%	907	-9.8%	112	-59.9%	235	-22.4%	172	-27.7%
SEP	1,329	-18.2%	876	-13.9%	138	-46.5%	286	-2.7%	168	-28.2%
OCT	1,313	-15.7%	843	-15.4%	114	-43.3%	269	-7.9%	199	-19.4%
NOV	1,244	-7.4%	845	-10.9%	109	-35.9%	226	25.6%	193	-5.4%
DEC	1,278	-8.4%	826	-12.0%	127	-35.2%	250	21.4%	160	-20.4%
<b>2021 Average</b>	<b>1,343</b>		<b>897</b>		<b>153</b>		<b>243</b>		<b>196</b>	
<b>2022</b>										
JAN	1,196	-12.0%	706	-21.4%	125	-34.2%	285	17.8%	187	-11.0%
FEB	1,218	-5.9%	720	-19.5%	151	-12.2%	274	57.5%	210	-1.4%
MAR	1,396	-7.7%	773	-19.5%	198	-14.7%	332	20.7%	271	11.1%
APR	1,282	-9.4%	787	-16.0%	168	18.3%	265	-6.4%	226	6.6%
MAY	1,376	1.5%	792	-15.8%	182	7.1%	328	56.9%	239	27.8%
JUN	1,387	-0.4%	801	-15.1%	224	34.1%	277	13.5%	216	7.5%
JUL	1,333	0.4%	812	-9.0%	212	30.9%	242	6.1%	255	34.9%
AUG	1,509	16.2%	849	-6.4%	243	117.0%	358	52.3%	243	41.3%
SEP	1,378	3.7%	747	-14.7%	219	58.7%	337	17.8%	201	19.6%
OCT	1,207	-8.1%	592	-29.8%	234	105.3%	268	-0.4%	269	35.2%
NOV	1,072	-13.8%	553	-34.6%	210	92.7%	223	-1.3%	203	5.2%
DEC	1,197	-6.3%	546	-33.9%	280	120.5%	276	10.4%	241	50.6%
<b>2022 Average</b>	<b>1,296</b>		<b>723</b>		<b>204</b>		<b>289</b>		<b>230</b>	
<b>2023</b>										
JAN	1,250	4.5%	564	-20.1%	310	148.0%	299	4.9%	224	19.8%
FEB	1,291	6.0%	549	-23.8%	322	113.2%	355	29.6%	221	5.2%
<b>2023 Average To Date</b>	<b>1,271</b>		<b>557</b>		<b>316</b>		<b>327</b>		<b>223</b>	

NJ STATEWIDE  
Families Receiving Emergency Assistance  
FEBRUARY 2021 THROUGH FEBRUARY 2023



WFNJ/EA data is derived from NJ MMIS Shared Data Warehouse.  
Effective July 2013 this data query source was converted to the SDW.

\* Effective Feb '11 Transitional Housing Payments were removed from 'Other EA Payments' and added to 'Shelter Payments'.

**TABLE 9 : EMERGENCY ASSISTANCE (BY COUNTY) TOTAL NUMBER OF ELIGIBLE FAMILIES RECEIVING EMERGENCY ASSISTANCE PAYMENTS BY COUNTY (UNDUPLICATED CASES) FOR FEBRUARY 2023**

County	TOTAL	%	Temp Rent Asst. Payments (Undupl)	Motel Housing Payments (Undupl)	Shelter/Transitional Housing Payments (Undupl)	Other WFNJ/EA Payments (Undupl)	SSI Receipts Receiving EA **
	WFNJ/EA Families (Undupl)	CHNG From FEB 22					
ATLANTIC	24	-40.0%	15		3	0	9
BERGEN	32	-11.1%	22		2	3	10
BURLINGTON	111	226.5% Δ	5		56	52	2
CAMDEN	46	7.0%	6		13	27	8
CAPE MAY	20	66.7% Δ	9		11	0	2
CUMBERLAND	2	0%	0		0	2	0
ESSEX	117	-10.7%	25		0	90	7
GLOUCESTER	21	250.0% Δ	1		0	12	9
HUDSON	220	22.9%	169		19	25	37
HUNTERDON	4	-50.0% *	2		0	0	2
MERCER	141	45.4%	70		39	23	38
MIDDLESEX	92	-6.1%	34		41	7	26
MONMOUTH	29	11.5%	1		2	26	3
MORRIS	21	61.5%	6		14	1	0
OCEAN	59	-26.3%	31		26	0	13
PASSAIC	139	-40.6%	85		7	34	27
SALEM	1	-75.0% *	0		0	1	0
SOMERSET	61	0%	34		12	11	19
SUSSEX	2	-33.3%	0		2	0	0
UNION	145	45.0%	34		73	39	9
WARREN	4	-69.2% *	0		2	2	0
<b>NJ Total</b>	<b>1,291</b>	<b>6.0%</b>	<b>549</b>	<b>322</b>	<b>355</b>	<b>221</b>	<b>511</b>

Δ=higher caseload % change

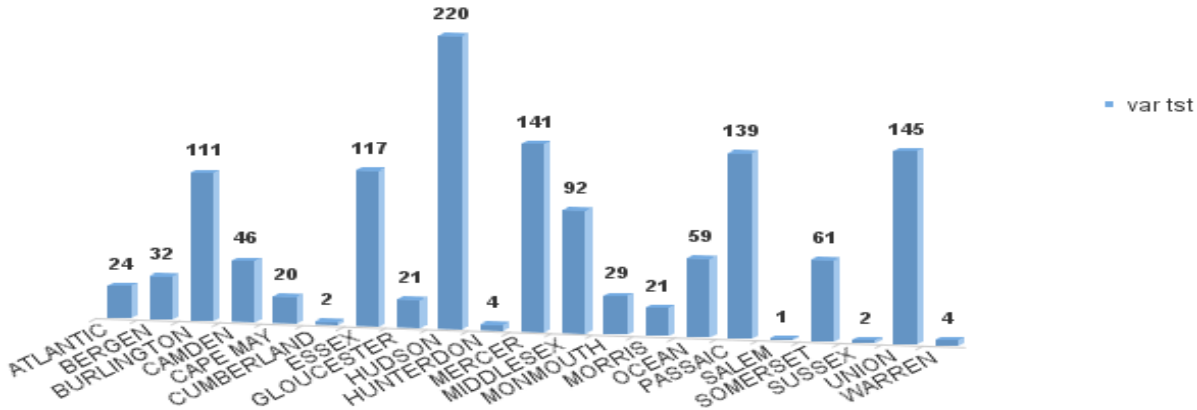
\*=lower caseload % change

\*\* SSI-EA includes pay codes 22 and 24, data is derived from NJ Division of Family Development FAMIS Report #FM430-03A

WFNJ/EA data is derived from NJ MMIS Shared Data Warehouse.

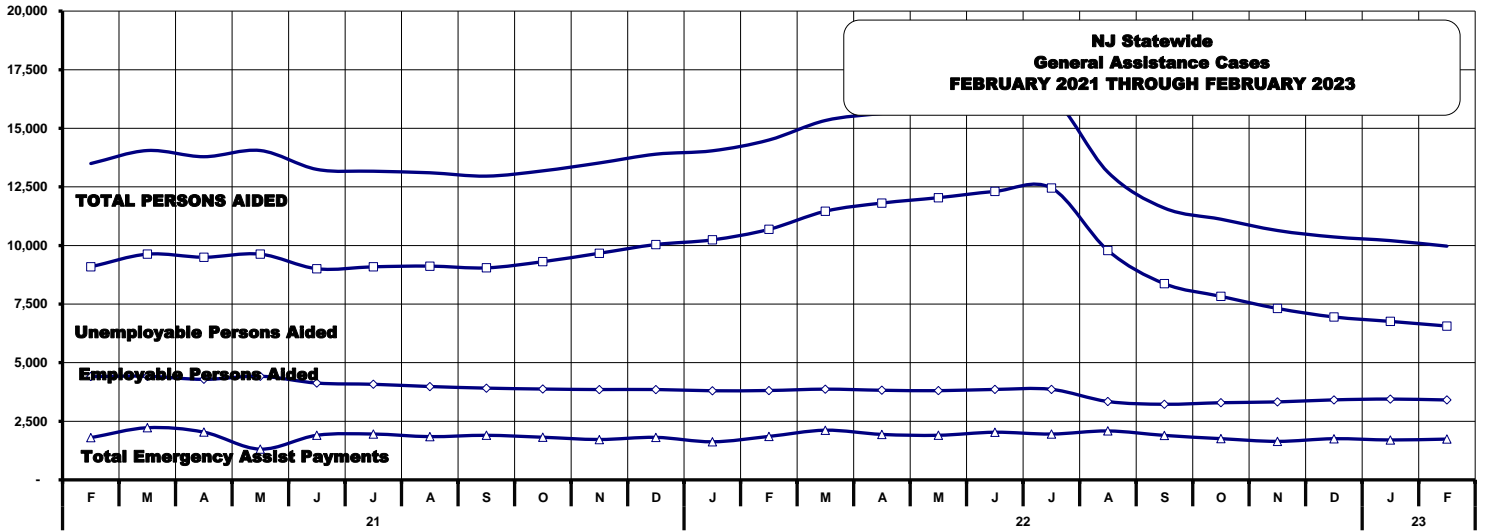
Effective July 2013 this data query source was converted to the SDW.

**Number WFNJ Families Receiving EA by County FEBRUARY 2023**



**TABLE 10: GENERAL ASSISTANCE PROGRAM**  
**NUMBER OF EMPLOYABLE AND UNEMPLOYABLE RECIPIENTS AND EMERGENCY ASSISTANCE PAYMENTS - STATEWIDE**  
**FEBRUARY 2021 THROUGH FEBRUARY 2023**

PROGRAM	Total Cases						Emergency Assistance Cases			
	Employable	% Chng (1 Yr)	Unemployable	% Chng (1 Yr)	Total	% Chng (1 Yr)	Temporary Rental Assistance	Other GA-EA	Total	% Chng (1 Yr)
<b>2021</b>										
FEB	9,089	116.1%	4,407	-25.7%	13,496	33.2%	809	991	1,800	-10.3%
MAR	9,630	97.8%	4,421	-26.2%	14,051	29.4%	819	1,405	2,224	11.4%
APR	9,499	70.0%	4,288	-26.9%	13,787	20.4%	832	1,204	2,036	15.2%
MAY	9,630	38.8%	4,421	-23.6%	14,051	10.5%	819	491	1,310	-28.7%
JUN	9,007	18.7%	4,130	-32.8%	13,247	0.1%	794	1,108	1,902	-12.4%
JUL	9,090	13.7%	4,078	-26.1%	13,168	-2.6%	833	1,121	1,954	-9.6%
AUG	9,120	12.3%	3,982	-24.3%	13,102	-2.1%	753	1,091	1,844	-10.6%
SEP	9,045	10.6%	3,914	-23.7%	12,959	-2.6%	787	1,114	1,901	-12.9%
OCT	9,309	14.1%	3,875	-22.3%	13,184	0.3%	757	1,061	1,818	-7.3%
NOV	9,668	17.5%	3,853	-20.1%	13,521	3.6%	711	1,011	1,722	0.2%
DEC	10,040	17.6%	3,855	-17.8%	13,895	5.0%	742	1,071	1,813	-6.7%
<b>2021 AVERAGE</b>	<b>9,342</b>		<b>4,148</b>		<b>13,499</b>		<b>792</b>	<b>1,076</b>	<b>1,868</b>	
<b>2022</b>										
JAN	10,239	14.0%	3,801	-16.5%	14,040	3.8%	677	947	1,624	-22.2%
FEB	10,687	17.6%	3,812	-13.5%	14,499	7.4%	727	1,126	1,853	2.9%
MAR	11,462	19.0%	3,870	-12.5%	15,332	9.1%	719	1,399	2,118	-4.8%
APR	11,810	24.3%	3,823	-10.8%	15,633	13.4%	742	1,196	1,938	-4.8%
MAY	12,039	25.0%	3,805	-13.9%	15,844	12.8%	750	1,152	1,902	45.2%
JUN	12,306	36.6%	3,858	-6.6%	16,164	22.0%	782	1,250	2,032	6.8%
JUL	12,451	37.0%	3,862	-5.3%	16,313	23.9%	758	1,196	1,954	0.0%
AUG	9,785	7.3%	3,342	-16.1%	13,127	0.2%	691	1,396	2,087	13.2%
SEP	8,370	-7.5%	3,225	-17.6%	11,595	-10.5%	635	1,261	1,896	-0.3%
OCT	7,829	-15.9%	3,291	-15.1%	11,120	-15.7%	574	1,184	1,758	-3.3%
NOV	7,313	-24.4%	3,326	-13.7%	10,639	-21.3%	602	1,040	1,642	-4.6%
DEC	6,950	-30.8%	3,413	-11.5%	10,363	-25.4%	599	1,157	1,756	-3.1%
<b>2022 AVERAGE</b>	<b>10,103</b>		<b>3,619</b>		<b>13,722</b>		<b>688</b>	<b>1,192</b>	<b>1,880</b>	
<b>2023</b>										
JAN	6,760	-34.0%	3,447	-9.3%	10,207	-27.3%	590	1,112	1,702	4.8%
FEB	6,563	-38.6%	3,408	-10.6%	9,971	-31.2%	570	1,170	1,740	-6.1%
<b>2023 AVERAGE TO DATE</b>	<b>6,662</b>		<b>3,428</b>		<b>10,089</b>		<b>580</b>	<b>1,141</b>	<b>1,721</b>	



**TABLE 11: EMPLOYABLE AND UNEMPLOYABLE CASES AND EMERGENCY ASSISTANCE CASES RECEIVING PAYMENTS BY COUNTY FEBRUARY 2023**

PROGRAM	Total Cases						Emergency Assistance Cases				
	Employable	% Chng (1 Yr)	Unemployable	% Chng (1 Yr)	Total	% Chng (1 Yr)	Temporary Rental Assistance	Other GA-EA	Total	% Chng (1 Yr)	
ATLANTIC	744	-31.6%	141	-24.2%	885	-30.5%	71	47	118	15.7%	
BERGEN	241	-32.9%	260	54.8%	501	-4.9%	70	21	91	4.6%	
BURLINGTON	269	-35.2%	134	-33.7%	403	-34.7%	5	101	106	1.9%	
CAMDEN	1,067	-36.9%	393	-18.1%	1,460	-32.7%	29	60	89	-32.6%	
CAPE MAY	109	-16.2%	37	-9.8%	146	-14.6%	9	36	45	-6.3%	
CUMBERLAND	222	-27.2%	145	64.8%	367	-6.6%	0	17	17	750.0% Δ	
ESSEX	583	-44.9%	197	-34.8%	780	-42.7%	*	12	167	179	-21.5%
GLOUCESTER	151	-5.0%	116	17.2%	267	3.5%	Δ	1	2	3	50.0% Δ
HUDSON	780	-57.3%	266	-44.2%	1,046	-54.6%	*	92	46	138	-18.3%
HUNTERDON	86	-34.4%	62	40.9%	148	-15.4%	7	21	28	-31.7%	
MERCER	335	-18.5%	223	-11.9%	558	-16.0%	38	17	55	-28.6%	
MIDDLESEX	236	-53.9%	307	-9.4%	543	-36.2%	59	103	162	-6.4%	
MONMOUTH	157	-41.2%	200	26.6%	357	-16.0%	1	81	82	26.2%	
MORRIS	158	-12.7%	149	-4.5%	307	-8.9%	41	35	76	18.8%	
OCEAN	247	-35.5%	215	3.4%	462	-21.8%	32	63	95	-9.5%	
PASSAIC	237	-60.2%	153	-49.5%	390	-56.6%	*	26	12	38	-41.5% *
SALEM	65	-58.9%	52	67.7%	117	-38.1%	0	2	2	-71.4% *	
SOMERSET	171	-1.2%	63	23.5%	234	4.5%	Δ	29	42	71	-15.5%
SUSSEX	35	-41.7%	26	23.8%	61	-24.7%	0	2	2	-87.5% *	
UNION	600	-9.8%	196	41.0%	796	-1.0%	Δ	37	277	314	31.9% Δ
WARREN	70	-40.2%	73	10.6%	143	-21.9%	11	18	29	-34.1%	
<b>NJ TOTAL</b>	<b>6,563</b>	<b>-38.6%</b>	<b>3,408</b>	<b>-10.6%</b>	<b>9,971</b>	<b>-31.2%</b>		<b>570</b>	<b>1,170</b>	<b>1,740</b>	<b>-6.1%</b>

Δ = ↑ Caseload %

\* = ↓ Caseload %



**TABLE 12:  
OFFICE OF  
CHILD SUPPORT  
SERVICES**

**OFFICE OF CHILD SUPPORT SERVICES  
QUARTERLY PERFORMANCE REPORT  
STATE SUMMARY  
TITLE IV-D SOURCE COLLECTION REPORT  
Comparison of Quarter-1 (FFY 2022 vs. FFY 2023)**

COLLECTION SOURCE	TOTAL 10/1/2021 - 12/31/2021	% OF TOTAL COLLECTIONS	TOTAL 10/1/2022 - 12/31/2022	% OF TOTAL COLLECTIONS	DOLLAR CHANGE	% CHANGE
FEDERAL TAX	\$2,869,915	1.06%	\$2,961,234	1.15%	\$ 91,319	3.18%
STATE TAX	\$452,264	0.17%	\$426,243	0.17%	\$ (26,021)	-5.75%
UIB	\$10,371,973	3.83%	\$4,946,061	1.92%	\$ (5,425,912)	-52.31%
INC WITHHOLD	\$185,522,295	68.59%	\$183,380,696	71.32%	\$ (2,141,599)	-1.15%
FROM OTHER STATES	\$10,175,306	3.76%	\$10,082,545	3.92%	\$ (92,761)	-0.91%
ADMIN ENFORCEMENT	\$5,398,428	2.00%	\$4,104,769	0.02%	\$ (1,293,659)	-23.96%
OTHER	\$55,701,991	20.59%	\$51,204,946	19.92%	\$ (4,497,045)	-8.07%
<b>TOTAL COLLECTIONS*</b>	<b>\$270,492,172</b>	<b>100%</b>	<b>\$257,106,494</b>	<b>98%</b>	<b>\$ (13,385,678)</b>	<b>-4.95%</b>
<b>DISBURSED COLLECTIONS**</b>	<b>\$235,854,384</b>		<b>\$223,277,704</b>		<b>\$ (12,576,680)</b>	<b>-5.33%</b>

\* Includes collections on both current support and arrears.

\*\* Includes collections on both current support and arrears; also includes money sent to other states.

SOURCE: NJKiDS (Based on Federal Quarterly Report of Collections - OCSE-34A except Disbursed Collections)

Disbursed Collections obtained from Federal Data Report - OCSE-157, which is reported annually to Congress and used in the calculation of incentive dollars earned by each state.

**TABLE 13:  
OFFICE OF  
CHILD SUPPORT  
SERVICES**

**OFFICE OF CHILD SUPPORT SERVICES  
STATE SUMMARY  
TITLE IV-D PATERNITY ESTABLISHMENT REPORT**  
Comparison of February (FFY 2022 vs. FFY 2023)

County	FEBRUARY 2022			FEBRUARY 2023			Increase or Decrease (-) from FFY 2022 to FFY 2023
	Total Children Born Out of Wedlock*	Number of Paternities Established	Percent of Paternities Established	Total Children Born Out of Wedlock*	Number of Paternities Established	Percent of Paternities Established	
Atlantic	5,376	5,358	99.7%	4,935	4,920	99.7%	0.0%
Bergen	2,700	2,647	98.0%	2,512	2,464	98.1%	0.1%
Burlington	4,138	4,049	97.8%	3,749	3,680	98.2%	0.3%
Camden	13,642	13,342	97.8%	12,557	12,275	97.8%	0.0%
Cape May	1,045	1,033	98.9%	899	891	99.1%	0.3%
Cumberland	5,829	5,772	99.0%	5,443	5,391	99.0%	0.0%
Essex	20,820	19,868	95.4%	19,040	18,148	95.3%	-0.1%
Gloucester	3,679	3,652	99.3%	3,319	3,303	99.5%	0.3%
Hudson	8,297	8,005	96.5%	7,725	7,467	96.7%	0.2%
Hunterdon	197	194	98.5%	165	168	101.8%	3.3%
Mercer	5,734	5,573	97.2%	5,235	5,062	96.7%	-0.5%
Middlesex	5,467	5,300	96.9%	5,012	4,898	97.7%	0.8%
Monmouth	4,068	3,950	97.1%	3,646	3,560	97.6%	0.5%
Morris	1,033	1,018	98.5%	909	905	99.6%	1.0%
Ocean	4,151	4,052	97.6%	3,807	3,741	98.3%	0.7%
Passaic	8,473	8,236	97.2%	7,663	7,481	97.6%	0.4%
Salem	2,401	2,311	96.3%	2,325	2,243	96.5%	0.2%
Somerset	1,161	1,134	97.7%	1,028	1,001	97.4%	-0.3%
Sussex	421	417	99.0%	393	397	101.0%	2.0%
Union	9,045	8,637	95.5%	8,603	8,184	95.1%	-0.4%
Warren	665	664	99.8%	580	587	101.2%	1.4%
<b>NJ TOTALS</b>	<b>108,342</b>	<b>105,212</b>	<b>97.1%</b>	<b>99,545</b>	<b>96,766</b>	<b>97.2%</b>	<b>0.1%</b>

SOURCE: NJKIDS (Based on Federal Performance Measures - OCSE-157)

\* Information on Out of Wedlock Births obtained from NJ Bureau of Vital Statistics

**TABLE 14:  
OFFICE OF  
CHILD SUPPORT  
SERVICES**

**OFFICE OF CHILD SUPPORT SERVICES  
STATE SUMMARY  
TITLE IV-D REPORT OF CASES WITH ORDERS**

Comparison of February (FFY 2022 vs. FFY 2023)

County	FEBRUARY 2022			FEBRUARY 2023			Increase or Decrease (-) from FFY 2022 to FFY 2023
	Total Cases	Cases with Orders	% of Cases with Orders	Total Cases	Cases with Orders	% of Cases with Orders	
Atlantic	10,134	9,411	92.9%	9,660	8,938	92.5%	-0.3%
Bergen	10,340	10,073	97.4%	9,978	9,690	97.1%	-0.3%
Burlington	11,253	10,608	94.3%	10,964	10,092	92.0%	-2.2%
Camden	25,034	23,813	95.1%	24,083	22,576	93.7%	-1.4%
Cape May	2,614	2,471	94.5%	2,439	2,308	94.6%	0.1%
Cumberland	10,600	10,128	95.5%	10,246	9,668	94.4%	-1.2%
Essex	34,895	30,628	87.8%	33,542	29,090	86.7%	-1.0%
Gloucester	9,042	8,617	95.3%	8,601	8,212	95.5%	0.2%
Hudson	17,216	15,530	90.2%	16,835	15,049	89.4%	-0.8%
Hunterdon	1,232	1,161	94.2%	1,121	1,053	93.9%	-0.3%
Mercer	11,359	10,367	91.3%	11,140	9,911	89.0%	-2.3%
Middlesex	15,104	14,161	93.8%	14,738	13,605	92.3%	-1.4%
Monmouth	11,304	10,742	95.0%	10,597	9,969	94.1%	-1.0%
Morris	5,040	4,870	96.6%	4,718	4,580	97.1%	0.4%
Ocean	12,603	12,109	96.1%	12,021	11,515	95.8%	-0.3%
Passaic	16,569	14,615	88.2%	15,840	13,920	87.9%	-0.3%
Salem	3,634	3,471	95.5%	3,533	3,333	94.3%	-1.2%
Somerset	3,919	3,689	94.1%	3,779	3,437	90.9%	-3.2%
Sussex	2,253	2,212	98.2%	2,193	2,135	97.4%	-0.8%
Union	16,125	15,271	94.7%	15,566	14,671	94.3%	-0.5%
Warren	2,303	2,195	95.3%	2,171	2,053	94.6%	-0.7%
<b>NJ TOTALS</b>	<b>232,573</b>	<b>216,142</b>	<b>92.9%</b>	<b>223,765</b>	<b>205,805</b>	<b>92.0%</b>	<b>-1.0%</b>

SOURCE: NJKIDS (Based on Federal Performance Measures - OCSE-157)

**TABLE 15:  
OFFICE OF  
CHILD SUPPORT  
SERVICES**

**OFFICE OF CHILD SUPPORT SERVICES  
STATE SUMMARY  
TITLE IV-D COLLECTIONS ON CURRENT SUPPORT**  
Comparison of February (FFY 2022 vs. FFY 2023)

County	FEBRUARY 2022			FEBRUARY 2023			Increase or Decrease (-) from FFY 2022 to FFY 2023
	Total Current Support Due	Total Current Support Distributed	Total Collection Rate	Total Current Support Due	Total Current Support Distributed	Total Collection Rate	
Atlantic	\$3,151,518	\$1,949,029	61.8%	\$3,071,572	\$1,955,216	63.7%	1.8%
Bergen	\$6,968,960	\$5,184,539	74.4%	\$6,729,689	\$5,075,659	75.4%	1.0%
Burlington	\$4,644,129	\$3,147,617	67.8%	\$4,528,417	\$3,128,826	69.1%	1.3%
Camden	\$6,636,841	\$3,895,815	58.7%	\$6,413,428	\$3,826,909	59.7%	1.0%
Cape May	\$903,316	\$592,686	65.6%	\$842,508	\$567,343	67.3%	1.7%
Cumberland	\$2,553,501	\$1,455,687	57.0%	\$2,487,116	\$1,448,789	58.3%	1.2%
Essex	\$8,815,075	\$5,126,367	58.2%	\$8,659,288	\$5,112,481	59.0%	0.9%
Gloucester	\$3,466,410	\$2,275,913	65.7%	\$3,305,156	\$2,205,914	66.7%	1.1%
Hudson	\$6,073,953	\$3,988,265	65.7%	\$6,059,902	\$3,968,506	65.5%	-0.2%
Hunterdon	\$1,006,458	\$828,759	82.3%	\$904,508	\$752,219	83.2%	0.8%
Mercer	\$3,301,018	\$2,057,191	62.3%	\$3,298,483	\$2,101,760	63.7%	1.4%
Middlesex	\$6,205,112	\$4,229,886	68.2%	\$6,154,713	\$4,220,532	68.6%	0.4%
Monmouth	\$5,739,773	\$4,170,967	72.7%	\$5,400,361	\$3,986,534	73.8%	1.2%
Morris	\$3,700,983	\$2,762,785	74.7%	\$3,489,607	\$2,564,952	73.5%	-1.1%
Ocean	\$5,346,424	\$3,803,110	71.1%	\$5,197,051	\$3,724,335	71.7%	0.5%
Passaic	\$5,319,353	\$3,319,506	62.4%	\$5,126,154	\$3,256,387	63.5%	1.1%
Salem	\$912,937	\$540,179	59.2%	\$932,274	\$554,820	59.5%	0.3%
Somerset	\$2,402,015	\$1,937,573	80.7%	\$2,192,526	\$1,810,120	82.6%	1.9%
Sussex	\$1,471,699	\$1,095,750	74.5%	\$1,404,520	\$1,066,839	76.0%	1.5%
Union	\$5,817,310	\$3,908,268	67.2%	\$5,894,529	\$3,877,288	65.8%	-1.4%
Warren	\$1,108,149	\$828,055	74.7%	\$987,423	\$746,417	75.6%	0.9%
<b>NJ TOTALS</b>	<b>\$85,544,933</b>	<b>\$57,097,945</b>	<b>66.7%</b>	<b>\$83,079,225</b>	<b>\$55,951,844</b>	<b>67.3%</b>	<b>0.6%</b>

SOURCE: NJKIDS (Based on Federal Performance Measures - OCSE-157)

**TABLE 16:  
OFFICE OF  
CHILD SUPPORT  
SERVICES**

**OFFICE OF CHILD SUPPORT SERVICES  
STATE SUMMARY  
TITLE IV-D CASES ARREARS COLLECTION REPORT**

Comparison of February (FFY 2022 vs. FFY 2023)

County	FEBRUARY 2022			FEBRUARY 2023			Increase or Decrease (-) from FFY 2022 to FFY 2023
	Total Cases with Arrears	Total Amount Collected	Average Arrears Collection per Case	Total Cases with Arrears	Total Amount Collected	Average Arrears Collection per Case	
Atlantic	6,297	\$586,880	\$93.20	6,061	\$490,952	\$81.00	-\$12.20
Bergen	6,639	\$1,023,079	\$154.10	6,415	\$967,365	\$150.80	-\$3.30
Burlington	7,060	\$883,968	\$125.21	6,838	\$765,608	\$111.96	-\$13.24
Camden	14,363	\$1,256,174	\$87.46	13,810	\$1,269,160	\$91.90	\$4.44
Cape May	1,654	\$127,699	\$77.21	1,587	\$205,212	\$129.31	\$52.10
Cumberland	6,276	\$445,204	\$70.94	6,022	\$546,003	\$90.67	\$19.73
Essex	18,888	\$1,965,448	\$104.06	17,911	\$1,816,153	\$101.40	-\$2.66
Gloucester	5,710	\$650,685	\$113.96	5,452	\$533,781	\$97.91	-\$16.05
Hudson	10,501	\$954,426	\$90.89	10,405	\$1,032,859	\$99.27	\$8.38
Hunterdon	739	\$220,892	\$298.91	671	\$118,295	\$176.30	-\$122.61
Mercer	6,951	\$711,878	\$102.41	6,760	\$623,814	\$92.28	-\$10.13
Middlesex	9,296	\$1,083,907	\$116.60	9,134	\$1,190,728	\$130.36	\$13.76
Monmouth	6,963	\$841,236	\$120.82	6,504	\$955,723	\$146.94	\$26.13
Morris	3,321	\$521,707	\$157.09	3,100	\$473,909	\$152.87	-\$4.22
Ocean	7,563	\$762,730	\$100.85	7,285	\$776,126	\$106.54	\$5.69
Passaic	9,793	\$1,089,840	\$111.29	9,354	\$1,008,604	\$107.83	-\$3.46
Salem	2,125	\$165,621	\$77.94	2,077	\$144,330	\$69.49	-\$8.45
Somerset	2,412	\$330,668	\$137.09	2,292	\$358,371	\$156.36	\$19.26
Sussex	1,451	\$191,521	\$131.99	1,422	\$177,070	\$124.52	-\$7.47
Union	9,883	\$1,250,669	\$126.55	9,523	\$1,157,724	\$121.57	-\$4.98
Warren	1,470	\$272,081	\$185.09	1,359	\$152,024	\$111.86	-\$73.22
<b>NJ TOTALS</b>	<b>139,355</b>	<b>\$15,336,313</b>	<b>\$110.05</b>	<b>133,982</b>	<b>\$14,763,811</b>	<b>\$110.19</b>	<b>\$0.14</b>

SOURCE: OCSE-157 Child Support Enforcement Annual Data Report

**Table 17**  
**WFNJ****WORK FIRST NEW JERSEY STATISTICAL SUMMARY****FEBRUARY 2023**

COUNTY	EMPLOYMENT DIRECTED ACTIVITIES			EMPLOYED OPEN (WFNJ RECIPIENT)	SUPPORT SERVICES ON ACTIVE CASE		CLOSED FOR EMPLOYMENT THIS MONTH	POST ASSISTANCE CHILD CARE
	CWEP	ALL OTHER TRAINING	JOB SEARCH		CHILD CARE	TRAINING REL. EXPENSES		
<b>ATLANTIC</b>	4	48	8	29	24	55	4	20
<b>BERGEN</b>	30	5	48	13	39	7	8	3
<b>BURLINGTON</b>	77	13	51	27	32	15	2	9
<b>CAMDEN</b>	35	166	2	61	71	2	12	6
<b>CAPE MAY</b>	0	13	13	10	1	8	0	2
<b>CUMBERLAND</b>	0	19	31	9	14	48	3	3
<b>ESSEX</b>	111	166	4	78	60	107	9	46
<b>GLOUCESTER</b>	10	7	9	24	15	8	6	3
<b>HUDSON</b>	0	363	59	101	232	111	29	12
<b>HUNTERDON</b>	0	0	0	0	1	0	0	2
<b>MERCER</b>	62	150	37	47	110	57	12	55
<b>MIDDLESEX</b>	0	30	67	21	27	1	4	6
<b>MONMOUTH</b>	0	7	13	22	22	7	2	22
<b>MORRIS</b>	0	9	0	3	1	0	3	1
<b>OCEAN</b>	0	114	0	5	14	11	1	14
<b>PASSAIC</b>	5	107	0	16	32	7	8	7
<b>SALEM</b>	0	11	10	3	9	1	1	0
<b>SOMERSET</b>	16	2	12	10	15	26	4	1
<b>SUSSEX</b>	0	3	2	2	0	0	0	1
<b>UNION</b>	28	53	0	8	15	1	8	1
<b>WARREN</b>	0	5	1	3	1	0	2	3
<b>STATE TOTAL</b>	<b>378</b>	<b>1,291</b>	<b>367</b>	<b>492</b>	<b>735</b>	<b>472</b>	<b>118</b>	<b>217</b>

Data is derived from NJ Division of Family Development's FAMIS Reports RM064-01 &amp; RM703-51, AdHoc Reports 5549 &amp; 5598 and SDW Report WR00022WZ\_CC

**DIVISION OF FAMILY DEVELOPMENT CURRENT PROGRAM STATISTICS  
FEBRUARY 2023**

## **ACRONYMS**

**EMERGENCY ASSISTANCE (EA)** - Payments to those eligible for WFNJ/TANF or WFNJ/GA, authorized during the 30 consecutive days immediately following the emergency (defined as a substantial loss of shelter, food, clothing, or household furnishings by fire, flood or other similar disaster) or if eligible individual or family is in an imminent or actual state of homelessness.

**NJ SNAP** - Formerly the Food Stamp Program, now known as NJ SNAP (NJ Supplemental Nutrition Assistance Program) authorized by Congress as a nutritional supplement program to provide low income households with more food of greater variety and better nutrition. Program eligibility is based on household income, resources, and expenses for medical, shelter, and dependent care. CWA staff refers certain recipients to the New Jersey Department of Labor for participation in the Food Stamp Employment and Training Program.

**FAMIS:** Family Assistance Management Information System

**GAAS:** General Assistance Automated System

**NJKIDS:** New Jersey Kids Deserve Support (Child Support Information Management System)

**NJ MMIS SHARED DATA WAREHOUSE:** The Shared Data Warehouse (SDW) is the repository for New Jersey's DFD and Medicaid data. Since 2003, OptumInsight has administered the SDW and provided access to the data through a reporting tool known as Business Objects.

**OMEGA:** Online Management of Economic Goal Achievement

**SSI-EA:** Supplemental Security Income-Emergency Assistance

**WFNJ:** Work First New Jersey - Fully implemented July 1, 1997, this is New Jersey's welfare reform program which responds to the requirements of the Federal Personal Responsibility and Work Opportunity Reconciliation Act (**PRWORA**) of 1996. PRWORA established Temporary Assistance for Needy Families (**TANF**) as the replacement for AFDC cash assistance. WFNJ includes two segments, **WFNJ/TANF** for families with children, and **WFNJ/GA** (General Assistance) for single adults and couples without dependent children. WFNJ emphasizes achieving self-sufficiency and limits lifetime receipt of financial assistance to a total of five years.

**DIVISION OF FAMILY DEVELOPMENT CURRENT PROGRAM STATISTICS  
FEBRUARY 2023**

## **EXPLANATORY NOTES**

The Department of Human Services Division of Family Development provides basic income and an opportunity to achieve self-sufficiency for individuals and families served by the Division's programs. The Division provides leadership, direction and supervision to those public agencies responsible for administering those programs and plans for and develops policies to promote self-sufficiency.

### **WFNJ STATISTICAL SUMMARY (TABLE 17)**

**Employment Directed Activities (EDA)** - From Activities Summary Report (OMEGA report # RM064). Unduplicated count of persons participating in Community Work Experience Program (CWEP), All Other Training, or Job Search.

**Number of Persons Employed This Month, Still Receiving TANF** - Individuals with open "empl" activity on OMEGA. Ad hoc report.

**Participants Receiving Child Care Services** - From Issuance Disbursement Summary (OMEGA report # RM703). Total number of active participants who show receipt of Child Care.

**Number of Persons Closed on FAMIS Due to Employment** - From FAMIS report #5549-RM-2

**Post TANF and Receiving Child Care** - Persons no longer in receipt of TANF but still receiving child care. From Share Data Warehouse Child Care case count based on Child Care payments (SDW report WR00022WZ\_CC ).