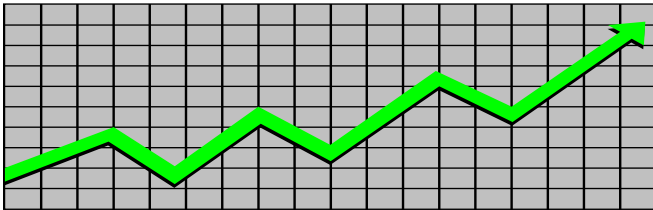


**State of New Jersey**  
**Department of Human Services**  
**Division of Family Development**

---

# **CURRENT PROGRAM STATISTICS**



---

**January 2023**  
**Natasha Johnson, Assistant Commissioner**

## **TABLE OF CONTENTS**

### **HIGHLIGHTS:**

<b>WFNJ/TANF</b> .....	<b>ii</b>
<b>NJ SNAP</b> .....	<b>ii</b>
<b>EMERGENCY ASSISTANCE</b> .....	<b>ii</b>
<b>GENERAL ASSISTANCE</b> .....	<b>iii</b>
GA Emergency Assistance.....	iii
GA Program.....	iii
<b>CHILD SUPPORT SERVICES</b> .....	<b>iii</b>
<b>WORK FIRST NEW JERSEY (WFNJ)</b> .....	<b>iii</b>
<b>STATISTICS- BY STATE &amp; COUNTY</b> .....	<b>1</b>
Table 1: WFNJ/TANF Families & Persons (NJ Statewide) January 2021 to 2023.....	1
Table 2: WFNJ/TANF Families (by County)- January 2023.....	2
Table 2B: WFNJ/TANF Persons, Adults, & Children (by County)- January 2023.....	3
Table 3: TANF Work Participation Rates Over 12 Month Period (by County)- January 2023.....	4
Table 4: TANF Work Participation Rates Over 12 Month Period (NJ Statewide)- January 2023.....	5
Table 5: NJ SNAP Households/Persons (NJ Statewide) January 2021 to 2023.....	6
Table 6: NJ SNAP Recipient Trends (NJ Statewide) January 2021 to 2023.....	7
Table 7: NJ SNAP Households/Persons (by County)- January 2023.....	8
Table 8: Emergency Assistance Program (NJ Statewide) January 2021 to 2023.....	9
Table 9: Emergency Assistance Program (by County)- January 2023.....	10
Table 10: General Assistance Program (NJ Statewide) January 2021 to 2023.....	11
Table 11: General Assistance Program (by County)- January 2023.....	12
Table 12: Child Support Services Distributions (NJ Statewide) FFY 2023.....	13
Table 13: Child Support Services Paternities Established- January 2023.....	14
Table 14: Child Support Services Cases With Orders- January 2023.....	15
Table 15: Child Support Services Collections On Current Support- January 2023.....	16
Table 16: Child Support Services Cases With Payments On Arrears- January 2023.....	17
Table 17: WFNJ Statistical Summary- January 2023.....	18
<b>ACRONYMS</b> .....	<b>19</b>
<b>EXPLANATORY NOTES</b> .....	<b>20</b>
WFNJ Statistical Summary (Table 17).....	20

## DIVISION OF FAMILY DEVELOPMENT CURRENT PROGRAM STATISTICS JANUARY 2023

---

Each month the Division of Family Development publishes its program statistics for: WFNJ/TANF, NJ SNAP, Emergency Assistance, General Assistance, and Child Support Services. When possible, information is provided separately for children and adults. Many tables also provide trend data with information broken down by county for readers to consider. This report is compiled and prepared by The Bureau of Research & Reporting.

---

### **WFNJ/TANF**

- As of the end of January, the TANF caseload had increased by 1,182 cases, from 9,838 in January 2022 to 11,020 in January 2023; an increase of 12%.
- The counties with caseloads that increased the most since January 2022 were Sussex (73.7%), Bergen (64.7%), and Union (33.3%).
- The counties with caseloads that decreased the most since January 2022 were Warren (-8.8%), Hunterdon (-7.7%), and Passaic (-4.2%).
- Of the WFNJ/TANF cases, 2,560 or 23.2% were child-only in January 2023.
- The counties with the most child-only cases were Camden (440), Hudson (302), and Passaic (263).
- Hudson (4,495), Camden (4,067), and Essex (3,964) counties had the greatest number of persons receiving TANF in January 2023.

### **NJ SNAP (Formerly FOOD STAMPS)**

- In January 2023, there were 399,432 households receiving NJ SNAP benefits. The number of NJ SNAP households decreased by 68,921 or -14.7%, since January 2022.
- There were 774,582 persons receiving NJ SNAP benefits as of January 2023; a decrease of 127,870 or -14.2% since January 2022.
- The counties having the highest SNAP caseload increase since January 2022 was Hunterdon (2%).
- The counties having the highest SNAP caseload decrease since January 2022 were Union (-26.1%), Hudson (-25.8%), and Passaic (-23.4%).

### **EMERGENCY ASSISTANCE**

- There were 1,250 TANF families receiving Emergency Assistance (EA) in January 2023; an increase of 54 or 4.5% since January 2022.
- In January 2023, EA payments were made for 625 SSI recipients.

## **DIVISION OF FAMILY DEVELOPMENT CURRENT PROGRAM STATISTICS JANUARY 2023**

- There were 1,702 GA cases with Emergency Assistance payments in January 2023; an increase of 78 or 4.8% since January 2022.
- The counties that showed the highest percent increase in Emergency Assistance payments were Bergen (111.1%), Union (109%), and Salem (100%).
- The counties that showed the highest percent decrease in Emergency Assistance payments were Sussex (-71.4%), Ocean (-44.9%), and Warren (-40.5%).

### **GENERAL ASSISTANCE**

- The total numbers of cases receiving GA has decreased from 14,040 to 10,207 since January 2022; a decrease of -27.3%.
- There were 6,760 Employable GA and 3,447 Unemployable GA cases in January 2023.
- The counties that showed a percent increase for GA cases were Somerset (9.9%), Hunterdon (6.5%), and Union (2.8%) since January 2022.
- The counties that showed the highest percent decrease for GA cases since January 2022 were Hudson (-52.8%), Passaic (-49.9%), and Middlesex (-37.4%).
- In January 2023, GA cases showed a -1.51% decrease since December 2022.

### **CHILD SUPPORT SERVICES (QUARTERLY REPORT)**

- The total collection for the Child Support Services Program was about \$257 million from October 2022 to December 2022; a decrease of -4.95% over the same period from FFY 2022.
- Total distributions decreased -5.4% from December 2021.

### **WORK FIRST NEW JERSEY (WFNJ)**

- During the report month of January 2023, there were 490 families in which at least one member was employed and an additional 152 families whose WFNJ assistance cases were closed due to employment - related earnings.
- The three counties with the greatest number of employed active WFNJ recipients were: Hudson (101), Essex (72), and Camden (62).
- There were 203 former TANF cases receiving post-TANF support in the form of child care assistance.

TABLE 1:

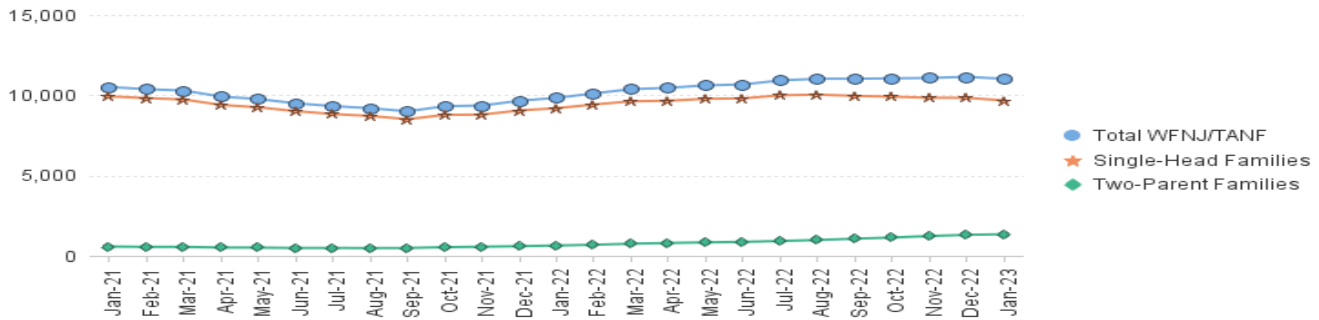
WFNJ/TANF  
PROGRAM

STATEWIDE NUMBER OF APPLICATIONS AND TERMINATIONS DURING JANUARY 2023  
NUMBER OF ELIGIBLE FAMILIES & PERSONS RECEIVING WFNJ/TANF FOR JANUARY 2023

JANUARY 2021 THROUGH JANUARY 2023

		Cases Added	Cases Closed	Child-Only Cases ‡	Total Single-Head Families	2-Parent Families	Total WFNJ/TANF Families	%CHNG (1 Yr.)	Total Persons	%CHNG (1 Yr.)	Adults	Children
2021	JAN	400	585	3,379	9,932	580	10,512	-1.7%	26,960	-0.6%	7,713	19,247
	FEB	378	504	3,347	9,818	559	10,377	-4.1%	26,520	-3.6%	7,589	18,931
	MAR	397	481	3,311	9,735	557	10,292	-3.9%	26,335	-3.2%	7,538	18,797
	APR	298	704	3,224	9,395	518	9,913	-11.8%	25,276	-12.1%	7,207	18,069
	MAY	264	510	3,209	9,250	513	9,763	-18.0%	24,858	-19.1%	7,067	17,791
	JUN	373	636	3,141	9,008	489	9,497	-21.8%	24,146	-23.0%	6,845	17,301
	JUL	391	590	3,068	8,829	493	9,322	-23.0%	23,785	-23.8%	6,747	17,038
	AUG	415	544	3,029	8,709	482	9,191	-22.4%	23,445	-23.0%	6,644	16,801
	SEP	388	588	2,945	8,507	489	8,996	-22.0%	23,009	-22.1%	6,540	16,469
	OCT	833	564	2,921	8,779	538	9,317	-16.7%	23,888	-16.6%	6,934	16,954
	NOV	656	614	2,816	8,791	568	9,359	-13.6%	24,282	-12.5%	7,111	17,171
	DEC	702	432	2,824	9,054	601	9,655	-9.6%	25,177	-8.0%	7,432	17,745
2021	<b>Average</b>	<b>458</b>	<b>563</b>	<b>3,101</b>	<b>9,151</b>	<b>532</b>	<b>9,683</b>		<b>24,807</b>		<b>7,114</b>	<b>17,693</b>
2022	JAN	667	484	2,796	9,193	645	9,838	-6.4%	25,789	-4.3%	7,687	18,102
	FEB	655	414	2,794	9,424	689	10,113	-2.5%	26,638	0.4%	8,008	18,630
	MAR	715	512	2,804	9,623	756	10,379	0.8%	27,433	4.2%	8,331	19,102
	APR	644	622	2,743	9,656	802	10,458	5.5%	27,749	9.8%	8,517	19,232
	MAY	632	475	2,723	9,777	838	10,615	8.7%	28,183	13.4%	8,730	19,453
	JUN	622	599	2,718	9,802	869	10,671	12.4%	28,287	17.1%	8,822	19,465
	JUL	679	518	2,715	9,998	925	10,923	17.2%	29,043	22.1%	9,133	19,910
	AUG	713	609	2,687	10,037	987	11,024	19.9%	29,453	25.6%	9,324	20,129
	SEP	755	808	2,651	9,959	1,070	11,029	22.6%	29,486	28.1%	9,448	20,038
	OCT	753	821	2,626	9,910	1,139	11,049	18.6%	29,606	23.9%	9,562	20,044
	NOV	801	822	2,573	9,843	1,234	11,077	18.4%	29,858	23.0%	9,738	20,120
	DEC	747	792	2,578	9,837	1,308	11,145	15.4%	30,064	19.4%	9,875	20,189
2022	<b>Average</b>	<b>699</b>	<b>623</b>	<b>2,701</b>	<b>9,755</b>	<b>939</b>	<b>10,693</b>		<b>28,466</b>		<b>8,931</b>	<b>19,535</b>
2023	JAN	669	792	2,560	9,674	1,346	11,020	12.0%	29,683	15.1%	9,806	19,877
2023	<b>Average to date</b>	<b>669</b>	<b>792</b>	<b>2,560</b>	<b>9,674</b>	<b>1,346</b>	<b>11,020</b>		<b>29,683</b>		<b>9,806</b>	<b>19,877</b>

NJ STATEWIDE  
Eligible Families Receiving WFNJ/TANF  
JANUARY 2021 THROUGH JANUARY 2023



Data is derived from NJ MMIS Shared Data Warehouse Issuance files.  
Effective July 2013 this data query source was converted to the SDW

‡ Child-only cases are defined as families in which no eligible adult receives TANF program benefits, yet the family continues to be headed by at least one of the biological parents, or grandparents, or other appropriate adult.

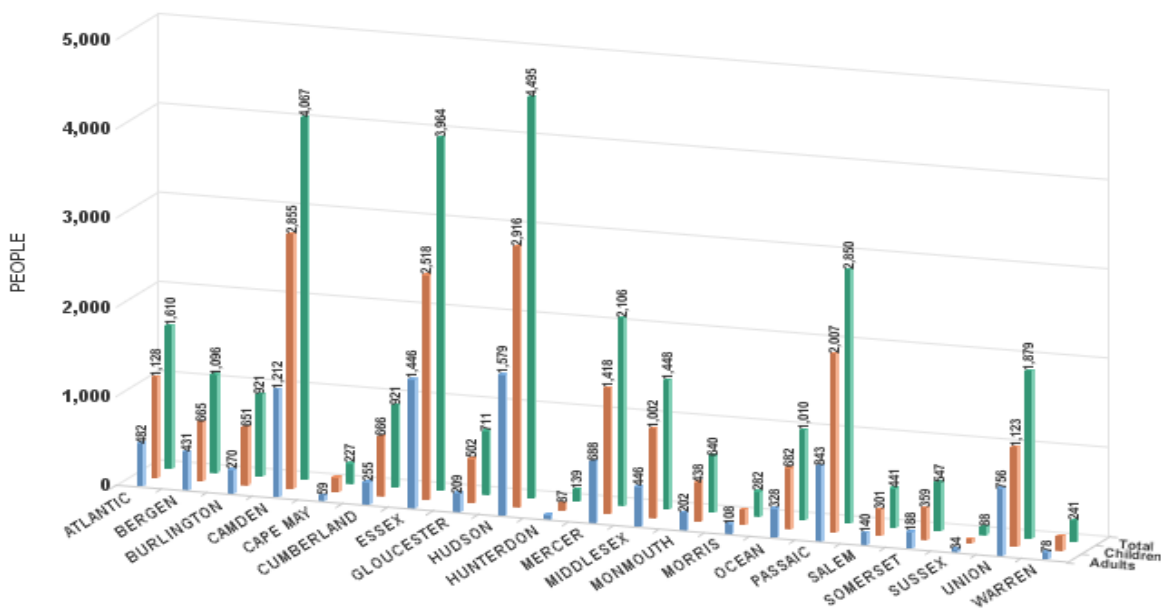


**TABLE 2B :**  
**WFNJ/TANF**  
**PROGRAM**                      **NUMBER OF PARTICIPATING PERSONS, ADULTS, AND CHILDREN**  
**BY COUNTY FOR JANUARY 2023**

County	Adults	Children	PERSONS		% Chng (1 Yr)	Persons Per Case
			Child/Adult Ratio	Total Persons		
ATLANTIC	482	1,128	2.34	1,610	-1.2%	2.57
BERGEN	431	665	1.54	1,096	76.2% Δ	2.64
BURLINGTON	270	651	2.41	921	12.2%	2.68
CAMDEN	1,212	2,855	2.36	4,067	13.2%	2.66
CAPE MAY	59	168	2.85	227	14.6%	2.80
CUMBERLAND	255	666	2.61	921	11.8%	2.86
ESSEX	1,446	2,518	1.74	3,964	25.7%	2.77
GLOUCESTER	209	502	2.40	711	10.6%	2.72
HUDSON	1,579	2,916	1.85	4,495	11.9%	2.69
HUNTERDON	52	87	1.67	139	-5.4% *	2.90
MERCER	688	1,418	2.06	2,106	31.5%	2.59
MIDDLESEX	446	1,002	2.25	1,448	-2.7%	2.58
MONMOUTH	202	438	2.17	640	38.8%	2.67
MORRIS	108	174	1.61	282	38.9% Δ	2.64
OCEAN	328	682	2.08	1,010	18.1%	2.87
PASSAIC	843	2,007	2.38	2,850	-4.4% *	2.74
SALEM	140	301	2.15	441	22.8%	2.81
SOMERSET	188	359	1.91	547	9.6%	2.60
SUSSEX	34	54	1.59	88	66.0% Δ	2.67
UNION	756	1,123	1.49	1,879	36.3%	2.74
WARREN	78	163	2.09	241	-8.4% *	2.59
<b>NJ Total</b>	<b>9,806</b>	<b>19,877</b>	<b>2.03</b>	<b>29,683</b>	<b>15.1%</b>	<b>2.69</b>

Δ=higher caseload % change

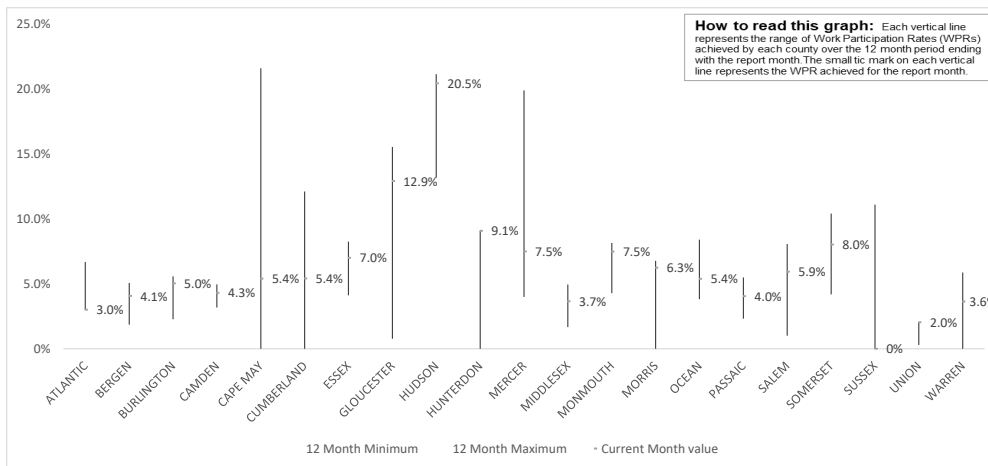
\*=lower caseload % change



Data is derived from NJ MMIS Shared Data Warehouse Issuance files.  
 Effective July 2013 this data query source was converted to the SDW

TABLE 3 :

Work Participation Rates Achieved Over 12 Month Period  
Ending with JANUARY 2023

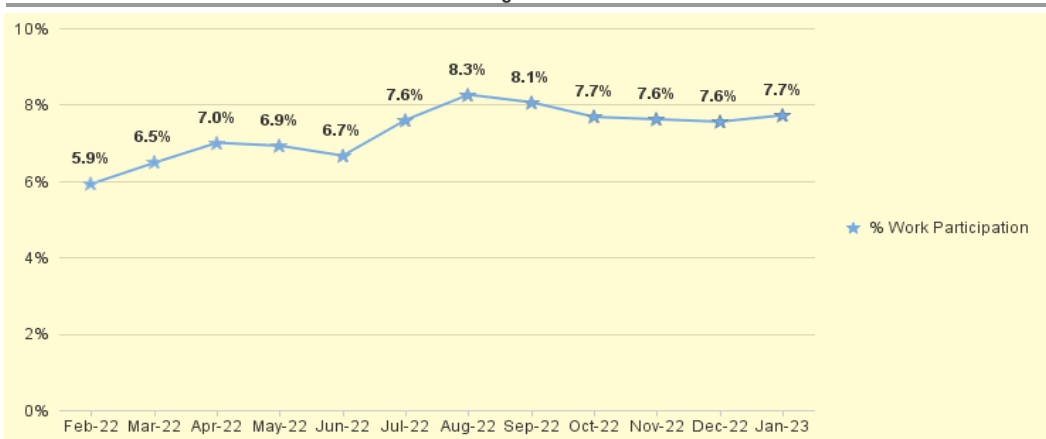


Data is derived from NJ MMIS Shared Data Warehouse Issuance files.  
Effective July 2013 this data query source was converted to the SDW



TABLE 4 :

WFNJ/TANF Work Participation Rates  
for 12-Month Period Ending with JANUARY 2023 Statewide



\* The Work Participation rate measures the number of countable Temporary Assistance for Needs Families (TANF) participants based on federal formula. The reported rate is considered to be preliminary until officially calculated by the federal government soon after the close of each federal fiscal year.

**TABLE 5 :  
NJ SNAP  
(FOOD STAMPS)** **NUMBER OF PARTICIPATING HOUSEHOLDS, PERSONS, ADULTS  
AND CHILDREN FOR JANUARY 2023 (STATEWIDE)**

		HOUSEHOLDS				PERSONS					
		WFNJ/ TANF	Other low income	Total	% CHNG (1 YR)	Adults	Children	TOTAL	% CHNG (1 YR)	Age 60+	People with a disability
<b>2021</b>	JAN	10,214	409,050	<b>419,264</b>	24.8%	454,910	360,490	<b>815,400</b>	23.6%	123,751	221,129
	FEB	9,980	413,080	<b>423,060</b>	25.6%	459,801	362,760	<b>822,561</b>	24.4%	123,888	221,585
	MAR	9,632	418,259	<b>427,891</b>	27.7%	465,302	366,223	<b>831,525</b>	26.5%	124,614	222,961
	APR	9,474	423,186	<b>432,660</b>	24.3%	470,412	369,625	<b>840,037</b>	23.0%	125,182	224,256
	MAY	9,371	428,961	<b>438,332</b>	19.9%	476,827	373,151	<b>849,978</b>	18.4%	125,750	225,339
	JUN	9,833	440,525	<b>450,358</b>	21.8%	490,430	393,310	<b>883,740</b>	21.8%	126,085	227,479
	JUL	9,067	437,889	<b>446,956</b>	18.8%	485,975	379,528	<b>865,503</b>	17.8%	126,552	227,352
	AUG	9,070	442,333	<b>451,403</b>	17.4%	490,577	383,106	<b>873,683</b>	16.7%	127,091	228,513
	SEP	9,561	447,902	<b>457,463</b>	15.8%	497,122	390,345	<b>887,467</b>	15.4%	127,550	229,863
	OCT	9,822	452,139	<b>461,961</b>	14.3%	502,415	388,925	<b>891,340</b>	13.1%	128,700	231,751
	NOV	9,967	455,343	<b>465,310</b>	14.5%	506,476	391,904	<b>898,380</b>	13.6%	129,292	233,050
	DEC	10,138	458,239	<b>468,377</b>	13.8%	510,116	392,757	<b>902,873</b>	12.8%	129,744	238,680
	<b>Average</b>	<b>9,677</b>	<b>435,576</b>	<b>445,253</b>		<b>484,197</b>	<b>379,344</b>	<b>863,541</b>		<b>126,517</b>	<b>227,663</b>
<b>2022</b>	JAN	10,418	457,935	<b>468,353</b>	11.7%	509,801	392,651	<b>902,452</b>	10.7%	157,425	236,238
	FEB	10,486	451,733	<b>462,219</b>	9.3%	503,693	385,199	<b>888,892</b>	8.1%	156,540	232,864
	MAR	10,588	455,766	<b>466,354</b>	9.0%	508,290	388,977	<b>897,267</b>	7.9%	158,331	234,617
	APR	10,706	439,659	<b>450,365</b>	4.1%	491,276	375,105	<b>866,381</b>	3.1%	156,504	231,071
	MAY	10,669	423,672	<b>434,341</b>	-0.9%	474,542	360,324	<b>834,866</b>	-1.8%	154,816	227,400
	JUN	10,650	412,366	<b>423,016</b>	-6.1%	462,757	351,378	<b>814,135</b>	-7.9%	154,107	225,452
	JUL	10,910	400,990	<b>411,900</b>	-7.8%	451,428	343,730	<b>795,158</b>	-8.1%	152,494	222,166
	AUG	12,919	421,433	<b>434,352</b>	-3.8%	475,405	401,190	<b>876,595</b>	0.3%	151,643	224,286
	SEP	11,543	391,350	<b>402,893</b>	-11.9%	440,973	348,303	<b>789,276</b>	-11.1%	150,801	220,166
	OCT	11,175	384,016	<b>395,191</b>	-14.5%	433,352	329,837	<b>763,189</b>	-14.4%	152,434	220,723
	NOV	10,978	386,385	<b>397,363</b>	-14.6%	436,125	332,459	<b>768,584</b>	-14.4%	153,574	221,980
	DEC	11,094	393,042	<b>404,136</b>	-13.7%	443,837	340,993	<b>784,830</b>	-13.1%	155,061	227,586
	<b>Average</b>	<b>11,011</b>	<b>418,196</b>	<b>429,207</b>		<b>469,290</b>	<b>362,512</b>	<b>831,802</b>		<b>154,511</b>	<b>227,191</b>
<b>2023</b>	JAN	11,120	388,312	<b>399,432</b>	-14.7%	438,140	336,442	<b>774,582</b>	-14.2%	153,633	223,462
<b>2023</b>	<b>Average to date</b>	<b>11,120</b>	<b>388,312</b>	<b>399,432</b>		<b>438,140</b>	<b>336,442</b>	<b>774,582</b>		<b>153,633</b>	<b>223,462</b>

This Table is based on those Households & Persons that received SNAP issuances (benefits) during the month

Data is derived from NJ MMIS Shared Data Warehouse.  
Effective July 2013 this data query source was converted to the SDW.

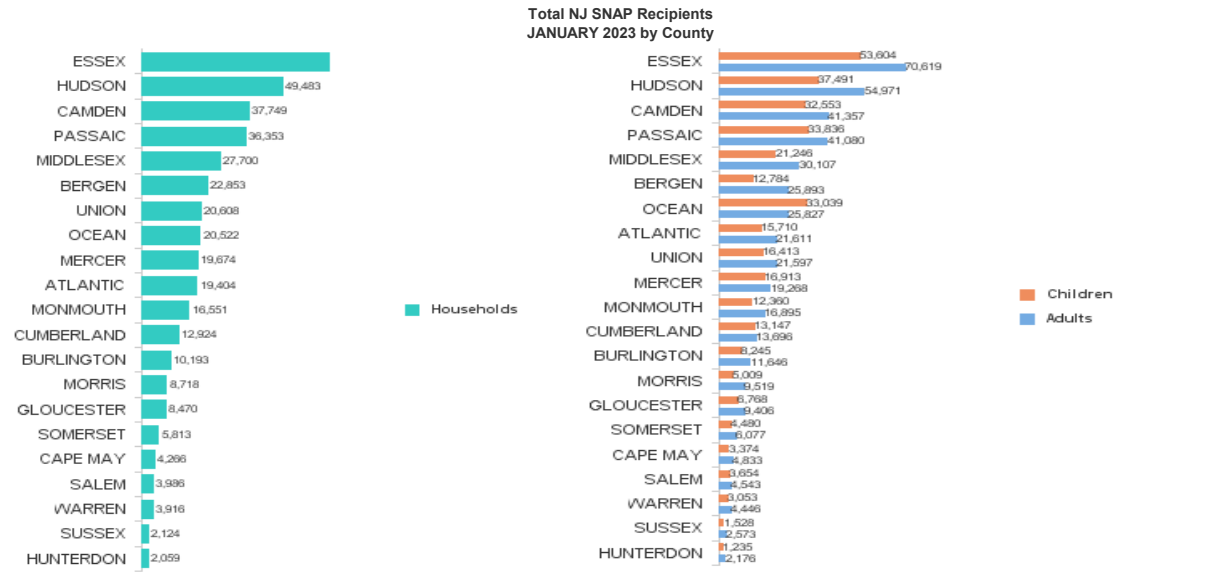
\* Age 60+ and People with a disability columns are independent subsets of total persons. An individual might appear in both columns



**TABLE 7 :**  
**NJ SNAP**  
**NUMBER OF PARTICIPATING HOUSEHOLDS, PERSONS, ADULTS**  
**AND CHILDREN BY COUNTY FOR JANUARY 2023**

County	HOUSEHOLDS				PERSONS				Age 60+	People with a disability
	WFNJ/TANF	Other low income	TOTAL	% Chng (1 Yr)	Adults	Children	TOTAL	% Chng (1 Yr)		
ATLANTIC	604	18,800	19,404	-16.2%	21,611	15,710	37,321	-15.2%	6,831	10,622
BERGEN	433	22,420	22,853	-4.4%	25,893	12,784	38,677	-3.5%	14,104	16,197
BURLINGTON	448	9,745	10,193	-18.4%	11,646	8,245	19,891	-18.8%	3,588	6,442
CAMDEN	1,420	36,329	37,749	-7.4%	41,357	32,553	73,910	-6.6%	10,956	19,905
CAPE MAY	96	4,170	4,266	-2.8%	4,833	3,374	8,207	0.1%	1,363	2,334
CUMBERLAND	309	12,615	12,924	-8.3%	13,696	13,147	26,843	-7.4%	3,629	7,116
ESSEX	1,731	64,335	66,066	-17.6%	70,619	53,604	124,223	-17.6%	20,528	31,597
GLOUCESTER	243	8,227	8,470	-12.8%	9,406	6,768	16,174	-12.6%	3,050	5,982
HUDSON	1,603	47,880	49,483	-25.8% *	54,971	37,491	92,462	-24.1% *	21,651	27,709
HUNTERDON	57	2,002	2,059	2.0% Δ	2,176	1,235	3,411	0.6% Δ	796	1,188
MERCER	810	18,864	19,674	-1.4% Δ	19,268	16,913	36,181	-1.4%	5,775	10,740
MIDDLESEX	578	27,122	27,700	-9.8%	30,107	21,246	51,353	-10.4%	13,729	17,475
MONMOUTH	256	16,295	16,551	-10.4%	16,895	12,360	29,255	-10.4%	6,911	9,955
MORRIS	117	8,601	8,718	-3.5%	9,519	5,009	14,528	-4.1%	4,860	5,506
OCEAN	360	20,162	20,522	-0.4% Δ	25,827	33,039	58,866	0.5% Δ	6,852	10,805
PASSAIC	994	35,359	36,353	-23.4% *	41,080	33,836	74,916	-23.4% *	14,797	18,758
SALEM	150	3,836	3,986	-3.6%	4,543	3,654	8,197	-2.8%	1,183	2,320
SOMERSET	192	5,621	5,813	-8.9%	6,077	4,480	10,557	-8.4%	2,532	3,509
SUSSEX	41	2,083	2,124	-2.9%	2,573	1,528	4,101	0.3% Δ	895	1,545
UNION	582	20,026	20,608	-26.1% *	21,597	16,413	38,010	-28.2% *	8,234	11,292
WARREN	96	3,820	3,916	-5.2%	4,446	3,053	7,499	-5.4%	1,369	2,465
<b>NJ TOTAL</b>	<b>11,120</b>	<b>388,312</b>	<b>399,432</b>	<b>-14.7%</b>	<b>438,140</b>	<b>336,442</b>	<b>774,582</b>	<b>-14.2%</b>	<b>153,633</b>	<b>223,462</b>

Δ=higher caseload % change      \*=lower caseload % change



Data is derived from NJ MMIS Shared Data Warehouse.

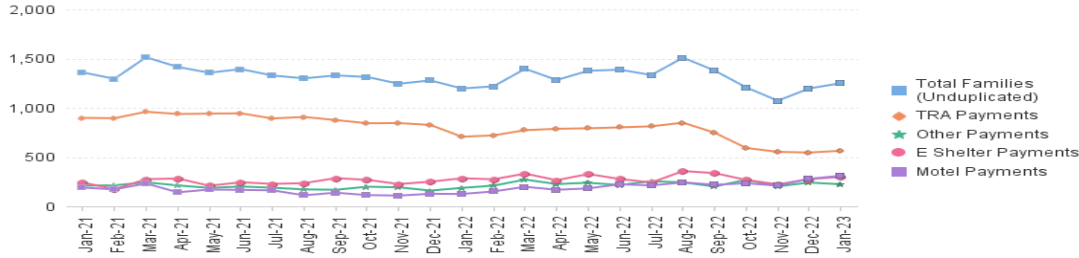
Effective July 2013 this data query source was converted to the SDW.

\* Age 60+ and People with a disability columns are independent subsets of total persons. An individual might appear in both columns

**TABLE 8 :**  
**EMERGENCY ASSISTANCE (STATEWIDE)**  
**TOTAL NUMBER OF ELIGIBLE FAMILIES RECEIVING EMERGENCY ASSISTANCE PAYMENTS**  
**JANUARY 2021 THROUGH JANUARY 2023 - STATEWIDE**

		Total WFNJ/EA Families (Undupl)		Temp Rent Asst. Payments (Undupl)		Motel Housing Payments (Undupl)		Shelter/Transitional Housing Payments (Undupl)		Other WFNJ/EA Payments (Undupl)	
			% CHNG (1 YR)		% CHNG (1 YR)		% CHNG (1 YR)		% CHNG (1 YR)		% CHNG (1 YR)
<b>2021</b>	JAN	1,359	-23.1%	898	-5.4%	190	-24.3%	242	-42.7%	210	-59.1%
	FEB	1,294	-19.1%	894	-4.1%	172	-5.0%	174	-52.3%	213	-47.9%
	MAR	1,513	-12.2%	960	-2.0%	232	19.0%	275	-32.3%	244	-47.2%
	APR	1,415	-2.7%	937	-2.4%	142	-7.2%	283	-15.3%	212	47.2%
	MAY	1,356	-6.1%	941	5.7%	170	-28.6%	209	-22.6%	187	14.7%
	JUN	1,393	-14.6%	944	-6.9%	167	-37.0%	244	-20.0%	201	-14.1%
	JUL	1,328	-14.7%	892	-12.0%	162	-35.5%	228	-10.2%	189	-19.2%
	AUG	1,299	-20.0%	907	-9.8%	112	-59.9%	235	-22.4%	172	-27.7%
	SEP	1,329	-18.2%	876	-13.9%	138	-46.5%	286	-2.7%	168	-28.2%
	OCT	1,313	-15.7%	843	-15.4%	114	-43.3%	269	-7.9%	199	-19.4%
	NOV	1,244	-7.4%	845	-10.9%	109	-35.9%	226	25.6%	193	-5.4%
	DEC	1,278	-8.4%	826	-12.0%	127	-35.2%	250	21.4%	160	-20.4%
<b>2021</b>	<b>Average</b>	<b>1,343</b>		<b>897</b>		<b>153</b>		<b>243</b>		<b>196</b>	
<b>2022</b>	JAN	1,196	-12.0%	706	-21.4%	125	-34.2%	285	17.8%	187	-11.0%
	FEB	1,218	-5.9%	720	-19.5%	151	-12.2%	274	57.5%	210	-1.4%
	MAR	1,396	-7.7%	773	-19.5%	198	-14.7%	332	20.7%	271	11.1%
	APR	1,282	-9.4%	787	-16.0%	168	18.3%	265	-6.4%	226	6.6%
	MAY	1,376	1.5%	792	-15.8%	182	7.1%	328	56.9%	239	27.8%
	JUN	1,387	-0.4%	801	-15.1%	224	34.1%	277	13.5%	216	7.5%
	JUL	1,333	0.4%	812	-9.0%	212	30.9%	242	6.1%	255	34.9%
	AUG	1,509	16.2%	849	-6.4%	243	117.0%	358	52.3%	243	41.3%
	SEP	1,378	3.7%	747	-14.7%	219	58.7%	337	17.8%	201	19.6%
	OCT	1,207	-8.1%	592	-29.8%	234	105.3%	268	-0.4%	269	35.2%
	NOV	1,072	-13.8%	553	-34.6%	210	92.7%	223	-1.3%	203	5.2%
	DEC	1,197	-6.3%	546	-33.9%	280	120.5%	276	10.4%	241	50.6%
<b>2022</b>	<b>Average</b>	<b>1,296</b>		<b>723</b>		<b>204</b>		<b>289</b>		<b>230</b>	
<b>2023</b>	JAN	1,250	4.5%	564	-20.1%	310	148.0%	299	4.9%	224	19.8%
<b>2023</b>	<b>Average to date</b>	<b>1,250</b>		<b>564</b>		<b>310</b>		<b>299</b>		<b>224</b>	

**NJ STATEWIDE**  
**Families Receiving Emergency Assistance**  
**JANUARY 2021 THROUGH JANUARY 2023**



WFNJ/EA data is derived from NJ MMIS Shared Data Warehouse.

Effective July 2013 this data query source was converted to the SDW.

\* Effective Feb '11 Transitional Housing Payments were removed from 'Other EA Payments' and added to 'Shelter Payments'.

**TABLE 9 :**  
**EMERGENCY ASSISTANCE (BY COUNTY)**  
**TOTAL NUMBER OF ELIGIBLE FAMILIES RECEIVING EMERGENCY ASSISTANCE PAYMENTS BY COUNTY (UNDUPLICATED CASES) FOR JANUARY 2023**

County	TOTAL WFNJ/EA Families (Undupl)	% CHNG From JAN 22	Temp Rent Asst. Payments (Undupl)	Motel Housing Payments (Undupl)	Shelter/Transitional Housing Payments (Undupl)	Other WFNJ/EA Payments (Undupl)	SSI Recipients Receiving EA **
ATLANTIC	16	-61.9% *	10	2	0	6	28
BERGEN	27	-28.9%	19	0	3	7	42
BURLINGTON	150	163.2% Δ	4	101	46	3	71
CAMDEN	23	-47.7% *	5	7	6	6	18
CAPE MAY	20	122.2% Δ	8	12	0	2	17
CUMBERLAND	1	0%	0	0	1	0	0
ESSEX	90	-26.2%	31	0	48	15	9
GLOUCESTER	10	0%	1	0	0	10	7
HUDSON	256	33.3%	179	21	47	55	110
HUNTERDON	5	-16.7%	3	0	0	2	4
MERCER	145	35.5%	71	30	37	37	104
MIDDLESEX	75	-1.3%	39	26	8	12	34
MONMOUTH	39	62.5%	0	12	27	3	32
MORRIS	25	127.3% Δ	6	18	1	2	24
OCEAN	44	-47.6% *	27	14	0	8	23
PASSAIC	132	-38.0%	79	4	33	27	14
SALEM	4	100.0%	3	0	1	0	2
SOMERSET	64	8.5%	42	6	11	17	50
SUSSEX	2	-33.3%	0	1	1	0	1
UNION	111	42.3%	36	50	27	10	33
WARREN	11	-38.9%	1	6	2	2	2
<b>NJ Total</b>	<b>1,250</b>	<b>4.5%</b>	<b>564</b>	<b>310</b>	<b>299</b>	<b>224</b>	<b>625</b>

Δ=higher caseload % change

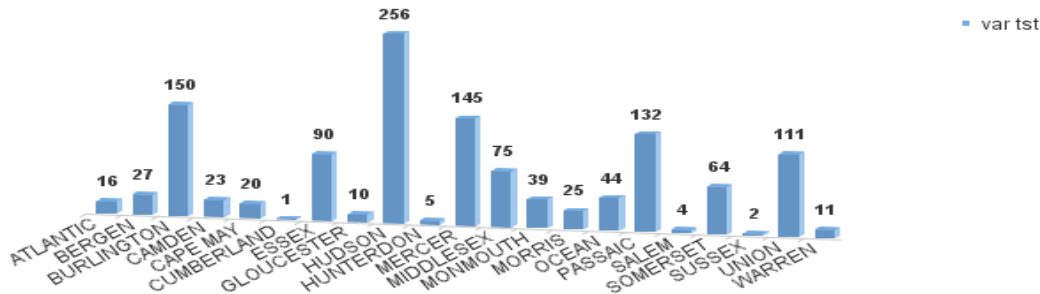
\*=lower caseload % change

\*\* SSI-EA includes pay codes 22 and 24, data is derived from NJ Division of Family Development FAMIS Report #FM430-03A

WFNJ/EA data is derived from NJ MMIS Shared Data Warehouse.

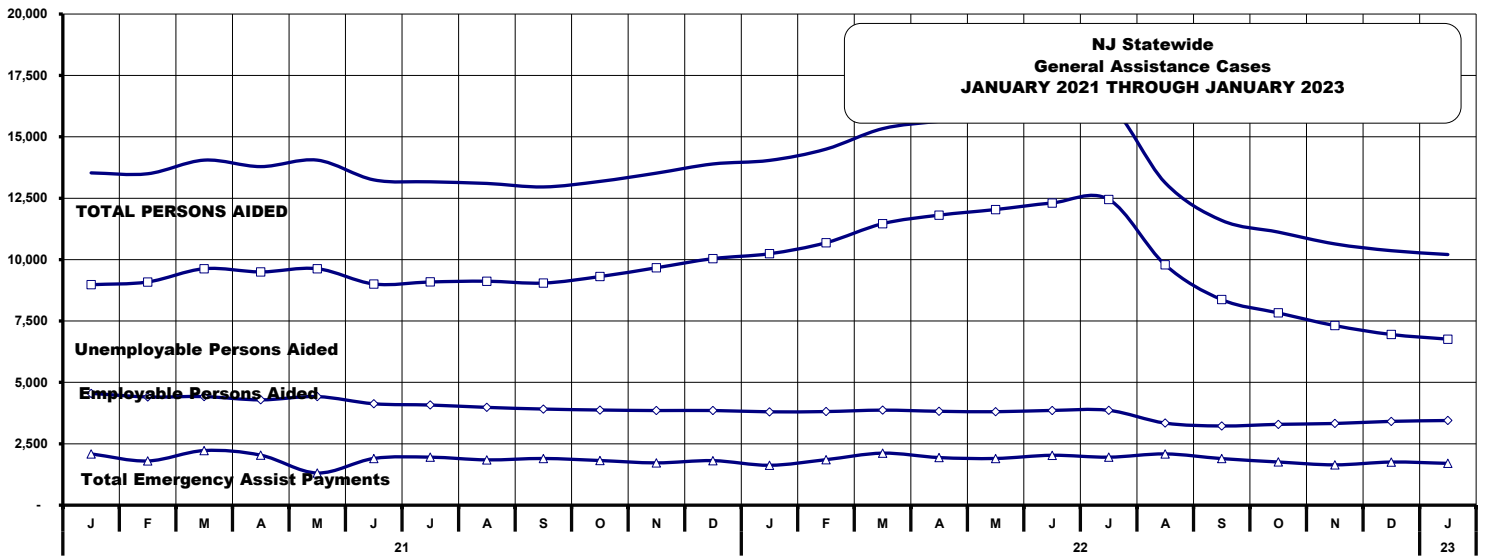
Effective July 2013 this data query source was converted to the SDW.

**Number WFNJ Families Receiving EA by County JANUARY 2023**



**TABLE 10: GENERAL ASSISTANCE PROGRAM**  
**NUMBER OF EMPLOYABLE AND UNEMPLOYABLE RECIPIENTS AND EMERGENCY ASSISTANCE PAYMENTS - STATEWIDE**  
**JANUARY 2021 THROUGH JANUARY 2023**

PROGRAM	Total Cases						Emergency Assistance Cases			
	Employable	% Chng (1 Yr)	Unemployable	% Chng (1 Yr)	Total	% Chng (1 Yr)	Temporary Rental Assistance	Other GA-EA	Total	% Chng (1 Yr)
<b>2021</b> JAN	8,978	118.5%	4,553	-23.1%	13,531	34.9%	848	1,240	2,088	-1.8%
FEB	9,089	116.1%	4,407	-25.7%	13,496	33.2%	809	991	1,800	-10.3%
MAR	9,630	97.8%	4,421	-26.2%	14,051	29.4%	819	1,405	2,224	11.4%
APR	9,499	70.0%	4,288	-26.9%	13,787	20.4%	832	1,204	2,036	15.2%
MAY	9,630	38.8%	4,421	-23.6%	14,051	10.5%	819	491	1,310	-28.7%
JUN	9,007	18.7%	4,130	-32.8%	13,247	0.1%	794	1,108	1,902	-12.4%
JUL	9,090	13.7%	4,078	-26.1%	13,168	-2.6%	833	1,121	1,954	-9.6%
AUG	9,120	12.3%	3,982	-24.3%	13,102	-2.1%	753	1,091	1,844	-10.6%
SEP	9,045	10.6%	3,914	-23.7%	12,959	-2.6%	787	1,114	1,901	-12.9%
OCT	9,309	14.1%	3,875	-22.3%	13,184	0.3%	757	1,061	1,818	-7.3%
NOV	9,668	17.5%	3,853	-20.1%	13,521	3.6%	711	1,011	1,722	0.2%
DEC	10,040	17.6%	3,855	-17.8%	13,895	5.0%	742	1,071	1,813	-6.7%
<b>2021 AVERAGE</b>	<b>9,342</b>		<b>4,148</b>		<b>13,499</b>		<b>792</b>	<b>1,076</b>	<b>1,868</b>	
<b>2022</b> JAN	10,239	14.0%	3,801	-16.5%	14,040	3.8%	677	947	1,624	-22.2%
FEB	10,687	17.6%	3,812	-13.5%	14,499	7.4%	727	1,126	1,853	2.9%
MAR	11,462	19.0%	3,870	-12.5%	15,332	9.1%	719	1,399	2,118	-4.8%
APR	11,810	24.3%	3,823	-10.8%	15,633	13.4%	742	1,196	1,938	-4.8%
MAY	12,039	25.0%	3,805	-13.9%	15,844	12.8%	750	1,152	1,902	45.2%
JUN	12,306	36.6%	3,858	-6.6%	16,164	22.0%	782	1,250	2,032	6.8%
JUL	12,451	37.0%	3,862	-5.3%	16,313	23.9%	758	1,196	1,954	0.0%
AUG	9,785	7.3%	3,342	-16.1%	13,127	0.2%	691	1,396	2,087	13.2%
SEP	8,370	-7.5%	3,225	-17.6%	11,595	-10.5%	635	1,261	1,896	-0.3%
OCT	7,829	-15.9%	3,291	-15.1%	11,120	-15.7%	574	1,184	1,758	-3.3%
NOV	7,313	-24.4%	3,326	-13.7%	10,639	-21.3%	602	1,040	1,642	-4.6%
DEC	6,950	-30.8%	3,413	-11.5%	10,363	-25.4%	599	1,157	1,756	-3.1%
<b>2022 AVERAGE</b>	<b>10,103</b>		<b>3,619</b>		<b>13,722</b>		<b>688</b>	<b>1,192</b>	<b>1,880</b>	
<b>2023</b> JAN	6,760	-34.0%	3,447	-9.3%	10,207	-27.3%	590	1,112	1,702	4.8%
<b>2023 AVERAGE TO DATE</b>	<b>6,760</b>		<b>3,447</b>		<b>10,207</b>		<b>590</b>	<b>1,112</b>	<b>1,702</b>	



**TABLE 11: EMPLOYABLE AND UNEMPLOYABLE CASES AND EMERGENCY ASSISTANCE CASES RECEIVING PAYMENTS BY COUNTY JANUARY 2023**

ASSISTANCE PROGRAM	Total Cases						Emergency Assistance Cases			
	Employable	% Chng (1 Yr)	Unemployable	% Chng (1 Yr)	Total	% Chng (1 Yr)	Temporary Rental Assistance	Other GA-EA	Total	% Chng (1 Yr)
ATLANTIC	769	-20.8%	150	-14.3%	919	-19.8%	55	27	82	-13.7%
BERGEN	226	-35.6%	255	50.9%	481	-7.5%	70	25	95	111.1% Δ
BURLINGTON	276	-28.1%	127	-38.6%	403	-31.8%	13	113	126	18.9%
CAMDEN	1,076	-32.8%	410	-13.1%	1,486	-28.3%	28	81	109	-10.7%
CAPE MAY	107	-1.8%	38	2.7%	145	-0.7%	9	20	29	-9.4%
CUMBERLAND	224	-27.5%	148	72.1%	372	-5.8%	0	13	13	0.0%
ESSEX	623	-40.4%	222	-24.0%	845	-36.8%	10	148	158	-23.7%
GLOUCESTER	152	-1.9%	117	7.3%	269	1.9%	1	8	9	50.0%
HUDSON	826	-55.2%	275	-43.6%	1,101	-52.8%	90	61	151	-17.5%
HUNTERDON	93	-16.2%	72	63.6%	165	6.5%	10	20	30	-11.8%
MERCER	363	-10.8%	230	-11.2%	593	-11.0%	45	36	81	-6.9%
MIDDLESEX	214	-56.1%	299	-9.7%	513	-37.4%	62	67	129	-1.5%
MONMOUTH	170	-34.4%	186	16.3%	356	-15.0%	1	92	93	82.4%
MORRIS	172	8.9%	146	-5.8%	318	1.6%	45	42	87	27.9%
OCEAN	252	-31.5%	214	1.4%	466	-19.5%	34	31	65	-44.9%
PASSAIC	271	-51.7%	163	-46.6%	434	-49.9%	32	17	49	-25.8%
SALEM	63	-55.9%	55	111.5%	118	-30.2%	1	3	4	100.0% Δ
SOMERSET	181	7.1%	63	18.9%	244	9.9%	36	49	85	3.7%
SUSSEX	28	-51.7%	29	31.8%	57	-28.8%	0	4	4	-71.4%
UNION	602	-3.8%	179	33.6%	781	2.8%	39	239	278	109.0% Δ
WARREN	72	-41.0%	69	4.5%	141	-25.0%	9	16	25	-40.5%
<b>NJ TOTAL</b>	<b>6,760</b>	<b>-34.0%</b>	<b>3,447</b>	<b>-9.3%</b>	<b>10,207</b>	<b>-27.3%</b>	<b>590</b>	<b>1,112</b>	<b>1,702</b>	<b>4.8%</b>

Δ = ↑ Caseload %

\* = ↓ Caseload %



**TABLE 12:  
OFFICE OF  
CHILD SUPPORT  
SERVICES**

**OFFICE OF CHILD SUPPORT SERVICES  
QUARTERLY PERFORMANCE REPORT  
STATE SUMMARY  
TITLE IV-D SOURCE COLLECTION REPORT  
Comparison of Quarter-1 (FFY 2022 vs. FFY 2023)**

COLLECTION SOURCE	TOTAL 10/1/2021 - 12/31/2021	% OF TOTAL COLLECTIONS	TOTAL 10/1/2022 - 12/31/2022	% OF TOTAL COLLECTIONS	DOLLAR CHANGE	% CHANGE
FEDERAL TAX	\$2,869,915	1.06%	\$2,961,234	1.15%	\$ 91,319	3.18%
STATE TAX	\$452,264	0.17%	\$426,243	0.17%	\$ (26,021)	-5.75%
UIB	\$10,371,973	3.83%	\$4,946,061	1.92%	\$ (5,425,912)	-52.31%
INC WITHHOLD	\$185,522,295	68.59%	\$183,380,696	71.32%	\$ (2,141,599)	-1.15%
FROM OTHER STATES	\$10,175,306	3.76%	\$10,082,545	3.92%	\$ (92,761)	-0.91%
ADMIN ENFORCEMENT	\$5,398,428	2.00%	\$4,104,769	0.02%	\$ (1,293,659)	-23.96%
OTHER	\$55,701,991	20.59%	\$51,204,946	19.92%	\$ (4,497,045)	-8.07%
<b>TOTAL COLLECTIONS*</b>	<b>\$270,492,172</b>	<b>100%</b>	<b>\$257,106,494</b>	<b>100%</b>	<b>\$ (13,385,678)</b>	<b>-4.95%</b>
<b>DISBURSED COLLECTIONS**</b>	<b>\$235,854,384</b>		<b>\$223,277,704</b>		<b>\$ (12,576,680)</b>	<b>-5.33%</b>

\* Includes collections on both current support and arrears.

\*\* Includes collections on both current support and arrears; also includes money sent to other states.

SOURCE: NJKiDS (Based on Federal Quarterly Report of Collections - OCSE-34A except Disbursed Collections)

Disbursed Collections obtained from Federal Data Report - OCSE-157, which is reported annually to Congress and used in the calculation of incentive dollars earned by each state.

**TABLE 13:  
OFFICE OF  
CHILD SUPPORT  
SERVICES**

**OFFICE OF CHILD SUPPORT SERVICES  
STATE SUMMARY  
TITLE IV-D PATERNITY ESTABLISHMENT REPORT**  
Comparison of January (FFY 2022 vs. FFY 2023)

County	JANUARY 2022			JANUARY 2023			Increase or Decrease (-) from FFY 2022 to FFY 2023
	Total Children Born Out of Wedlock*	Number of Paternities Established	Percent of Paternities Established	Total Children Born Out of Wedlock*	Number of Paternities Established	Percent of Paternities Established	
Atlantic	5,419	5,414	99.9%	4,976	4,959	99.7%	-0.2%
Bergen	2,708	2,656	98.1%	2,515	2,469	98.2%	0.1%
Burlington	4,186	4,086	97.6%	3,803	3,706	97.4%	-0.2%
Camden	13,739	13,459	98.0%	12,631	12,337	97.7%	-0.3%
Cape May	1,040	1,029	98.9%	900	901	100.1%	1.2%
Cumberland	5,860	5,794	98.9%	5,465	5,439	99.5%	0.7%
Essex	20,960	20,073	95.8%	19,143	18,252	95.3%	-0.4%
Gloucester	3,717	3,684	99.1%	3,359	3,337	99.3%	0.2%
Hudson	8,346	8,062	96.6%	7,785	7,512	96.5%	-0.1%
Hunterdon	198	196	99.0%	168	173	103.0%	4.0%
Mercer	5,769	5,616	97.3%	5,265	5,115	97.2%	-0.2%
Middlesex	5,477	5,323	97.2%	5,033	4,914	97.6%	0.4%
Monmouth	4,107	3,996	97.3%	3,684	3,587	97.4%	0.1%
Morris	1,036	1,032	99.6%	924	914	98.9%	-0.7%
Ocean	4,170	4,075	97.7%	3,834	3,780	98.6%	0.9%
Passaic	8,547	8,311	97.2%	7,730	7,535	97.5%	0.2%
Salem	2,411	2,316	96.1%	2,333	2,261	96.9%	0.9%
Somerset	1,175	1,150	97.9%	1,030	1,011	98.2%	0.3%
Sussex	422	416	98.6%	395	402	101.8%	3.2%
Union	9,063	8,658	95.5%	8,631	8,247	95.6%	0.0%
Warren	674	679	100.7%	590	590	100.0%	-0.7%
<b>NJ TOTALS</b>	<b>109,024</b>	<b>106,025</b>	<b>97.2%</b>	<b>100,194</b>	<b>97,441</b>	<b>97.3%</b>	<b>0.0%</b>

SOURCE: NJKiDS (Based on Federal Performance Measures - OCSE-157)

\* Information on Out of Wedlock Births obtained from NJ Bureau of Vital Statistics

**TABLE 14:  
OFFICE OF  
CHILD SUPPORT  
SERVICES**

**OFFICE OF CHILD SUPPORT SERVICES  
STATE SUMMARY  
TITLE IV-D REPORT OF CASES WITH ORDERS**  
Comparison of January (FFY 2022 vs. FFY 2023)

County	JANUARY 2022			JANUARY 2023			Increase or Decrease (-) from FFY 2022 to FFY 2023
	Total Cases	Cases with Orders	% of Cases with Orders	Total Cases	Cases with Orders	% of Cases with Orders	
Atlantic	10,198	9,453	92.7%	9,675	8,952	92.5%	-0.2%
Bergen	10,352	10,090	97.5%	9,997	9,699	97.0%	-0.4%
Burlington	11,308	10,674	94.4%	11,024	10,161	92.2%	-2.2%
Camden	25,154	23,949	95.2%	24,161	22,656	93.8%	-1.4%
Cape May	2,614	2,486	95.1%	2,428	2,312	95.2%	0.1%
Cumberland	10,640	10,175	95.6%	10,244	9,673	94.4%	-1.2%
Essex	34,951	30,733	87.9%	33,602	29,159	86.8%	-1.2%
Gloucester	9,074	8,673	95.6%	8,630	8,238	95.5%	-0.1%
Hudson	17,256	15,584	90.3%	16,880	15,083	89.4%	-1.0%
Hunterdon	1,232	1,158	94.0%	1,122	1,055	94.0%	0.0%
Mercer	11,357	10,411	91.7%	11,180	9,945	89.0%	-2.7%
Middlesex	15,068	14,143	93.9%	14,694	13,581	92.4%	-1.4%
Monmouth	11,320	10,787	95.3%	10,670	10,039	94.1%	-1.2%
Morris	5,044	4,875	96.6%	4,765	4,619	96.9%	0.3%
Ocean	12,632	12,149	96.2%	12,036	11,547	95.9%	-0.2%
Passaic	16,637	14,719	88.5%	15,860	13,960	88.0%	-0.5%
Salem	3,667	3,503	95.5%	3,550	3,355	94.5%	-1.0%
Somerset	3,937	3,708	94.2%	3,782	3,447	91.1%	-3.0%
Sussex	2,248	2,216	98.6%	2,188	2,133	97.5%	-1.1%
Union	16,125	15,295	94.9%	15,575	14,679	94.2%	-0.6%
Warren	2,326	2,216	95.3%	2,173	2,062	94.9%	-0.4%
<b>NJ TOTALS</b>	<b>233,140</b>	<b>216,997</b>	<b>93.1%</b>	<b>224,236</b>	<b>206,355</b>	<b>92.0%</b>	<b>-1.1%</b>

SOURCE: NJKiDS (Based on Federal Performance Measures - OCSE-157)

**TABLE 15:  
OFFICE OF  
CHILD SUPPORT  
SERVICES**

**OFFICE OF CHILD SUPPORT SERVICES  
STATE SUMMARY  
TITLE IV-D COLLECTIONS ON CURRENT SUPPORT**  
Comparison of January (FFY 2022 vs. FFY 2023)

County	JANUARY 2022			JANUARY 2023			Increase or Decrease (-) from FFY 2022 to FFY 2023
	Total Current Support Due	Total Current Support Distributed	Total Collection Rate	Total Current Support Due	Total Current Support Distributed	Total Collection Rate	
Atlantic	\$3,316,893	\$2,030,876	61.2%	\$3,361,552	\$2,115,155	62.9%	1.7%
Bergen	\$7,363,026	\$5,381,339	73.1%	\$7,251,748	\$5,376,095	74.1%	1.0%
Burlington	\$4,898,229	\$3,244,947	66.2%	\$4,936,312	\$3,321,273	67.3%	1.0%
Camden	\$6,995,730	\$3,976,540	56.8%	\$6,958,395	\$4,052,253	58.2%	1.4%
Cape May	\$950,514	\$608,262	64.0%	\$909,123	\$589,767	64.9%	0.9%
Cumberland	\$2,677,644	\$1,481,419	55.3%	\$2,728,340	\$1,558,385	57.1%	1.8%
Essex	\$9,270,255	\$5,195,547	56.0%	\$9,395,356	\$5,482,250	58.4%	2.3%
Gloucester	\$3,645,128	\$2,368,208	65.0%	\$3,571,042	\$2,337,139	65.4%	0.5%
Hudson	\$6,400,955	\$4,135,675	64.6%	\$6,571,806	\$4,223,887	64.3%	-0.3%
Hunterdon	\$1,054,368	\$861,260	81.7%	\$964,313	\$801,767	83.1%	1.5%
Mercer	\$3,485,198	\$2,153,754	61.8%	\$3,566,541	\$2,226,836	62.4%	0.6%
Middlesex	\$6,593,280	\$4,383,194	66.5%	\$6,623,698	\$4,427,554	66.8%	0.4%
Monmouth	\$6,077,126	\$4,364,733	71.8%	\$5,858,314	\$4,239,020	72.4%	0.5%
Morris	\$3,872,355	\$2,813,308	72.7%	\$3,734,908	\$2,695,982	72.2%	-0.5%
Ocean	\$5,751,975	\$3,967,729	69.0%	\$5,638,932	\$3,961,412	70.3%	1.3%
Passaic	\$5,637,032	\$3,443,979	61.1%	\$5,587,489	\$3,490,750	62.5%	1.4%
Salem	\$952,480	\$565,055	59.3%	\$1,009,803	\$590,295	58.5%	-0.9%
Somerset	\$2,540,817	\$2,021,812	79.6%	\$2,370,402	\$1,910,561	80.6%	1.0%
Sussex	\$1,558,810	\$1,161,941	74.5%	\$1,526,430	\$1,133,382	74.3%	-0.3%
Union	\$6,094,995	\$4,007,844	65.8%	\$6,246,548	\$4,102,635	65.7%	-0.1%
Warren	\$1,083,463	\$782,834	72.3%	\$1,074,334	\$784,960	73.1%	0.8%
<b>NJ TOTALS</b>	<b>\$90,220,273</b>	<b>\$58,950,256</b>	<b>65.3%</b>	<b>\$89,885,385</b>	<b>\$59,421,358</b>	<b>66.1%</b>	<b>0.8%</b>

SOURCE: NJKiDS (Based on Federal Performance Measures - OCSE-157)

**TABLE 16:  
OFFICE OF  
CHILD SUPPORT  
SERVICES**

**OFFICE OF CHILD SUPPORT SERVICES  
STATE SUMMARY  
TITLE IV-D CASES ARREARS COLLECTION REPORT**

Comparison of January (FFY 2022 vs. FFY 2023)

County	JANUARY 2022			JANUARY 2023			Increase or Decrease (-) from FFY 2022 to FFY 2023
	Total Cases with Arrears	Total Amount Collected	Average Arrears Collection per Case	Total Cases with Arrears	Total Amount Collected	Average Arrears Collection per Case	
Atlantic	6,302	\$571,252	\$90.65	6,055	\$646,874	\$106.83	\$16.19
Bergen	6,670	\$1,088,236	\$163.15	6,445	\$942,373	\$146.22	-\$16.94
Burlington	7,041	\$703,593	\$99.93	6,738	\$762,756	\$113.20	\$13.27
Camden	14,522	\$1,151,329	\$79.28	13,872	\$1,164,172	\$83.92	\$4.64
Cape May	1,664	\$124,921	\$75.07	1,585	\$159,283	\$100.49	\$25.42
Cumberland	6,327	\$437,601	\$69.16	6,020	\$466,168	\$77.44	\$8.27
Essex	18,967	\$1,860,856	\$98.11	18,044	\$1,889,626	\$104.72	\$6.61
Gloucester	5,747	\$557,659	\$97.03	5,462	\$552,744	\$101.20	\$4.16
Hudson	10,547	\$923,582	\$87.57	10,404	\$1,048,050	\$100.74	\$13.17
Hunterdon	746	\$101,719	\$136.35	666	\$119,712	\$179.75	\$43.39
Mercer	6,932	\$620,971	\$89.58	6,709	\$741,301	\$110.49	\$20.91
Middlesex	9,312	\$1,016,377	\$109.15	9,039	\$1,000,089	\$110.64	\$1.49
Monmouth	6,988	\$860,462	\$123.13	6,503	\$1,145,279	\$176.12	\$52.98
Morris	3,278	\$457,275	\$139.50	3,087	\$437,726	\$141.80	\$2.30
Ocean	7,580	\$785,322	\$103.60	7,316	\$905,621	\$123.79	\$20.18
Passaic	9,798	\$937,817	\$95.72	9,369	\$964,783	\$102.98	\$7.26
Salem	2,156	\$150,638	\$69.87	2,074	\$180,634	\$87.09	\$17.23
Somerset	2,415	\$343,082	\$142.06	2,282	\$329,133	\$144.23	\$2.17
Sussex	1,452	\$189,314	\$130.38	1,433	\$183,938	\$128.36	-\$2.02
Union	9,897	\$1,043,206	\$105.41	9,542	\$1,084,027	\$113.61	\$8.20
Warren	1,479	\$133,583	\$90.32	1,385	\$159,817	\$115.39	\$25.07
<b>NJ TOTALS</b>	<b>139,820</b>	<b>\$14,058,797</b>	<b>\$100.55</b>	<b>134,030</b>	<b>\$14,884,106</b>	<b>\$111.05</b>	<b>\$10.50</b>

SOURCE: OCSE-157 Child Support Enforcement Annual Data Report

**Table 17 WORK FIRST NEW JERSEY STATISTICAL SUMMARY**

**WFNJ**

**January 2023**

COUNTY	EMPLOYMENT DIRECTED ACTIVITIES			EMPLOYED OPEN (WFNJ RECIPIENT)	SUPPORT SERVICES ON ACTIVE CASE		CLOSED FOR EMPLOYMENT THIS MONTH	POST ASSISTANCE CHILD CARE
	CWEP	ALL	JOB SEARCH		CHILD CARE	TRAINING REL. EXPENSES		
		OTHER TRAINING						
<b>ATLANTIC</b>	8	56	12	27	20	22	13	15
<b>BERGEN</b>	42	5	88	19	36	7	5	3
<b>BURLINGTON</b>	85	15	50	22	29	17	6	7
<b>CAMDEN</b>	51	135	4	62	60	2	8	6
<b>CAPE MAY</b>	0	8	13	5	0	4	1	2
<b>CUMBERLAND</b>	0	16	28	9	14	35	6	3
<b>ESSEX</b>	26	137	12	72	46	81	14	44
<b>GLOUCESTER</b>	21	4	0	30	15	6	5	3
<b>HUDSON</b>	1	380	46	101	211	122	37	11
<b>HUNTERDON</b>	0	0	0	0	1	0	0	2
<b>MERCER</b>	75	157	23	49	93	31	11	54
<b>MIDDLESEX</b>	0	34	53	19	22	0	9	6
<b>MONMOUTH</b>	1	15	8	20	18	7	4	19
<b>MORRIS</b>	0	11	0	2	1	0	4	1
<b>OCEAN</b>	0	96	0	5	12	9	1	14
<b>PASSAIC</b>	12	116	0	17	29	8	16	7
<b>SALEM</b>	0	14	5	4	9	1	1	0
<b>SOMERSET</b>	19	4	4	11	11	17	5	1
<b>SUSSEX</b>	0	1	4	2	0	0	3	1
<b>UNION</b>	31	57	0	8	11	1	3	1
<b>WARREN</b>	0	4	0	6	1	0	0	3
<b>STATE TOTAL</b>	<b>372</b>	<b>1,265</b>	<b>350</b>	<b>490</b>	<b>639</b>	<b>370</b>	<b>152</b>	<b>203</b>

Data is derived from NJ Division of Family Development's FAMIS Reports RM064-01 & RM703-51, AdHoc Reports 5549 & 5598 and SDW Report WR00022WZ\_CC

## ACRONYMS

**EMERGENCY ASSISTANCE (EA)** - Payments to those eligible for WFNJ/TANF or WFNJ/GA, authorized during the 30 consecutive days immediately following the emergency (defined as a substantial loss of shelter, food, clothing, or household furnishings by fire, flood or other similar disaster) or if eligible individual or family is in an imminent or actual state of homelessness.

**NJ SNAP** - Formerly the Food Stamp Program, now known as NJ SNAP (NJ Supplemental Nutrition Assistance Program) authorized by Congress as a nutritional supplement program to provide low income households with more food of greater variety and better nutrition. Program eligibility is based on household income, resources, and expenses for medical, shelter, and dependent care. CWA staff refers certain recipients to the New Jersey Department of Labor for participation in the Food Stamp Employment and Training Program.

**FAMIS:** Family Assistance Management Information System

**GAAS:** General Assistance Automated System

**NJKiDS:** New Jersey Kids Deserve Support (Child Support Information Management System)

**NJ MMIS SHARED DATA WAREHOUSE:** The Shared Data Warehouse (SDW) is the repository for New Jersey's DFD and Medicaid data. Since 2003, OptumInsight has administered the SDW and provided access to the data through a reporting tool known as Business Objects.

**OMEGA:** Online Management of Economic Goal Achievement

**SSI-EA:** Supplemental Security Income-Emergency Assistance

**WFNJ:** Work First New Jersey - Fully implemented July 1, 1997, this is New Jersey's welfare reform program which responds to the requirements of the Federal Personal Responsibility and Work Opportunity Reconciliation Act (**PRWORA**) of 1996. PRWORA established Temporary Assistance for Needy Families (**TANF**) as the replacement for AFDC cash assistance. WFNJ includes two segments, **WFNJ/TANF** for families with children, and **WFNJ/GA** (General Assistance) for single adults and couples without dependent children. WFNJ emphasizes achieving self-sufficiency and limits lifetime receipt of financial assistance to a total of five years.

## EXPLANATORY NOTES

The Department of Human Services Division of Family Development provides basic income and an opportunity to achieve self-sufficiency for individuals and families served by the Division's programs. The Division provides leadership, direction and supervision to those public agencies responsible for administering those programs and plans for and develops policies to promote self-sufficiency.

### WFNJ STATISTICAL SUMMARY (TABLE 17)

**Employment Directed Activities (EDA)** - From Activities Summary Report (OMEGA report # RM064). Unduplicated count of persons participating in Community Work Experience Program (CWEP), All Other Training, or Job Search.

**Number of Persons Employed This Month, Still Receiving TANF** - Individuals with open "empl" activity on OMEGA. Ad hoc report.

**Participants Receiving Child Care Services** - From Issuance Disbursement Summary (OMEGA report # RM703). Total number of active participants who show receipt of Child Care.

**Number of Persons Closed on FAMIS Due to Employment** - From FAMIS report #5549-RM-2

**Post TANF and Receiving Child Care** - Persons no longer in receipt of TANF but still receiving child care. From Share Data Warehouse Child Care case count based on Child Care payments (SDW report WR00022WZ\_CC ).